



Jane is a fashion designer and Hani is an architect. They have 3 children: 7 years old Jake who likes baseball and has a great creativity, 4 years old Kathleen who wants to be like her mom, and baby Jacob who is 2 years old.

Jane loves colorful design and Hani is fascinated by wood design. They both want a bathroom where they can relax and find peace.



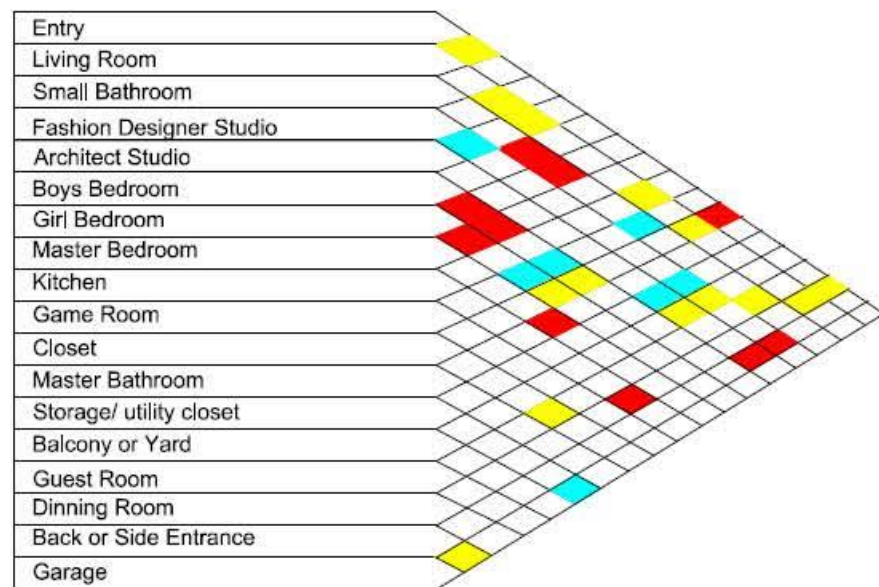
They both need a space to work at home in order to spend more family time and take care of their kids. They want to have an open place for their kids to play.

Part 1: Program List

Spaces	Entry	Living room	2 Small Baths	Fashion Designer Studio	Architect Studio	Boys Bedroom	Girl Bedroom	Master Bedroom	Master Bathroom	Kitchen	Dining Room	Game room	Storage and Closet	Guest room	Balcony /Yard	Back / side Entry	Garage
Activities	Salutes Introductions Conversation	*Seating *Meeting *Family Reunion *Movies	*Shower *Relax *Basic Needs	*Work *Design *Sew *Teach *Call Clients	*Draw *Make models *Design *Call Clients	*Sleep *Play *Watch TV *Study	*Sleep *Play *Watch TV *Study *Sew	*Sleep *Watch TV *Use Computer *Read	*Shower *Relax *Basic Needs *Massage	*Cook *Bake *Eat *Clean *Disposal	*Talk *Eat *Clean *Disposal	*Play	*Store	*Sleep *Watch TV *Read *Computer	*Relax *Get Inspired *Think *Design	*Entry	*Park
Furniture	*Carpet *Umbrella stand *Coat rack	*Sofa *Table *Painting /Models *TV *Radio *Book Shelves *Awards Display *AC/Heater	*Toilet seat *Lavatory *Tub *Mirror *Glass countertop vanity *Towel bar *AC/Heater	*Sewer Machines *Mannequins *Cloth Racks *Dress room *Mirror *Couch *Chairs *Computer *Phone *Radio *AC/Heater	*Drawing & Fabrication Tables/ desk *Computer *Book Shelves *Models *Chair *Materials Cabinet *Radio *AC/Heater	*Twin bed/ Crib *Tv *Cabinets *Stroller *Shoes rack *Mirror *Laptop *Table and Chair AC/Heater Night table	*Twin Bed *Tv *Cabinets *Shoes rack *Mirror Sewing M. *Table and Chair AC/Heater *Night table	*King Bed *Tv *Cabinets *Shoes rack *Mirror *Table and Chair AC/Heater *Night table *Bookcase	*Toilet seat *Lavatory *Pool Tub *Mirror *Glass countertop vanity *Towel bar *Cabinet set	*Stove *Fridge *Cabinets *Counter *Breakfast Table/stools *Hood *Microwave *Sink *Top cabinets *Oven *Garbage C.	*Dining Table and chairs *Glass Display Cabinet *Fan/AC Heater	*Mat on Floor *Toys Cabinet *Princes house *Toy Car *Baseball bats *Small trampoline bed *AC/Heat	*Cleaning Supplies *House tools and supplies *small wall mounted shelves	*Bed *Tv *Cabinets *Shoes rack *Mirror *Table and Chair AC/Heater *Night table	*Table and seats	*Bench	*Car *Tools Box *Wall mounted
Natural Light	Yes	Yes	-Advised -Not Required	Yes	Yes	Yes	Yes	Yes	-Advised -Not Required	Not Required	Yes	No	No	Yes	Yes	Yes	Yes
Lighting	Yes	Yes	Yes	Yes	Yes	Yes	Yes	Yes	Yes	Yes	Yes	Yes	Yes	Yes	Yes	Yes	Yes
Plumbing	No	Yes	Yes	No	No	No	No	No	Yes	Yes	No	No	No	No	No	No	No
Who will Use Space	Family Special Guests Clients Visitors	Family Guests Clients	Guests Clients/ Children	Fashion Designer	Architect	*7 y/o boy *2 y/o boy	*4 y/o girl	Parents	Parents	Family Guests	Family Guests Clients Visitors	Children Parents	Parents	Guests/ Visitors	Parents/ Children Guests	Parents	Parents
Public/Private	Public	Public	Public/ Private	Private	Private	Private	Private	Private	Private	Public	Public	Public	Private/ Public	Private	Private/ Public	Private	Private

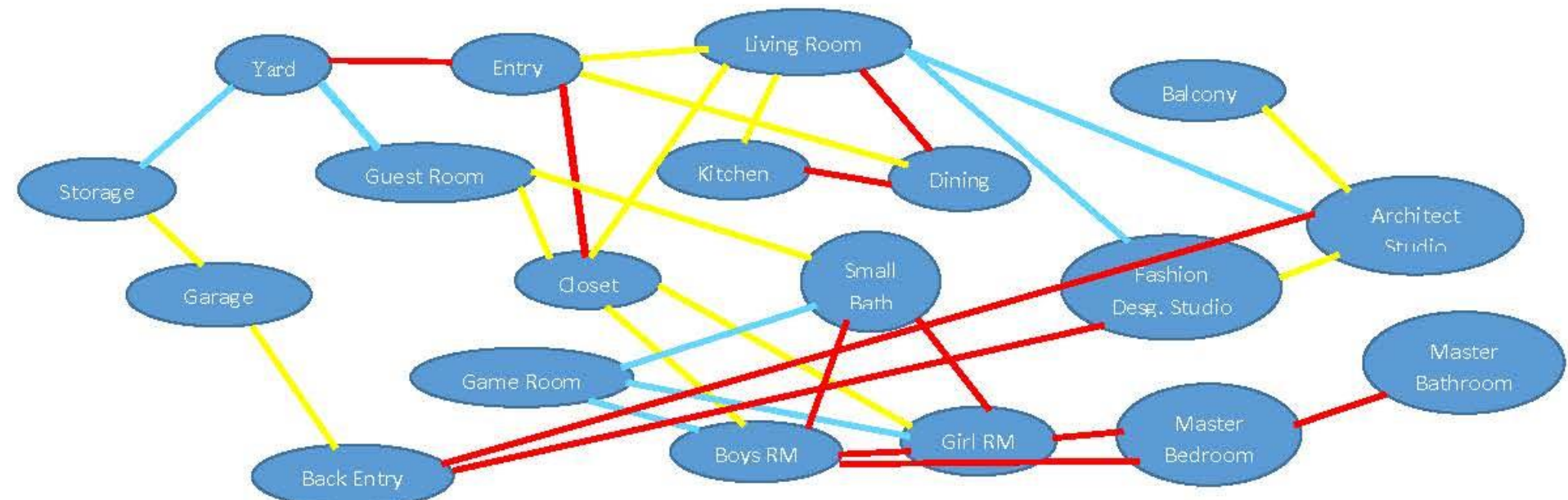
Part 2: Adjacent Matrix

Must ■ Should ■ "Would be nice" ■



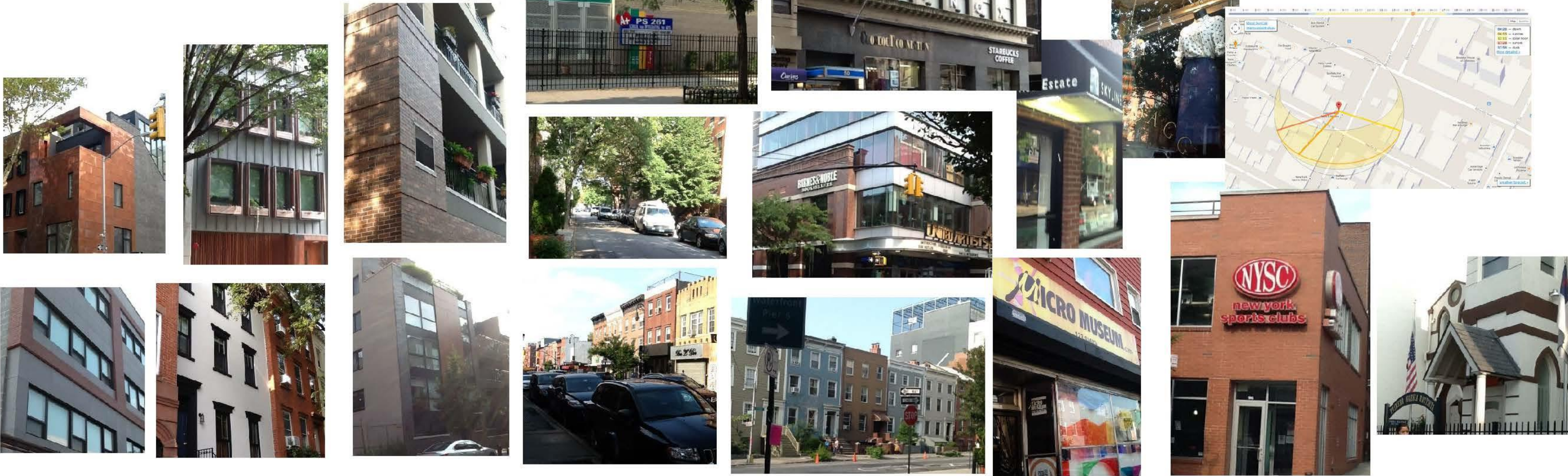
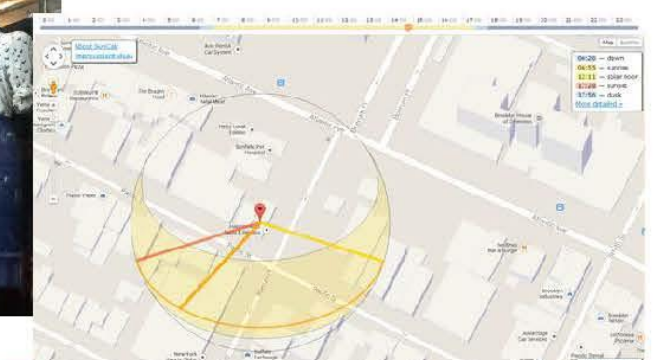
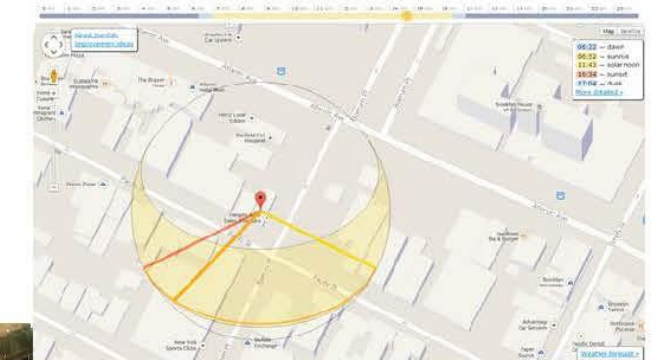
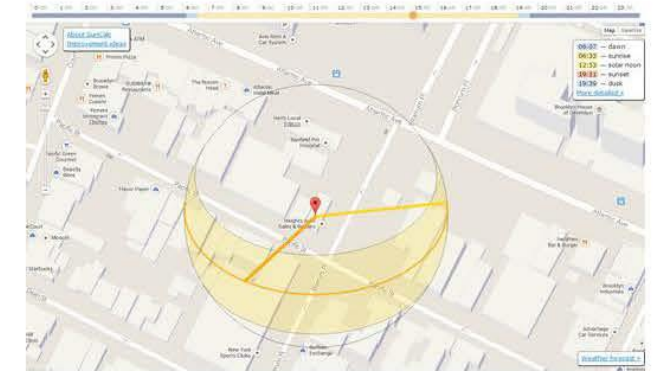
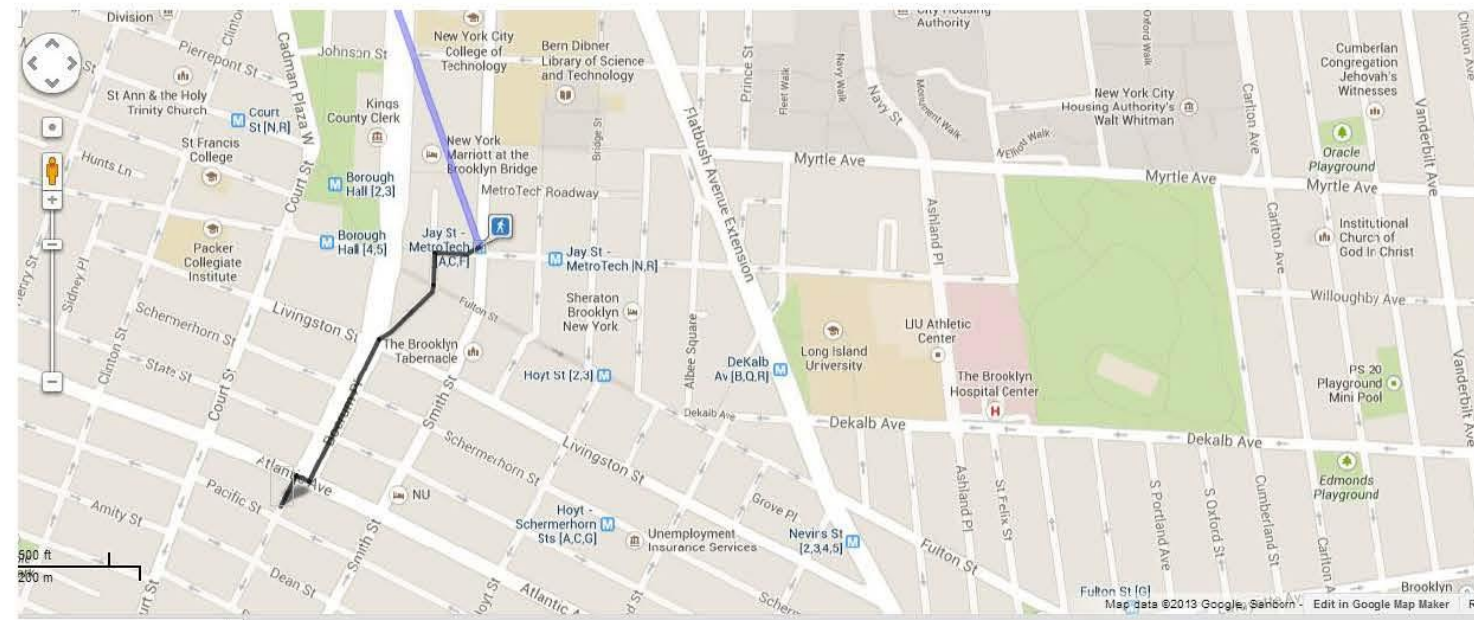
Part 3: Bubble Diagram

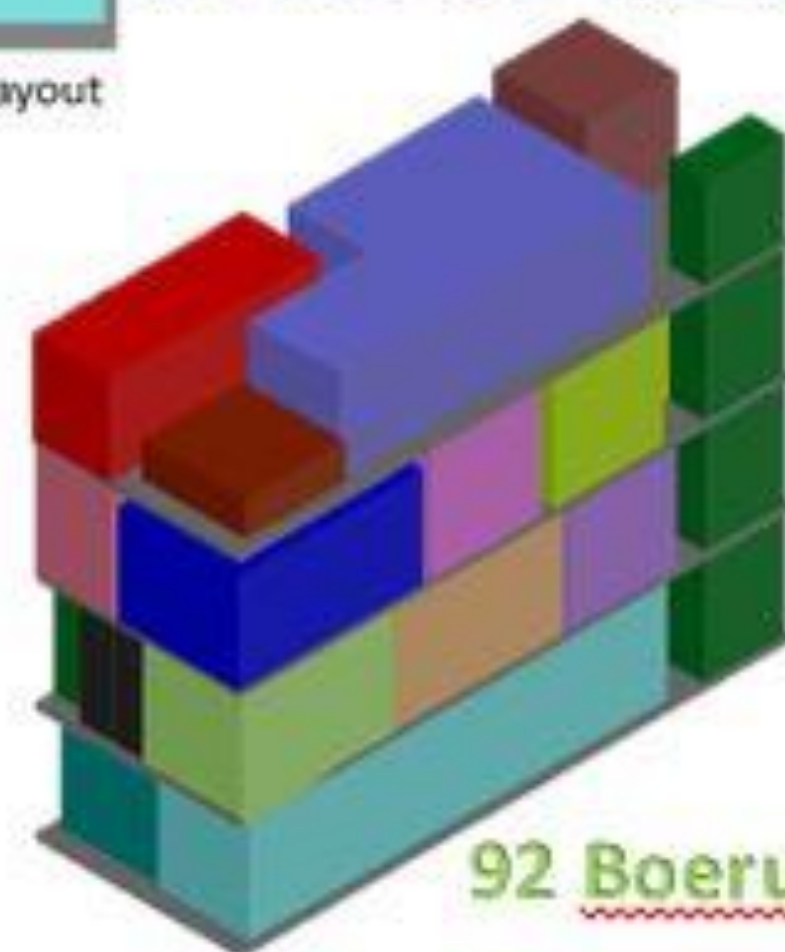
Must — Should — "Would be nice" —



Property Characteristics:

- Address: 92 Boerum Place, Brooklyn 11201
- Lot Area: 1875 sf
- Lot Frontage: 25' Lot Depth: 75
- Year Built: 1960(estimated)
- Number of Buildings: 2
- Number of Floors: 1
- Gross Floor Area: 1,425 sf (estimated)
- Residential Units: 0 Total # of Units: 1
- Primary zoning: R6
- Floor Area Ratio: 0.76 Max. FAR: 2.43
- Land Use: Transportation and Utility
- Landmark Building: No
- Historic District: No





Sheily Feliz
 Design 5 Arch 3510
 92 Boerum Place Brooklyn, NY
 Diagrammatic Site Layout

Precedent Research Arch 3510 Sheily Feliz

Container Living in Atlanta, Georgia

Atlanta Georgia USA - Francis Kirkpatrick (architect) and George Runkle (engineer)

Land Area: 2,160 sq. ft. (200 m²) each lot

Built Area: 1,900 sq. ft. (176 m²) + basement garage of 650 sq. ft. (60 m²) each home

Year Built: 2007 (brown) and 2011 (white)



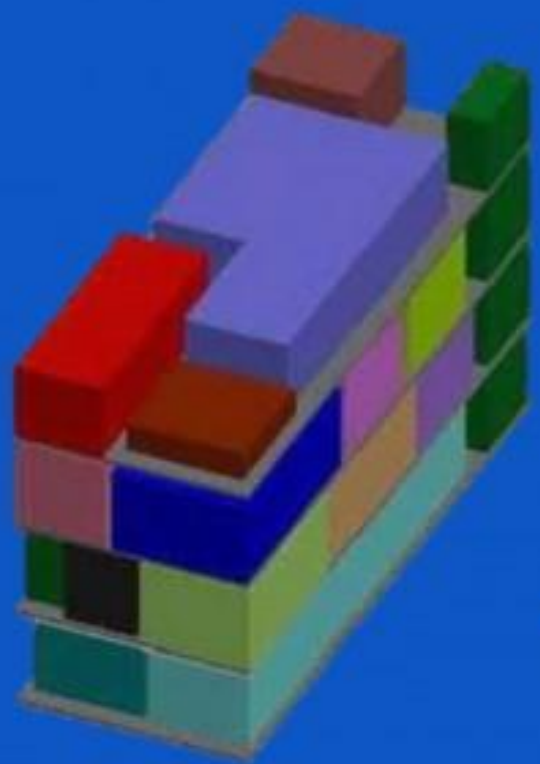
Some years back, Glen Donaldson, proprietor of building firm g a d. Design and Construct, read a magazine article about shipping containers being converted to homes. He couldn't find many examples in the U.S., but he heard about a quirky installation of buildings in London known as Container City. He subsequently visited a couple of shipping container homes to see how they were constructed.

In 2006, Glen sold his existing home and bought six containers. Collaborating with architect, Francis Kirkpatrick and engineer, George Runkle, he turned six 40 foot containers into a three bedroom, three bathroom 1,900 sq. ft. home with a four car garage under for around \$250,000. The home is the brown one to the left.

<http://www.youtube.com/watch?v=HRxA25AR4GA>

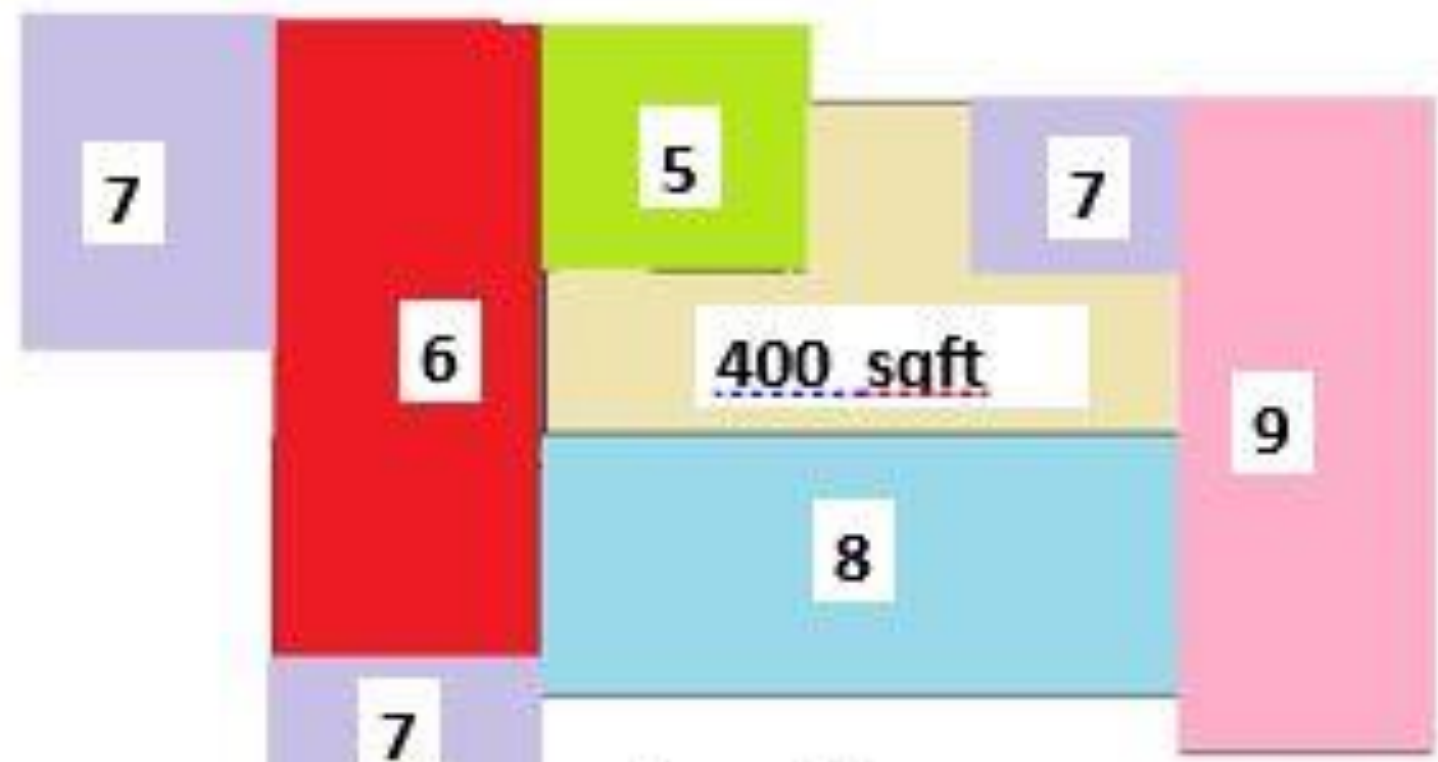
<http://theownerbuildernetwork.co/house-hunting/container-homes/the-atlanta-shipping-container-homes/>



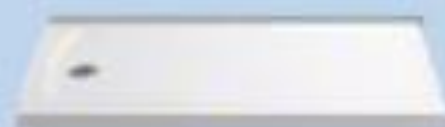
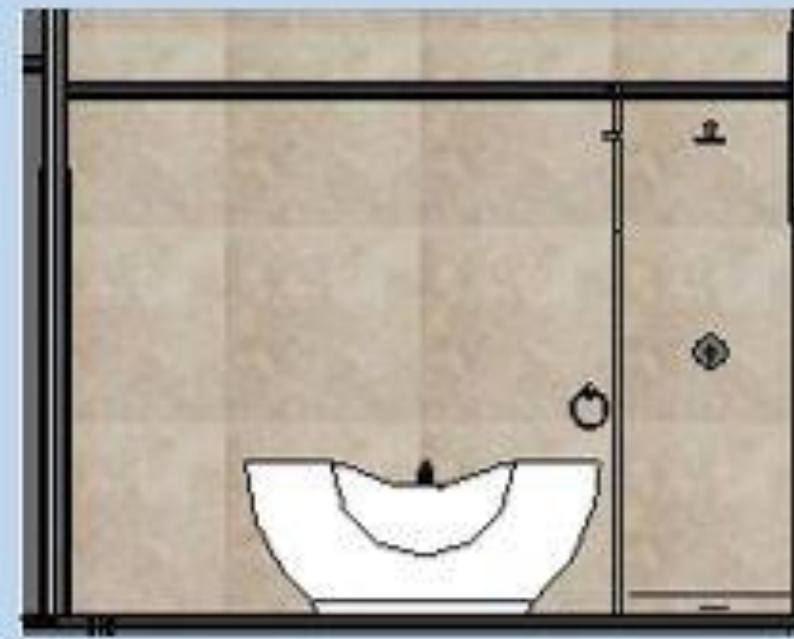
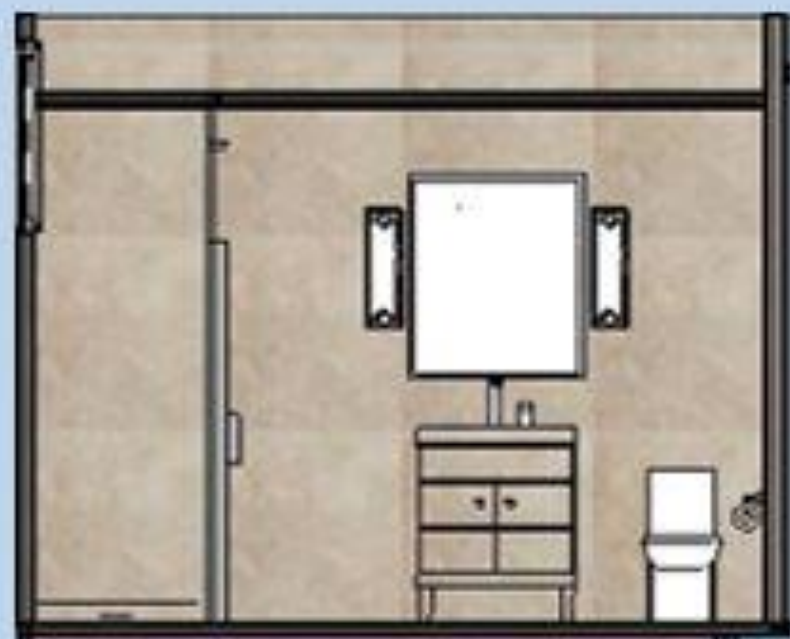




First Floor



Second Floor



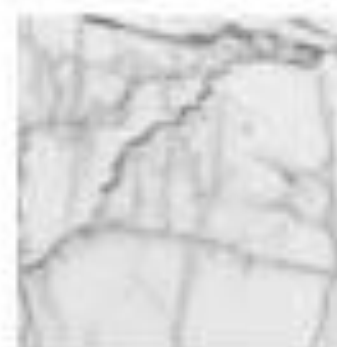
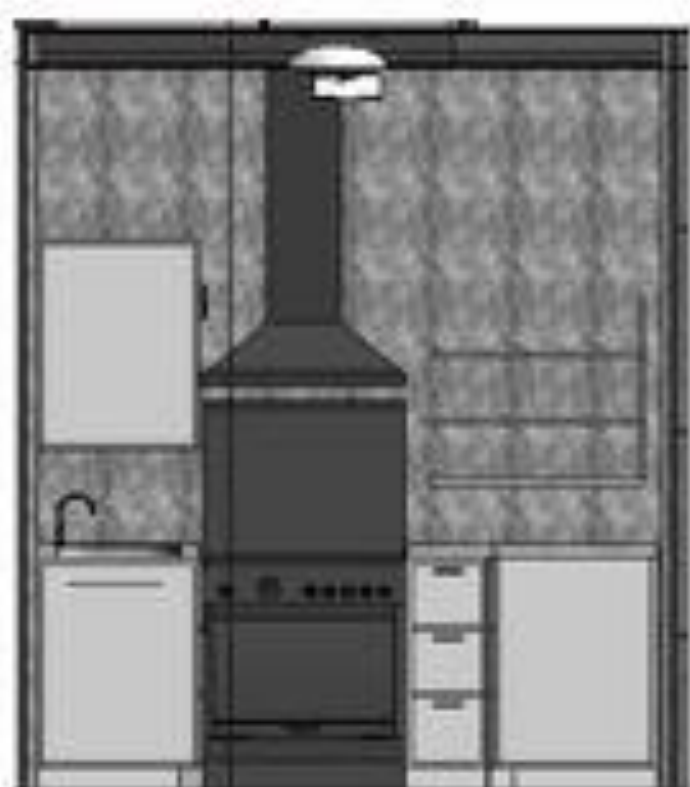
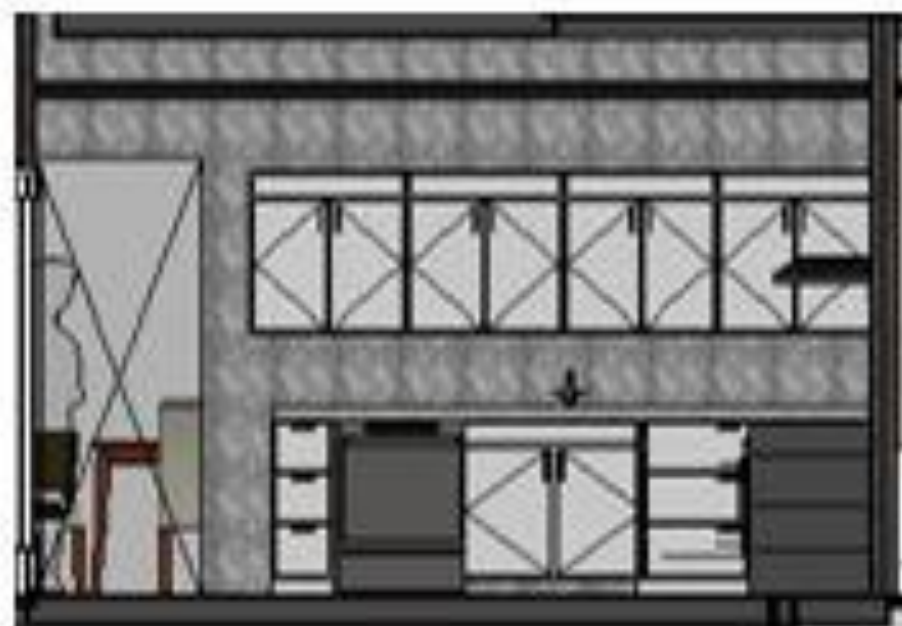
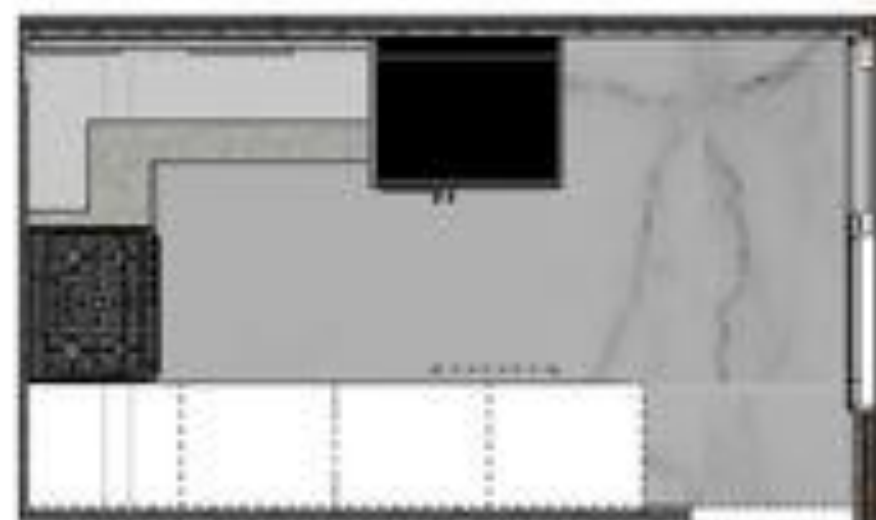
Bathroom Layout

Post 7

Sheily Feliz

Arch 3410

Container House





Pacific St.



First Floor Plan

Post 9

Sheily Feliz

Arch 3410

Container House



Second Floor Plan

Post 10

Sheily Feliz

Arch 3410

Container House



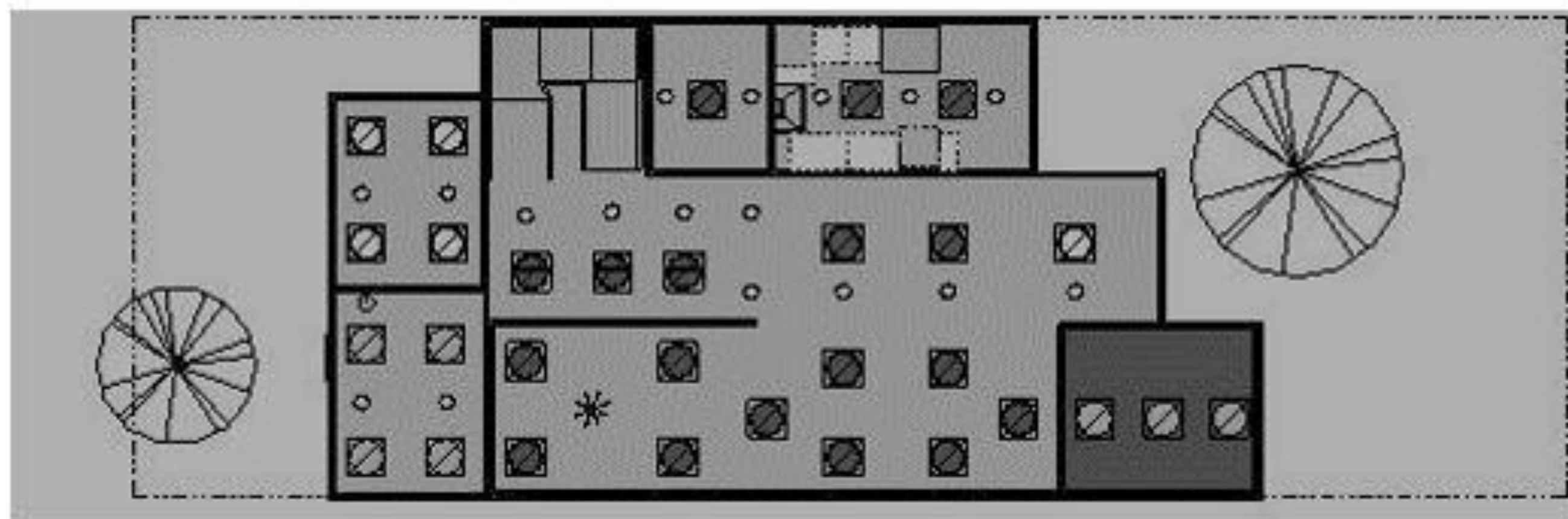
Basement Floor Plan

Post 11

Sheily Feliz

Arch 3410

Container House



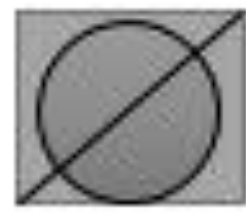
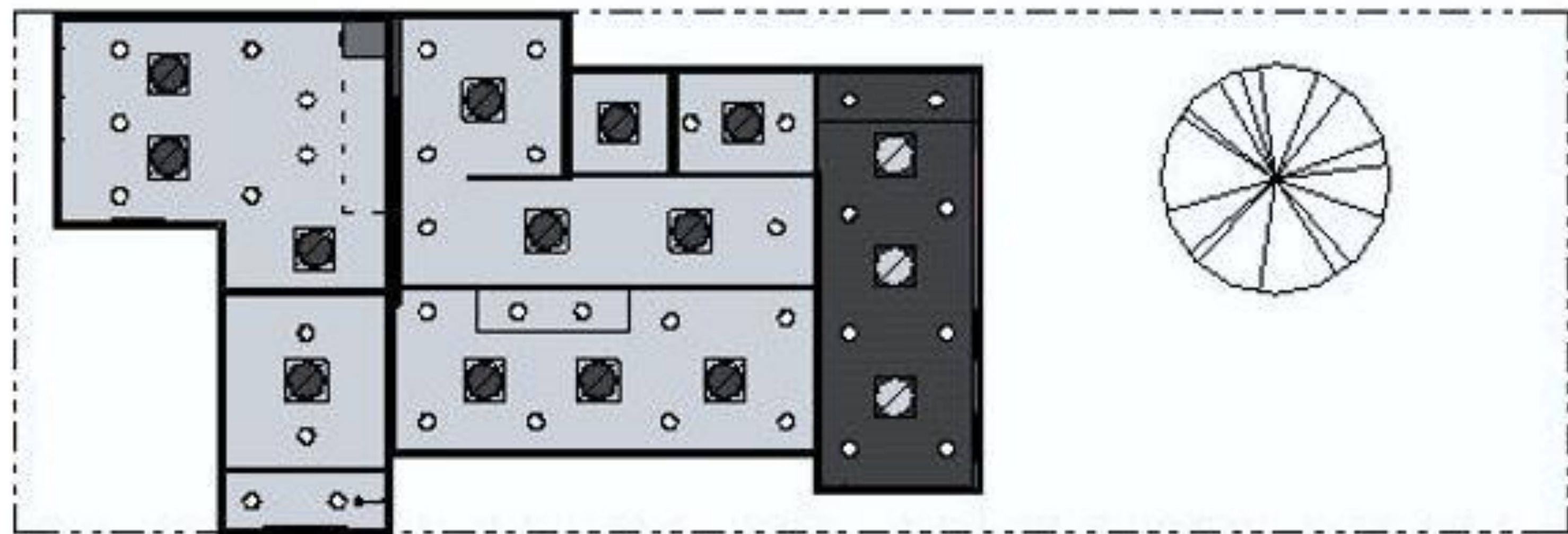
1ST Floor Ceiling Plan

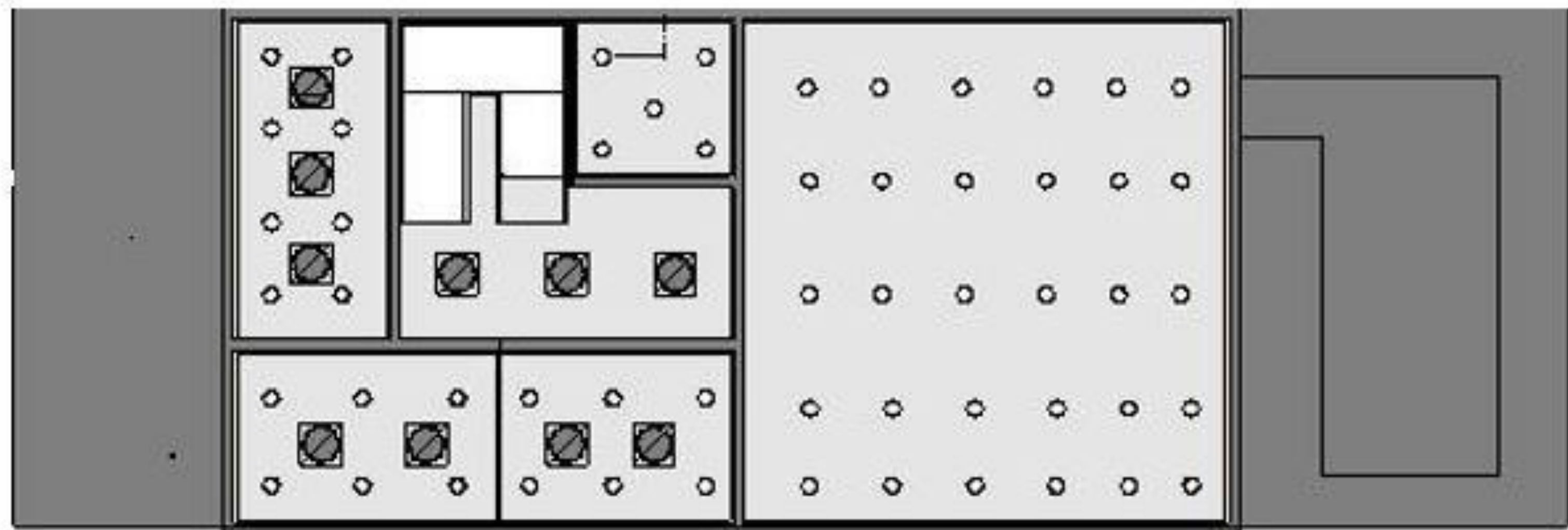
Post 12

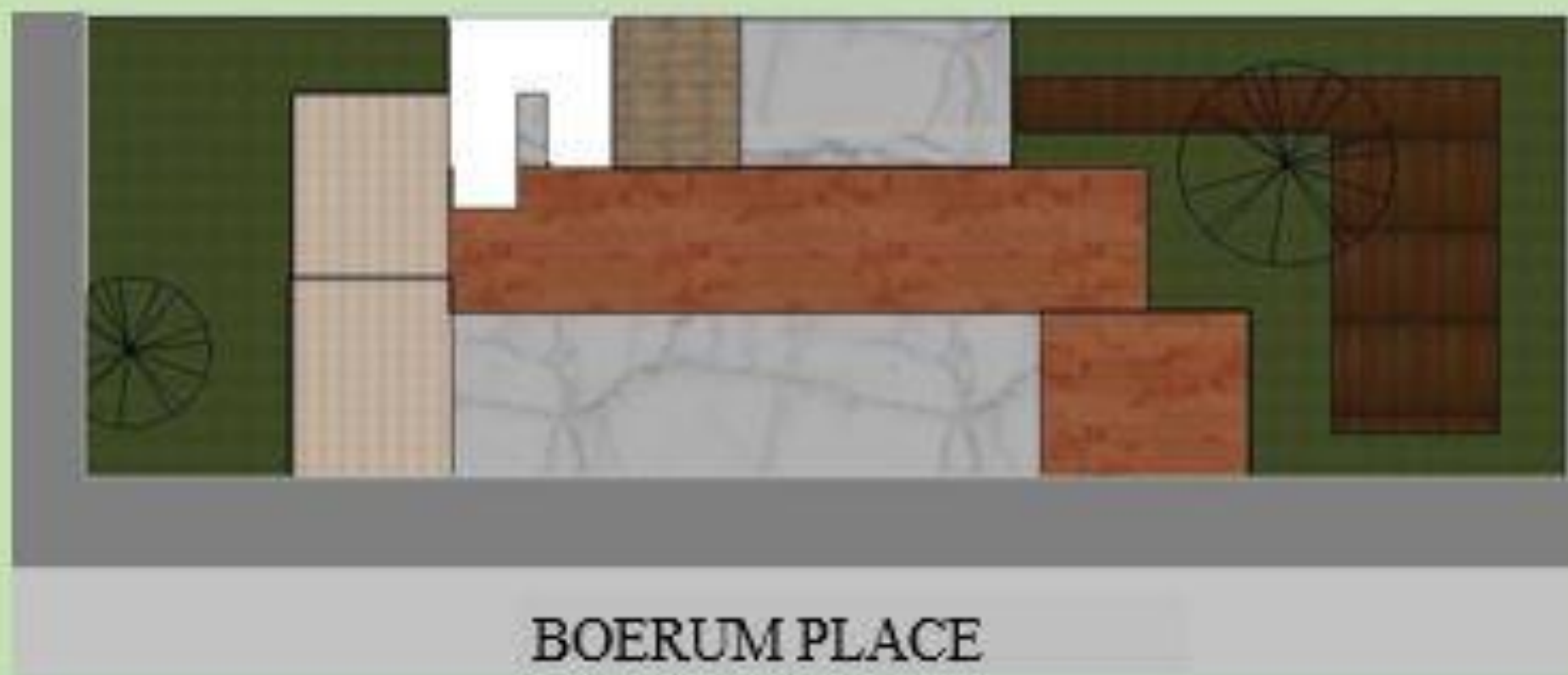
Sheily Feliz

Arch 3410

Container House









Wood siding



Metal panel



French Door



Outdoor Light



French Window



Sliding French Patio Door

Elevations

Post 16

Sheily Feliz

Arch 3410

Container House



French Window



French Door



Metal Panel



Wood Siding



Outdoor Light



Entrance Door



Outdoor Furniture

Elevations

Post 17

Sheily Feliz

Arch 3410

Container House



Section I



Section II



Section III

Section III

Post 19

Sheily Feliz

Arch 3410

Container House



Section IV



Model Images

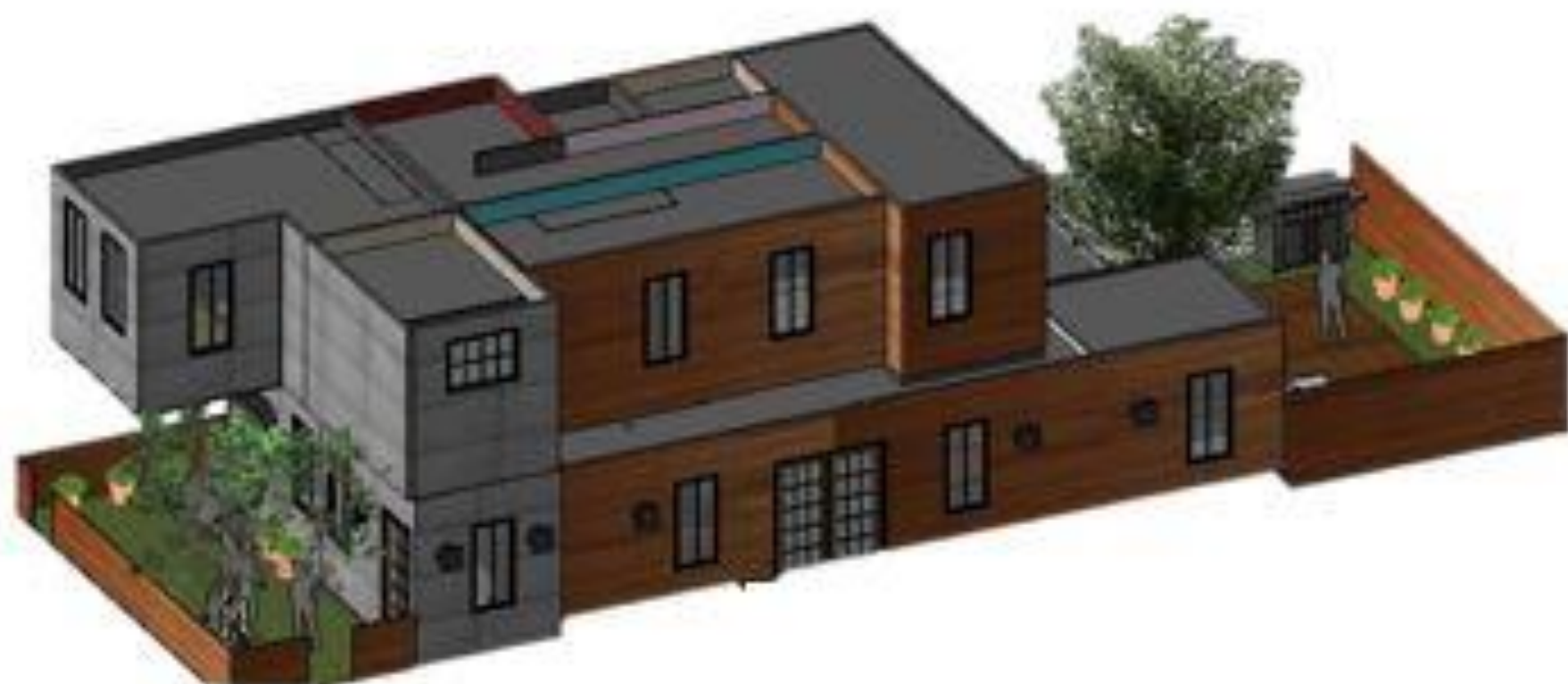
Post 21

Sheily Feliz

Arch 3410

Container House





Model Images

Post 23

Sheily Feliz

Arch 3410

Container House