

# ARCH 2431. Btech III

## Using Filters to Color Code Wall Types by Fire Rating – for Plan and RCP



Professor Paul C. King, RA, AIA, ARA

[Prof.Paul.King@Gmail.com](mailto:Prof.Paul.King@Gmail.com)

<http://professorpaulking.wordpress.com/>

<http://students.autodesk.com/>

# Add Display Filter to Show Rated walls in color

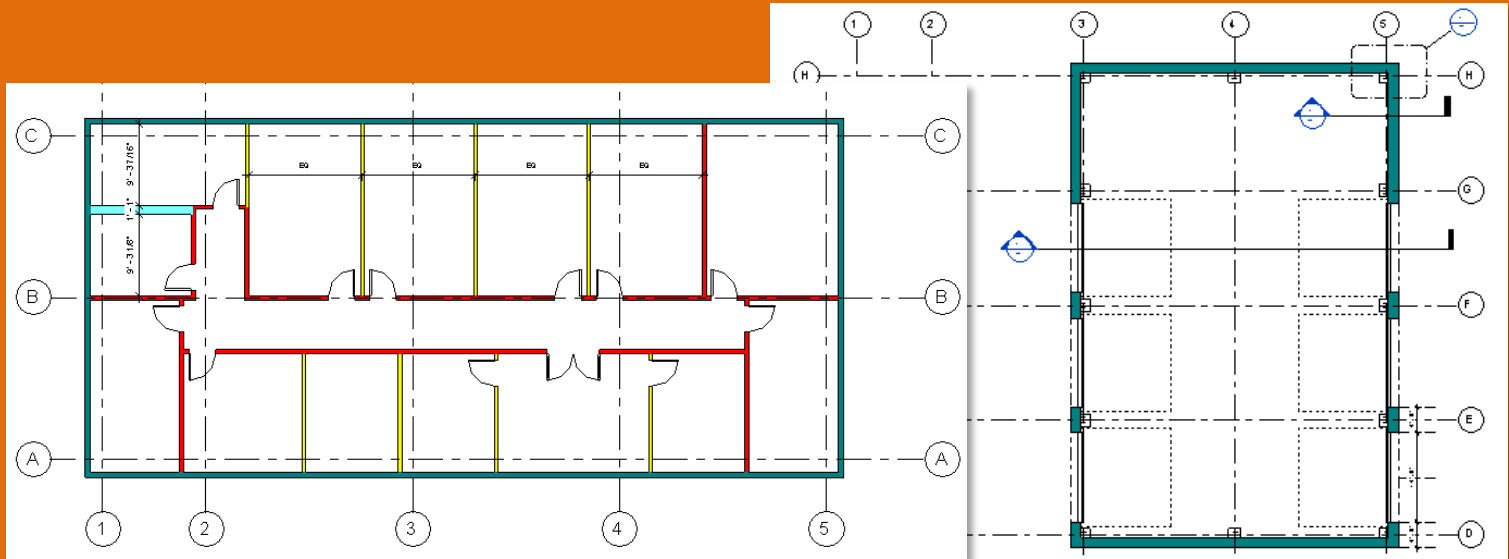
## Add Display Filters

- 2-HR
- 1-HR
- Non-Rated
- Exterior
- Discrepancy
- Corrected

## View Template

- Create & Apply

## Wrap Up



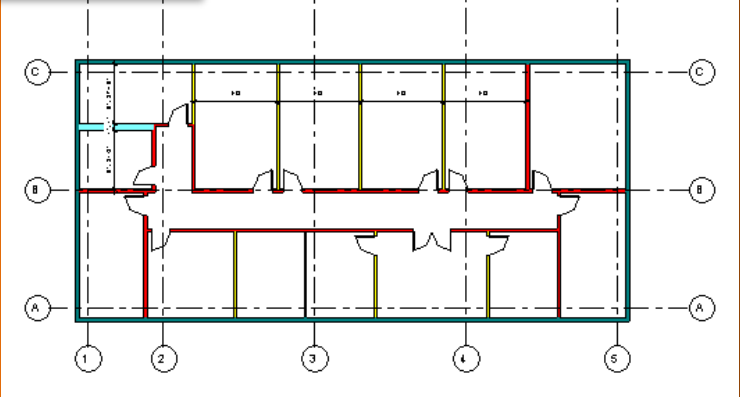
## • Color Code Walls by Fire Rating

Visibility/Graphic Overrides for Floor Plan: MAIN

Name	Visibility
Interior (2-HR)	<input checked="" type="checkbox"/>
Interior (1-HR)	<input checked="" type="checkbox"/>
Interior Not (1 OR 2-HR) Rated	<input checked="" type="checkbox"/>
Exterior	<input checked="" type="checkbox"/>

Cut		Half-tone
Lines	Patterns	
		<input type="checkbox"/>
		<input type="checkbox"/>
		<input type="checkbox"/>
		<input type="checkbox"/>



### Add Display Filters

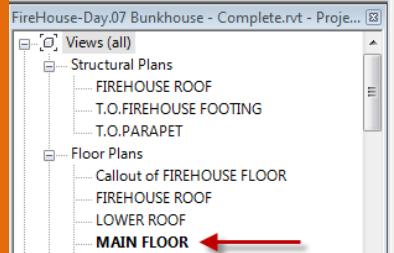
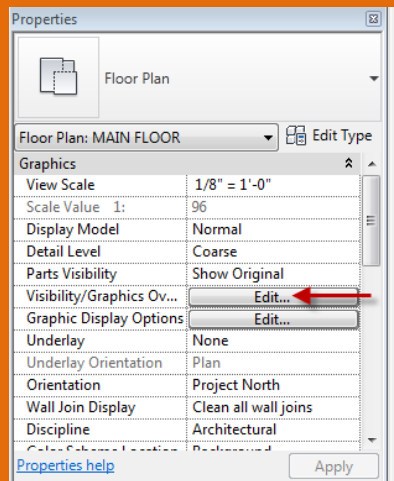
- 2-HR
- 1-HR
- Non-Rated
- Exterior
- Discrepancy
- Corrected

### View Template

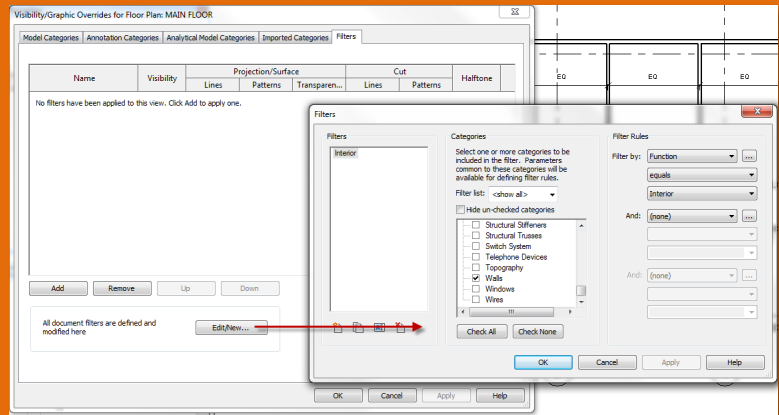
- Create & Apply

### Wrap Up

# Add Display Filter : Create New Filter (2-HR)

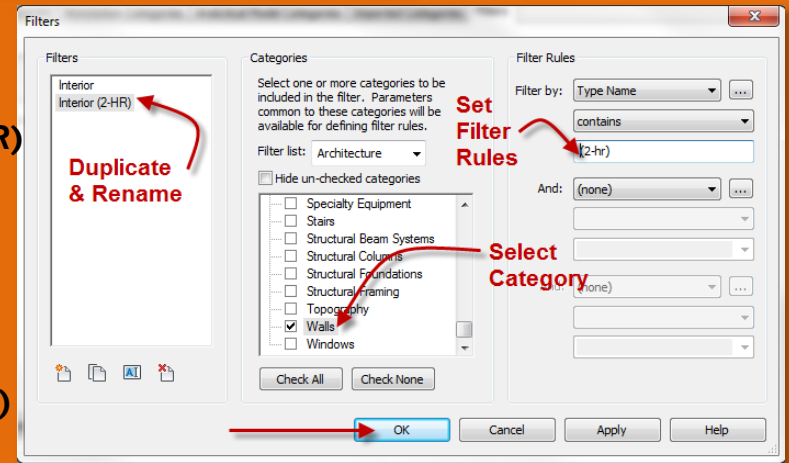


- Select View : Main Floor
- Visibility/Graphics Overrides > Edit



- Filter Edit/New

- Highlight
- Interior > Duplicate
- Rename Interior (2-HR)



- Filters
- Category > Walls
- Filter Rules
- Type Name > Contains > (2-HR)
- OK

### Add Display Filters

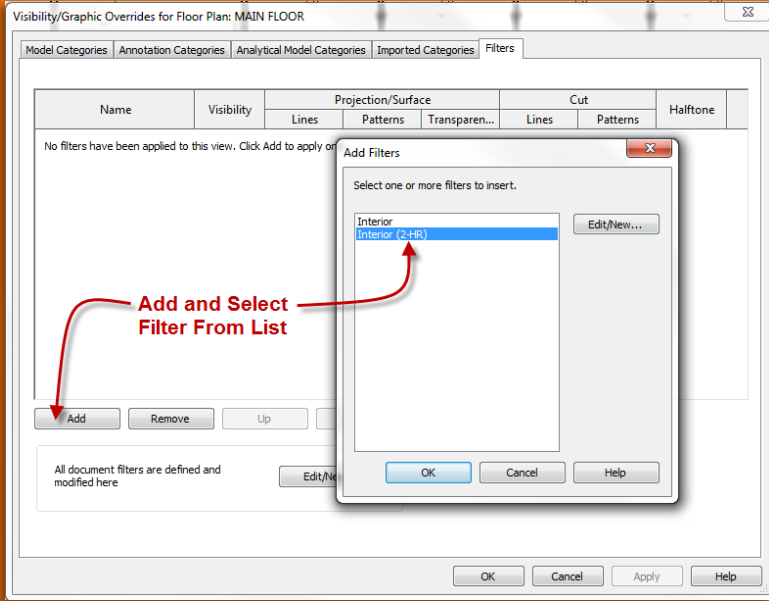
- 2-HR
- 1-HR
- Non-Rated
- Exterior
- Discrepancy
- Corrected

### View Template

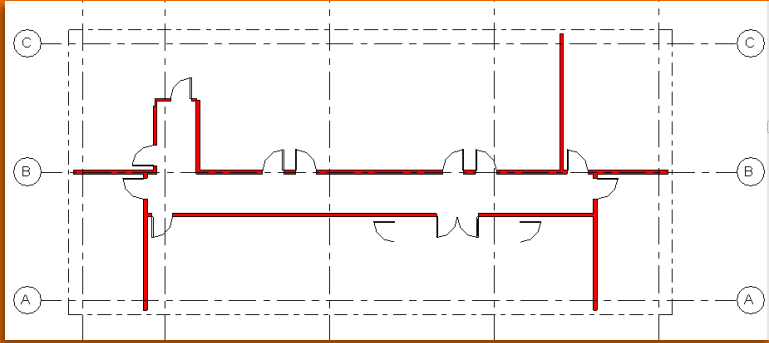
- Create & Apply

### Wrap Up

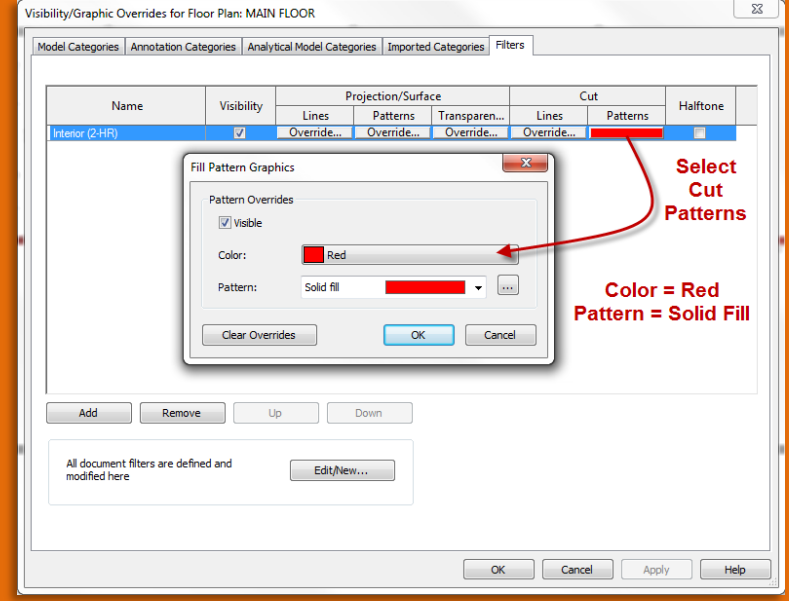
# Add Display Filter : Apply it to View



• Add > Select Filter from the list



- Add the color properties
- Cut > Patterns
  - Color = Red
  - Pattern = Solid Fill



# Add Display Filter : Duplicate & Apply to View (1-HR)

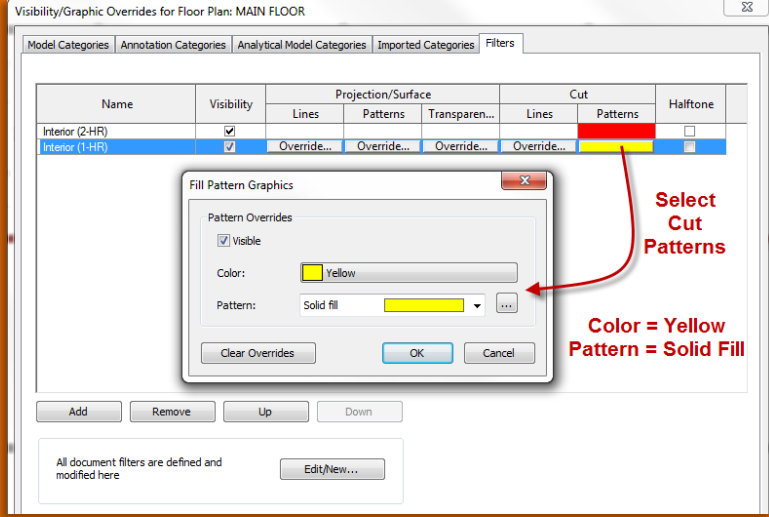
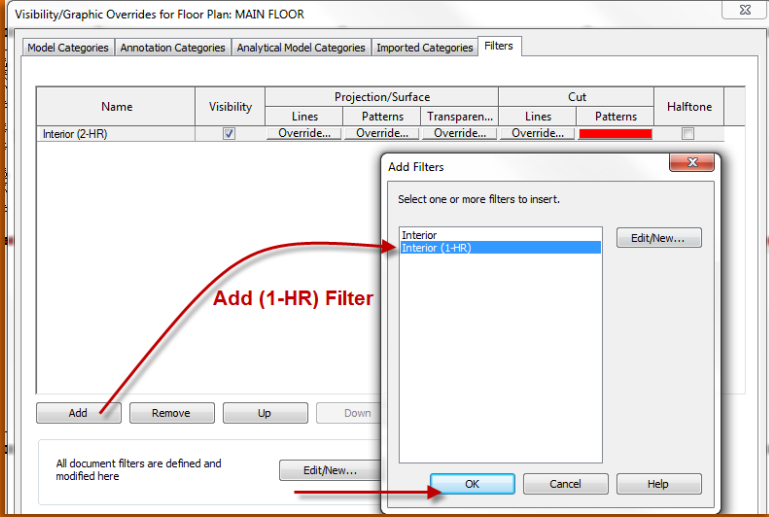
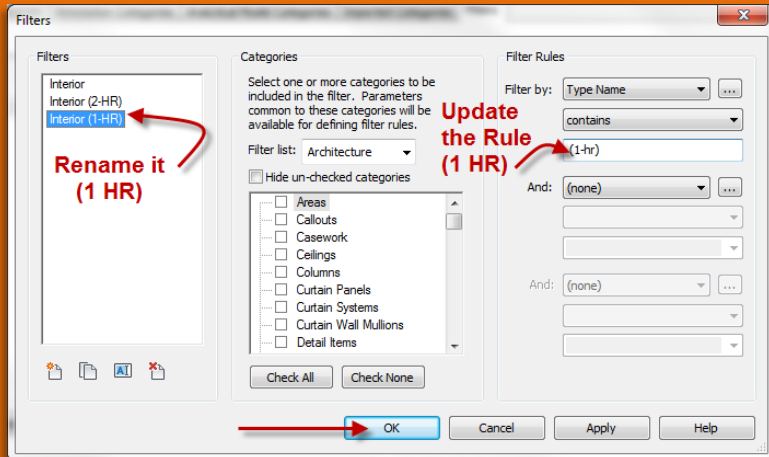
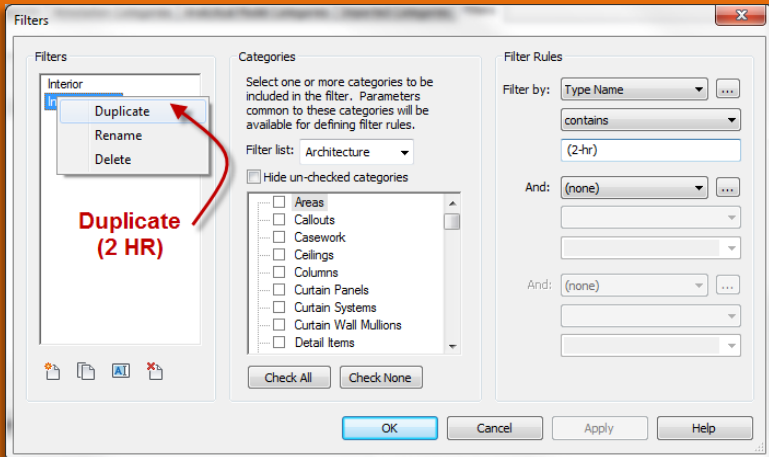
## Add Display Filters

- 2-HR
- 1-HR
- Non-Rated
- Exterior
- Discrepancy
- Corrected

## View Template

- Create & Apply

## Wrap Up



# Add Display Filter : Interior Non Rated Partition

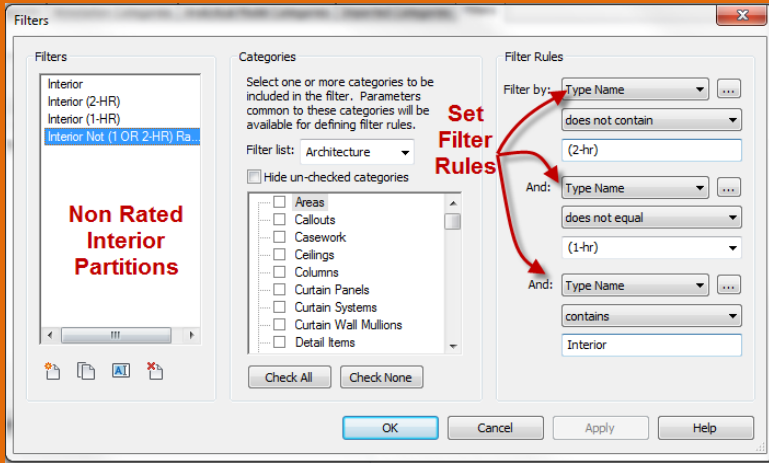
## Add Display Filters

- 2-HR
- 1-HR
- **Non-Rated**
- Exterior
- Discrepancy
- Corrected

## View Template

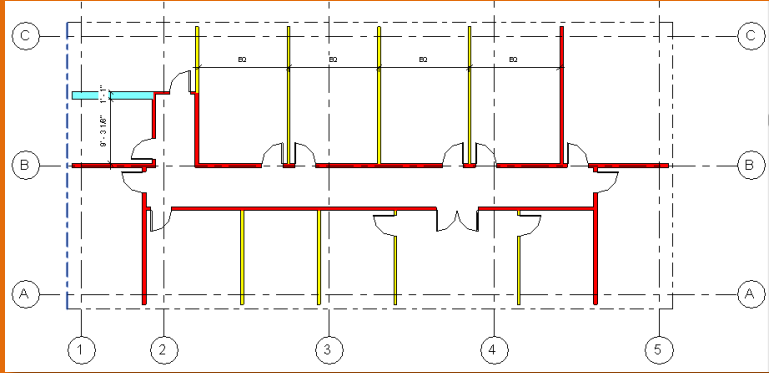
- Create & Apply

## Wrap Up

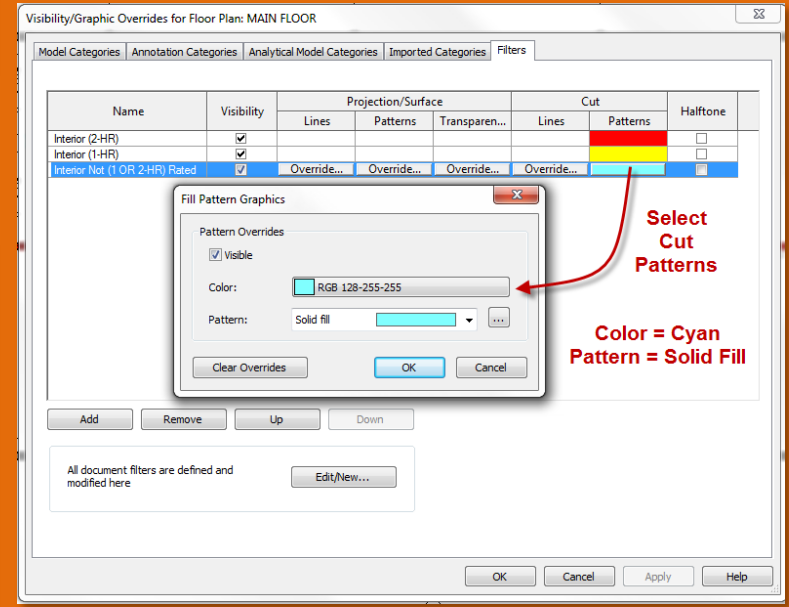


### • Cut > Patterns

- Color = Cyan
- Pattern = Solid Fill



- Type Name > Does not Contain > (2-HR)
- and
- Type Name > does not equal > (1-HR)
- and
- Type Name > contains > Interior



Color = Cyan  
Pattern = Solid Fill

# Add Display Filter : Exterior Walls

## Add Display Filters

- 2-HR
- 1-HR
- Non-Rated
- Exterior
- Discrepancy
- Corrected

## View Template

- Create & Apply

## Wrap Up

Visibility/Graphic Overrides for Floor Plan: MAIN FLOOR

Name	Visibility	Projection/Surface			Cut		Halftone
		Lines	Patterns	Transparen...	Lines	Patterns	
Interior (2-HR)	<input checked="" type="checkbox"/>						<input type="checkbox"/>
Interior (1-HR)	<input checked="" type="checkbox"/>						<input type="checkbox"/>
Interior Not (1 OR 2-HR) Rated	<input checked="" type="checkbox"/>						<input type="checkbox"/>
Exterior	<input checked="" type="checkbox"/>						<input type="checkbox"/>

Filters

Filter Rules

Filter by: Type Name

contains

Exterior

And: (none)

And: (none)

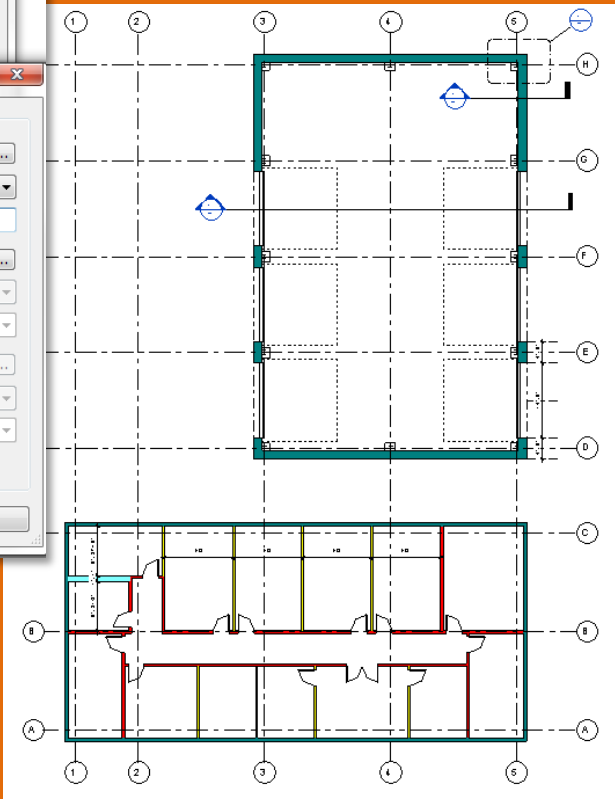
Categories

Filter list: Architecture

- Specialty Equipment
- Stairs
- Structural Beam Systems
- Structural Columns
- Structural Foundations
- Structural Framing
- Topography
- Walls
- Windows

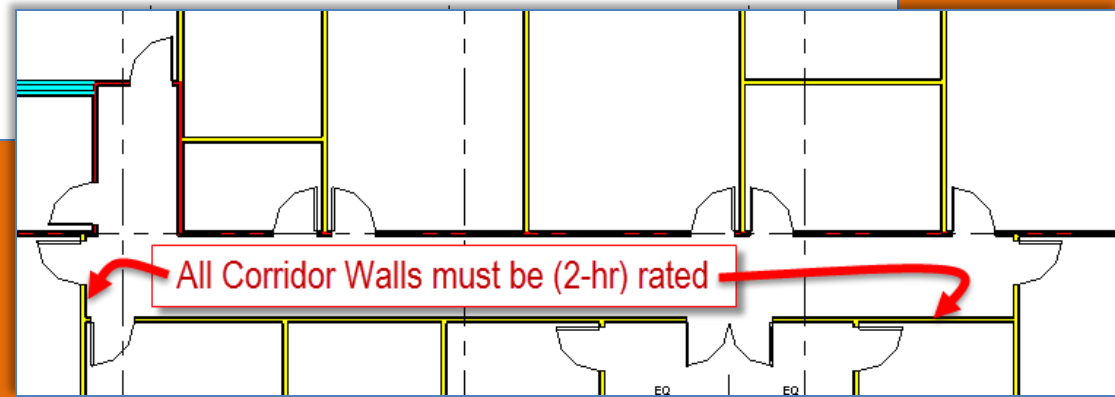
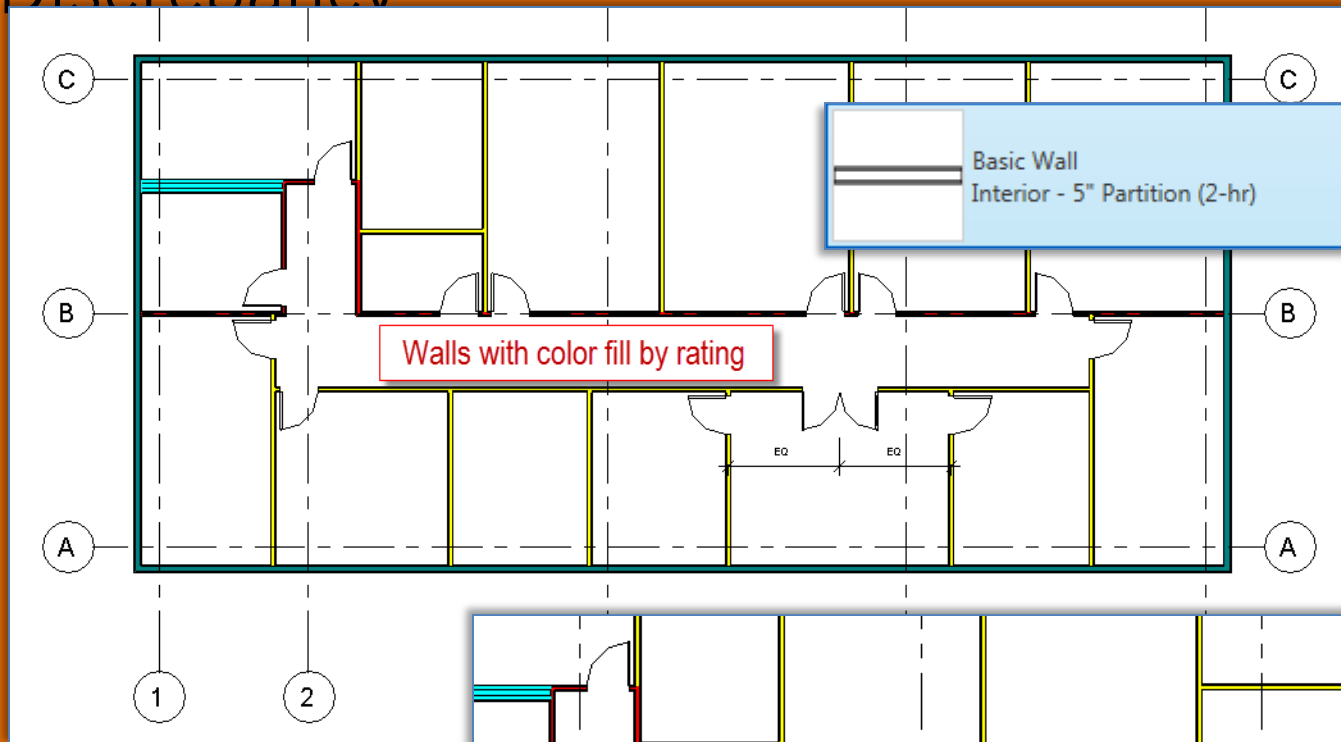
Check All Check None

OK Cancel Apply Help



- Exterior Fill
  - Cut > Patterns
    - Color = Teal
    - Pattern = Solid Fill

# All corridors must be (2-HR) Rated : Discrepancy



- Use color fill to determine if walls are properly rated
- Split & replace corridor walls with (2-HR) Rated partition type
- Interior 5" Partition (2-

## Add Display Filters

- 2-HR
- 1-HR
- Non-Rated
- Exterior
- Discrepancy
- Corrected

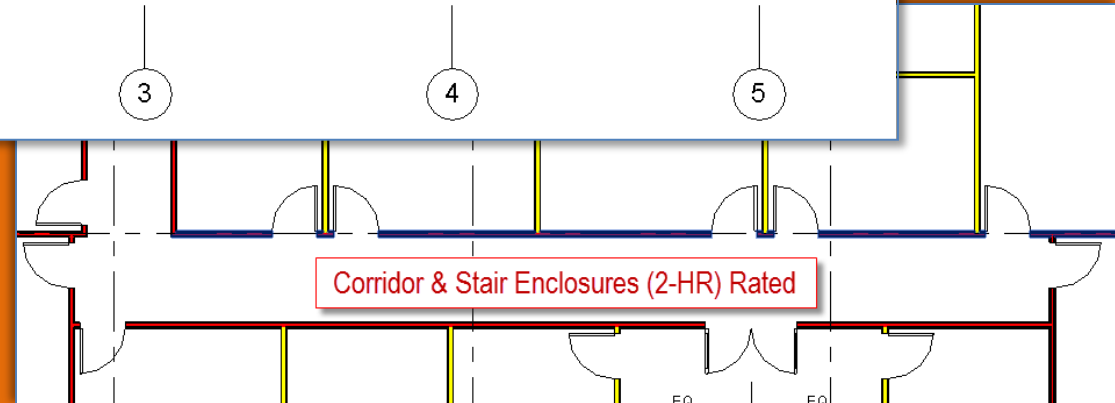
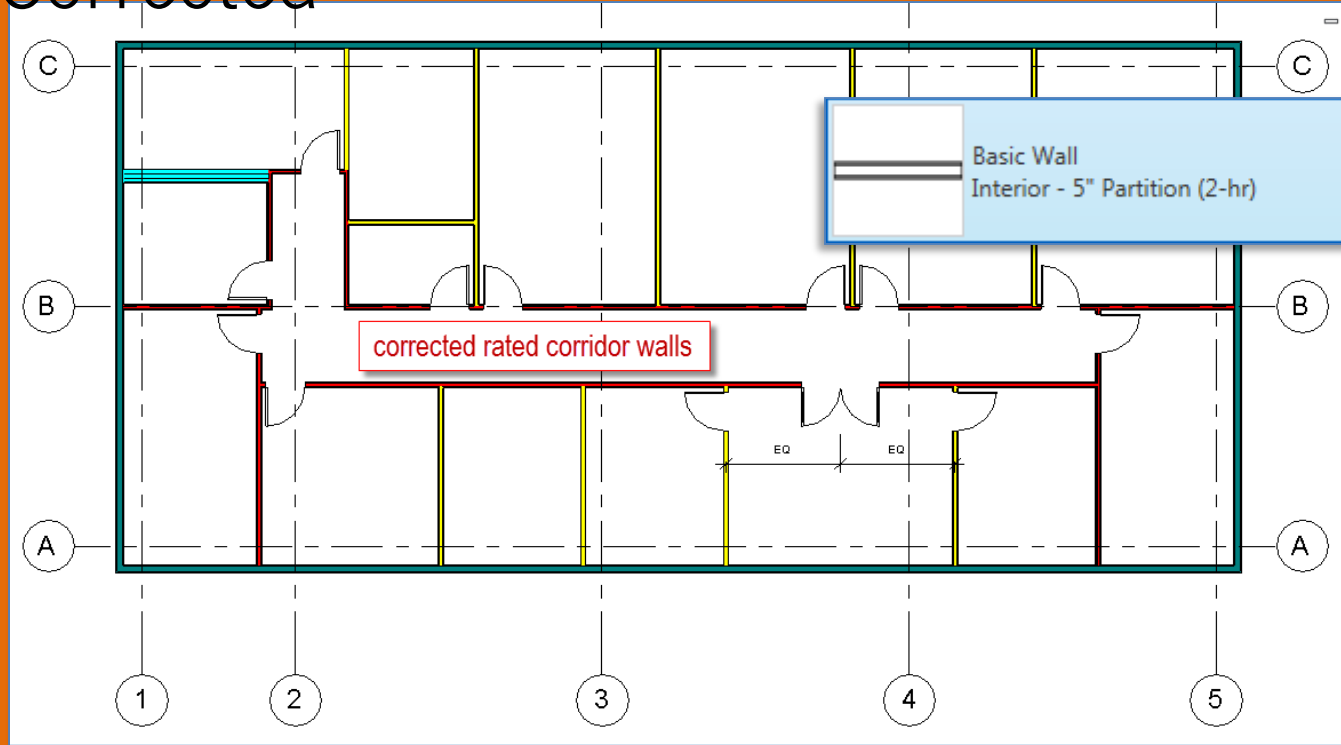
## View Template

- Create & Apply

## Wrap Up



# All corridors must be (2-HR) Rated : Corrected



- Use color fill to determine if walls are properly rated
- Split & replace corridor walls with (2-HR) Rated partition type
- Interior 5" Partition (2-

# Create & Use a View Template

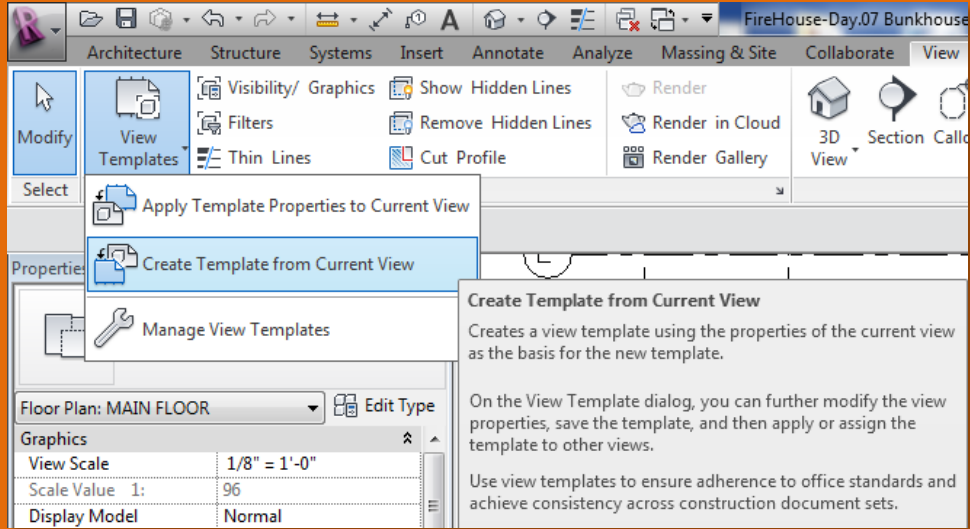
## Add Display Filters

- 2-HR
- 1-HR
- Non-Rated
- Exterior
- Discrepancy
- Corrected

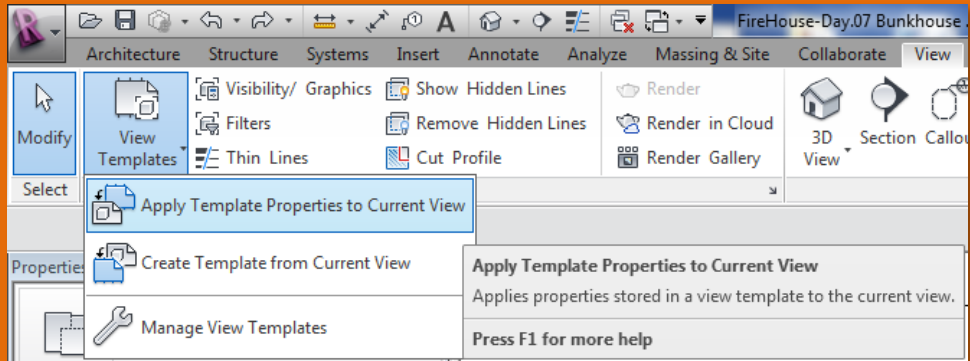
## View Template

- Create & Apply

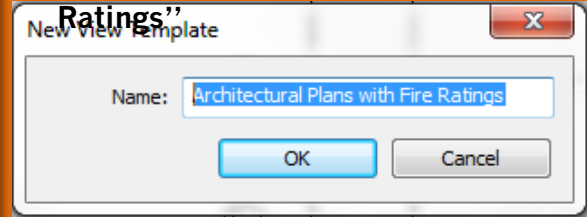
## Wrap Up



- Select another view
- Apply Template to Current View



- Create Template
- Name it "Architectural Plans with Fire Ratings"



- Select View name from the list

