



Building Technology III

New York City College of Technology

Day 05

Partition Types

Professor Paul C. King, RA, AIA, ARA
Pking@CityTech.Cuny.Edu
Prof.Paul.King@Gmail.com

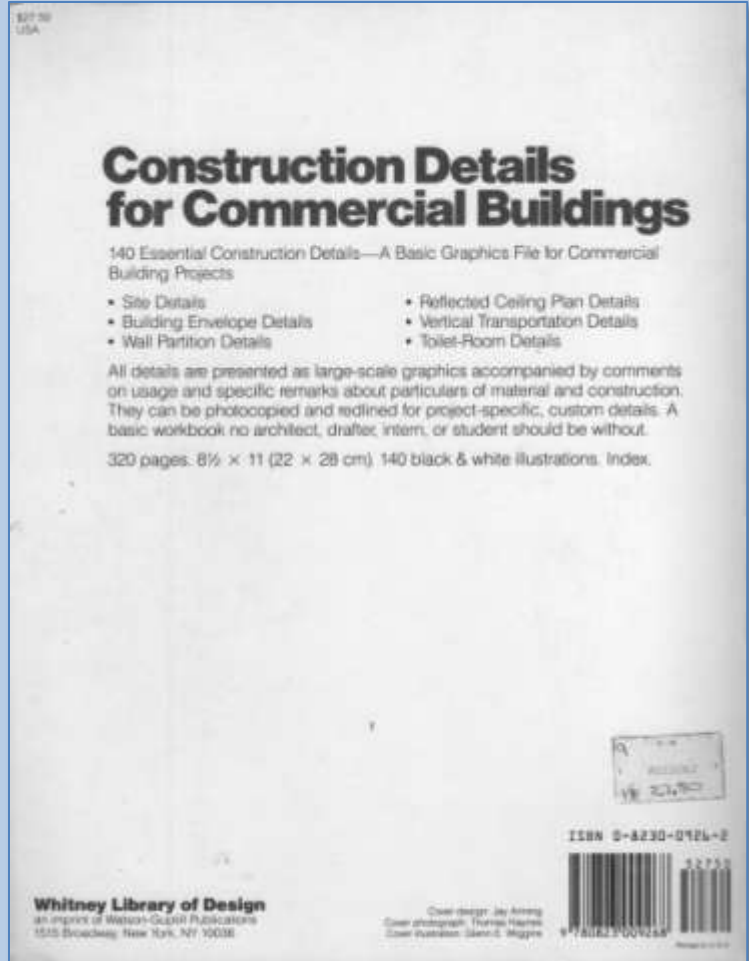
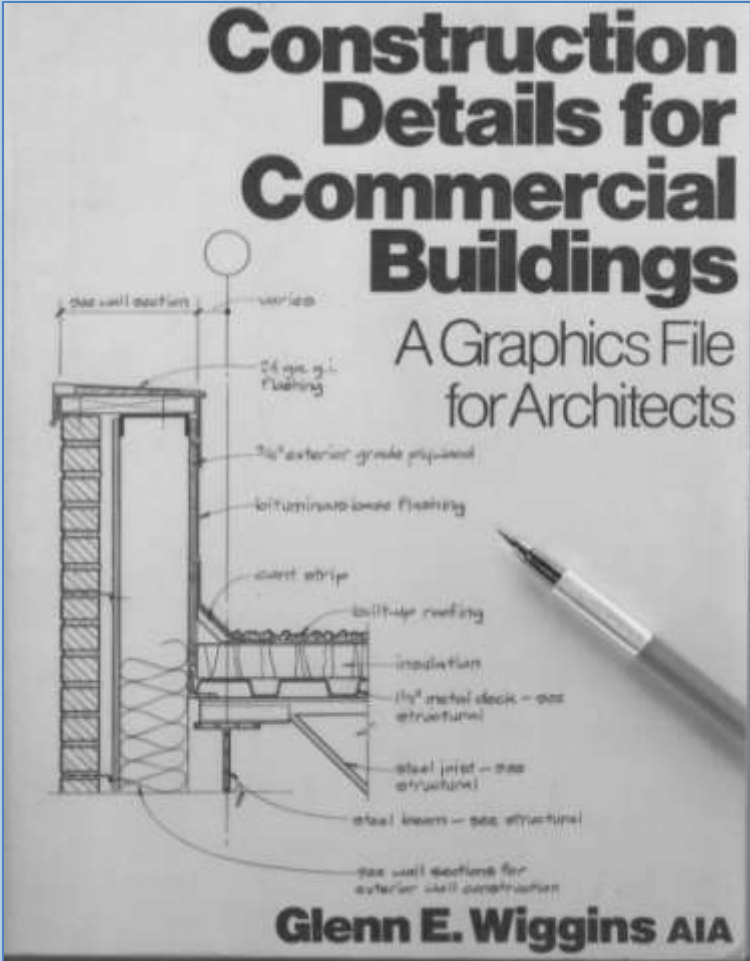
<http://professorpaulking.wordpress.com/>

<http://students.autodesk.com/>

Construction Details for Commercial Buildings

Partition Types

- Sample Sheet
- Construction Details : **GWB**
 - 7 1/4"
 - 4 7/8"
 - 4 1/4"
 - 6 1/8" (2 hr)
 - Shaft (1 hr)
 - Chase (1 hr)
- Construction Details : **CMU**
 - 4" Nominal
 - 8" Nominal
 - 4" Furring
 - 8" Furring
 - 8" Furring on 2 sides
- CMU Ratings
- Assignment
- USG Selector
- Exercises
- • • • •
- Wrap Up



**1 LAYER 5/8" GWB ON EACH SIDE OF
6" METAL STUD FRAME**

Partition Types

7 1/4" Partition 6" Stud (non-rated)

Partition Types

▪ **Sample Sheet**

▪ **Construction Details : GWB**

- 7 1/4"
- 4 7/8"
- 4 1/4"
- 6 1/8" (2 hr)
- Shaft (1 hr)
- Chase (1 hr)

▪ **Construction Details : CMU**

- 4" Nominal
- 8" Nominal
- 4" Furring
- 8" Furring
- 8" Furring on 2 sides

▪ **CMU Ratings**

- Assignment
- USG Selector
- Exercises
-

▪ **Wrap Up**

Detail 4-1

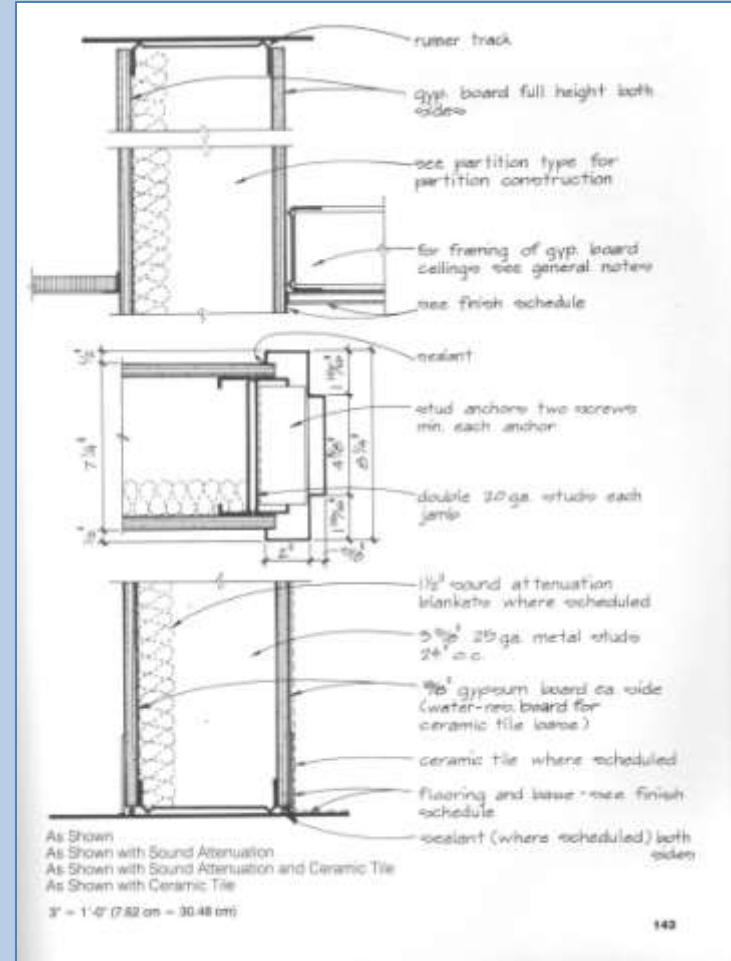
**Standard Gypsum Board Partition—
with 6" Metal Studs**

Possible Uses
As shown where 6" (15.24 cm) metal studs form the frame.

Remarks
This partition type detail incorporates four different conditions into a single graphic:

- a. The basic assembly, noted "As Shown."
- b. The basic assembly treated for acoustical purposes with sound-attenuation blankets, noted "As Shown with Sound Attenuation."
- c. The basic assembly treated both with sound-attenuation blankets, for acoustical purposes, and with ceramic tile, for conditions where mild to moderate moisture conditions might exist. Noted "As Shown with Sound Attenuation and Ceramic Tile," this partition is typical in toilet rooms that have tile on the walls and require acoustical separation from adjoining spaces.
- d. The basic assembly with ceramic tile on the walls, but without the sound attenuation. Noted "As Shown with Ceramic Tile," this partition is typical in toilet rooms that have tile on the walls but do not require acoustical separation from adjoining spaces.

A fifth condition would be to revise the gypsum board note to read, "Type X Gypsum Board," thereby creating a one-hour fire-rated partition. The variations using sound attenuation and tile could then be applied to the fire-rated partition.



- **As Shown**
- **As Shown with Sound Attenuation**
- **As Shown with Sound Attenuation & Ceramic Tile**
- **As Shown with Ceramic Tile**

**1 LAYER 5/8" GWB ON EACH SIDE OF
3 5/8" METAL STUD FRAME**

Partition Types

4 7/8" Partition 3 5/8" Stud (non-rated)

Partition Types

- Sample Sheet
- Construction Details : GWB
 - 7 1/4"
 - 4 7/8"
 - 4 1/4"
 - 6 1/8" (2 hr)
 - Shaft (1 hr)
 - Chase (1 hr)

- Construction Details : CMU
 - 4" Nominal
 - 8" Nominal
 - 4" Furring
 - 8" Furring
 - 8" Furring on 2 sides

CMU Ratings

- Assignment
- USG Selector
- Exercises
-

Wrap Up

Detail 4-2

**Standard Gypsum Board Partition—
with 3 5/8" Metal Studs**

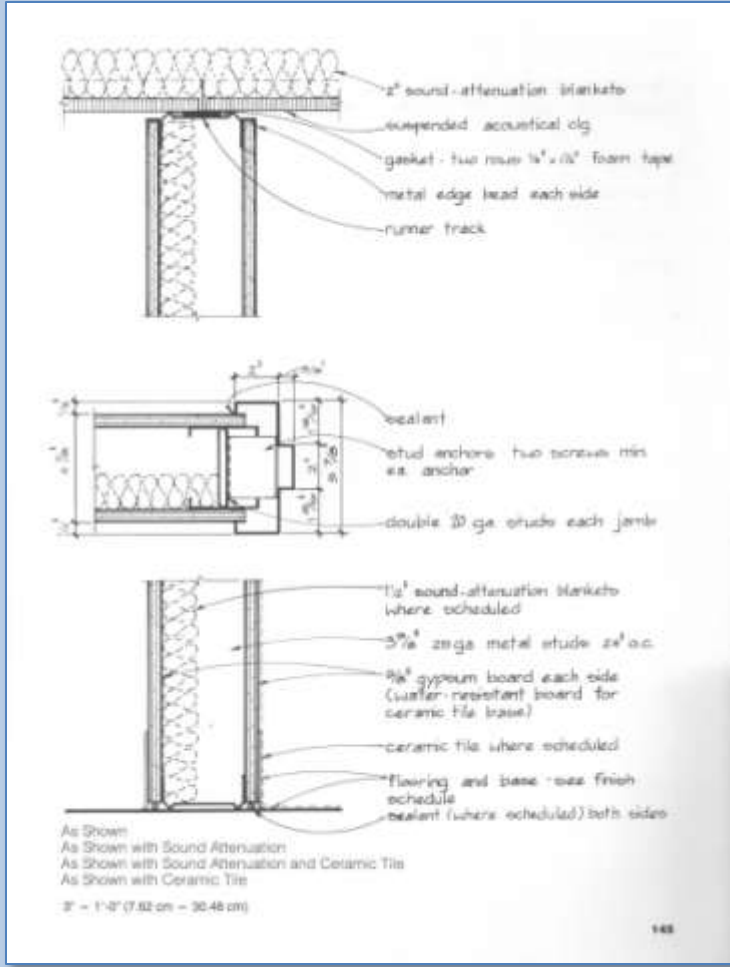
Possible Uses
As shown where 3 5/8" metal studs form the frame.

Remarks
This partition type detail incorporates four different conditions into a single graphic:

- a. The basic assembly, noted "As Shown."
- b. The basic assembly treated for acoustical purposes with sound-attenuation blankets, noted "As Shown with Sound Attenuation."
- c. The basic assembly treated both with sound-attenuation blankets, for acoustical purposes, and with ceramic tile, for conditions where mild to moderate moisture conditions might exist. Noted "As Shown with Sound Attenuation and Ceramic Tile," this partition is typical in toilet rooms that have tile on the walls and require acoustical separation from adjoining spaces.
- d. The basic assembly with ceramic tile on the walls, but without the sound attenuation. Noted "As Shown with Ceramic Tile," this partition is typical in toilet rooms that have tile on the walls but do not require acoustical separation from adjoining spaces.

A fifth condition would be to revise the gypsum board note to read, "Type X Gypsum Board," thereby creating a one-hour fire-rated partition. The variations using sound attenuation and tile could then be applied to the fire-rated partition.

- **As Shown**
- **As Shown with Sound Attenuation**
- **As Shown with Sound Attenuation & Ceramic Tile**
- **As Shown with Ceramic Tile**



1 LAYER 5/8" GWB ON ONE SIDE OF
3 5/8" METAL STUD FRAME

Partition Types

4 1/4" Partition 3 5/8" Stud (non-rated)

Partition Types

Sample Sheet

Construction Details : GWB

- 7 1/4"
- 4 7/8"
- 4 1/4"
- 6 1/8" (2 hr)
- Shaft (1 hr)
- Chase (1 hr)

Construction Details : CMU

- 4" Nominal
- 8" Nominal
- 4" Furring
- 8" Furring
- 8" Furring on 2 sides

CMU Ratings

- Assignment
- USG Selector
- Exercises
-

Wrap Up

Detail 4-3

One-Sided Standard Gypsum Board Partition—with 3 5/8" Metal Studs

Possible Uses

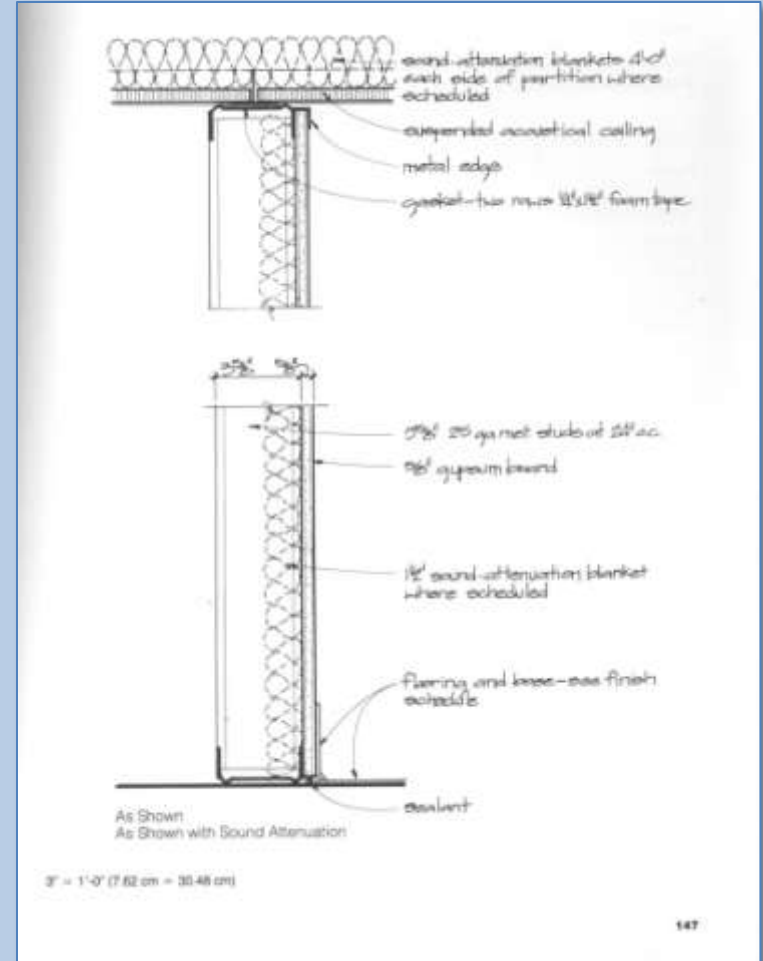
When only one side of a wall needs to be finished, such as in an uninhabited space, an unfinished storage room, or an unfinished area that will be completed at a later date when it is occupied by a tenant.

Remarks

This partition type detail incorporates two different conditions into a single graphic:

- a. The basic assembly, noted "As Shown."
- b. The basic assembly treated for acoustical purposes with sound-attenuation blankets, noted "As Shown with Sound Attenuation."

- As Shown
- As Shown with Sound Attenuation



2 LAYERS 5/8" "TYPE X" GWB ON EACH SIDE OF 3 5/8" METAL STUD FRAME

Partition Types

6 1/8" Partition 3 5/8" Stud (2 HR rated)

Partition Types

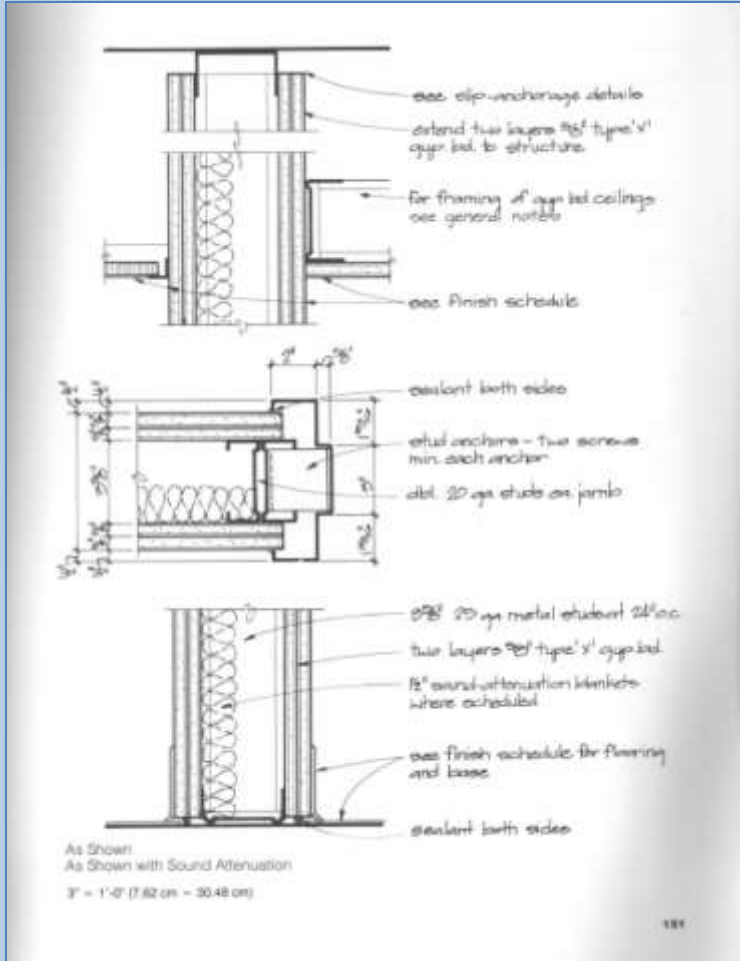
- Sample Sheet
- Construction Details : GWB
 - 7 1/4"
 - 4 7/8"
 - 4 1/4"
 - 6 1/8" (2 hr)
 - Shaft (1 hr)
 - Chase (1 hr)
- Construction Details : CMU
 - 4" Nominal
 - 8" Nominal
 - 4" Furring
 - 8" Furring
 - 8" Furring on 2 sides
- CMU Ratings
- Assignment
- USG Selector
- Exercises
- • • • •
- Wrap Up

Detail 4-5

Fire-Rated Gypsum Board Partition

Possible Uses
Where a two-hour fire rating is needed and gypsum board is the desired wall material.

Remarks
This partition type detail incorporates two different conditions into a single graphic:
a. The basic assembly, noted "As Shown."
b. The basic assembly treated for acoustical purposes with sound-attenuation blankets, noted "As Shown with Sound Attenuation."



- As Shown
- As Shown with Sound Attenuation

1" GWB SHAFT WALL LINER and 1 LAYER 5/8" SHAFT WALL FACEBOARD with 2 1/2" C-H STUD FRAME

Partition Types

3 1/8" Shaft Partition 2 1/2" C-H Stud (1 HR rated)

Partition Types

Sample Sheet

Construction Details : GWB

- 7 1/4"
- 4 7/8"
- 4 1/4"
- 6 1/8" (2 hr)
- Shaft (1 hr)
- Chase (1 hr)

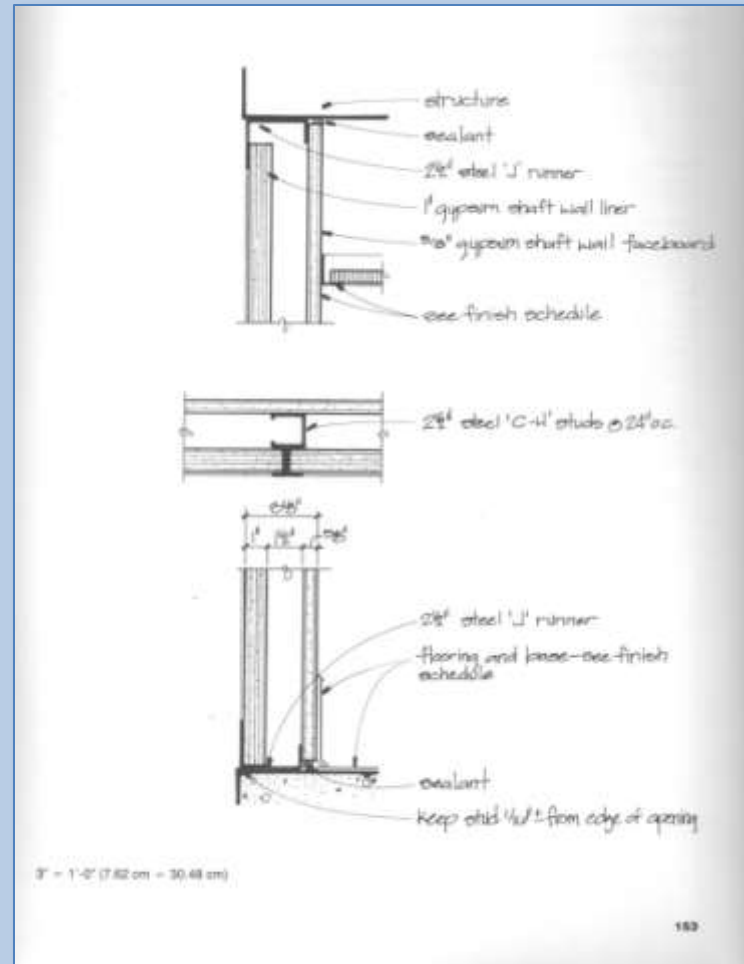
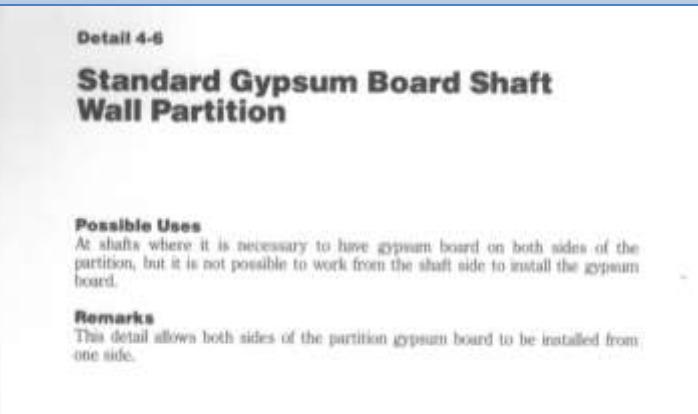
Construction Details : CMU

- 4" Nominal
- 8" Nominal
- 4" Furring
- 8" Furring
- 8" Furring on 2 sides

CMU Ratings

- Assignment
- USG Selector
- Exercises
-

Wrap Up



- As Shown
- For use at Elevators Shaft, Mechanical Shafts or Stairs Enclosures
- Allows for installation from one side

**1 LAYERS 5/8" GWB ON
EACH SIDE OF 1 5/8" METAL STUD FRAME**

Partition Types

Width Varies Chase Partition 1 5/8" Stud (1 HR rated)

Partition Types

- Sample Sheet
- Construction Details : GWB
 - 7 1/4"
 - 4 7/8"
 - 4 1/4"
 - 6 1/8" (2 hr)
 - Shaft (1 hr)
 - Chase (1 hr)
- Construction Details : CMU
 - 4" Nominal
 - 8" Nominal
 - 4" Furring
 - 8" Furring
 - 8" Furring on 2 sides

CMU Ratings

- Assignment
- USG Selector
- Exercises
-

Wrap Up

Detail 4-7

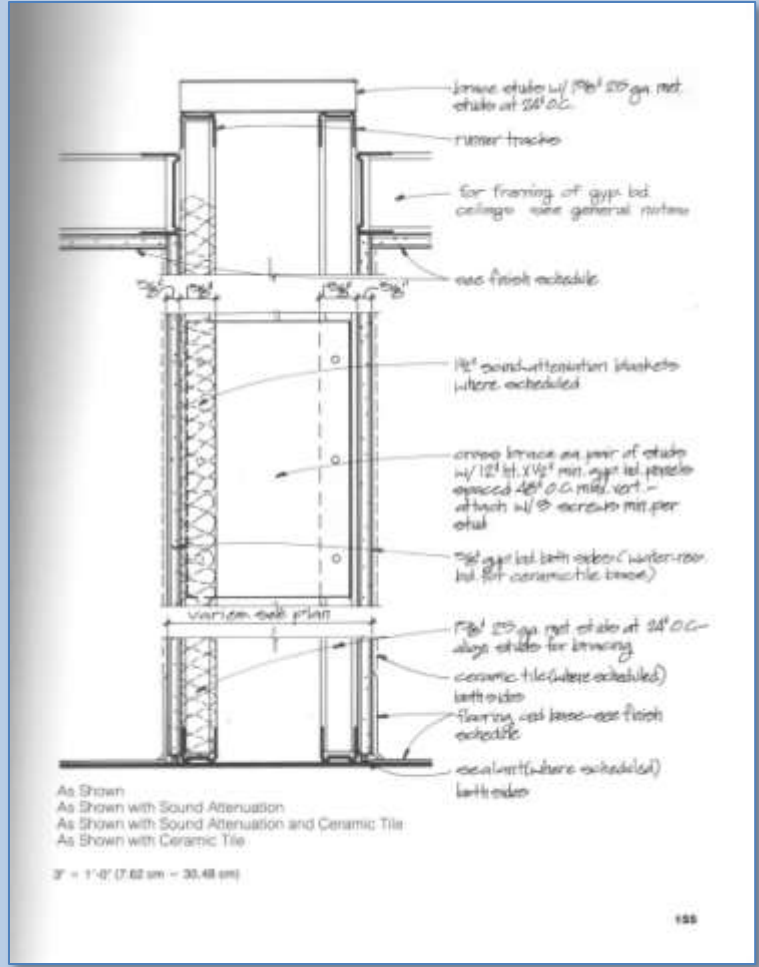
Standard Gypsum Board Chase Wall Partition

Possible Uses
Where it is necessary to have a large amount of space within the partition wall, such as at mechanical lines or toilet rooms.

Remarks
This partition type detail incorporates four different conditions into a single graphic:

- a. The basic assembly, noted "As Shown."
- b. The basic assembly treated for acoustical purposes with sound-attenuation blankets, noted "As Shown with Sound Attenuation."
- c. The basic assembly treated both with sound-attenuation blankets, for acoustical purposes, and with ceramic tile, for conditions where mild to moderate moisture conditions might exist. Noted "As Shown with Sound Attenuation and Ceramic Tile," this partition is typical in toilet rooms that have tile on the walls and require acoustical separation from adjoining spaces.
- d. The basic assembly with ceramic tile on the walls, but without the sound attenuation. Noted "As Shown with Ceramic Tile," this partition is typical in toilet rooms that have tile on the walls but do not require acoustical separation from adjoining spaces.

- As Shown
- As Shown with Sound Attenuation
- As Shown with Sound Attenuation & Ceramic Tile
- As Shown with Ceramic Tile



**4" Nominal (3 5/8" Actual)
Concrete Masonry Unit (CMU)**

Partition Types

4" Nominal Concrete Block Wall (rated)

Partition Types

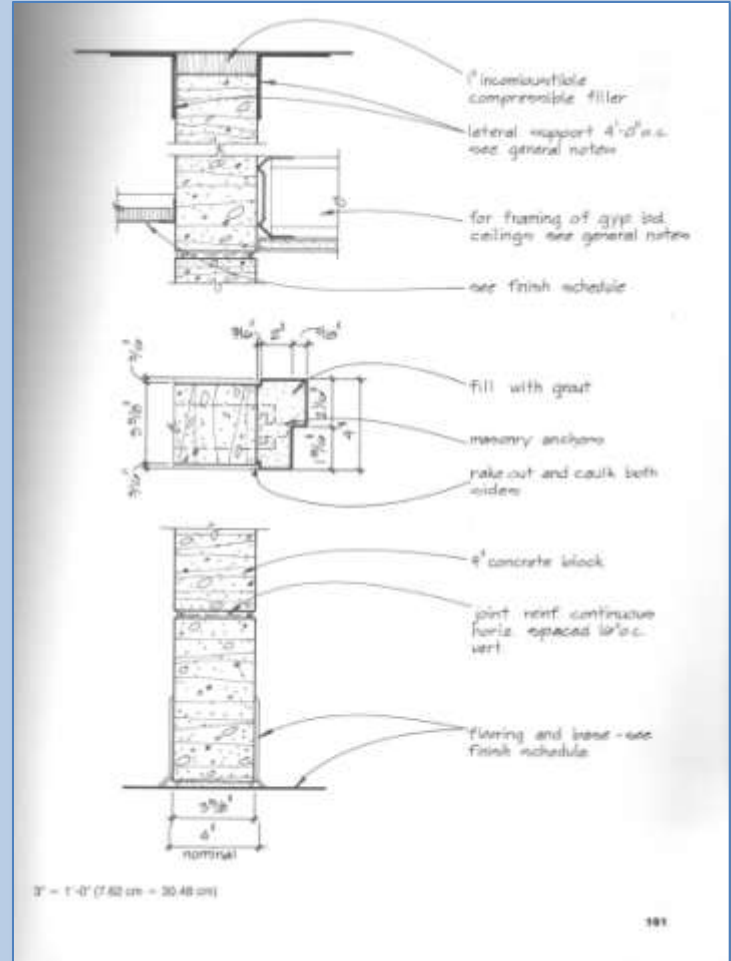
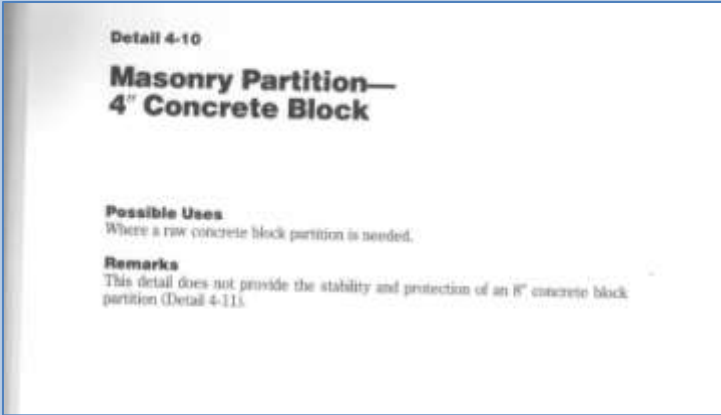
- Sample Sheet
- Construction Details : **GWB**
 - 7 1/4"
 - 4 7/8"
 - 4 1/4"
 - 6 1/8" (2 hr)
 - Shaft (1 hr)
 - Chase (1 hr)

- Construction Details : **CMU**
 - 4" Nominal
 - 8" Nominal
 - 4" Furring
 - 8" Furring
 - 8" Furring on 2 sides

CMU Ratings

- Assignment
- USG Selector
- Exercises
-

Wrap Up



- **As Shown**
- **Block walls are to be coursed out both in plan and elevation / section**

8" Nominal (6 5/8" Actual) Concrete Masonry Unit (CMU)

Partition Types

8" Nominal Concrete Block Wall (rated)

Partition Types

- Sample Sheet
- Construction Details : GWB
 - 7 1/4"
 - 4 7/8"
 - 4 1/4"
 - 6 1/8" (2 hr)
 - Shaft (1 hr)
 - Chase (1 hr)

Construction Details : CMU

- 4" Nominal
- 8" Nominal
- 4" Furring
- 8" Furring
- 8" Furring on 2 sides

CMU Ratings

- Assignment
- USG Selector
- Exercises
-

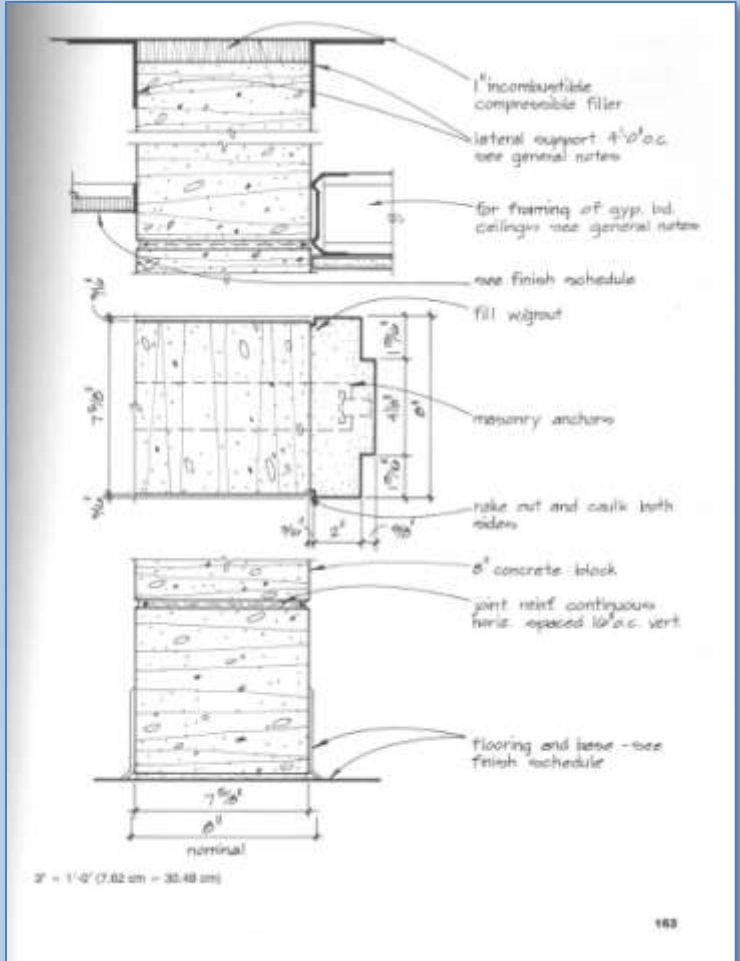
Wrap Up

Detail 4-11

Masonry Partition— 8" Concrete Block

Possible Uses
At service areas, shafts, or high-abuse areas.

Remarks
This detail can provide a two-hour fire rating, but it must be noted on the drawing if desired. The project specification must describe the specifics of the assembly.



- As Shown
- Block walls are to be coursed out both in plan and elevation / section

4" Nominal (3 5/8" Actual) W/ 1 LAYER 5/8" GWB on 7/8" FURRING STRIPS ONE SIDE

Partition Types

4" Nominal Concrete Block Wall with Furring (Rated)

Partition Types

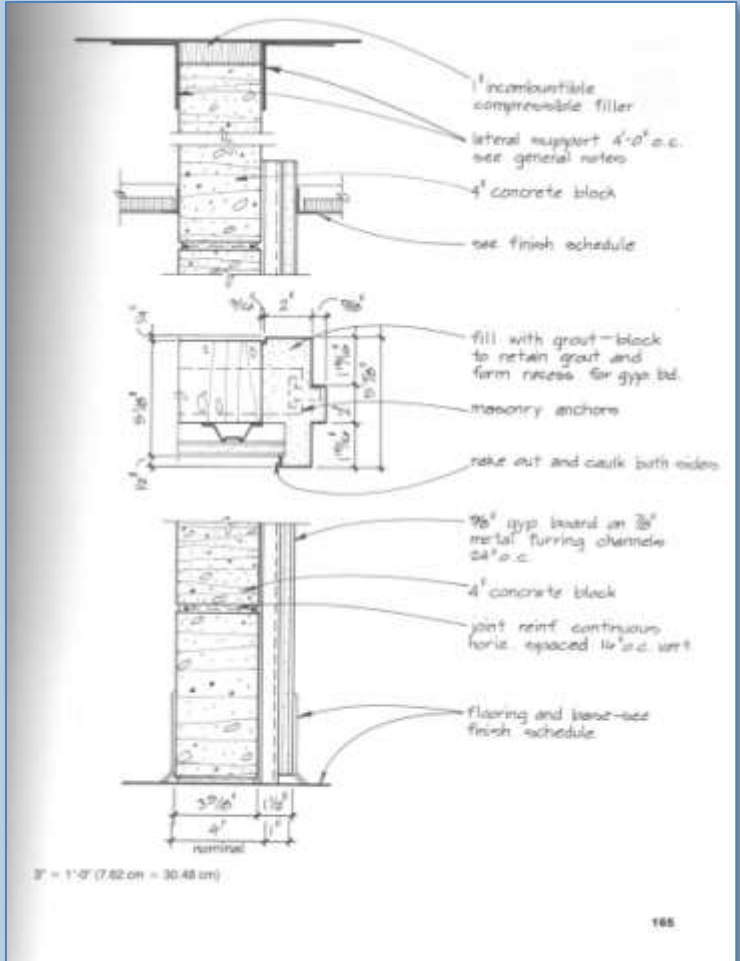
- Sample Sheet
- Construction Details : GWB
 - 7 1/4"
 - 4 7/8"
 - 4 1/4"
 - 6 1/8" (2 hr)
 - Shaft (1 hr)
 - Chase (1 hr)
- Construction Details : CMU
 - 4" Nominal
 - 8" Nominal
 - 4" Furring
 - 8" Furring
 - 8" Furring on 2 sides

Detail 4-12

**Masonry Partition—
Furred 4" Concrete Block**

Possible Uses
Provides benefits of concrete block partition on one side, while presenting a nicer finish on the other side.

Remarks
None.



- **As Shown**
- **Block walls are to be coursed out both in plan and elevation / section**

8" Nominal (7 5/8" Actual) W/ 1 LAYER 5/8" GWB on
7/8" FURRING STRIPS ONE SIDE

Partition Types

8" Nominal Concrete Block Wall with Furring (Rated)

Partition Types

- Sample Sheet

- Construction Details : GWB

- 7 1/4"
- 4 7/8"
- 4 1/4"
- 6 1/8" (2 hr)
- Shaft (1 hr)
- Chase (1 hr)

- Construction Details : CMU

- 4" Nominal
- 8" Nominal
- 4" Furring
- 8" Furring
- 8" Furring on 2 sides

- CMU Ratings

- Assignment
- USG Selector
- Exercises
-

- Wrap Up

Detail 4-13

Masonry Partition— Furred 8" Concrete Block

Possible Uses

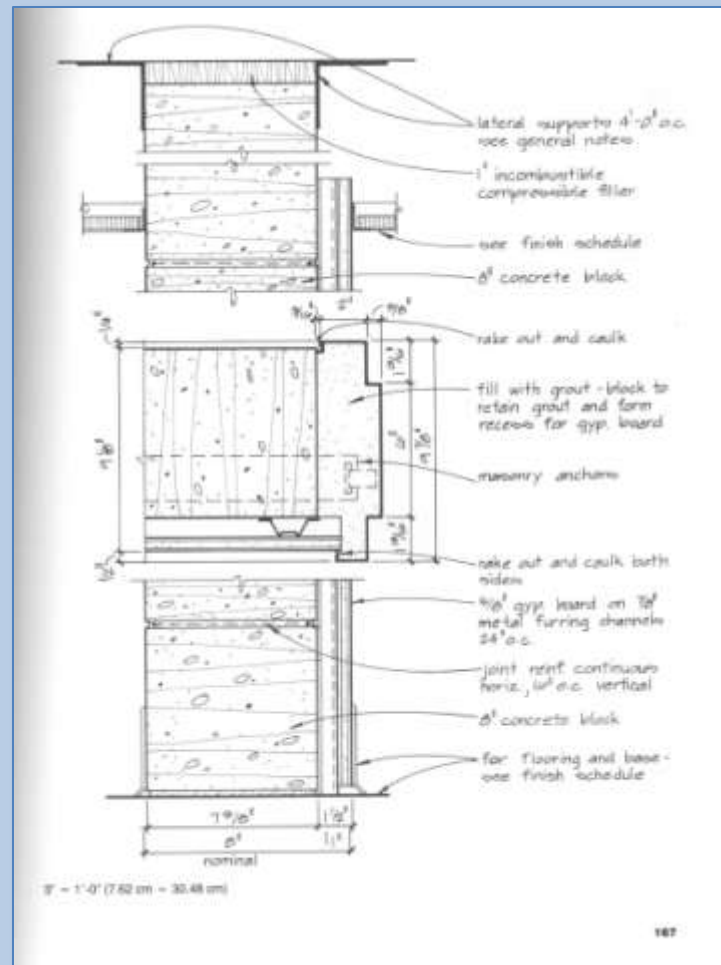
Provides benefits of concrete block partition on one side, while presenting a nicer finish on the other side.

Remarks

This detail can provide a two-hour fire rating, but it must be noted on the drawing if desired. The project specification must describe the specifics of the assembly.

- As Shown

- Block walls are to be coursed out both in plan and elevation / section



**8" Nominal (7 5/8" Actual) W/ 1 LAYER 5/8" GWB on
7/8" FURRING STRIPS EACH SIDE**

Partition Types

8" Nominal Concrete Block Wall with Furring (Rated)

Partition Types

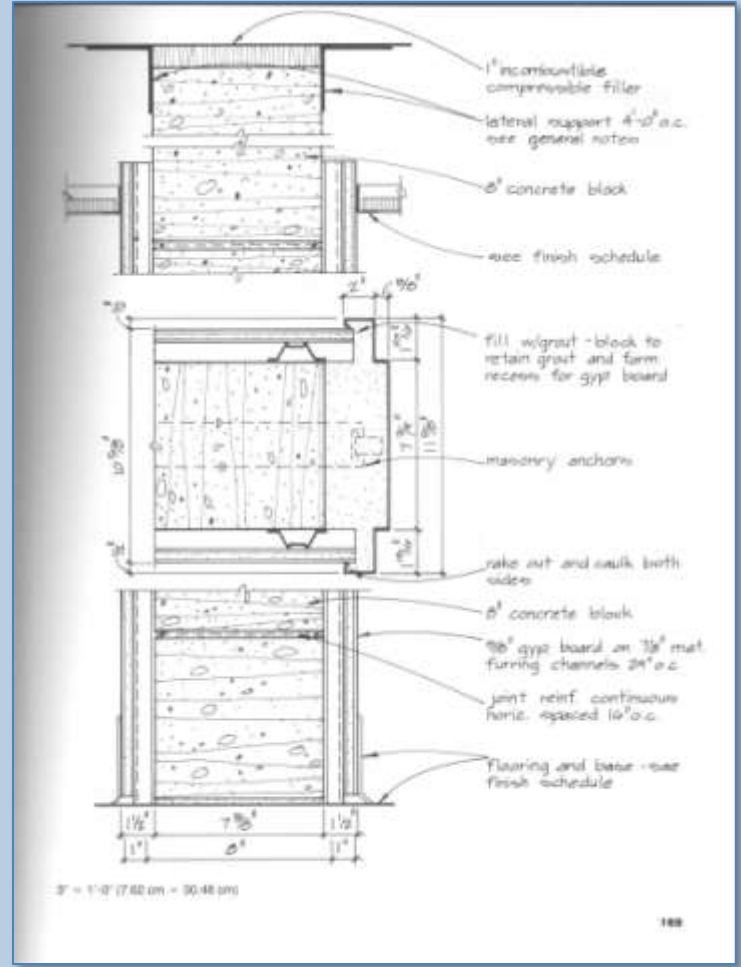
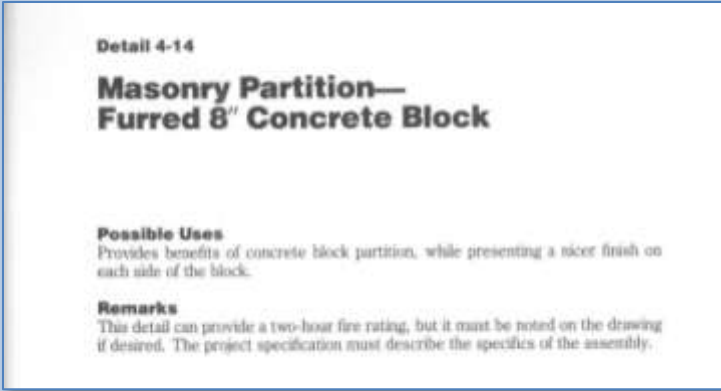
- Sample Sheet
- Construction Details : GWB
 - 7 1/4"
 - 4 7/8"
 - 4 1/4"
 - 6 1/8" (2 hr)
 - Shaft (1 hr)
 - Chase (1 hr)

- Construction Details : CMU
 - 4" Nominal
 - 8" Nominal
 - 4" Furring
 - 8" Furring
 - 8" Furring on 2 sides

CMU Ratings

- Assignment
- USG Selector
- Exercises
- • • • •

Wrap Up



- **As Shown**
- **Block walls are to be coursed out both in plan and elevation / section**
- **With Furring on both sides coursing is not mandatory**

Fire Ratings of Concrete Masonry Assemblies

Partition Types

- Sample Sheet
- Construction Details : GWB
 - 7 1/4"
 - 4 7/8"
 - 4 1/4"
 - 6 1/8" (2 hr)
 - Shaft (1 hr)
 - Chase (1 hr)

- Construction Details : CMU
 - 4" Nominal
 - 8" Nominal
 - 4" Furring
 - 8" Furring
 - 8" Furring on 2 sides

CMU Ratings

- Assignment
- USG Selector
- Exercises
-

Wrap Up

tion from the original tested wall assembly is allowed, including unit size, shape, mix design, constituent materials, and even the plant of manufacture.

For prescriptive designs, the IBC provides a series of tables that describe requirements of various as-

to

ast

on

ry

Fire testing of wall assemblies is conducted in accordance with the *Standard Test Methods for Fire Tests of Building Construction and Materials*, ASTM E119 (ref. 4), which measures four performance criteria, as follows:

- resistance to the transmission of heat through the wall assembly.

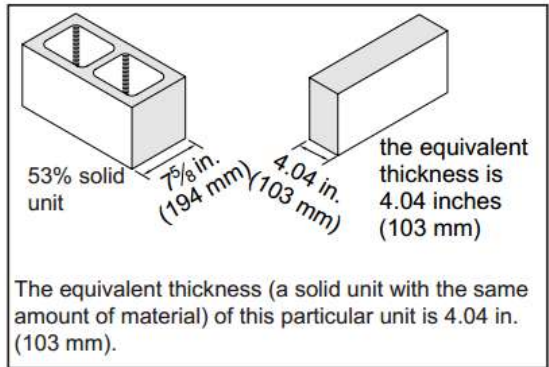


Figure 1—Equivalent Thickness

- Ratings will vary depending upon:
 - the width of the material
 - the percentage of solid
 - the composition
 - the assembly

Table 2—Equivalent Thicknesses of Concrete Masonry Units, in. (mm)

Nominal width, in. (mm)	Based on typical hollow units ^A	Based on percent solid	
		(75%)	(100%)
4 (102)	2.7 (69) [73.8]	2.7 (69)	3.6 (91)
6 (152)	3.1 (79) [55.0]	4.2 (107)	5.6 (142)
8 (203)	4.0 (102) [53.0]	5.7 (145)	7.6 (193)
10 (254)	4.5 (113) [46.3]	7.2 (183)	9.6 (244)
12 (305)	5.1 (129) [44.0]	8.7 (221)	11.6 (295)
14 (356)	5.5 (139) [40.2]	10.2 (259)	13.6 (345)
16 (406)	6.0 (152) [38.4]	11.7 (297)	15.6 (396)

^A Values in brackets [] are percent solid values based on typical two-core concrete masonry units.

certainly preferable to a structural collapse endpoint, characteristic of many other building materials.

Partition Types

Sample Sheet

Construction Details : GWB

- 7 1/4"
- 4 7/8"
- 4 1/4"
- 6 1/8" (2 hr)
- Shaft (1 hr)
- Chase (1 hr)

Construction Details : CMU

- 4" Nominal
- 8" Nominal
- 4" Furring
- 8" Furring
- 8" Furring on 2 sides

CMU Ratings

- Assignment
- USG Selector
- Exercises
-

Wrap Up

BTECH 3

Partition Types Assignment

 **NEW YORK CITY
COLLEGE OF TECHNOLOGY**
THE CITY UNIVERSITY OF NEW YORK

DEPARTMENT OF ARCHITECTURAL TECHNOLOGY

ARCH 2330 BUILDING TECHNOLOGY III

Assignment Number/Name: Partition Types

Computer Program(s): AutoCAD, Revit, Web Browser and Blackboard

Student Learning Objectives:
Upon successful completion of this assignment, the student will:

1. Be able to research and develop partition types
2. Construct three partition type details.

Student Skills Learning Objectives: (AutoCAD)
Upon successful completion, in addition to skills required by previous lessons the student will:

1. Be able to externally reference files and images.
2. Be able to add annotation and dimensions.
3. Create & Edit Blocks both architectural and for annotation.
4. Use hatching commands.
5. Use appropriate line weights and line patterns.

Assessment:
To evaluate the student's achievement of the learning objectives, the professor will do the following:

1. Evaluate the student's partition types for accuracy and completeness.
2. Evaluate student's ability to research relevant information regarding construction of details.
3. Drawing will be evaluated on its own and as part of the AutoCAD drawing set submission.

Project Description:
Students will research, develop and draw a series of standard partitions types to include the following:
For each wall type your drawing must show base condition, top condition and condition at ceiling all in section view and plan view.

1. Gypsum Wall Board & Stud Partitions for 1-hour, 2-hour and 3 hour rating. (3 types).
2. Each of the gypsum wall types must be evaluated to accommodate 12', 14' and 16' floor to floor heights and must also include sub-types with Sound Attenuation Blanket (types as needed)
3. 4" and 8" Nominal Block interior walls both glazed and unglazed. (2 types)
4. Block walls with furring & with studs with Gypsum wallboard finish on 1 side. (2 types)
5. Shaft & Chase Walls. (2 types)

Process:

1. Research Gypsum wall types on USG website
2. Understand structural capabilities of different metal stud wall frames
3. Develop and draw all details.
4. Develop completed partitions sheet with annotations and dimensions.
5. Post completed sheet as a pdf and as a drawing file by the assigned deadline & add description.

References:

1. USG Design Studio <http://www.usgdesignstudio.com/>
2. USG Wall Selector <http://www.usgdesignstudio.com/wall-selector.asp>

© Westcott Hall • 100 Jay Street, Brooklyn, NY 11201-1900 • 718 200-1000 Fax: 718 204-8847 • www.citytech.cuny.edu



Project Description:

Students will research, develop and draw a series of standard partitions types to include the following. For each wall type your drawing must show base condition, top condition and condition at ceiling all in section view and plan view.

1. Gypsum Wall Board & Stud Partitions for 1-hour, 2-hour and 3 hour rating. (3 types)
2. Each of the gypsum wall types must be evaluated to accommodate 12', 14' and 16' floor to floor heights and must also include sub-types with Sound Attenuation Blanket (types as needed)
3. 4" and 8" Nominal Block interior walls both glazed and unglazed. (2 types)
4. Block walls with furring & with studs with Gypsum wallboard finish on 1 side. (2 types)
5. Shaft & Chase Walls. (2 types)

Process:

1. Research Gypsum wall types on USG website
2. Understand structural capabilities of different metal stud wall frames
3. Develop and draw all details.
4. Develop completed partitions sheet with annotations and dimensions.
5. Post completed sheet as a pdf and as a drawing file by the assigned deadline & add description.

US Gypsum Website Resource: Partition Types

Partition Types

- Sample Sheet
- Construction Details : GWB
 - 7 1/4"
 - 4 7/8"
 - 4 1/4"
 - 6 1/8" (2 hr)
 - Shaft (1 hr)
 - Chase (1 hr)
- Construction Details : CMU
 - 4" Nominal
 - 8" Nominal
 - 4" Furring
 - 8" Furring
 - 8" Furring on 2 sides

CMU Ratings

- Assignment
- **USG Selector**
- Exercises
- • • • •

Wrap Up

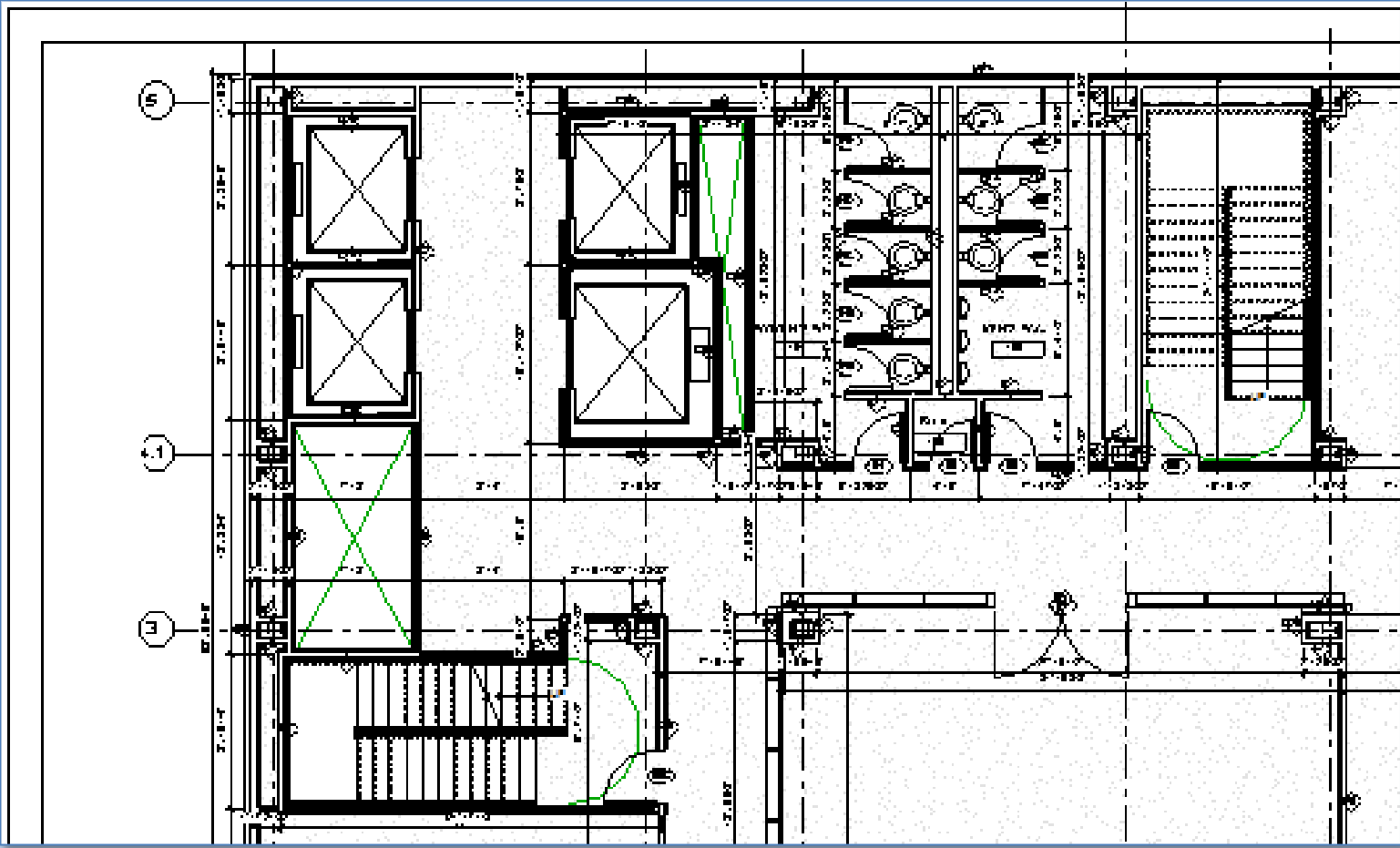
The screenshot displays the USG Design Studio website interface. At the top, there is a navigation bar with 'USG DESIGN STUDIO' and various menu items like 'System Selector', 'Ceilings', 'Sustainability', 'Details', 'Submittals/ MSDS', 'Support', and 'My Dashboard'. The main content area is titled 'Wall Selector' and features a sidebar with 'Wall Types' such as 'All Wall Types', 'Area Separation Wall', 'Chase Walls', 'Exterior Walls', 'Furred Masonry', 'Interior Partitions', and 'Shaft Wall'. The central focus is a detailed view of the 'GA WP-7008 Fire Rated System Design - Steel Stud (Non-loadbearing)'. This view includes a cross-section diagram showing a steel stud with a 3 1/8" dimension. Below the diagram, technical specifications are provided: 'Fire Rating: 1 hour', 'STC / Sound Test: N/A', and 'System Thickness: 3-1/8"'. A 'Detail Description' section lists materials like Gypsum Board, SHEETROCK® UltraLight Firecode X Gypsum Panels, Steel Studs, and Gypsum Board. The bottom of the browser window shows 'United States Gypsum Company' information and a 'Reference URL'.

Work as a Team to Identify Partition Types

Partition Types Exercise 1.2

Partition Types

- Sample Sheet
- Construction Details : **GWB**
 - 7 1/4"
 - 4 7/8"
 - 4 1/4"
 - 6 1/8" (2 hr)
 - Shaft (1 hr)
 - Chase (1 hr)
- Construction Details : **CMU**
 - 4" Nominal
 - 8" Nominal
 - 4" Furring
 - 8" Furring
 - 8" Furring on 2 sides
- CMU Ratings
- Assignment
- USG Selector
- Exercises
- Wrap Up

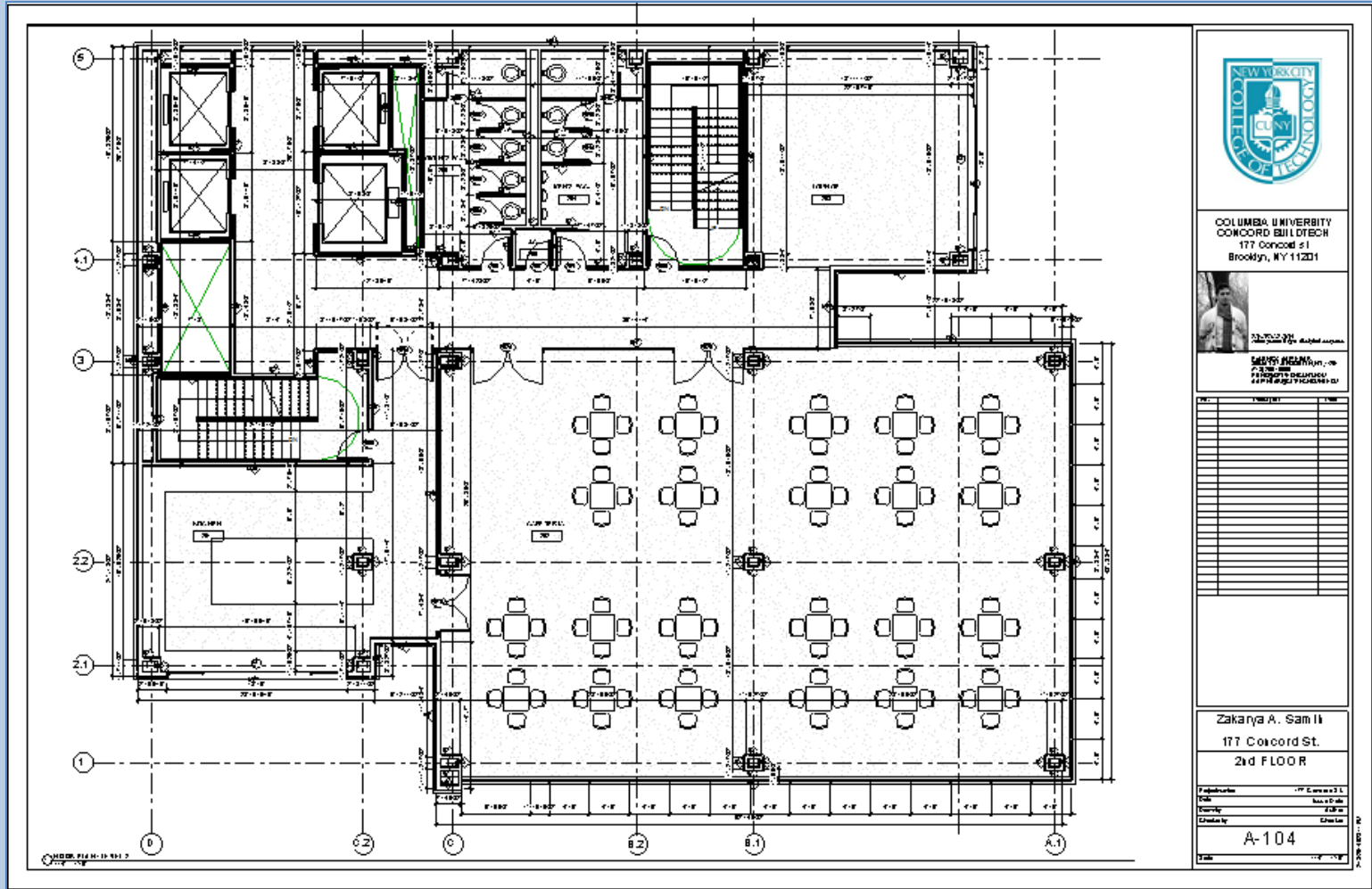


Work as a Team to Identify Partition Types

Partition Types Exercise 1.3

Partition Types

- Sample Sheet
- Construction Details : GWB
 - 7 1/4"
 - 4 7/8"
 - 4 1/4"
 - 6 1/8" (2 hr)
 - Shaft (1 hr)
 - Chase (1 hr)
- Construction Details : CMU
 - 4" Nominal
 - 8" Nominal
 - 4" Furring
 - 8" Furring
 - 8" Furring on 2 sides
- CMU Ratings
- Assignment
- USG Selector
- Exercises
- Wrap Up




Work as a Team to Identify Partition Types


Partition Types Exercise 1.4

Partition Types

- Sample Sheet
- Construction Details : **GWB**
 - 7 1/4"
 - 4 7/8"
 - 4 1/4"
 - 6 1/8" (2 hr)
 - Shaft (1 hr)
 - Chase (1 hr)
- Construction Details : **CMU**
 - 4" Nominal
 - 8" Nominal
 - 4" Furring
 - 8" Furring
 - 8" Furring on 2 sides
- CMU Ratings
- Assignment
- USG Selector
- Exercises
- Wrap Up



COLUMBIA UNIVERSITY
CONCORD HALL TECH
177 Concord St.
Brooklyn, NY 11201



Zakanya A. Samli
177 Concord St.
3rd FLOOR

Project: _____

Author: _____

Checker: _____

Date: _____

Scale: _____

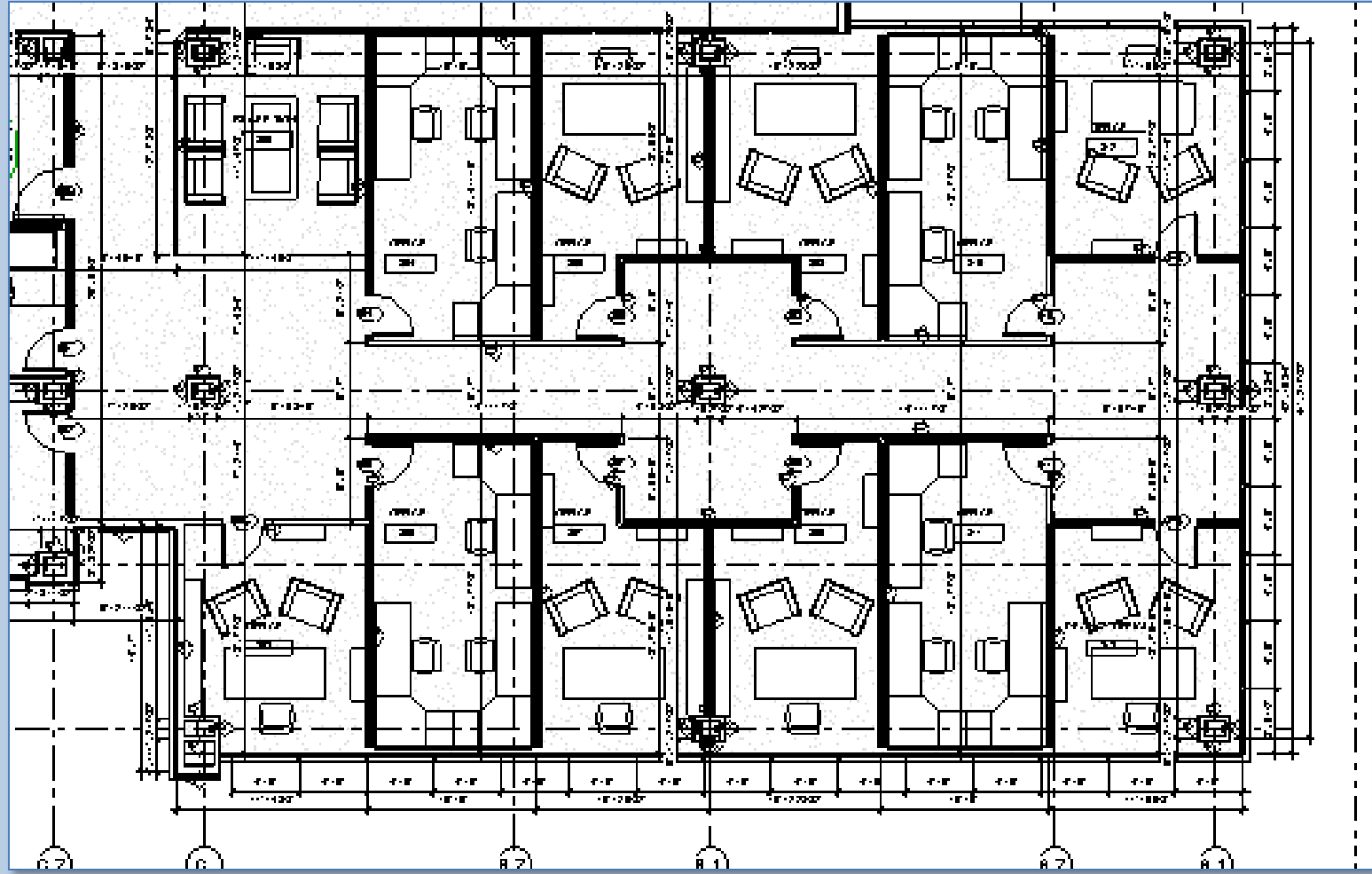
Sheet: **A-105**

Work as a Team to Identify Partition Types

Partition Types Exercise 1.5

Partition Types

- Sample Sheet
- Construction Details : GWB
 - 7 1/4"
 - 4 7/8"
 - 4 1/4"
 - 6 1/8" (2 hr)
 - Shaft (1 hr)
 - Chase (1 hr)
- Construction Details : CMU
 - 4" Nominal
 - 8" Nominal
 - 4" Furring
 - 8" Furring
 - 8" Furring on 2 sides
- CMU Ratings
- Assignment
- USG Selector
- Exercises
- Wrap Up



Partition Types

- Sample Sheet
- Construction Details : GWB
 - 7 1/4"
 - 4 7/8"
 - 4 1/4"
 - 6 1/8" (2 hr)
 - Shaft (1 hr)
 - Chase (1 hr)
- Construction Details : CMU
 - 4" Nominal
 - 8" Nominal
 - 4" Furring
 - 8" Furring
 - 8" Furring on 2 sides
- CMU Ratings
- Assignment
- USG Selector
- Exercises
- • • • •
- **Wrap Up**

Wrap Up

• Partition Types

▪ Sample Partition Sheet

▪ Construction Details

- GWB
- CMU
- CMU w/ Furring

▪ CMU Ratings

- Assignment
- USG Selector
- Exercises

▪ Wrap Up

Assignment : Step by Step

- *Layout Grid in Paperspace & Modelspace*
- *Fit partitions in compact layout*
- *Multiple types from single drawing*
- *Each partition type shows the following:*
 - *Section Views:*
 - *Top condition*
 - *Ceiling condition*
 - *Base condition*
 - *Plan View*
 - *Stud condition*