



Building Technology III New York City College of Technology

AutoCAD : Template

Professor Paul C. King, RA, AIA, ARA
Pking@CityTech.Cuny.Edu
Prof.Paul.King@Gmail.com

<http://professorpaulking.wordpress.com/>

<http://students.autodesk.com/>

Template

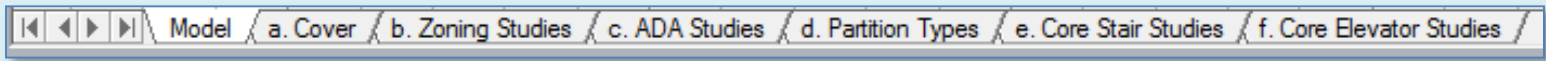
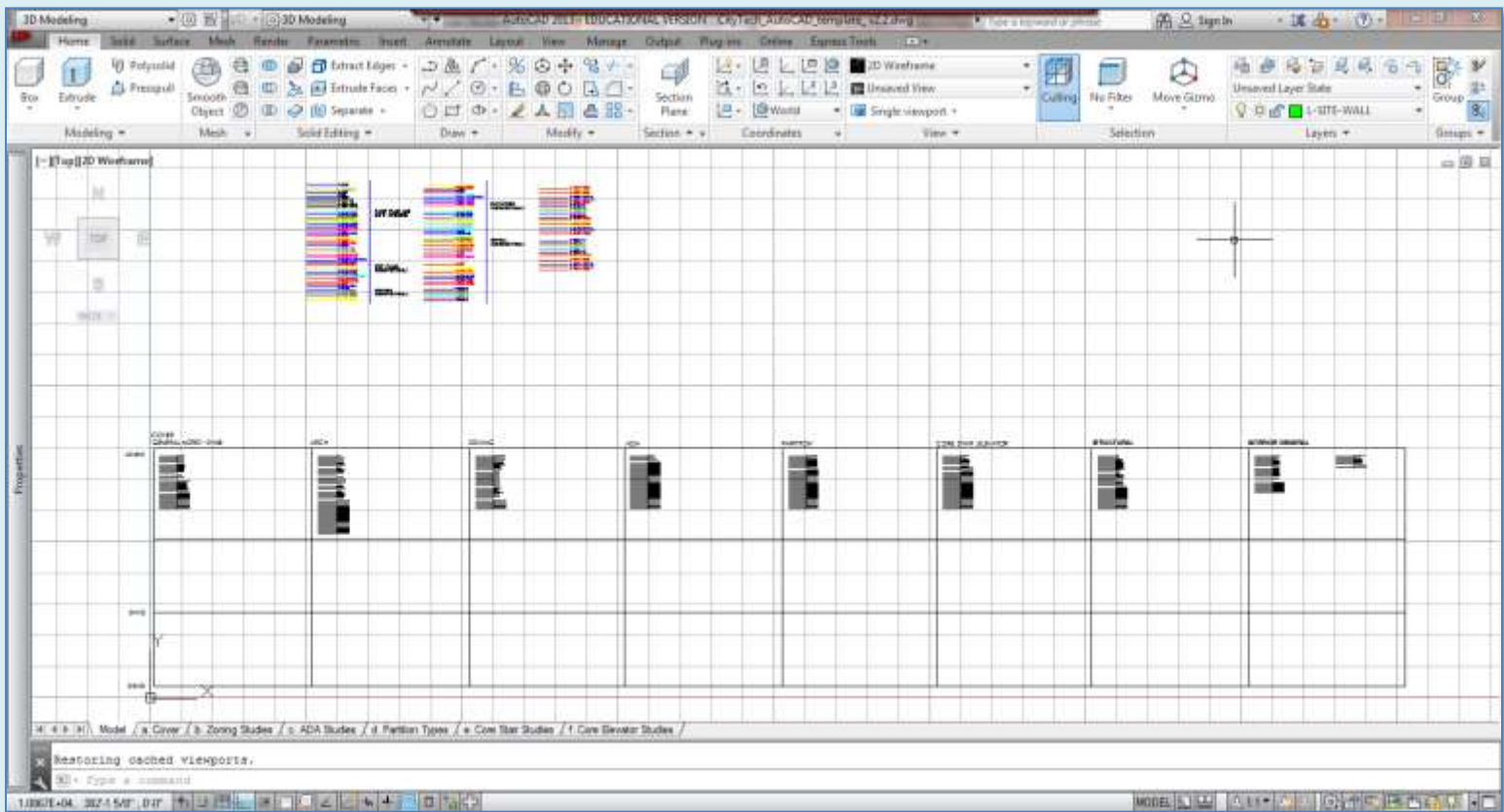
Template

Template
Paperspace Tabs

Layers
Standards File

Titleblock *(Xref)

Reference
Information



Template

The image displays a collection of architectural drawing templates, each presented as a grid with various sections and labels. The templates are:

- COVER GENERAL NOTES - SYMB**: Includes a 'Layers' section with a list of layer names and a corresponding legend of horizontal lines.
- ARCH**: Features a list of architectural layer names on the left and a legend of horizontal lines on the right.
- ZONING**: Contains a legend of horizontal lines representing different zoning categories.
- ADA**: Shows a list of layer names for accessibility standards.
- PARTITION**: Includes a list of layer names for partitioning.
- CORE. STAIR, ELEVATOR**: Lists layer names for core, stair, and elevator areas.
- STRUCTURAL**: Lists layer names for structural elements.
- INTERIOR GENERAL**: Lists layer names for interior general details.

Template

Template
Paperspace Tabs

Layers

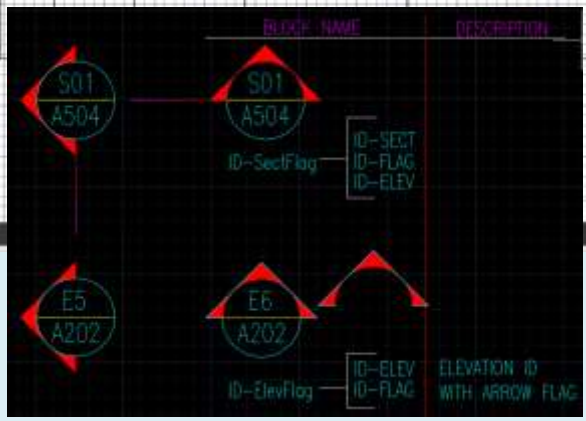
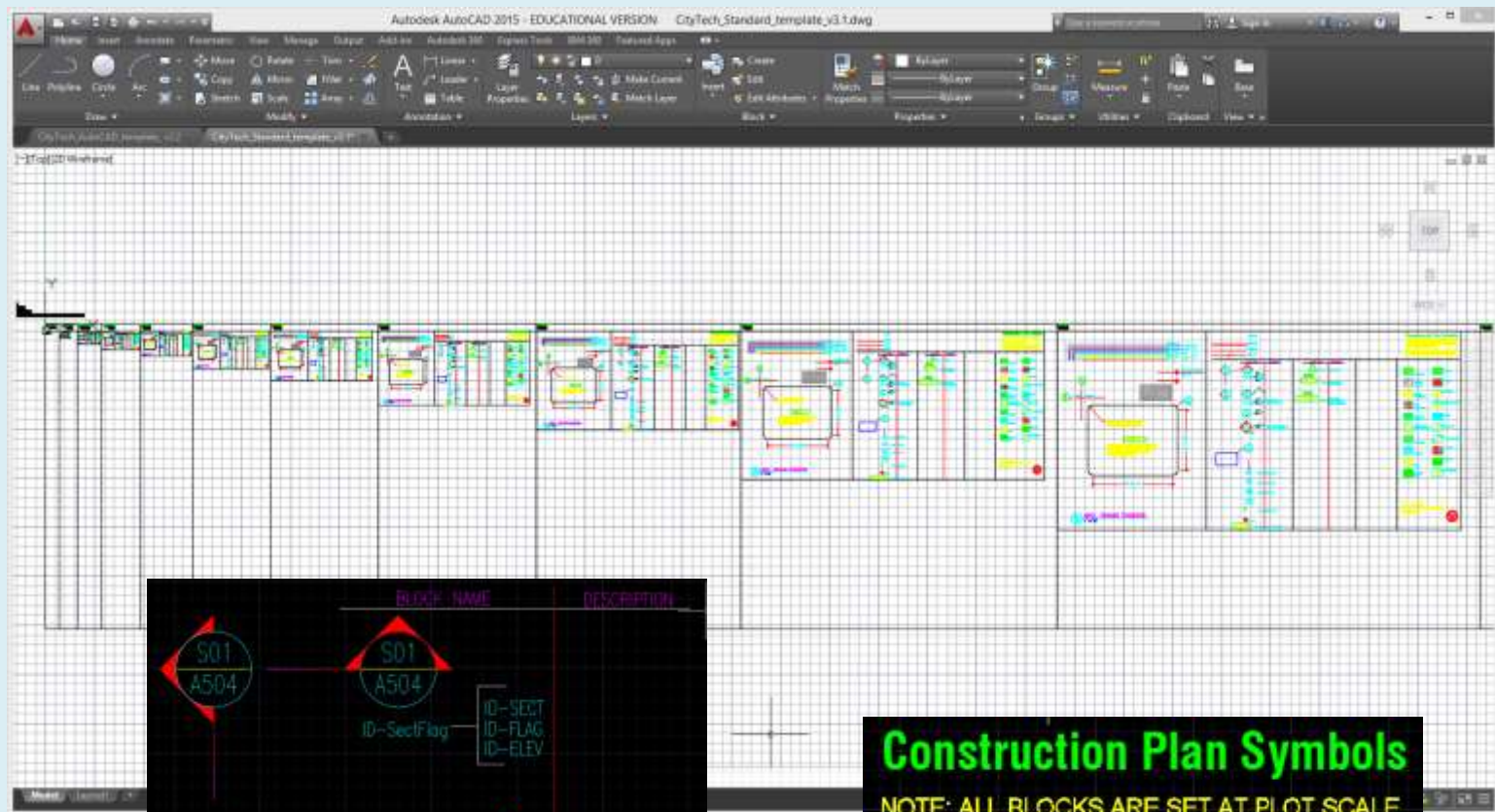
Standards File

Titleblock *(Xref)

Reference
Information

Symbol & Style Standards

- Template
- Template Paperspace Tabs
- Layers
- Standards File
- Titleblock *(Xref)
- Reference Information

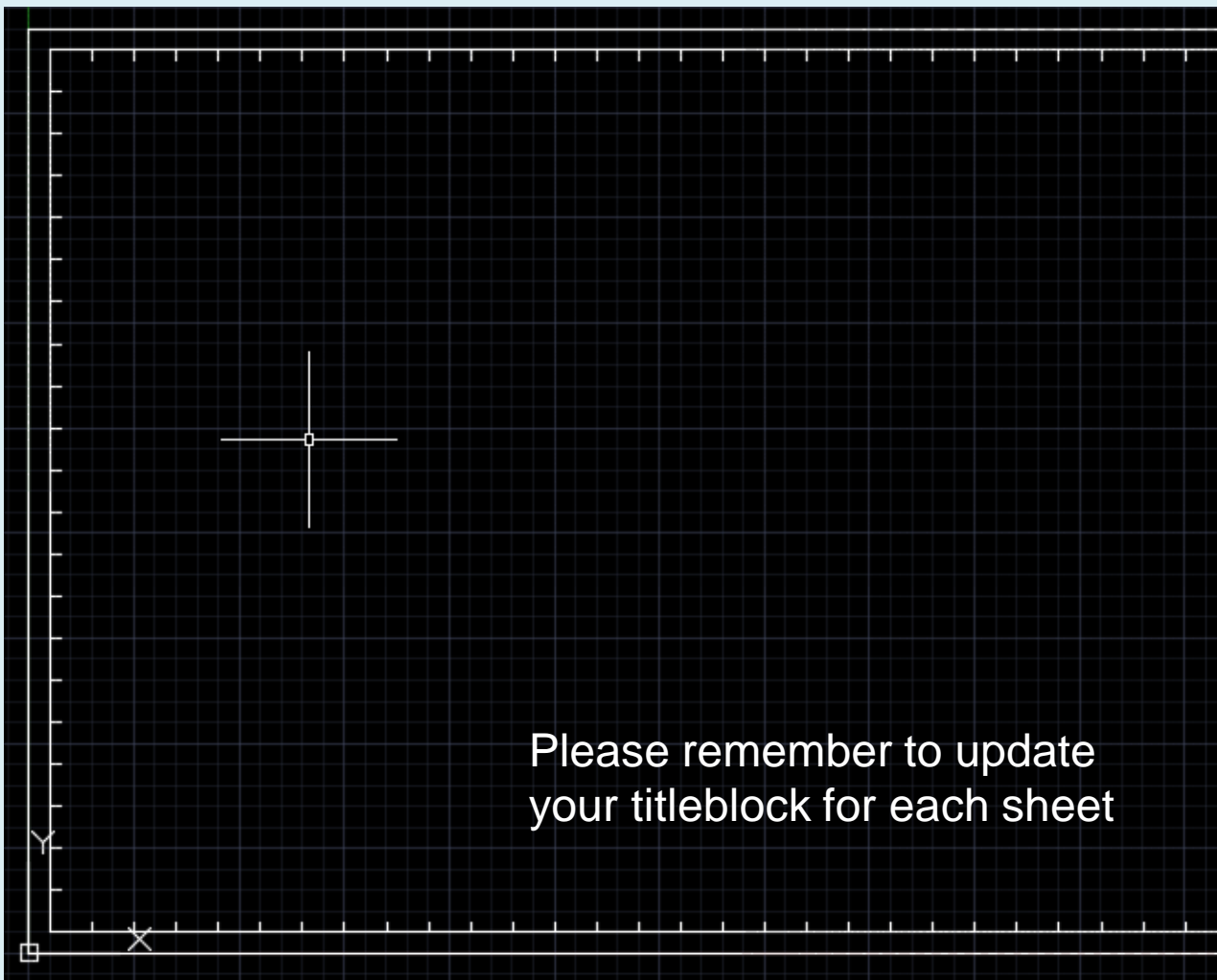


Construction Plan Symbols

NOTE: ALL BLOCKS ARE SET AT PLOT SCALE.
INSERT BLOCKS AT ANNOTATION SCALE OR COPY FROM CHART BELOW

(ie. for 1/8"=1'-0" insert block at scale of 96)
(ie. for 1/4"=1'-0" insert block at scale of 48)

Titleblock (Xref into Paperspace directly)



<u>PROJECT NAME</u>	
Address	
OWNER	
<u>COMPANY-TEAM NAME</u>	
ENGINEERS & CONSULTANTS	
ZONING	
Project number	Project Number
Date	Issue Date
Drawn by	Author
Professor Name	MNG
Checked by	Checker
A-110	
Scale	1/8" = 1'-0"
Grade	1/8" = 1'-0"

Template

Template
Paperspace Tabs

Layers

Standards File

Titleblock *(Xref)

Reference
Information

Template

FOR MORE LAYER GO TO
CityTech_AutoCAD_layer-guide_v1.1.EXCEL

TO PLOT USE.
City Tech Standard_v1.1 CTB

FOR CAD LIBRARY GO TO
City Tech Standard_v1.1 dwg



ZONING

Address



ZONING

Project number

Date

Drawn by

Professor Name

Checked by

A-110

Scale

Grade



Building Technology III

New York City College of Technology

AutoCAD : Template

Professor Paul C. King, RA, AIA, ARA
Pking@CityTech.Cuny.Edu
Prof.Paul.King@Gmail.com

<http://professorpaulking.wordpress.com/>

<http://students.autodesk.com/>