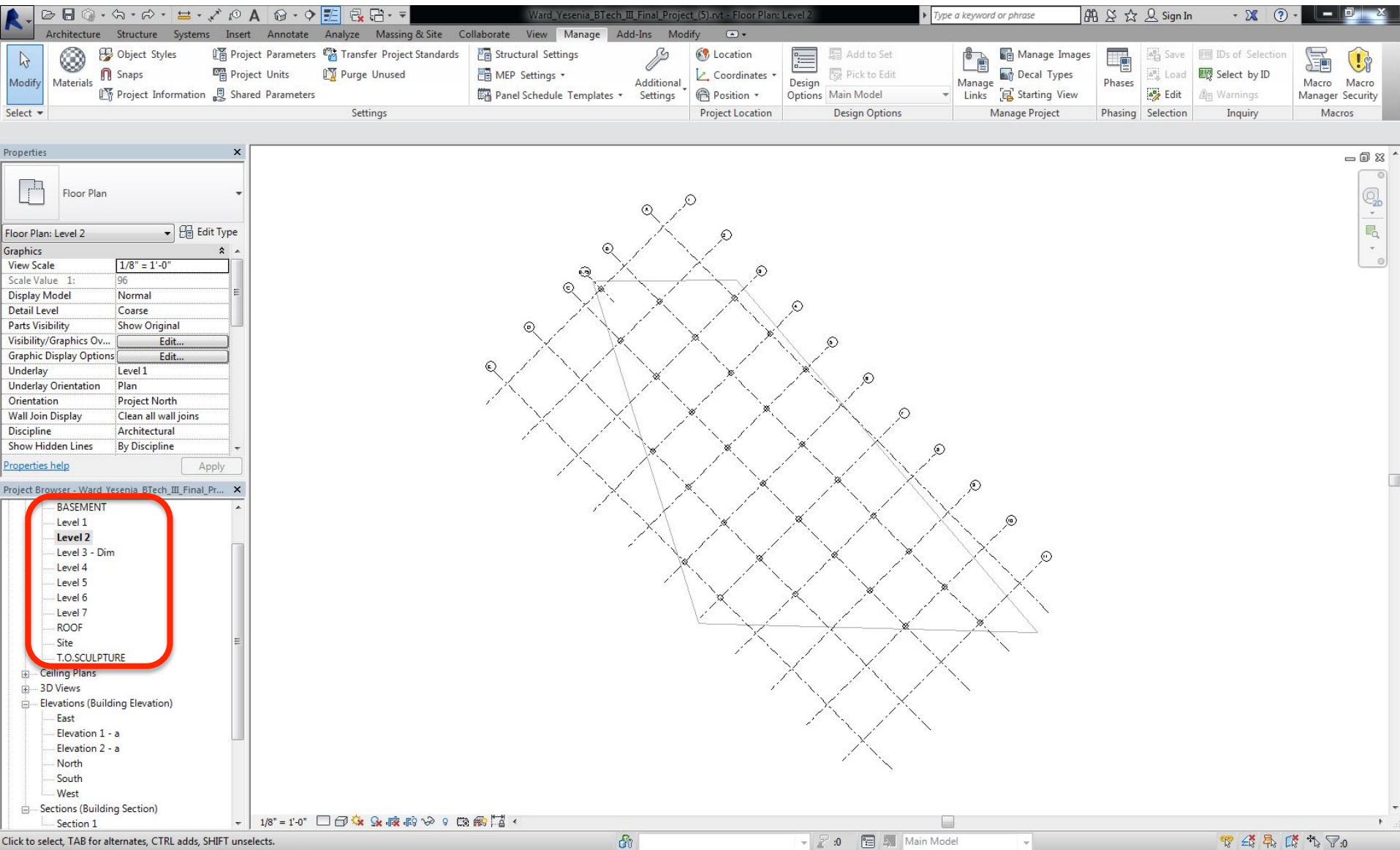


BUILDING TECHNOLOGY 3

TUTORIAL 2: REVIT – SETTING PROJECT NORTH

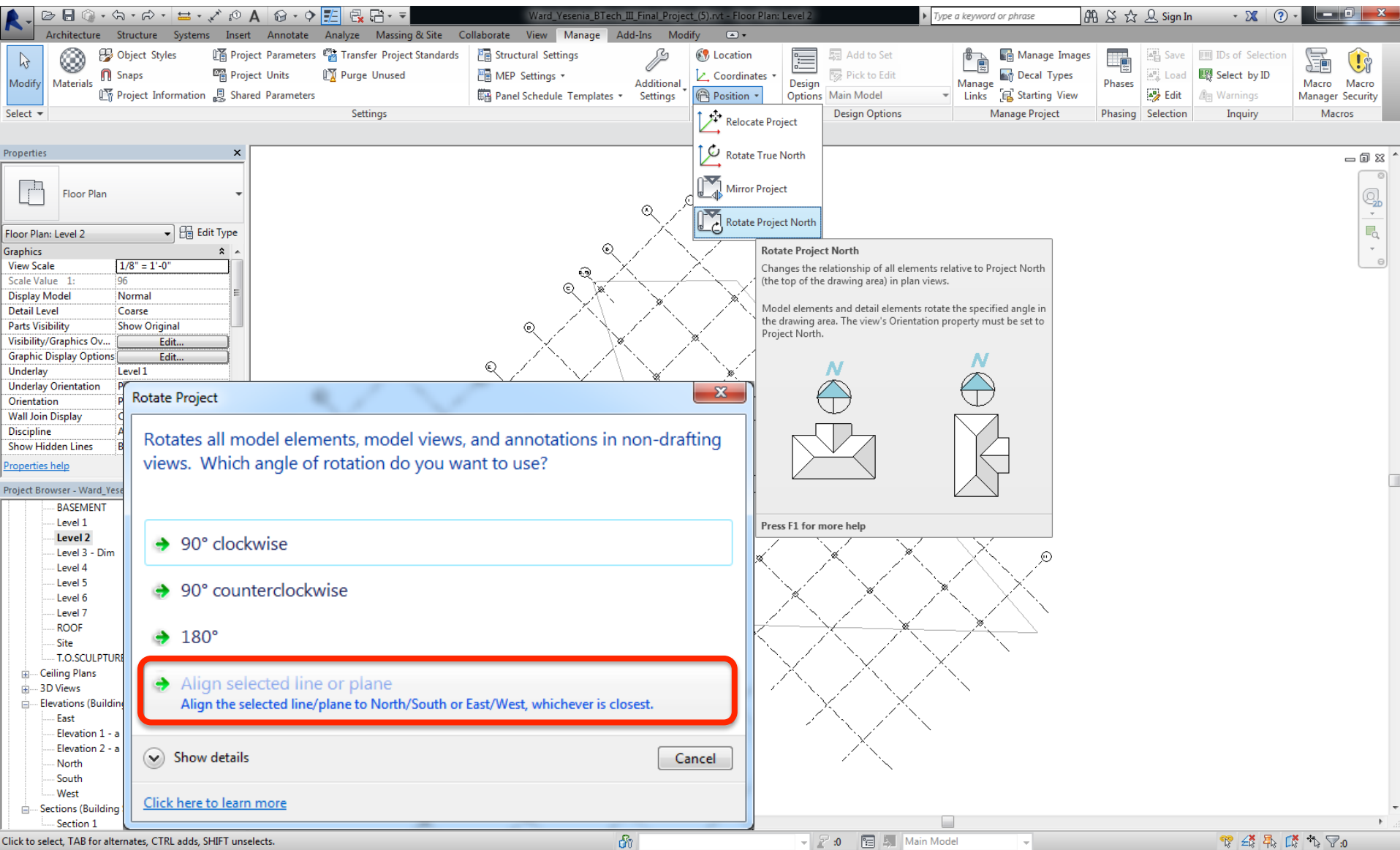
SETTING PROJECT NORTH

Open Revit file > Find a plan view



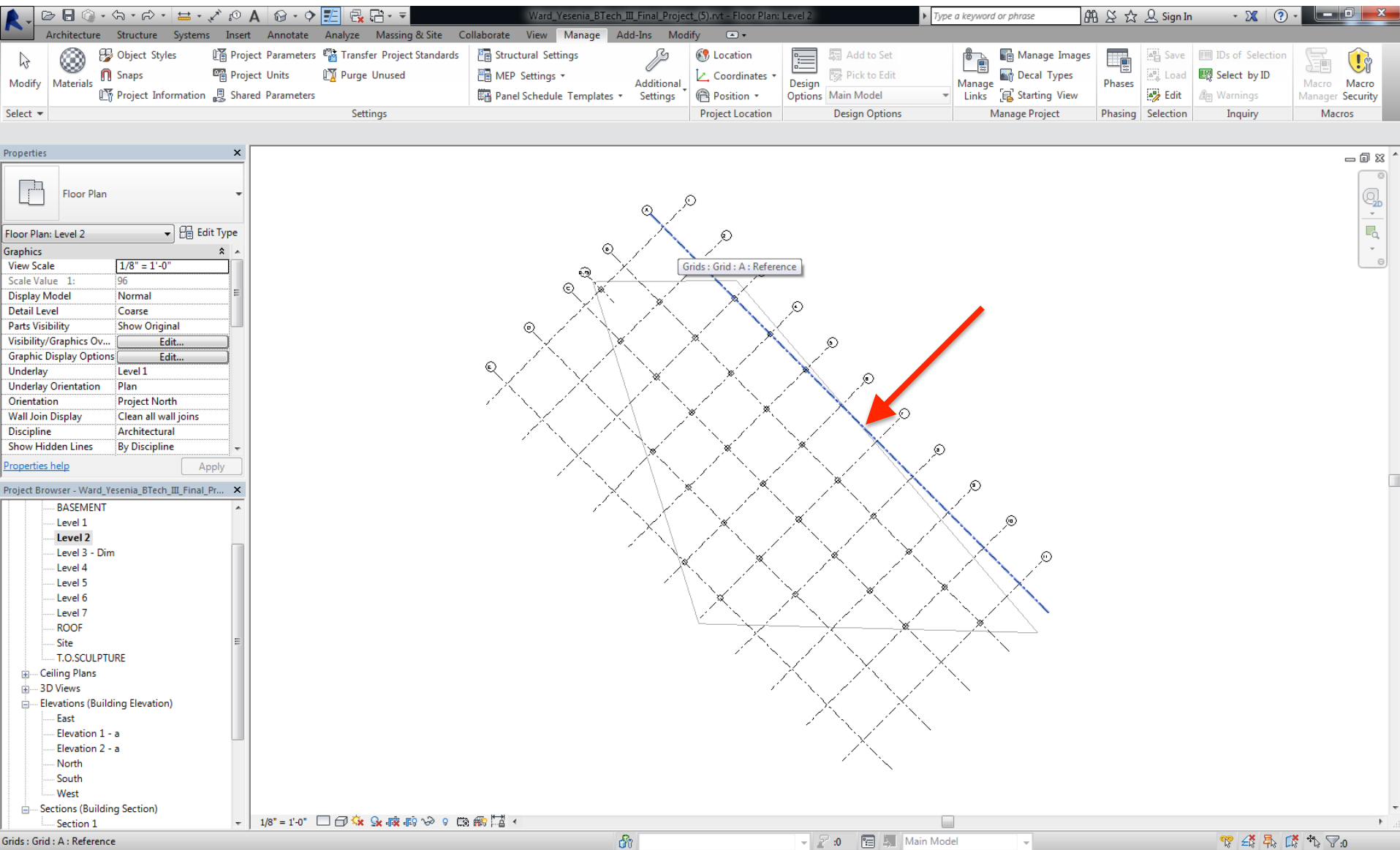
SETTING PROJECT NORTH

Manage > Project Location > Position > Rotate Project North > Select “Align Selected line or plane”



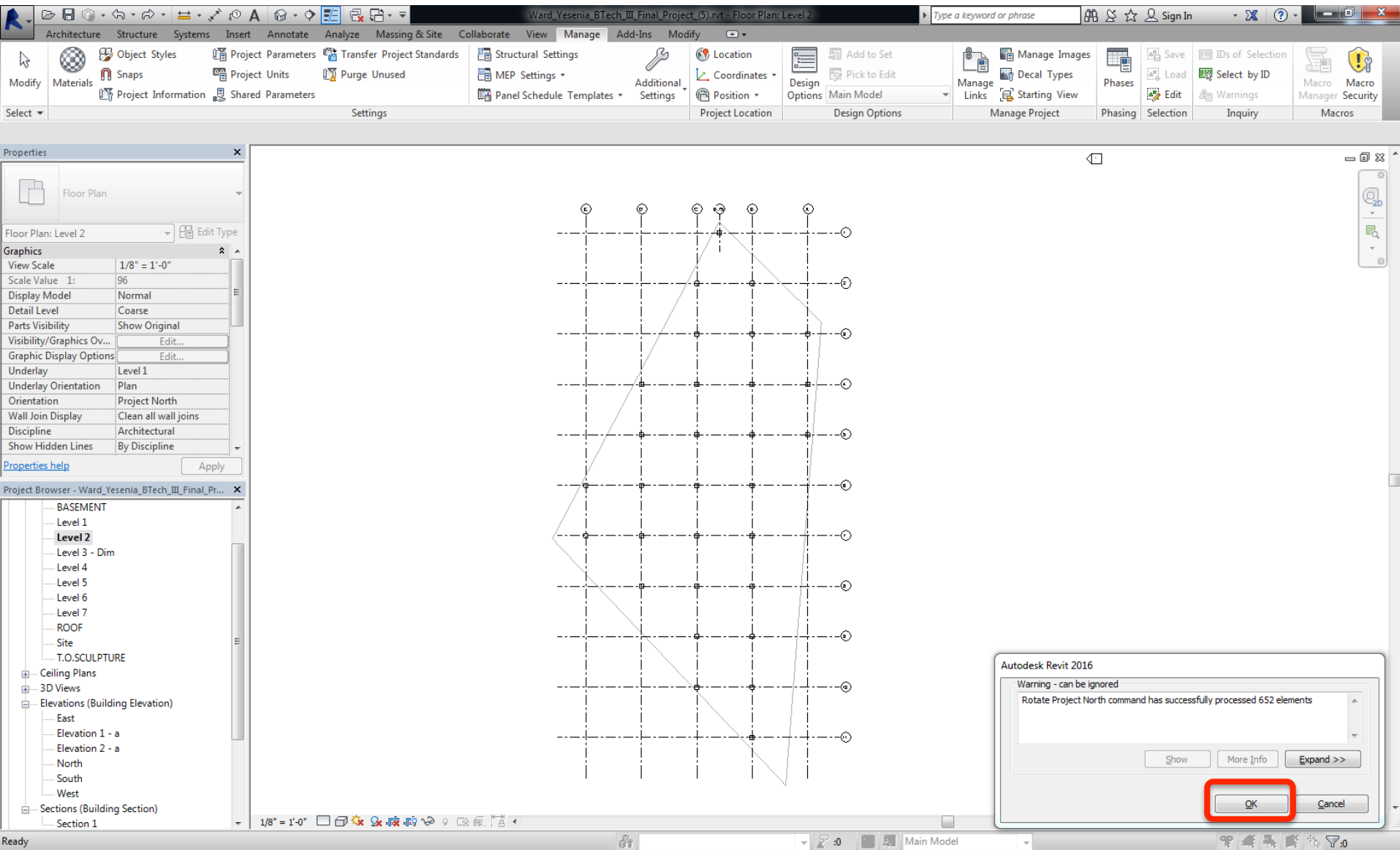
SETTING PROJECT NORTH

Select any orthogonal grid line for the project



SETTING PROJECT NORTH

Project north rotated – Click “Ok” to accept



ROTATING PROJECT NORTH TO FIT TO SHEET : HORIZONTAL ORIENTATION

Manage > Project Location > Position > Rotate Project North > Select “90-deg counterclockwise”

The screenshot shows the Revit software interface. The 'Position' menu is open, showing options: 'Relocate Project', 'Rotate True North', 'Mirror Project', and 'Rotate Project North'. The 'Rotate Project North' option is selected. A dialog box titled 'Rotate Project' is open, displaying the following text:

Rotates all model elements, model views, and annotations in non-drafting views. Which angle of rotation do you want to use?

The dialog box lists four options:

- 90° clockwise
- 90° counterclockwise (highlighted with a red rectangle)
- 180°
- Align selected line or plane
Align the selected line/plane to North/South or East/West, whichever is closest.

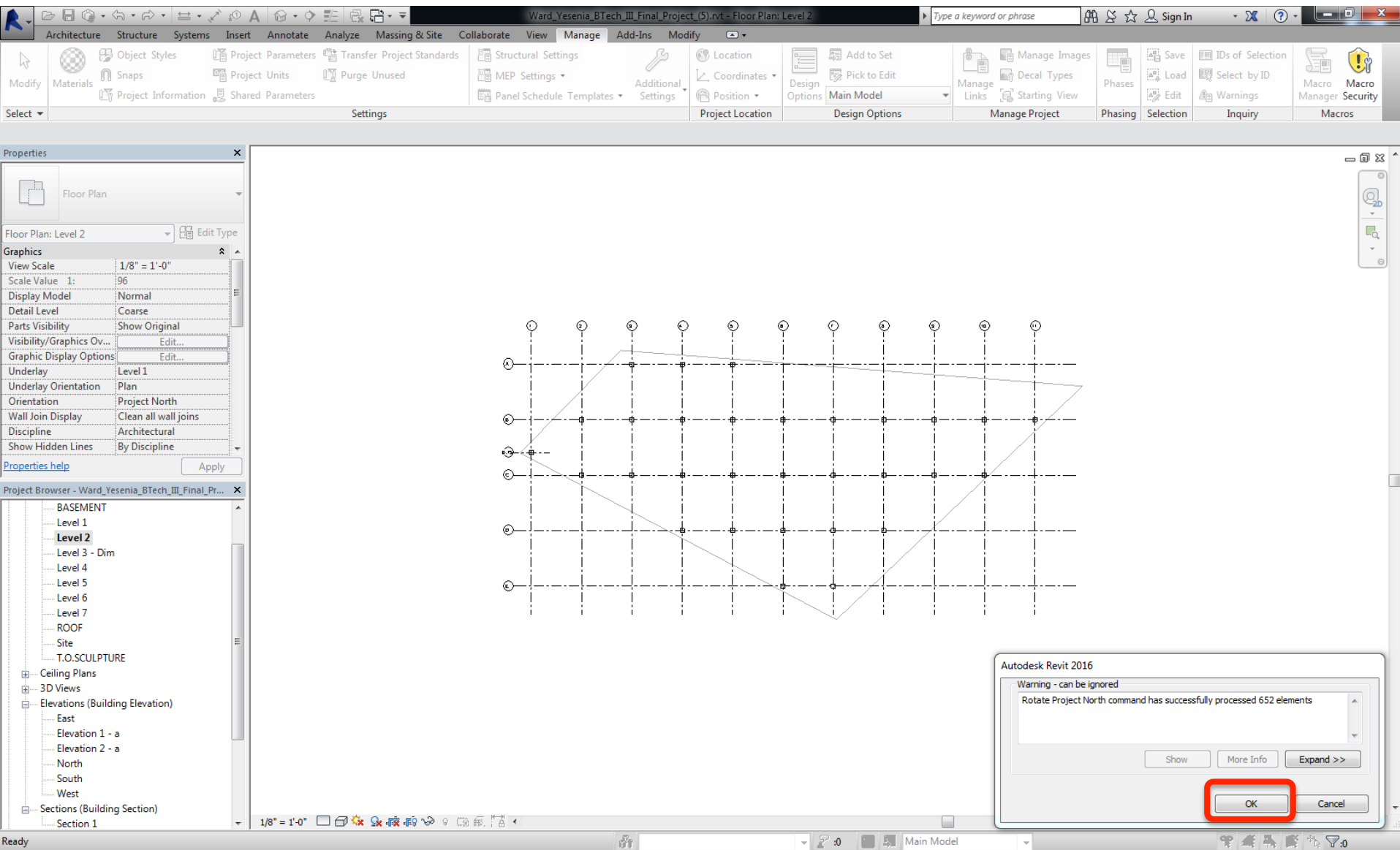
At the bottom of the dialog box, there is a 'Show details' button and a 'Cancel' button. A link 'Click here to learn more' is also present.

On the right side of the dialog box, there is a 'Rotate Project North' panel with two diagrams illustrating the rotation of a building footprint. The top diagram shows the footprint rotated 90 degrees clockwise, and the bottom diagram shows it rotated 90 degrees counterclockwise. The text below the diagrams reads: 'Changes the relationship of all elements relative to Project North (the top of the drawing area) in plan views. Model elements and detail elements rotate the specified angle in the drawing area. The view's Orientation property must be set to Project North.' Below this text is a 'Press F1 for more help' button.

The background shows the Revit interface with the 'Properties' panel on the left, the 'Project Browser' on the bottom left, and the 'Main Model' view on the right. The 'Project Browser' shows a list of levels: BASEMENT, Level 1, Level 2 (selected), Level 3 - Dim, Level 4, Level 5, Level 6, Level 7, ROOF, Site, T.O.S.CULPTURE, and various sections and elevations.

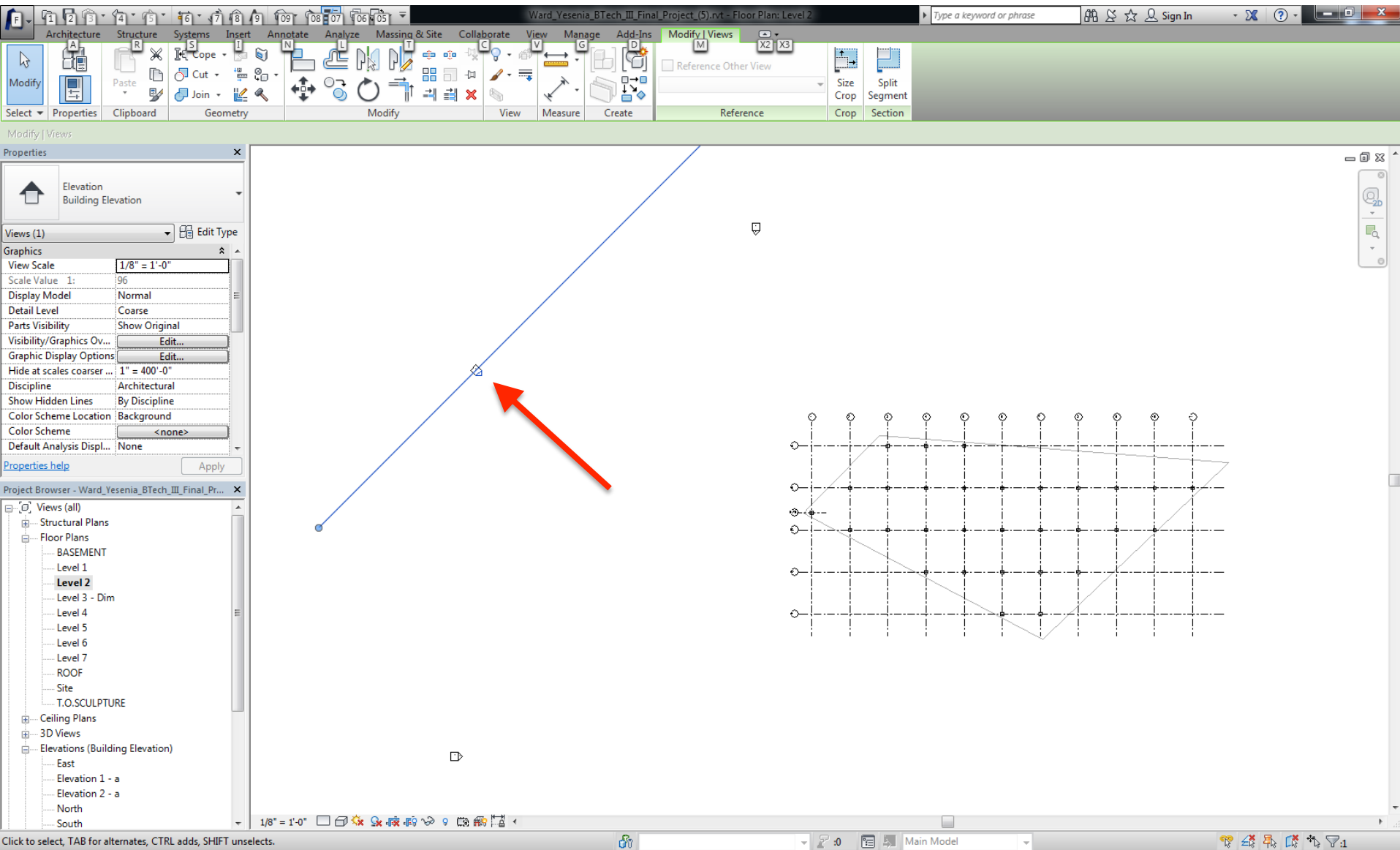
ROTATING PROJECT NORTH TO FIT TO SHEET : HORIZONTAL ORIENTATION

Project north rotated – Click “Ok” to accept



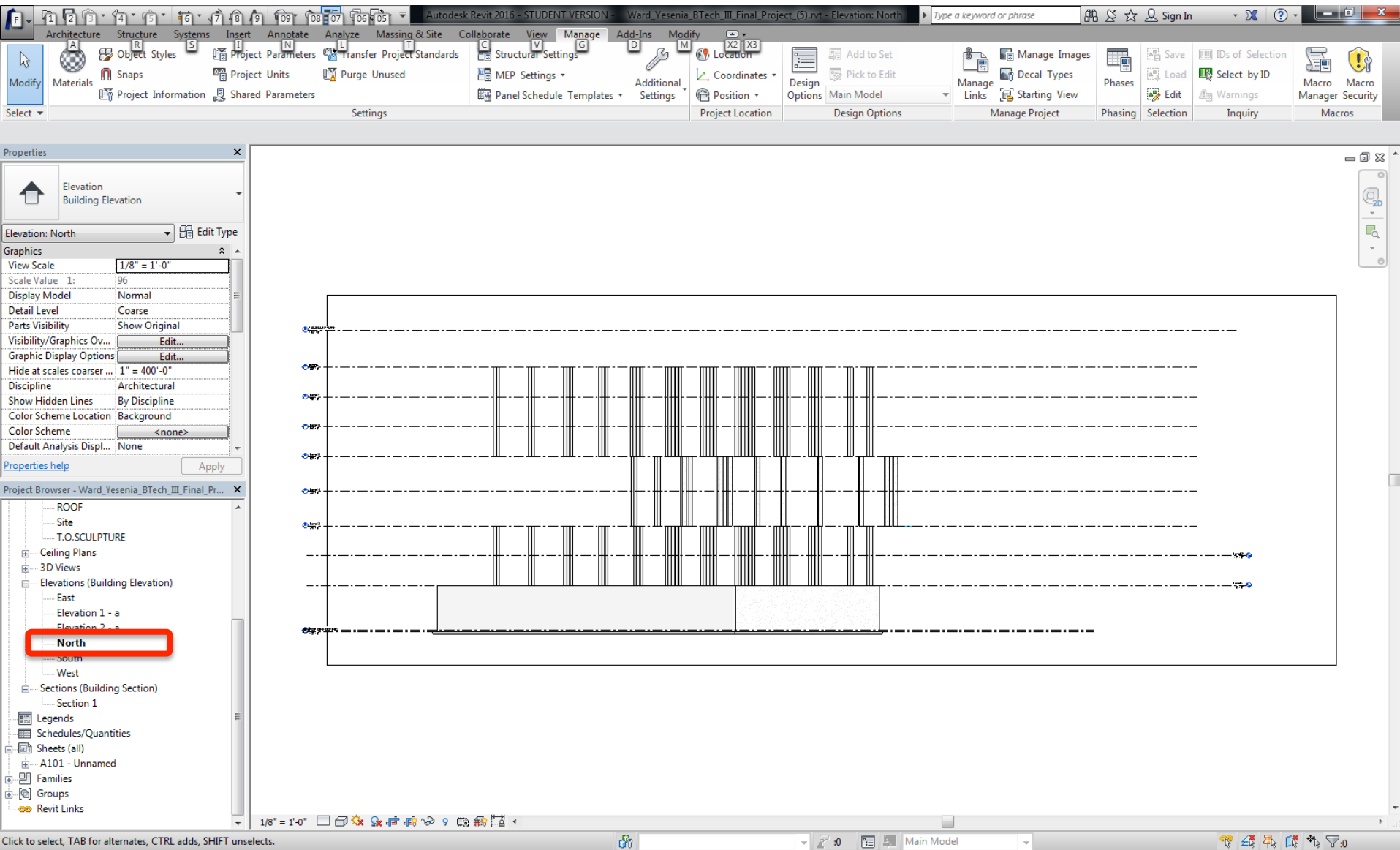
CHECK PROJECT NORTH VS. TRUE NORTH

Click on previous north elevation



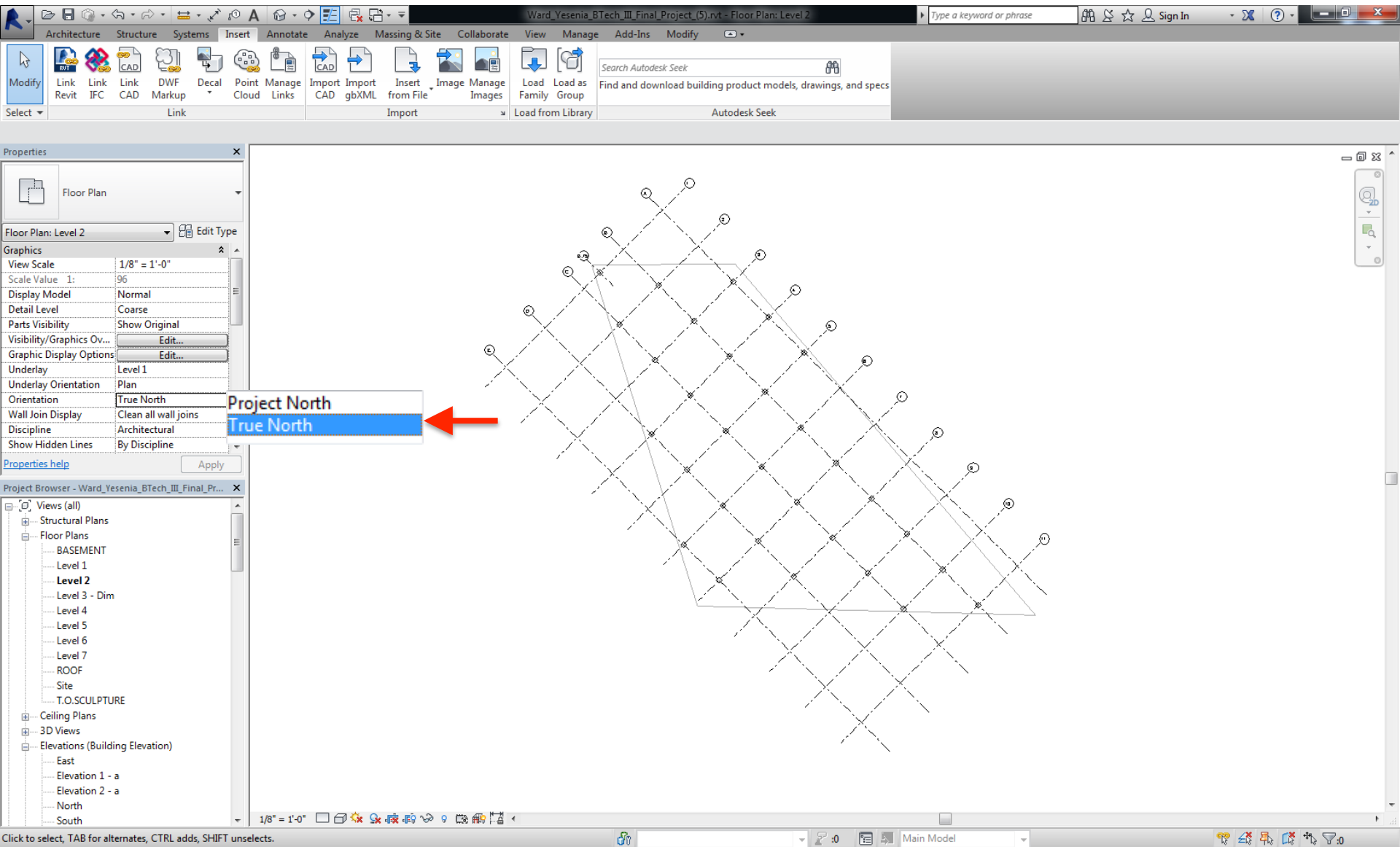
CHECK PROJECT NORTH VS. TRUE NORTH

Still called “North” elevation as per the true north – Project north successfully rotated!



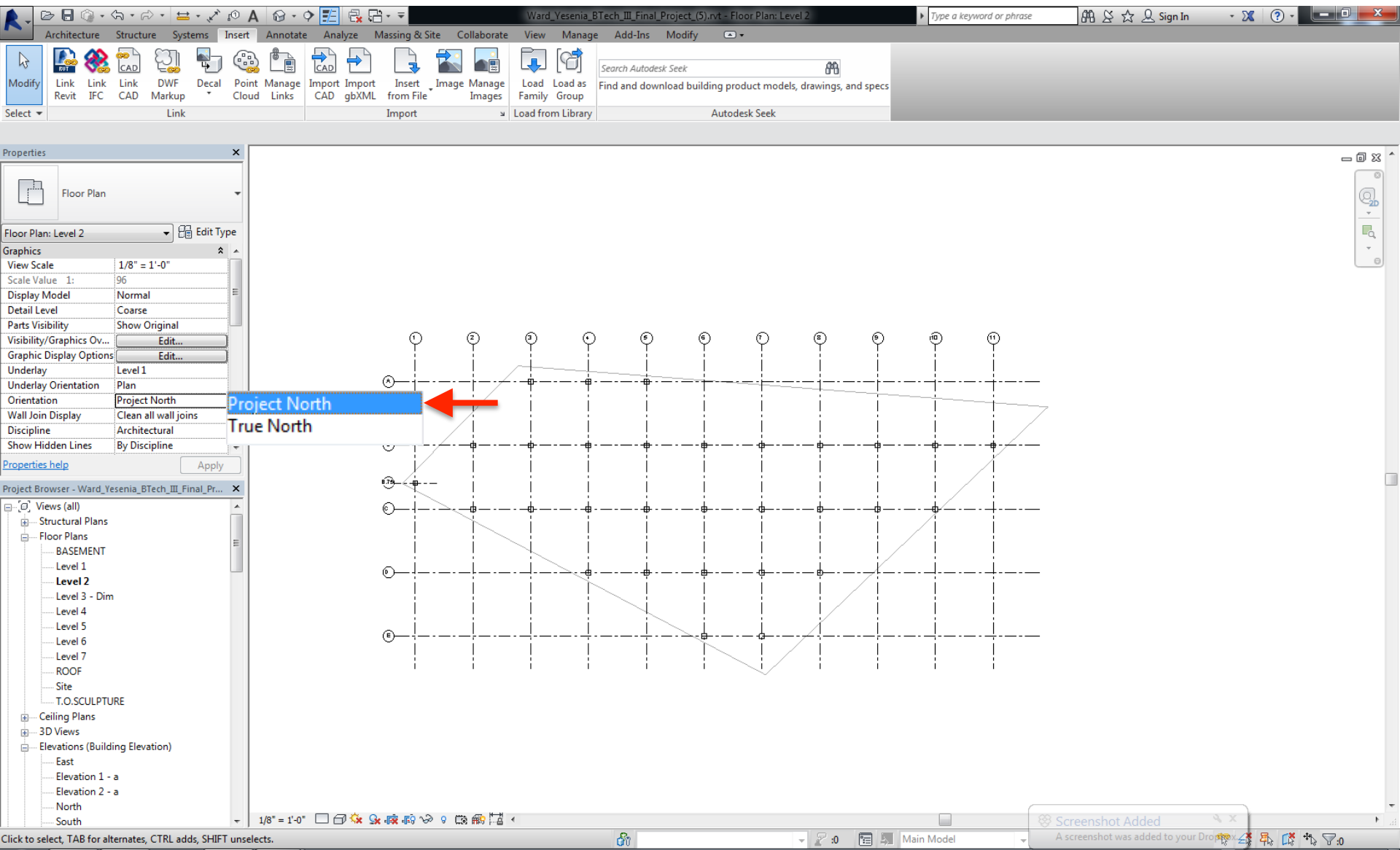
TOGGLE BETWEEN PROJECT NORTH VS. TRUE NORTH

Properties > Orientation > True North



TOGGLE BETWEEN PROJECT NORTH VS. TRUE NORTH

Properties > Orientation > Project North



PLACE PROJECT NORTH PLAN IN DRAWING SHEET

Horizontal orientation fits well in the sheet.

The screenshot displays the AutoCAD software interface. The top ribbon shows various tabs including Architecture, Structure, Systems, Insert, Annotate, Analyze, Massing & Site, Collaborate, View, Manage, Add-Ins, and Modify. The View tab is active, showing options like 3D View, Section, Callout, Plan Views, Elevation, and Drafting View. The Properties panel on the left shows the 'Sheet' properties, including 'Sheet: Unnamed', 'Edit Type', 'Graphics', 'Visibility/Graphics Ovr...', 'Scale' (1/8" = 1'-0"), and 'Identity Data'. The Project Browser on the left shows a tree view of the project, including 'Views (all)', 'Structural Plans', 'Floor Plans', 'BASEMENT', 'Level 1', 'Level 2', 'Level 3 - Dim', 'Level 4', 'Level 5', 'Level 6', 'Level 7', 'ROOF', 'Site', 'T.O.SCULPTURE', 'Ceiling Plans', '3D Views', and 'Elevations (Building Elevation)'. The main drawing area shows a grid with horizontal lines labeled A through E and vertical lines labeled 1 through 11. A north arrow is placed in the grid, pointing towards the top-left. The right side of the drawing area contains a title block with the Autodesk logo, project name 'Unnamed', and sheet number 'A102'. The status bar at the bottom shows 'Viewports: Viewport: Viewport 1' and 'Main Model'.

Properties

Sheet

Sheet: Unnamed Edit Type

Graphics

Visibility/Graphics Ovr... Edit...

Scale 1/8" = 1'-0"

Identity Data

Dependency Independent

Referencing Sheet

Referencing Detail

Current Revision Issued

Current Revision Issue...

Current Revision Issue...

Current Revision Date

Current Revision Desc...

Current Revision

Approved By Approver

Properties help Apply

Project Browser - Ward_Yesenia_BTech_III_Final_Pr...

Views (all)

Structural Plans

Floor Plans

BASEMENT

Level 1

Level 2

Level 3 - Dim

Level 4

Level 5

Level 6

Level 7

ROOF

Site

T.O.SCULPTURE

Ceiling Plans

3D Views

Elevations (Building Elevation)

East

Elevation 1 - a

Elevation 2 - a

North

South

Viewports: Viewport: Viewport 1

Main Model