



Building Technology III

New York City College of Technology

Day 05

Partition Types

Professor Paul C. King, RA, AIA, ARA
Pking@CityTech.Cuny.Edu
Prof.Paul.King@Gmail.com

<http://professorpaulking.wordpress.com/>

<http://students.autodesk.com/>

- **Sample Sheet**

- **Construction Details : GWB**

- 7 1/4"
- 4 7/8"
- 4 1/4"
- 6 1/8" (2 hr)
- Shaft (1 hr)
- Chase (1 hr)

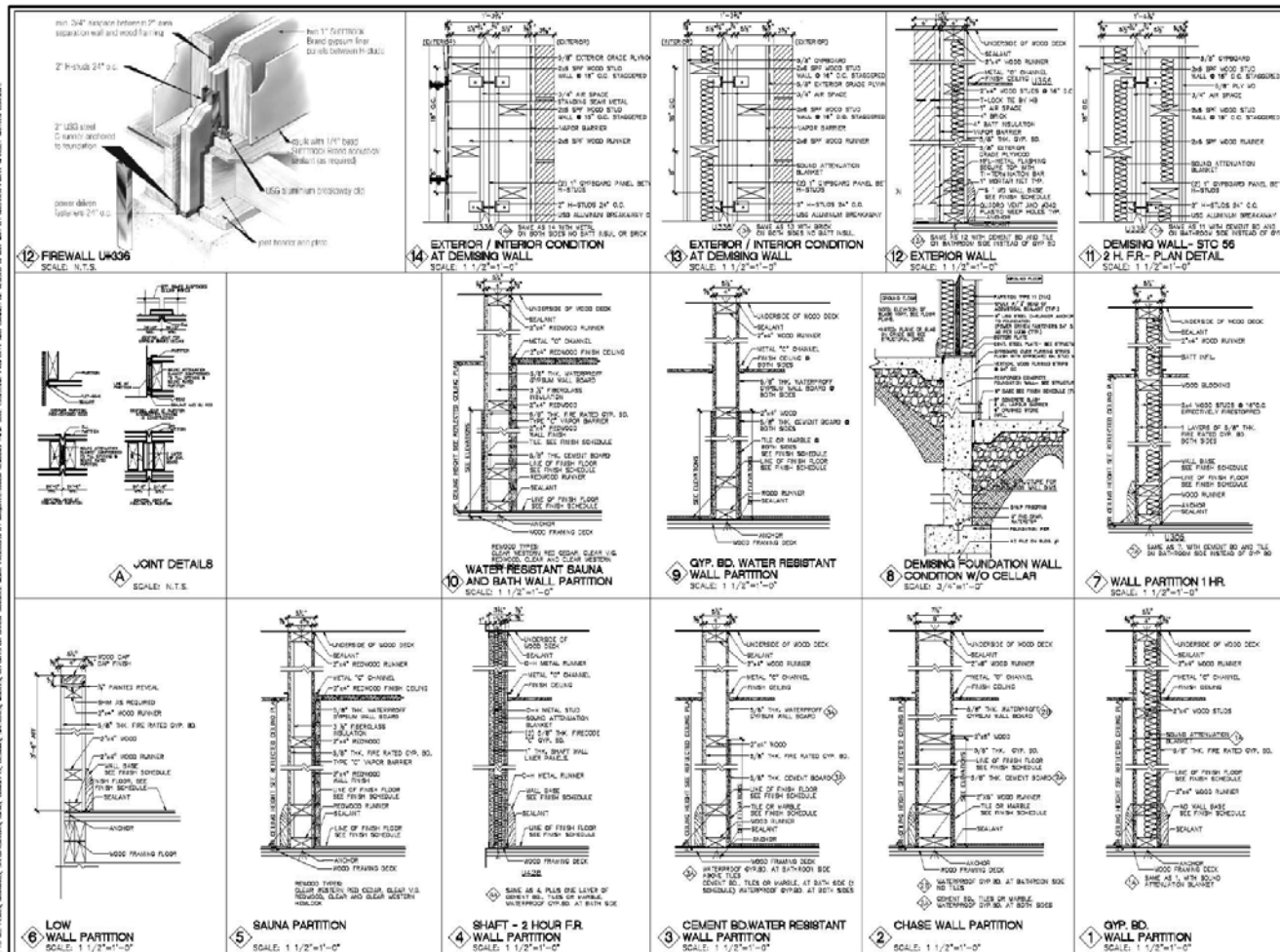
- **Construction Details : CMU**

- 4" Nominal
- 8" Nominal
- 4" Furring
- 8" Furring
- 8" Furring on 2 sides

■ CMU Ratings

- Assignment
- USG Selector
- Exercises

- **Wrap Up**

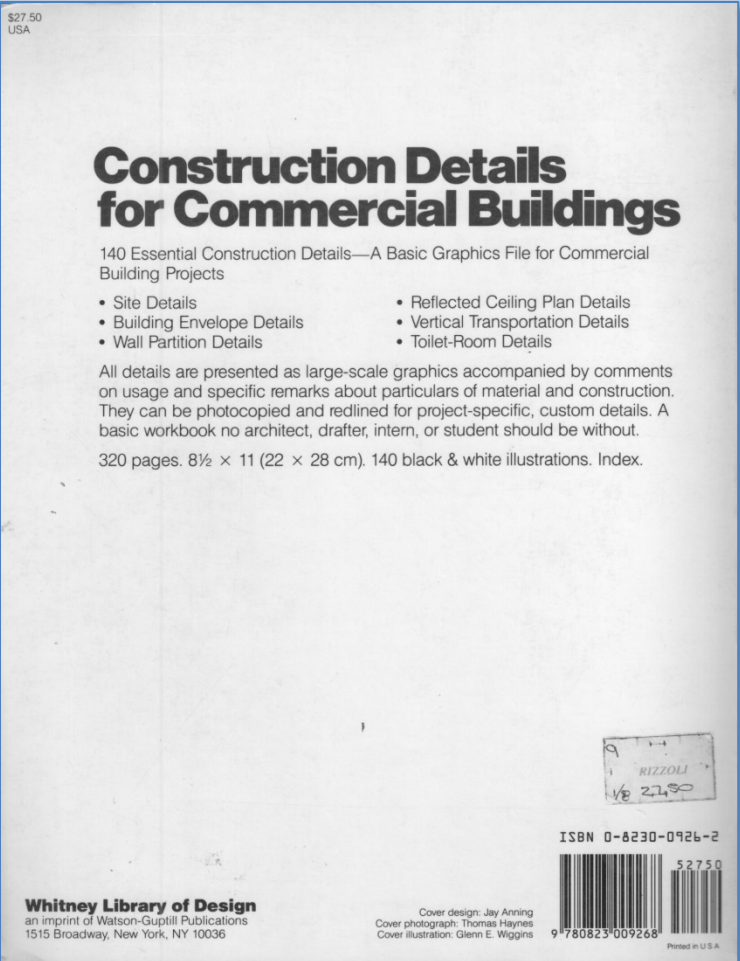
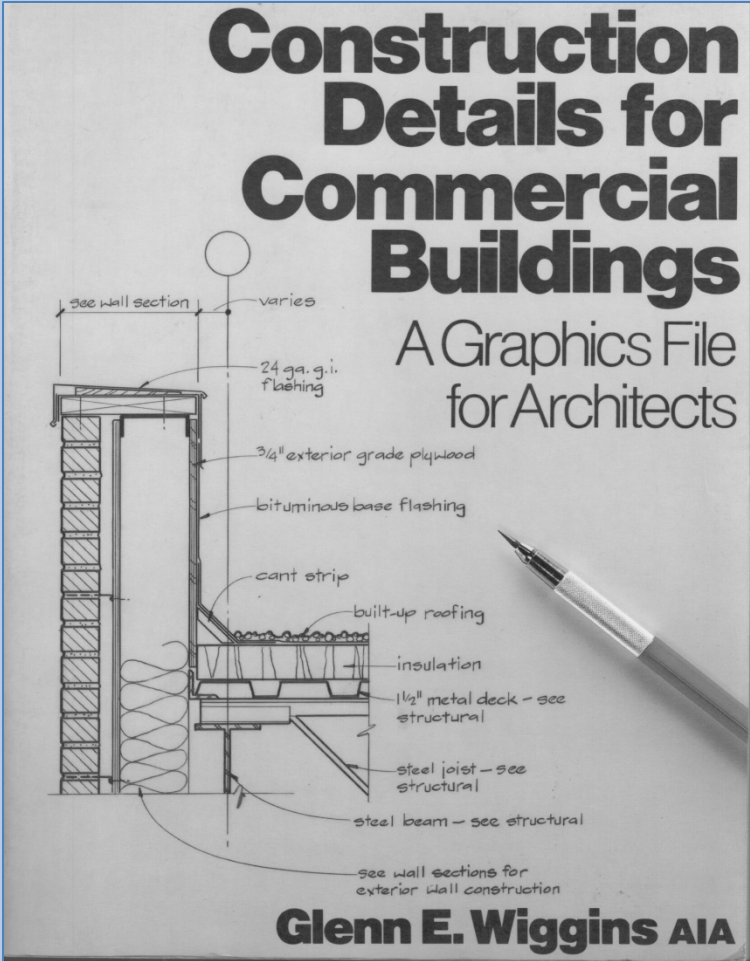


Partition Types

- Sample Sheet
- Construction Details : GWB
 - 7 1/4"
 - 4 7/8"
 - 4 1/4"
 - 6 1/8" (2 hr)
 - Shaft (1 hr)
 - Chase (1 hr)
- Construction Details : CMU
 - 4" Nominal
 - 8" Nominal
 - 4" Furring
 - 8" Furring
 - 8" Furring on 2 sides
- CMU Ratings
- Assignment
- USG Selector
- Exercises
-
- Wrap Up

Partition Types

Construction Details for Commercial Buildings



Partition Types

Sample Sheet

Construction Details : GWB

- 7 1/4"
- 4 7/8"
- 4 1/4"
- 6 1/8" (2 hr)
- Shaft (1 hr)
- Chase (1 hr)

Construction Details : CMU

- 4" Nominal
- 8" Nominal
- 4" Furring
- 8" Furring
- 8" Furring on 2 sides

CMU Ratings

- Assignment
- USG Selector
- Exercises
-

Wrap Up

1 LAYER 5/8" GWB ON EACH SIDE OF
6" METAL STUD FRAME

Partition Types

7 1/4" Partition 6" Stud (non-rated)

Detail 4-1

**Standard Gypsum Board Partition—
with 6" Metal Studs**

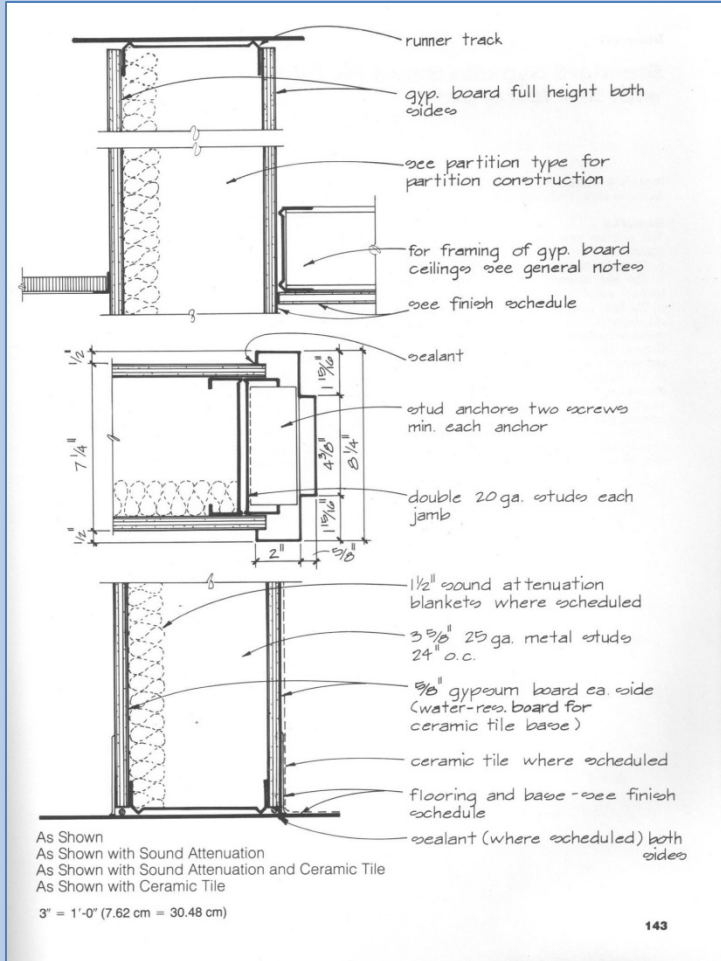
Possible Uses
As shown where 6" (15.24 cm) metal studs form the frame.

Remarks
This partition type detail incorporates four different conditions into a single graphic:

- a. The basic assembly, noted "As Shown."
- b. The basic assembly treated for acoustical purposes with sound-attenuation blankets, noted "As Shown with Sound Attenuation."
- c. The basic assembly treated both with sound-attenuation blankets, for acoustical purposes, and with ceramic tile, for conditions where mild to moderate moisture conditions might exist. Noted "As Shown with Sound Attenuation and Ceramic Tile," this partition is typical in toilet rooms that have tile on the walls and require acoustical separation from adjoining spaces.
- d. The basic assembly with ceramic tile on the walls, but without the sound attenuation. Noted "As Shown with Ceramic Tile," this partition is typical in toilet rooms that have tile on the walls but do not require acoustical separation from adjoining spaces.

A fifth condition would be to revise the gypsum board note to read, "Type X Gypsum Board," thereby creating a one-hour fire-rated partition. The variations using sound attenuation and tile could then be applied to the fire-rated partition.

- As Shown
- As Shown with Sound Attenuation
- As Shown with Sound Attenuation & Ceramic Tile
- As Shown with Ceramic Tile



Partition Types

Sample Sheet

Construction Details : GWB

- 7 1/4"
- 4 7/8"
- 4 1/4"
- 6 1/8" (2 hr)
- Shaft (1 hr)
- Chase (1 hr)

Construction Details : CMU

- 4" Nominal
- 8" Nominal
- 4" Furring
- 8" Furring
- 8" Furring on 2 sides

CMU Ratings

- Assignment
- USG Selector
- Exercises
-

Wrap Up

1 LAYER 5/8" GWB ON EACH SIDE OF
3 5/8" METAL STUD FRAME

Partition Types

4 7/8" Partition 3 5/8" Stud (non-rated)

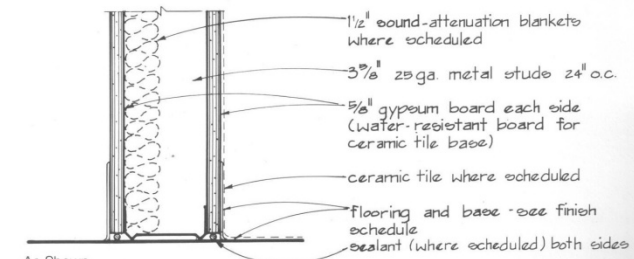
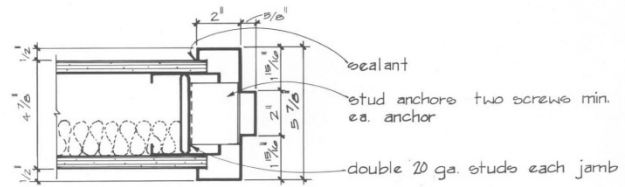
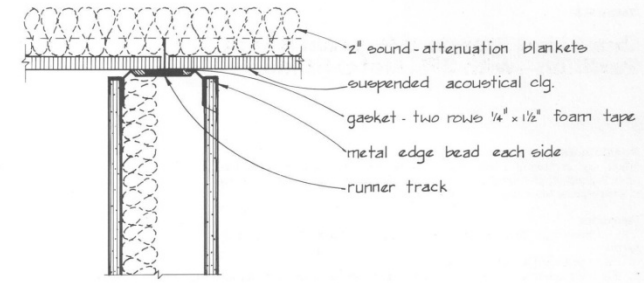
Detail 4-2

Standard Gypsum Board Partition—
with 3 5/8" Metal Studs

Possible Uses
As shown where 3 5/8" metal studs form the frame.

Remarks
This partition type detail incorporates four different conditions into a single graphic:
a. The basic assembly, noted "As Shown."
b. The basic assembly treated for acoustical purposes with sound-attenuation blankets, noted "As Shown with Sound Attenuation."
c. The basic assembly treated both with sound-attenuation blankets, for acoustical purposes, and with ceramic tile, for conditions where mild to moderate moisture conditions might exist. Noted "As Shown with Sound Attenuation and Ceramic Tile," this partition is typical in toilet rooms that have tile on the walls and require acoustical separation from adjoining spaces.
d. The basic assembly with ceramic tile on the walls, but without the sound attenuation. Noted "As Shown with Ceramic Tile," this partition is typical in toilet rooms that have tile on the walls but do not require acoustical separation from adjoining spaces.
A fifth condition would be to revise the gypsum board note to read, "Type X Gypsum Board," thereby creating a one-hour fire-rated partition. The variations using sound attenuation and tile could then be applied to the fire-rated partition.

- As Shown
- As Shown with Sound Attenuation
- As Shown with Sound Attenuation & Ceramic Tile
- As Shown with Ceramic Tile



As Shown
As Shown with Sound Attenuation
As Shown with Sound Attenuation and Ceramic Tile
As Shown with Ceramic Tile
3" = 1'-0" (7.62 cm = 30.48 cm)

Partition Types

Sample Sheet

Construction Details : GWB

- 7 1/4"
- 4 7/8"
- 4 1/4"
- 6 1/8" (2 hr)
- Shaft (1 hr)
- Chase (1 hr)

Construction Details : CMU

- 4" Nominal
- 8" Nominal
- 4" Furring
- 8" Furring
- 8" Furring on 2 sides

CMU Ratings

- Assignment
- USG Selector
- Exercises
-

Wrap Up

1 LAYER 5/8" GWB ON ONE SIDE OF
3 5/8" METAL STUD FRAME

Partition Types

4 1/4" Partition 3 5/8" Stud (non-rated)

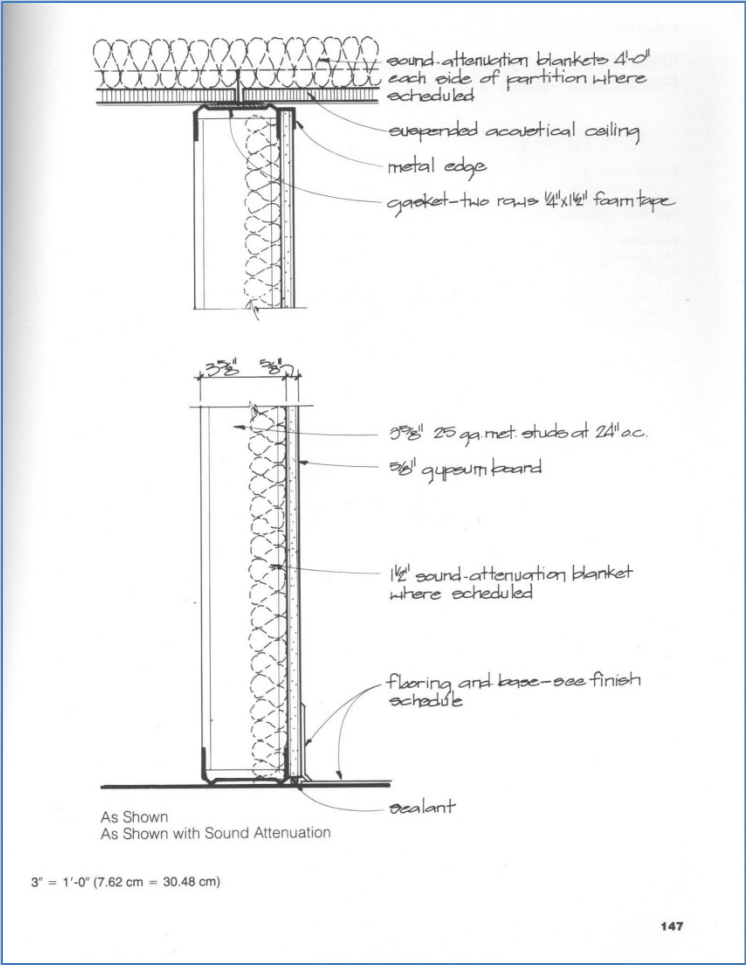
Detail 4-3

One-Sided Standard Gypsum Board Partition—with 3 5/8" Metal Studs

Possible Uses
When only one side of a wall needs to be finished, such as in an uninhabited space, an unfinished storage room, or an unfinished area that will be completed at a later date when it is occupied by a tenant.

Remarks
This partition type detail incorporates two different conditions into a single graphic:
a. The basic assembly, noted "As Shown."
b. The basic assembly treated for acoustical purposes with sound-attenuation blankets, noted "As Shown with Sound Attenuation."

- As Shown
- As Shown with Sound Attenuation



Partition Types

- Sample Sheet
- Construction Details : GWB
 - 7 1/4"
 - 4 7/8"
 - 4 1/4"
 - 6 1/8" (2 hr)
 - Shaft (1 hr)
 - Chase (1 hr)
- Construction Details : CMU
 - 4" Nominal
 - 8" Nominal
 - 4" Furring
 - 8" Furring
 - 8" Furring on 2 sides
- CMU Ratings
- Assignment
- USG Selector
- Exercises
- • • • •
- Wrap Up

2 LAYERS 5/8" "TYPE X" GWB ON
EACH SIDE OF 3 5/8" METAL STUD FRAME

6 1/8" Partition 3 5/8" Stud (2 HR rated)

Partition Types

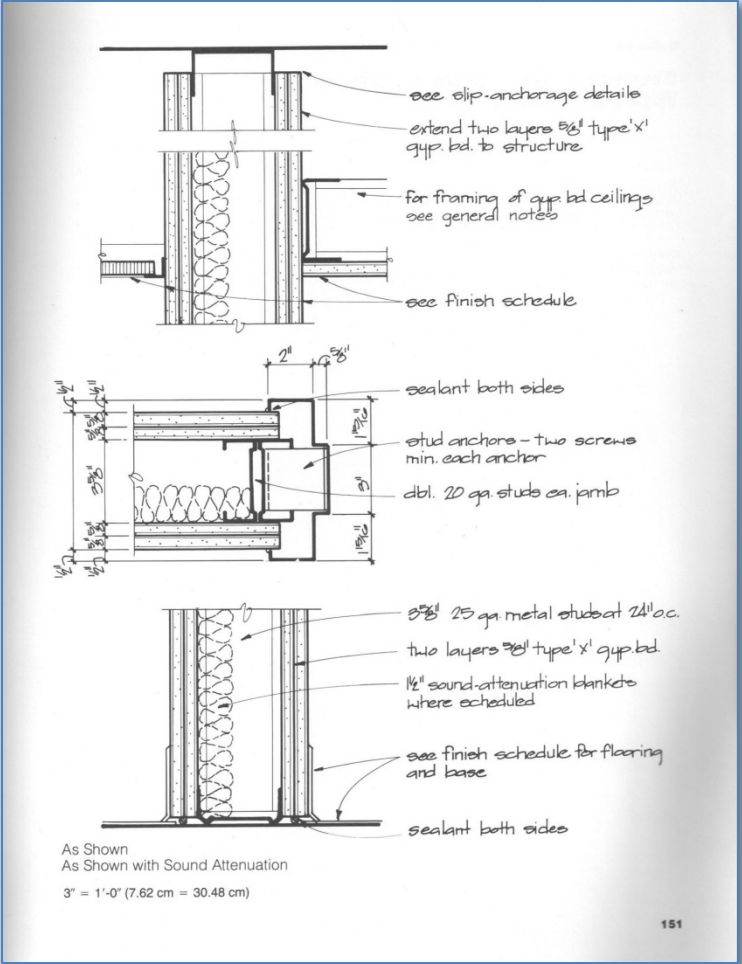
Detail 4-5

Fire-Rated Gypsum Board Partition

Possible Uses
Where a two-hour fire rating is needed and gypsum board is the desired wall material.

Remarks
This partition type detail incorporates two different conditions into a single graphic:
a. The basic assembly, noted "As Shown."
b. The basic assembly treated for acoustical purposes with sound-attenuation blankets, noted "As Shown with Sound Attenuation."

- As Shown
- As Shown with Sound Attenuation



Partition Types

Sample Sheet

Construction Details : GWB

- 7 1/4"
- 4 7/8"
- 4 1/4"
- 6 1/8" (2 hr)
- **Shaft (1 hr)**
- Chase (1 hr)

Construction Details : CMU

- 4" Nominal
- 8" Nominal
- 4" Furring
- 8" Furring
- 8" Furring on 2 sides

CMU Ratings

- Assignment
- USG Selector
- Exercises
-

Wrap Up

1" GWB SHAFT WALL LINER and 1 LAYER 5/8 SHAFT WALL FACEBOARD with 2 1/2" C-H STUD FRAME

3 1/8" Shaft Partition 2 1/2" C-H Stud (1 HR rated)

Detail 4-6

Standard Gypsum Board Shaft Wall Partition

Possible Uses

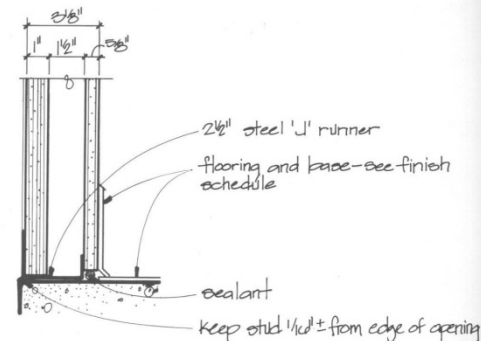
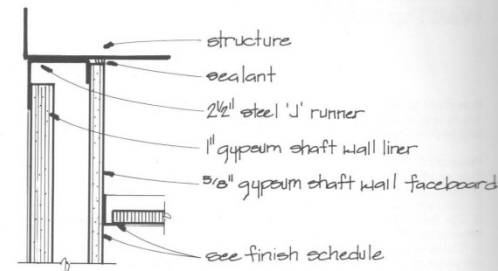
At shafts where it is necessary to have gypsum board on both sides of the partition, but it is not possible to work from the shaft side to install the gypsum board.

Remarks

This detail allows both sides of the partition gypsum board to be installed from one side.

- **As Shown**
- **For use at Elevators Shaft, Mechanical Shafts or Stairs Enclosures**
- **Allows for installation from one side**

Partition Types



3" = 1'-0" (7.62 cm = 30.48 cm)

Partition Types

Sample Sheet

Construction Details : GWB

- 7 1/4"
- 4 7/8"
- 4 1/4"
- 6 1/8" (2 hr)
- Shaft (1 hr)
- Chase (1 hr)

Construction Details : CMU

- 4" Nominal
- 8" Nominal
- 4" Furring
- 8" Furring
- 8" Furring on 2 sides

CMU Ratings

- Assignment
- USG Selector
- Exercises
-

Wrap Up

1 LAYERS 5/8" GWB ON
EACH SIDE OF 1 5/8" METAL STUD FRAME

Width Varies Chase Partition 1 5/8" Stud (1 HR rated)

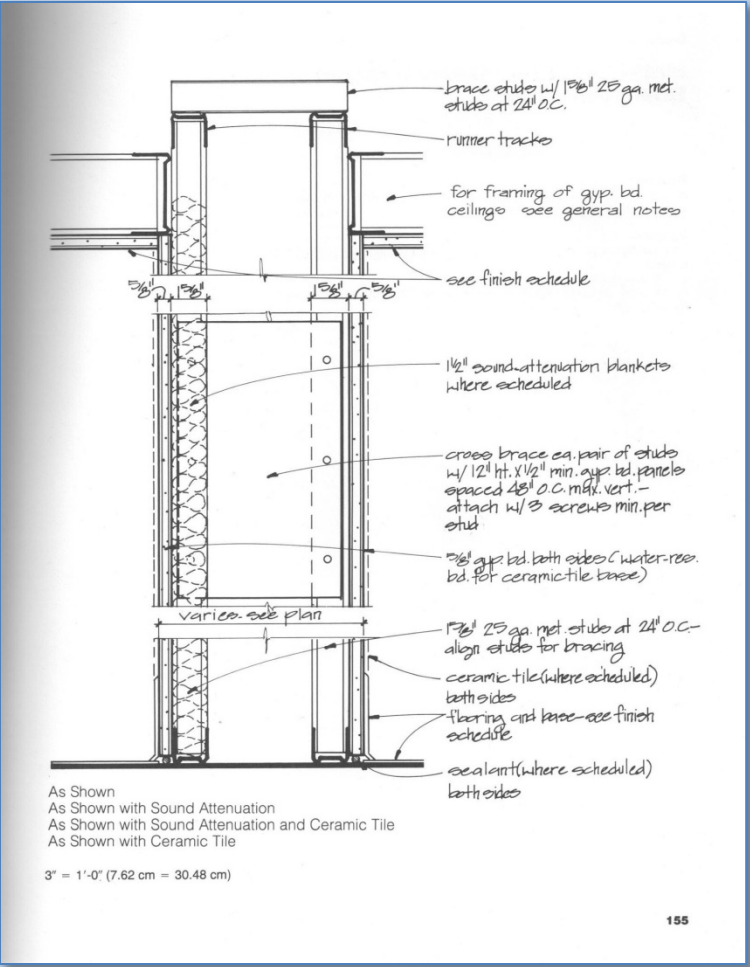
Detail 4-7

Standard Gypsum Board Chase Wall Partition

Possible Uses
Where it is necessary to have a large amount of space within the partition wall, such as at mechanical lines or toilet rooms.

Remarks
This partition type detail incorporates four different conditions into a single graphic:
a. The basic assembly, noted "As Shown."
b. The basic assembly treated for acoustical purposes with sound-attenuation blankets, noted "As Shown with Sound Attenuation."
c. The basic assembly treated both with sound-attenuation blankets, for acoustical purposes, and with ceramic tile, for conditions where mild to moderate moisture conditions might exist. Noted "As Shown with Sound Attenuation and Ceramic Tile," this partition is typical in toilet rooms that have tile on the walls and require acoustical separation from adjoining spaces.
d. The basic assembly with ceramic tile on the walls, but without the sound attenuation. Noted "As Shown with Ceramic Tile," this partition is typical in toilet rooms that have tile on the walls but do not require acoustical separation from adjoining spaces.

- As Shown
- As Shown with Sound Attenuation
- As Shown with Sound Attenuation & Ceramic Tile
- As Shown with Ceramic Tile



Partition Types

Sample Sheet

Construction
Details : GWB

- 7 1/4"
- 4 7/8"
- 4 1/4"
- 6 1/8" (2 hr)
- Shaft (1 hr)
- Chase (1 hr)

Construction
Details : CMU

- 4" Nominal
- 8" Nominal
- 4" Furring
- 8" Furring
- 8" Furring on 2 sides

CMU Ratings

- Assignment
- USG Selector
- Exercises
-

Wrap Up

8" Nominal (6 5/8" Actual)
Concrete Masonry Unit (CMU)

8" Nominal Concrete Block Wall (rated)

Partition Types

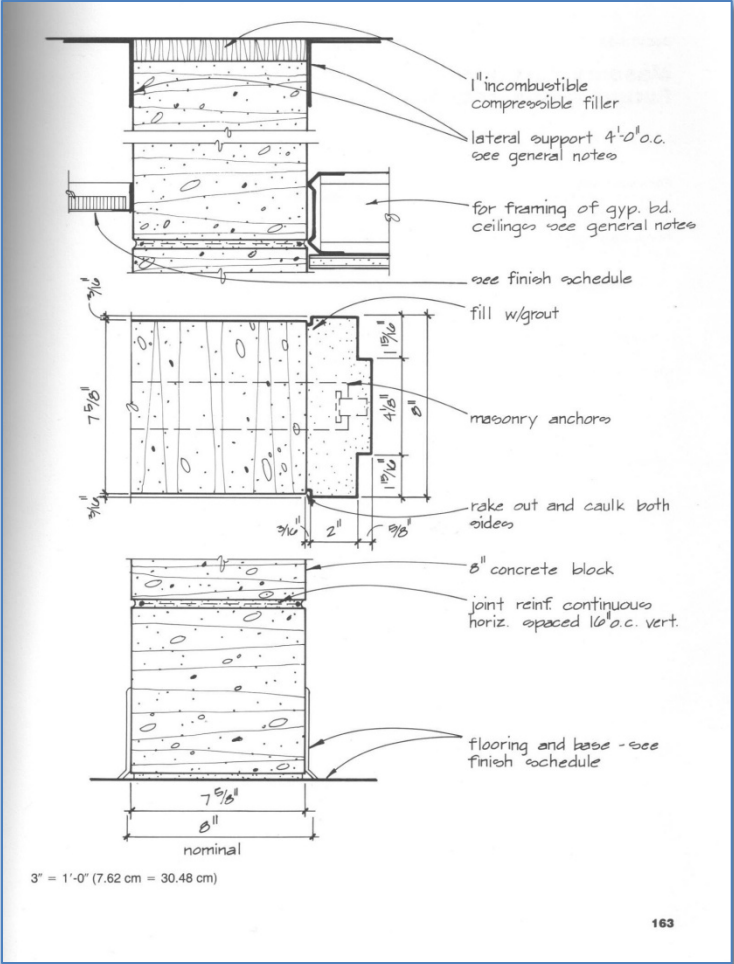
Detail 4-11

**Masonry Partition—
8" Concrete Block**

Possible Uses
At service areas, shafts, or high-abuse areas.

Remarks
This detail can provide a two-hour fire rating, but it must be noted on the drawing if desired. The project specification must describe the specifics of the assembly.

- As Shown
- Block walls are to be coursed out both in plan and elevation / section



Partition Types

Sample Sheet

Construction Details : GWB

- 7 1/4"
- 4 7/8"
- 4 1/4"
- 6 1/8" (2 hr)
- Shaft (1 hr)
- Chase (1 hr)

Construction Details : CMU

- 4" Nominal
- 8" Nominal
- 4" Furring
- 8" Furring
- 8" Furring on 2 sides

CMU Ratings

- Assignment
- USG Selector
- Exercises
-

Wrap Up

4" Nominal (3 5/8" Actual) W/ 1 LAYER 5/8" GWB on
7/8" FURRING STRIPS ONE SIDE

4" Nominal Concrete Block Wall with Furring (Rated)

Detail 4-12

Masonry Partition— Furred 4" Concrete Block

Possible Uses

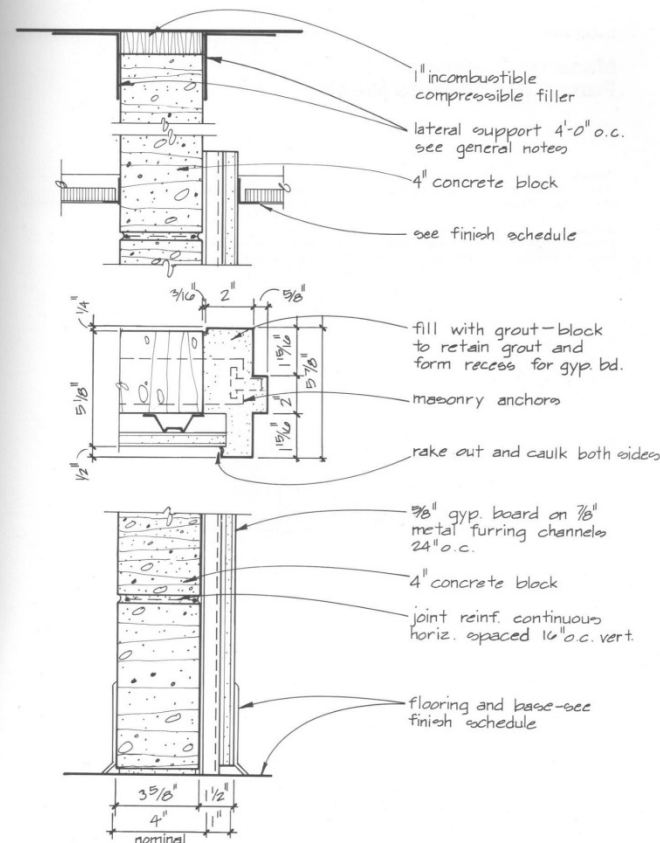
Provides benefits of concrete block partition on one side, while presenting a nicer finish on the other side.

Remarks

None.

- As Shown
- Block walls are to be coursed out both in plan and elevation / section

Partition Types



3" = 1'-0" (7.62 cm = 30.48 cm)

Partition Types

▪ Sample Sheet

▪ Construction
Details : GWB

- 7 1/4"
- 4 7/8"
- 4 1/4"
- 6 1/8" (2 hr)
- Shaft (1 hr)
- Chase (1 hr)

▪ Construction
Details : CMU

- 4" Nominal
- 8" Nominal
- 4" Furring
- 8" Furring
- 8" Furring on 2 sides

▪ CMU Ratings

- Assignment
- USG Selector
- Exercises
-

▪ Wrap Up

8" Nominal (7 5/8" Actual) W/ 1 LAYER 5/8" GWB on
7/8" FURRING STRIPS ONE SIDE

8" Nominal Concrete Block Wall with Furring (Rated)

Detail 4-13

Masonry Partition— Furred 8" Concrete Block

Possible Uses

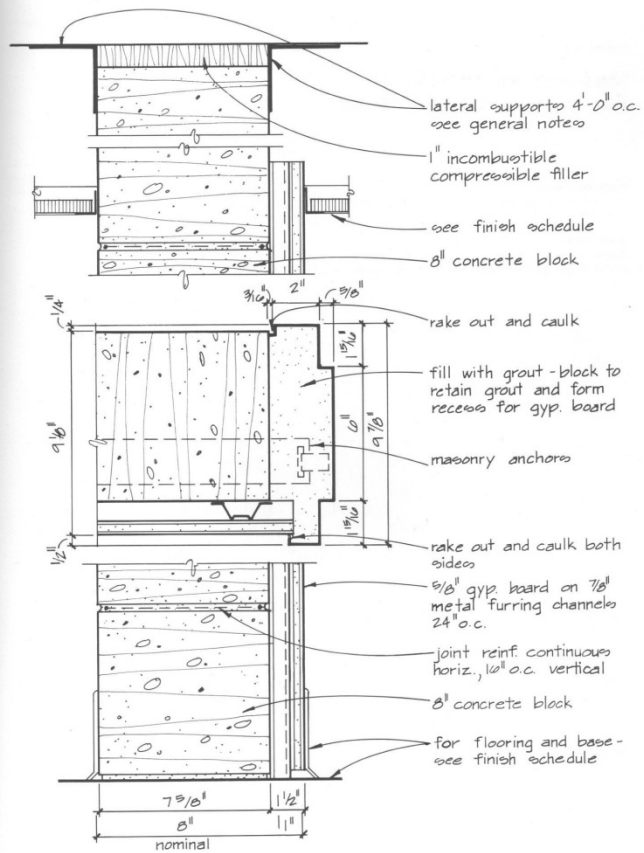
Provides benefits of concrete block partition on one side, while presenting a nicer finish on the other side.

Remarks

This detail can provide a two-hour fire rating, but it must be noted on the drawing if desired. The project specification must describe the specifics of the assembly.

- As Shown
- Block walls are to be coursed out both in plan and elevation / section

Partition Types



3" = 1'-0" (7.62 cm = 30.48 cm)

Partition Types

Sample Sheet

Construction Details : GWB

- 7 1/4"
- 4 7/8"
- 4 1/4"
- 6 1/8" (2 hr)
- Shaft (1 hr)
- Chase (1 hr)

Construction Details : CMU

- 4" Nominal
- 8" Nominal
- 4" Furring
- 8" Furring
- 8" Furring on 2 sides

CMU Ratings

- Assignment
- USG Selector
- Exercises
-

Wrap Up

BTECH 3

New York City College
of Technology

8" Nominal (7 5/8" Actual) W/ 1 LAYER 5/8" GWB on
7/8" FURRING STRIPS EACH SIDE

8" Nominal Concrete Block Wall with Furring (Rated)

Detail 4-14

Masonry Partition— Furred 8" Concrete Block

Possible Uses

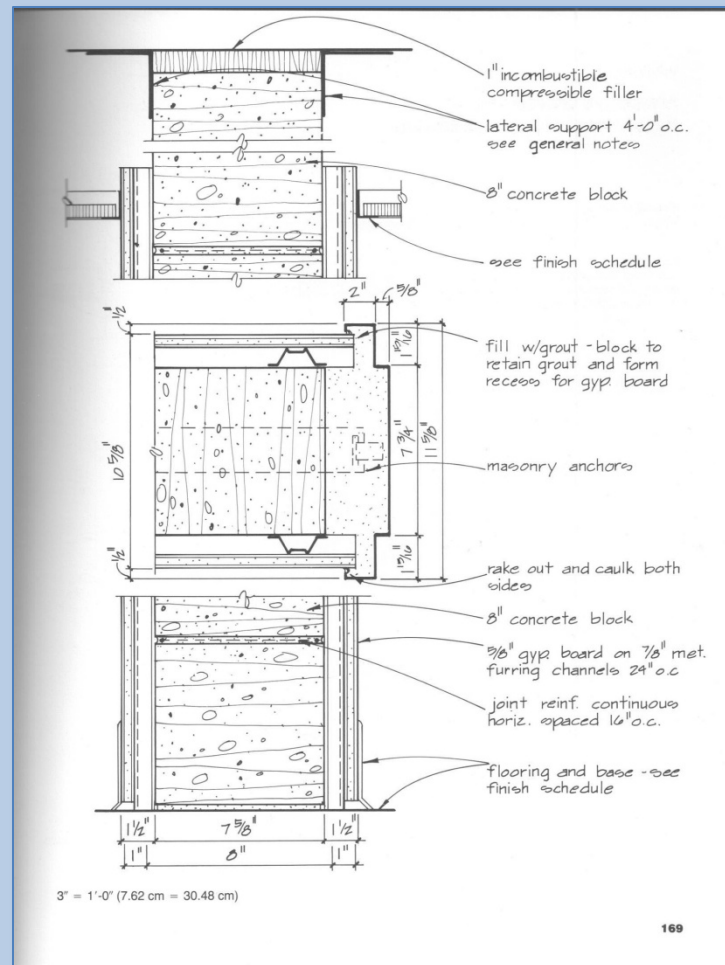
Provides benefits of concrete block partition, while presenting a nicer finish on each side of the block.

Remarks

This detail can provide a two-hour fire rating, but it must be noted on the drawing if desired. The project specification must describe the specifics of the assembly.

- As Shown
- Block walls are to be coursed out both in plan and elevation / section
- With Furring on both sides coursing is not mandatory

Partition Types



Partition Types

- Sample Sheet
- Construction Details : GWB
 - 7 ¼"
 - 4 7/8"
 - 4 ¼"
 - 6 1/8" (2 hr)
 - Shaft (1 hr)
 - Chase (1 hr)
- Construction Details : CMU
 - 4" Nominal
 - 8" Nominal
 - 4" Furring
 - 8" Furring
 - 8" Furring on 2 sides
- CMU Ratings
- Assignment
- USG Selector
- Exercises
- • • • •
- Wrap Up

<http://www.ncma.org/etek/Pages/Manualviewer.aspx?filename=TEK%2007-01C.pdf>

Partition Types

Fire Ratings of Concrete Masonry Assemblies

tion from the original tested wall assembly is allowed, including unit size, shape, mix design, constituent materials, and even the plant of manufacture.

For prescriptive designs, the IBC provides a series of tables that describe equipment of various types and materials that are permitted to be used in concrete masonry walls.

An information series from the national authority on concrete masonry technology

KINGSTON
BLOCK & MASONRY SUPPLY, LLC

NATIONAL CONCRETE MASONRY ASSOCIATION
Sustainable Concrete Products for Structures and Handicrafts

FIRE RESISTANCE RATINGS OF CONCRETE MASONRY ASSEMBLIES

TEK 7-1C
Fire Resistance (2009)

INTRODUCTION

METHODS OF DETERMINING FIRE RESISTANCE RATINGS

walls. Fire testing of wall assemblies is conducted in accordance with the *Standard Test Methods for Fire Tests of Building Construction and Materials*, ASTM E119 (ref. 4), which measures four performance criteria, as follows:

- resistance to the transmission of heat through the wall assembly

- Ratings will vary depending upon:
 - the width of the material
 - the percentage of solid
 - the composition
 - the assembly

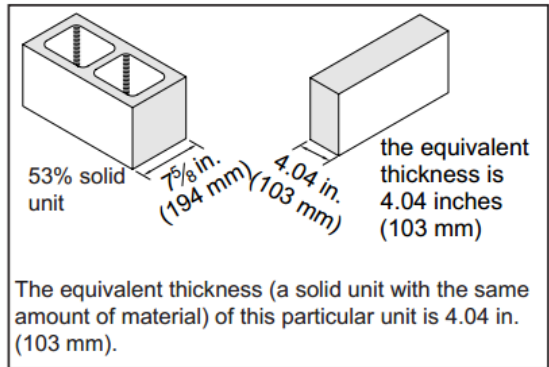


Figure 1—Equivalent Thickness

Table 2—Equivalent Thicknesses of Concrete Masonry Units, in. (mm)

Nominal width, in. (mm)	Based on typical hollow units ^A	Based on percent solid	
		(75%)	(100%)
4 (102)	2.7 (69) [73.8]	2.7 (69)	3.6 (91)
6 (152)	3.1 (79) [55.0]	4.2 (107)	5.6 (142)
8 (203)	4.0 (102) [53.0]	5.7 (145)	7.6 (193)
10 (254)	4.5 (113) [46.3]	7.2 (183)	9.6 (244)
12 (305)	5.1 (129) [44.0]	8.7 (221)	11.6 (295)
14 (356)	5.5 (139) [40.2]	10.2 (259)	13.6 (345)
16 (406)	6.0 (152) [38.4]	11.7 (297)	15.6 (396)

^A Values in brackets [] are percent solid values based on typical two-core concrete masonry units.

certainly preferable to a structural collapse endpoint, characteristic of many other building materials.

Partition Types

▪ Sample Sheet

▪ Construction Details : GWB

- 7 1/4"
- 4 7/8"
- 4 1/4"
- 6 1/8" (2 hr)
- Shaft (1 hr)
- Chase (1 hr)

▪ Construction Details : CMU

- 4" Nominal
- 8" Nominal
- 4" Furring
- 8" Furring
- 8" Furring on 2 sides

▪ CMU Ratings

▪ Assignment

▪ USG Selector

▪ Exercises

.....

▪ Wrap Up

BTECH 3

New York City College
of Technology

Partition Types Assignment



NEW YORK CITY
COLLEGE OF TECHNOLOGY

THE CITY UNIVERSITY OF NEW YORK

DEPARTMENT OF ARCHITECTURAL TECHNOLOGY

ARCH 2330 BUILDING TECHNOLOGY III

Assignment Number/Name: Partition Types

Computer Program(s): AutoCAD, Revit, Web Browser and Blackboard

Student Learning Objectives:

Upon successful completion of this assignment, the student will:

1. Be able to research and develop partition types
2. Construct/draw partition type details.

Student Skills Learning Objectives: (AutoCAD)

Upon successful completion, in addition to skills required by previous lessons the student will:

1. Be able to externally reference files and images
2. Be able to add annotation and dimensions
3. Create & Edit Blocks both architectural and for annotation
4. Use hatching commands
5. Use appropriate line weights and line patterns

Assessment:

To evaluate the student's achievement of the learning objectives, the professor will do the following:

1. Evaluate the student's partition types for accuracy and completeness.
2. Evaluate students ability to research relevant information regarding construction of details.
3. Drawing will be evaluated on its own and as part of the AutoCAD drawing set submission.

Project Description:

Students will research, develop and draw a series of standard partitions types to include the following. For each wall type your drawing must show base condition, top condition and condition at ceiling all in section view and plan view.

1. Gypsum Wall Board & Stud Partitions for 1-hour, 2-hour and 3 hour rating. (3 types).
2. Each of the gypsum wall types must be evaluated to accommodate 12', 14' and 16' floor to floor heights and must also include sub-types with Sound Attenuation Blanket (types as needed)
3. 4" and 8" Nominal Block Interior walls both glazed and unglazed. (2 types)
4. Block walls with furring & with studs with Gypsum wallboard finish on 1 side. (2 types)
5. Shaft & Chase Walls. (2 types)

Process:

1. Research Gypsum wall types on USG website
2. Understand structural capabilities of different metal stud wall frames
3. Develop and draw all details.
4. Develop completed partitions sheet with annotations and dimensions.
5. Post completed sheet as a pdf and as a drawing file by the assigned deadline & add description.

References:

1. USG Design Studio <http://www.usgdesignstudio.com/>
2. USG Wall Selector <http://www.usgdesignstudio.com/wall-selector.asp>

Project Description:

Students will research, develop and draw a series of standard partitions types to include the following. For each wall type your drawing must show base condition, top condition and condition at ceiling all in section view and plan view.

1. Gypsum Wall Board & Stud Partitions for 1-hour, 2-hour and 3 hour rating. (3 types).
2. Each of the gypsum wall types must be evaluated to accommodate 12', 14' and 16' floor to floor heights and must also include sub-types with Sound Attenuation Blanket (types as needed)
3. 4" and 8" Nominal Block Interior walls both glazed and unglazed. (2 types)
4. Block walls with furring & with studs with Gypsum wallboard finish on 1 side. (2 types)
5. Shaft & Chase Walls. (2 types)

Process:

1. Research Gypsum wall types on USG website
2. Understand structural capabilities of different metal stud wall frames
3. Develop and draw all details.
4. Develop completed partitions sheet with annotations and dimensions.
5. Post completed sheet as a pdf and as a drawing file by the assigned deadline & add description.

Partition Types

Sample Sheet

Construction
Details : GWB

- 7 1/4"
- 4 7/8"
- 4 1/4"
- 6 1/8" (2 hr)
- Shaft (1 hr)
- Chase (1 hr)

Construction
Details : CMU

- 4" Nominal
- 8" Nominal
- 4" Furring
- 8" Furring
- 8" Furring on 2 sides

CMU Ratings

Assignment

USG Selector

Exercises

.....

Wrap Up

<http://www.usgdesignstudio.com/wall-selector-overview.asp>
US Gypsum Website Resource: Partition Types

USG

DESIGN STUDIO

System Selector ▾

Ceilings ▾

Sustainability ▾

Details

Submittals/ MSDS

Support ▾

My Dashboard

Home > Wall Selector

Wall Selector

Wall Types

All Wall Types

Area Separation Wall

Chase Walls

Exterior Walls

Furred Masonry

Interior Partitions

Shaft Wall

Literature

USG Area Separation Wall System

USG Acoustical Assemblies Brochure

USG Fire-Resistant Assemblies Brochure

Plaster Systems Brochure - SA

Moisture-Resistant Assemblies Brochure

REVIT Downloads

USG Walls Library for REVIT (2014)

Download USG Walls Library for Revit

Download USG Walls Library for Revit

GA WP-7008 - Fire Resistant Assembly, Fire Rated Assembly, Fire Rated Detail | USG Design Studio - Mozilla Firefox

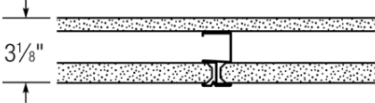
www.usgdesignstudio.com/print-assembly.asp?id=920446&assemblyCategory=921052

USG DESIGN STUDIO

PRINT CLOSE

Home > System Selector > GA WP-7008

Fire Rated System Design - GA WP-7008



REVIT

GA WP-7008

Shaft Wall - Steel Stud (Non-loadbearing)

Fire Rating	STC / Sound Test	System Thickness
1 hour	N/A	3-1/8"

Detail Description

- Gypsum Board - 5/8 in. thick board, applied vertically, attached to studs with 1 in. long, Type S-12 screws, spaced 8 in. OC along the edges and 12 in. OC of the board - SHEETROCK® UltraLight Firecode X Gypsum Panels
- Steel Studs - "C-H" shaped studs, 2-1/2 in. wide by 1-1/2 in. deep, min 25 gauge steel spaced max @ 24 in. - 400CH-34
- Gypsum Board - 1 in. thick by nom. 2 ft. wide gypsum liner panels. Vertical edges inserted in "H" shaped section of "C-H" studs. Free edge of end panels attached to long leg of "J" runners - SHEETROCK® Brand Glass-Mat Gypsum Liner Panel

United States Gypsum Company : 550 W. Adams, Chicago, IL 60661 : www.usgdesignstudio.com

Reference URL: <http://www.usgdesignstudio.com/assembly.asp?id=920446&assemblyCategory=921052>

PRINT CLOSE

Core Gypsum Panels

CODE® Core (Type X)

Core Gypsum Panels

DE® C Core Gypsum Panels

um Panel

ypsum Panel - 5/8"

um Panels

Panels

FIBEROCK Brand Abuse-Resistant VHI Interior Panels

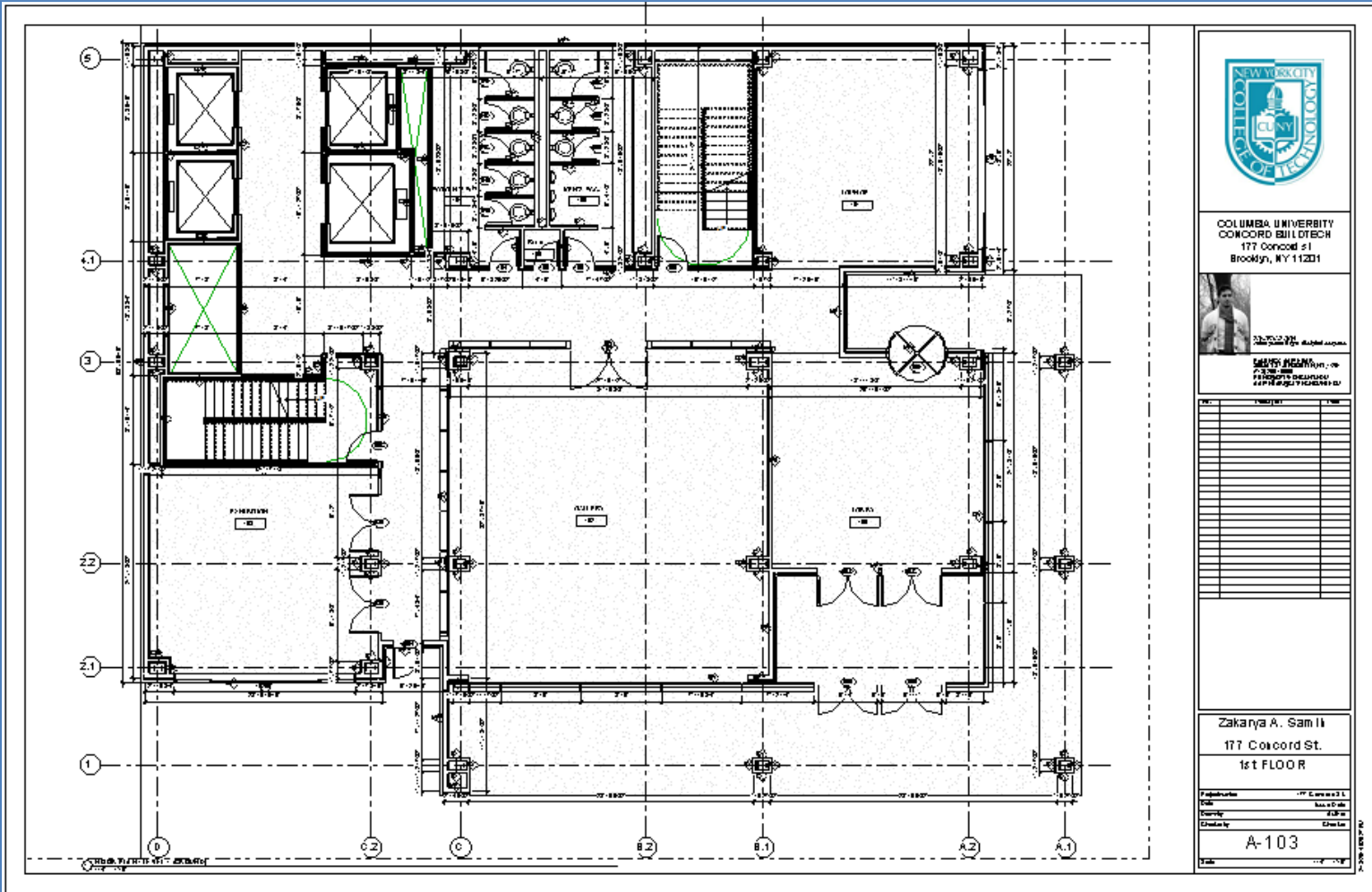
FIBEROCK Brand Aqua-Tough VHI Interior Panels

Work as a Team to Identify Partition Types

Partition Types
Exercise 1.1

Partition Types

- Sample Sheet
- Construction Details : GWB
 - 7 1/4"
 - 4 7/8"
 - 4 1/4"
 - 6 1/8" (2 hr)
 - Shaft (1 hr)
 - Chase (1 hr)
- Construction Details : CMU
 - 4" Nominal
 - 8" Nominal
 - 4" Furring
 - 8" Furring
 - 8" Furring on 2 sides
- CMU Ratings
- Assignment
- USG Selector
- Exercises
 -
- Wrap Up

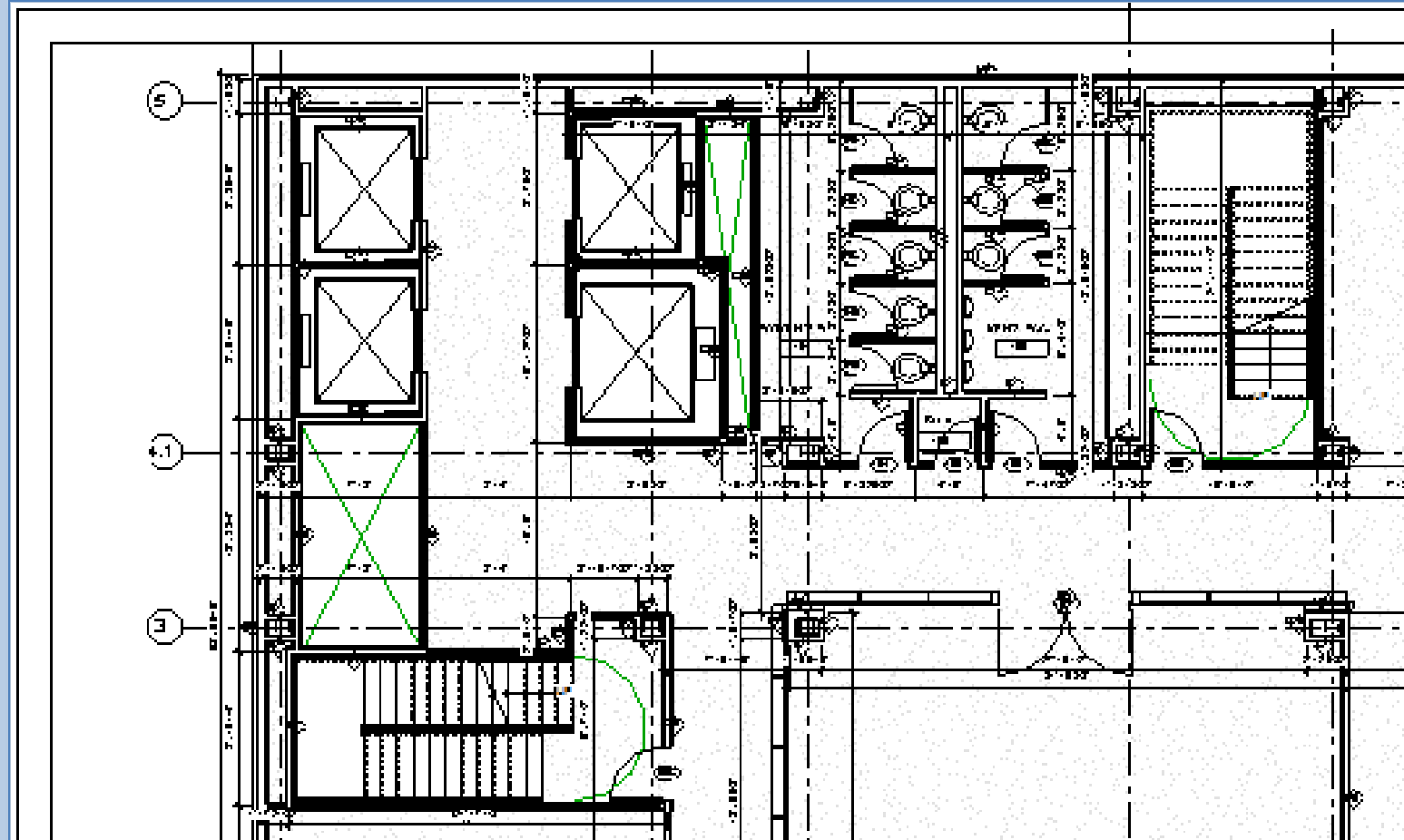


Partition Types

Exercise 1.2

Partition Types

- Sample Sheet
- Construction Details : GWB
 - 7 1/4"
 - 4 7/8"
 - 4 1/4"
 - 6 1/8" (2 hr)
 - Shaft (1 hr)
 - Chase (1 hr)
- Construction Details : CMU
 - 4" Nominal
 - 8" Nominal
 - 4" Furring
 - 8" Furring
 - 8" Furring on 2 sides
- CMU Ratings
- Assignment
- USG Selector
- Exercises
 -
- Wrap Up

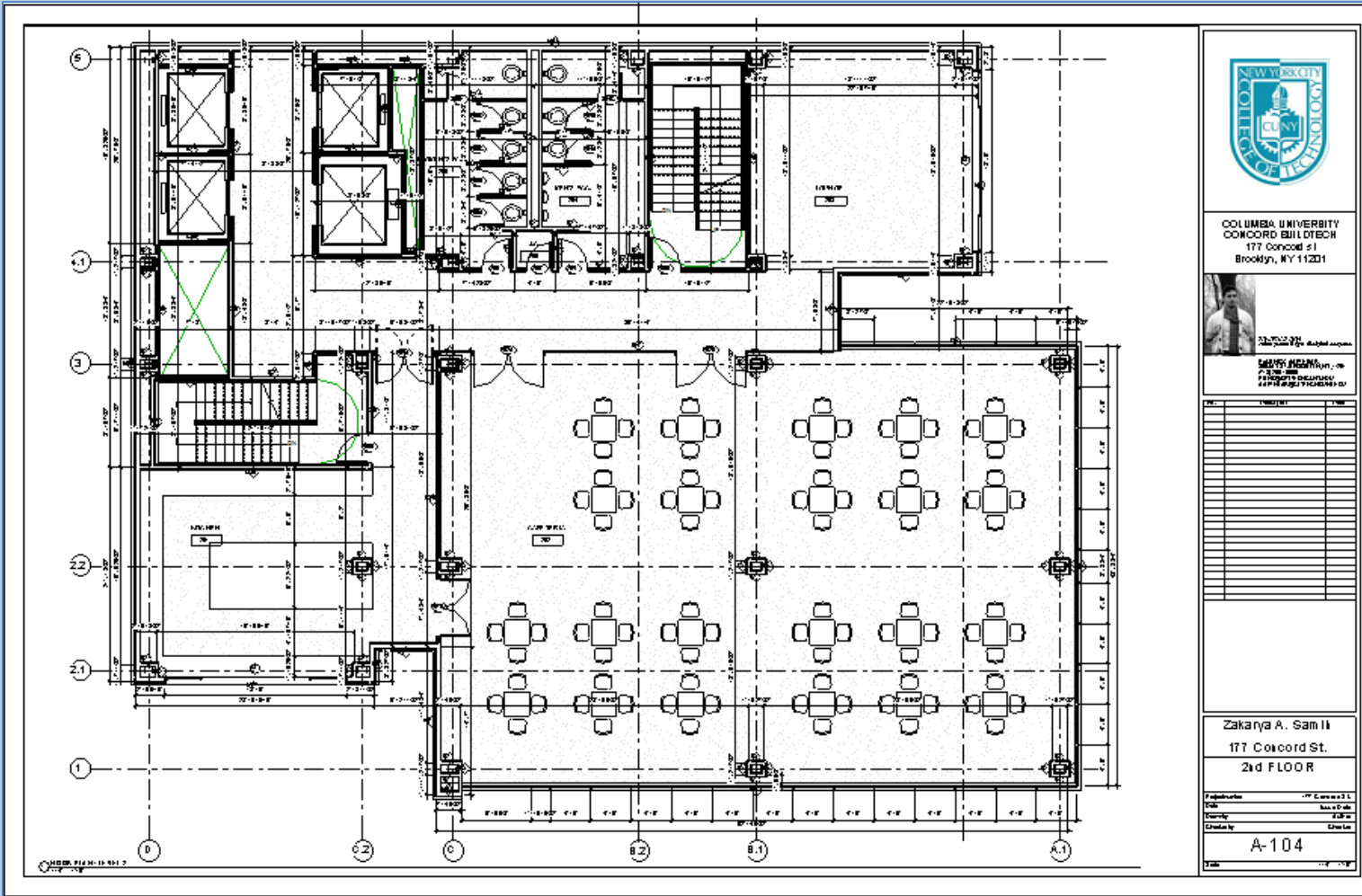


Work as a Team to Identify Partition Types

Partition Types
Exercise 1.3

Partition Types

- Sample Sheet
- Construction Details : GWB
 - 7 1/4"
 - 4 7/8"
 - 4 1/4"
 - 6 1/8" (2 hr)
 - Shaft (1 hr)
 - Chase (1 hr)
- Construction Details : CMU
 - 4" Nominal
 - 8" Nominal
 - 4" Furring
 - 8" Furring
 - 8" Furring on 2 sides
- CMU Ratings
- Assignment
- USG Selector
- Exercises
- Wrap Up



Work as a Team to Identify Partition Types

Partition Types
Exercise 1.4

Partition Types

- Sample Sheet
- Construction Details : GWB
 - 7 1/4"
 - 4 7/8"
 - 4 1/4"
 - 6 1/8" (2 hr)
 - Shaft (1 hr)
 - Chase (1 hr)
- Construction Details : CMU
 - 4" Nominal
 - 8" Nominal
 - 4" Furring
 - 8" Furring
 - 8" Furring on 2 sides
- CMU Ratings
- Assignment
- USG Selector
- Exercises
- Wrap Up

**COLUMBIA UNIVERSITY
CONCORD BUILDTECH**
177 Concord St
Brooklyn, NY 11201

Zakarya A. Samli
177 Concord St.
3rd FLOOR

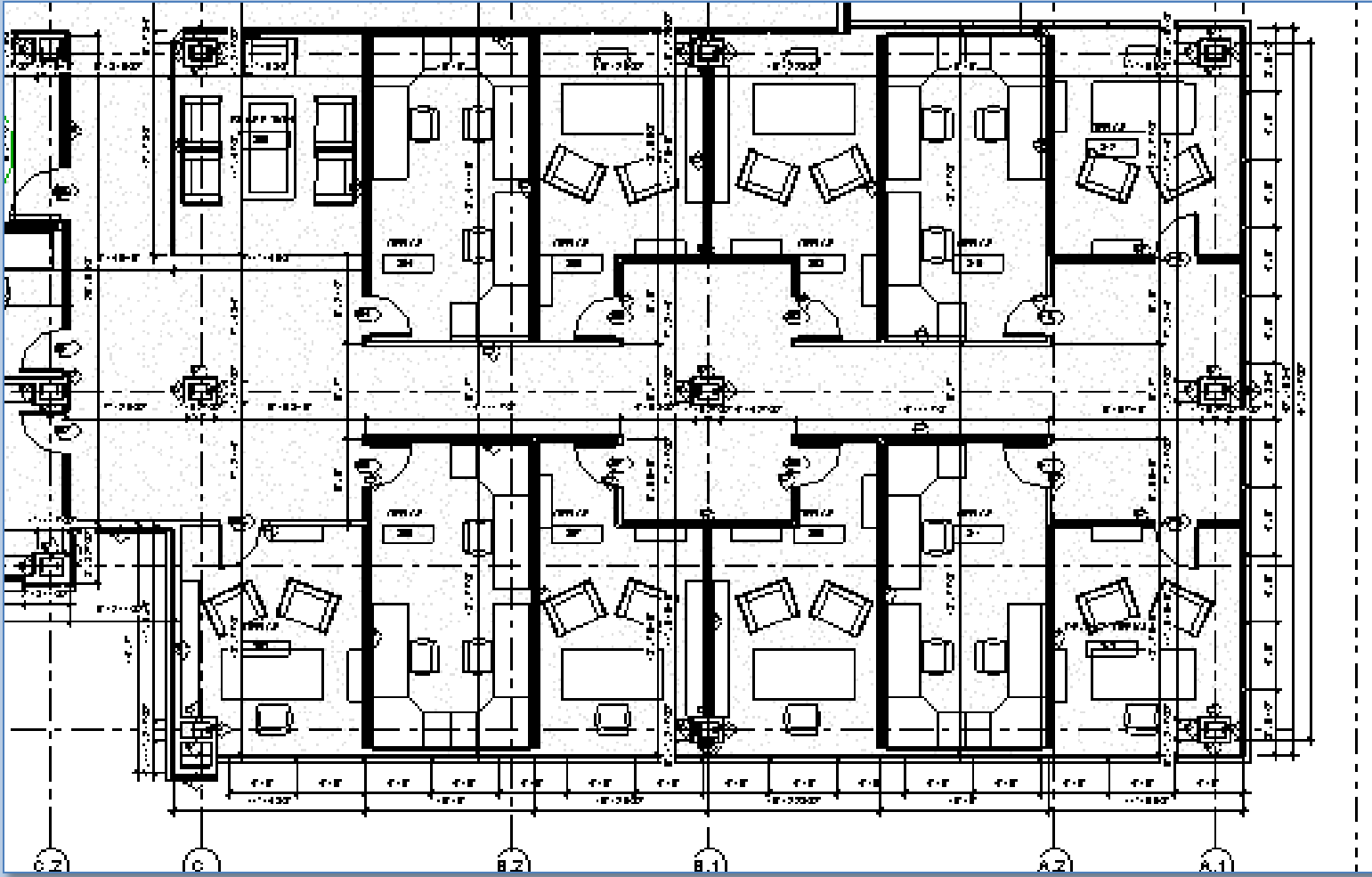
A-105

Work as a Team to Identify Partition Types

Partition Types
Exercise 1.5

Partition Types

- Sample Sheet
- Construction Details : GWB
 - 7 1/4"
 - 4 7/8"
 - 4 1/4"
 - 6 1/8" (2 hr)
 - Shaft (1 hr)
 - Chase (1 hr)
- Construction Details : CMU
 - 4" Nominal
 - 8" Nominal
 - 4" Furring
 - 8" Furring
 - 8" Furring on 2 sides
- CMU Ratings
- Assignment
- USG Selector
- Exercises
- Wrap Up



Work as a Team to Identify Partition Types

Partition Types
Exercise 1.6

Partition Types

- Sample Sheet
- Construction Details : GWB
 - 7 1/4"
 - 4 7/8"
 - 4 1/4"
 - 6 1/8" (2 hr)
 - Shaft (1 hr)
 - Chase (1 hr)
- Construction Details : CMU
 - 4" Nominal
 - 8" Nominal
 - 4" Furring
 - 8" Furring
 - 8" Furring on 2 sides
- CMU Ratings
- Assignment
- USG Selector
- Exercises
-
- Wrap Up

**COLUMBIA UNIVERSITY
CONCORD BUILDTECH**
177 Concord St
Brooklyn, NY 11201

Zakarya A. Sami
177 Concord St.
6th FLOOR

A-108

Partition Types

- Sample Sheet
- Construction Details : GWB
 - 7 1/4"
 - 4 7/8"
 - 4 1/4"
 - 6 1/8" (2 hr)
 - Shaft (1 hr)
 - Chase (1 hr)
- Construction Details : CMU
 - 4" Nominal
 - 8" Nominal
 - 4" Furring
 - 8" Furring
 - 8" Furring on 2 sides
- CMU Ratings
- Assignment
- USG Selector
- Exercises
- **Wrap Up**

Wrap Up

• Partition Types

▪ Sample Partition Sheet

▪ Construction Details

- GWB
- CMU
- CMU w/ Furring

▪ CMU Ratings

- Assignment
- USG Selector
- Exercises

▪ Wrap Up

Assignment : Step by Step

- *Layout Grid in Paperspace & Modelspace*
- *Fit partitions in compact layout*
- *Multiple types from single drawing*
- *Each partition type shows the following:*
 - *Section Views:*
 - *Top condition*
 - *Ceiling condition*
 - *Base condition*
 - *Plan View*
 - *Stud condition*