

# ADA Regulations

CIRCULATION INCLUDING STAIRS AND CLASSROOM  
LAYOUT

---

ARCH 2330  
BUILDING TECH III  
PROF. CHIN  
GROUP 1- EVELYN TERRA  
JANIL CASTILLO

# Summary

---

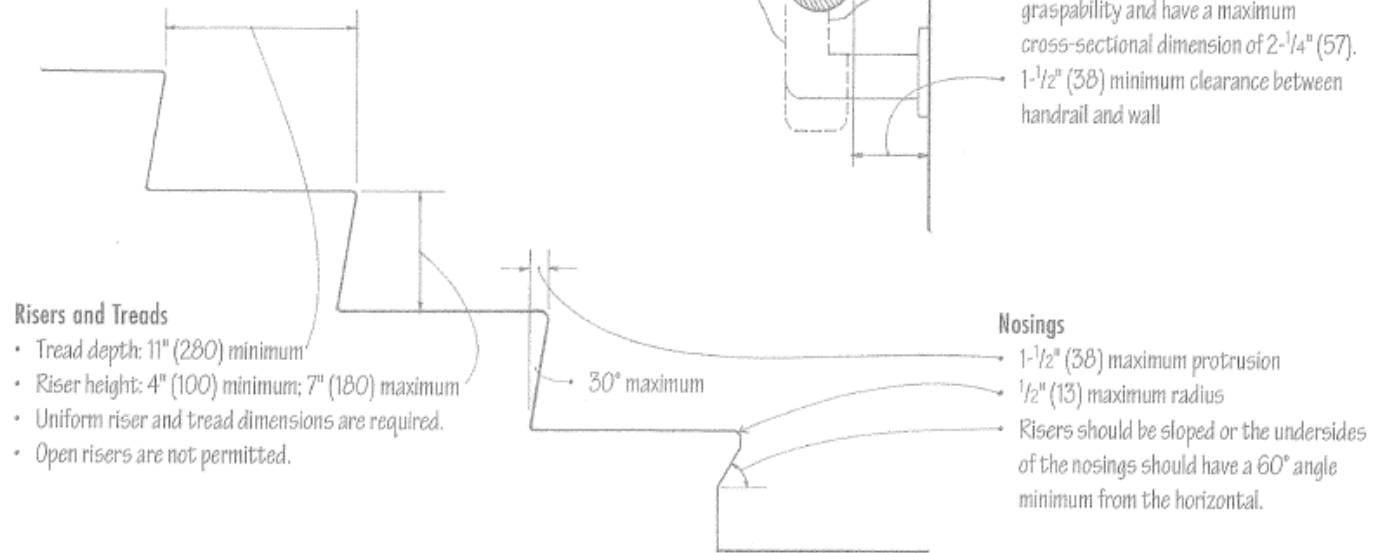
ADA which stands for Americans with Disabilities Act, basically states that for every construction whether it's new or the alterations of existing buildings, the safety and accessibility of impaired people should be taken under consideration, making it a priority at the time of design and construction.

- In circulation the slope of ramps, the height of stair risers and the width of doors, are important factors to address when wanting to comply with ADA requirements.

# Stairs

## ADA Accessibility Guidelines

Accessible stairs should also serve as a means of egress during an emergency, or lead to an accessible area of refuge where people who are unable to use stairs may remain temporarily in safety to await assistance during an emergency evacuation.

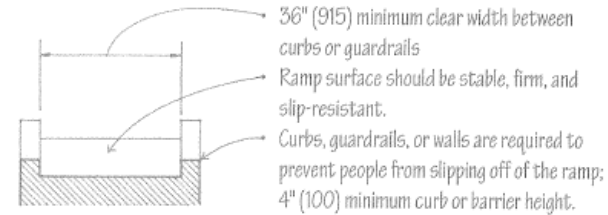
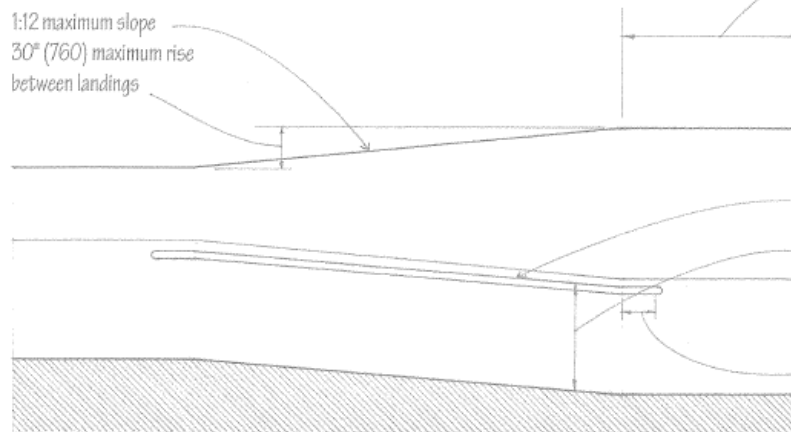


# Ramps

## Ramps

Ramps provide smooth transitions between the floor levels of a building. To have comfortable low slopes, they require relatively long runs. They are typically used to accommodate a change in level along an accessible route or to provide access for wheeled equipment. Short, straight ramps act as beams and may be constructed as wood, steel, or concrete floor systems. Long or curvilinear ramps are usually of steel or reinforced concrete.

- 1:12 maximum slope
- 30° (760) maximum rise between landings



- 36" (915) minimum clear width between curbs or guardrails
- Ramp surface should be stable, firm, and slip-resistant.
- Curbs, guardrails, or walls are required to prevent people from slipping off of the ramp; 4" (100) minimum curb or barrier height.

## Landings

- Ramps should have level landings at each end with a 60" (1525) minimum length.
- Landing should be as wide as the widest ramp leading to it.
- 60" x 60" (1525 x 1525) minimum landing where ramp changes direction

## Handrails

- Ramps having a rise greater than 6" (150) or a run greater than 72" (1830) should have handrails along both sides.
- Handrail requirements are the same as for stairways.
- Extend handrails at least 12" (305) horizontally beyond the top and bottom of ramp runs.

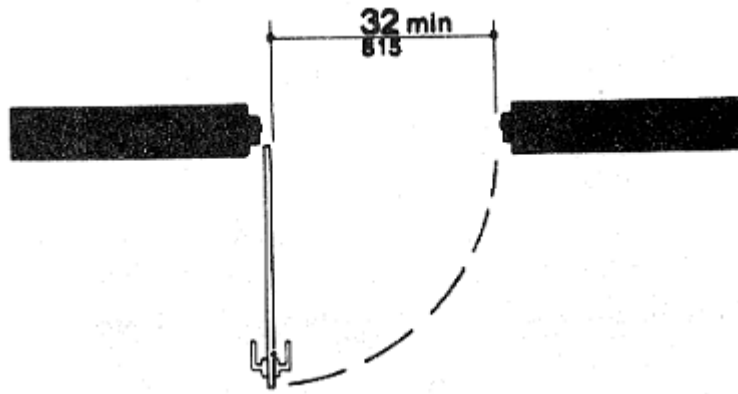
# Doors

**4.13.1 General.** Doors required to be accessible by 4.1 shall comply with the requirements of 4.13.

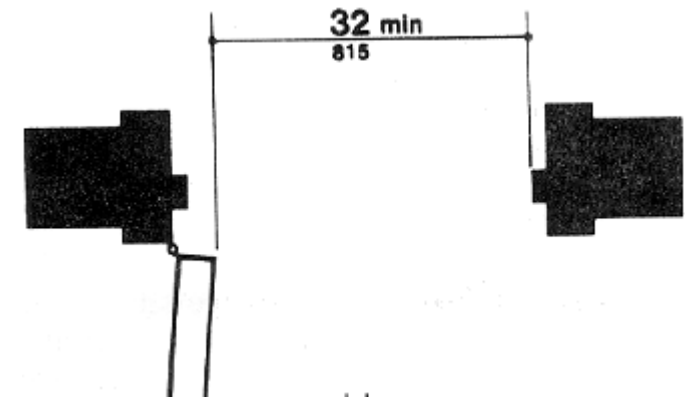
- At least one accessible route complying with 4.3 shall connect accessible building or facility entrances with all accessible spaces and elements within the building or facility.

- 4.13.5 Clear Width.** Doorways shall have a minimum clear opening of 32 in (815 mm) with the door open 90 degrees, measured between the face of the door and the opposite stop. Openings more than 24 in (610 mm) in depth shall comply with 4.2.1 and 4.3.3

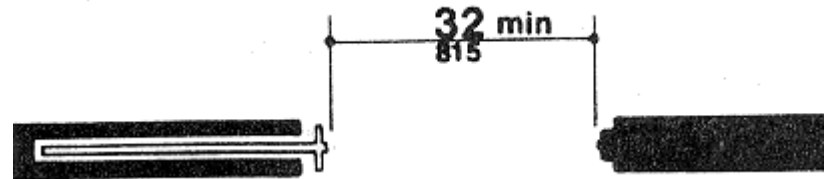
- EXCEPTION:** Doors not requiring full user passage, such as shallow closets, may have the clear opening reduced to 20 in (510 mm) minimum.



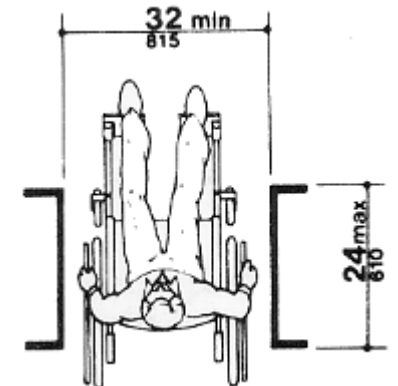
Clear Doorway Width and Depth Hinged Door



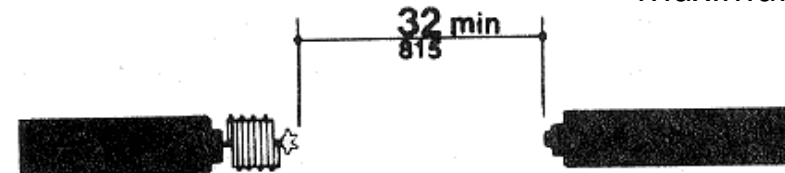
Clear Doorway Width and Depth Detail



Clear Doorway Width and Depth Sliding Door



Clear Doorway Width and Depth  
Maximum Doorway Depth

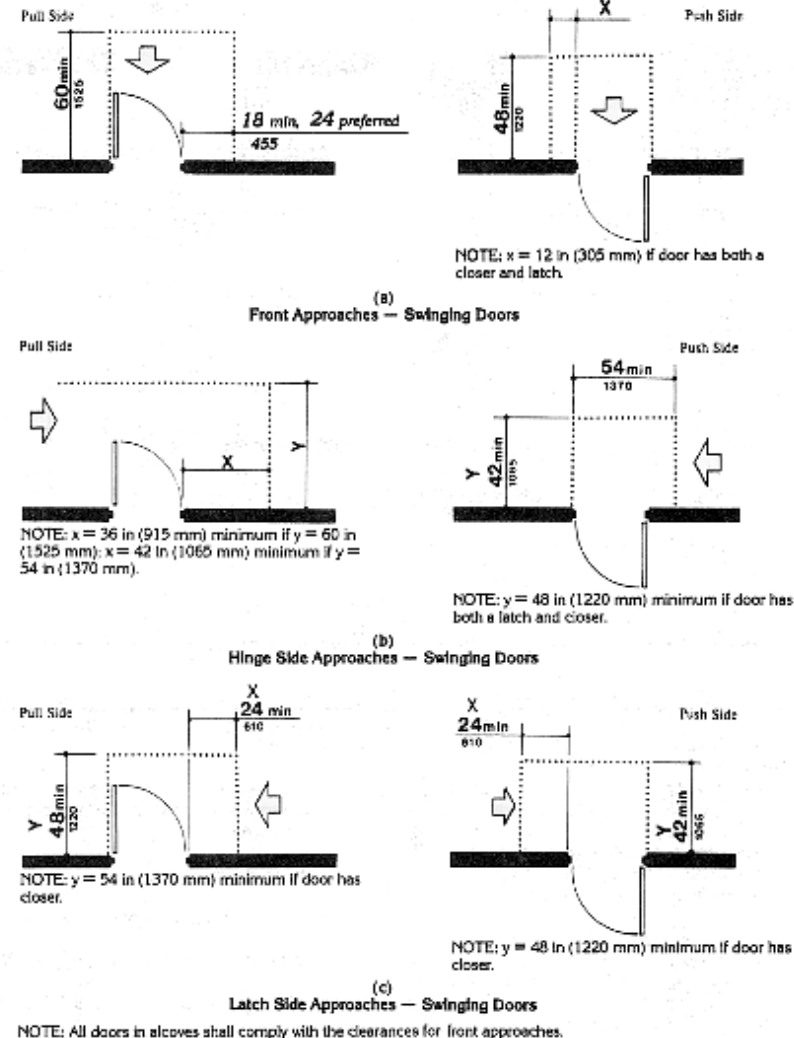


Clear Doorway Width and Depth Folding Door

# Clearances

Minimum maneuvering clearances at doors that are not automatic or power-assisted shall be as shown in the figure adjacent. The floor or ground area within the required clearances shall be level and clear.

**EXCEPTION:** Entry doors to acute care hospital bedrooms for in-patients shall be exempted from the requirement for space at the latch side of the door (see dimension "x" in figure adjacent) if the door is at least 44 in (1120 mm) wide.



**4.32.2 Seating.** If seating spaces for people in wheelchairs are provided at fixed tables or counters, clear floor space complying with [4.2.4](#) shall be provided. Such clear floor space shall not overlap knee space by more than 19 in (485 mm) (see Fig. 45).

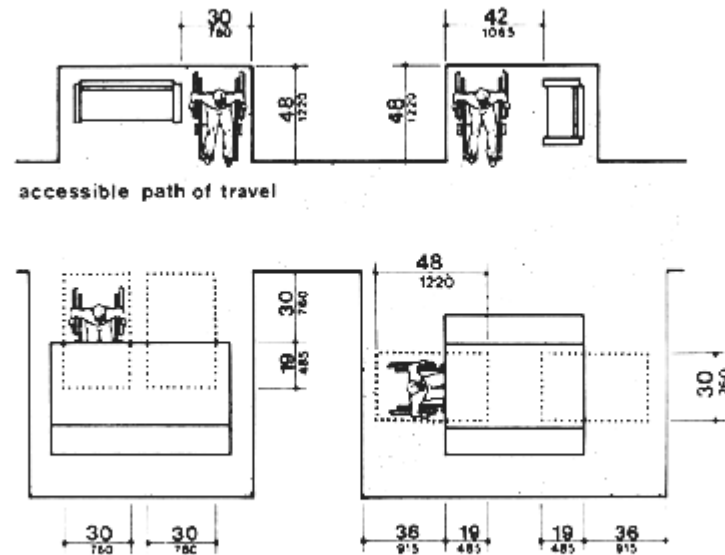


Fig. 45  
Minimum Clearances for Seating and Tables

**Figure 45**

**Minimum Clearances for Seats and Tables**

**4.32.3 Knee Clearances.** If seating for people in wheelchairs is provided at tables or counters, knee spaces at least 27 in (685 mm) high, 30 in (760 mm) wide, and 19 in (485 mm) deep shall be provided (see Fig. 45).

**4.32.4\* Height of Tables or Counters.** The tops of accessible tables and counters shall be from 28 in to 34 in (710 mm to 865 mm) above the finish floor or ground. [Appendix Note](#)

**4.32.5 Children's Fixed or Built-in Seating and Tables.** Fixed or built-in seating or tables used primarily by children ages 12 and younger shall comply with 4.32.5 as permitted by 4.32.1.

EXCEPTION: Fixed or built-in seating or tables used primarily by children ages 5 and younger shall not be required to comply with 4.32.5 if clear floor space complying with [4.2.4](#) parallel to fixed tables or counters is provided.

**(1) Seating.** If seating spaces for people in wheelchairs are provided at fixed tables or counters, clear floor space complying with [4.2.4](#) shall be provided. Such clear floor space shall not overlap knee space by more than 19 in (485 mm) (see Fig. 45).

**(2) Knee Clearances.** If seating for people in wheelchairs is provided at tables or counters, knee spaces at least 24 in (610 mm) high, 30 in (760 mm) wide, and 19 in (485 mm) deep shall be provided (see Fig. 45).

**(3) Height of Tables or Counters.** The tops of accessible tables and counters shall be from 26 in to 30 in (660 mm to 760 mm) above the finish floor or ground.

Classroom  
Layout