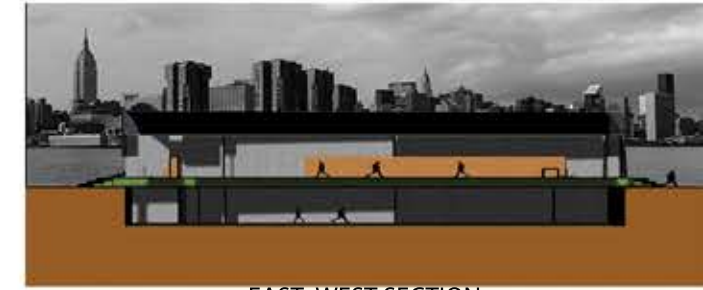


NORTH-SOUTH SECTION



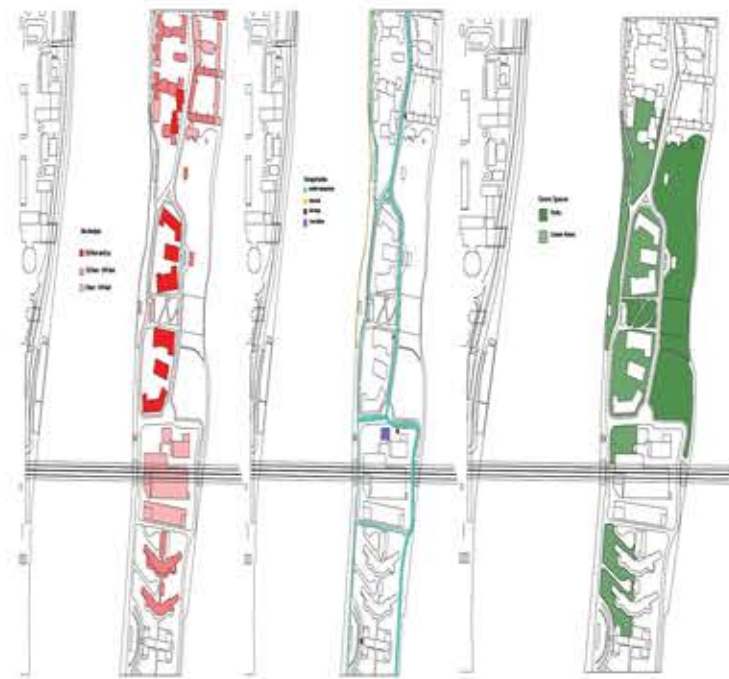
EAST-WEST SECTION

Michael Valdes
The Green Library

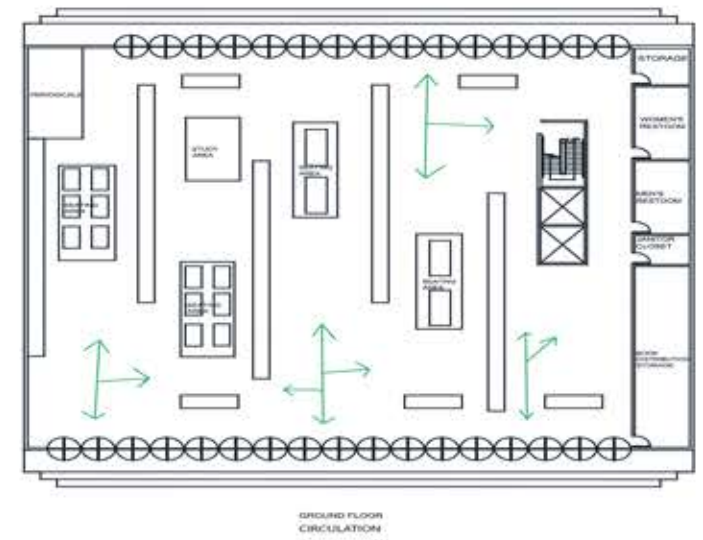
Professor Chin
Design III

Roosevelt Island Narrative

Since Roosevelt Island has a lot of open green space I wanted to use that open green space everyone on the island uses for sports and having a good time all year around. Thus I want to make a library that has the history of sports in it, because this is a library that is mainly for the people who play sports the books won't be hard cover books but instead digital books since sports players carry a lot of stuff with them. Even though this library will cover sports it will contain other topics and subjects for people to use since there is a high school a little further up from our site. Since the library is literally around all the green space around the middle of Roosevelt Island the people who play on the basketball court and baseball field can easily commute to the library since it won't be far for them to walk. The library is also a good spot to do homework after a game and just work there until you finish then head home. Also since there is a hospital close to the site as well there will be medical books in the library since sports players like to read what can cause an injury and what it does to your body when you have an inflicted injury.



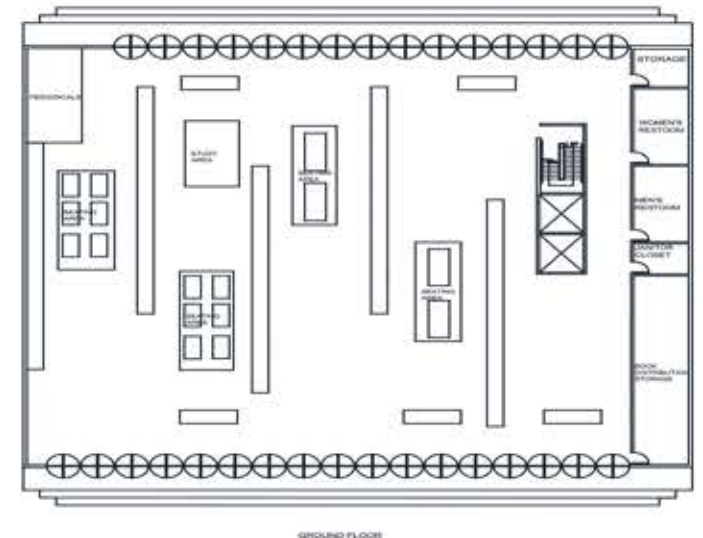
UNDERGROUND FLOOR CIRCULATION



GROUND FLOOR CIRCULATION



UNDERGROUND FLOOR



GROUND FLOOR