

# CHAPTER 2

pp. 2.02-2.30

## Summary of pages

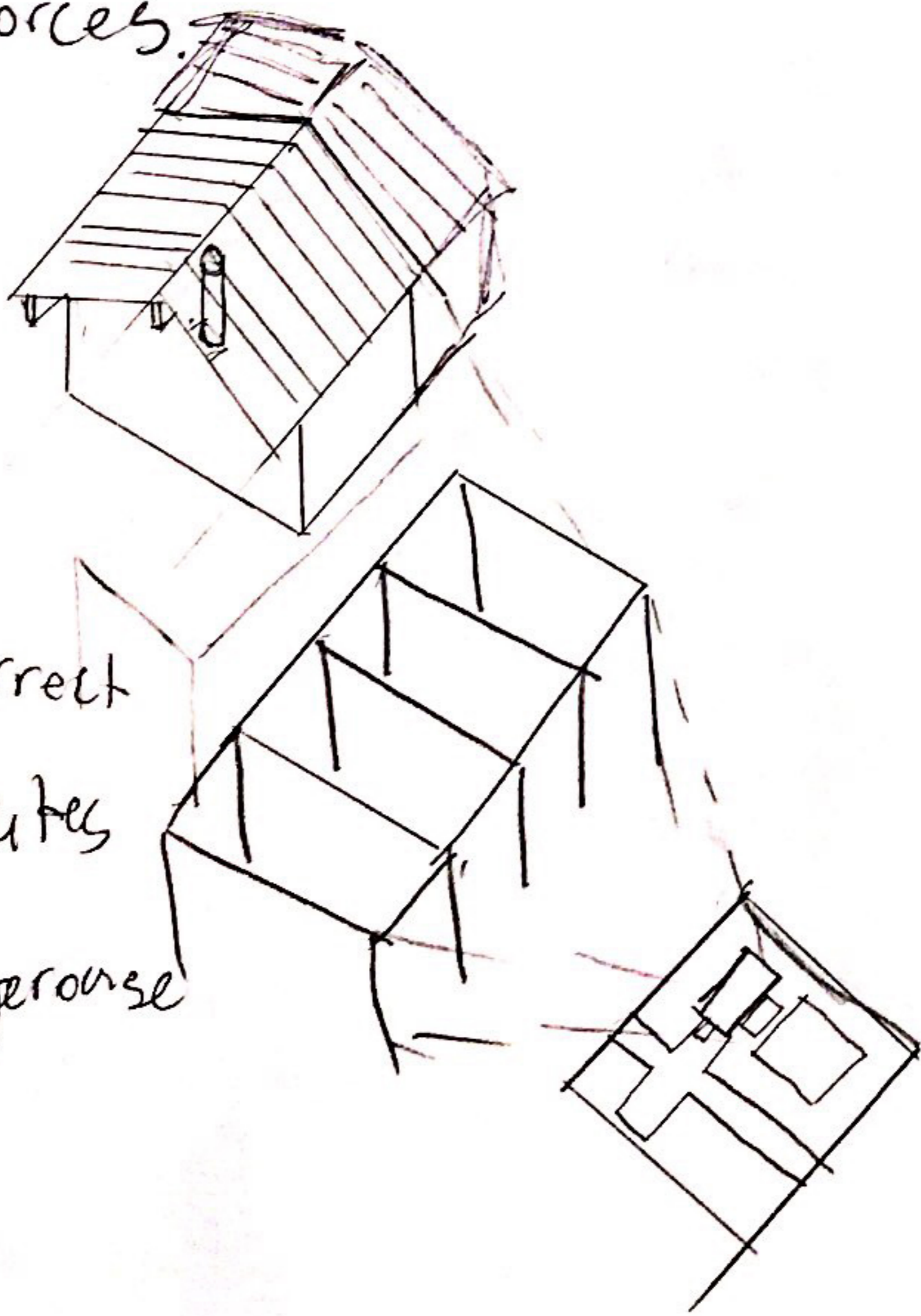
Summary: The following pages began by introducing how the structural system of a building or house multiple parts to it. From looking at the things like windows and walls to static loads, cable structures, and joint connections.

- Moment force - a force which causes something to rotate.
- Rafter - angled beams usually used on roofs.
- There are things looked at such as Earthquake loads and structural forces.

### Lateral loads

- Wind ~~etc~~
- earth quake

- \* Egress - giving correct and alternative routes to get out of dangerous situations.



- Ventilation systems are connected to the Duct

mechanical

• HVAC

conditioning  
ductwork

3d truss - Space framing.