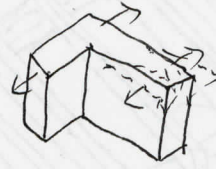
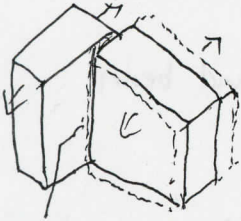


- 2.23 - Structures subject to lateral forces placed symmetrically with centers  
 - A reentrant corner ~~cause~~ <sup>cause</sup> differential motions between different portions  
 result of local stress focus at the corner

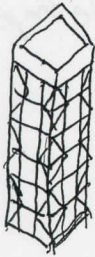


seismic joints - separate adjacent building masses

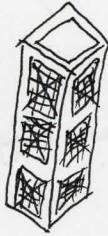
. A weak story has lateral stiffness that lower than the stories on top.

2.24.

Rigid frame is not useful to achieve lateral stability



Brace Tube



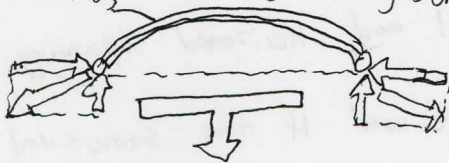
Trussed Tube

. Tuned mass damper ~~is~~ attached to the upper point of a huge building with spring damping mechanisms

. Base isolation is isolated the base of a building from the ground and prevent destructive resonances

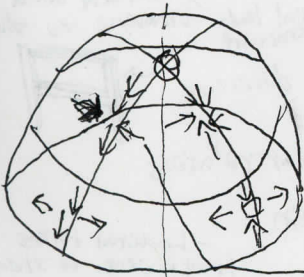
2.25 Arches is use for support a vertical load by axial compression

Rigid Arches - carrying bending stress



Vault extended in a third dimension, the longitudinal support walls need to be buttress to counteract the outward thrusts

2.26 Dome - spherical surface structure that has a circular plan and constructed stacked blocks



⊗ Schwedler domes, Lattice domes and Geodesic domes are the three kinds of domes

Hoop force - restraining the out of plan movement