

Stairs

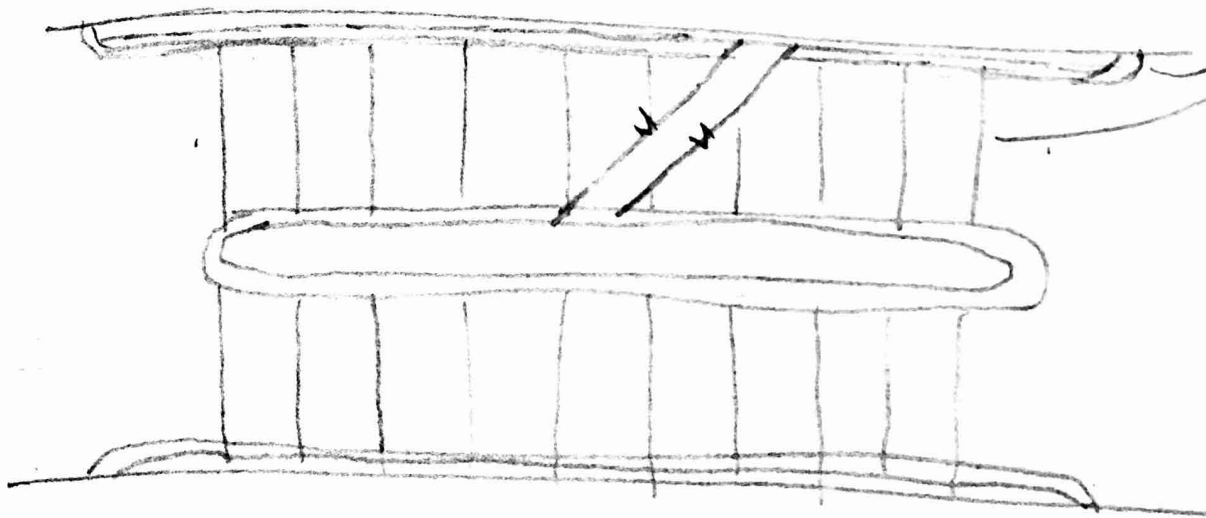
$$24 \leq 14 + T \leq 25$$

Stairway width

- 44" (1120) minimum width; 36" (915) minimum for stairways serving an occupant load of 49 or less.

- Handrails may project a maximum of 4-1/2"

- Stringer and trim 1-1/2"



Landings

- Should be at least as wide as the stairway

- Minimum length equal to the stair width

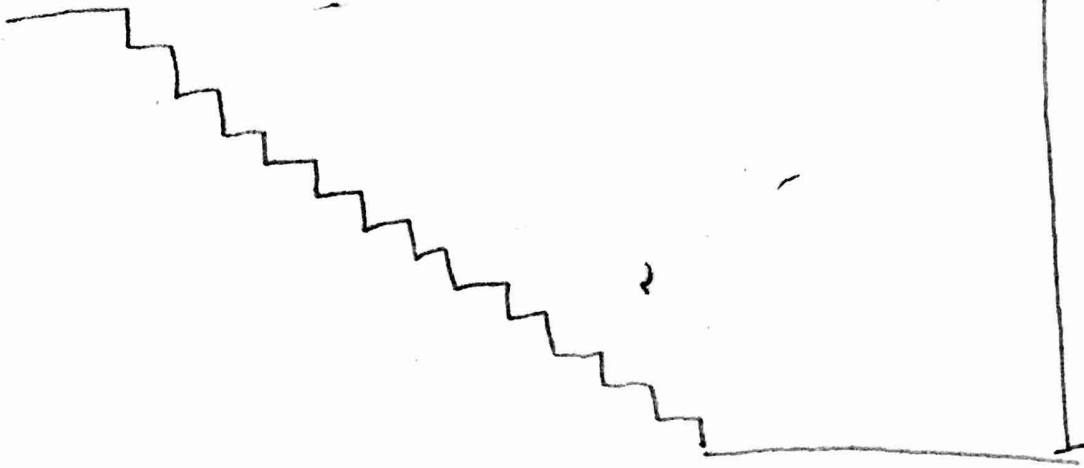
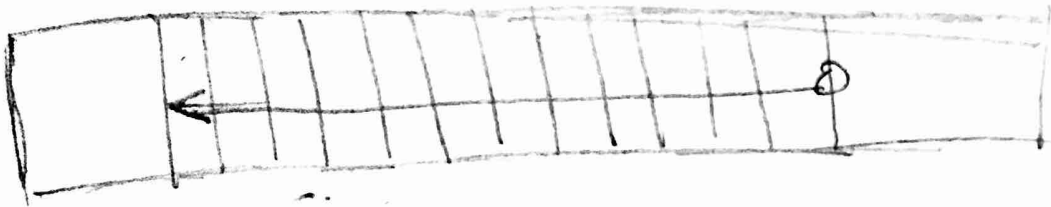
- Not to be longer than 48" as serving the straight-run.

- Door should swing in direction of egress.

- Door swing should not reduce the landing to less than half

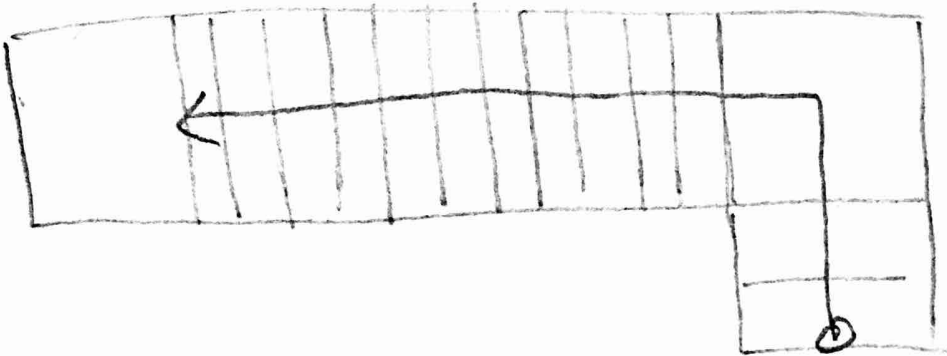
- Fully open should not have width by more than 7"

Straight-Run Stair



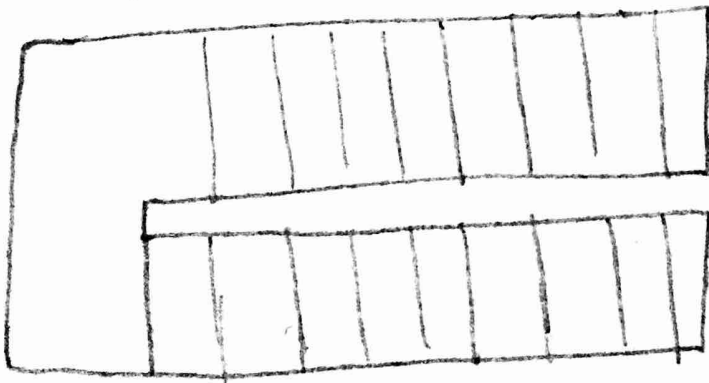
- Does not include turns or winder
- 12' between landings

Quarter Turn Stair



- L shape
- May be equal or unequal (Flight connected by the Landings)

Half-Turn Stair



- Turns 180°
- Flight connected by the landings may be equal or unequal

