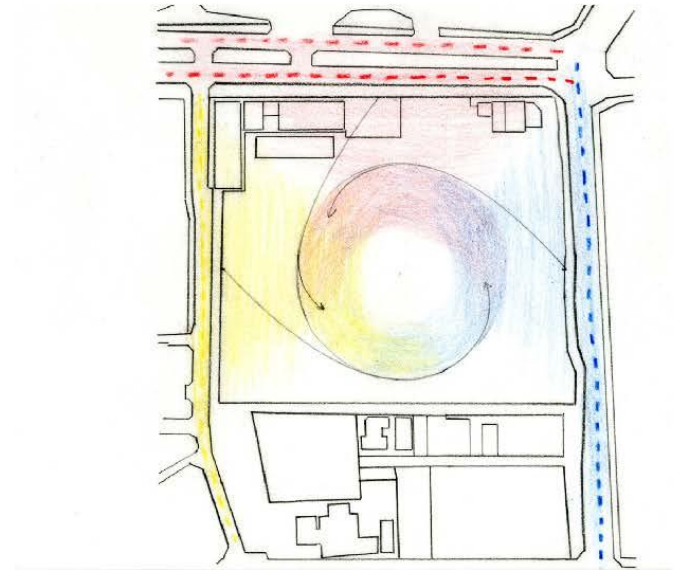
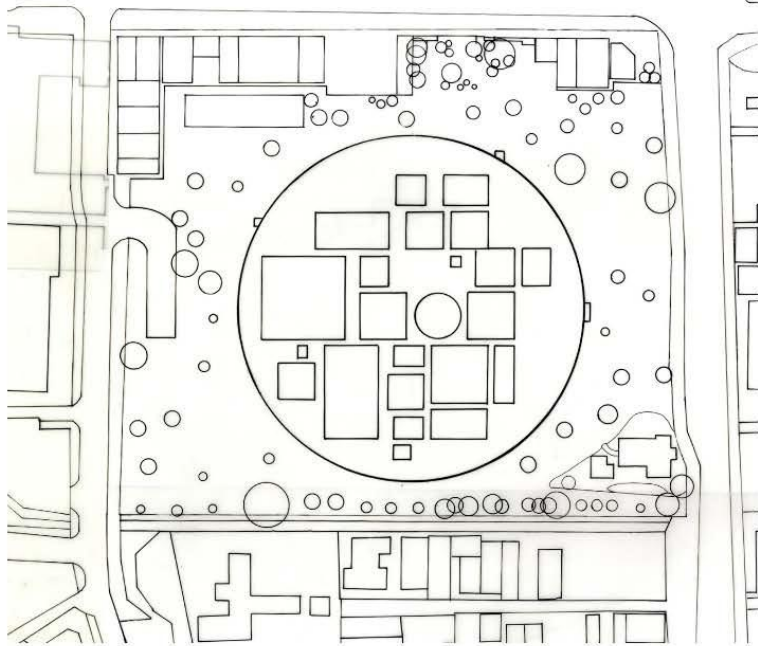
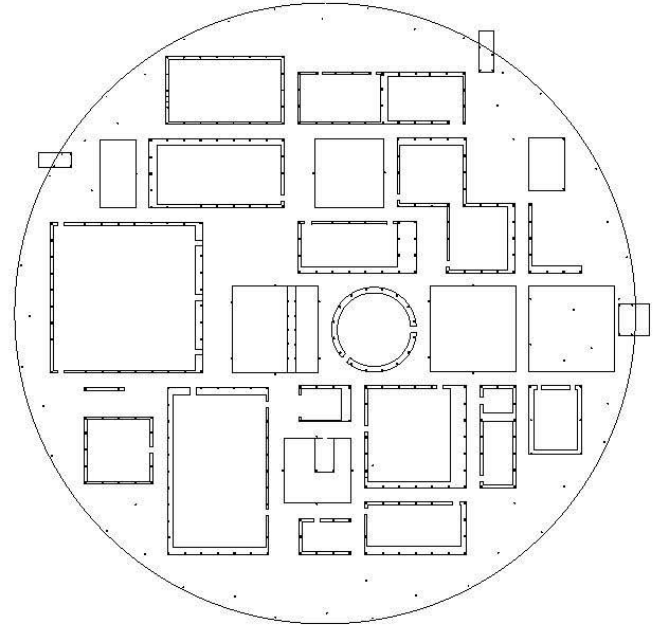
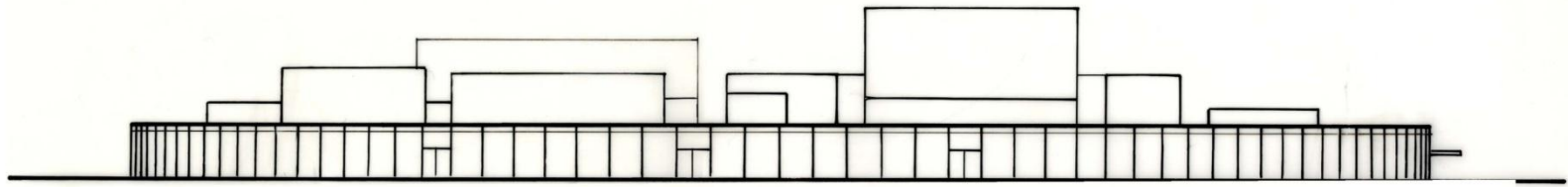
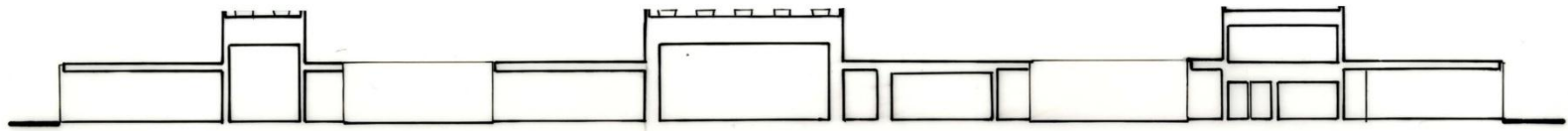


Diagrams





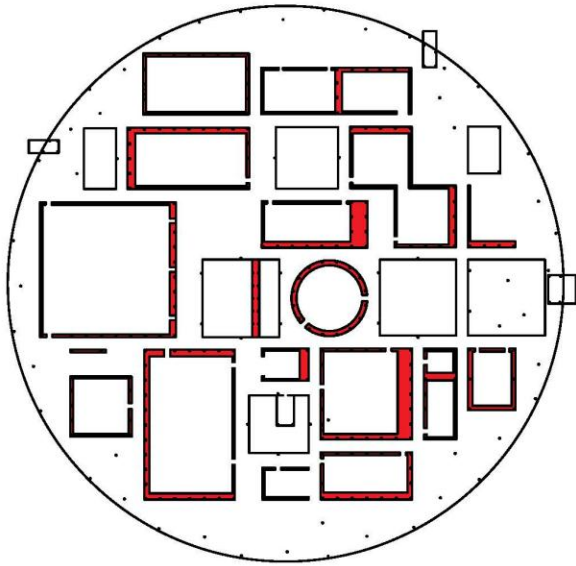
SOUTH ELEVATION



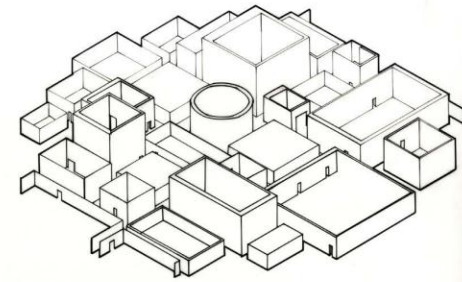
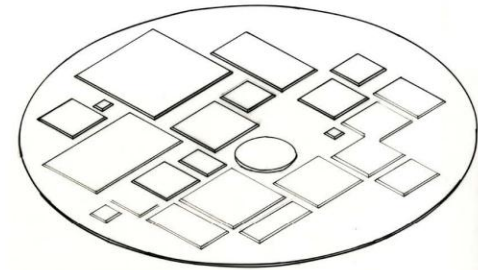
SECTIONS 1/32" = 1'-0"



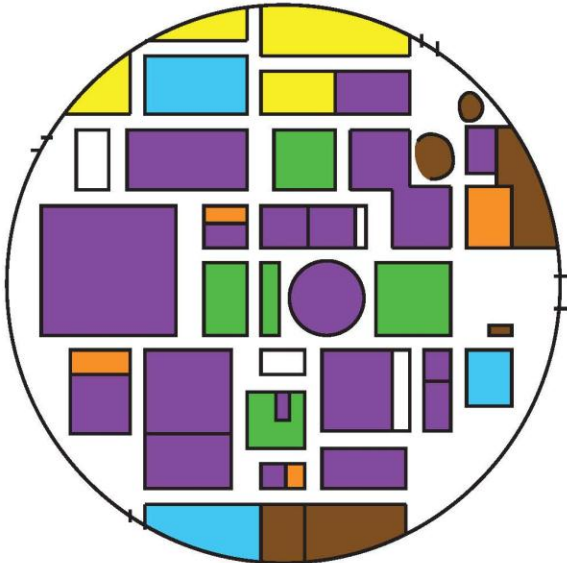
STRUC-



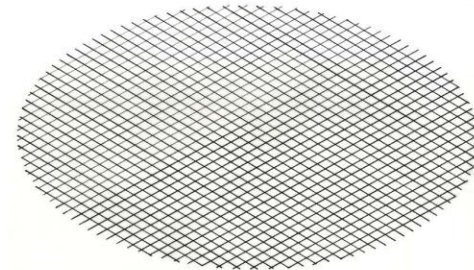
- I-BEAMS
- COLUMNS
- STRUCTURAL WALLS

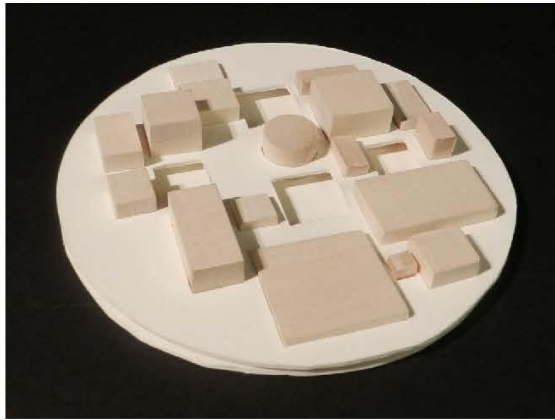


PROGRAM



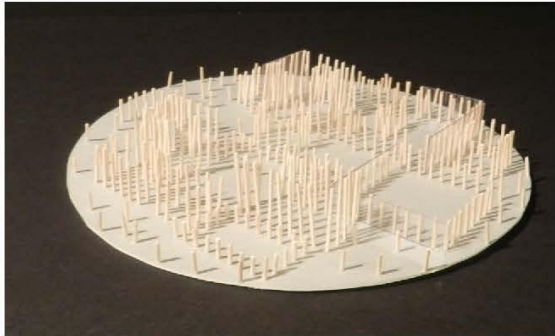
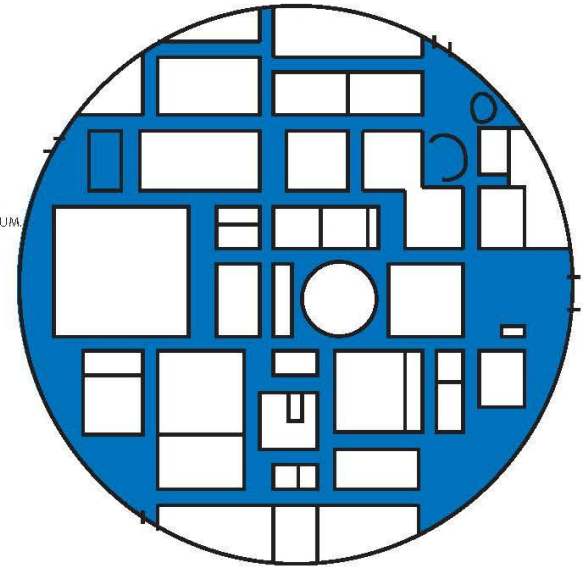
- GALLERIES
- RESTROOMS
- COURTYARDS
- THEATER, ART LIBRARY, LECTURE HALL
- STORE, CHILDREN'S AREAS, RESTAURANT
- OFFICES, MEETING ROOMS, STAFF ROOMS





CIRCULATION

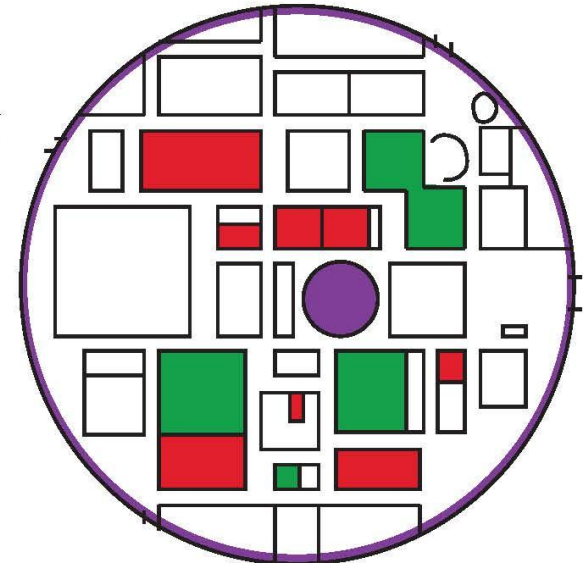
EACH VOLUME IS SURROUNDED BY HALLWAYS TO INVITE THE PATRON TO INVENT HIS OR HER OWN CIRCULATION. THIS CREATES A TRULY UNIQUE AND PERSONAL EXPERIENCE WHILE IN THE MUSEUM.



VOLUME

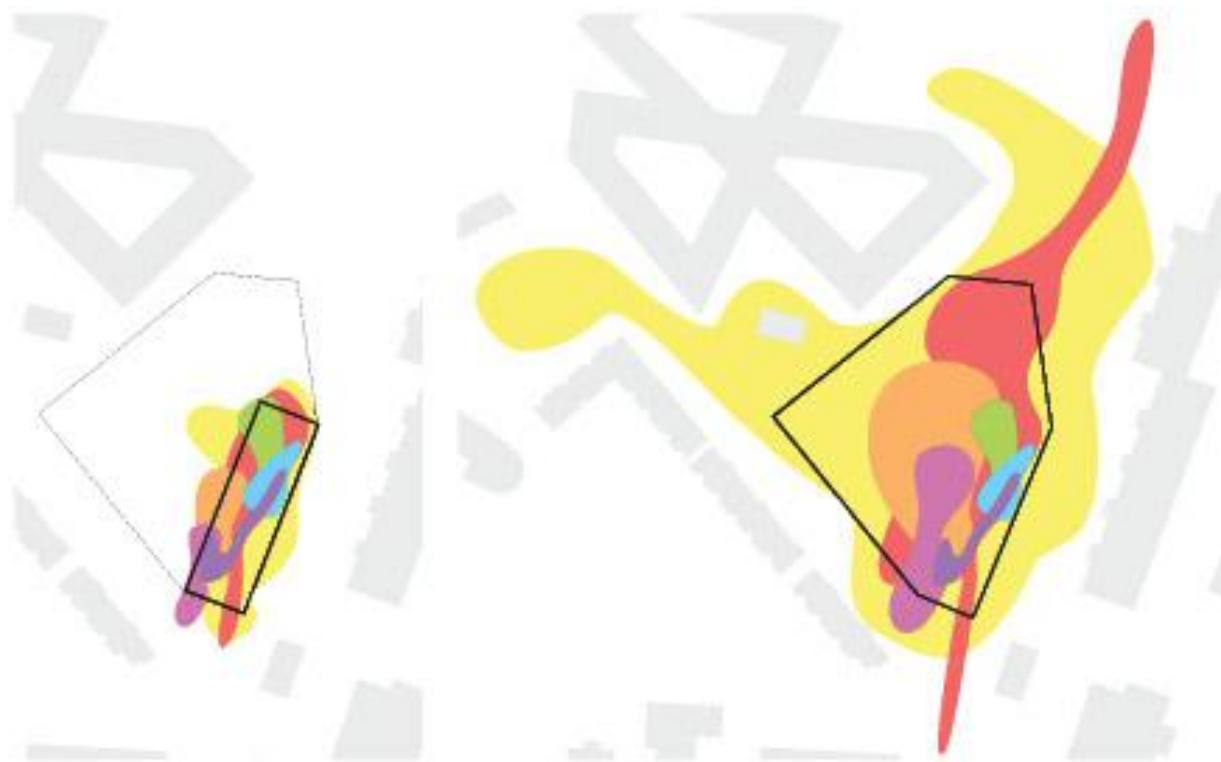
THE MUSEUM GALLERY SPACES WERE DESIGNED USING PRIMARILY SIMPLE RECTANGLES AND SQUARES. ONE GALLERY SPACE MIMICS THE CIRCULAR SHAPE OF THE FACADE.

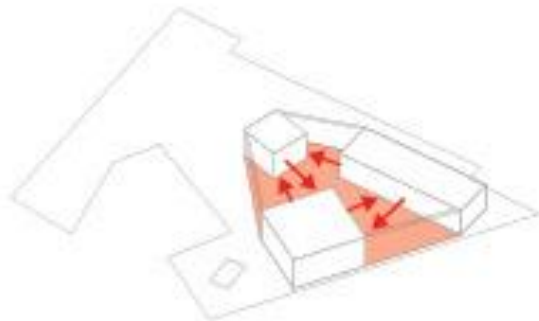
THE GALLERIES EXIST IN FOUR DIFFERENT HEIGHTS:
 4.5 METERS (APPROX. 14'-9")
 6 METERS (APPROX. 19'-8")
 9 METERS (APPROX. 29'-6")
 12 METERS (APPROX. 39'-4")



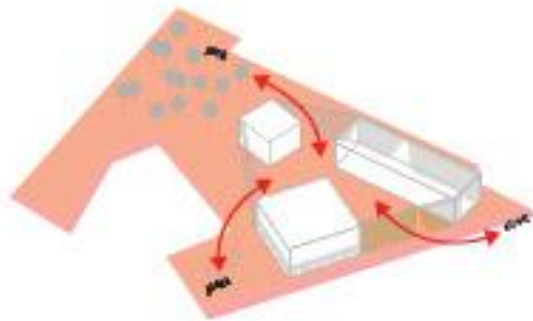
MVRDV and ADEPT Win House of Culture and Movement in Frederiksberg, Denmark







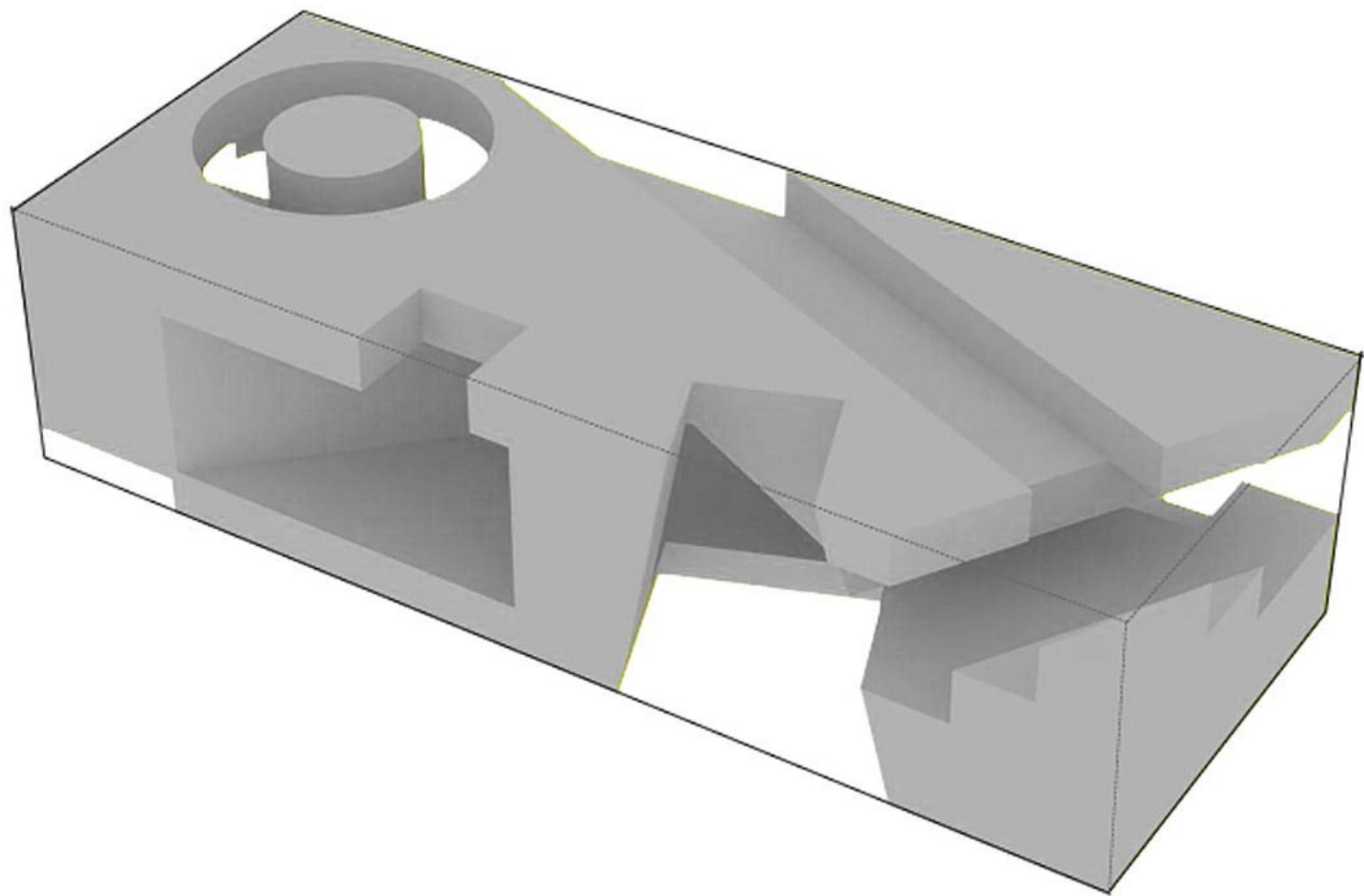
SPARK SQUARE

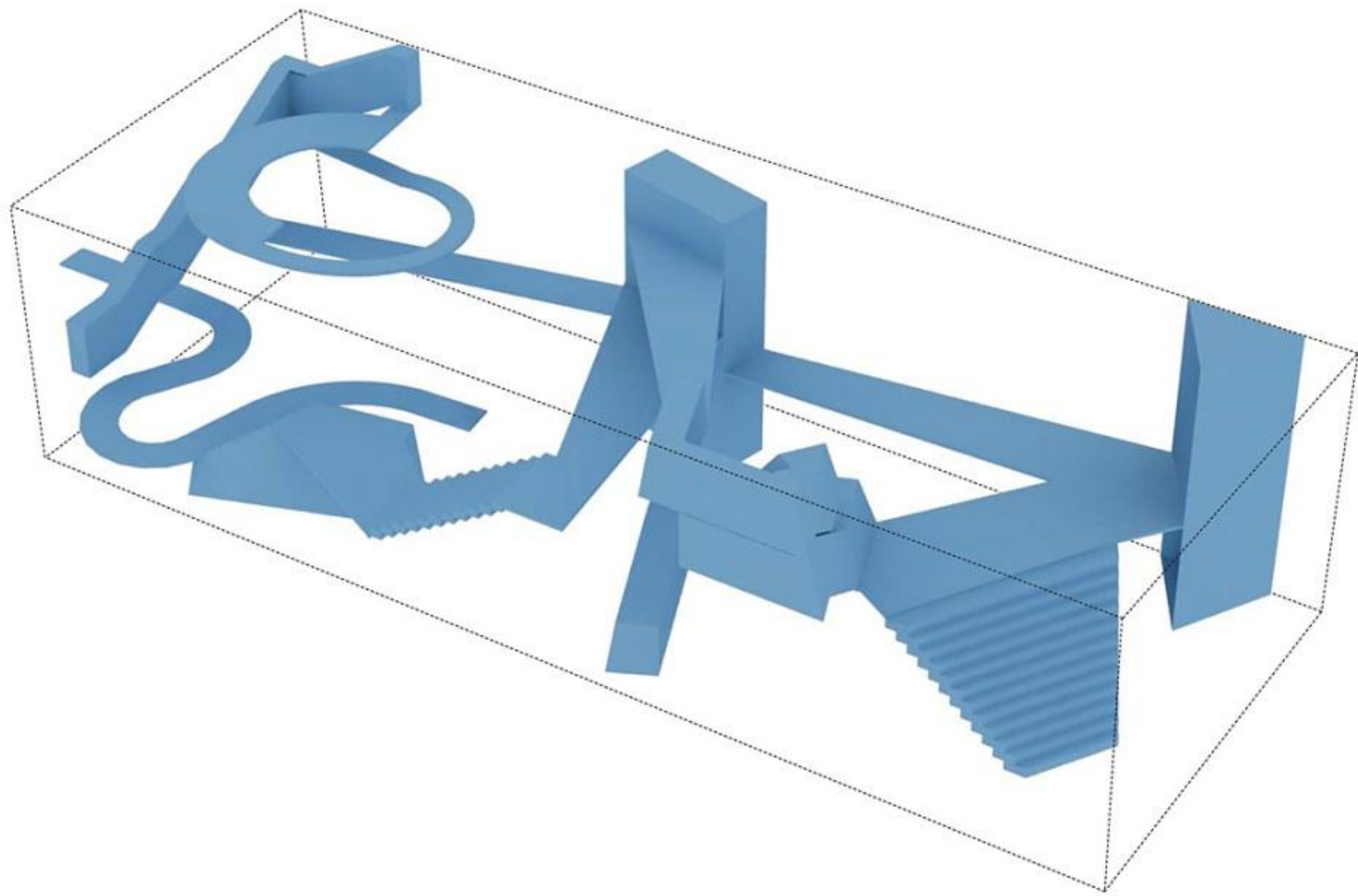


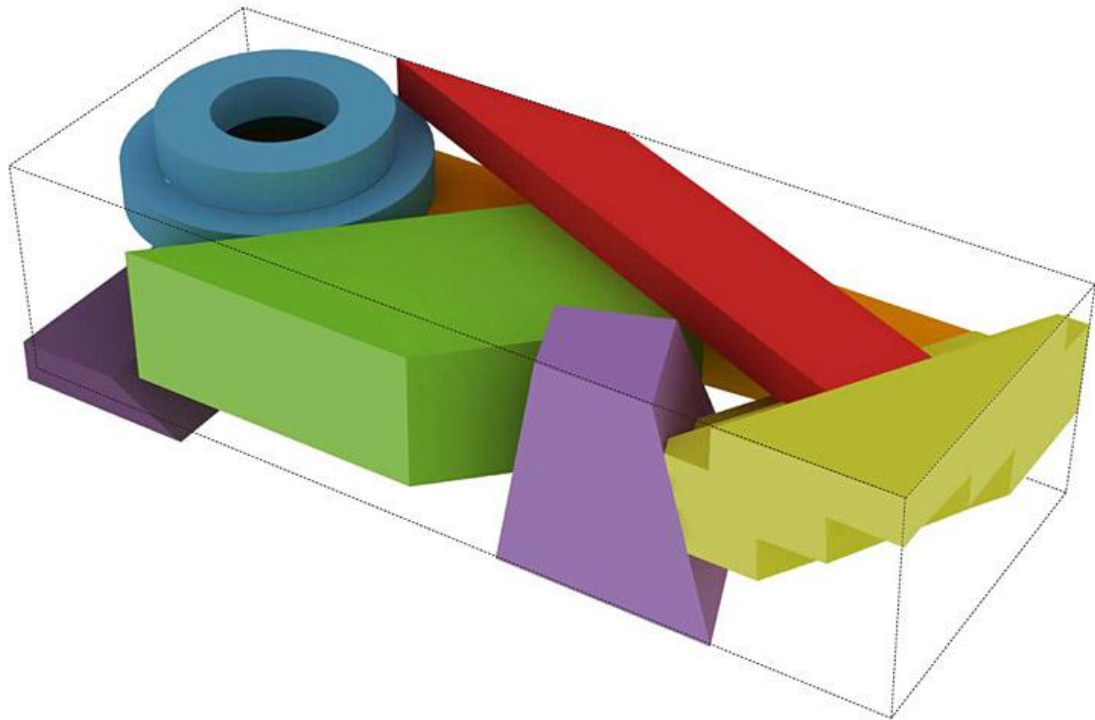
URBAN DYNAMO



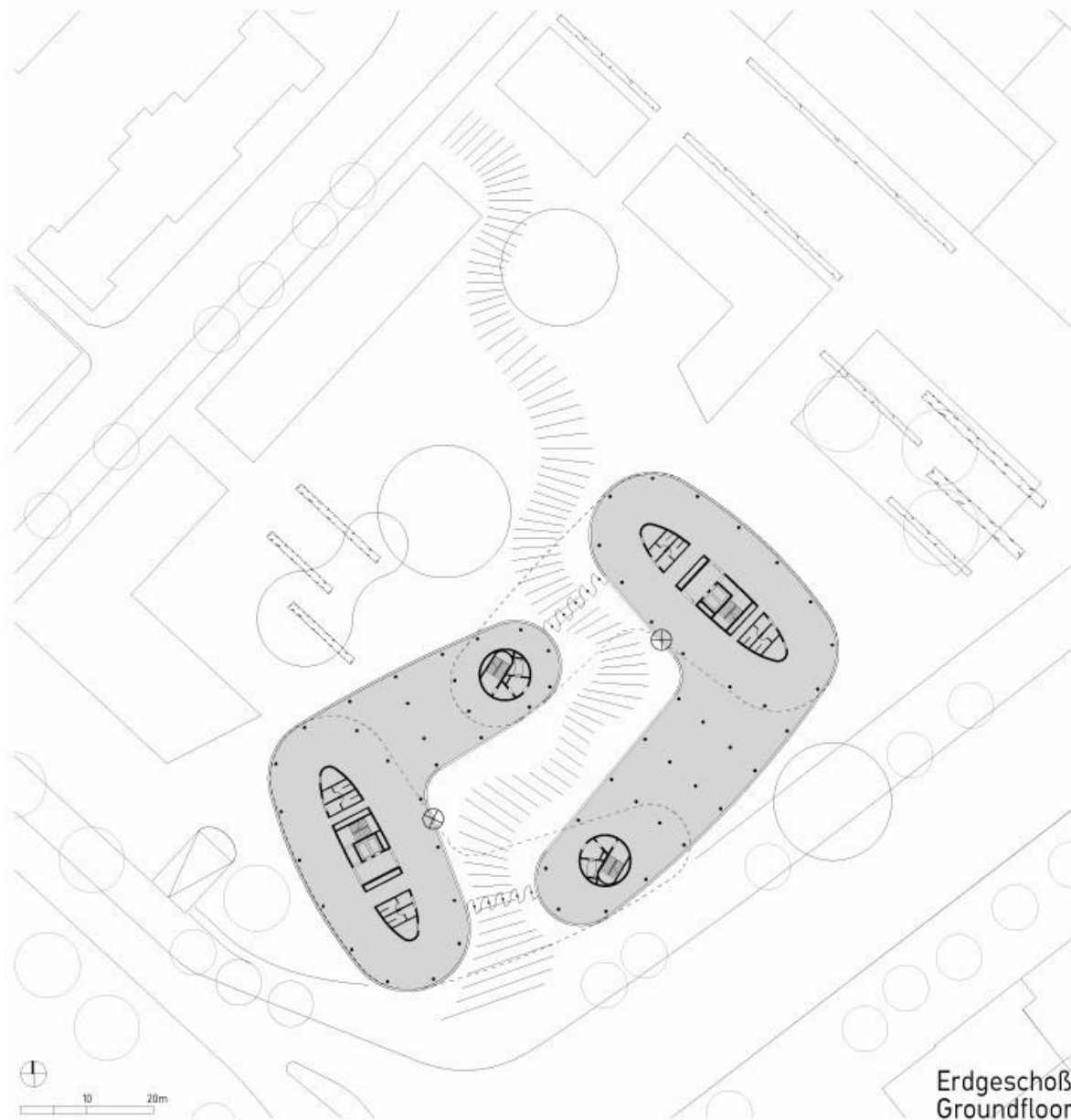
URBAN CURTAIN



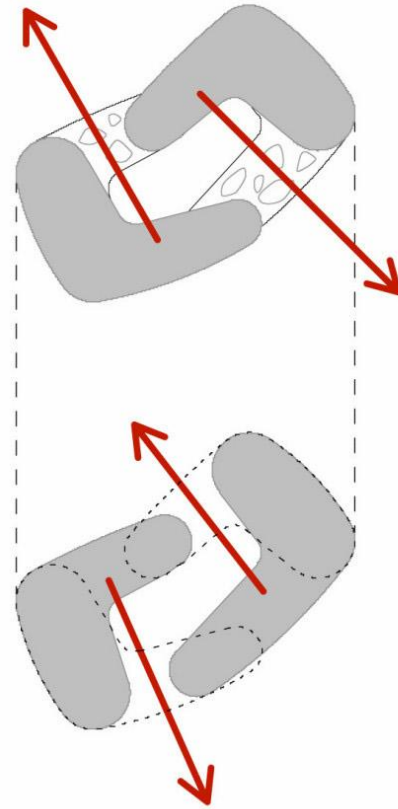
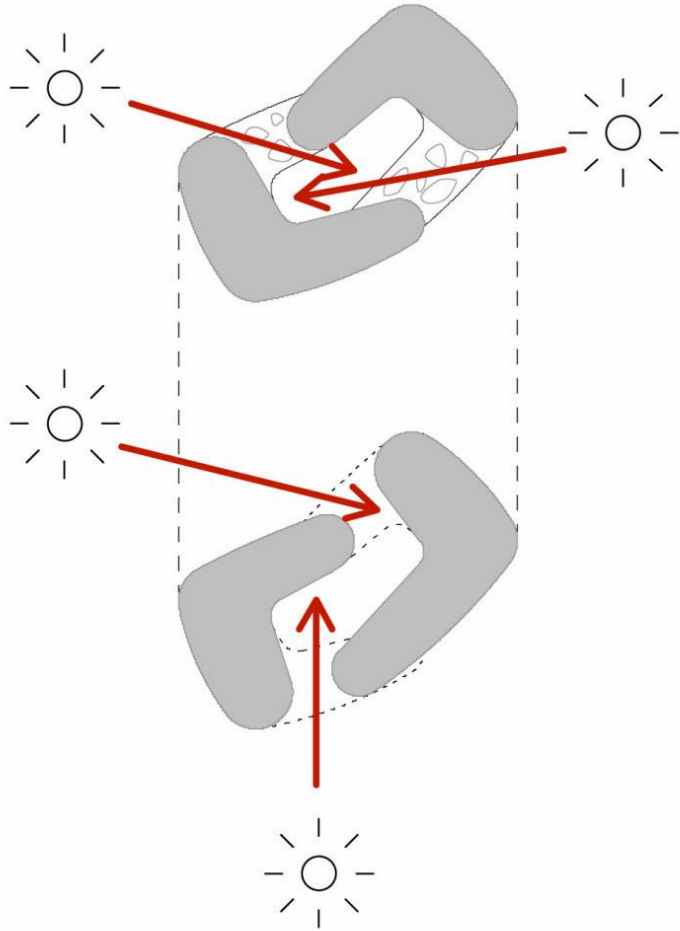


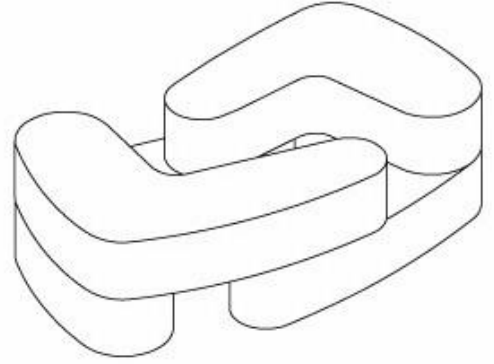
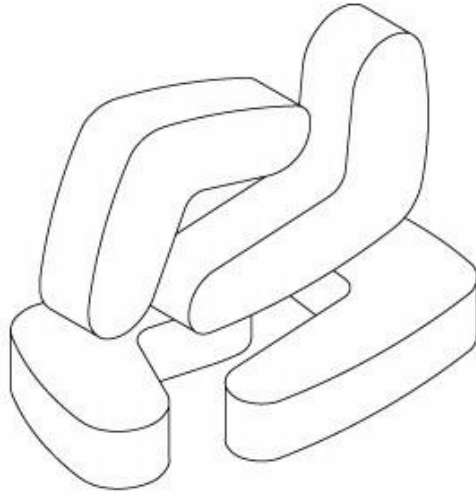
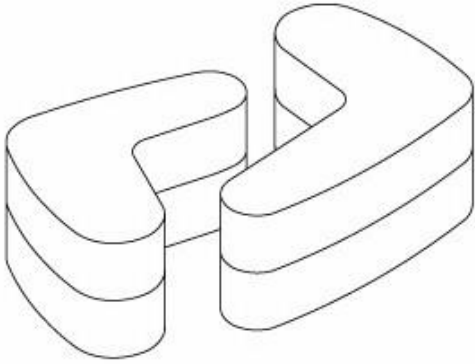


- Wellness
- Zen
- Theatre
- Pulse / Fitness
- Study / Exhibition
- Health / Food
- Administration



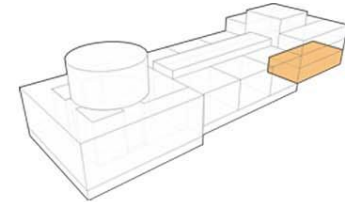
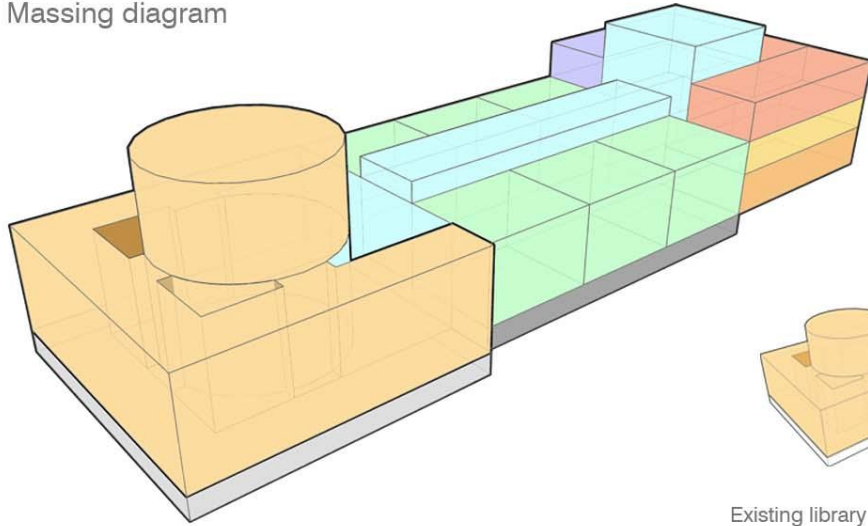
Erdgeschoß
Groundfloor



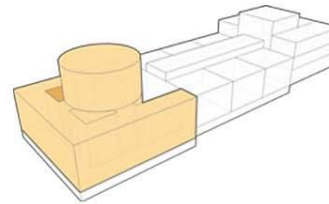


Massing Diagrams

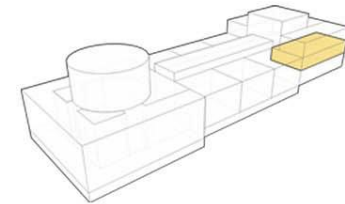
Massing diagram



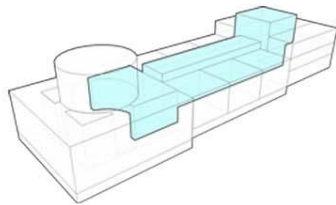
Entrance hall



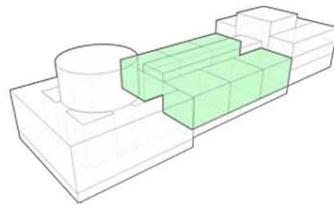
Existing library



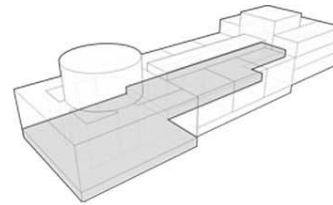
Institute of children's books



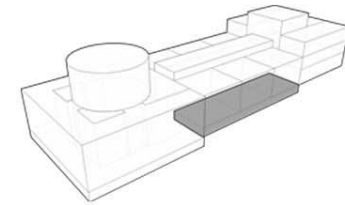
Central open space



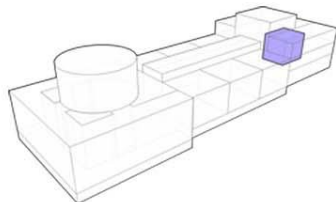
Added library wings



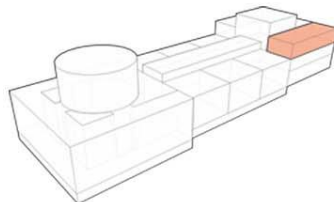
Depository



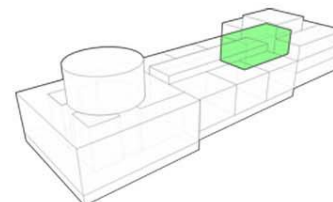
Street level retail space



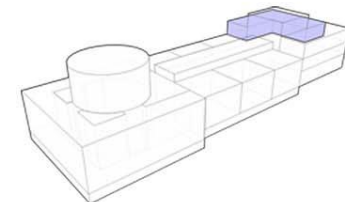
Auditorium



Learning space

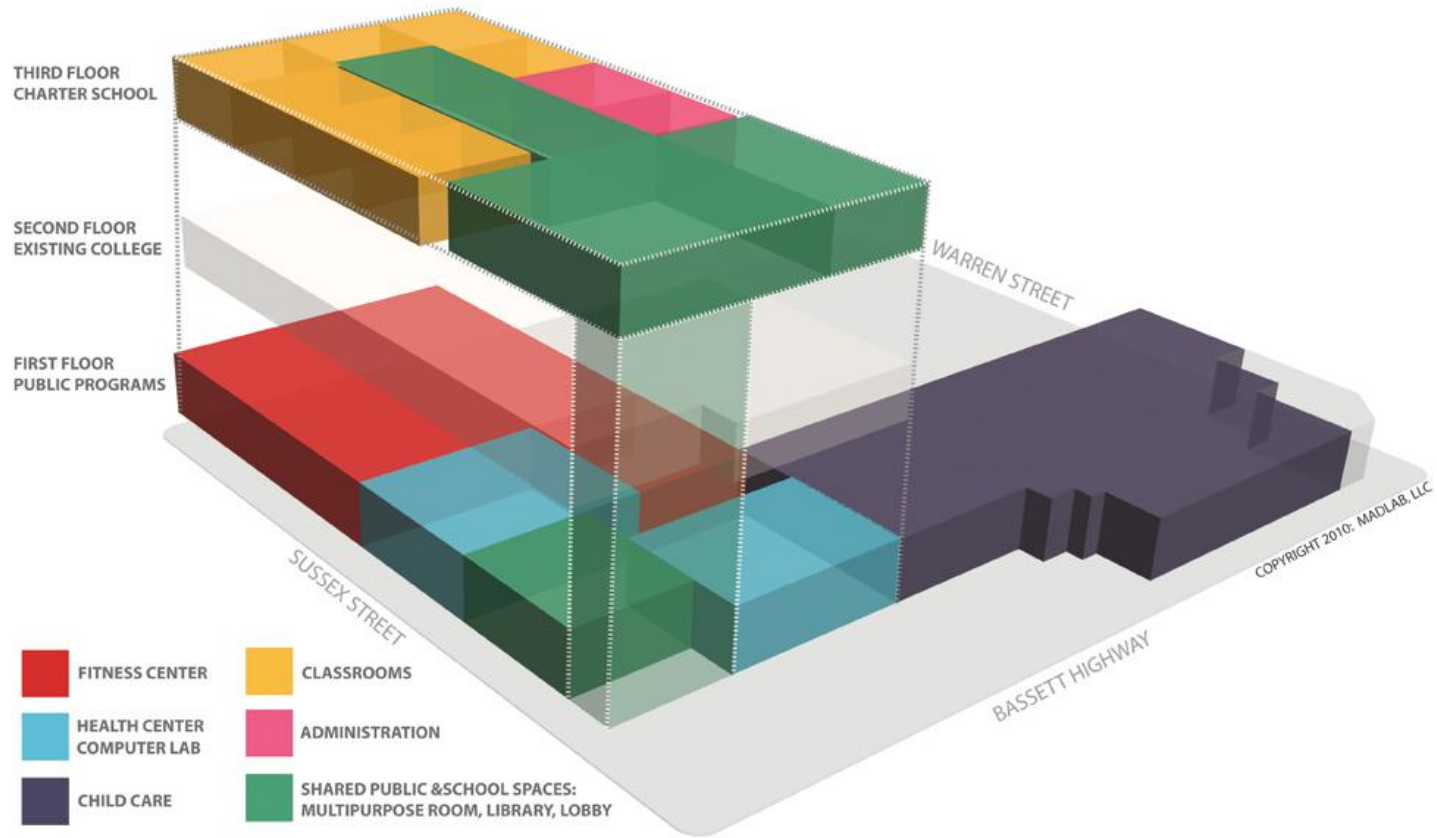


Administration

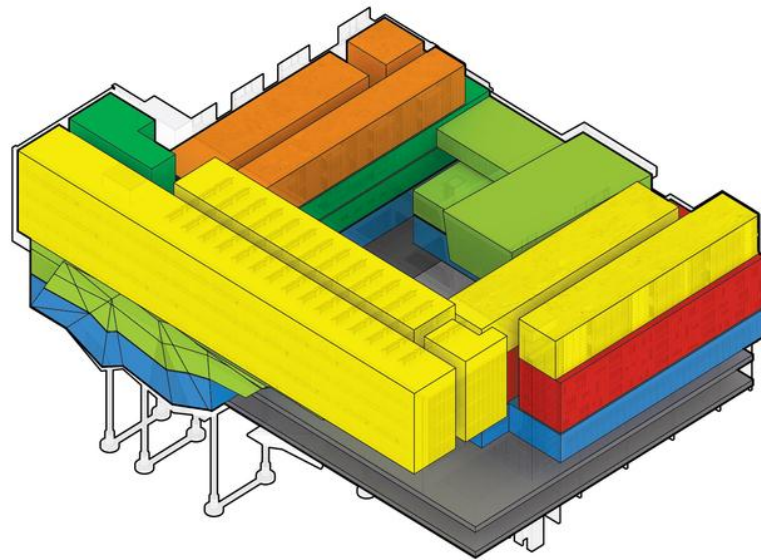
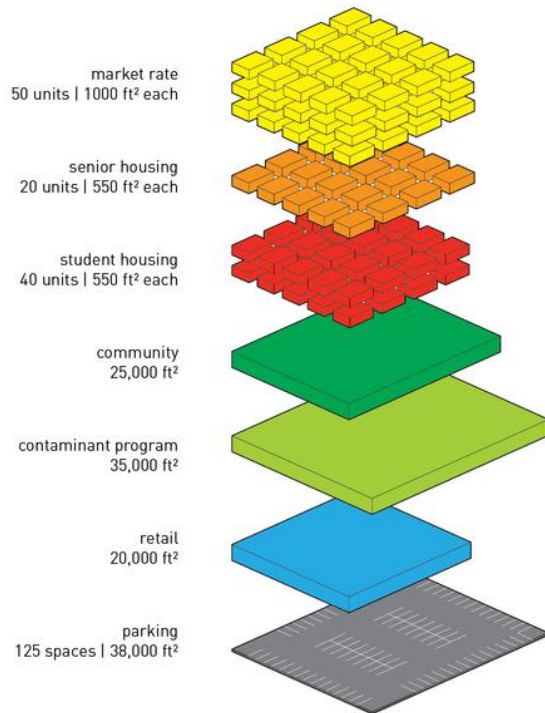


Studio space

Massing Diagrams



Massing Diagrams



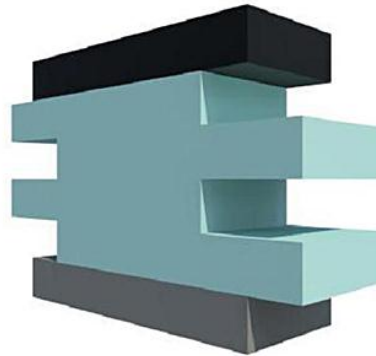
program

Massing Diagrams

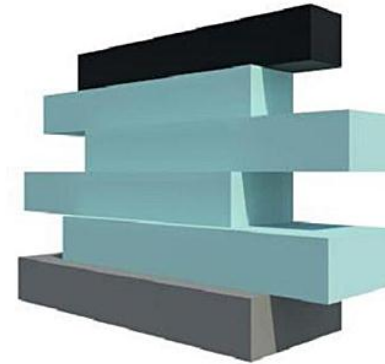
- Private Space
- Vertical Farms
- Public Space



Push/Pull masses to create balconies and overhangs



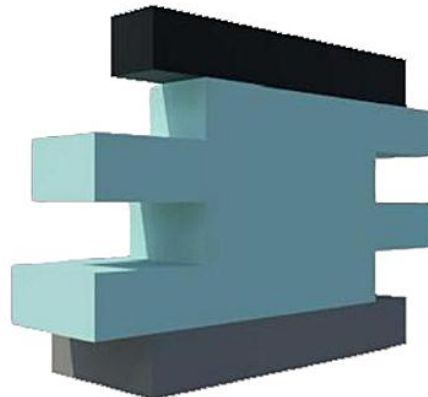
Expand/Contract masses to create terraces



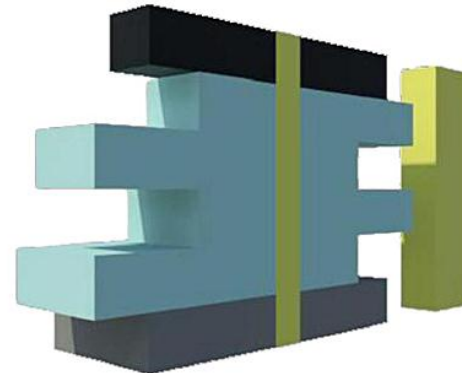
Expansion/Contraction allows max light penetration



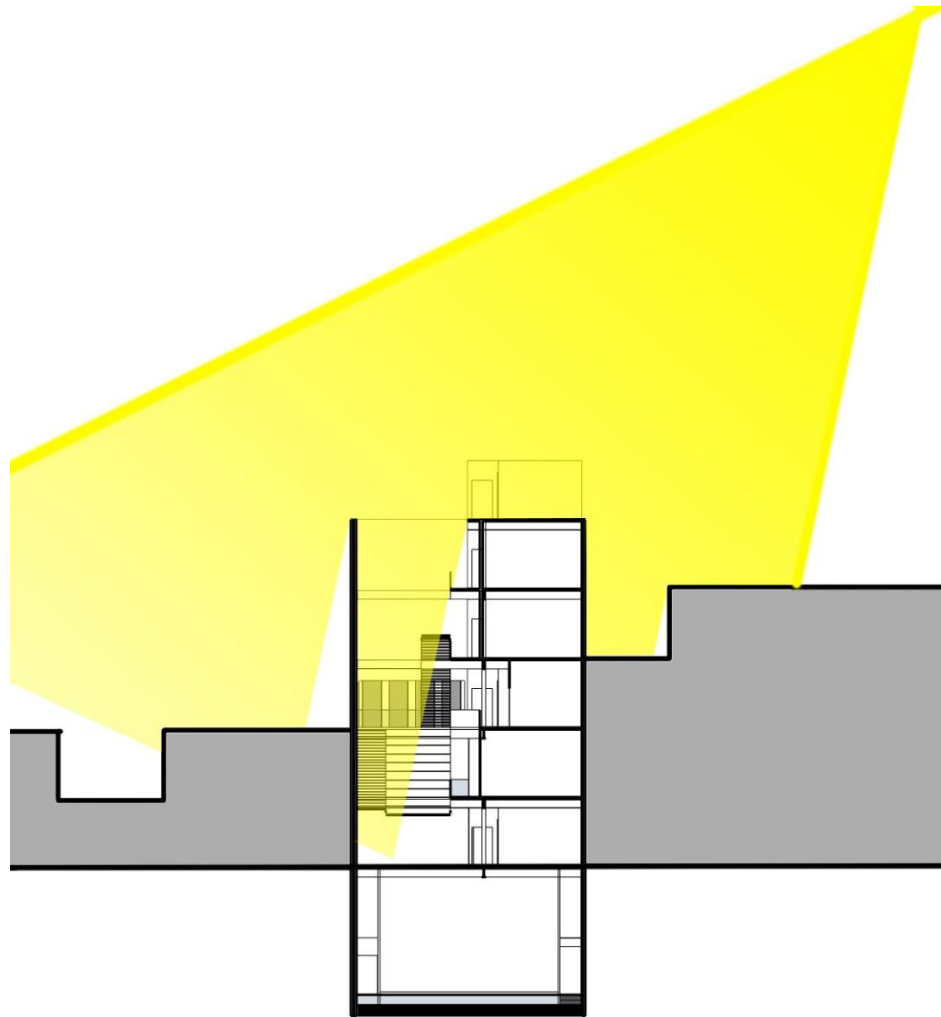
Vertical Shaft enables vertical circulation/service elevator



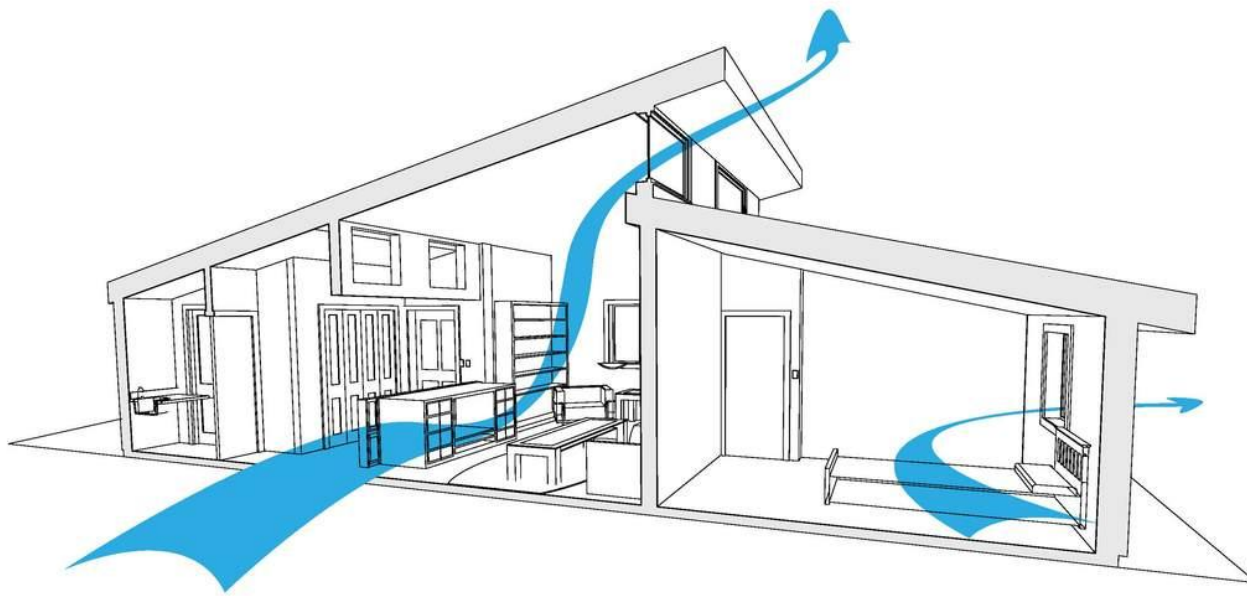
Secondary stair tower enables vertical circulation and views



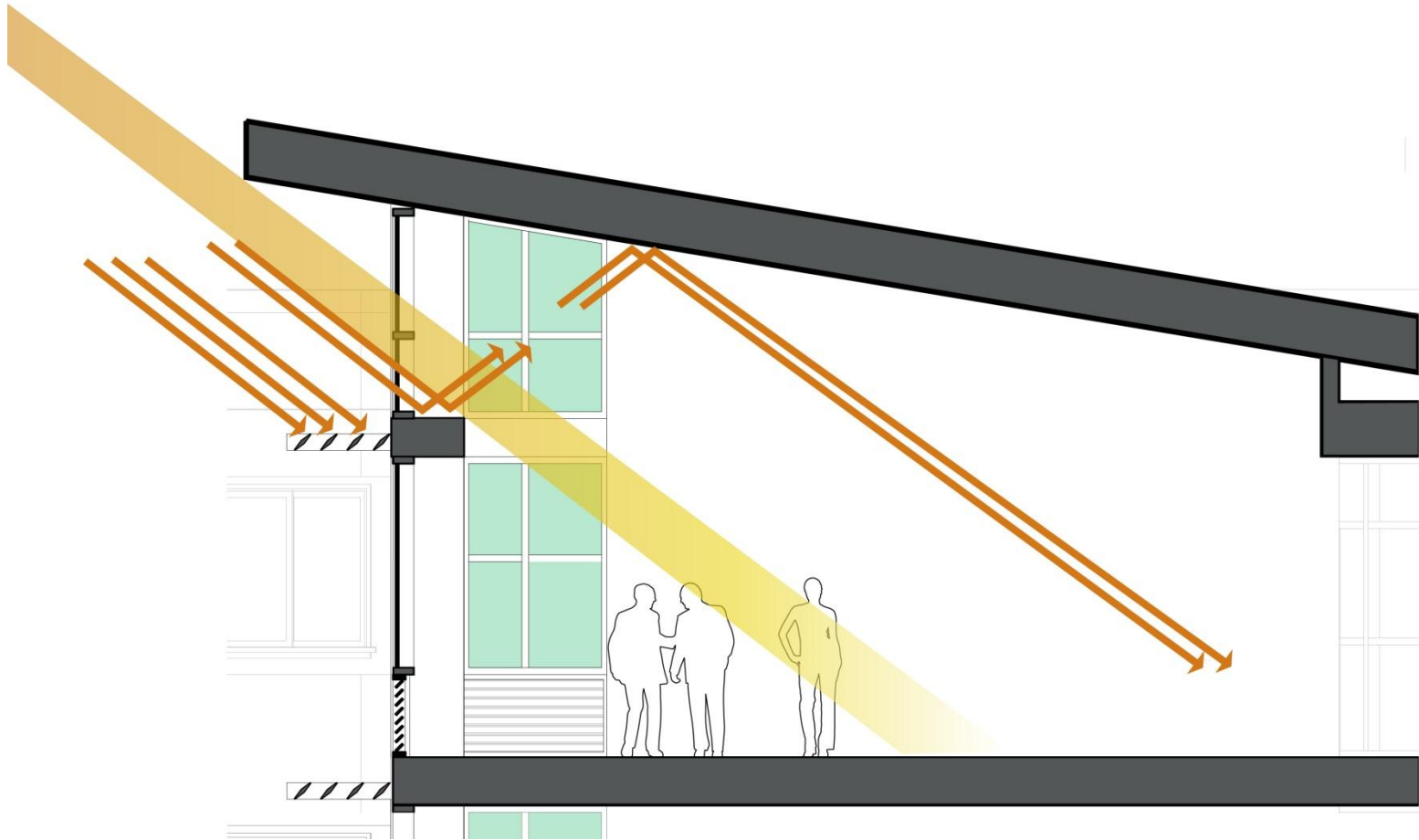
Ventilation & Lighting Diagrams



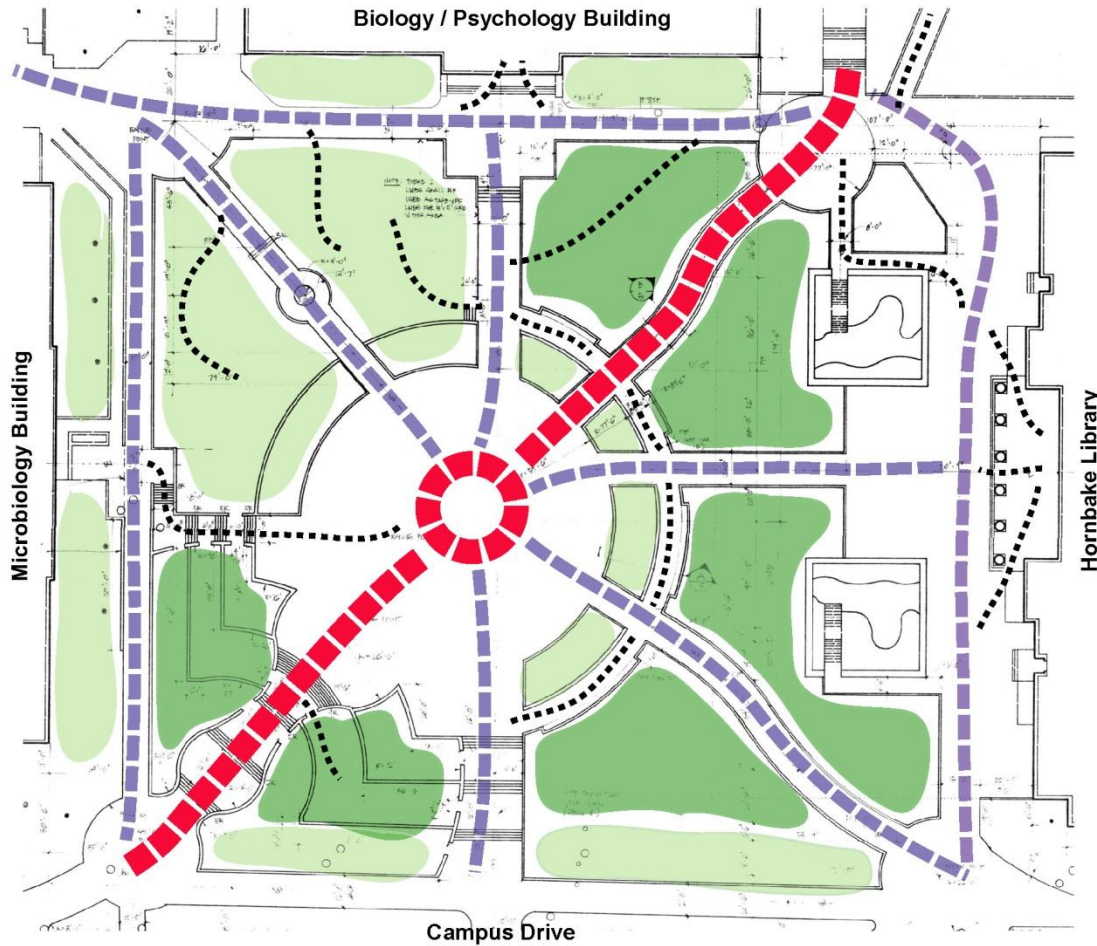
Ventilation & Lighting Diagrams









Ventilation & Lighting Diagrams



Site Analysis Diagrams



Hornbake Plaza Site Survey

-  Transition
-  Major Traffic
-  Minor Traffic
-  Individual Trips
-  Trees
-  Grass

LARC 141
University of Maryland, College Park
Dr. Shenglin Chang

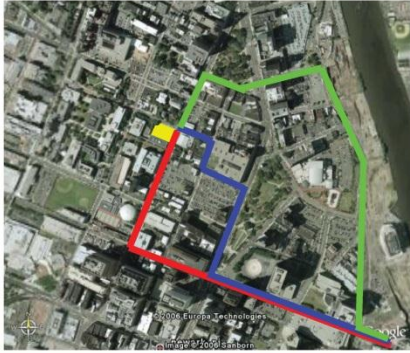
Matt Sokol
John Palmer
Fall 2003

Site Analysis Diagrams

SITE ANALYSIS

LOCATION

NEWARK, NJ
WASHINGTON STREET & BLEEKER STREET



FROM PENN STATION:

- ROUTE VIA WASHINGTON STREET
- ROUTE VIA MILITARY PARK
- ROUTE VIA WASHINGTON PARK



CAMPUS PROGRAM

RUTGERS UNIVERSITY



PROGRAM KEY:

- BATTERING / RECREATIONAL
- LIVING
- ADMINISTRATION
- EDUCATION

SEASONS/SHADOWS

SUMMER - 6/21



WINTER - 12/21



CIRCULATION

PEDESTRIAN / VEHICULAR

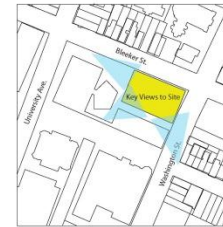
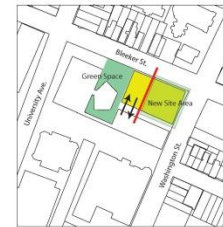


- KEY:**
- HEAVILY TRAVELED
 - MODERATELY TRAVELED
 - LIGHTLY TRAVELED
 - DIRECTION OF TRAFFIC



ACCESS / VIEWS

KEY SITE AREAS & BOUNDARIES ESTABLISHED



PROGRAM VS. FACADE

PROGRAM: MUSIC / ART / DESIGN



BRADLEY HALL

Bradley Hall consists of studios and offices that are utilized for arts and performing arts majors. Studios are located mainly along the east facade overlooking downtown Newark and the New York City skyline. The facades have a standard window design, repeated consistently on each floor.

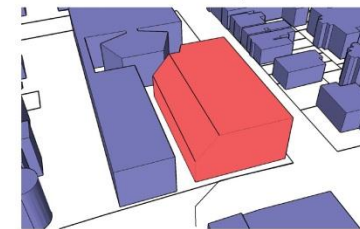


NJPAC

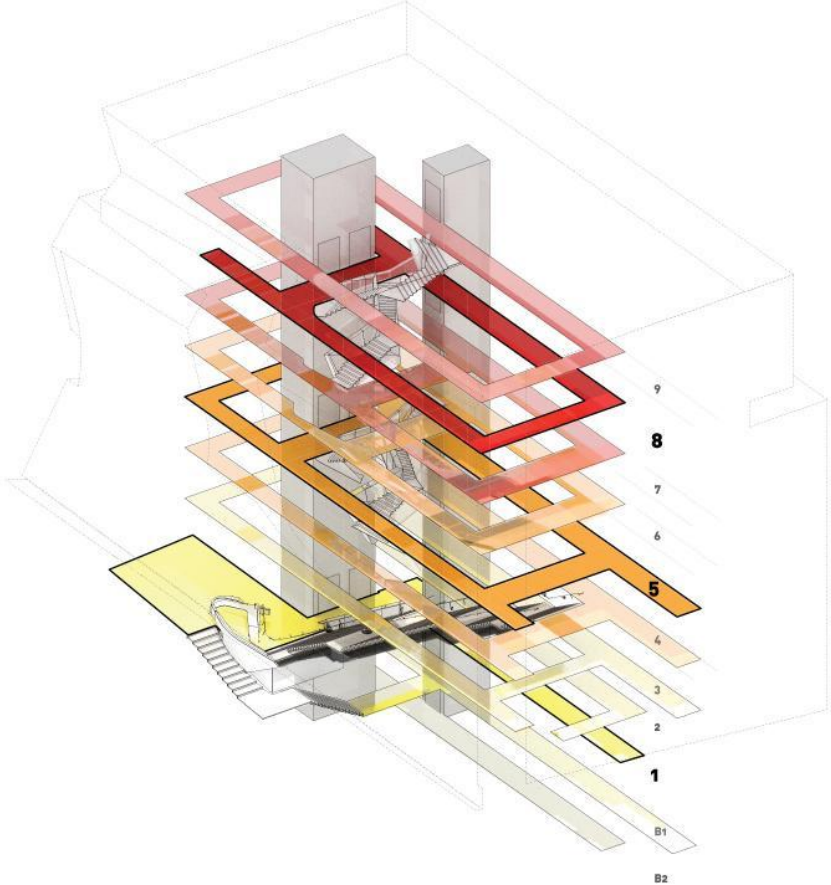
NJPAC, located in downtown Newark, holds several large performing art theaters, which can be used for various types of concerts or plays. The exterior consists of a mixture of brick and glass, arranged in a specific order, allowing ample amounts of light into gathering spaces.

ZONING

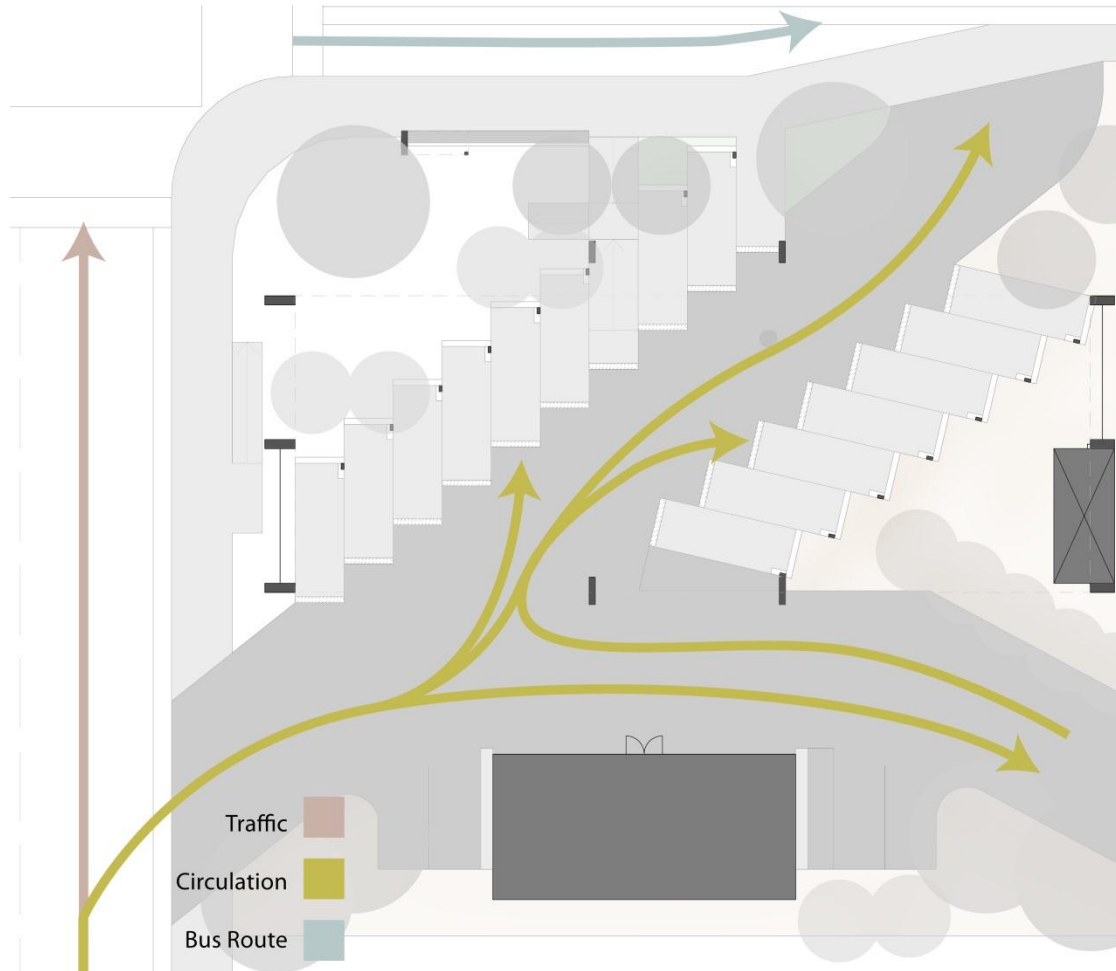
EXTRUDED MASS BASED ON CODE REQUIREMENTS



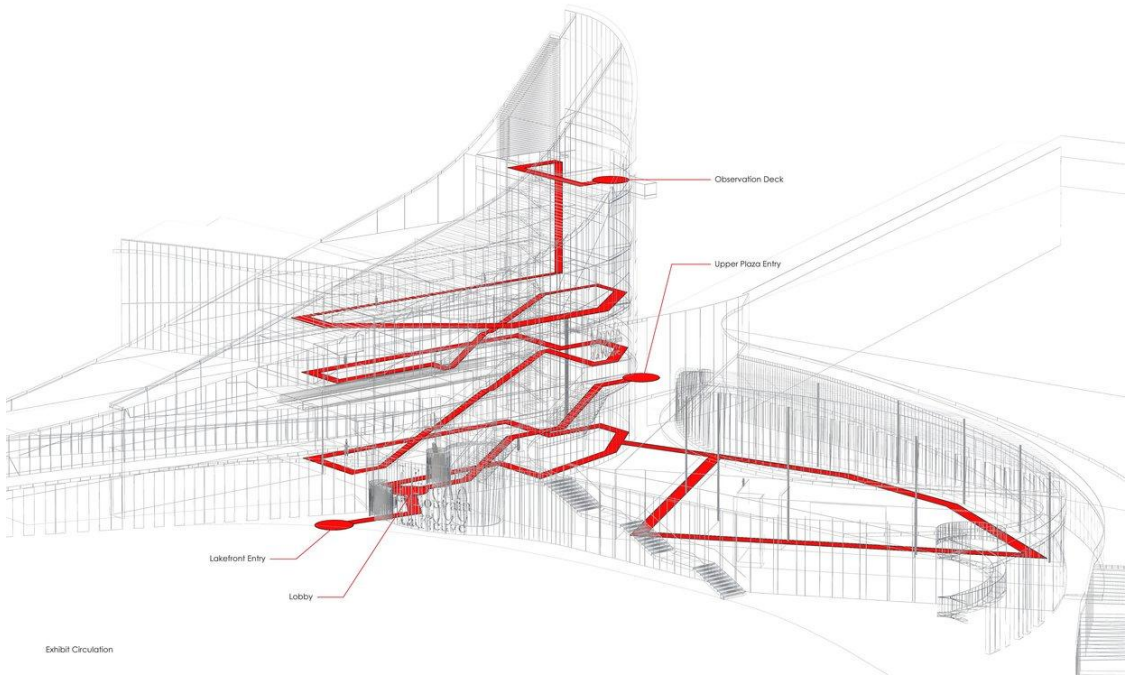
Circulation Diagrams



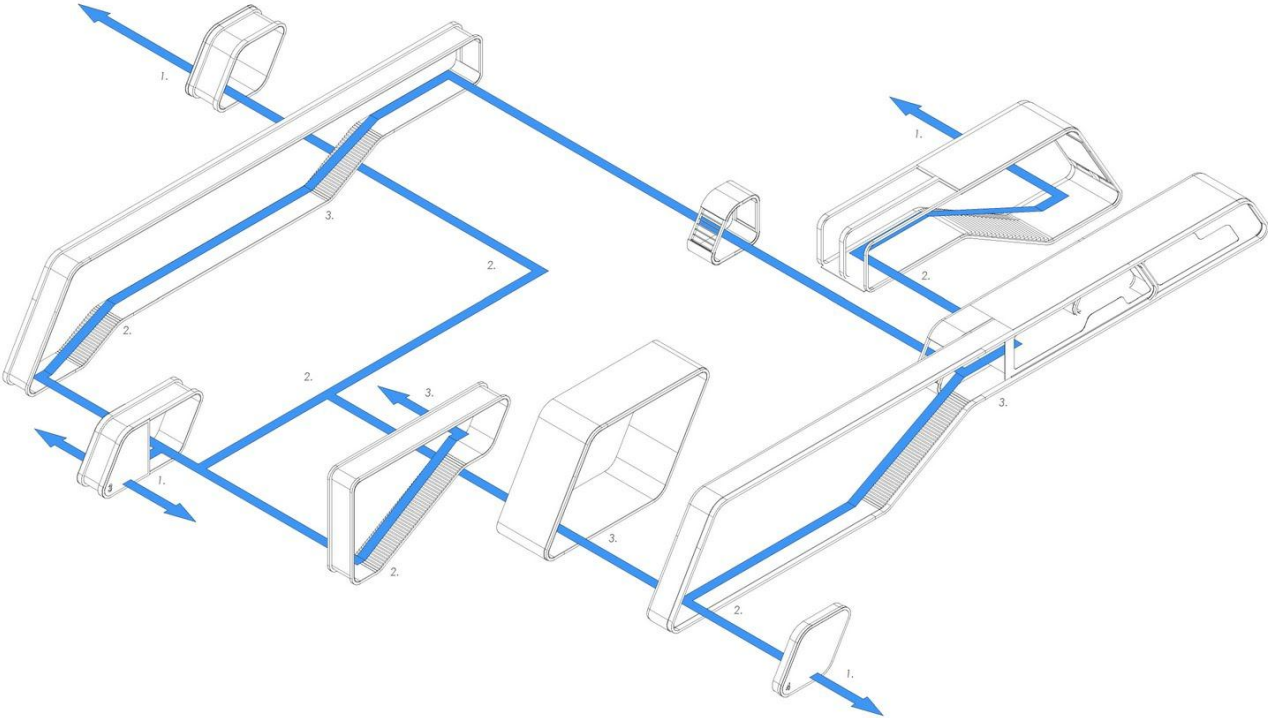
Circulation Diagrams



Circulation Diagrams

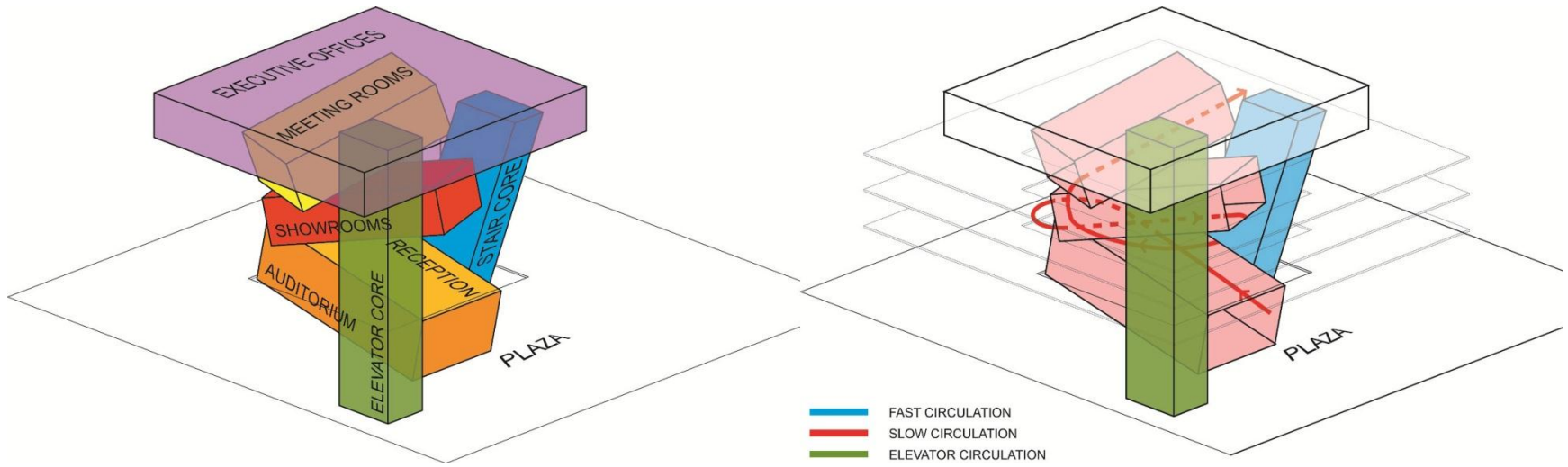


Circulation Diagrams

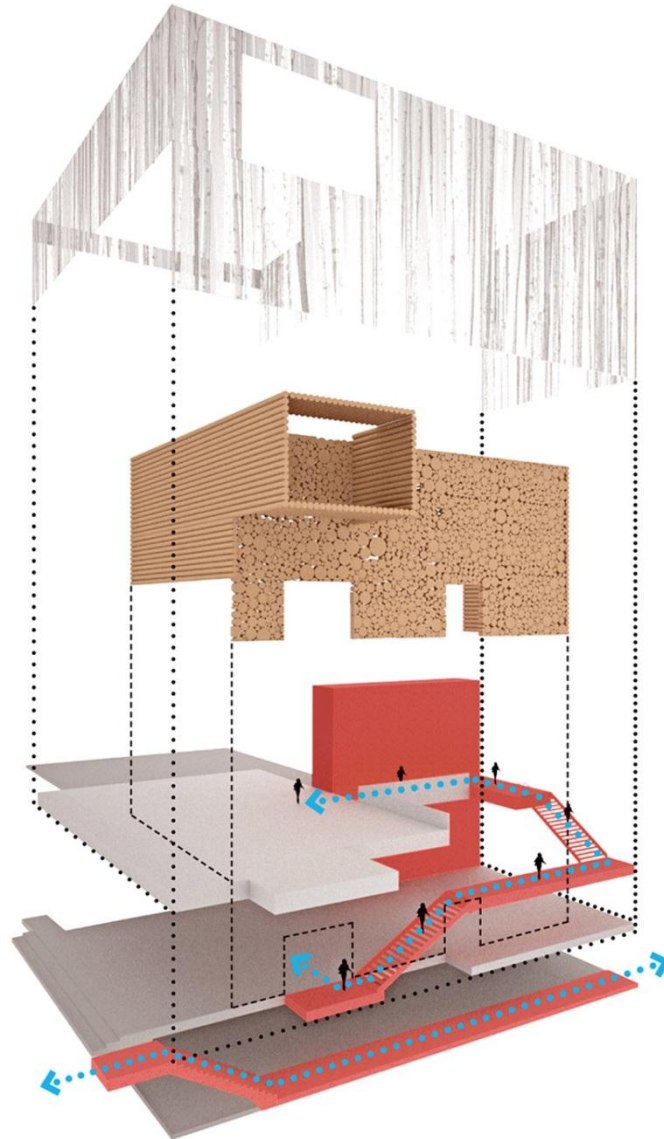


Program Circulation Sequence

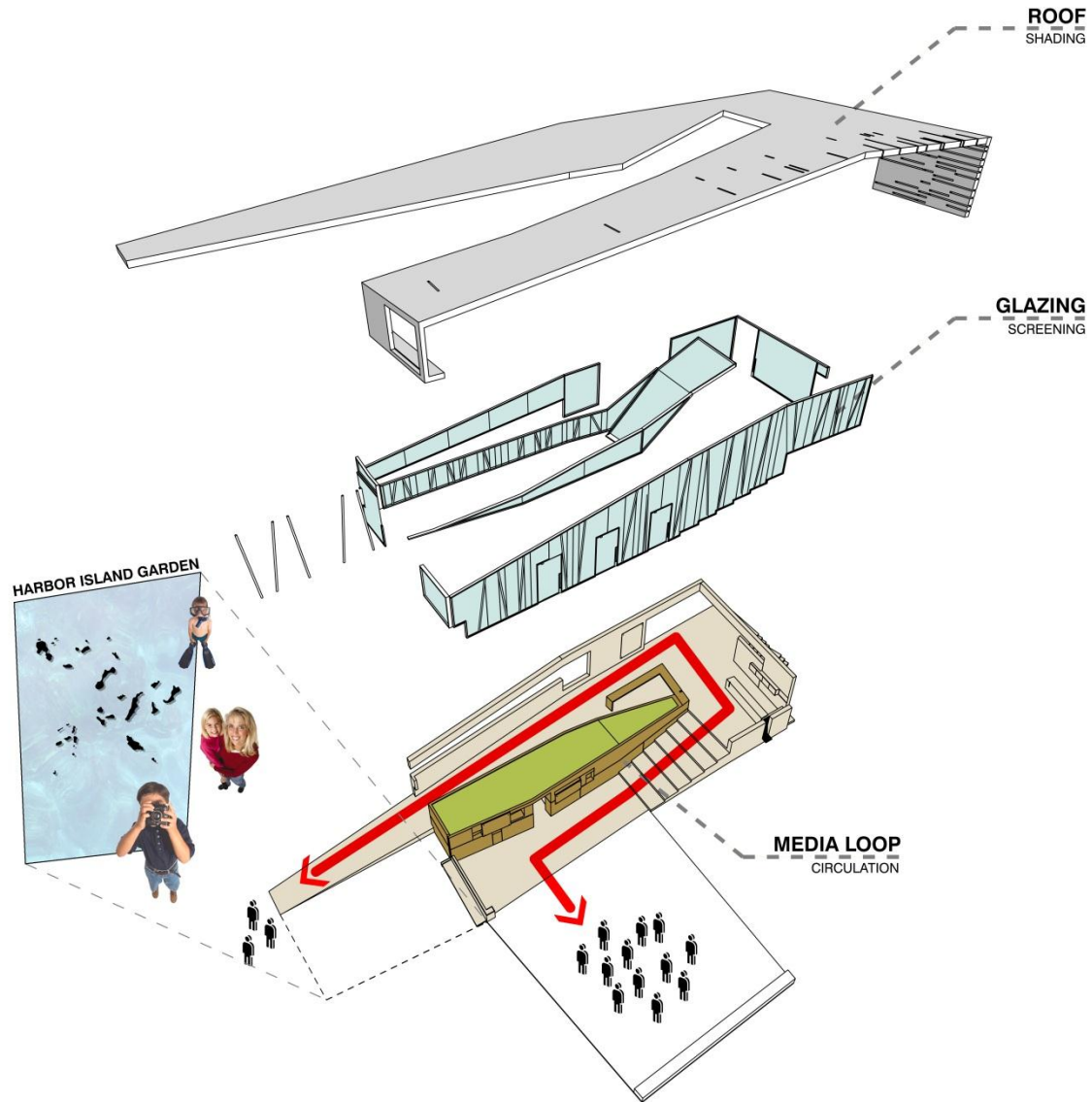
Circulation Diagrams



Exploded Axonometric Diagram



Exploded Axonometric Diagram



Exploded Axonometric Diagram

