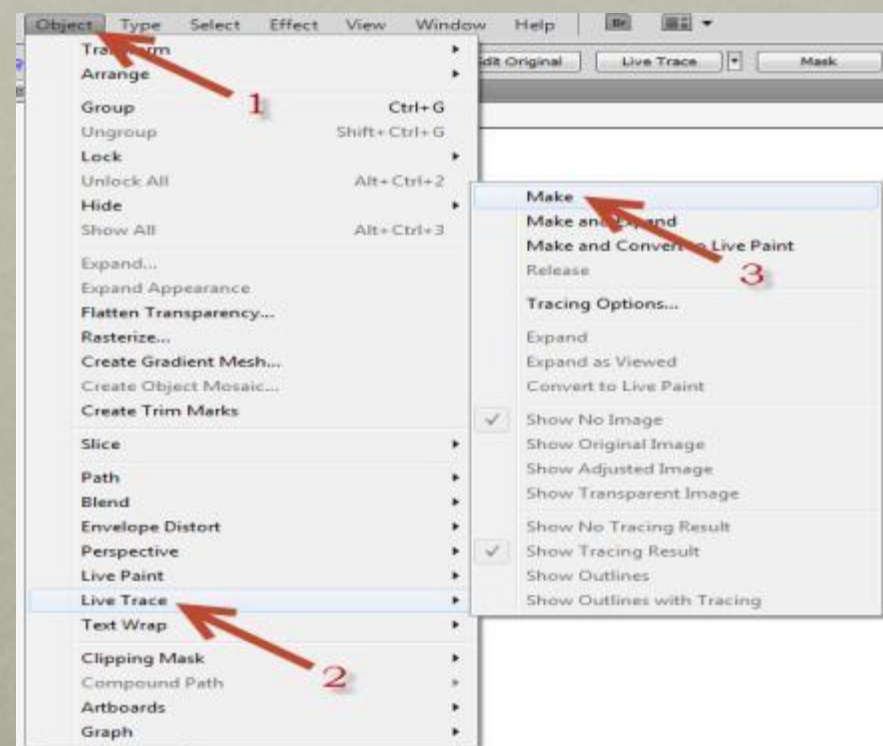


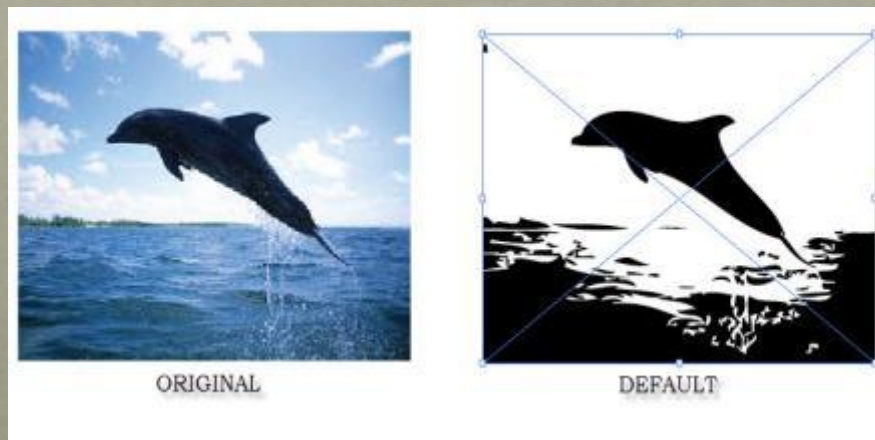
Live Trace

The command live trace is a powerful process that really gives the artist freedom to digitally experiment with an type of drawings.

Click the image > Object menu > Scroll down to Live trace > Click Make



1.OBJECT 2.LIVE TRACE 3.MAKE

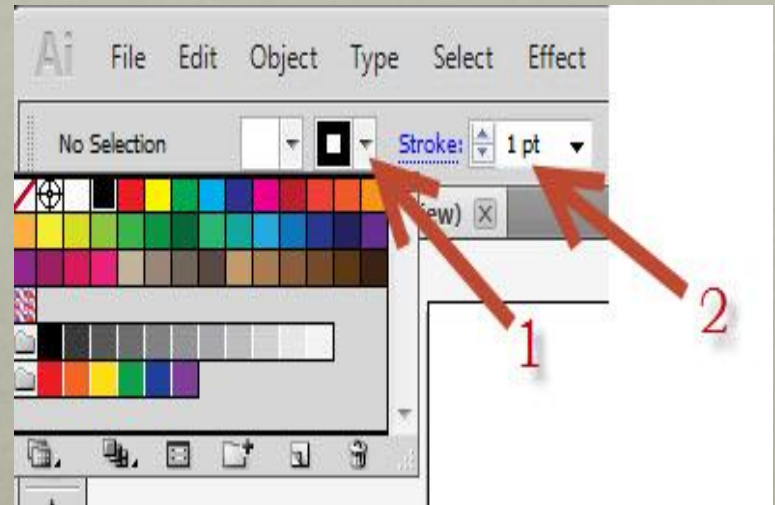


YOU CAN CHANGE THE WAY THE IMAGE MAY LOOKS.

Stroke Panel

A stroke can be used to show the visible outline of an object, path or an edge of a live paint group. Using the stroke panel you can control the width and color of a stroke.

Click stroke icon to change the color >
Click stroke to change line weight



1. STROKE COLOR 2. LINE WEIGHT



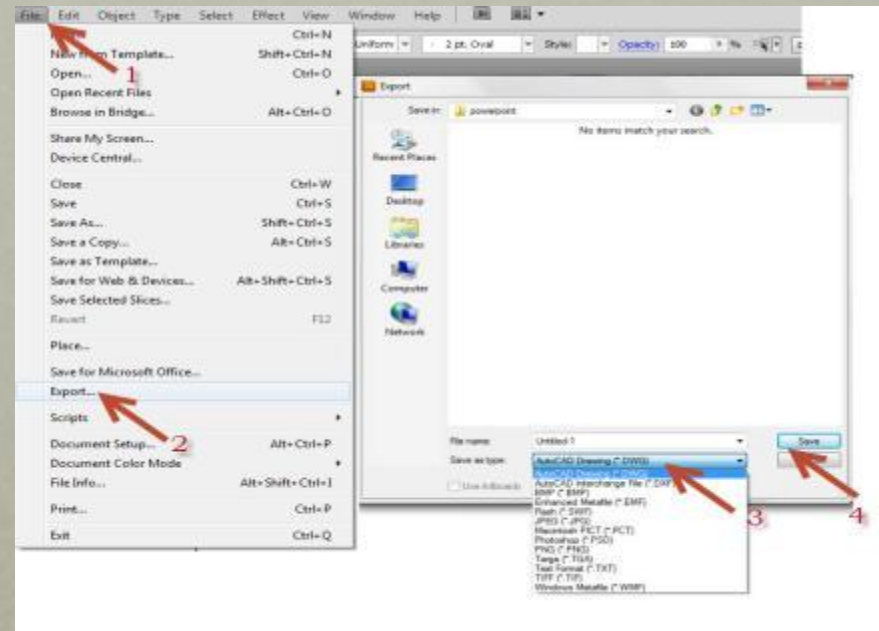
1. COLOR 2. SELECT LINES, LINE WEIGHT AND ALIGNMENT

Export & Import

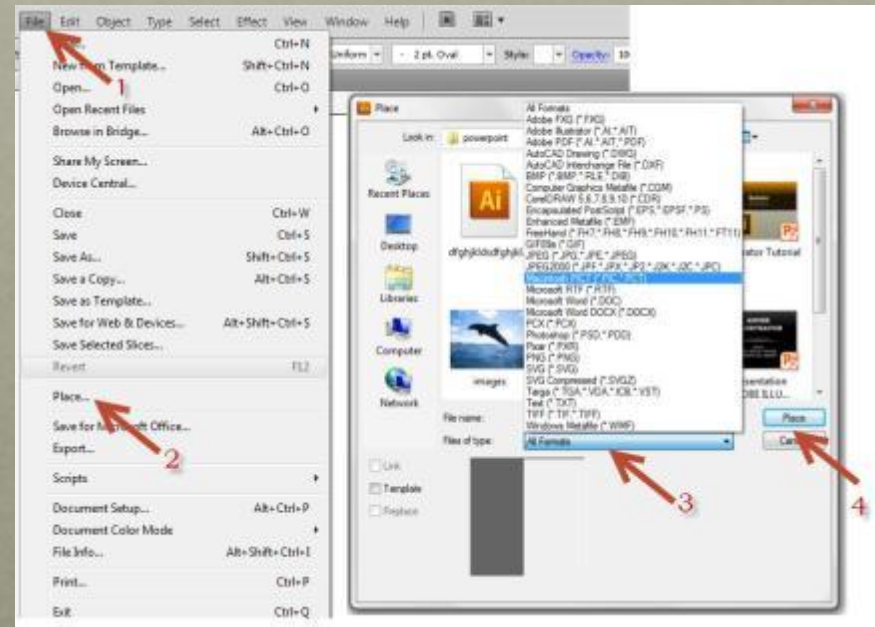
The export and import command helps you in several ways. Export is used to convert files from adobe illustrator into an Autocad drawing or even a JPEG. The command import (place) is used to place different type of files into adobe illustrator.

Click file > Export > Click on the type of file > Save

Click file > Place > Click on the type of file > Save



1.FILE 2.EXPORT 3.FILE TYPE 4.CLICK SAVE



1.FILE 2.PLACE 3.FILE TYPE 4.CLICK PLACE