



SUBJECT

BUILDING TECHNOLOGY I

assignment D_case study house framing

DATE

FALL 2012

PROFESSOR

MONTGOMERY



CASE STUDY HOUSE

professor Montgomery

platform framing

arch 1130



CASE STUDY HOUSE

professor Montgomery

wall framing + sheathing

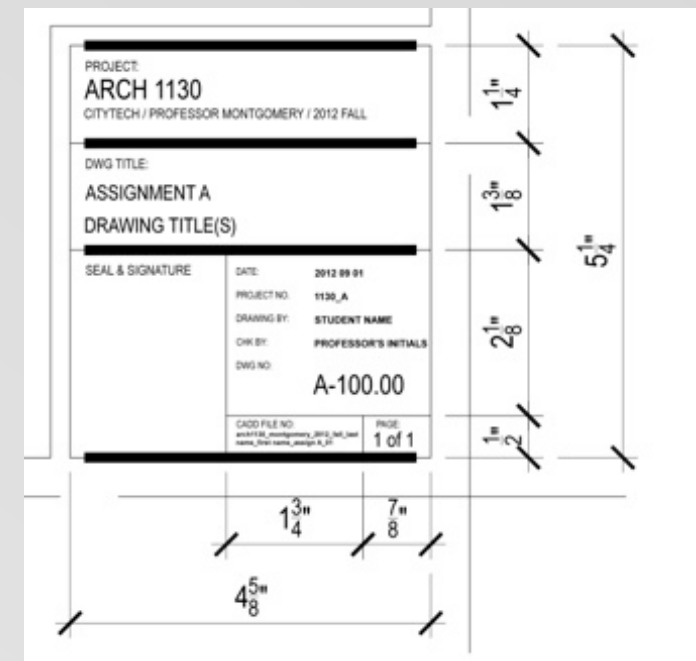
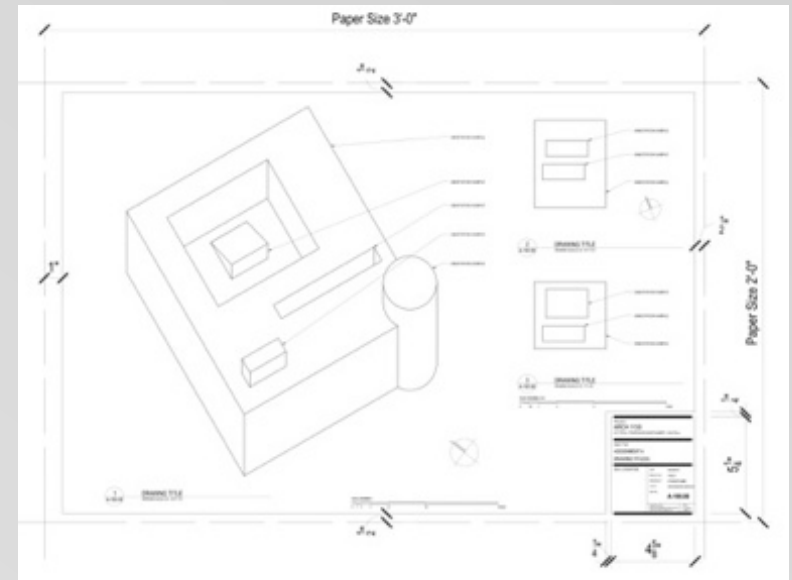
arch 1130

assignment D

CASE STUDY HOUSING FRAMING

DUE: NOV 5, 2012

- * 24" x 36" vellum sheet following title block standard
- * emphasis on quality of draftsmanship:
 - i. accuracy of dimensions
 - ii. standard conventions for elements (see Ching Arch Graphics)
 - iii. line weight (see Ching Arch Graphics)
 - iv. include a graphic scale and north arrow for all views (where appropriate)
- * drawings:
 - i. axon views (2 birds eye views):
 1. of overall building footprint with first floor platform framing $1/4"=1'-0"$
 2. of overall building footprint with additional framing including on half of primary roof $1/4"=1'-0"$



assignment D

CASE STUDY FOUNDATION

DUE: NOV 5, 2012

- * ASSIGNMENT SUBMISSION REQUIREMENTS:
 - * scan original drawings w/ wide format scanners on 8th floor.
 - * place white bond paper 24"x 36" on top of original vellum drawing when inserting drawing through scanner.
 - * adjust density as need to pick up all line work (seek CLT assistance to ensure highest quality scan.
 - * upload to blackboard one 24"x 36" jpeg file at 150 dpi resolution per board
 - * submit original drawing in class (both the jpeg and original must be submitted before a grade will be issued.)
 - * all files submitted must follow this naming standard:
Montgomery_F_12_first name-last name (letter of assignment +drawing number).jpg (See Archiving Guidelines for more info)
 - * example file name: Montgomery_F_12_george-smith(C_01).jpg
 - * files not conforming to department standards will not be graded.

