



SUBJECT

# BUILDING TECHNOLOGY I

## assignment A\_documenting space

DATE

FALL 2013

PROFESSOR

MONTGOMERY

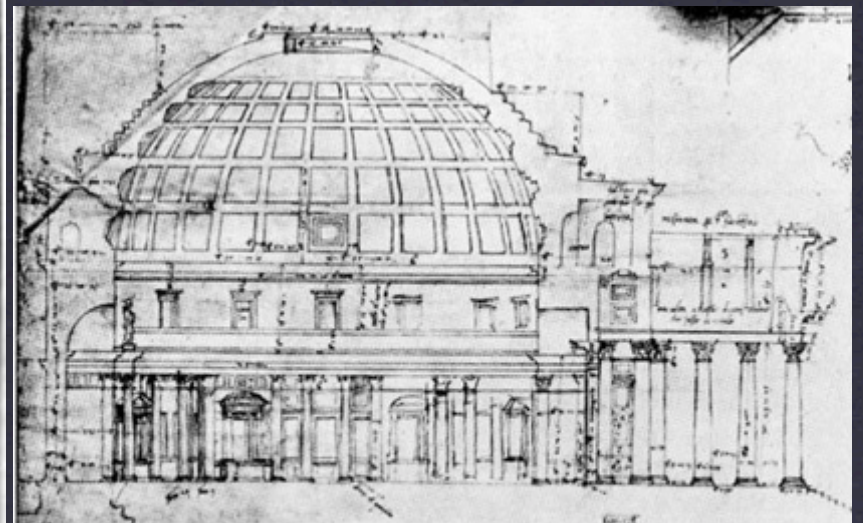
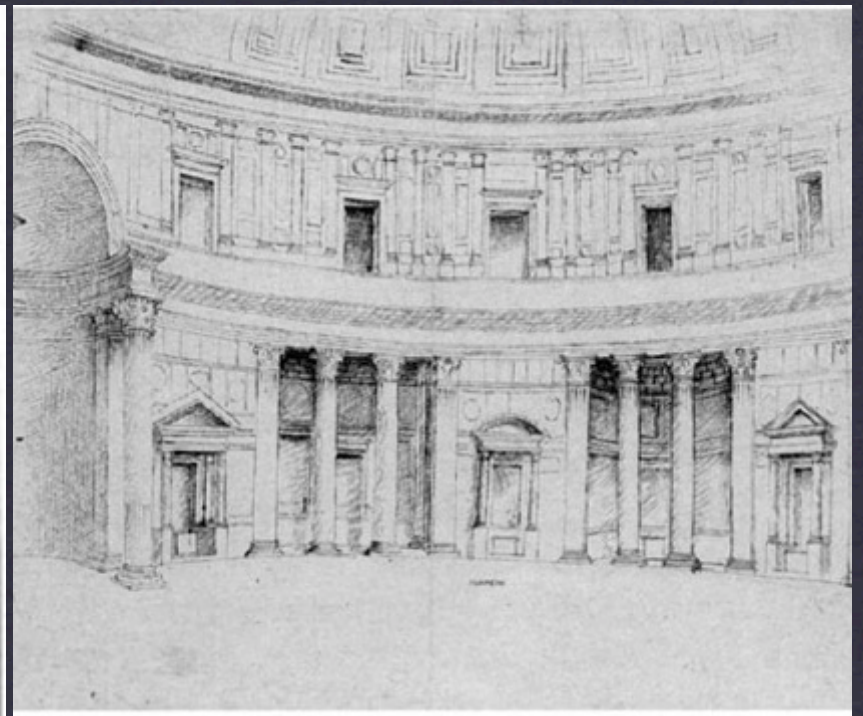
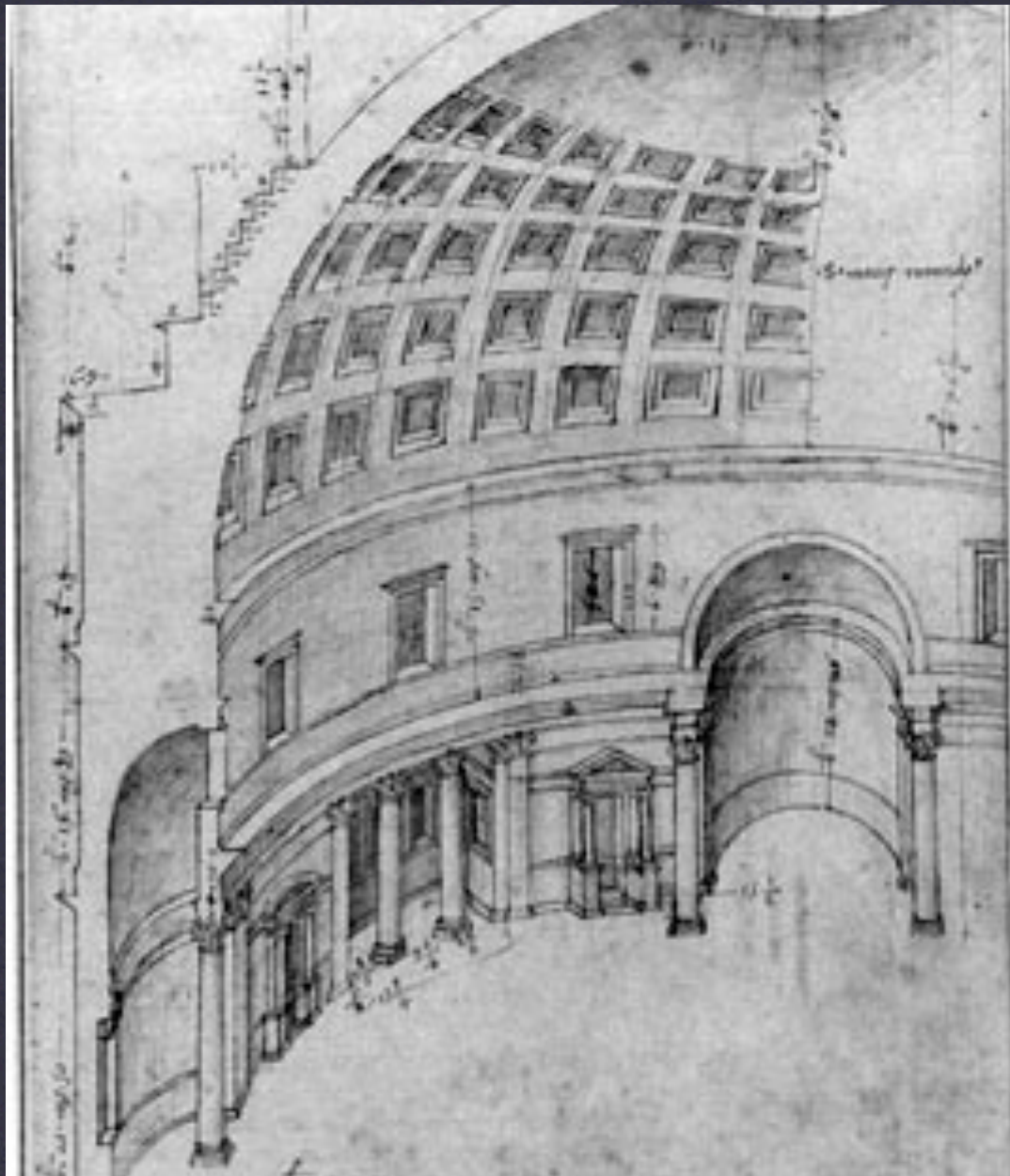


# DOCUMENTING SPACE

professor Montgomery

# the Pantheon, Rome

arch 1130

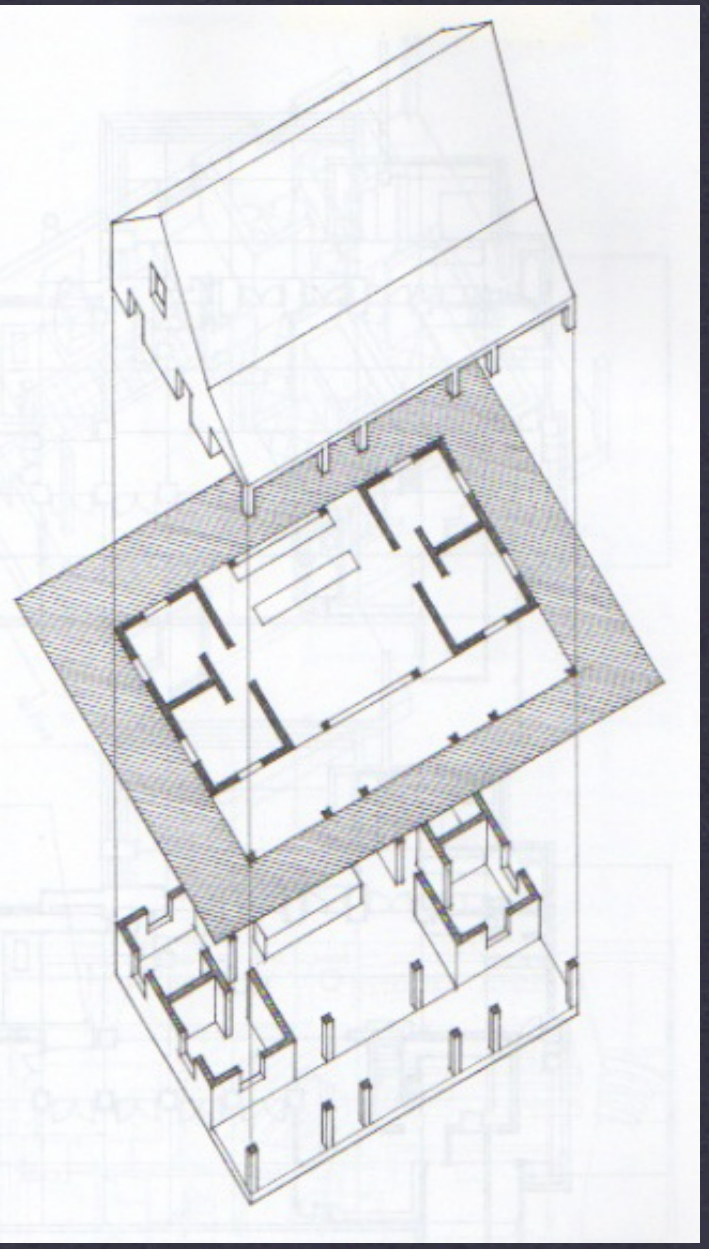
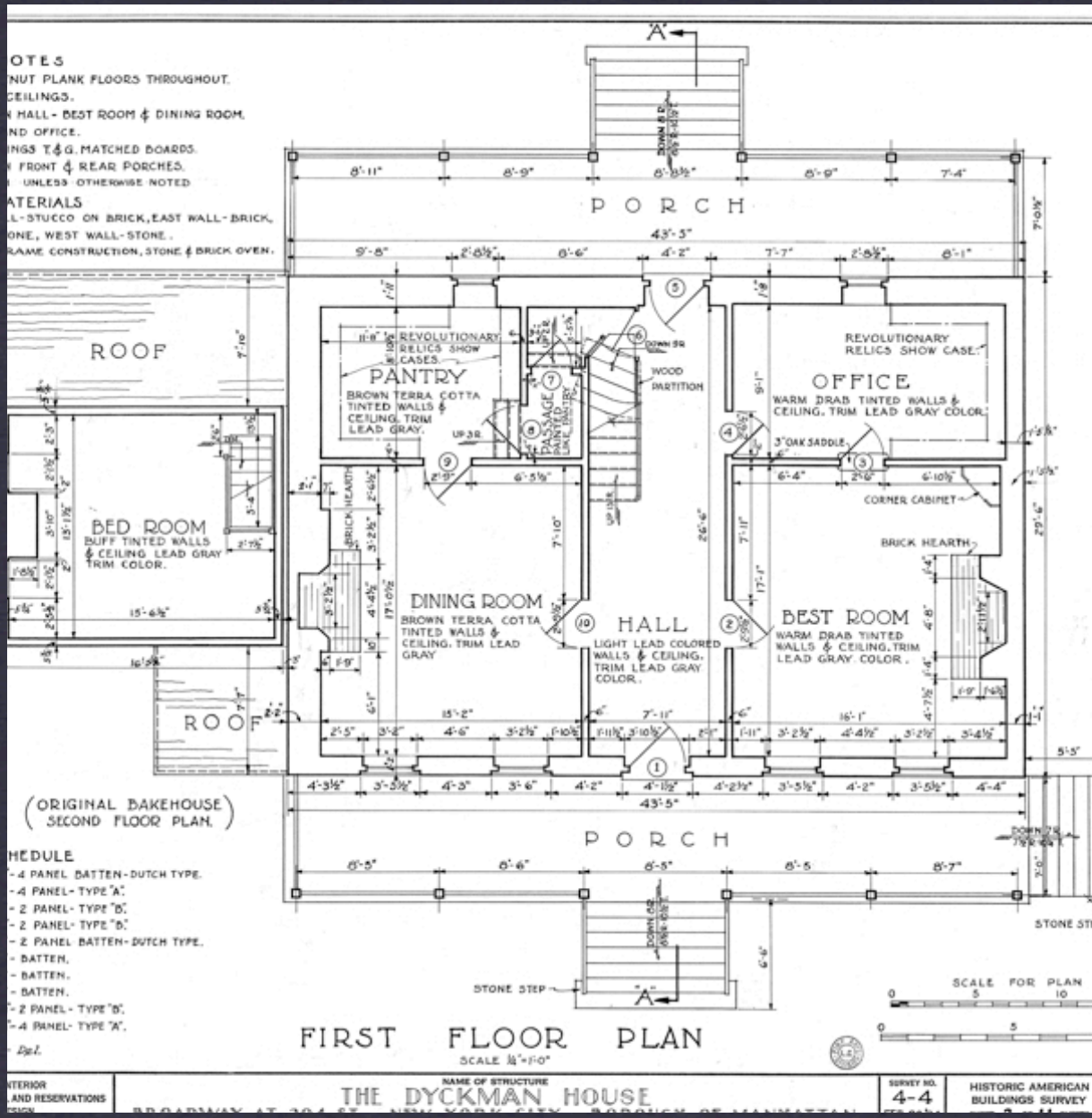


# MEASUREMENT & OBSERVATION

professor Montgomery

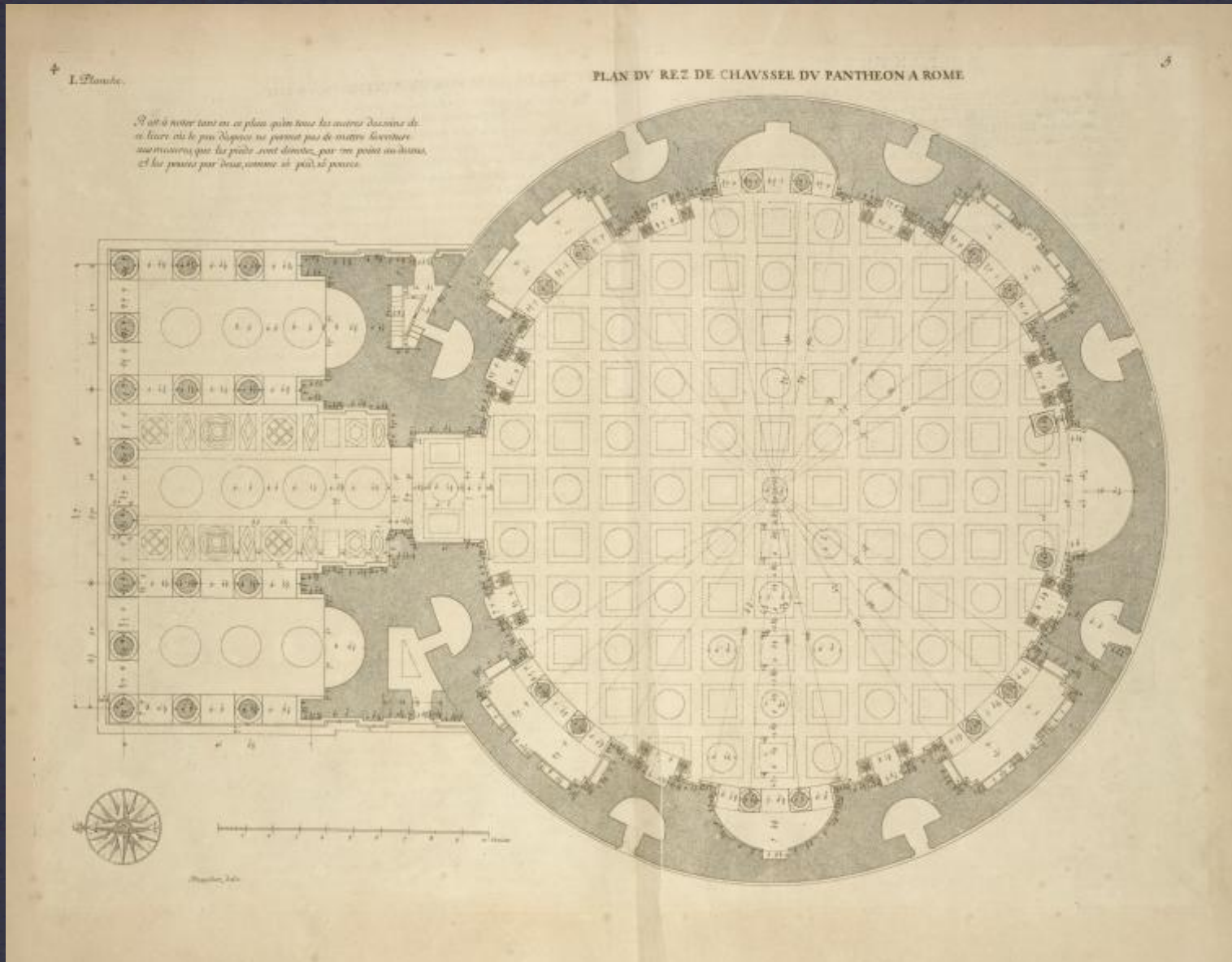
care + technique

arch 1130



**DESCRIBING SPACE**  
 professor Montgomery

**plans**  
 arch 1130

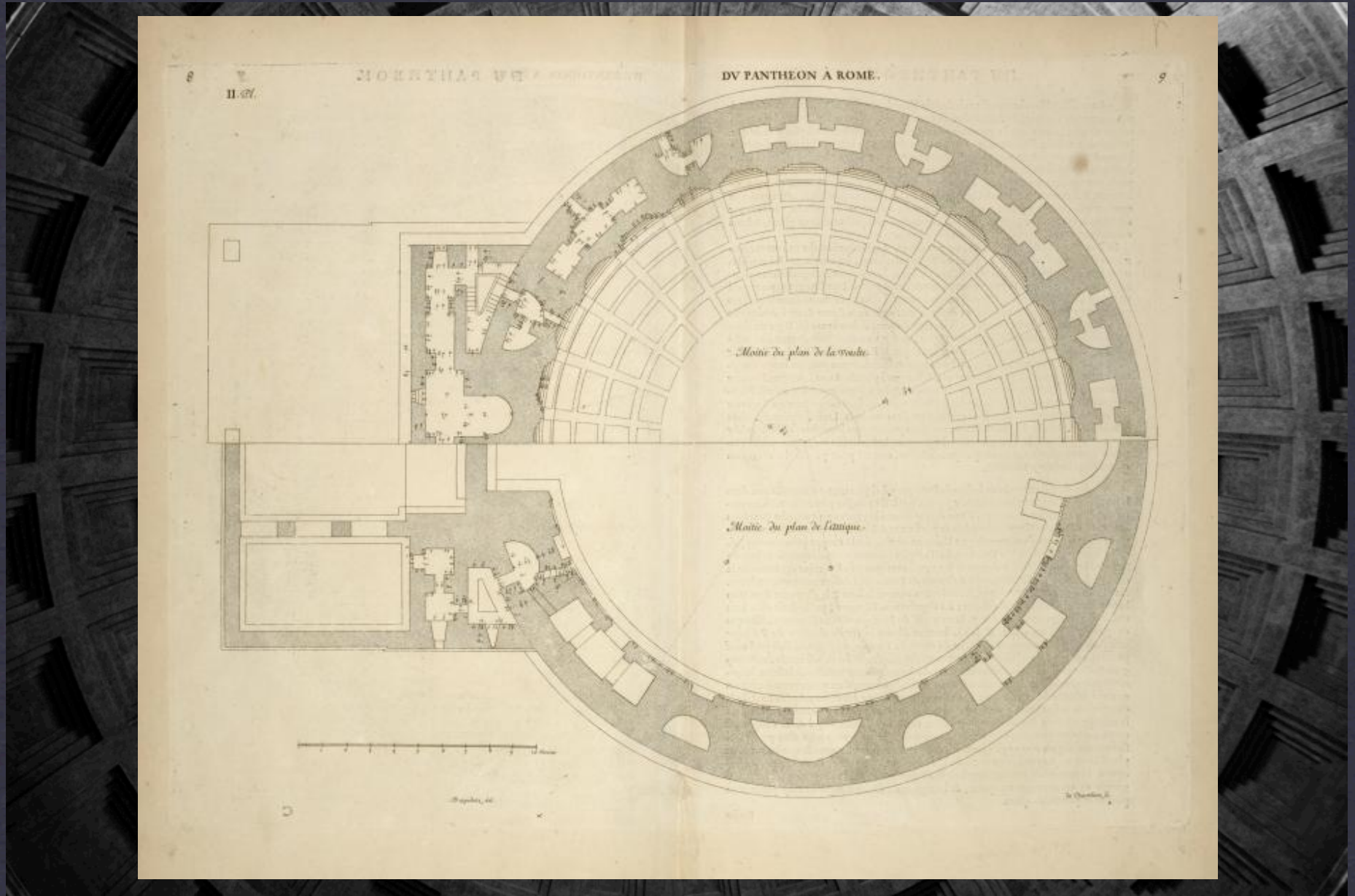


# DOCUMENTING SPACE

professor Montgomery

floor plans

arch 1130

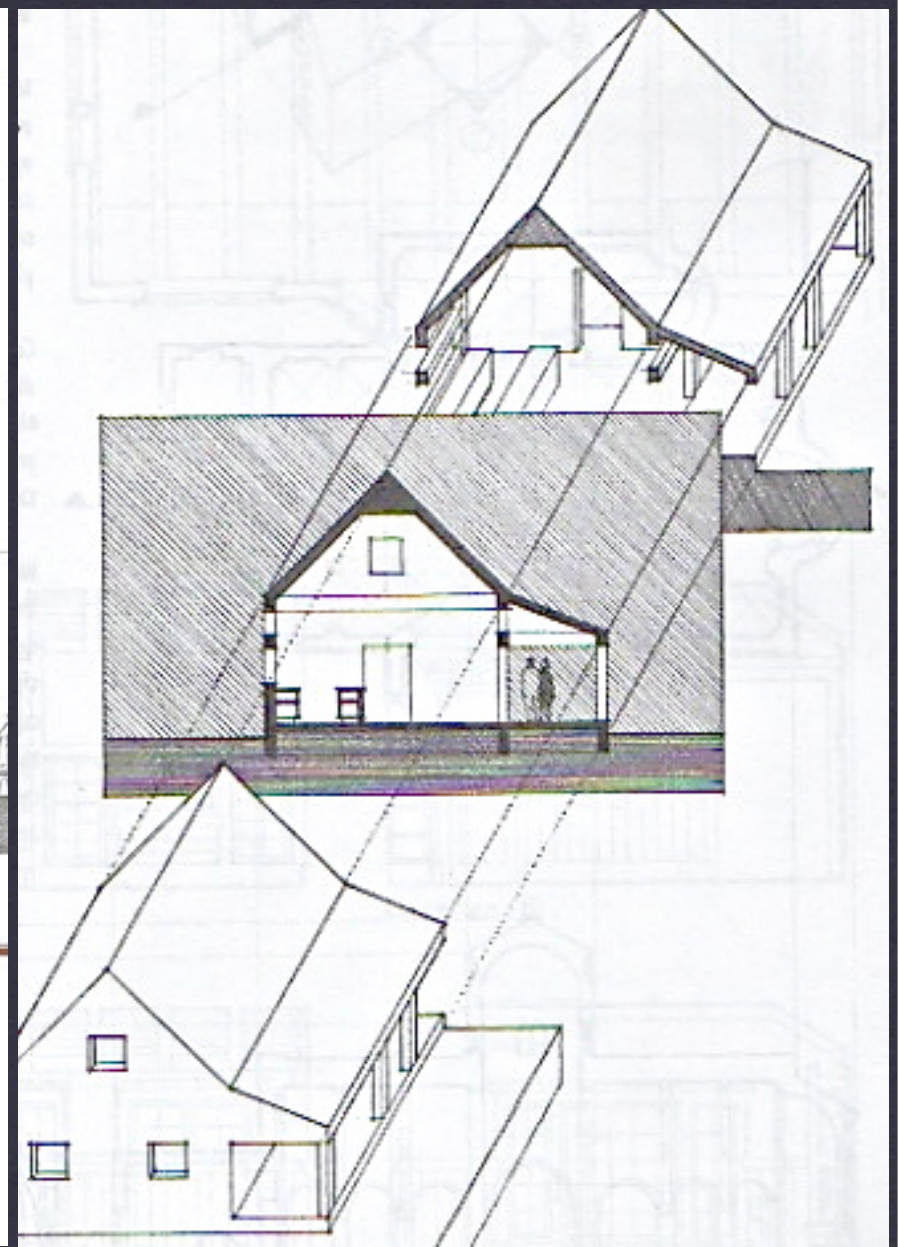
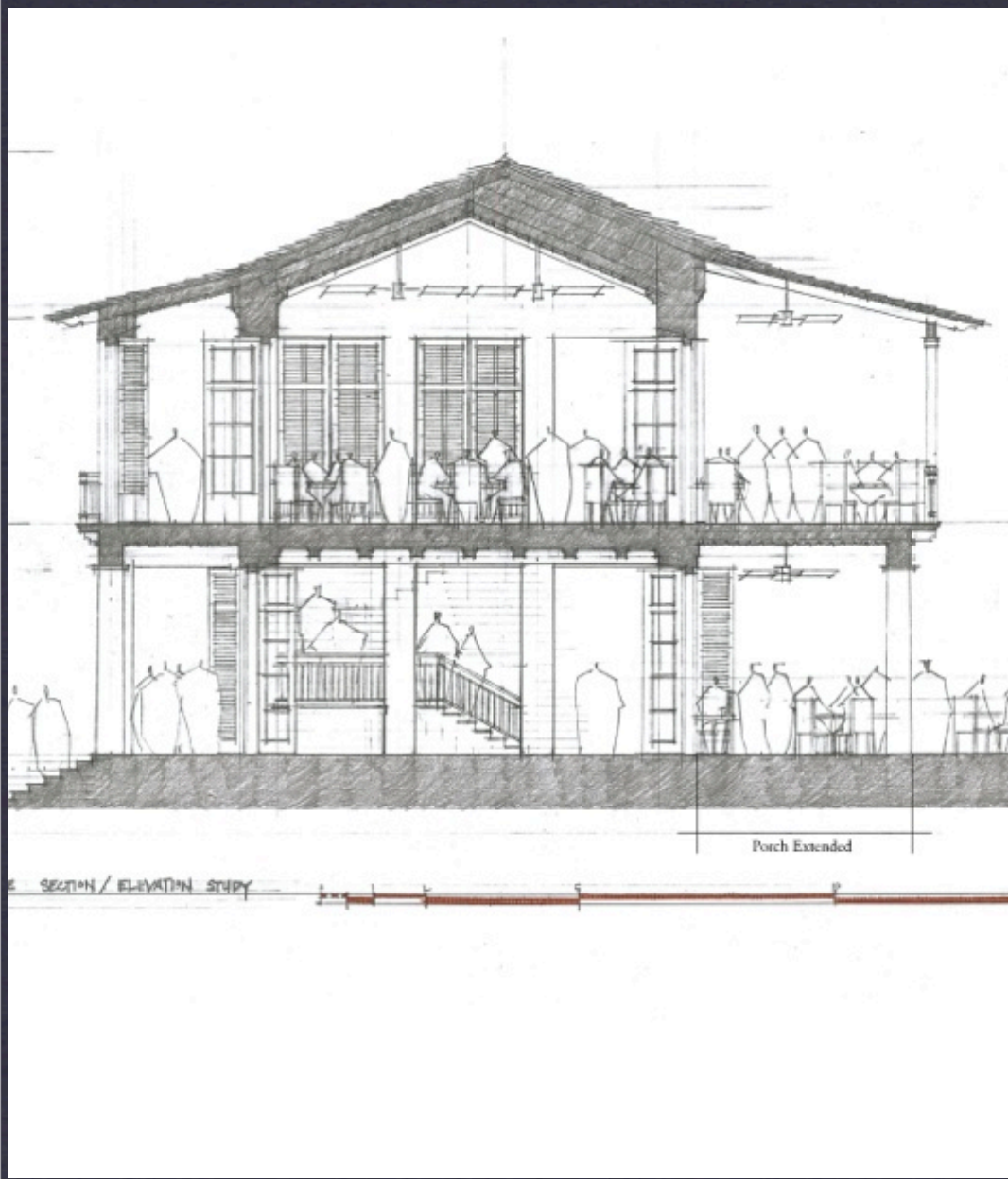


# DOCUMENTING SPACE

professor Montgomery

reflected ceiling plans

arch 1130

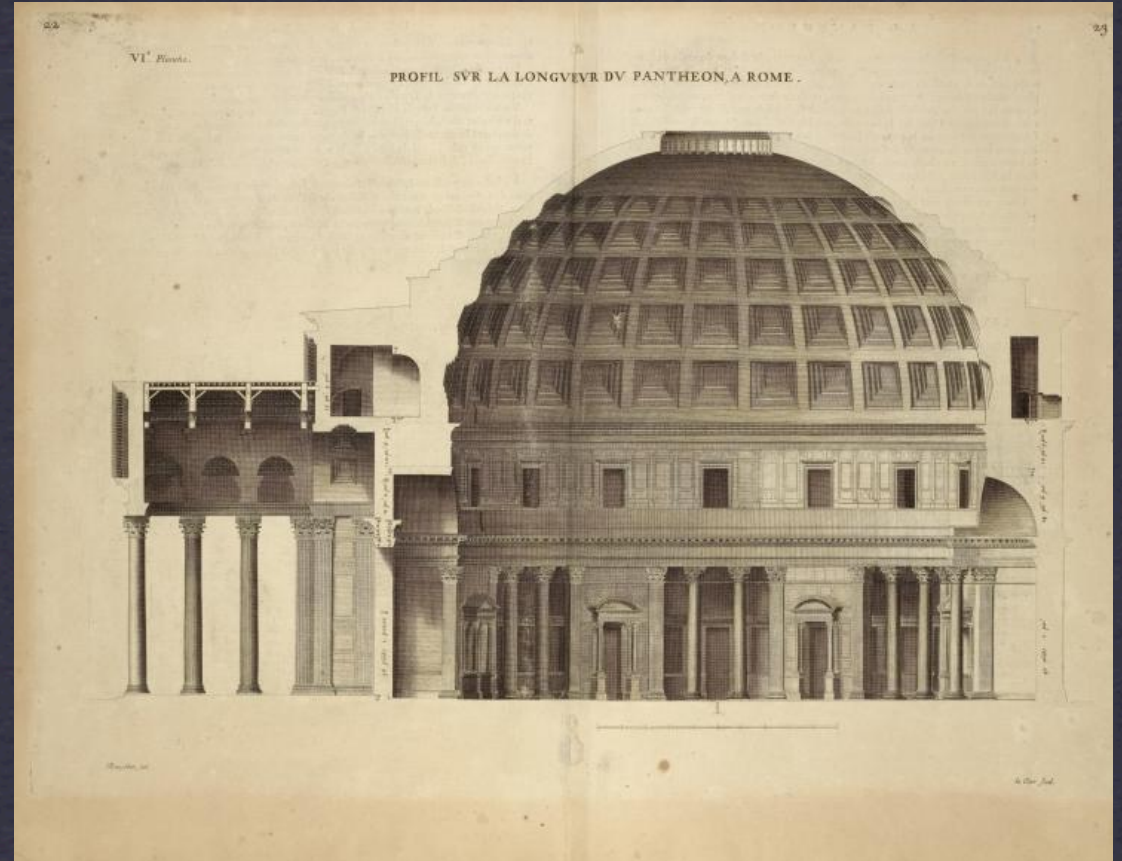
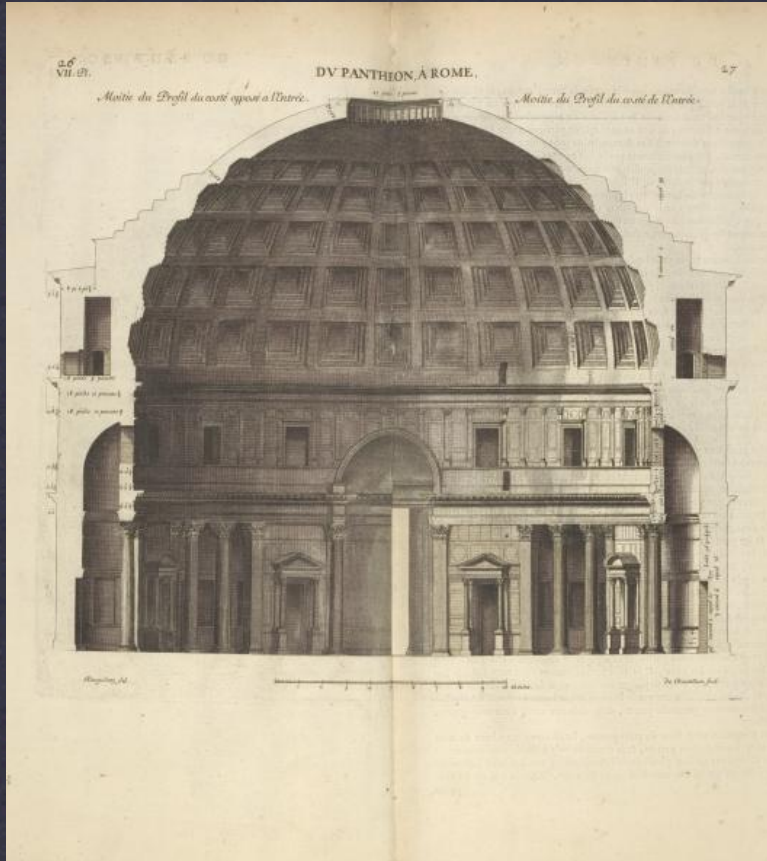


# DESCRIBING SPACE

professor Montgomery

sections

arch 1130

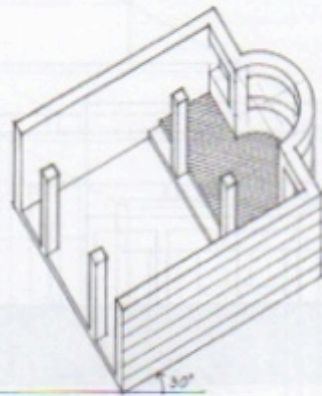
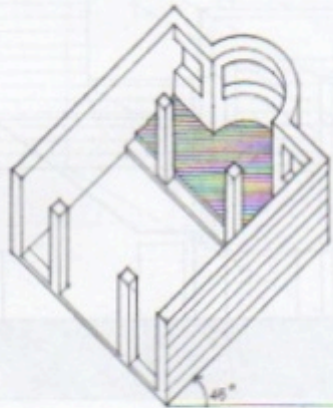
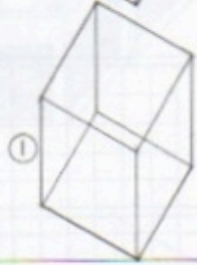
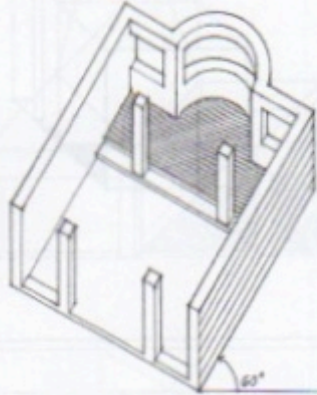
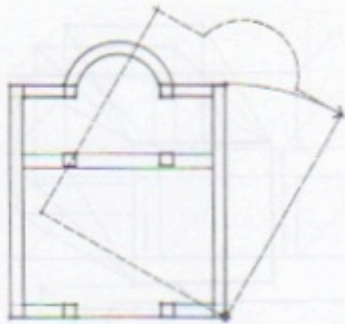


**DOCUMENTING SPACE**  
professor Montgomery

**cross sections**  
arch 1130



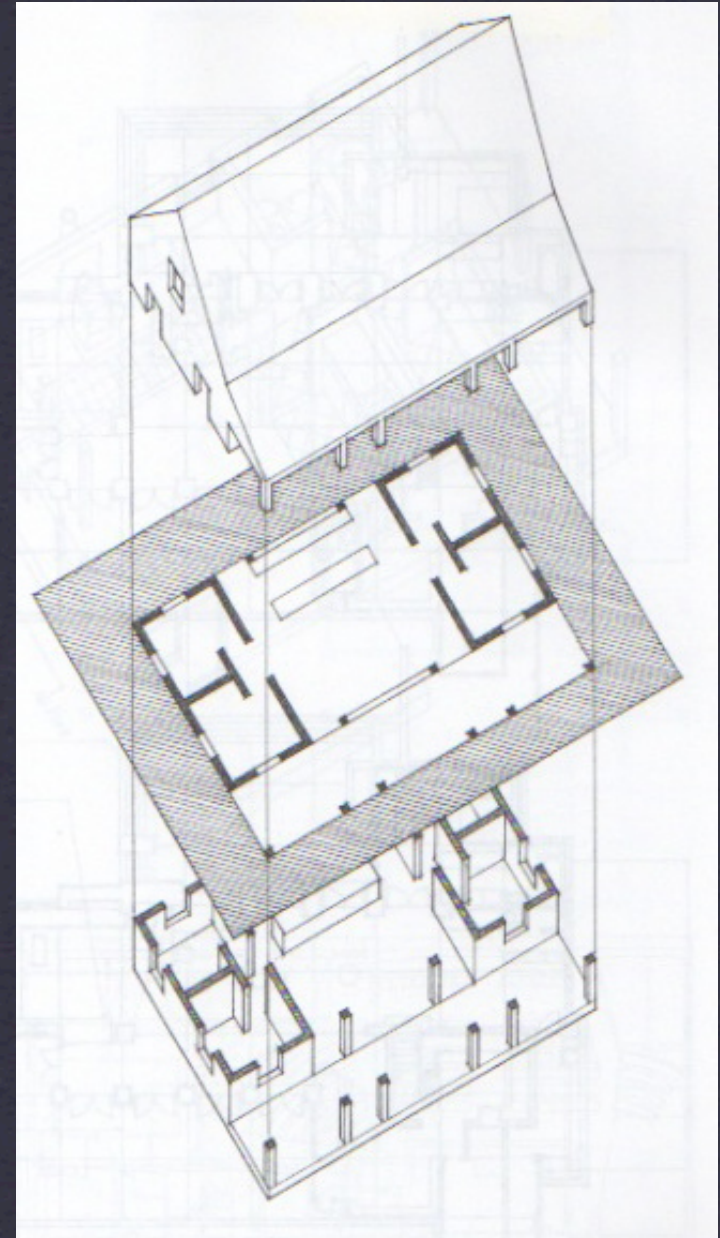
## PLAN OBLIQUES



A plan oblique orients a horizontal plane or plan view parallel to the picture plane and therefore reveals its true shape and size. We usually rotate the plan view so that both sets of vertical planes can receive different degrees of emphasis. In a cases, however, plan obliques offer a higher point of view into an interior than isometric drawings and the primary emphasis remains on the horizontal set of planes.

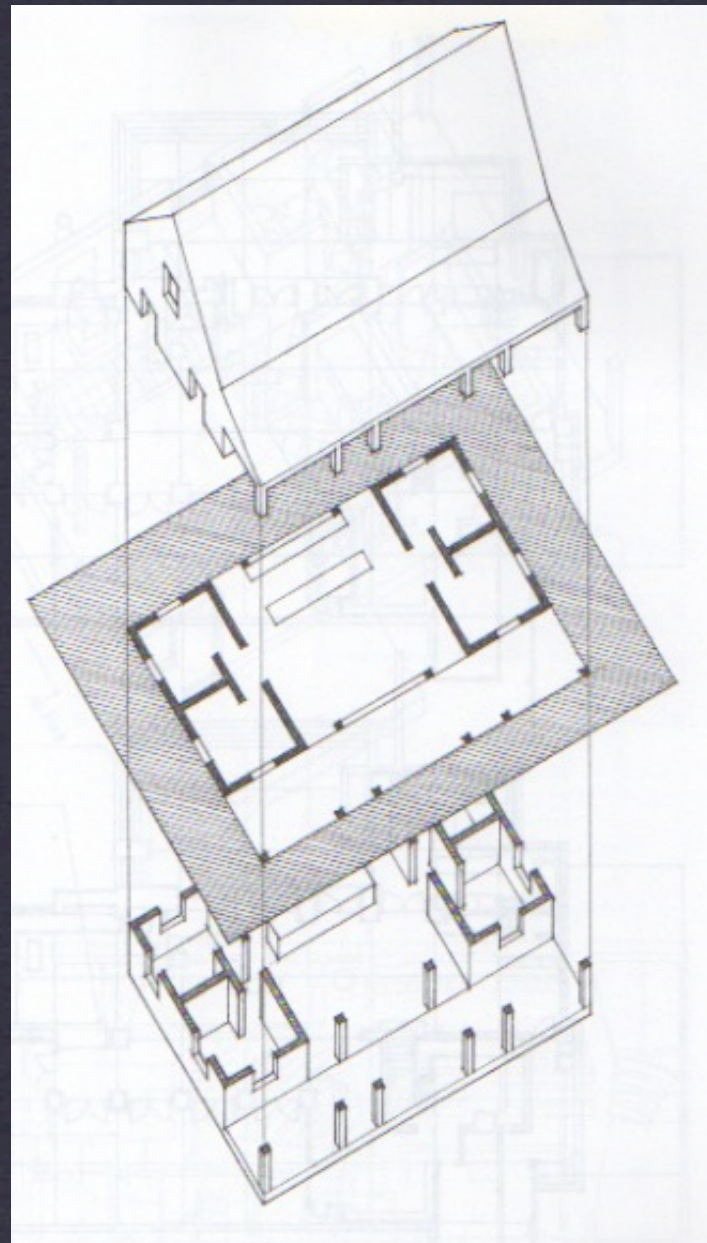
In drafting with triangles, we rotate the plan 30°, 45°, or 60° from a horizontal on the drawing surface. In freehand sketches we need not be as precise, but once we establish the angle of rotation, we should apply it consistently. We should remember that the angle we use determines the apparent size and shape of the vertical planes.

Once the plan is rotated to the desired angle, we draw the receding lines as verticals on the drawing surface. We can draw these verticals at the same scale as the plan view or foreshorten them if their lengths appear exaggerated.

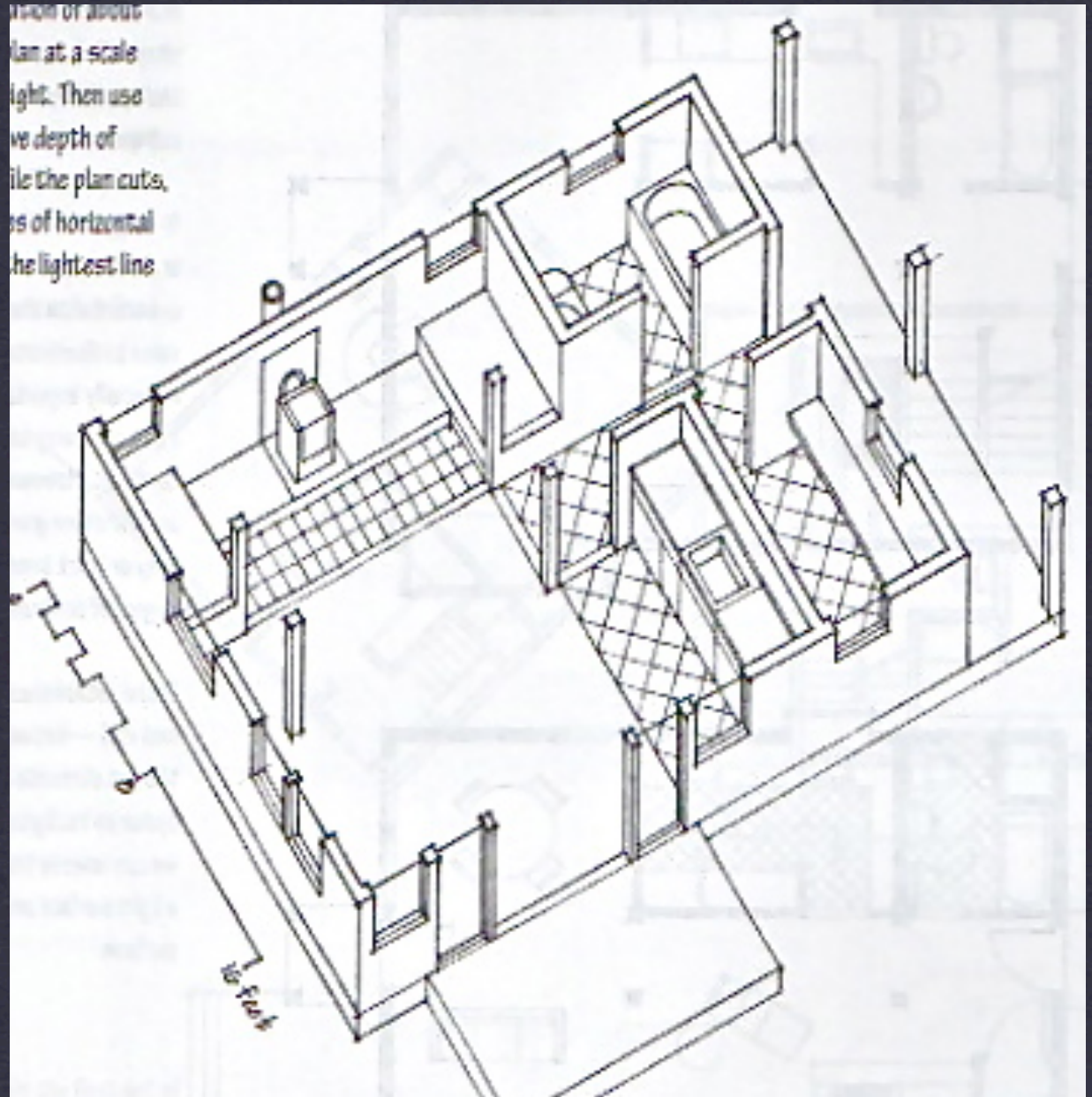


**DESCRIBING SPACE**  
professor Montgomery

**axons**  
arch 1130



...tion of about  
...lan at a scale  
...ight. Then use  
...ve depth of  
...ile the plan cuts,  
...s of horizontal  
...he lightest line

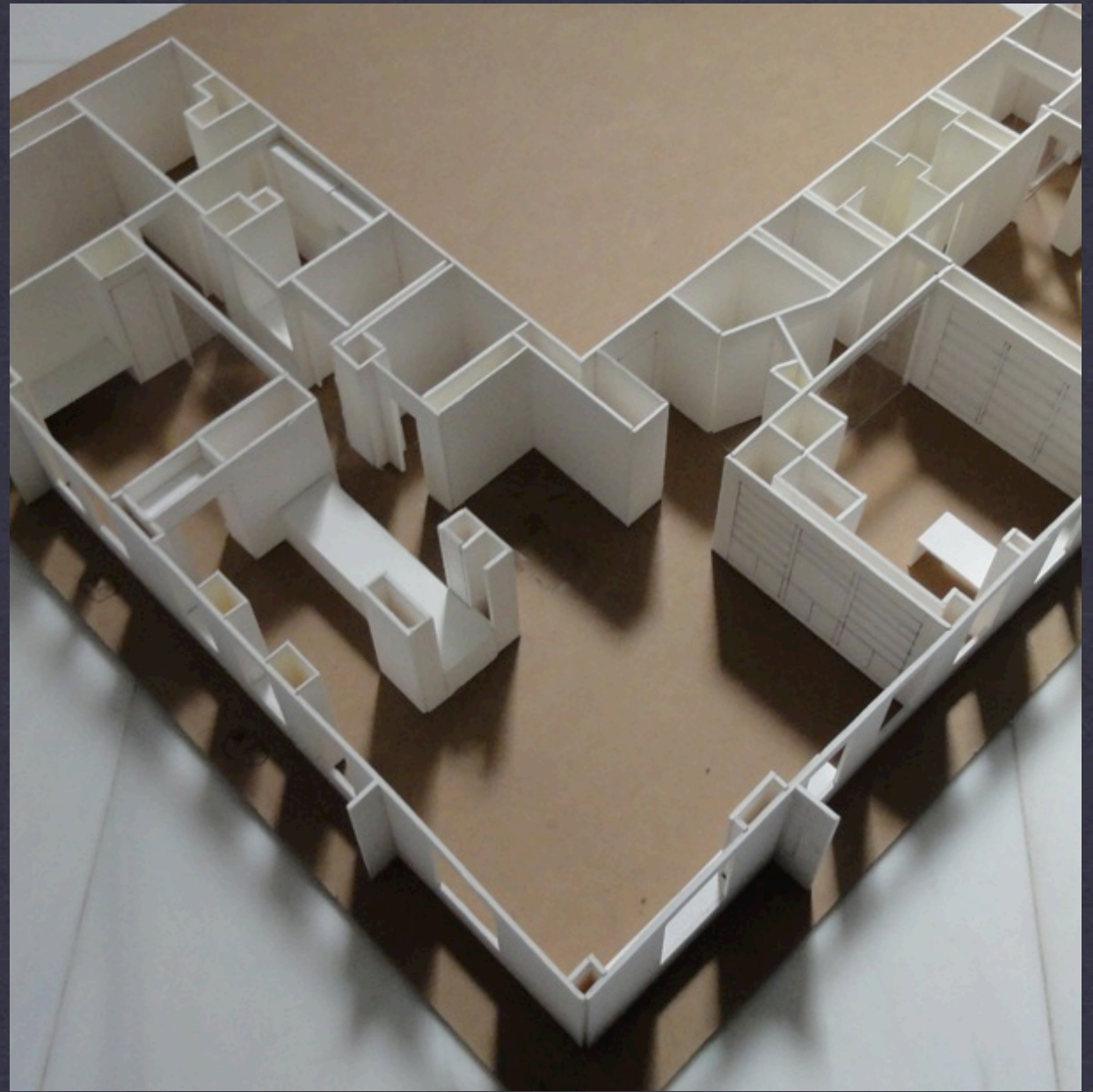
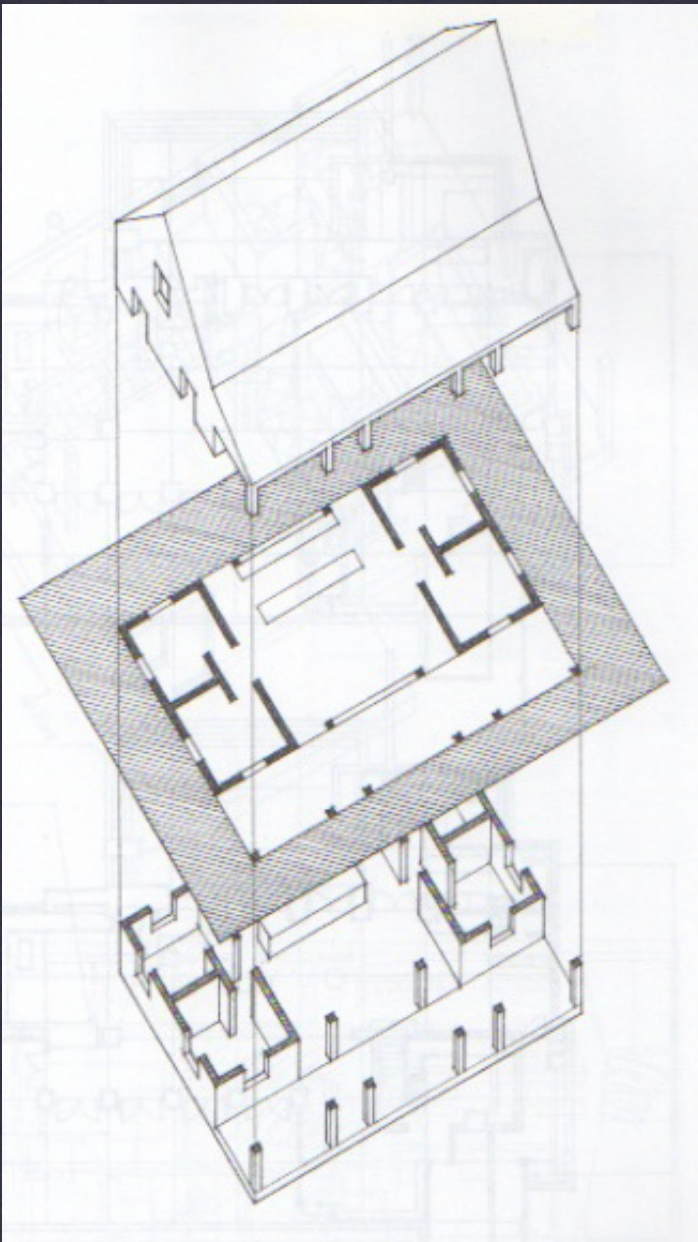


# DESCRIBING SPACE

professor Montgomery

axons

arch 1130

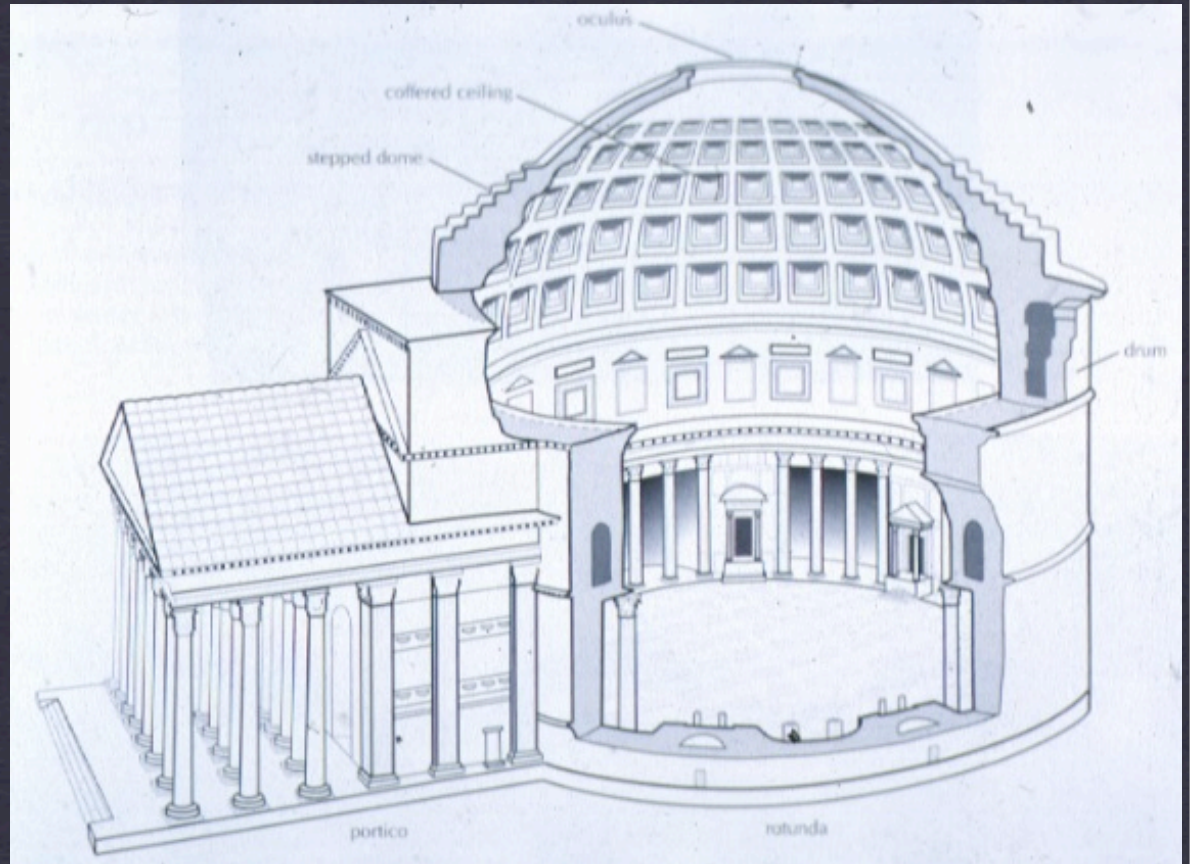
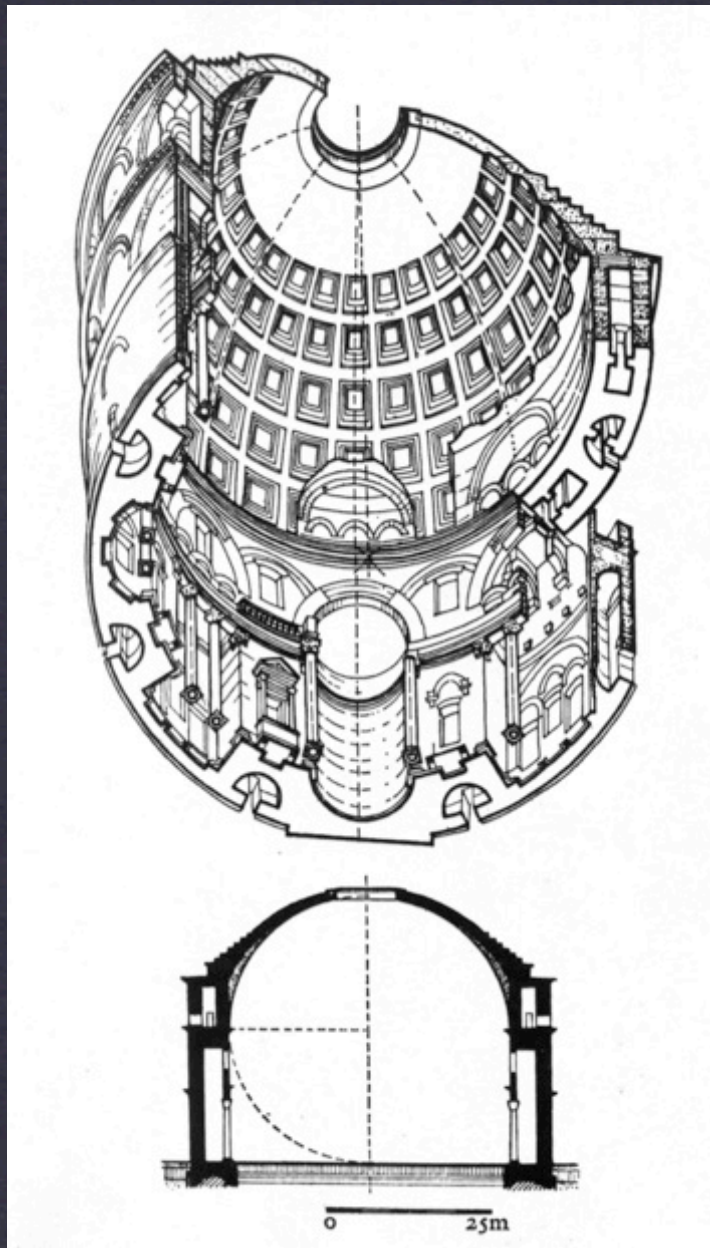


# DESCRIBING SPACE

professor Montgomery

axons

arch 1130



**DOCUMENTING SPACE**  
professor Montgomery

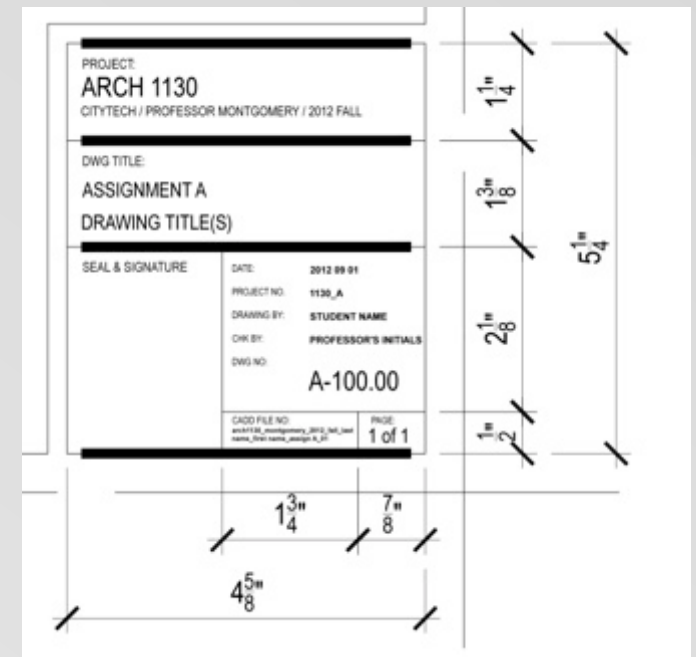
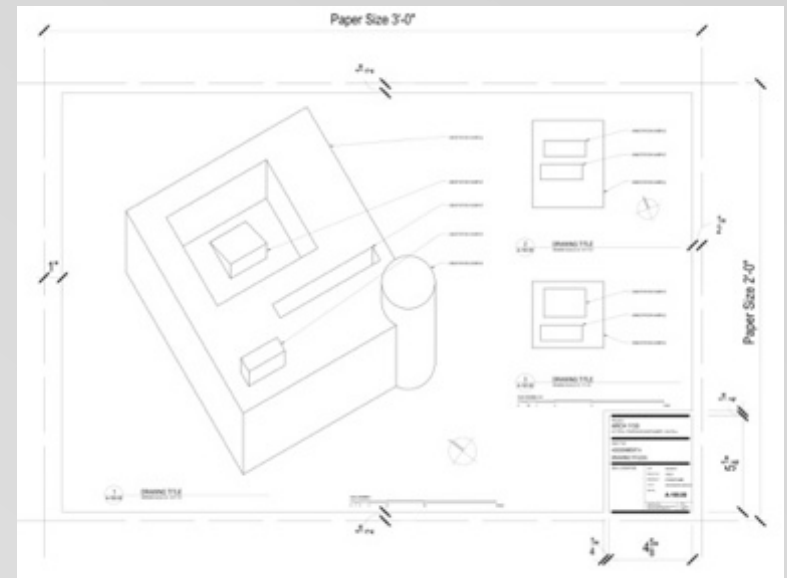
**cut away 3D views**  
arch 1130

# assignment A

## DOCUMENTING SPACE: VOORHEES LOBBY

**DUE: OCT 2, 2013**

- \* 24" x 36" vellum sheet following title block standard
- \* emphasis on quality of draftsmanship:
  - accuracy of dimensions
  - standard conventions for elements (see Ching Arch Graphics)
  - line weight (see Ching Arch Graphics)
  - include a graphic scale and north arrow for all views (where appropriate)
- \* views:
  - axon view (birds eye cut at top of wall at second level)  $3/8" = 1'-0"$
  - two plans (first level floor plan + second level RCP)  $3/8" = 1'-0"$
  - two sections (north south + east west)  $3/8" = 1'-0"$



professor Montgomery

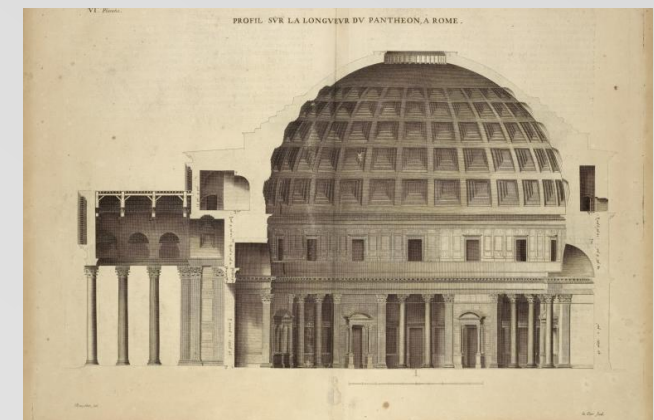
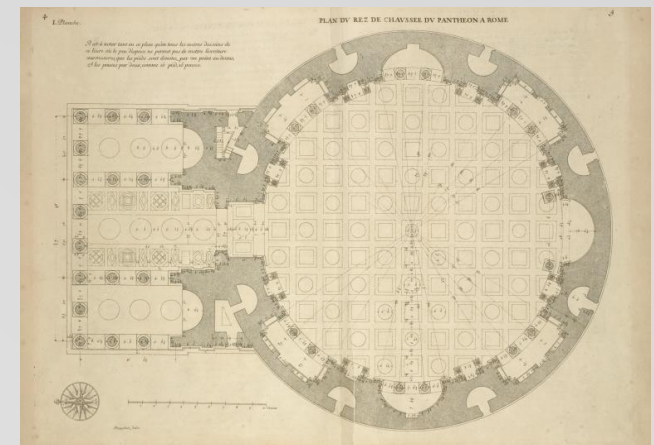
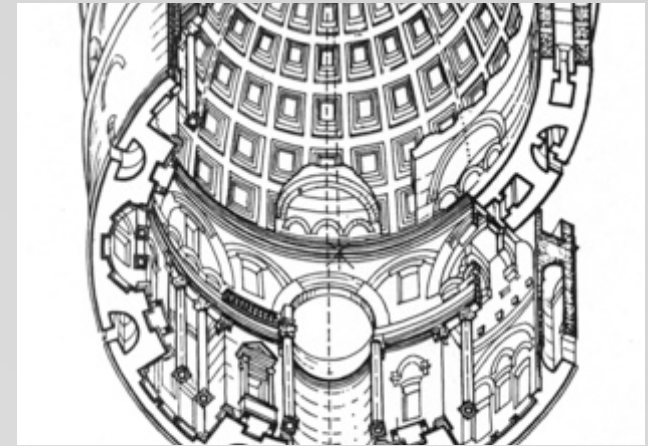
arch 1130

# assignment A

## DOCUMENTING SPACE: VOORHEES LOBBY

**DUE: OCT 2, 2013**

- \* ASSIGNMENT SUBMISSION REQUIREMENTS:
  - \* scan original drawings w/ wide format scanners on 8th floor.
  - \* place white bond paper 24"x 36" on top of original vellum drawing when inserting drawing through scanner.
  - \* adjust density as need to pick up all line work (seek CLT assistance to ensure highest quality scan.
  - \* upload to e-portfolio one 24"x 36" jpeg file at 150 dpi resolution per board
  - \* submit original drawing in class (both the jpeg and original must be submitted before a grade will be issued.)
  - \* all files submitted must follow this naming standard: Montgomery\_F\_12\_first name-last name (letter of assignment +drawing number).jpg (See Archiving Guidelines for more info)
    - \* example file name: Montgomery\_F\_12\_george-smith(B\_01).jpg
    - \* files not conforming to department standards will not be graded.



professor Montgomery

arch 1130