

SUBJECT

BUILDING TECHNOLOGY II

assignment H

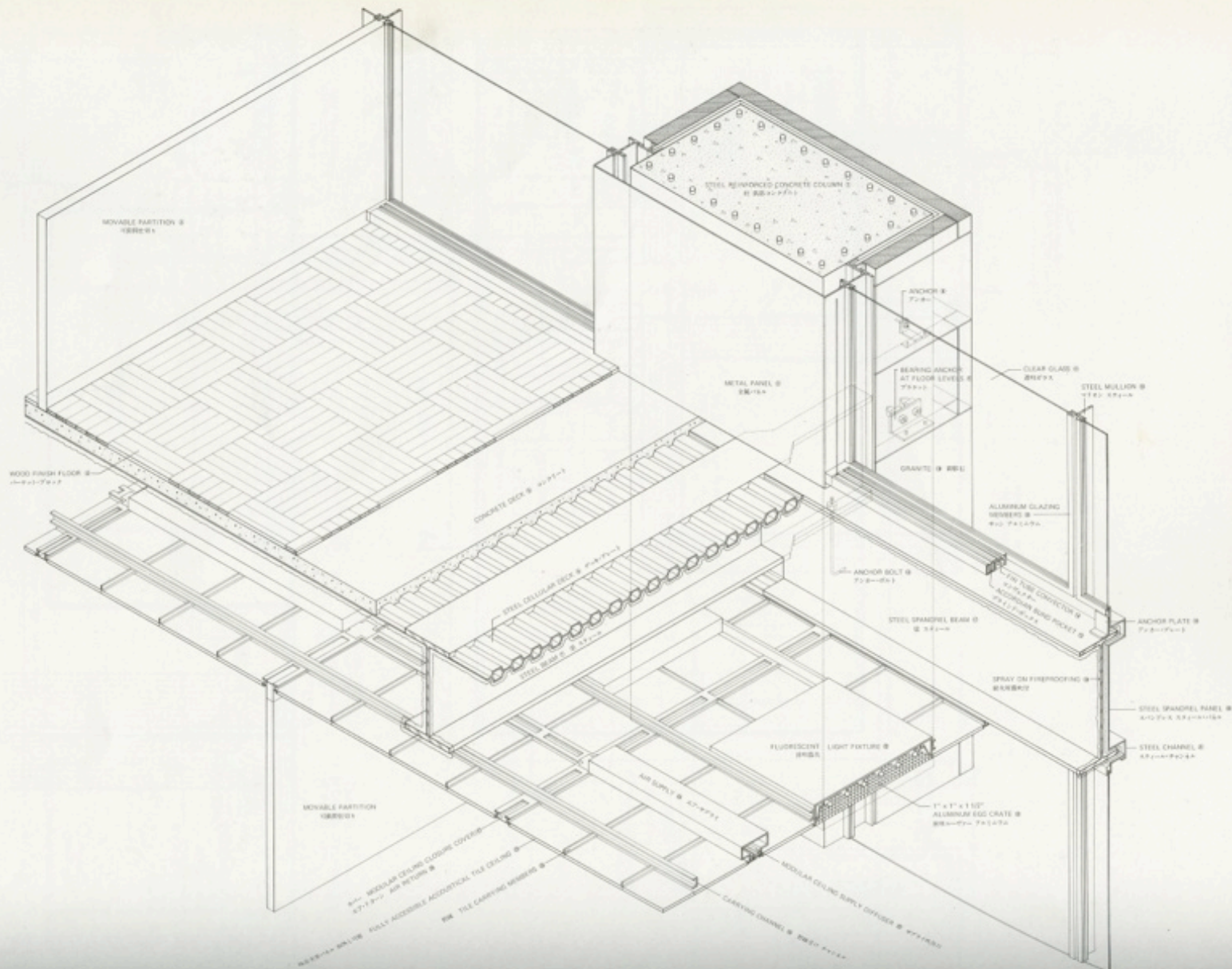
DATE

FALL 2012

PROFESSOR

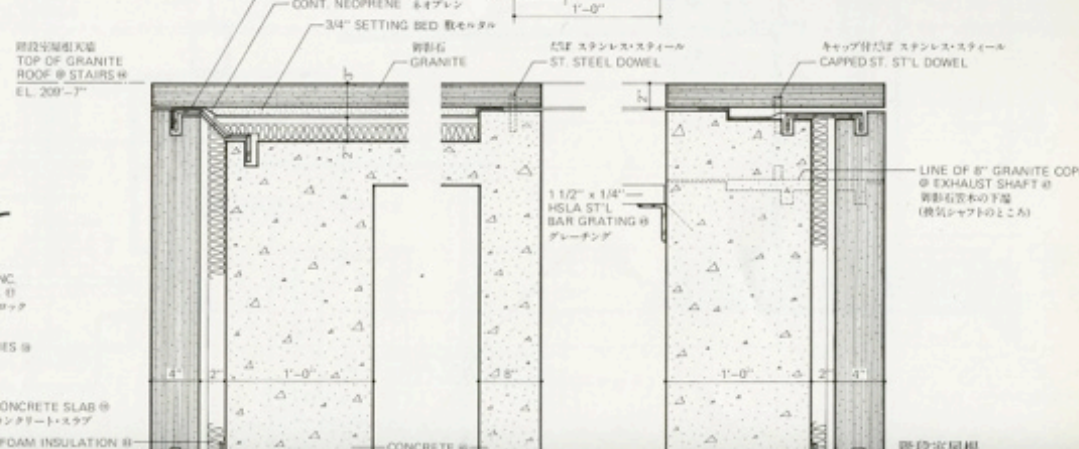
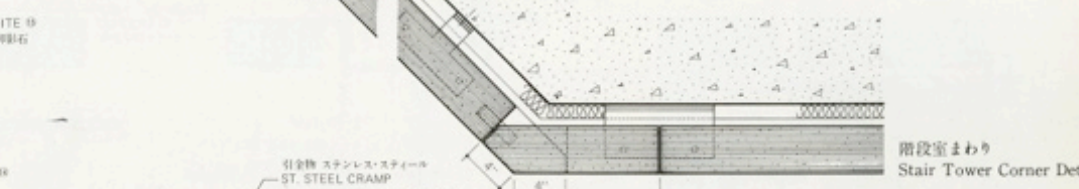
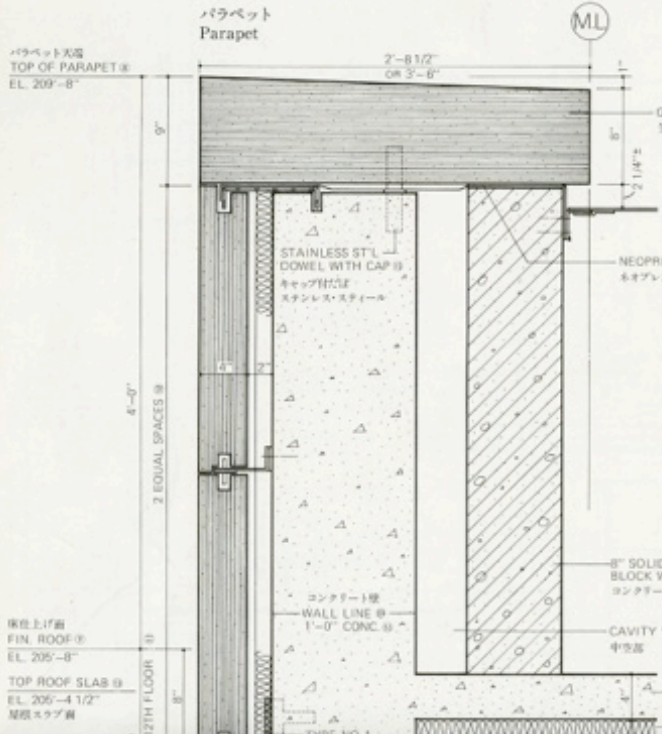
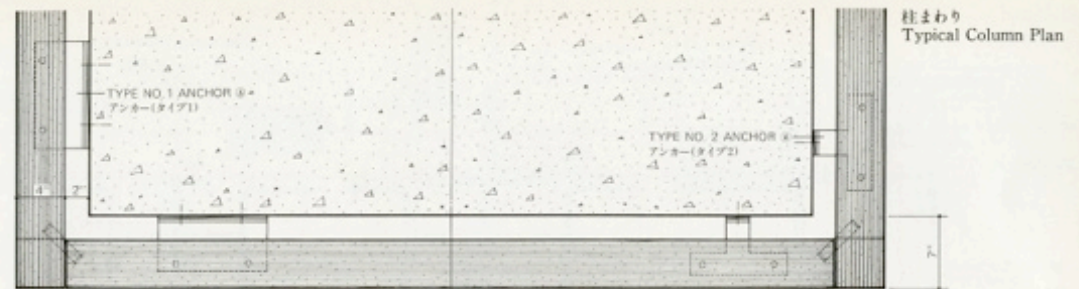
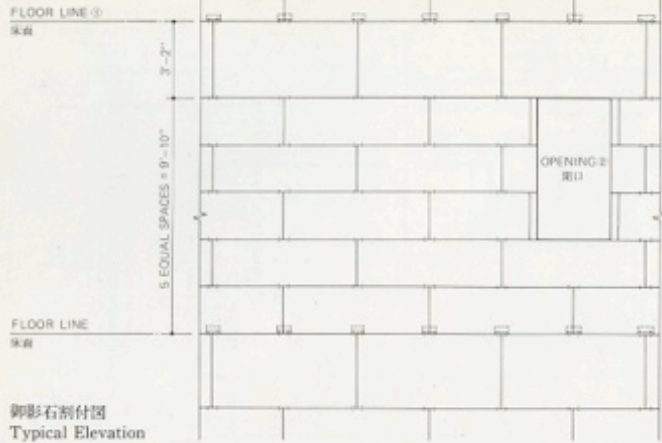
MONTGOMERY

構造システム
Structural System



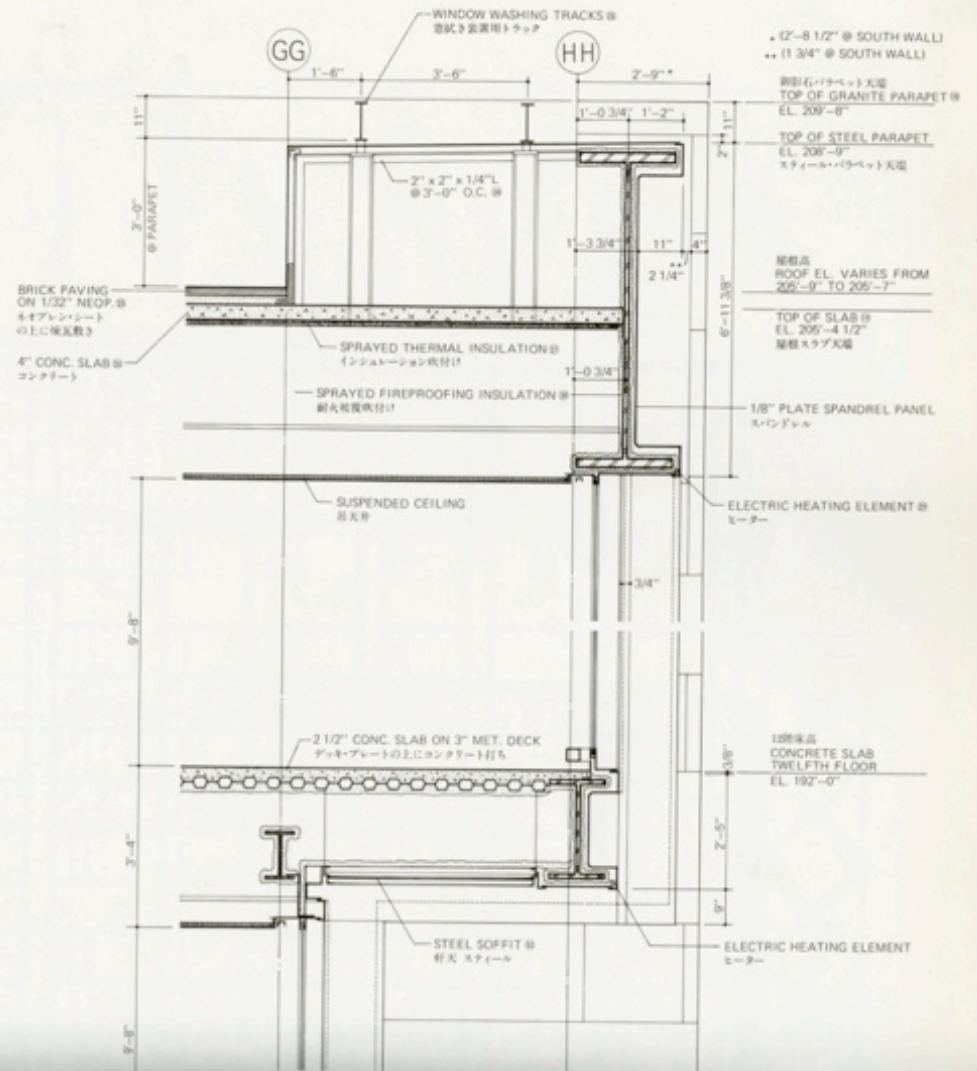
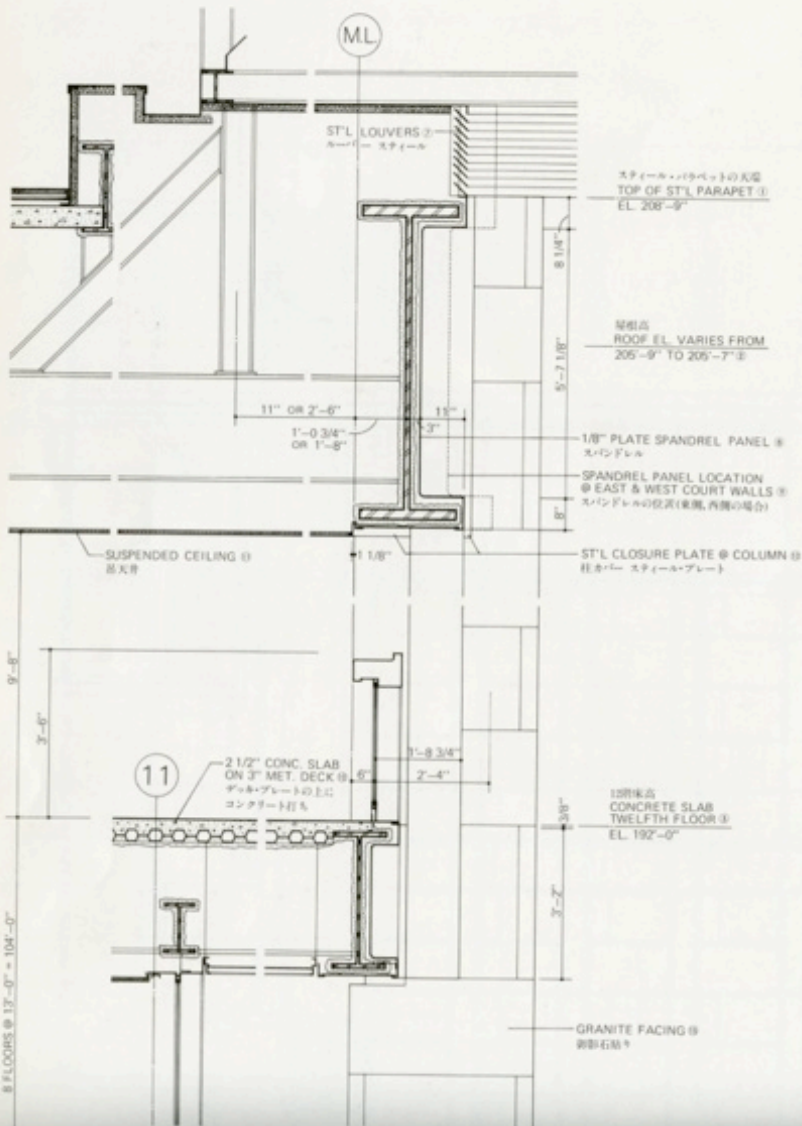
DETAIL TO WHOLE
professor Montgomery

three dimensional details
arch 1230



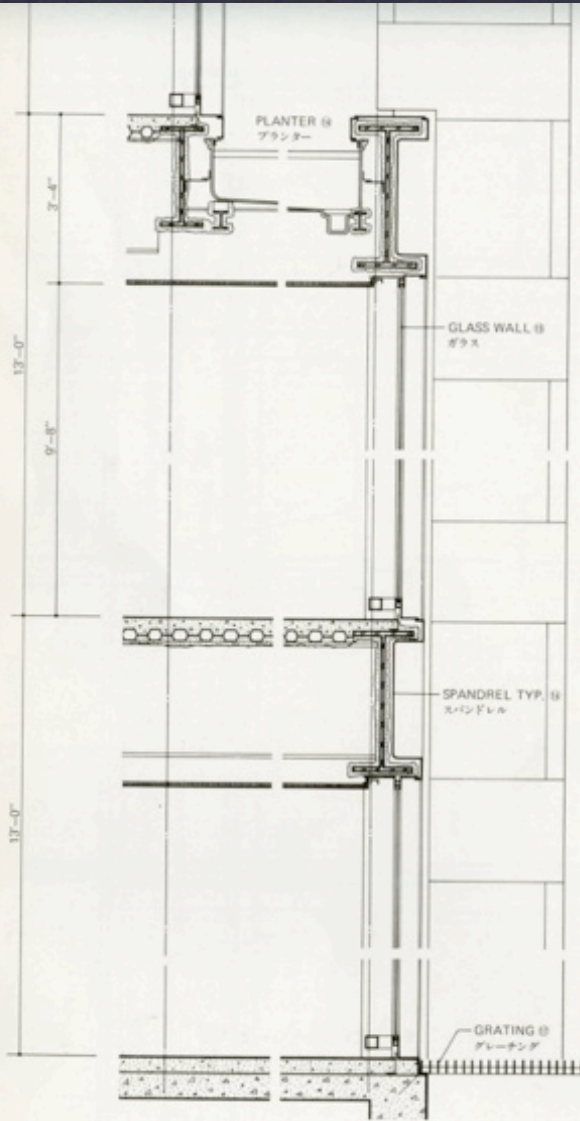
DETAIL TO WHOLE
 professor Montgomery

exterior wall details
 arch 1230

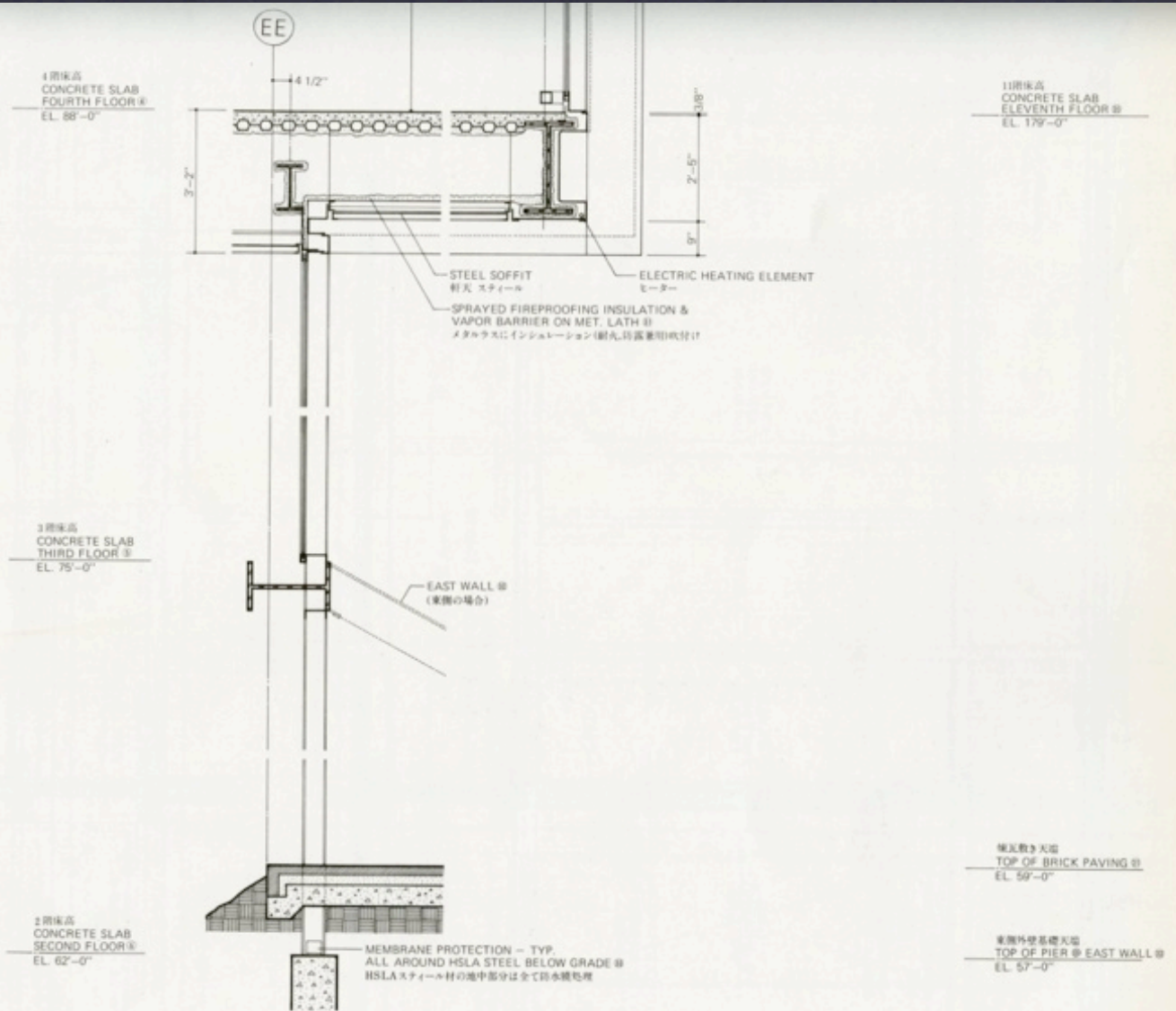


DETAIL TO WHOLE
 professor Montgomery

exterior wall details
 arch 1230



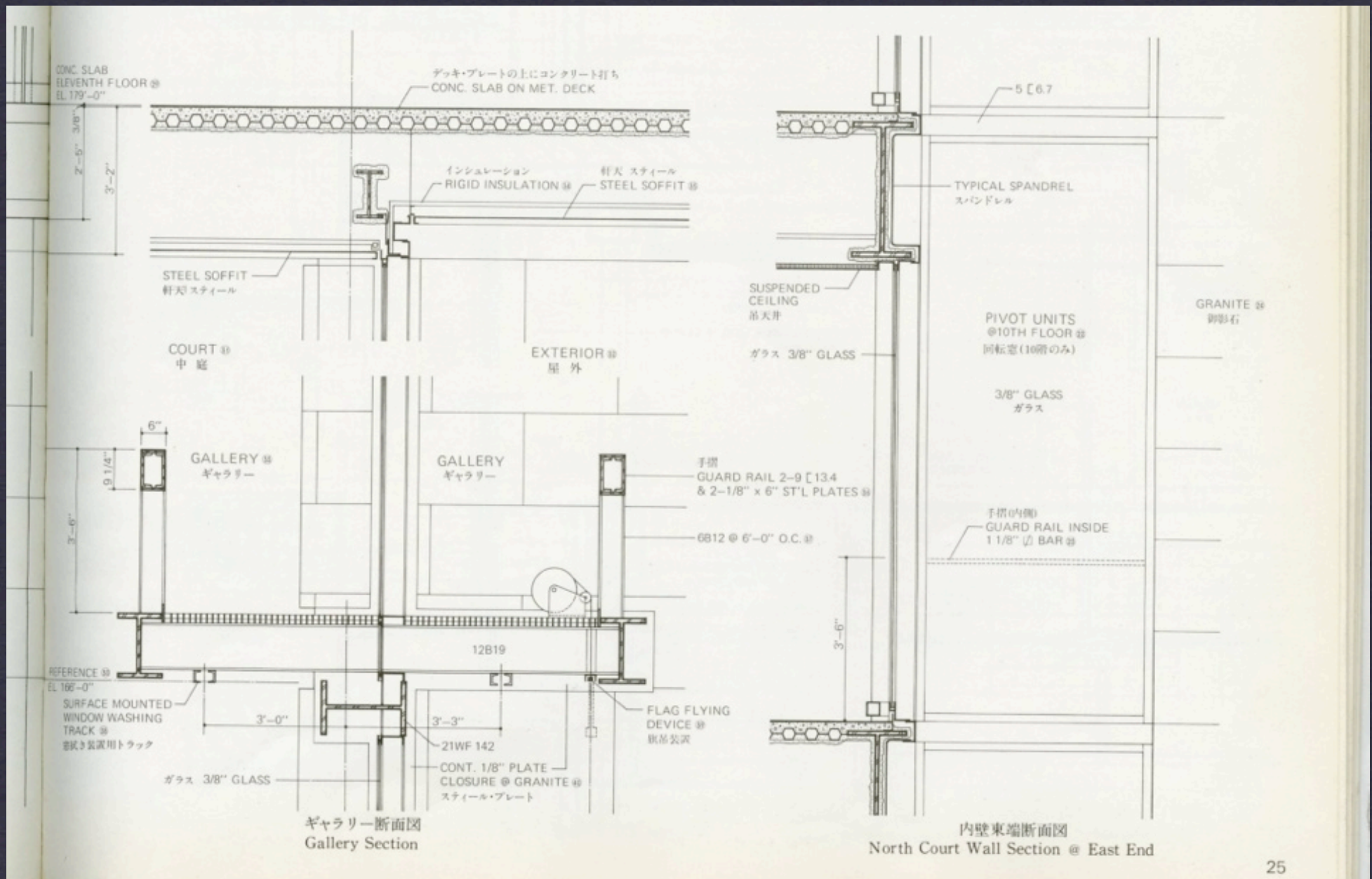
中庭北側内壁断面図
Court Wall Section (North)



東側および南側外壁断面図
Exterior Wall Section (East & South)

DETAIL TO WHOLE
professor Montgomery

exterior wall details
arch 1230



DETAIL TO WHOLE
professor Montgomery

exterior wall details
arch 1230

assignment H

CASE STUDY #2

DETAIL DRAWING

DUE: DEC 21* END OF DAY

***LATE SUBMISSIONS WILL BE DOWNGRADED 10%.**

- * INDIVIDUAL PROJECT
- * 24" x 36" sheet that follows studio standards
- * Develop Three Dimensional Detail of selected detail from S-Drive folder
- * Scale to be +/- 1"=1'-0" but may be adjusted depending on scope of drawing
- * Include 2-d floor plan and section through assembly at same scale
- * Include graphic scale and north arrow

