



SPRING 2013

1210 Architecture Foundation II

COLOR HAS EFFECT

1 Week Project

WEEK 05

OBJECTIVE

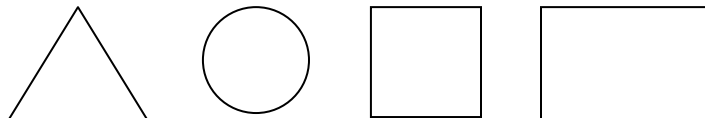
Students will learn how to work with color models.

LECTURE

COLOR HAS EFFECT: Discuss how to create a 2-D composition and apply primary, complimentary, and analogous colors in order to create a desired effect.

ASSIGNMENT

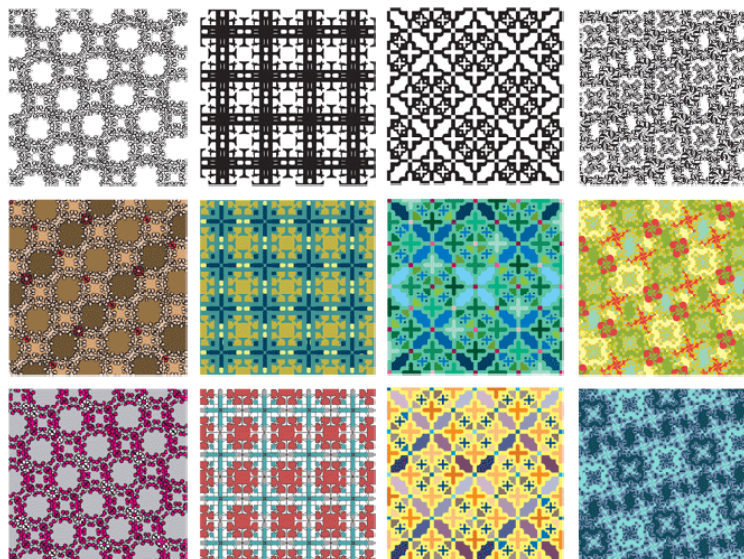
1. Generate a 2-D pattern on 11x17 bond paper by using geometric shapes like triangles, circles, squares and rectangles to design a repetitive pattern. On an 11x17 sheet show how your pattern was developed. Start with one shape and gradually add other elements showing the growth pattern of your design.



2. Color the 11x17 composition with colored pencils or markers using 3 analogous colors.
3. Repeat same pattern, but color with 3 complimentary colors.
4. Repeat same pattern, but color with 2 sets of analogous colors that are compliments.
5. Digitize your pattern, and color with 2 sets of analogous colors that are compliments (Adobe Illustrator).
6. Assess and write the goal and outcome of each study.

READING

Lupton, Ellen and Jennifer Cole Phillips. Graphic Design: The New Basics, pp. 70-83.



Joanna Marshall

Katie Evans

Anna Babalmaa

Ellen Kling