

# Sagrada Familia

1882-1926 Antoni Gaudi

Not completed – plans and models were destroyed during the Spanish Civil War

Attempting to continue the work based on interpretations

Three facades  
(2 completed)  
with three porches



# Sagrada Familia 1882-1926 Antoni Gaudi



# Sagrada Familia 1882-1926 Antoni Gaudí



Photo credit: Inigo Bujedo Aguirre

# Sagrada Familia 1882-1926 Antoni Gaudi



# Antonio Gaudi



Park Guell,  
Barcelona, 1904

Photo credit: (Tashen:Gossel) and internet



# Casa Mila, Barcelona, Spain: 1905-1920 Antoni Gaudi

Apartment Building with an interior courtyard and an exciting roof.

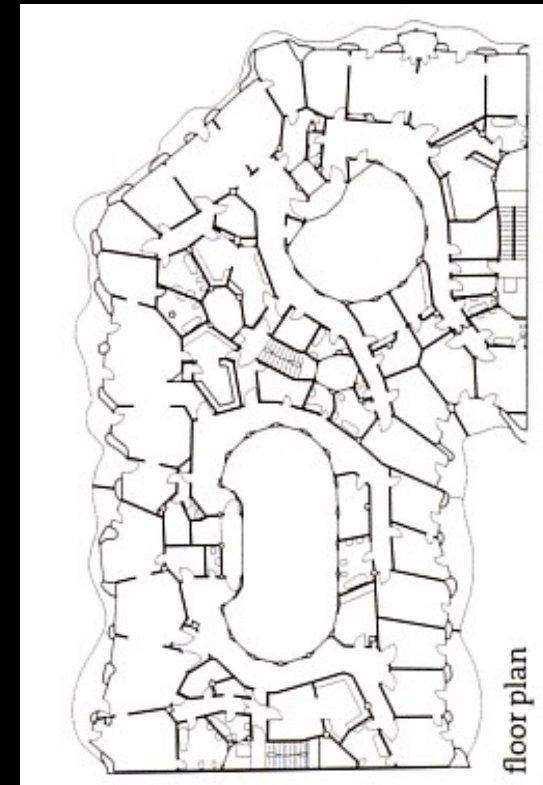
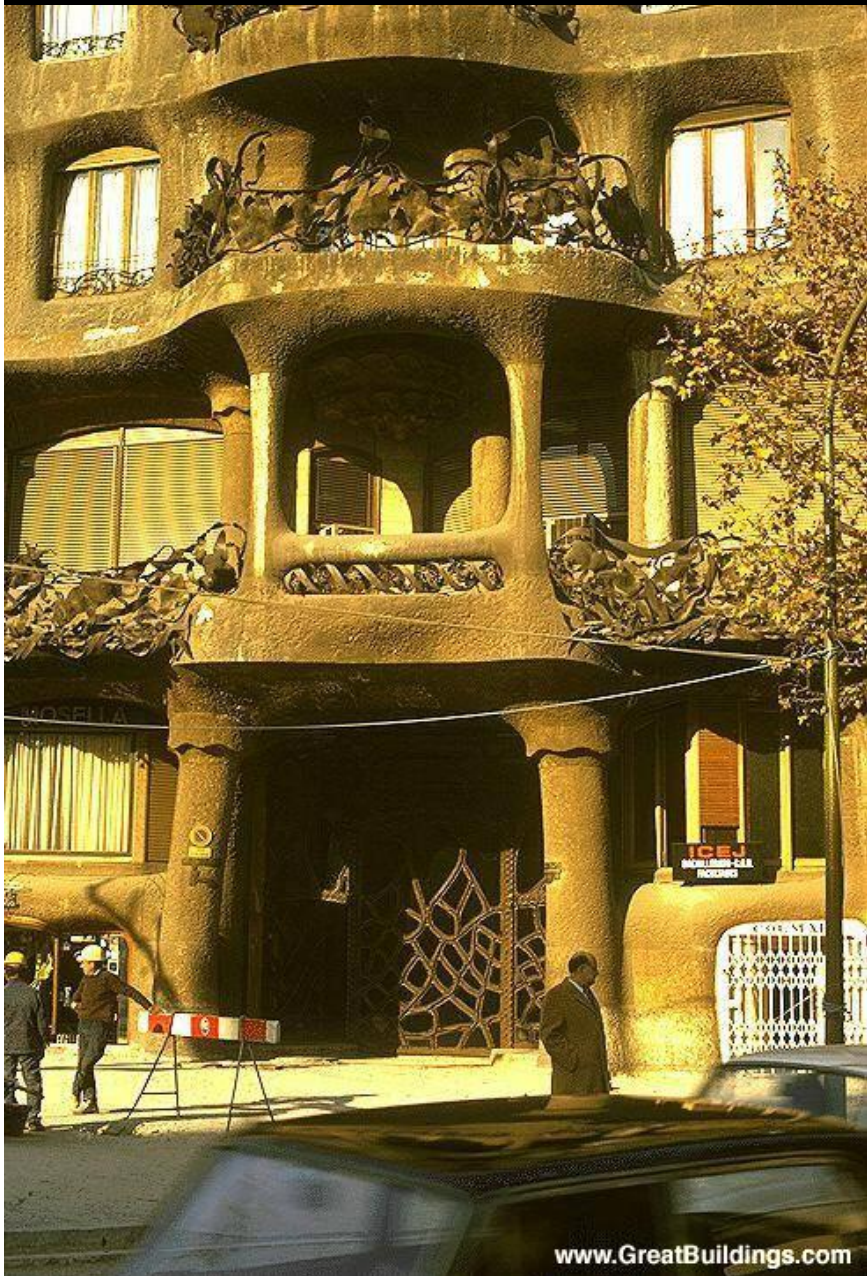


Photo credit: Rainer Martini

# Casa Mila , Barcelona, Spain: 1905-1920 Antoni Gaudi



# Casa Mila, Barcelona, Spain: 1905-1920 Antoni Gaudi





# Casa Mila, Barcelona, Spain: 1905-1920 Antoni Gaudi



Photo credit: Rainer Martini

# Casa Mila, Barcelona, Spain: 1905-1920 Antoni Gaudi



Photo credit: Rainer Martini

# Other Developments

Form to function

Beginning of Modern Architecture

Started in Germany, Austria and Holland

Series of individuals responding in their own way

Inspiration in advances in science, technology and social and philosophical thought

# Post Office Savings Bank

Vienna, Austria 1904-12

Designed by Otto Wagner –  
Architect and Engineer

Won a competition

Very solid building on the exterior as were the rules of the competition



# Post Office Savings Bank Vienna, Austria 1904-12

Designed by Otto Wagner – Architect and Engineer

Inside the bank is lightweight –  
curved ceiling, slender concrete supports



# The Steiner House Vienna, Austria 1910

Designed by Adolf Loos 1870 - 1933

Extremely simple – admired by many American and European Architects

Demonstrates the typical appearance of the “new architecture”

Authorities would only allow a 1 storey house with a mansard roof  
– Loos arched a metal roof down to the ceiling of the ground floor

# The Steiner House Vienna, Austria 1910



# Looshaus, Michaelerplatz, Vienna, 1910





# Chicago

Exploration in steel-framed structures by a group led by Louis Sullivan

This grew into America's phenomenon the skyscraper.

Frank Lloyd Wright left Sullivan to go on his own and develop a new housing - "Prairie-style" houses

# The Reliance Building, Chicago, Illinois: 1890



# The Reliance Building

Four-Storeyed Structure was completed in 1890

Extended to 13 Floors in 1894



[www.GreatBu](http://www.GreatBu)



[www.GreatBuildings.com](http://www.GreatBuildings.com)

# Guaranty Building, Buffalo, New York, 1895

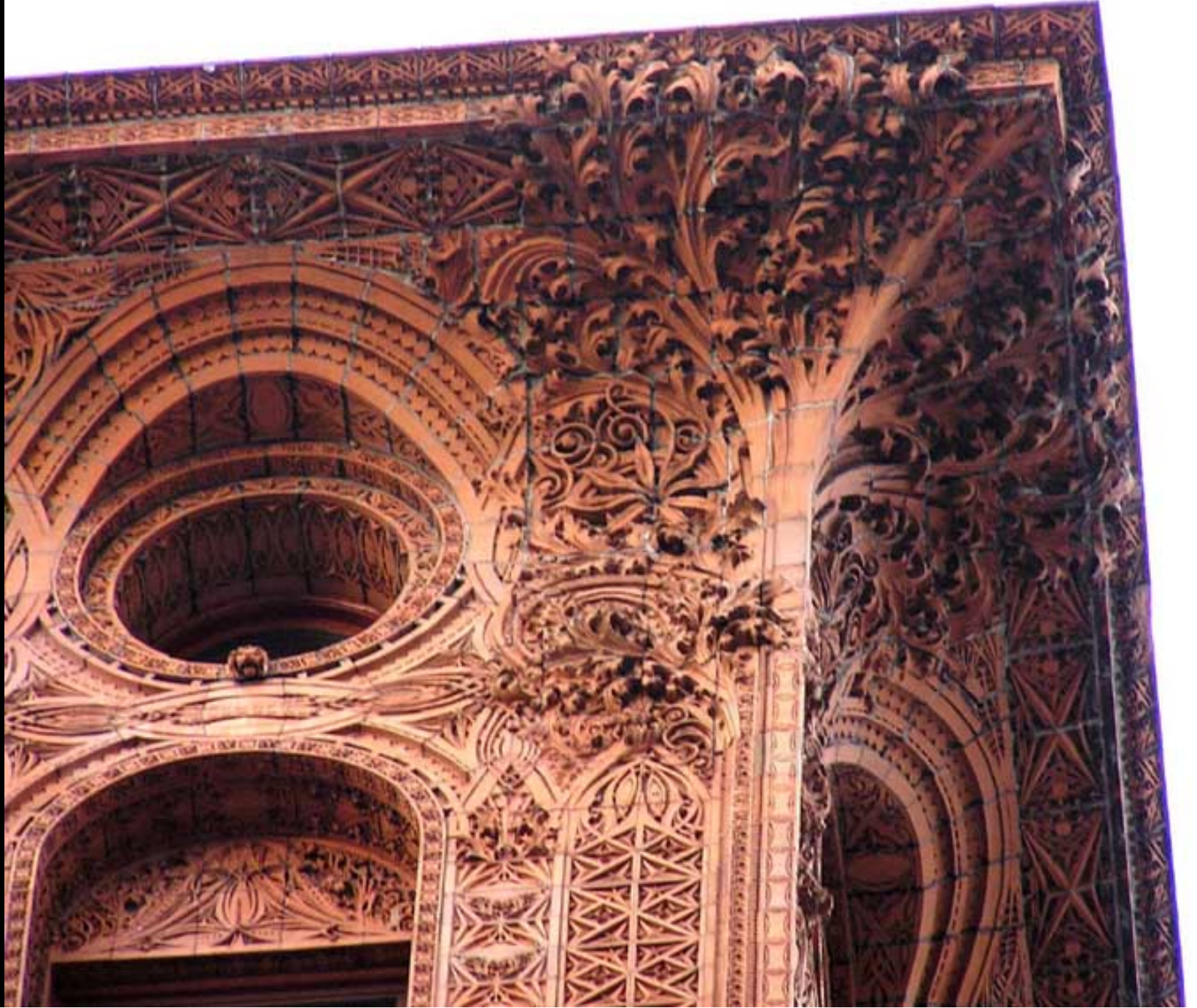
galenfrysinger.com



# Guaranty Building, Buffalo, New York, 1895

[www.buffaloah.com](http://www.buffaloah.com)







# Guaranty Building, Buffalo, New York, 1895

[galenfryinger.com](http://galenfryinger.com)





# Glass Pavilion, Cologne Werkbund Exhibition 1914

ARTstor - City College of New York

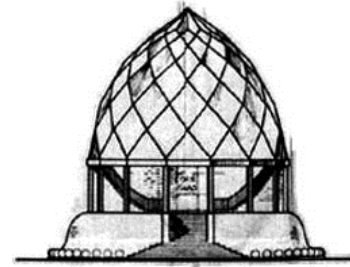


# Glass Pavilion, Bruno Taut, Germany

A Modernist & Expressionist building and one of the first of glass bricks.

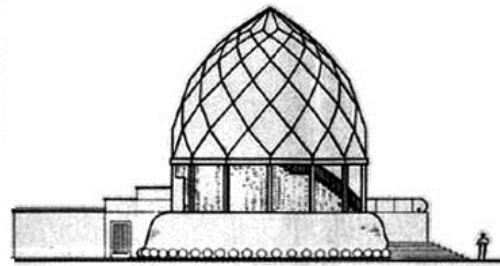


Glashaus  
in Köln 1911

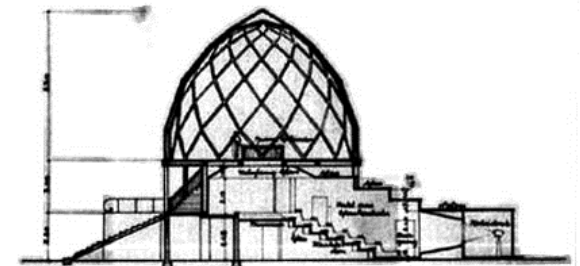


Haupt-Ansicht.

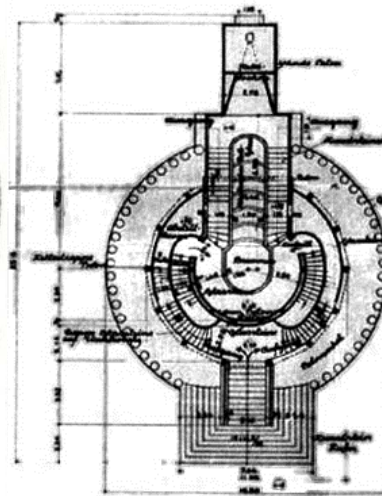
Ausstellung der Glasindustrie  
auf der Werkbund-Ausstellung  
Köln 1911.



Seiten-Ansicht.



Längenschnitt

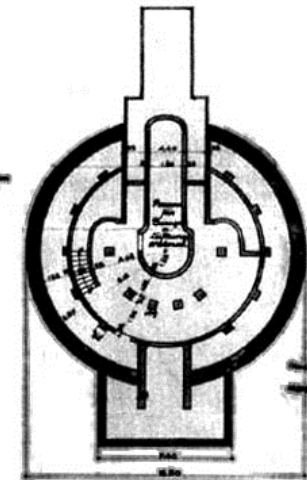


Längsschnitt innere Raum



Detaillierter Längsschnitt

Ansicht 1:100



Längsschnitt

Gezeichnet von dem Architekten  
Bruno Taut  
Architekt  
Dr. Oskar  
Schwimmer

Berlin 1911  
Architekt  
Dr. Oskar  
Schwimmer

# Glass Pavilion, Bruno Taut, Cologne, Germany 1914



# Robie House Chicago, IL 1909

Designed by Frank Lloyd Wright 1867- 1959

Early Prairie Style – Overhanging roofs shelter the flow of interior spaces to the outside through windows and terraces

Opening to the site – landscape





**Robie House** Chicago, IL 1909

# Robie House Chicago, IL 1909

