



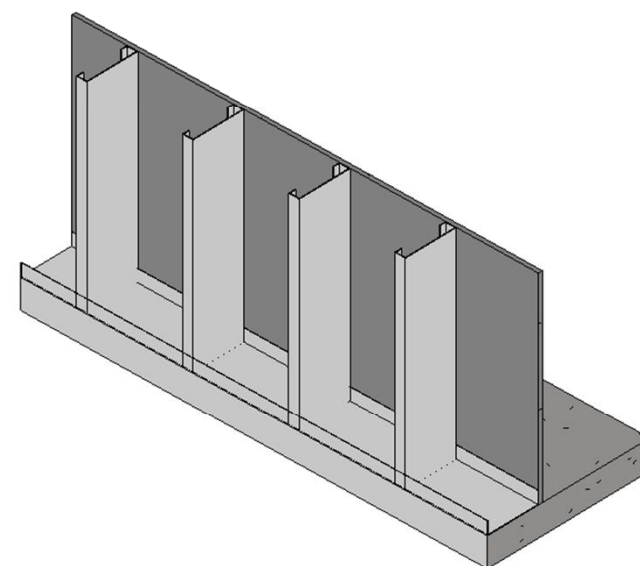
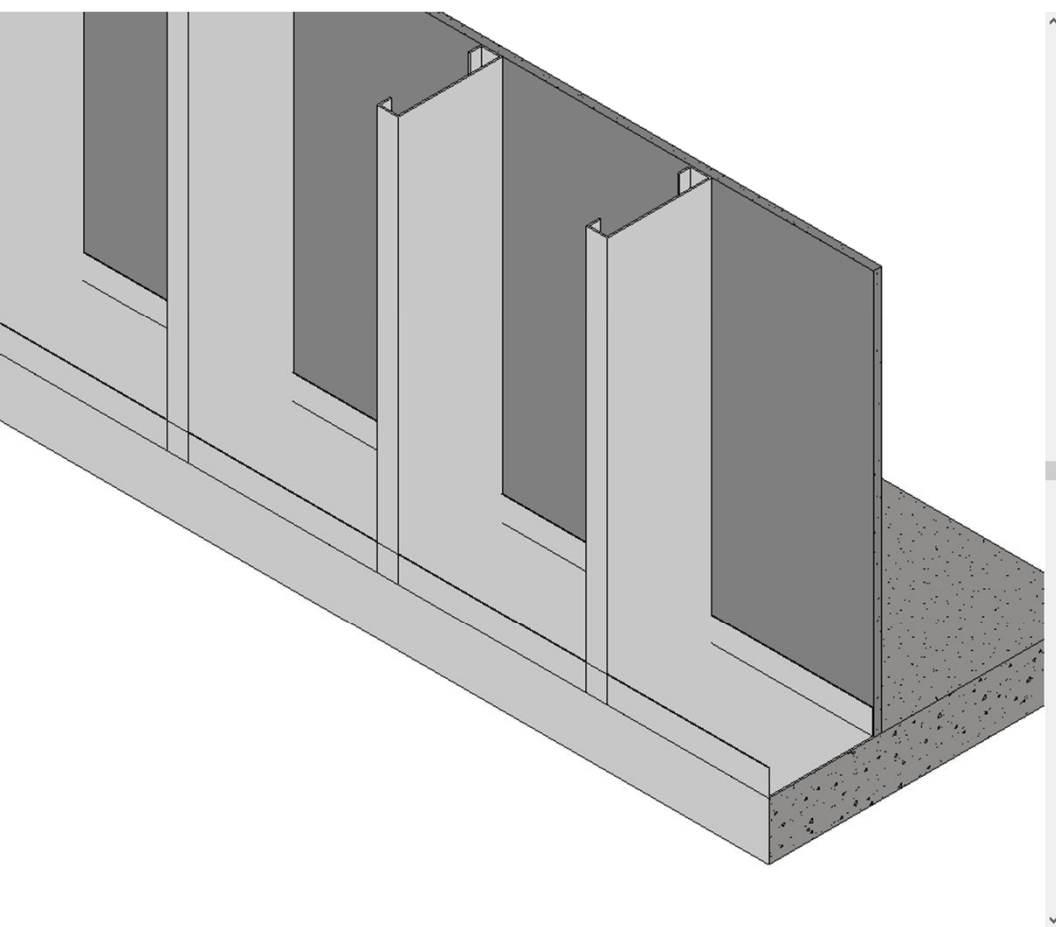
Brian Manrique
Building Tech 3
Arch 2431 Professor King

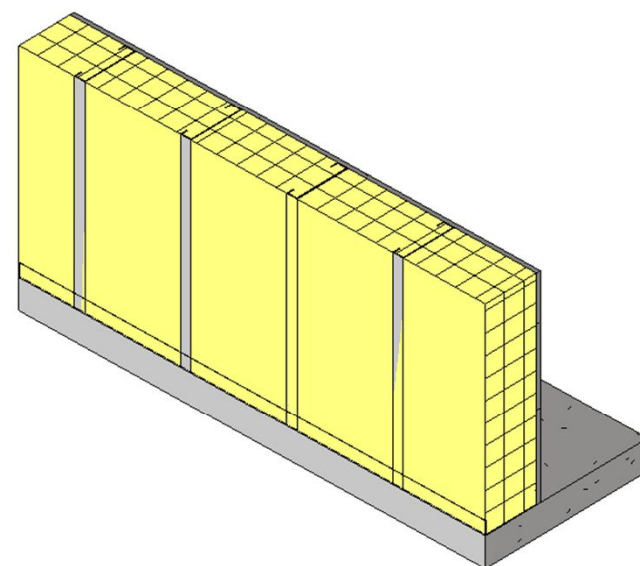
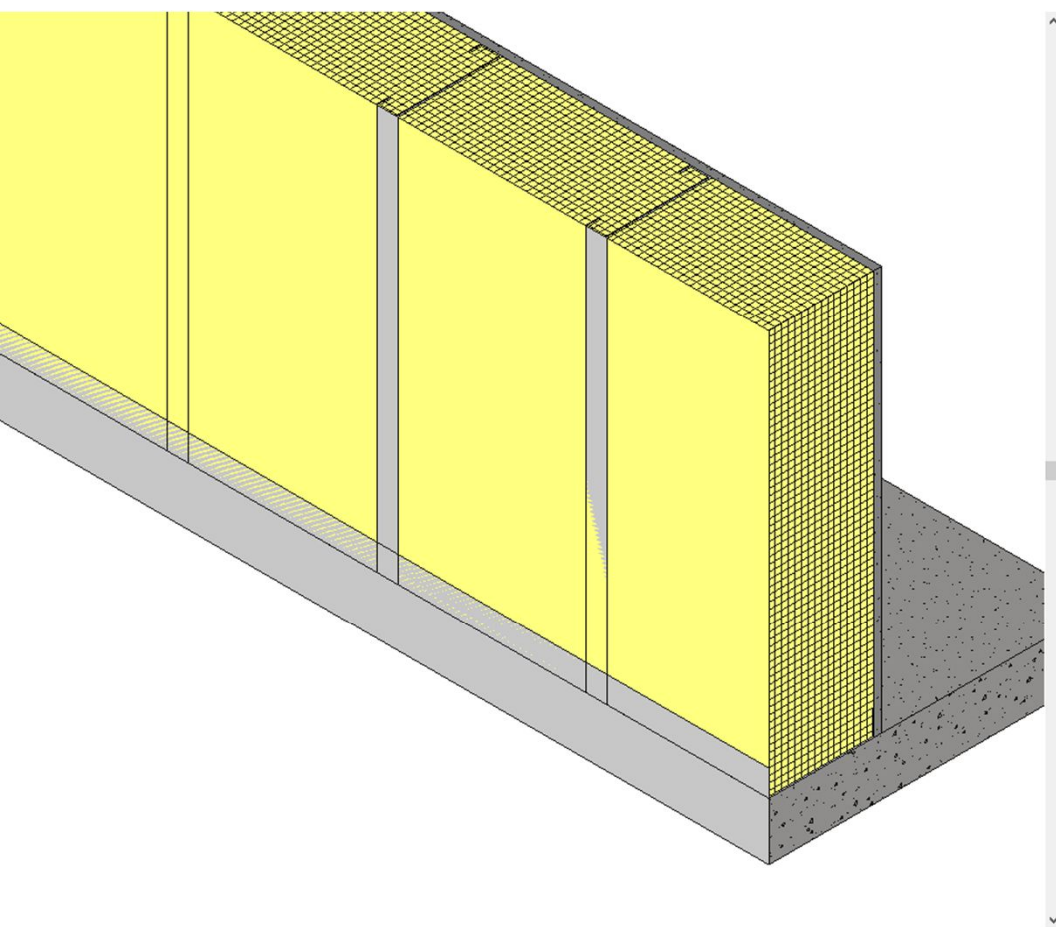
Kalzip Rainscreen system : Louisiana Superdome, New Orleans

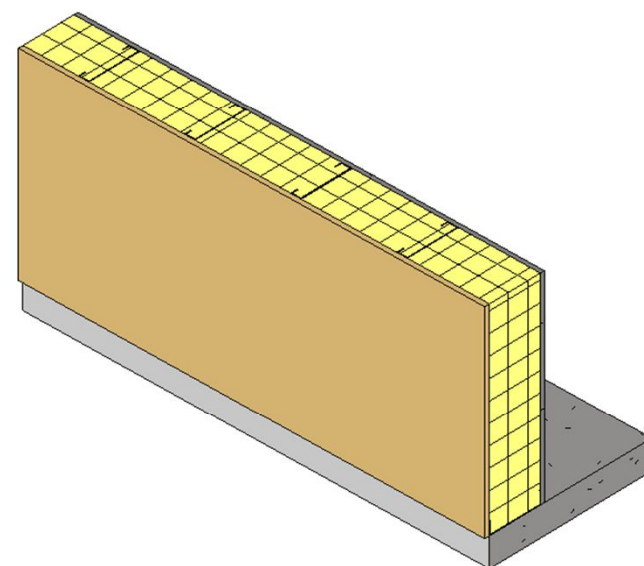
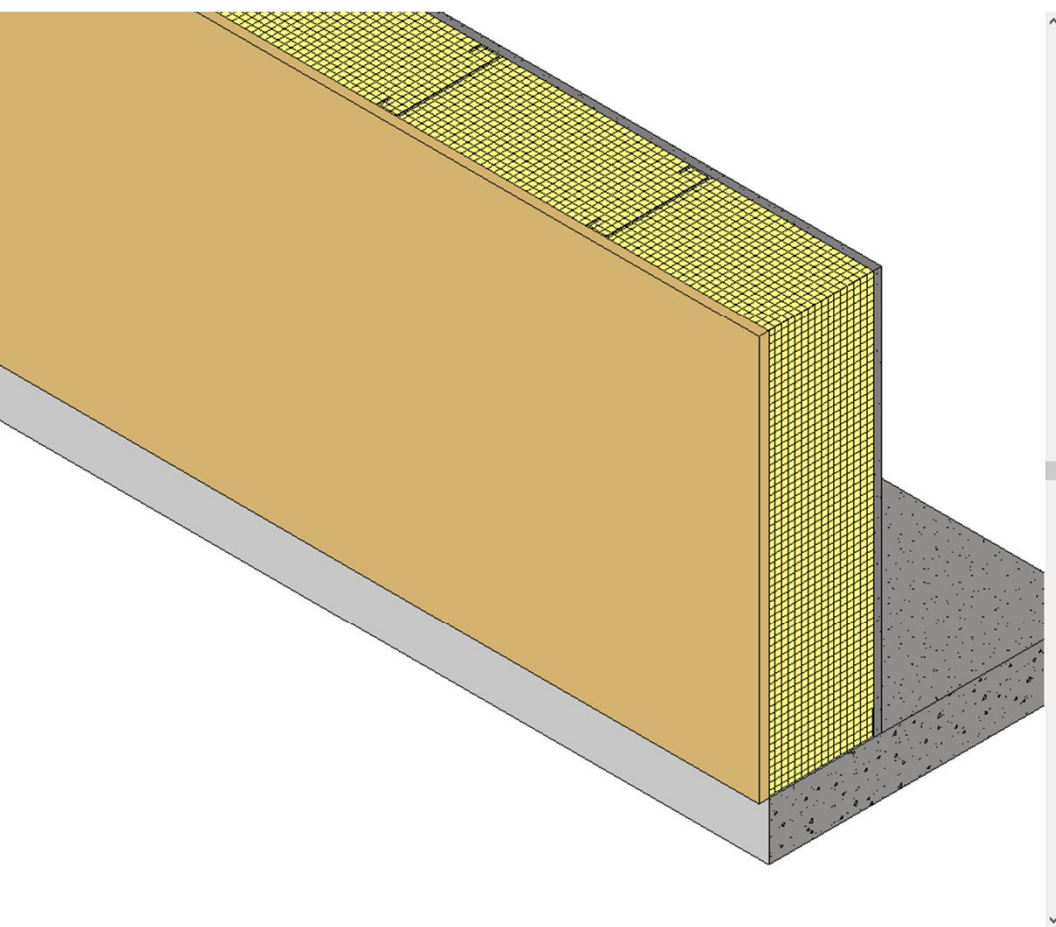


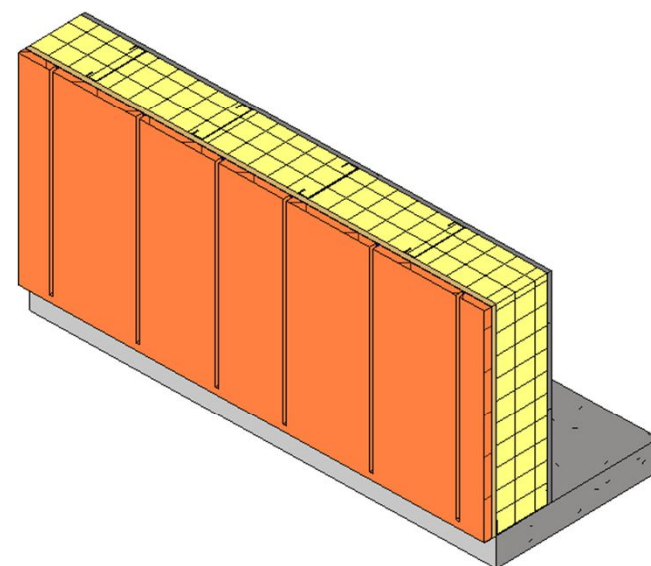
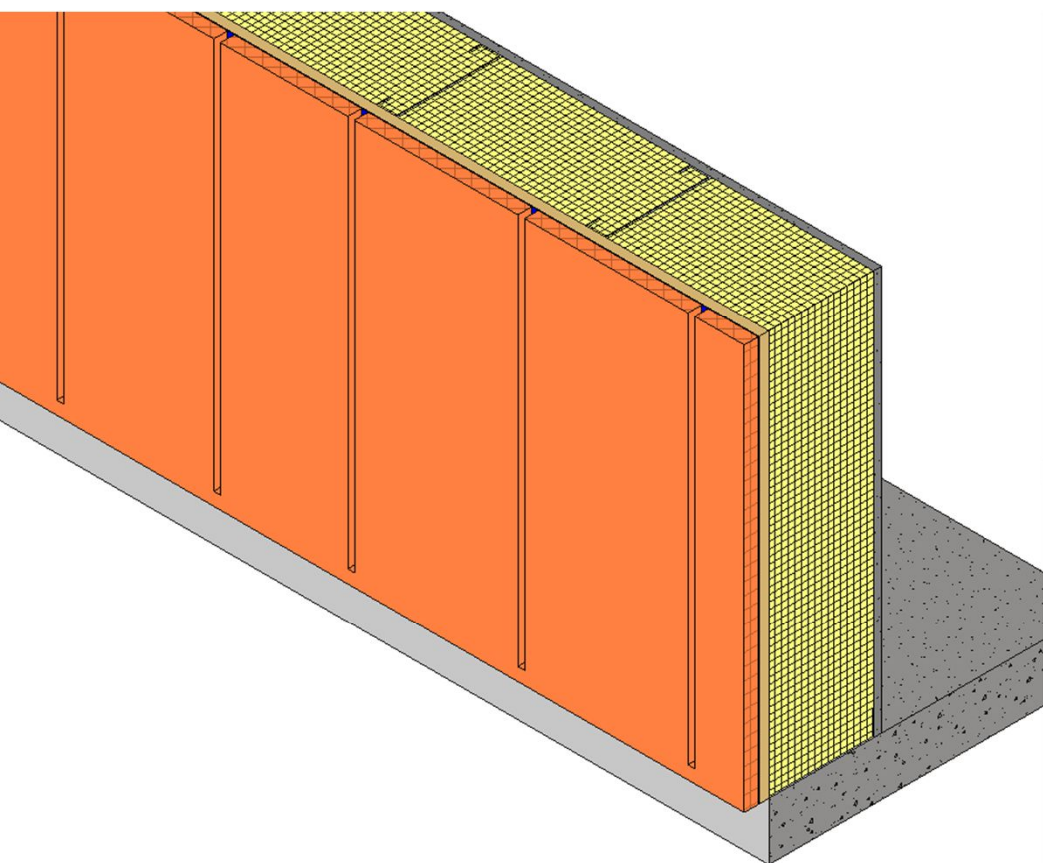
Kalzip® FC rainscreen is a façade system that incorporates a fast-to-install lightweight flat rainscreen panel. The main feature of the system is its flexibility which allows the installation of the profiles to be carried out in two directions, either from the top down or from the bottom up

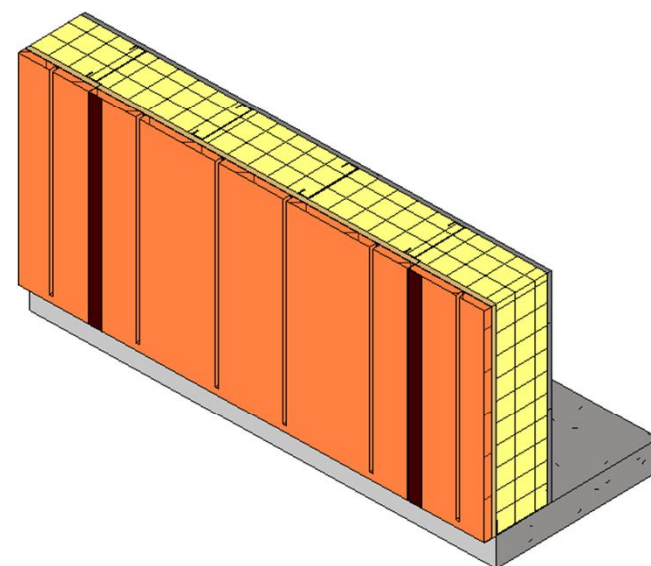
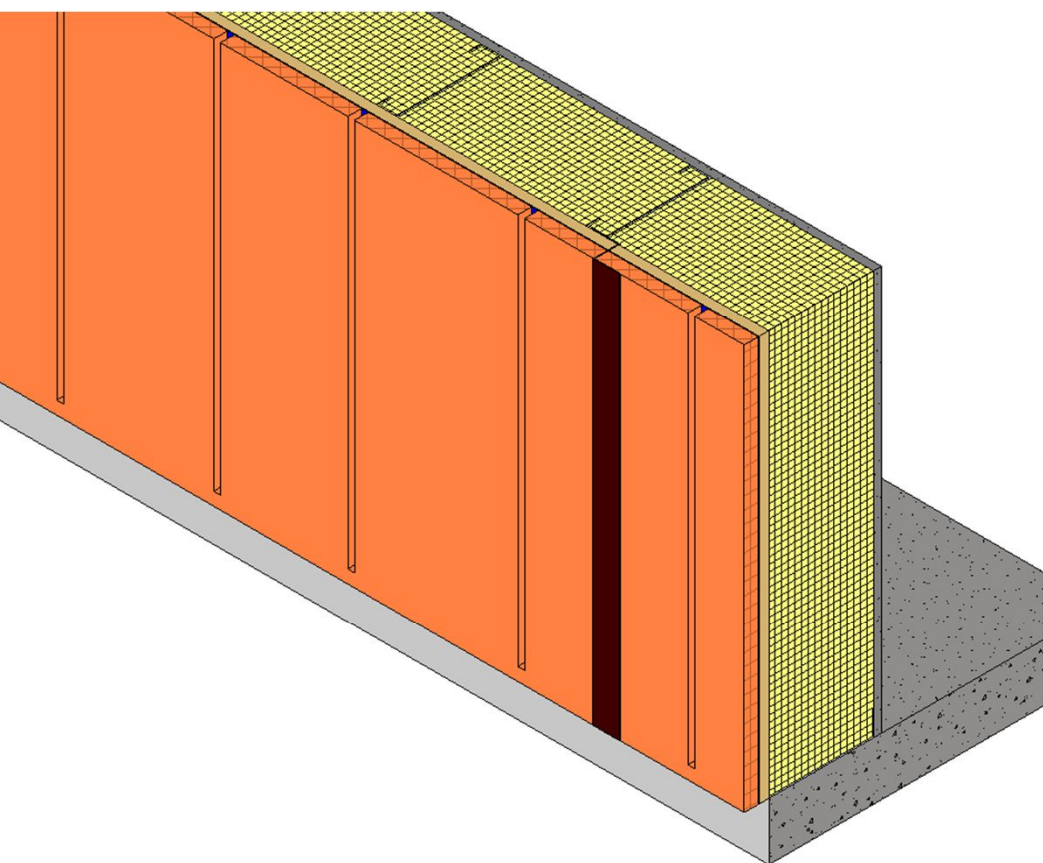


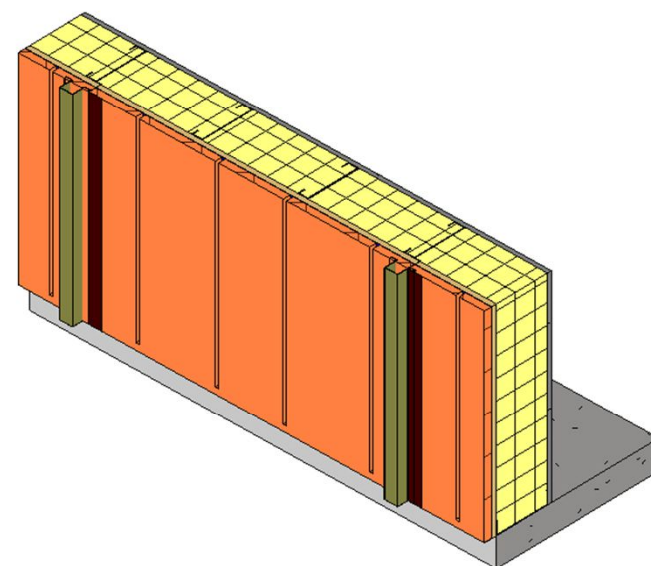
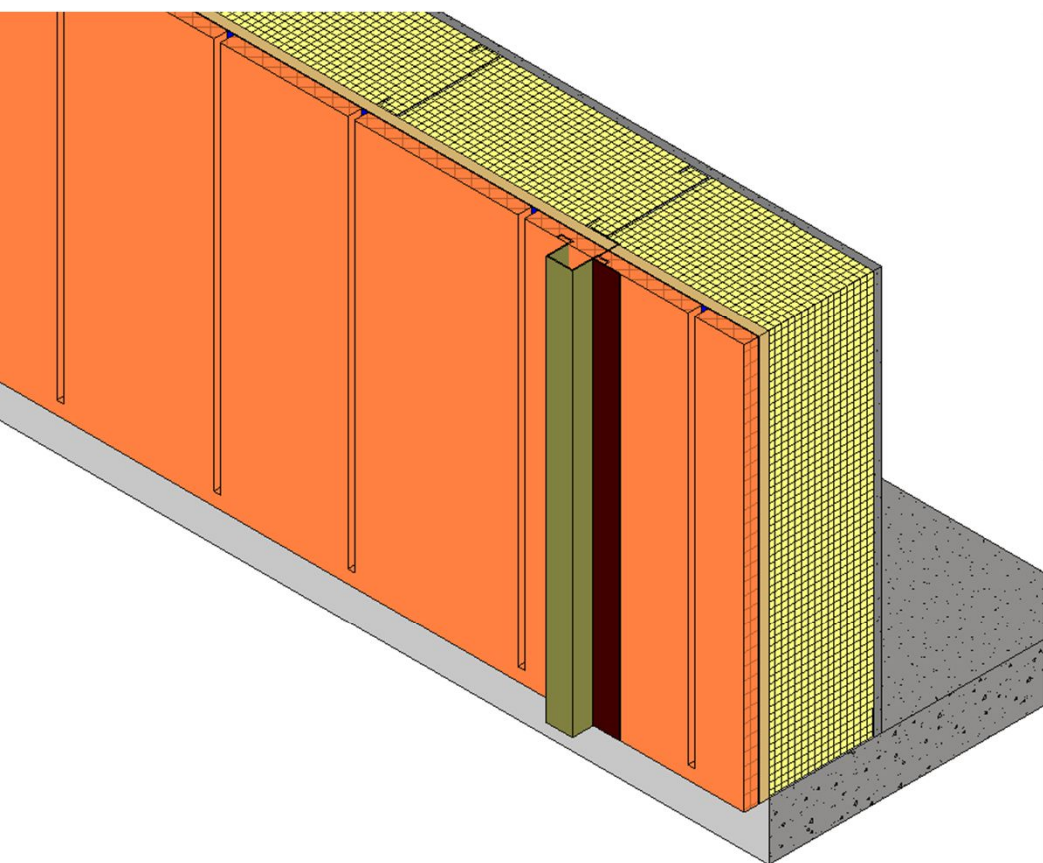


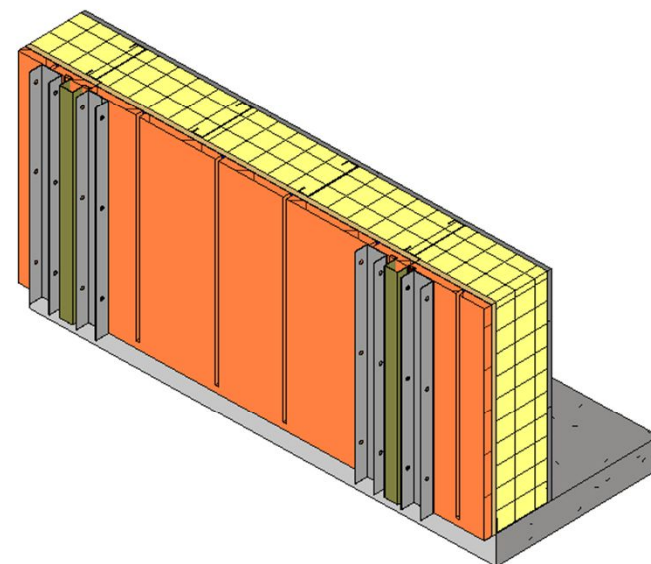
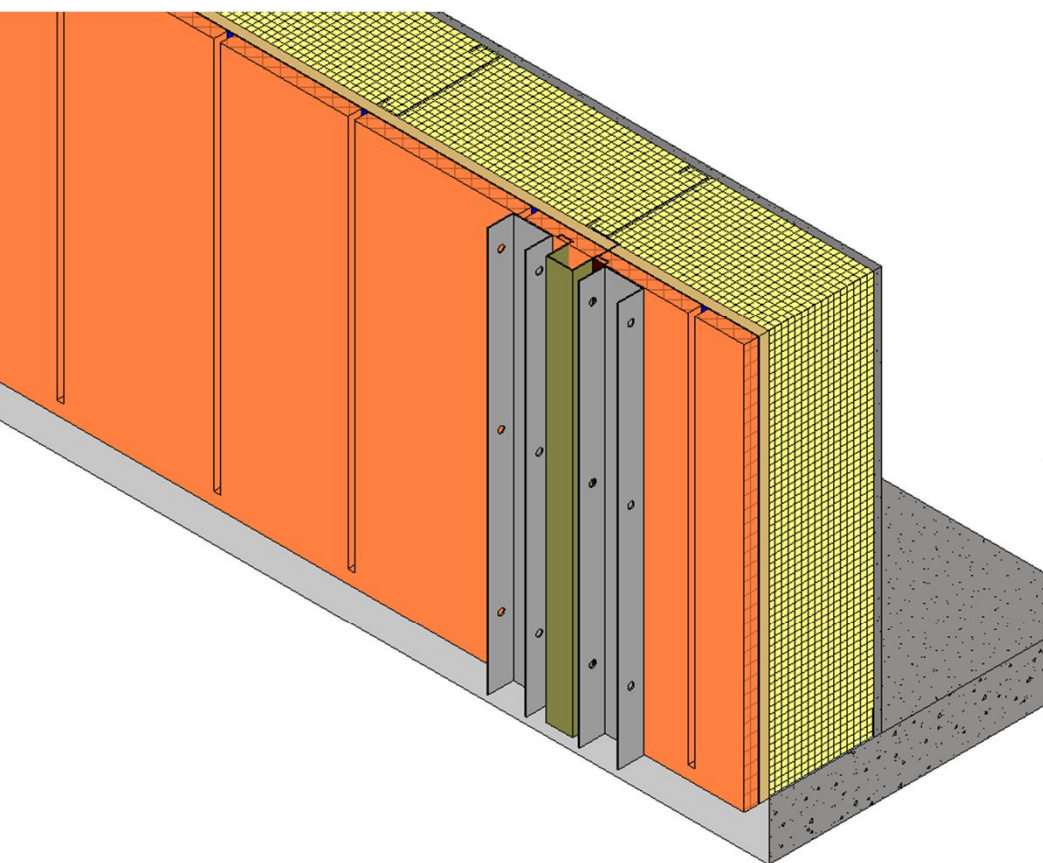


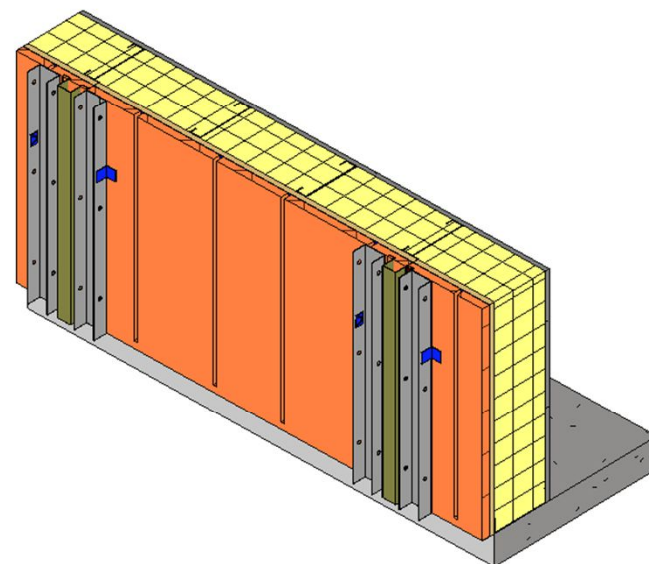
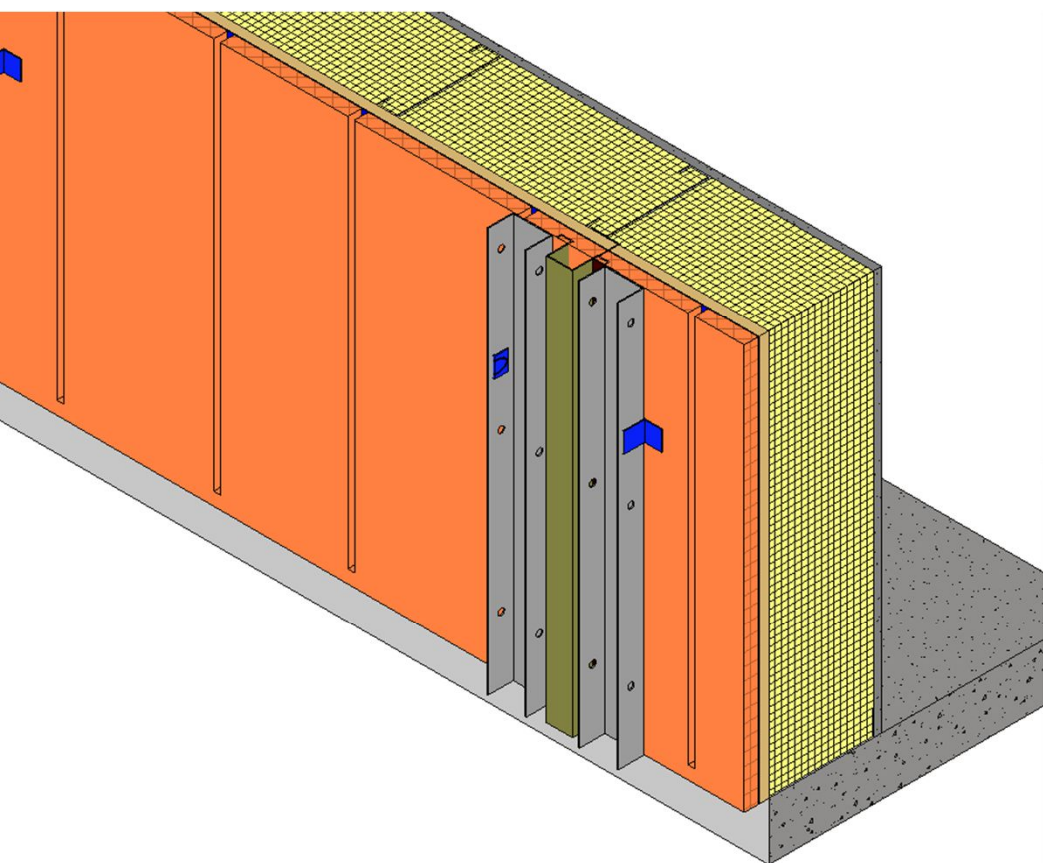


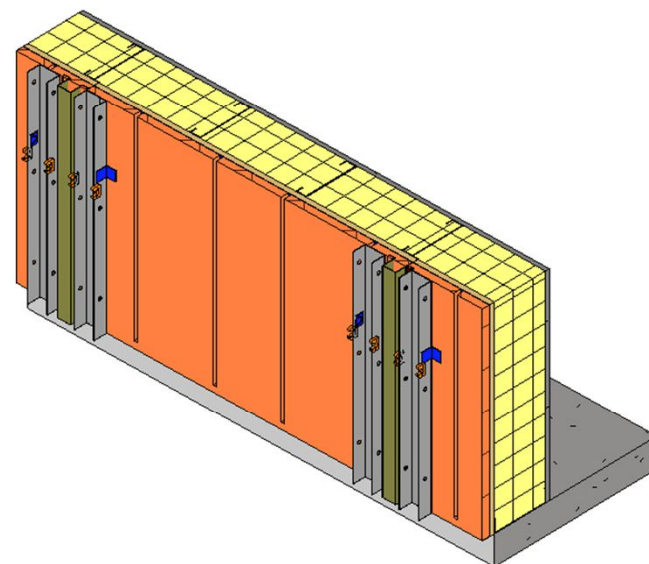
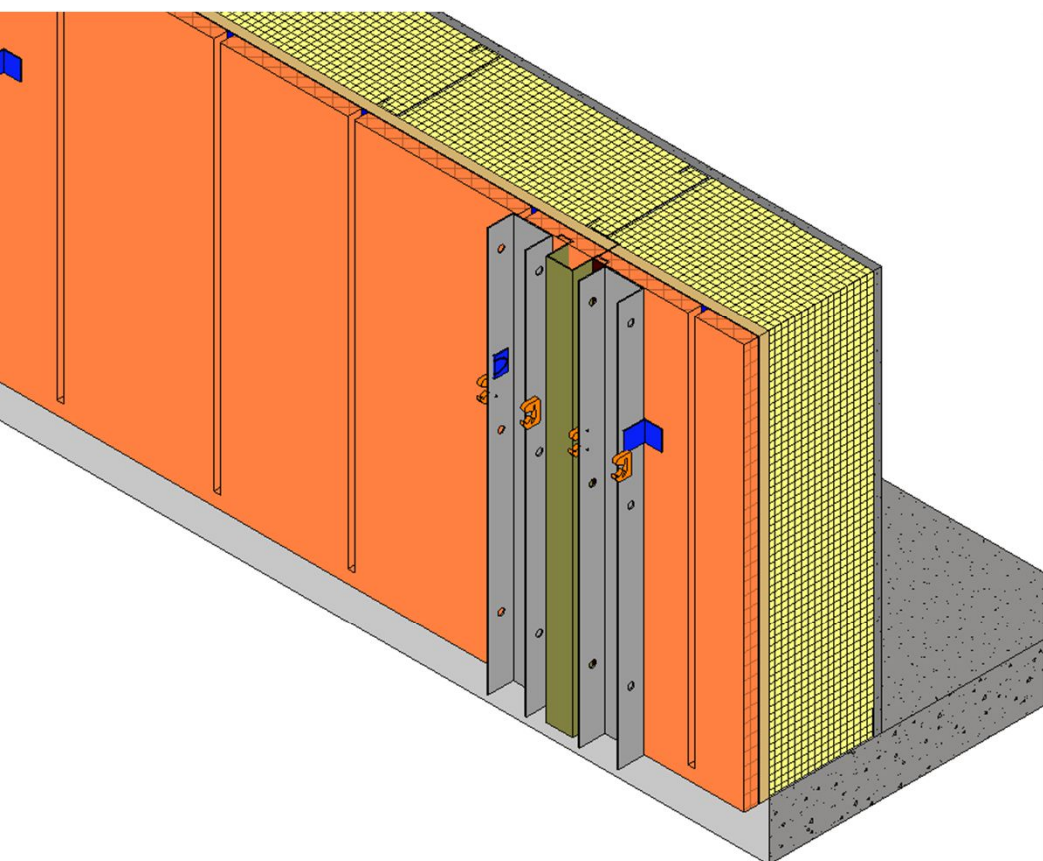


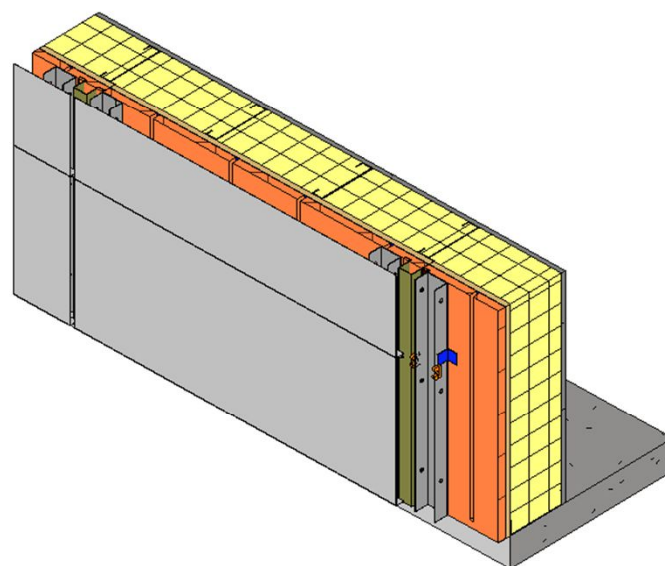
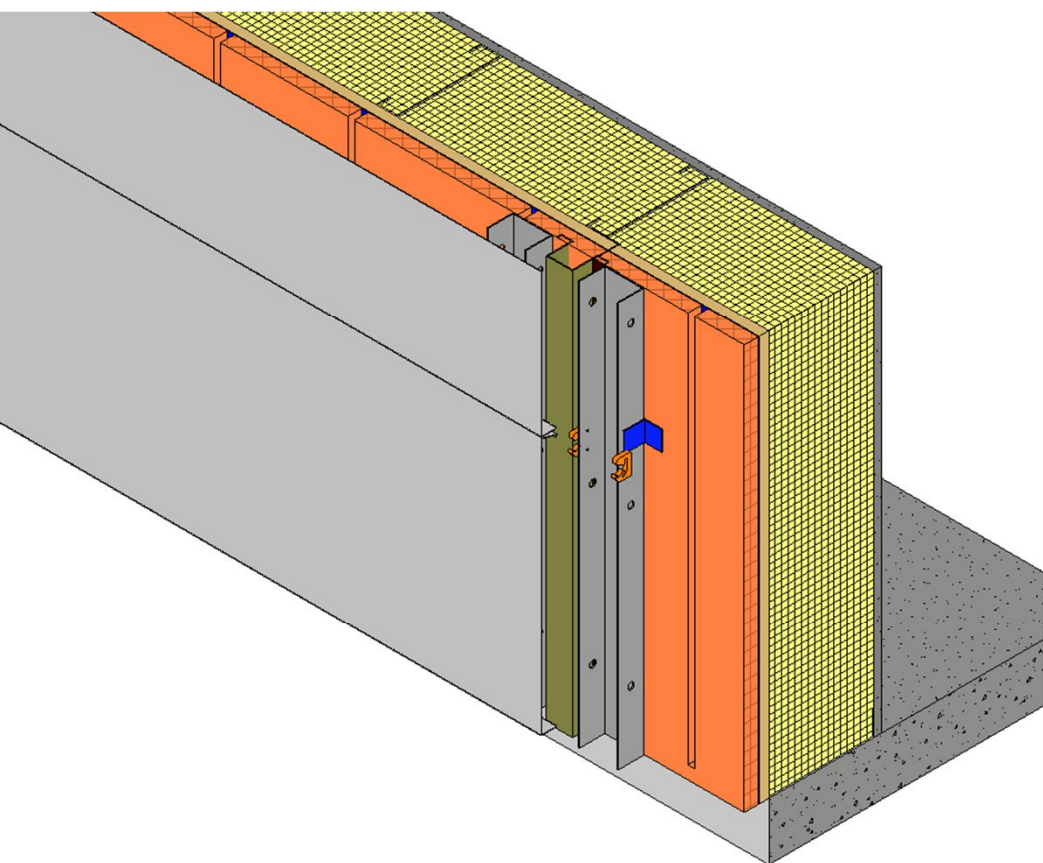


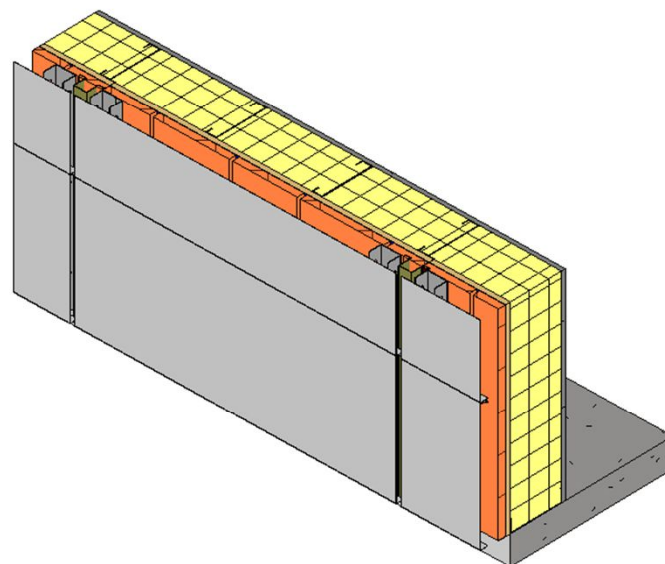
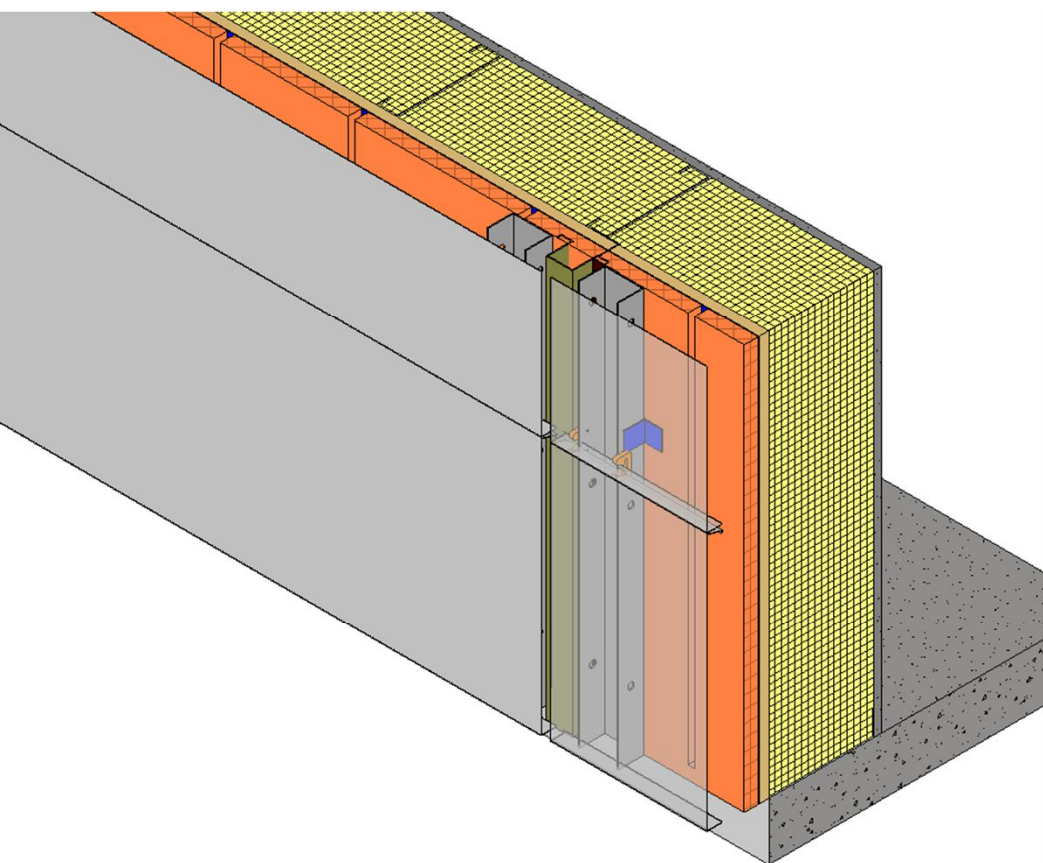














SOTAWALL®

Hybrid Curtain Wall Sotawall

Rubber Gasket

- makes sure its water proof seal
- It allows for expansion and contraction
- Prevents thermal transfer from the inside to the outside

