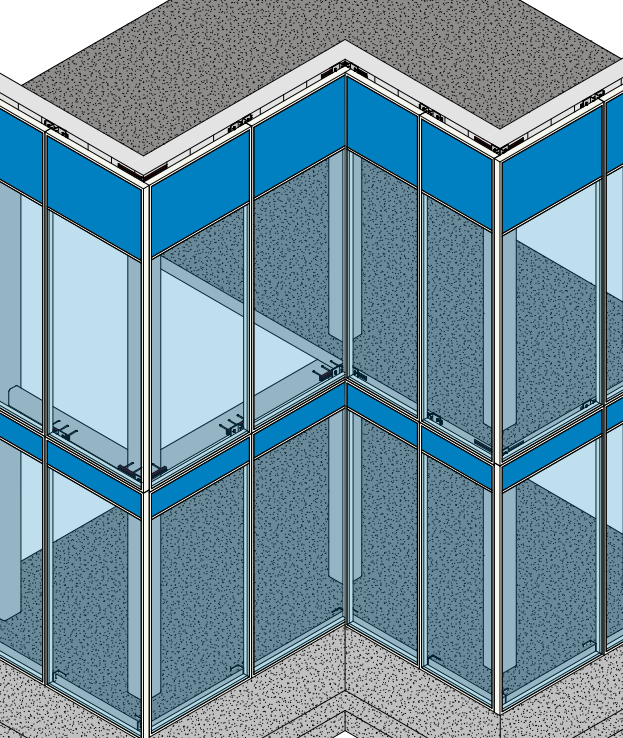
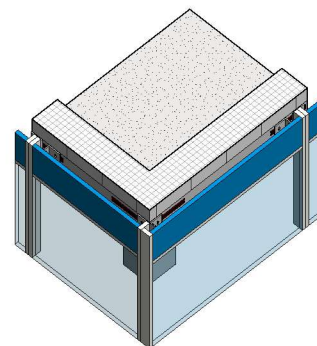
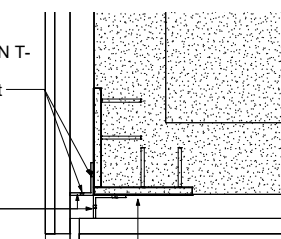
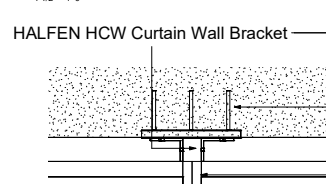
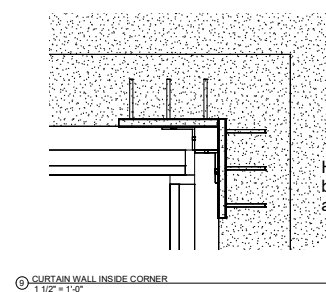
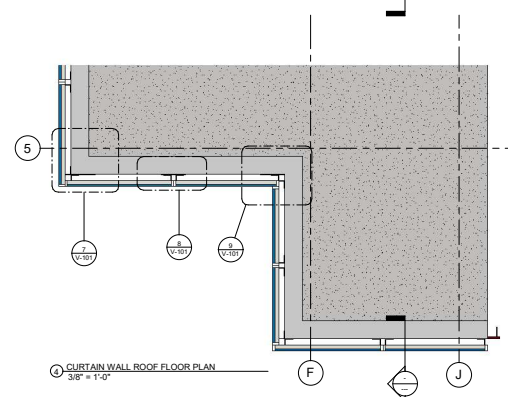
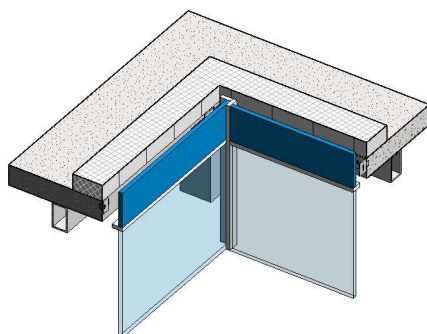
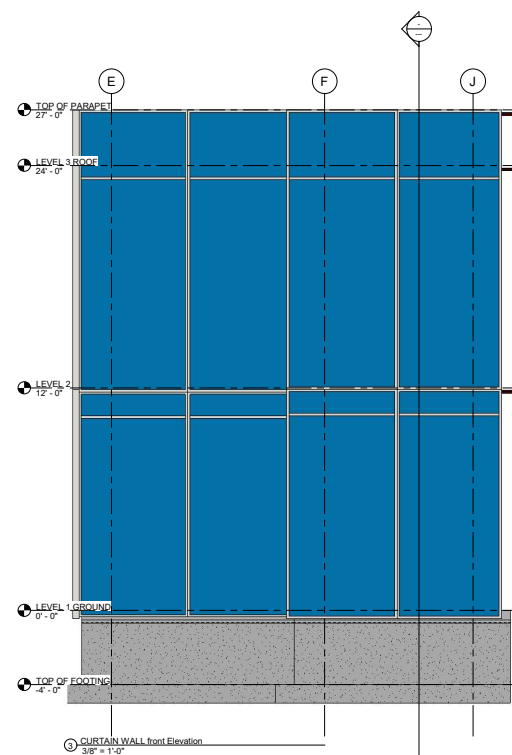
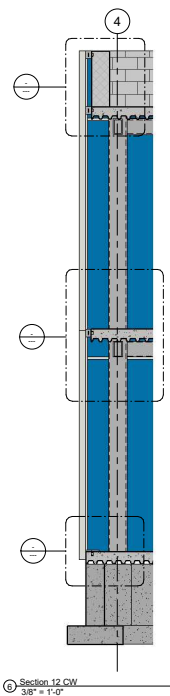


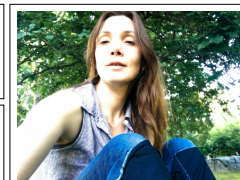
RELIANCE GLASS STAIN WALL STUDY



This isometric cutaway diagram illustrates the internal structure of a glass curtain wall. The wall is composed of large glass panels held together by a network of blue mullions and transoms. The entire assembly is supported by a thick, grey concrete base and a matching concrete floor slab. The diagram shows how the glass is anchored into the frame and how the structural elements are connected at the corners and intersections.



① CURTAIN WALL OUTSIDE CORNER
1 1/2" x 1 1/2"



Tea Khabelashvili