

OPAQUE WALL ASSEMBLY

RICHARD LEE, ARCH2431, PROF. KING

OPAQUE MATERIAL: VMZINC IN QUARTZ-ZINC.

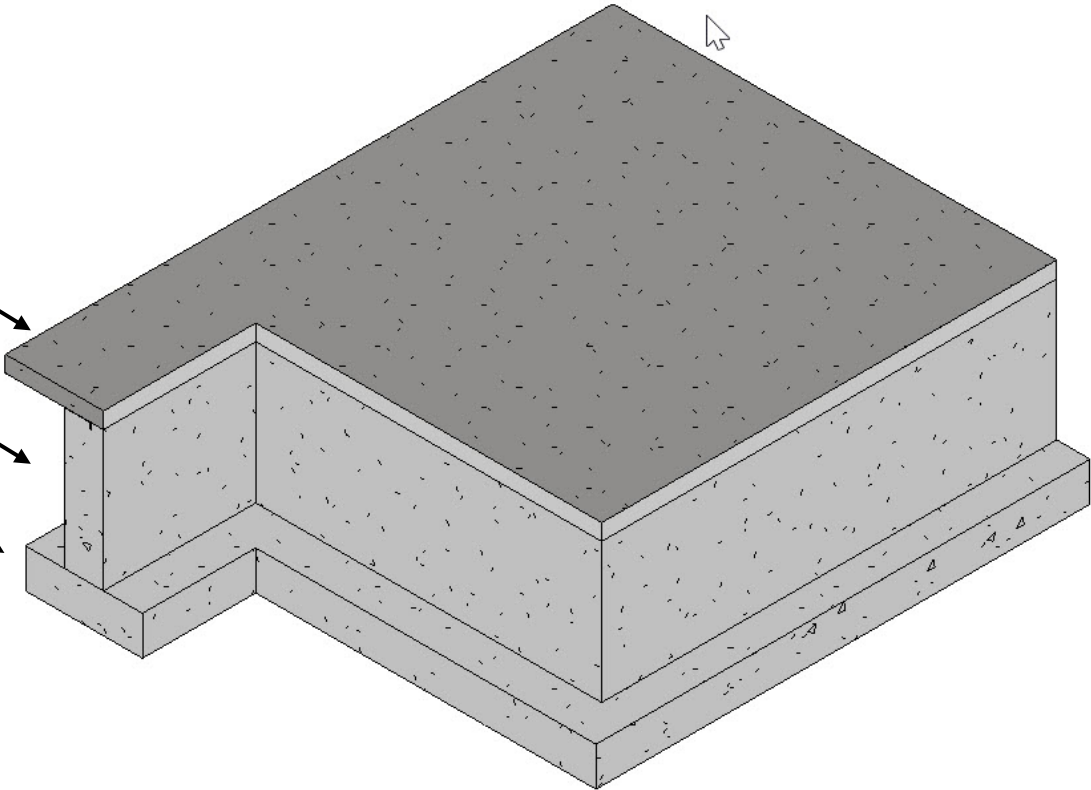
- SYSTEM DEPTH: 1 ¼" NOMINAL
- MATERIAL THICKNESS: 1MM, 1.5 MM
- PANEL JOINTS: ½ " NOMINAL STANDARD (1/8"- 1" AVAILABLE)
- FINISH: QUARTZ, ANTHRA, AZENGER, & PIGMENTO SERIES
- WEIGHT: LESS THAN 3LBS PER SQUARE FOOT

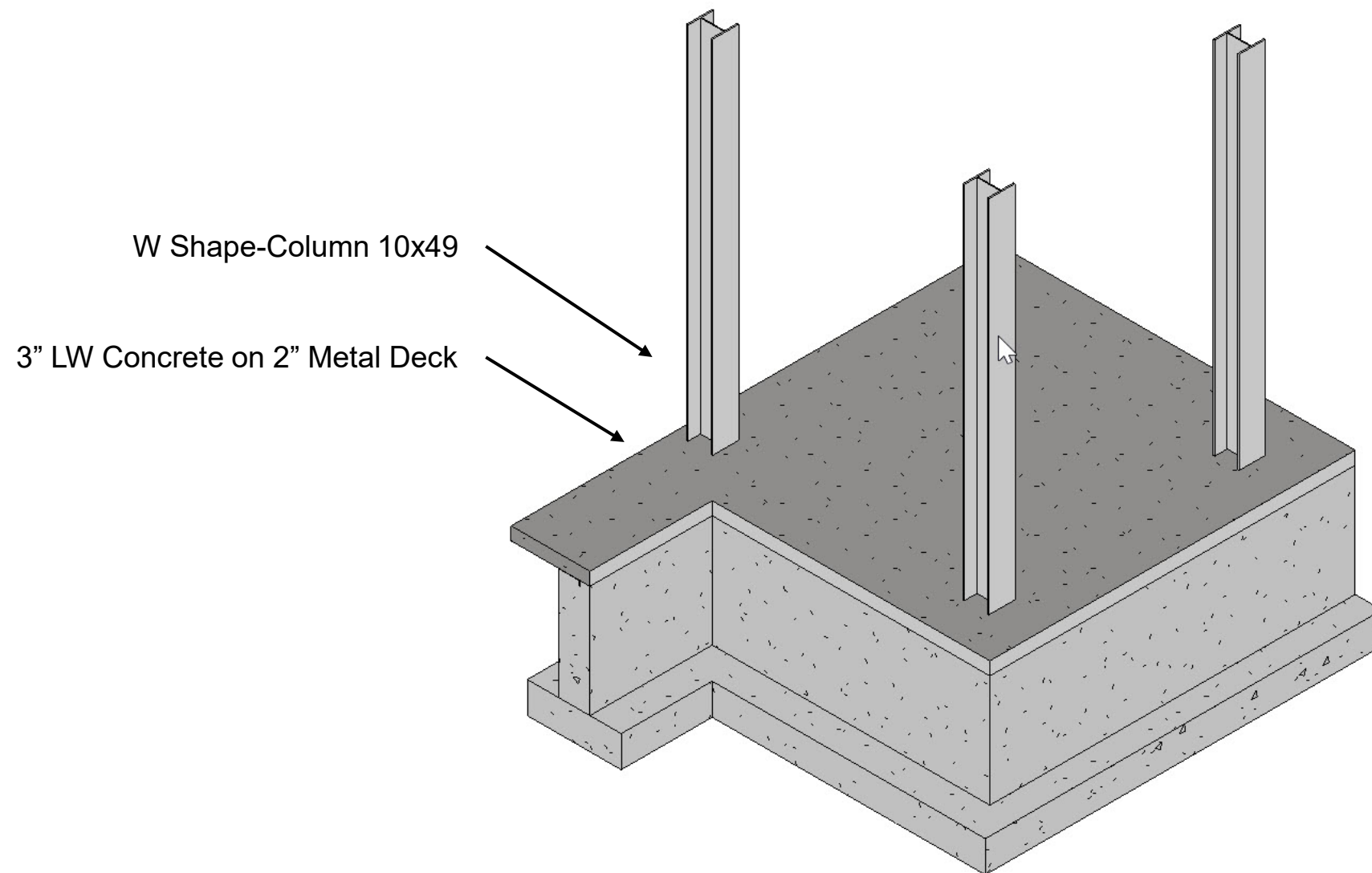


3" LW Concrete on 2" Metal Deck

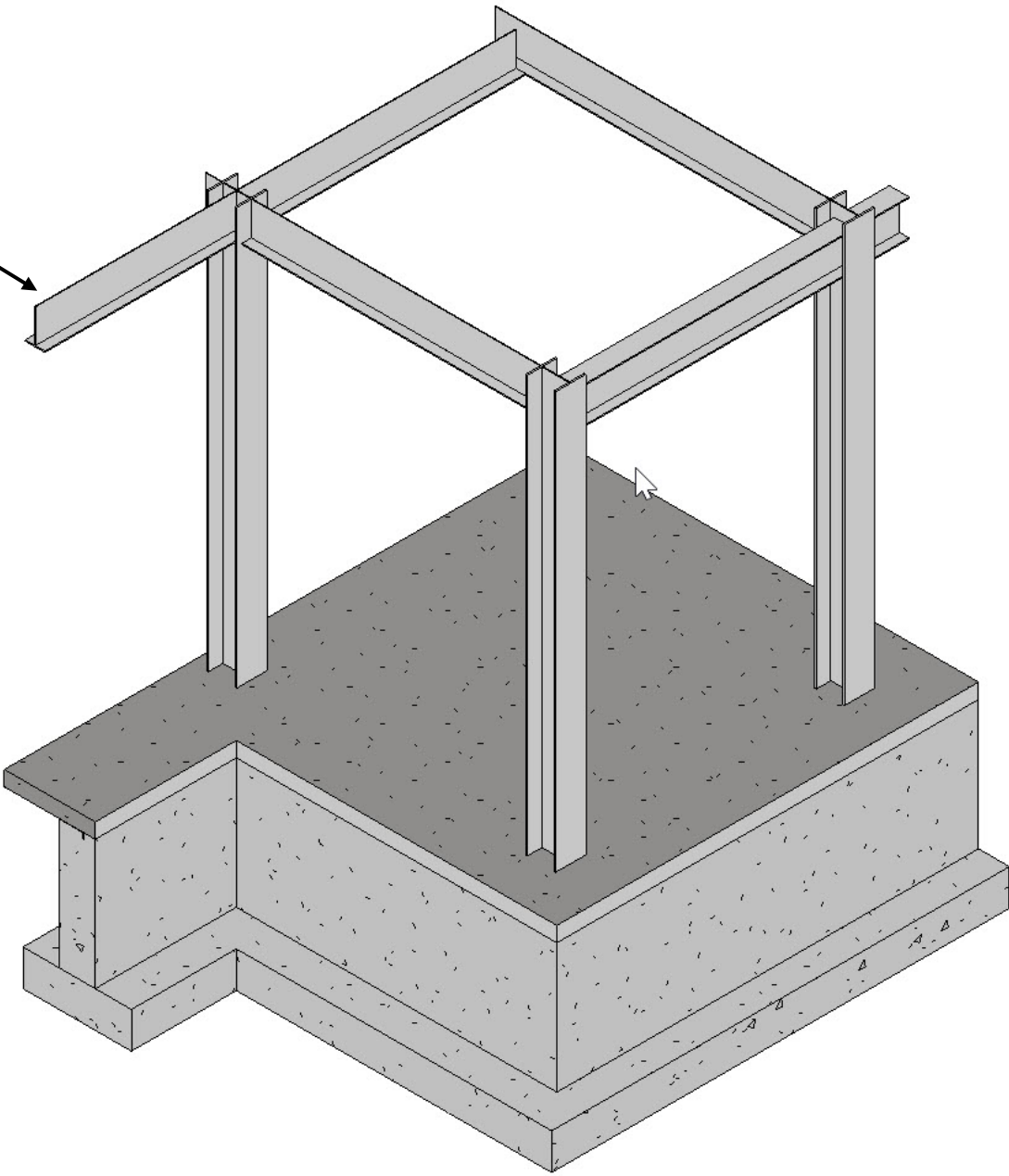
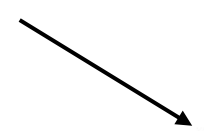
Concrete Foundation 12"

Bearing Footing- 36" x 12"

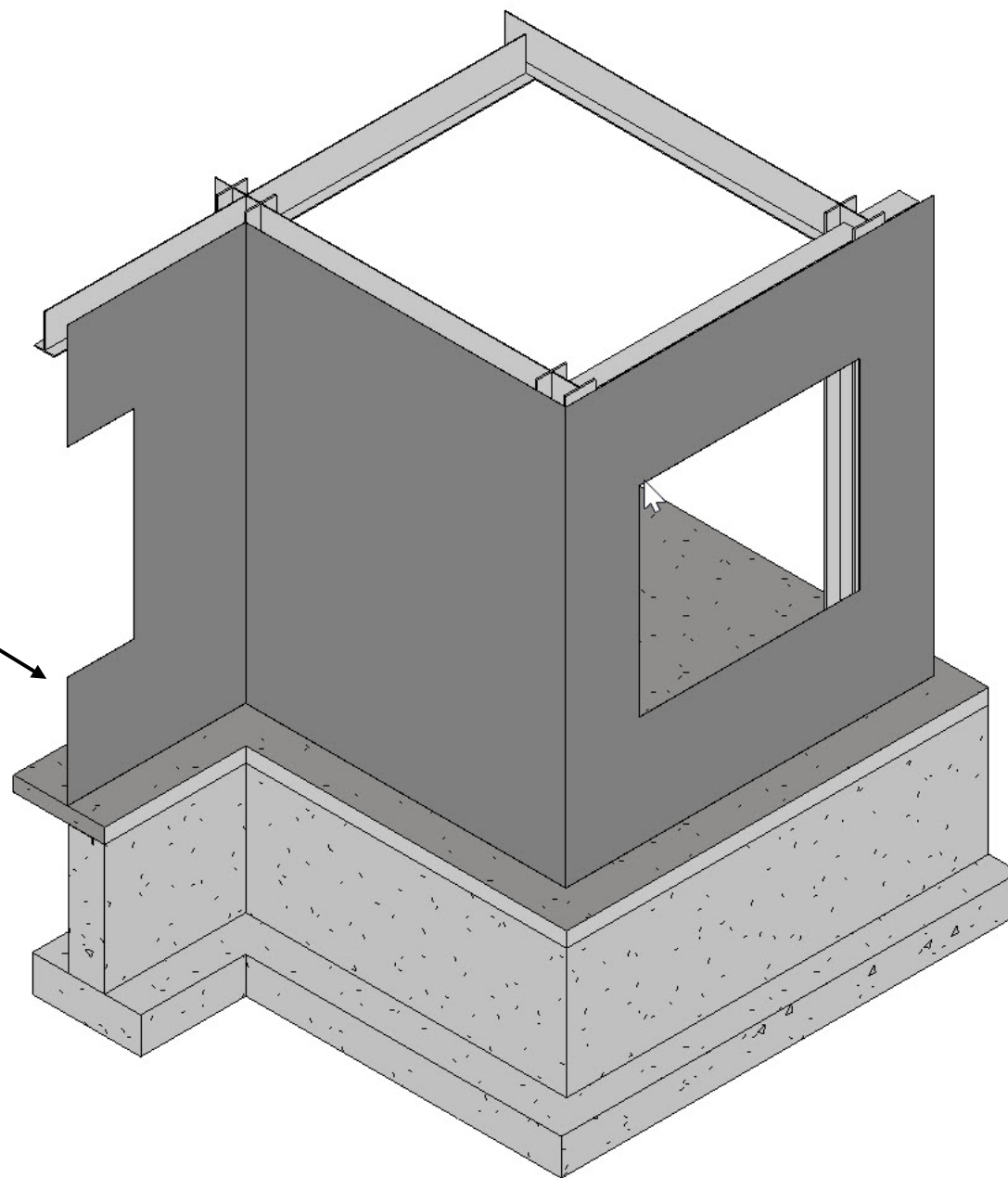




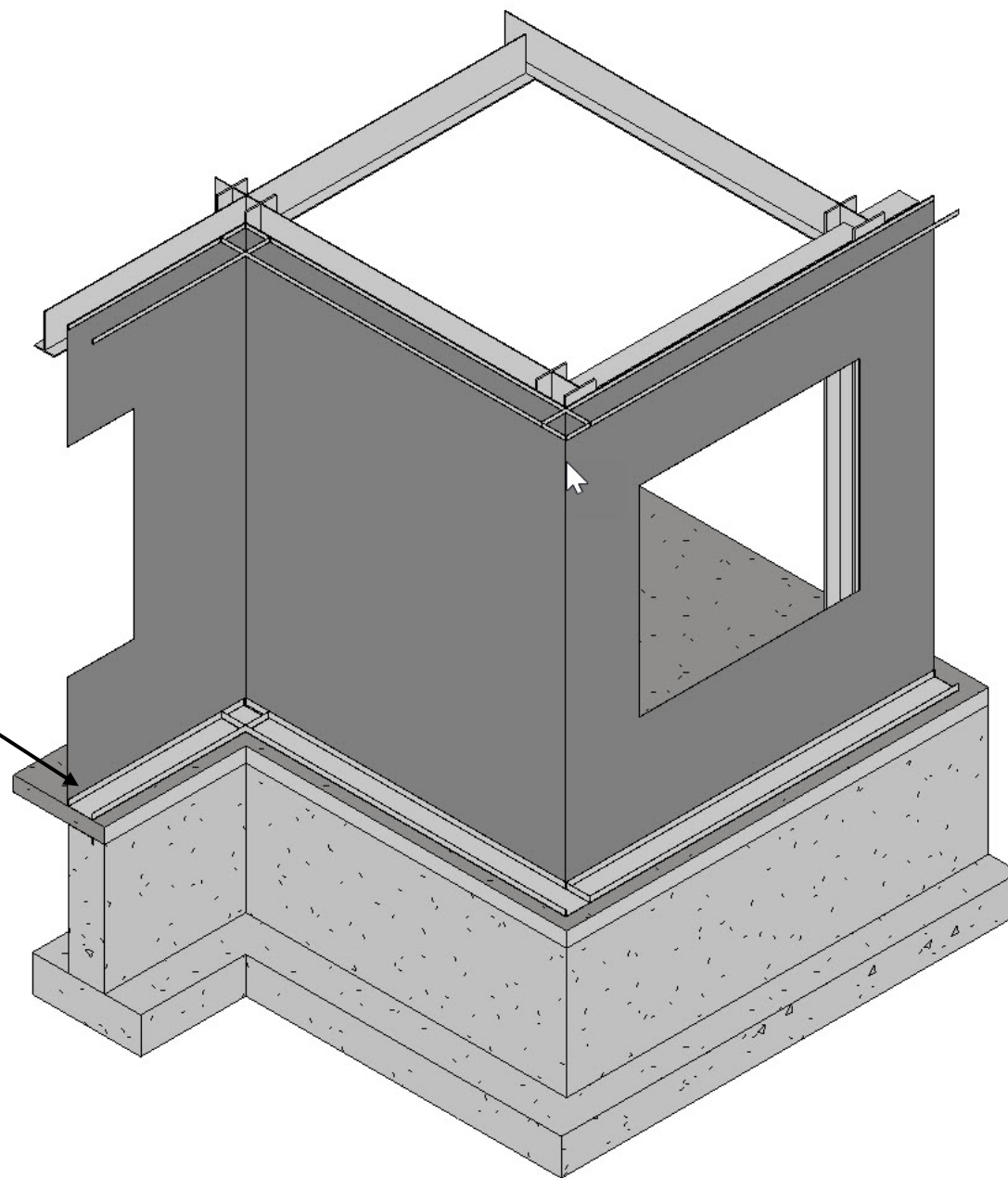
W Shape-Joist 12x26



Gypsum Backup Wall

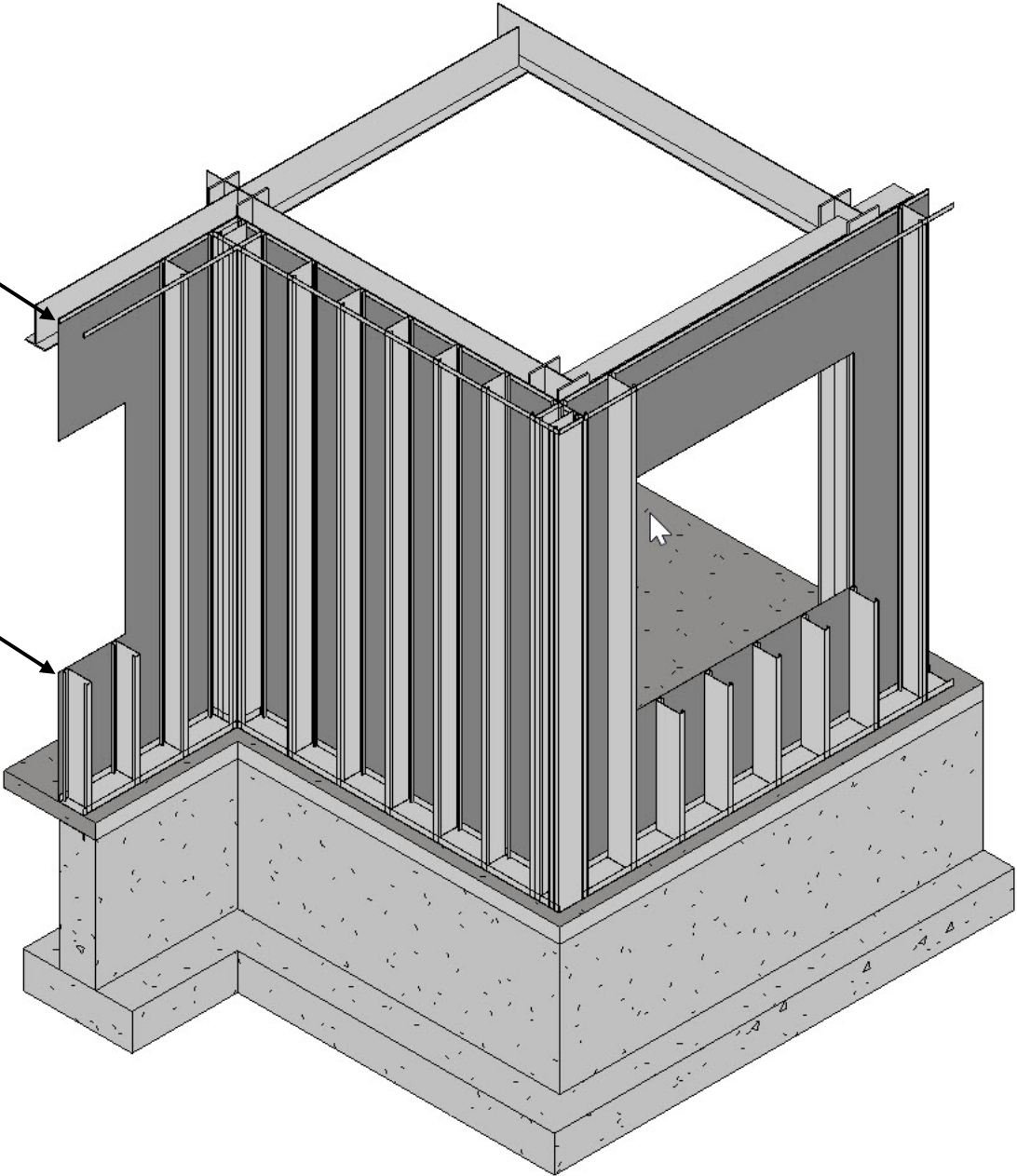


8" Track

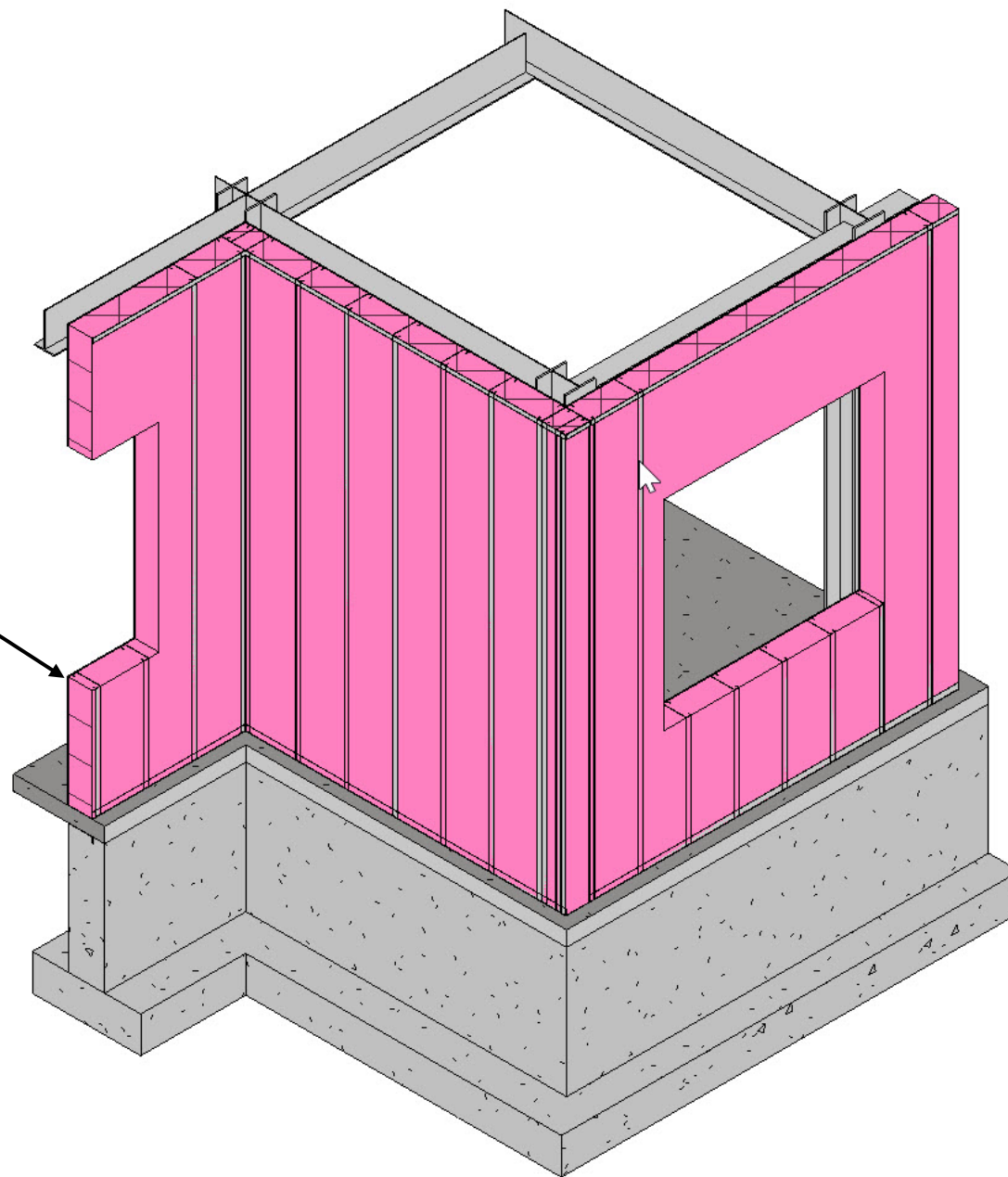


JA Upper Horizontal Track

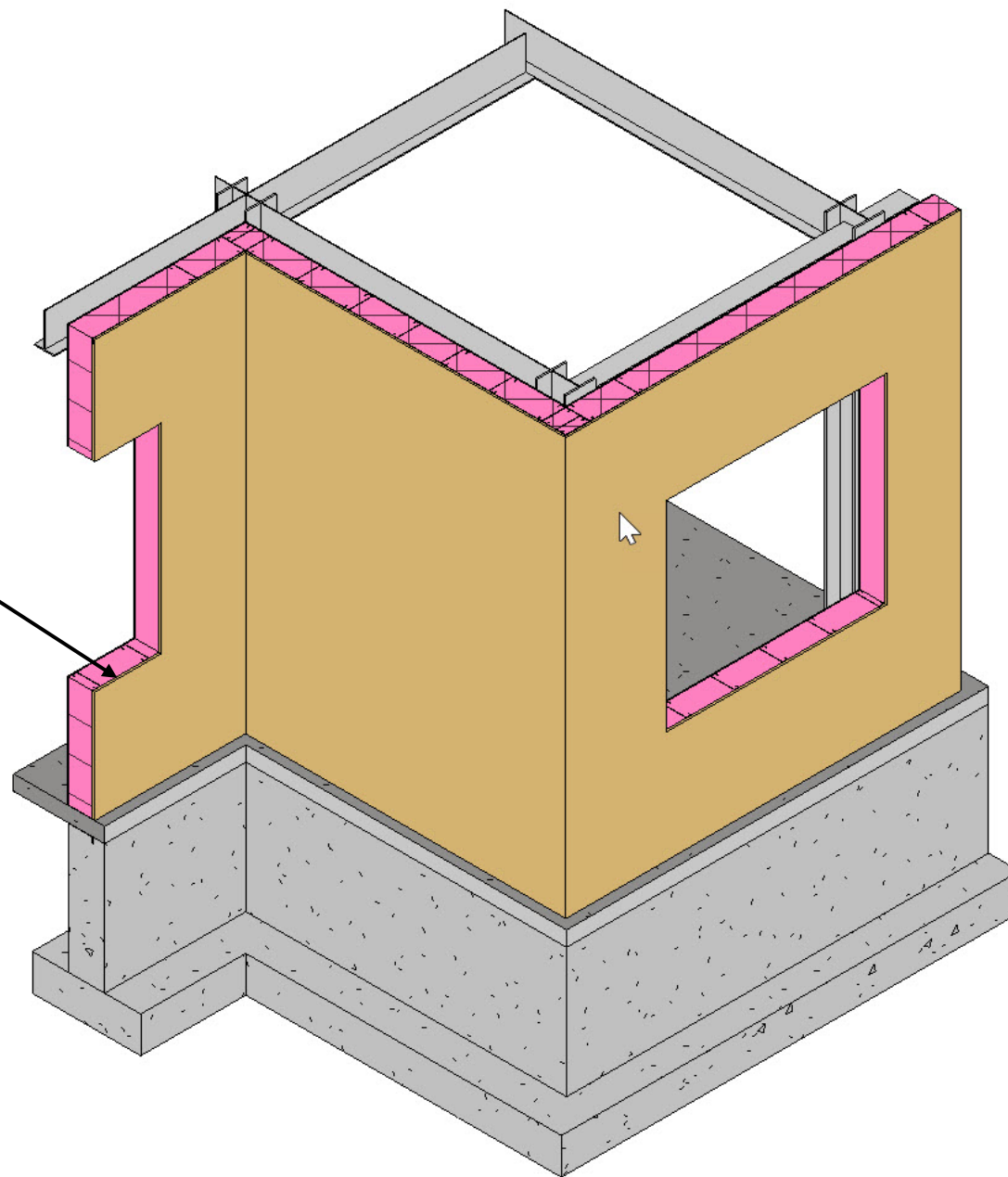
8" Wall Stud



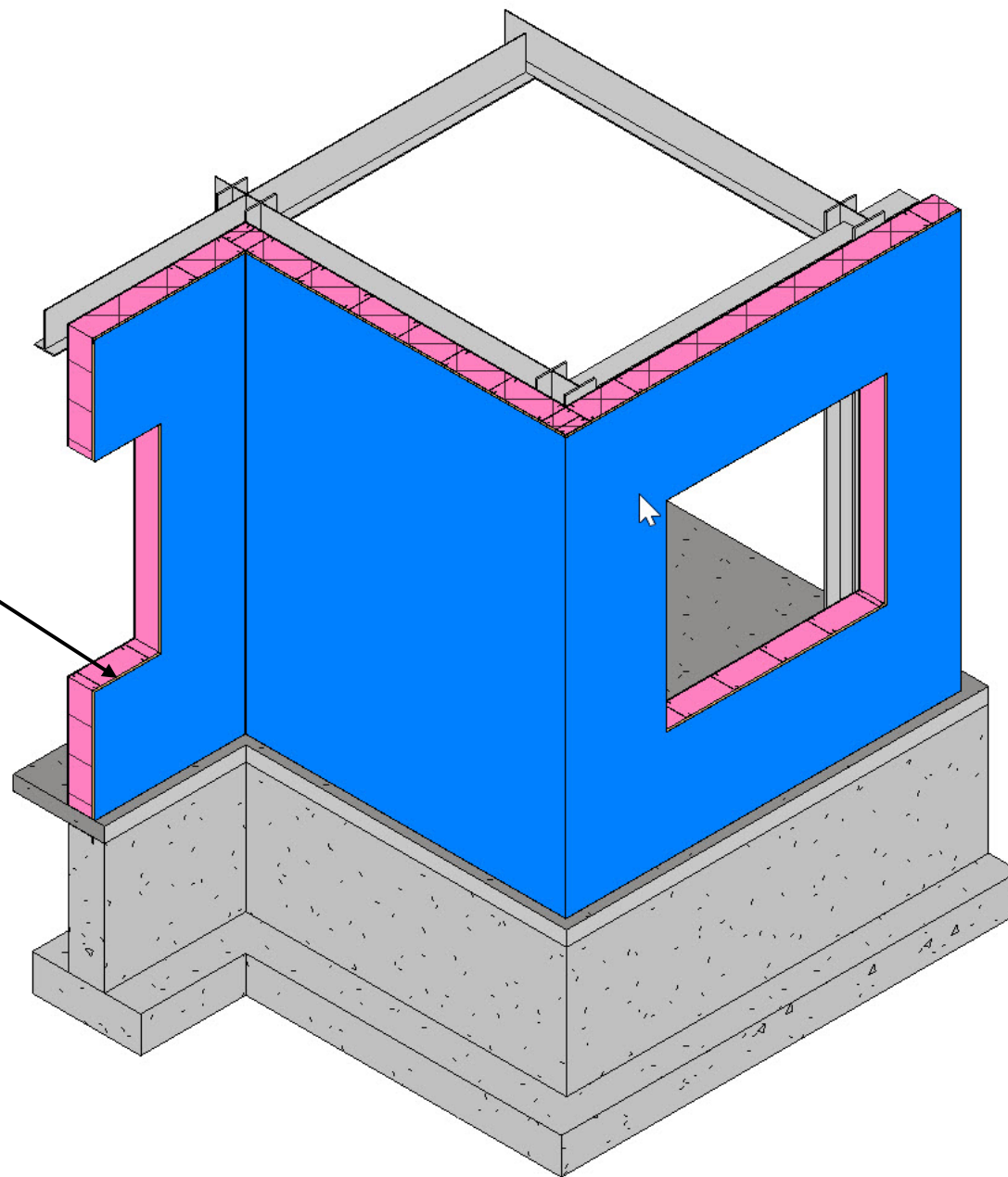
Backup Wall Insulation 8"

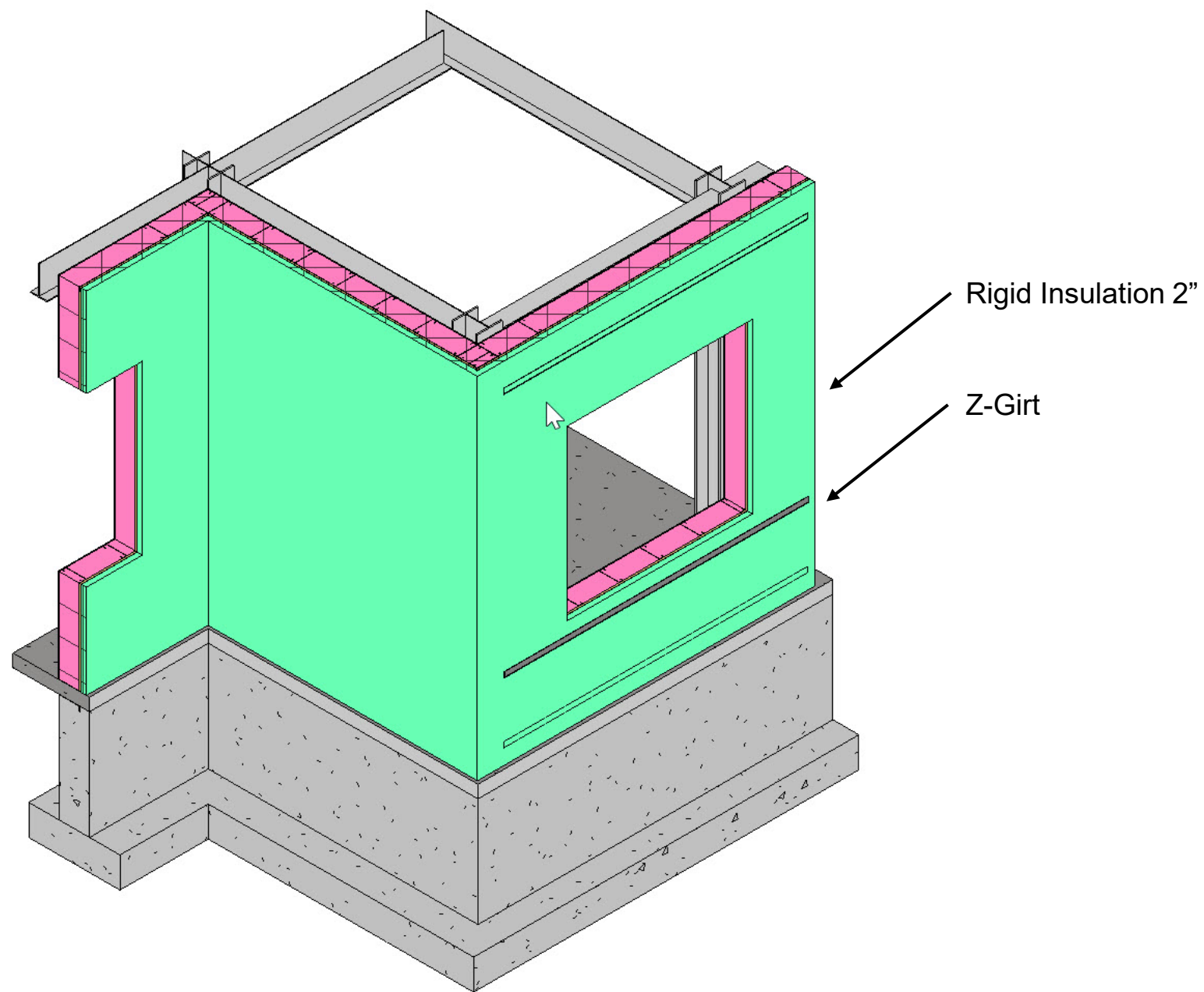


Backup Wall Sheathing

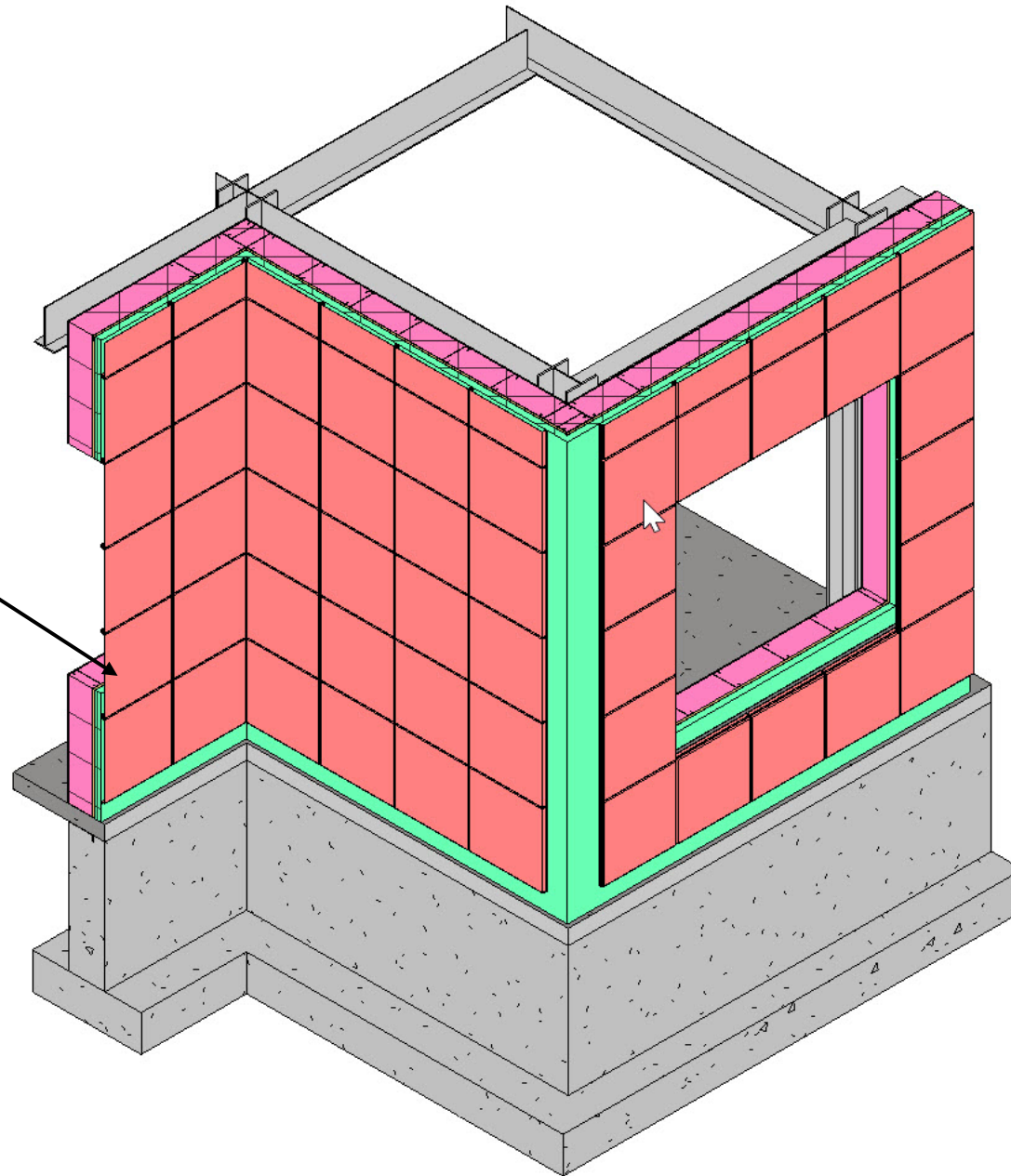


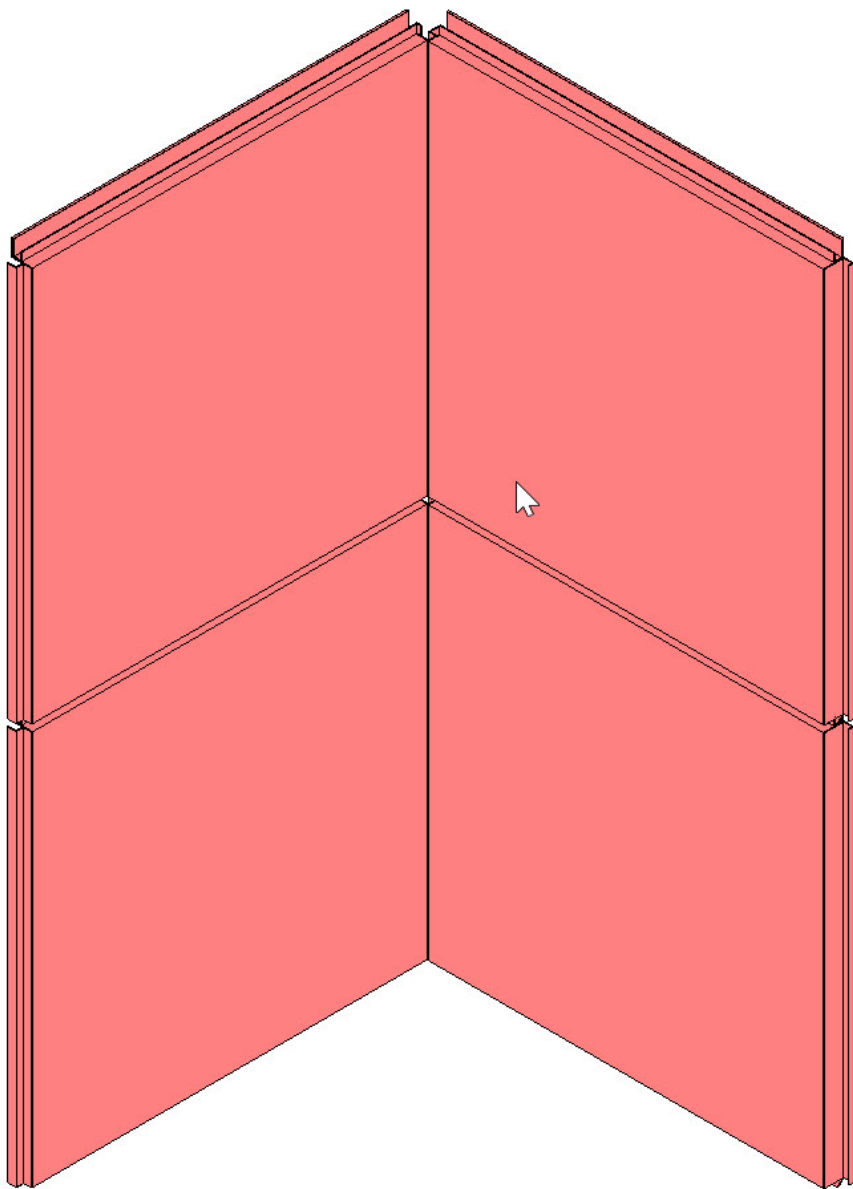
Backup Wall Weathering 1/16"



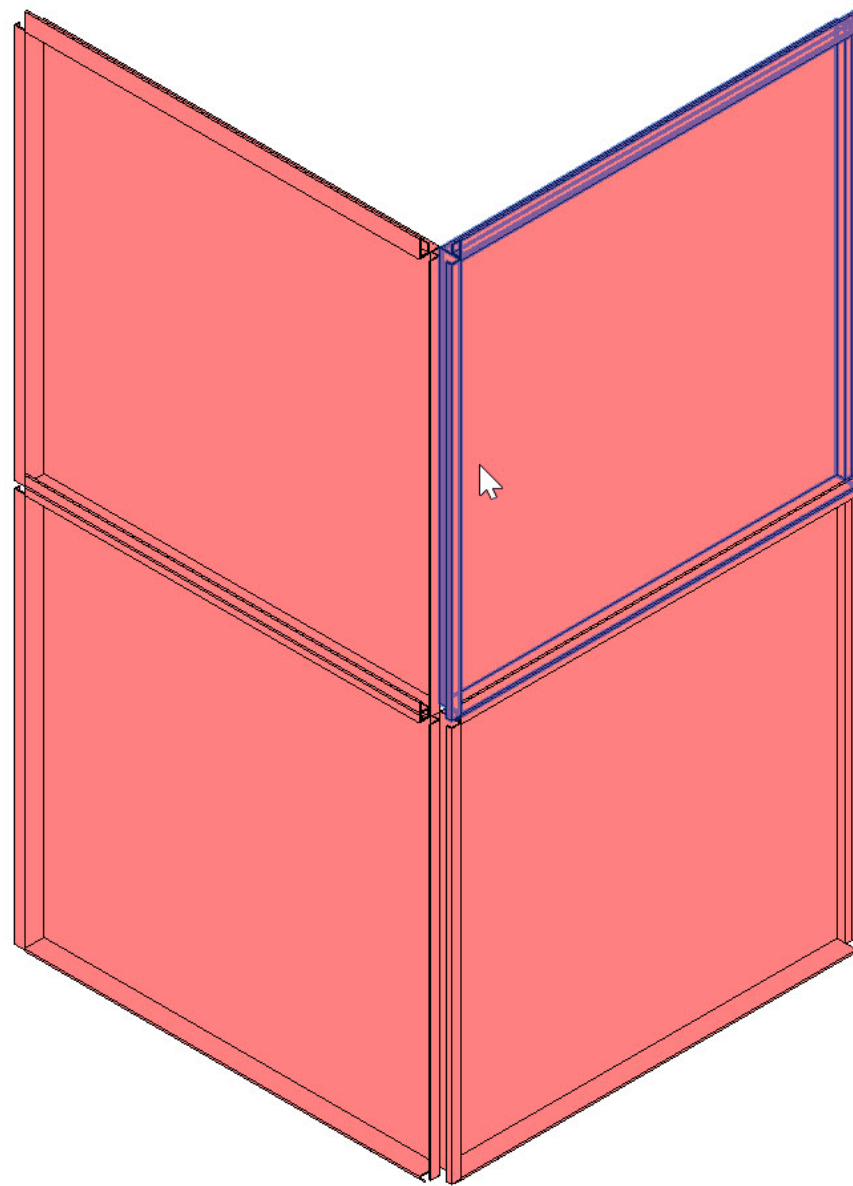


Quartz-Zinc Panel 24x24

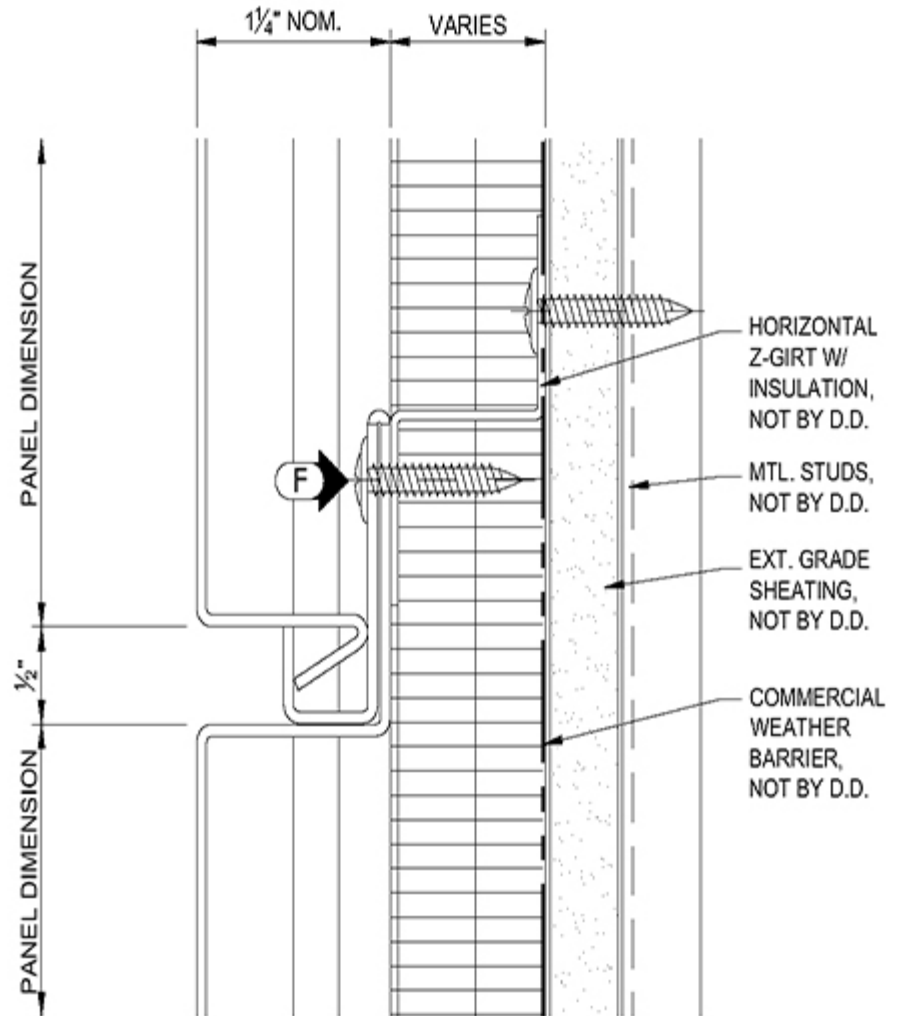




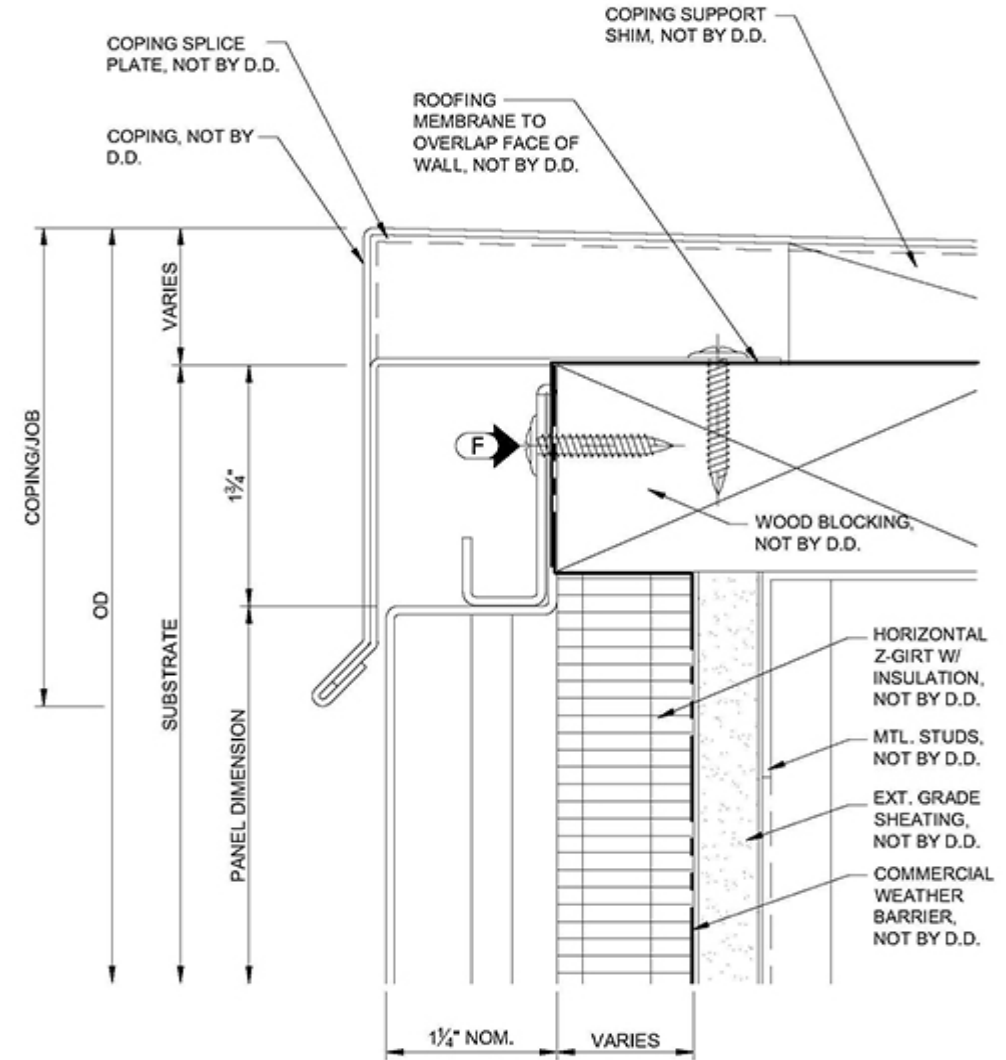
Inside Corner Condition(Front View)



Inside Corner Condition(Back View)



Panels being connected by the edges and being bolted by screws into the z-girt and rigid insulation. Another screw from the z-girt into the weathering & sheathing into the studs.



Coping being screw into the wood blocking & from the Roofing membrane.