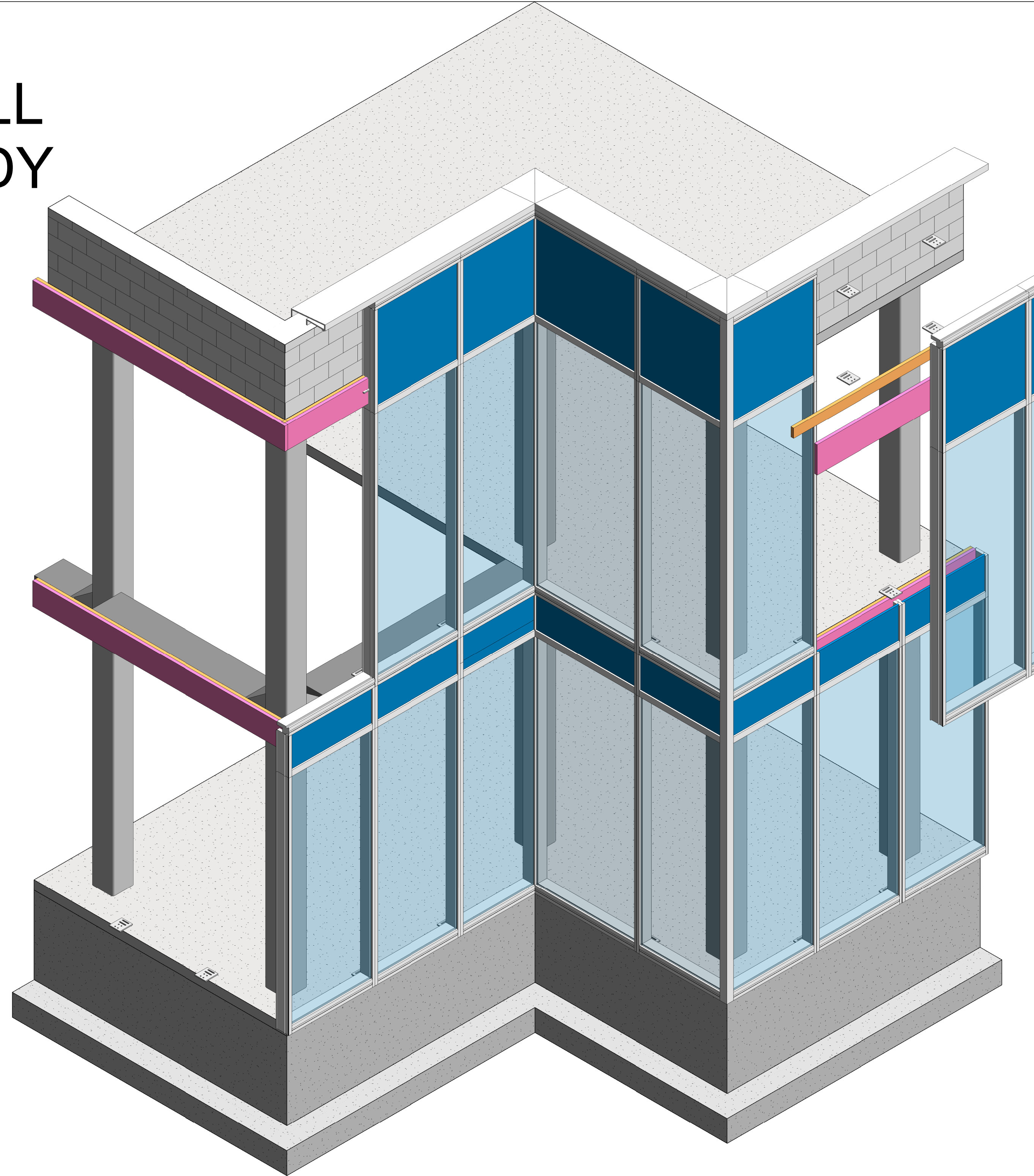
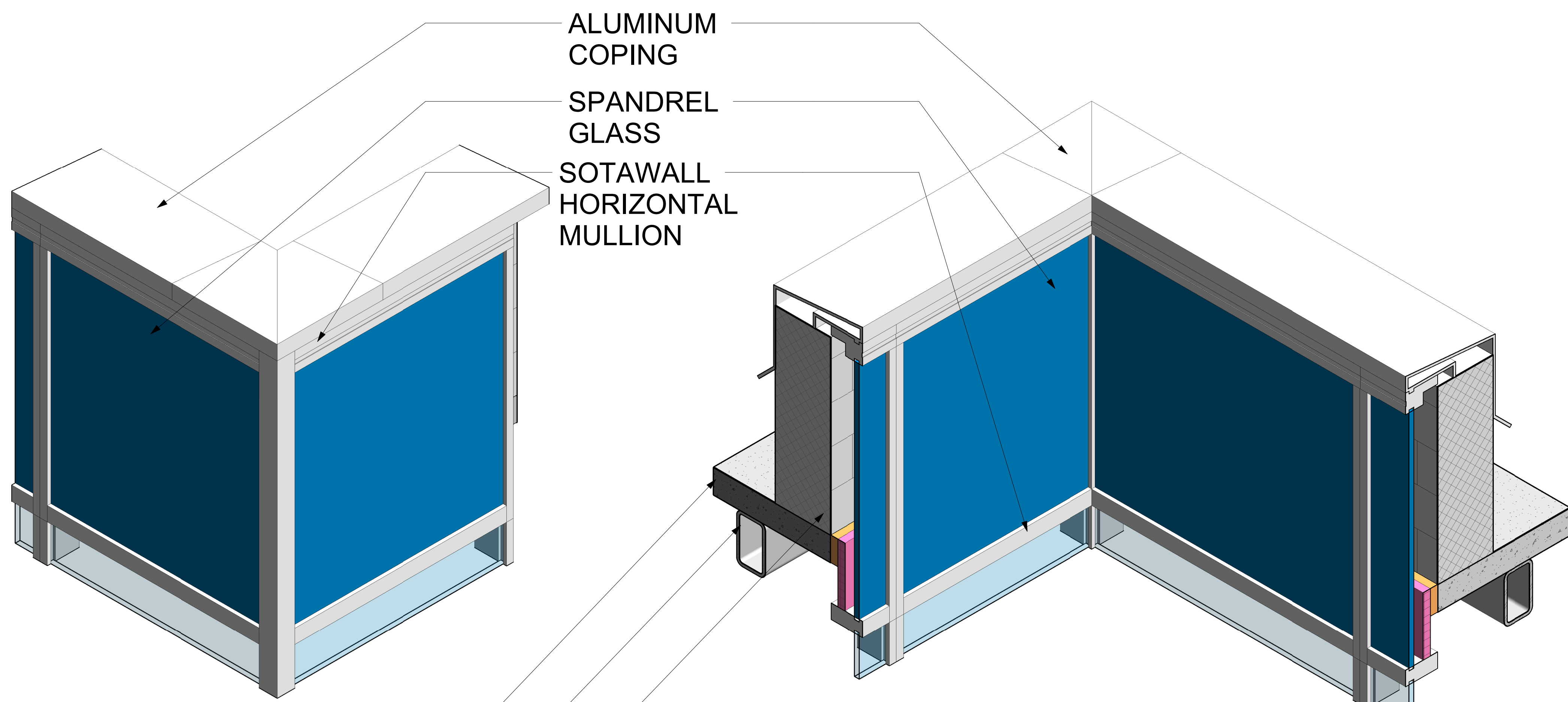


SOTAWALL  
HYBRIDWALL  
WALL STUDY



1 CURTAIN WALL ISOMETRIC EXPLODED

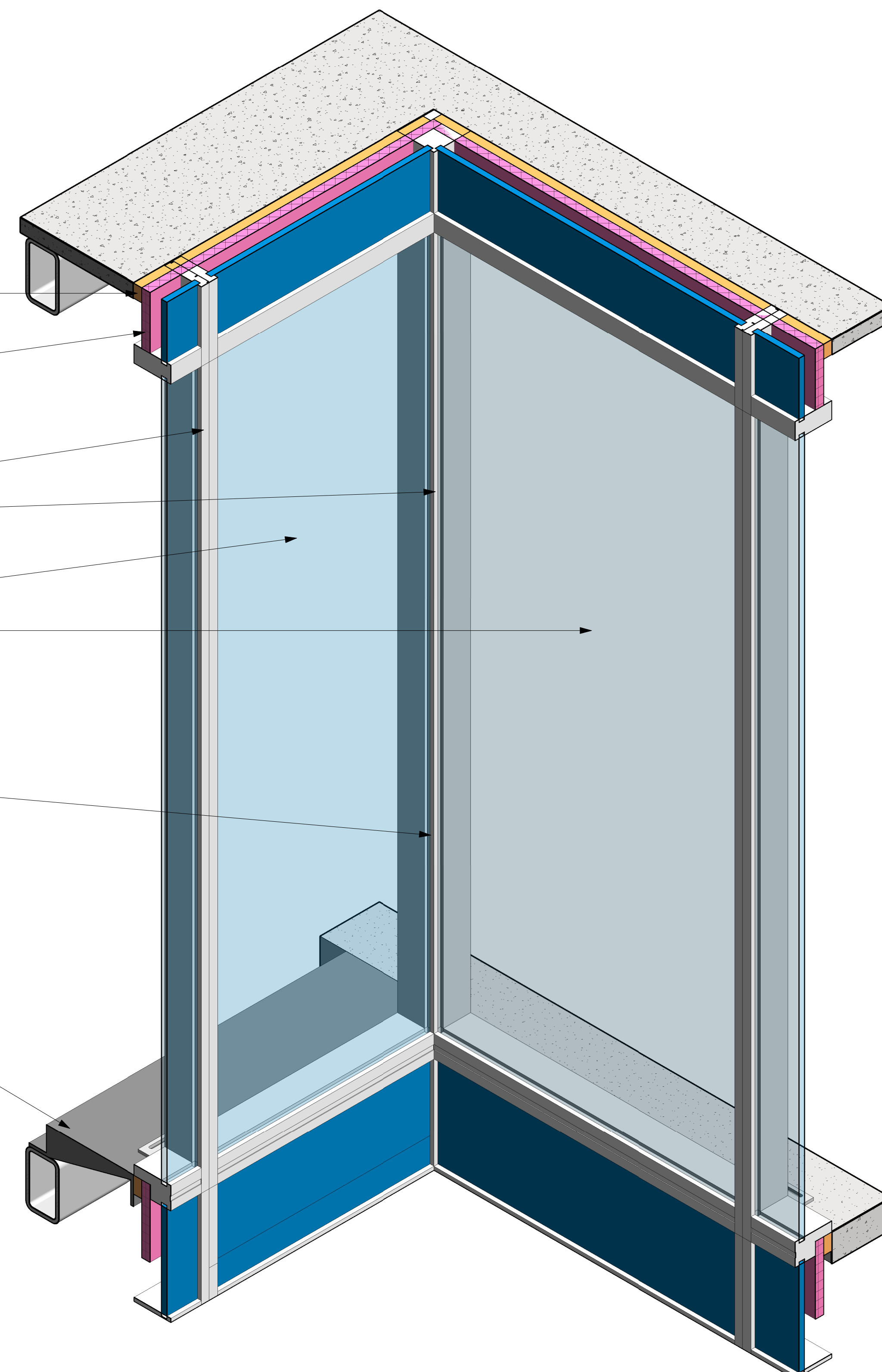


2 CURTAIN WALL OUTER CORNER  
PARAPET CONDITION

3 CURTAIN WALL INNER CORNER  
PARAPET CONDITION

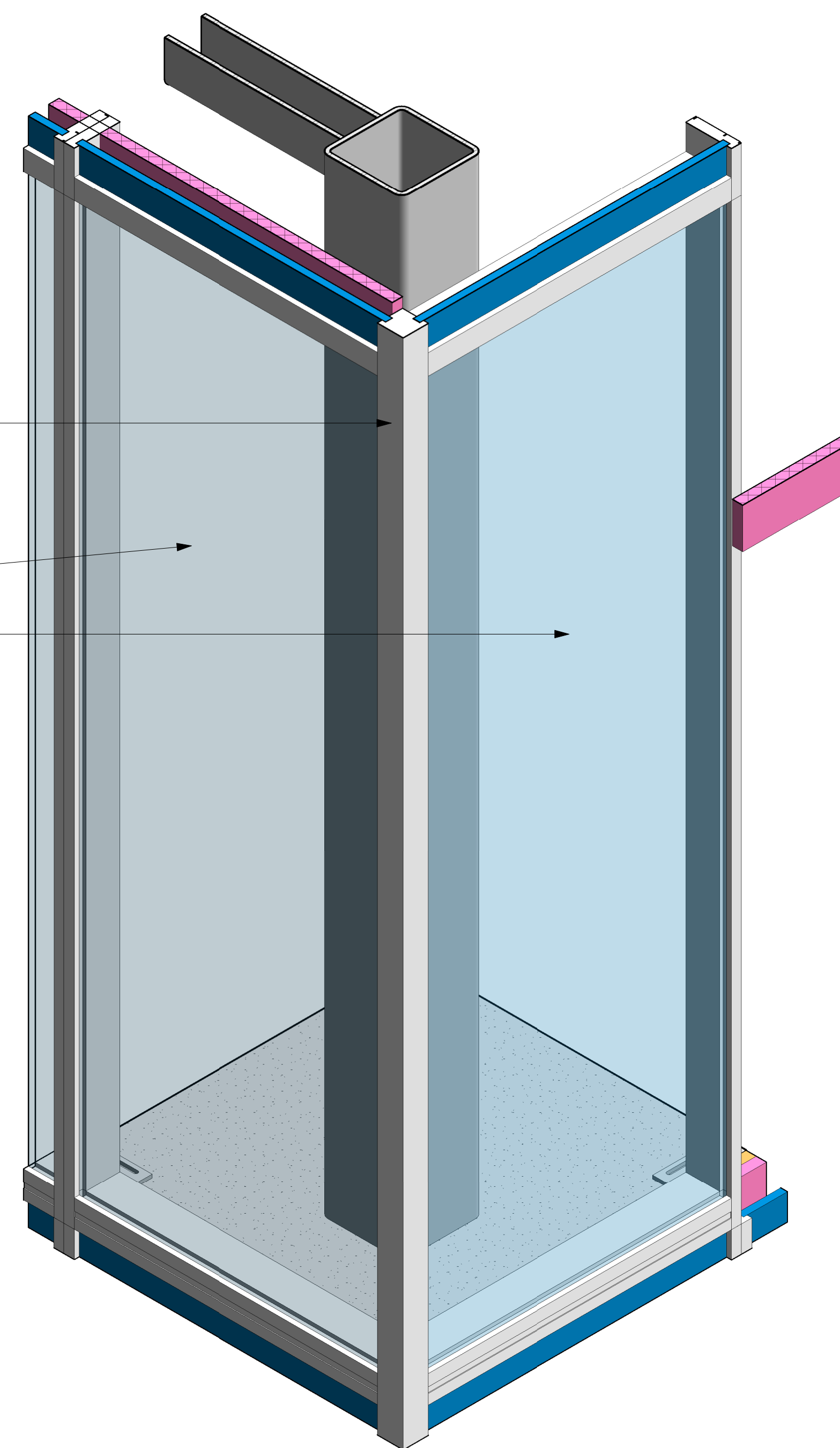
5" CONCRETE SLAB  
HOLLOW STEEL TUBE  
BEAM  
CMU PARAPET WALL

ROCKWOOL FIRE  
PROOFING  
OWNES CORNING RIGID  
INSULATION  
SOTAWALL VERTICAL  
MULLION  
DOUBLE PANE VISION  
GLASS  
INNER CORNER MULLION  
STEEL BRACKET BOLTED  
TO HOLLOW TUBE BEAM  
AND TO CURTAIN UNIT



4 CURTAIN WALL INNER CORNER  
CONDITION

OUTER CORNER MULLION  
DOUBLE PANE VISION  
GLASS



5 CURTAIN WALL OUTER CORNER  
CONDITION

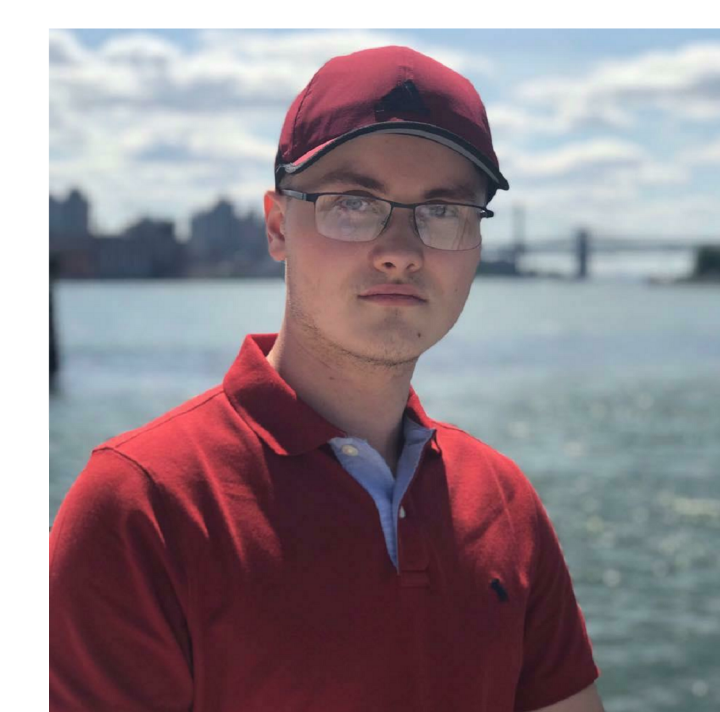
GLASS CURTAIN  
WALL STUDY

Checked By PROF. PAUL C. KING  
Drawn By DOMINIK JABLONSKI  
Date 5/21/20  
Scale  
Project Number

V-102B

PAUL C. KING

PROF. PAUL C. KING  
ARCH.2431 BUILDING  
TECHNOLOGY III  
SECTION: D620



DOMINIK JABLONSKI