

Façade Materials Presentation

Emmanuel Estevez
ARCH 2431 Building Technology III
Prof. Paul King
Spring Semester 2020

Sintered Stone Neolith Panels

Nordstrom Mall

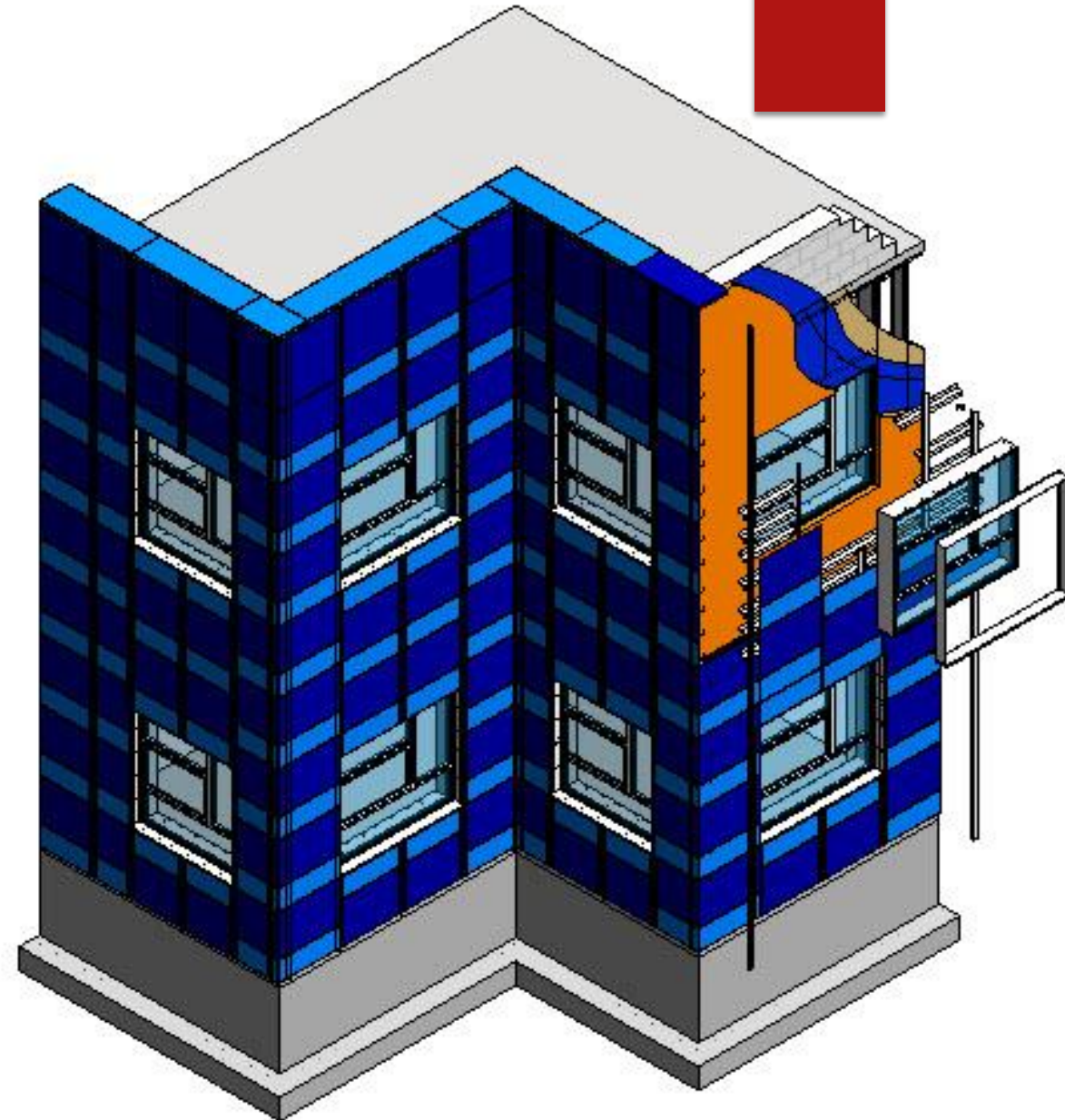
Located: Ottawa Canada

Designed By: Callison Architects



Neolith HC System – Technical features

- ▶ Waterproof and resistant to liquids, with an absorption level of almost zero.
- ▶ Its hard surface makes it resistant to scratches and abrasion.
- ▶ It does not burn in contact with fire nor does it emit smoke or toxic substances when subjected to high temperatures.
- ▶ It does not give off any substances that are harmful to the environment (100% Natural).
- ▶ Being 100% natural, its colors do not fade away when being exposed to sun light or other extreme weather conditions.
- ▶ It has a high shear rate, making it resistant to heavy loads and pressure.



Sintered Stone Panels



Panel types and sizes

- "A" 3' x 2'
- "B" 3' x 1'
- "a" 3' 0 1/16" x 2'
- "b" 3' 0 1/16" x 1'
- "a1" 2' 2 9/16" x 2'
- "b1" 2' 2 9/16" x 1'
- "A1" 3' 0 1/16" x 3' 0 1/2"
- "A2" 6' x 3' 0 1/2"
- "A3" 2' 6 1/32" x 3' 0 1/2"
- "C" 2' 6" x 2'
- "D" 2' 6" x 1'
- "c" 3' x 2'
- "d" 3' x 1'
- "c1" 2' 2 9/16" x 2'
- "d1" 2' 2 9/16" x 1'
- "D1" 5' x 3' 0 1/2"
- "D2" 1' 8 9/16" x 3' 0 1/2"
- "D3" 2' 2 9/16" x 3' 0 1/2"

