

OPAQUE FAÇADE AND CURTAIN WALL ANIMATION PROCESS

DOLMA TSERING

DRI – DESIGN METAL PANEL – VM ZINC METAL PANEL OPAQUE FAÇADE SYSTEM

DOLMA TSERING

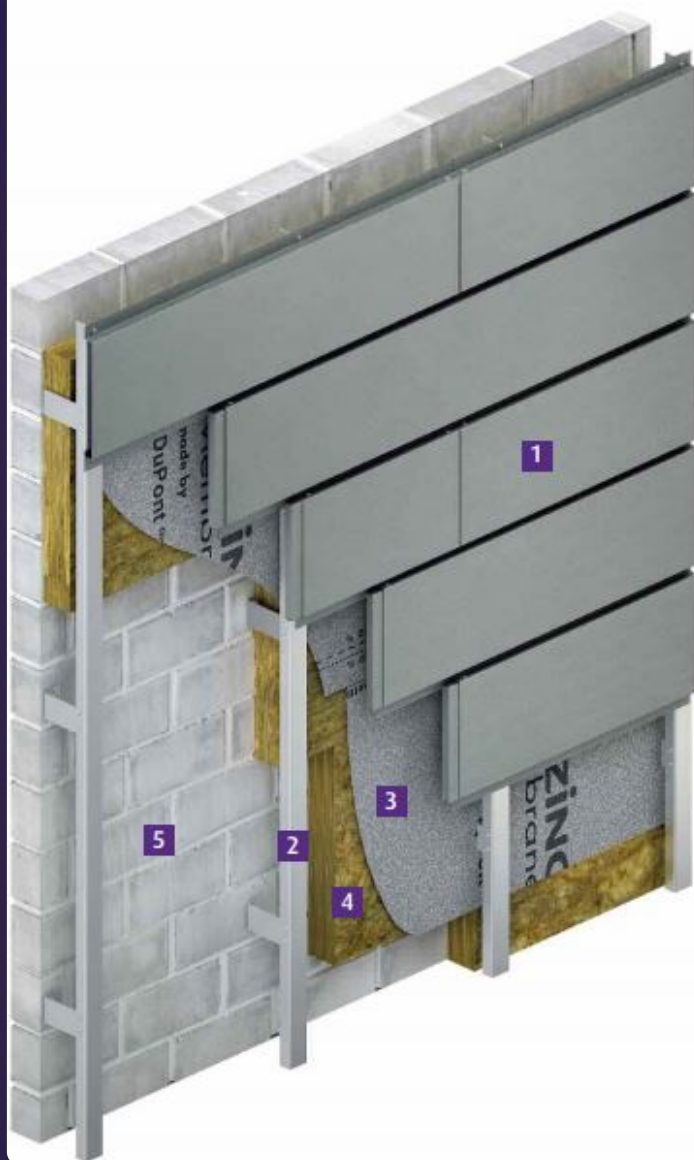
WATERPROOFING

VMZIN CPANELS ARE VENTILATED TO ALLOW CO₂ TO ALLOW THE FORMATION OF PROTECTIVE PATINA

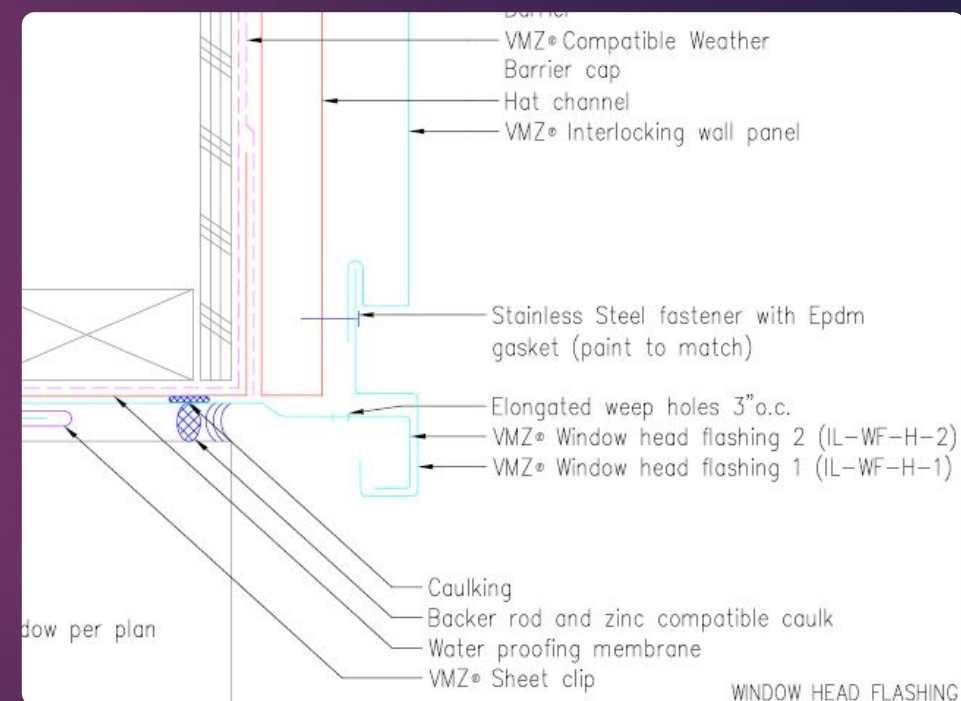
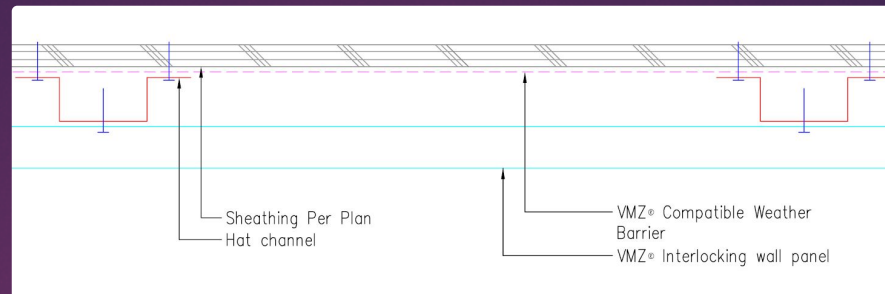
PROTECTIVE COATING ON THE UNDERSIDE APPLIED IN THE FACTORY

USE OF VAPOR RETARDEANT OR WATER PROOFING MEMBRANES TO LIMIT THE TRANSFER OF WATER VAPOR

VM ZINC MEMBRANE HELPS TO PROTECT AGAINST AIR AND WATER INFILTRATION.



- 1** VMZINC interlocking panels
- 2** Metal framing creating a vented 38mm airspace
- 3** VMZINC Membrane
- 4** Insulation
- 5** Supporting structure



<https://www.associatedlead.co.uk/wp-content/uploads/2017/06/vmzinc-facades-feb-2017-uk-2.pdf>

FIRE PROOFING

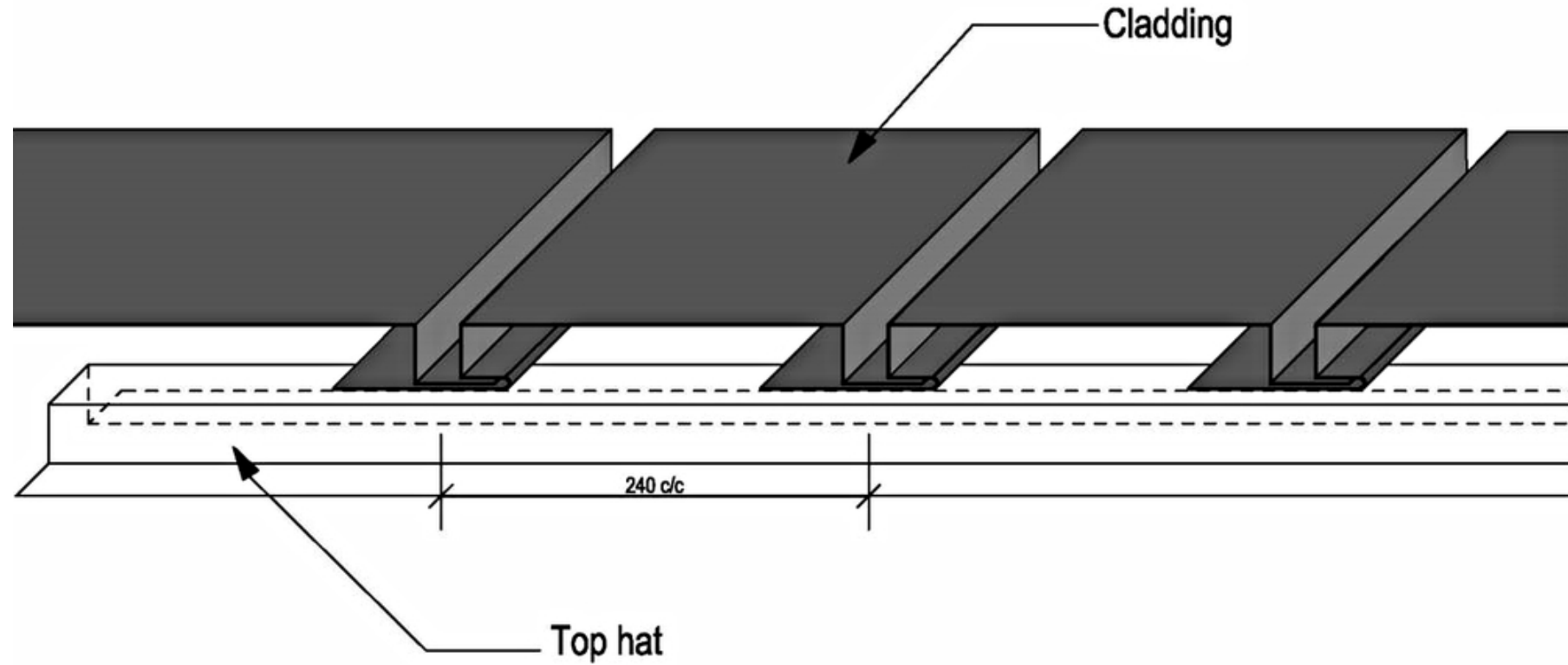
Zinc Cladding

Fire Resistant or FR grade of the cladding
Material coupled with aesthetical appeal

Zinc Cladding is genuinely a Non-Combustible material.

Zinc Cladding is Fire Retardant.

The pre-weathered rolled zinc meets the requirements of the building material class A2 in line with the standard /EN 13501-1/.

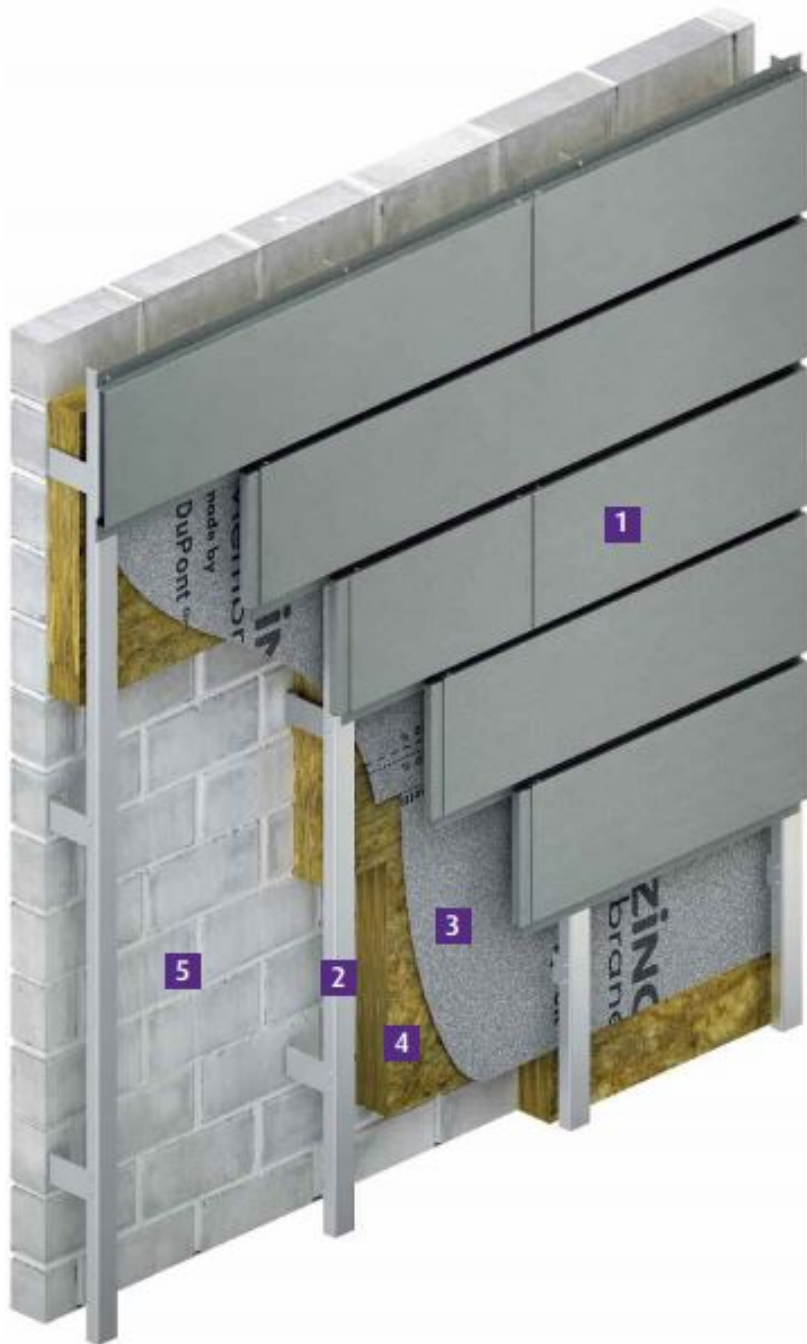


THERMAL/ INSULATION

INSTALLED WITH PRE-PUNCHED HOLES TO ALLOW INDIVIDUAL PANEL TO COMPENSATE FOR THERMAL EXPANSION.

PROVIDES HIGHLY EFFICIENT SOUNDPROOFING AGAINST AIRBORNE NOISE

HAVE INCREASED THICKNESS OF THERMAL INSULATION



- 1** VMZINC interlocking panels
- 2** Metal framing creating a vented 38mm airspace
- 3** VMZINC Membrane
- 4** Insulation
- 5** Supporting structure

<https://soundproofcentral.com/soundproof-stud-wall-guide/>

STRUCTURAL CONNECTION

USES SUBSTRATE BEHIND THE METAL PANEL SUCH AS $\frac{5}{8}$ "
PLYWOOD DENSGLASS GOLD AND EXTERIOR GYPSUM
BOARD

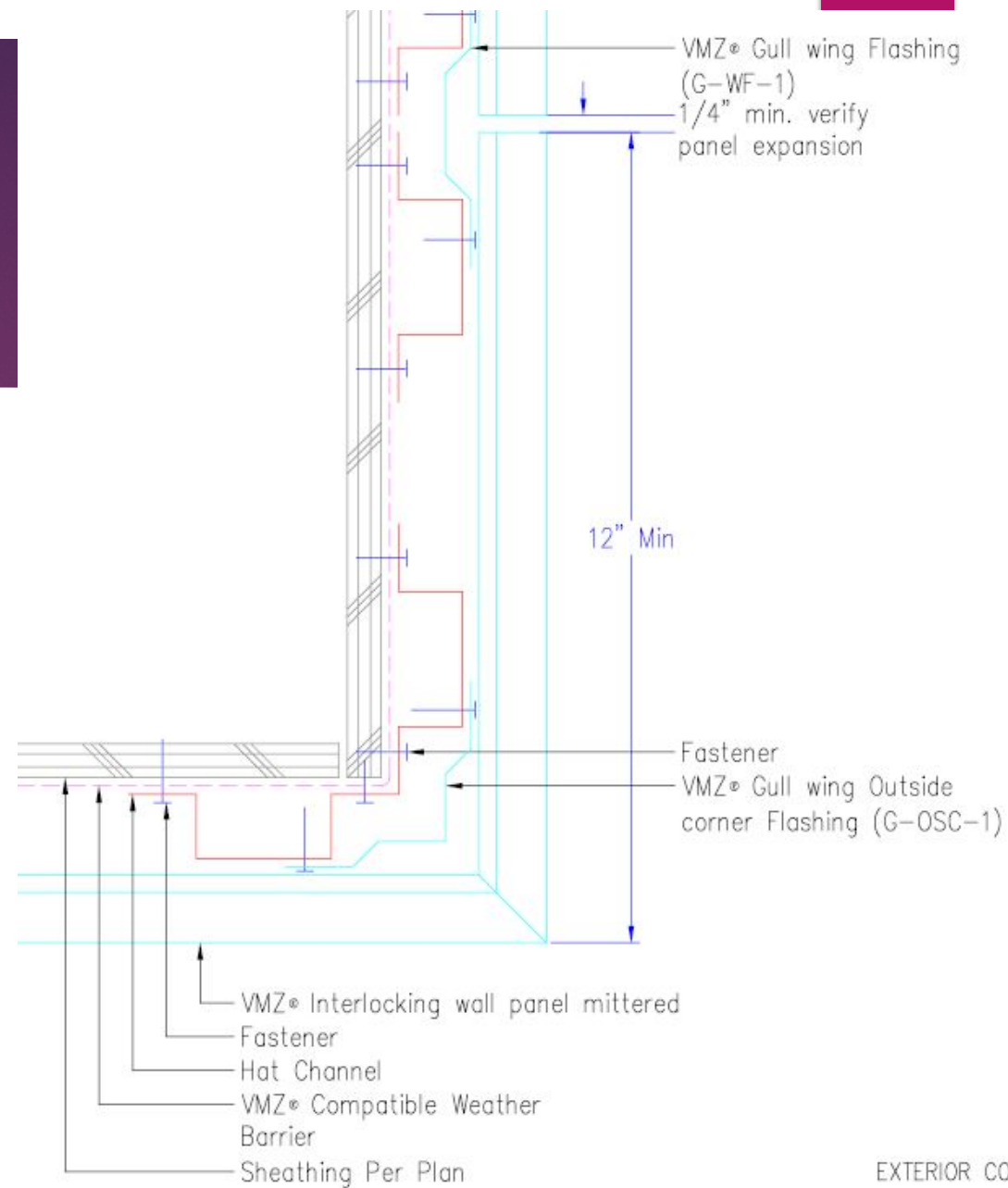
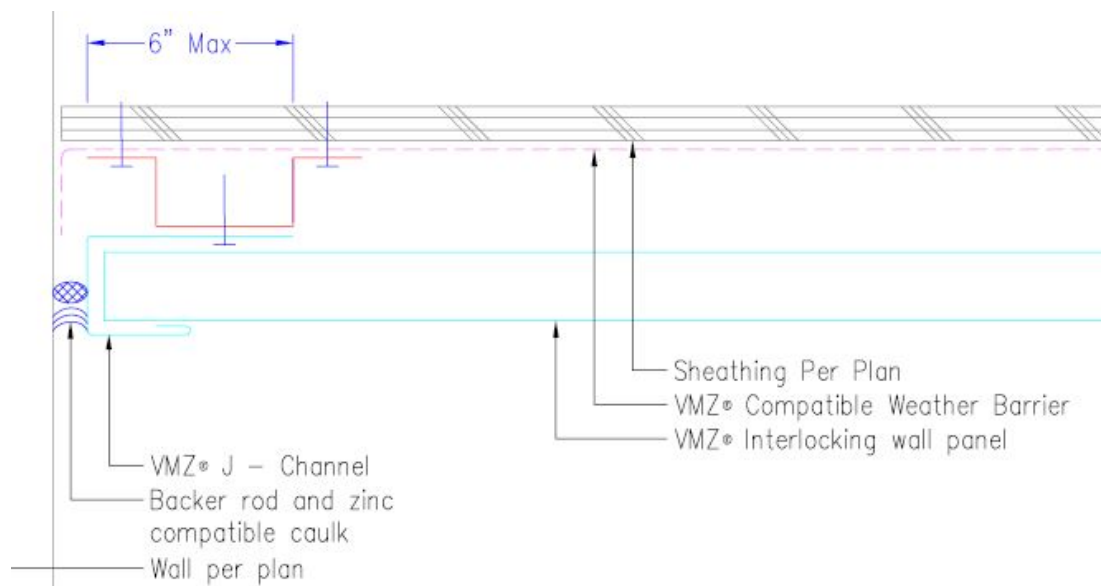
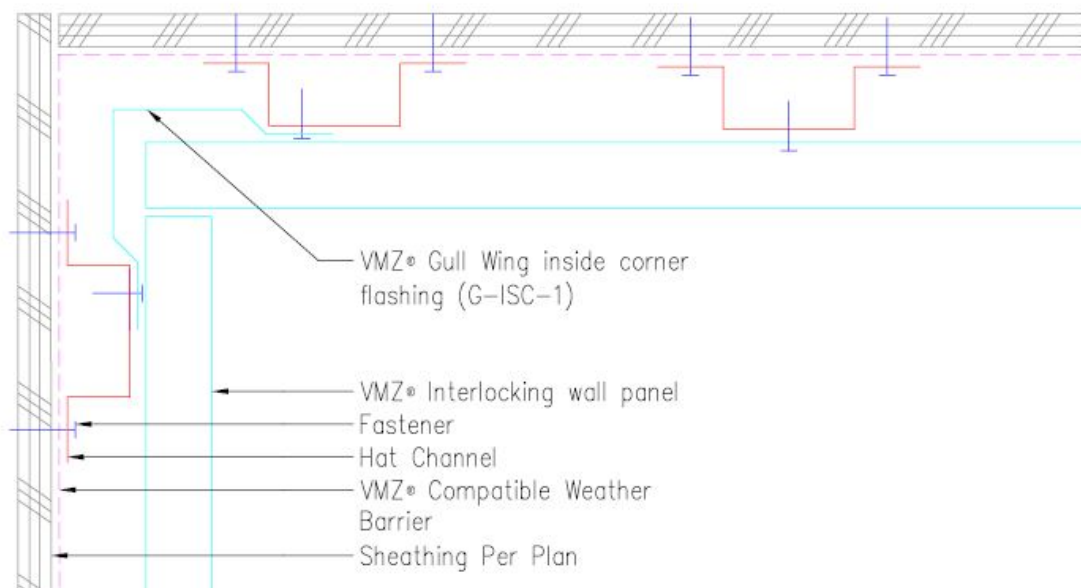
STEEL FASTENERS FOR PLYWOOD

HAT GRIT OR FLAT STRAP IS REQUIRED FOR DENSGLASS GOLD
AND EXTERIOR GYPSUM BOARD

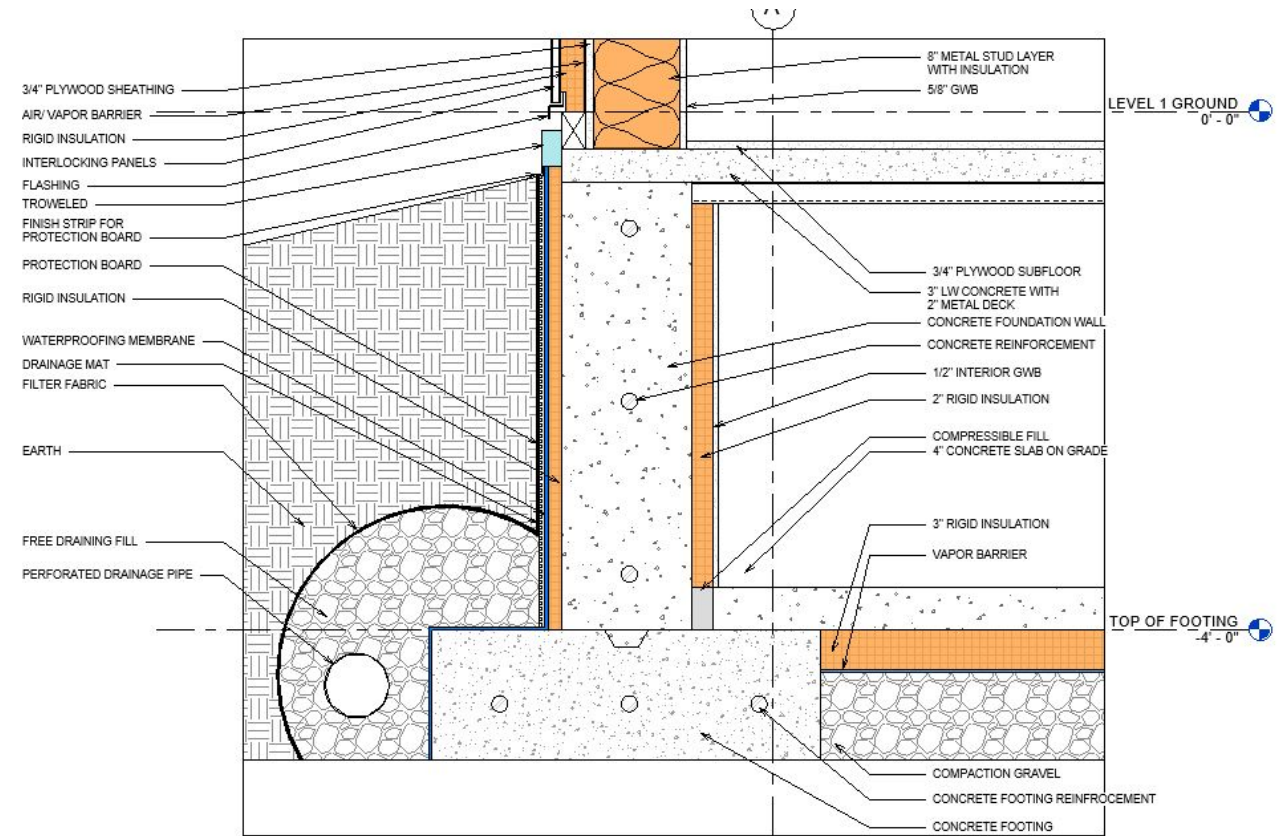
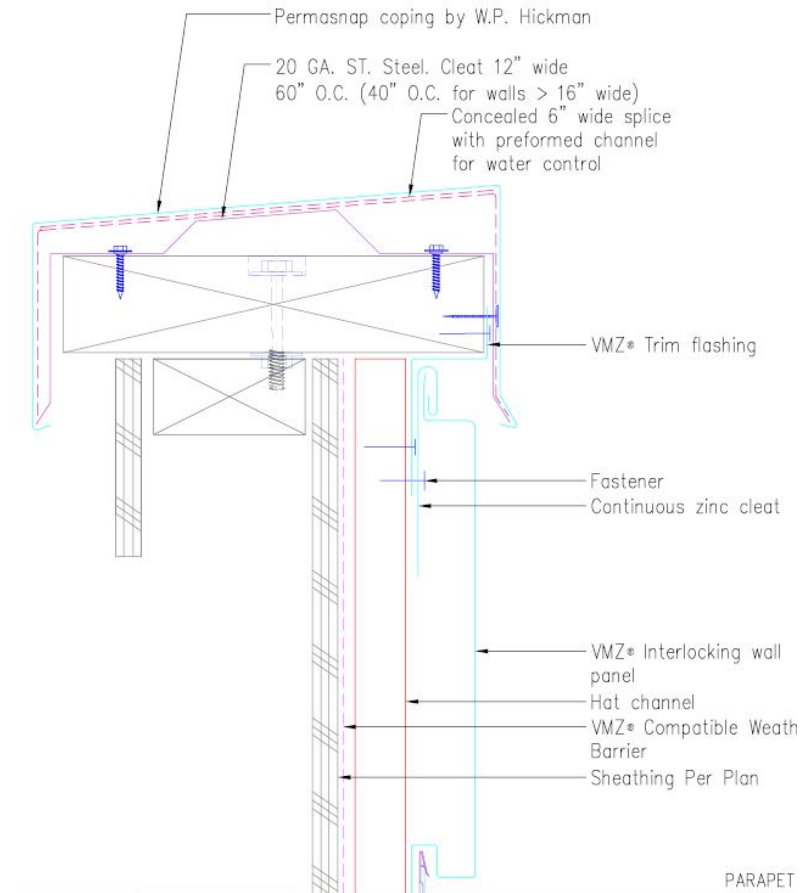
LIGHTS, SIGNS AND RAILINGS IS INSTALLED BEHIND THE METAL
PANELS.

PANELS HAVE INTERLOCKING GUTTER AND DRAINAGE
SYSTEMS TO THE PANEL WITH SINGLE HORIZONTAL
ATTACHMENT FOR DRY- JOINT RAINSCREEN ASSEMBLY.

ATTACHED WALL PANELS USING PROGRESSIVE
INTERLOCKING METHOD, WORKING FROM BOTTOM TO TOP
AND LEFT TO RIGHT.



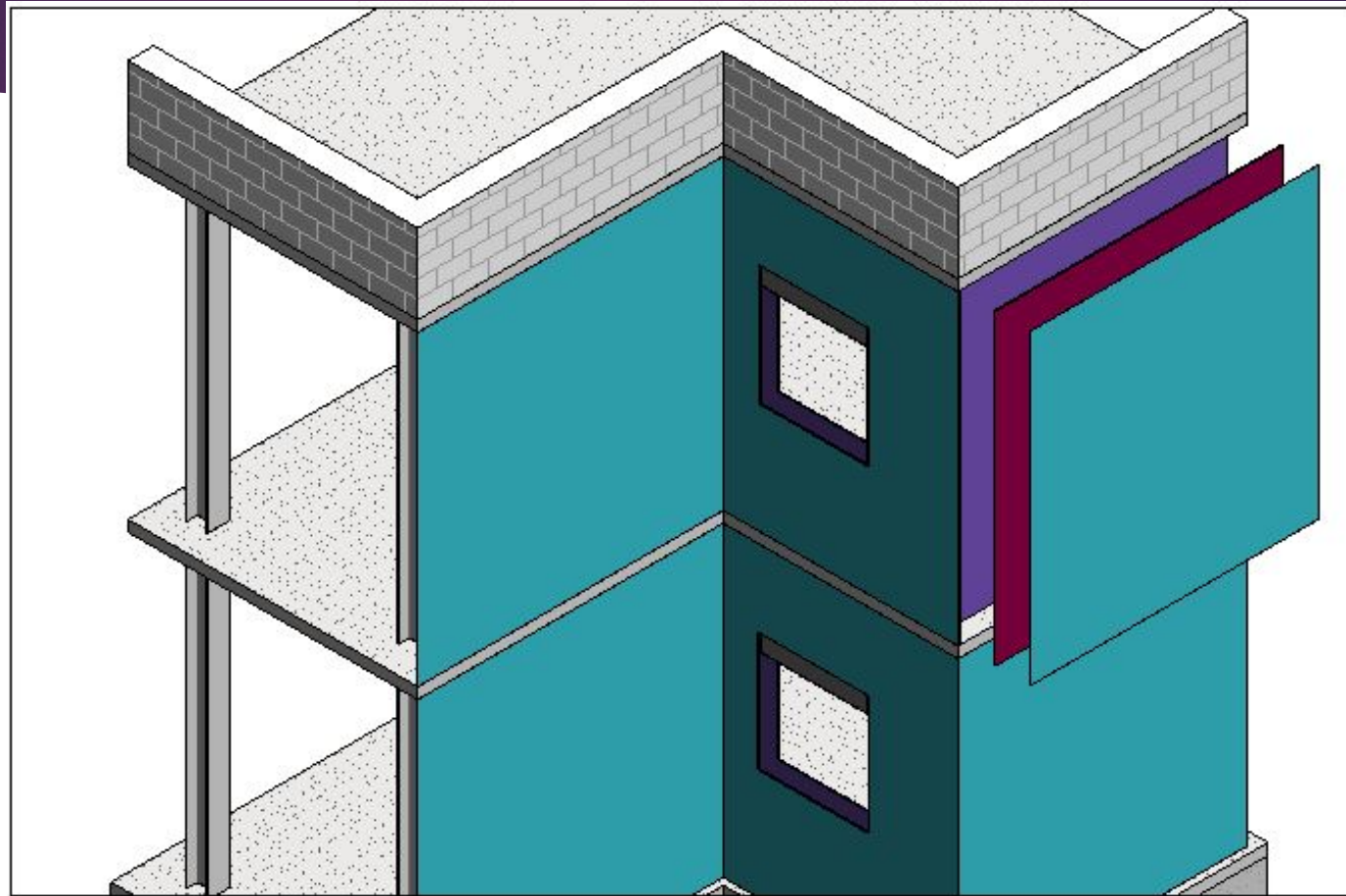
EXTERIOR CORNER



SUSTAINABILITY

- ▶ Zinc is an environmental- friendly metal
- ▶ Zinc can be recycled infinitely without loss of properties and quality. While the recycling rate of zinc depends mainly on the collection rate of zinc-containing products at their end of life, over 90% of these collected products are recycled.
- ▶ Zinc Cladding is a highly sustainable green material
- ▶ abundant lifespan that ranges from 80 to 100 years
- ▶ Zinc is also a fungistat, which is an agent that prohibits the reproduction of mold, mildew and fungus.

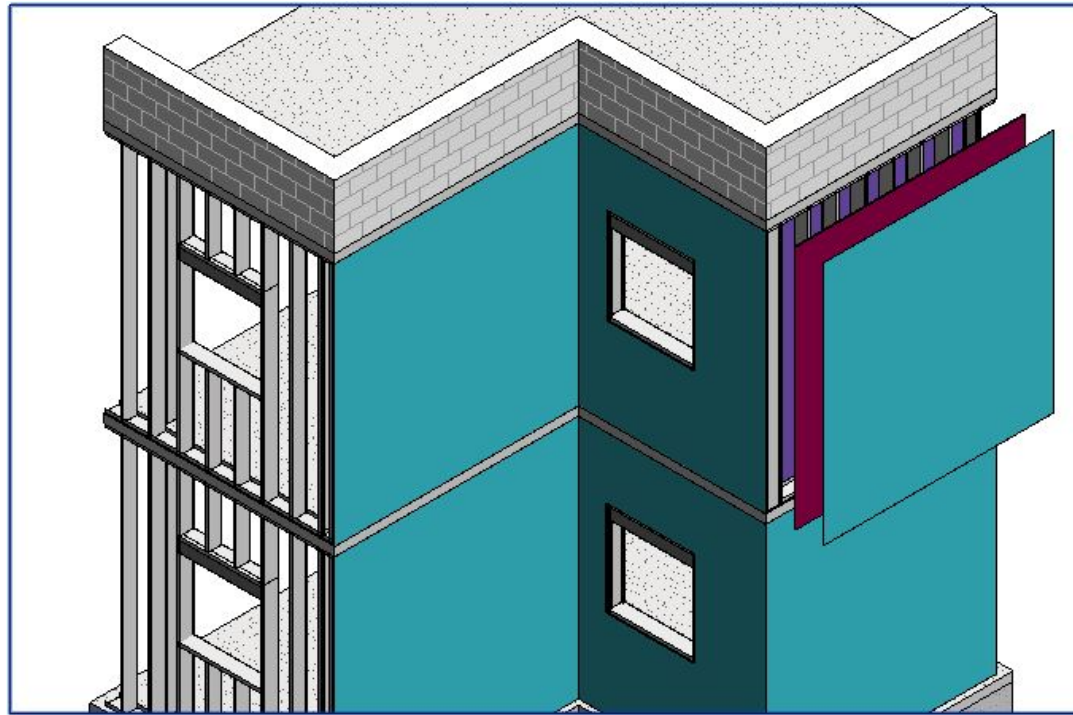
SLABS/ STRUCTURE



5/8" GWB ON THE INSIDE



8" METAL STUD FRAME



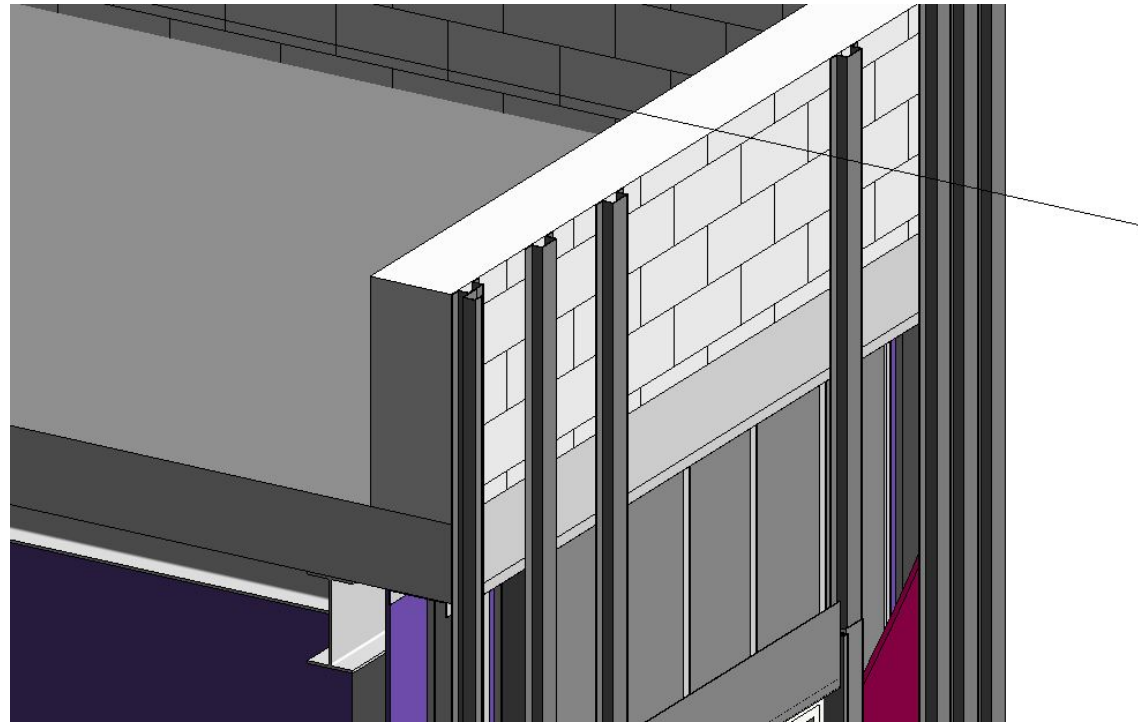
SHEATHING ON THE OUTSIDE



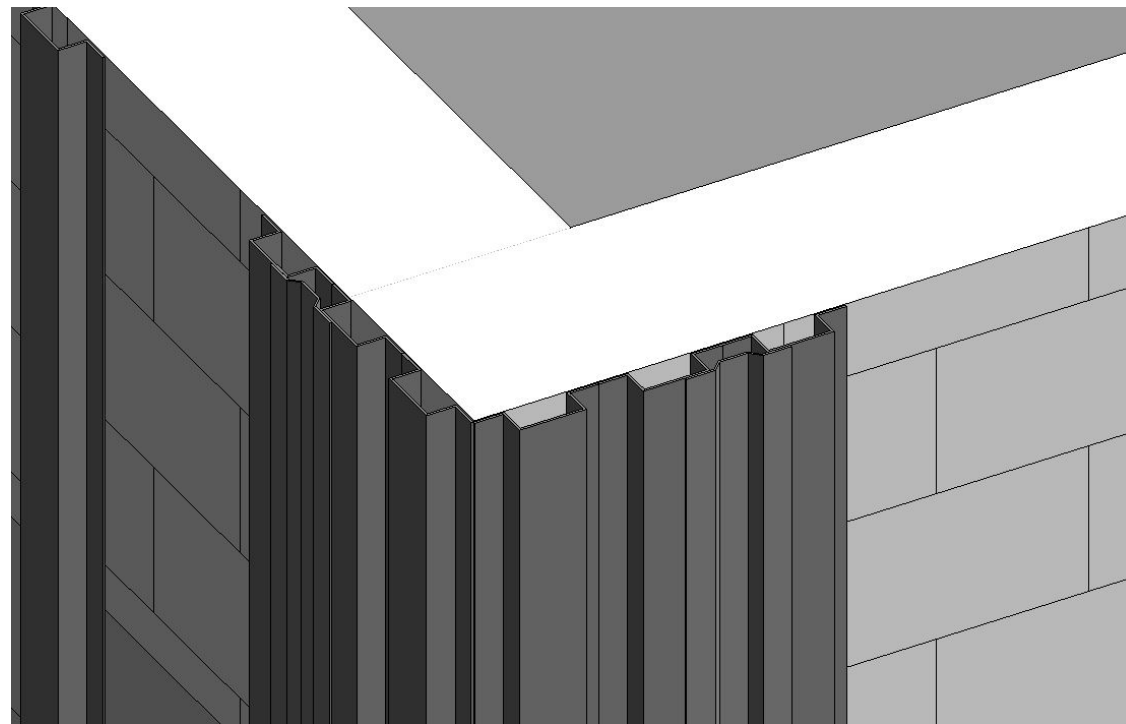
WATER PROOFING LAYER



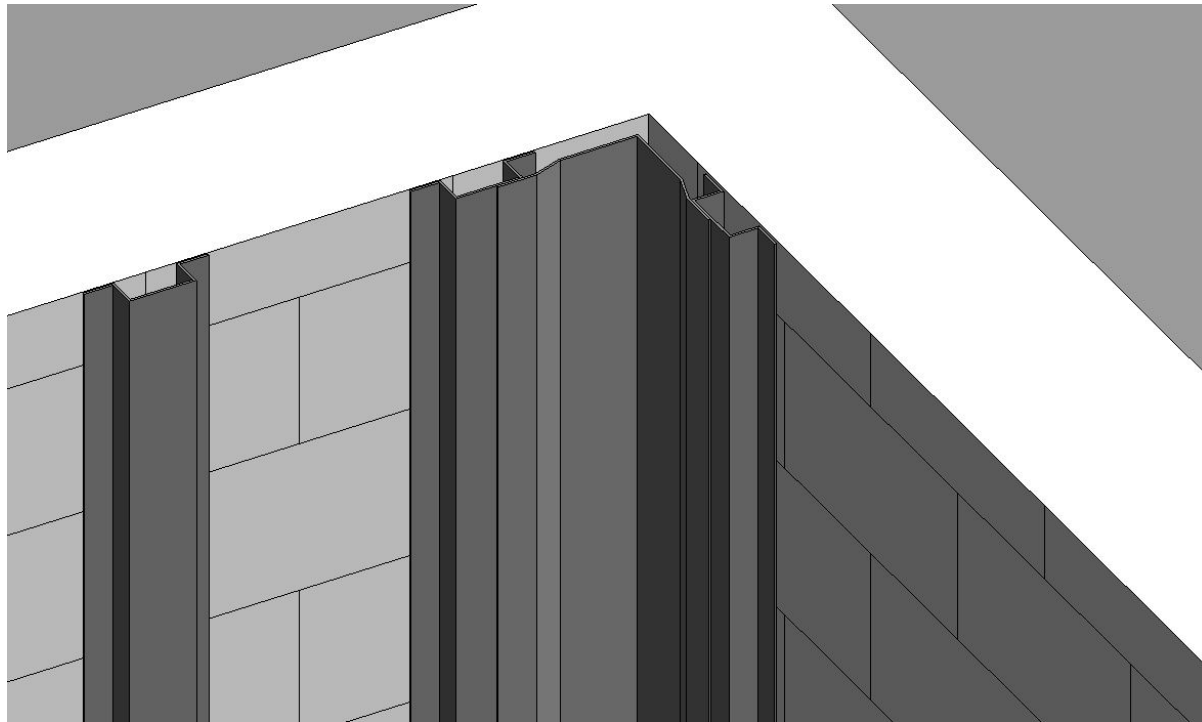
TOP HAT



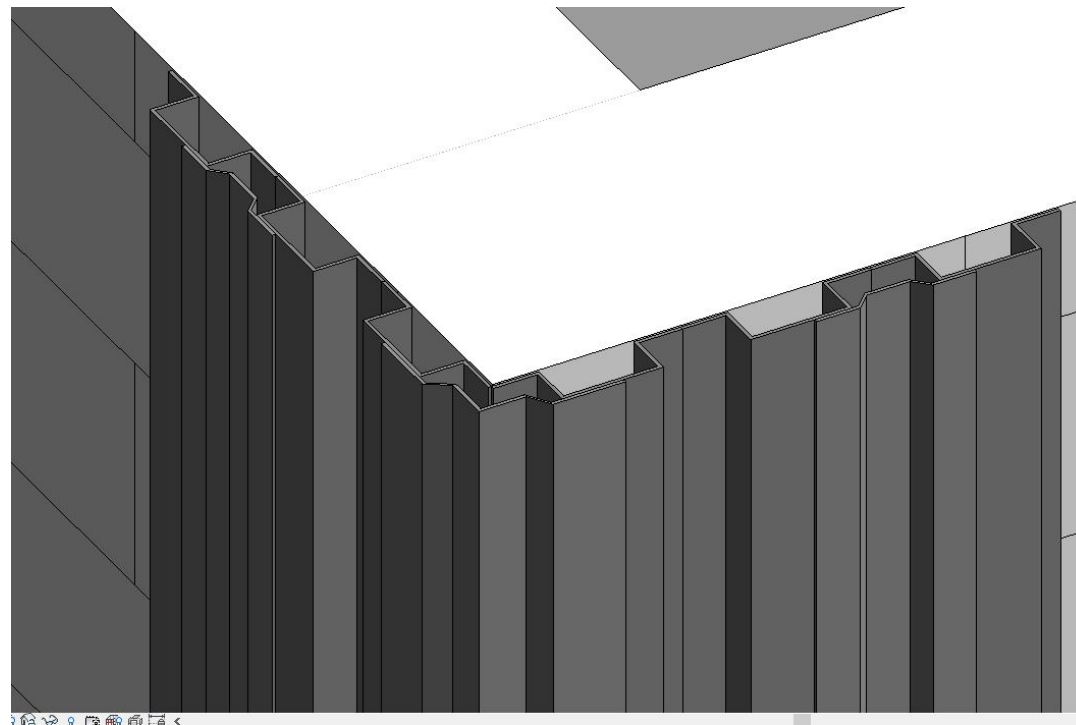
GULL WING



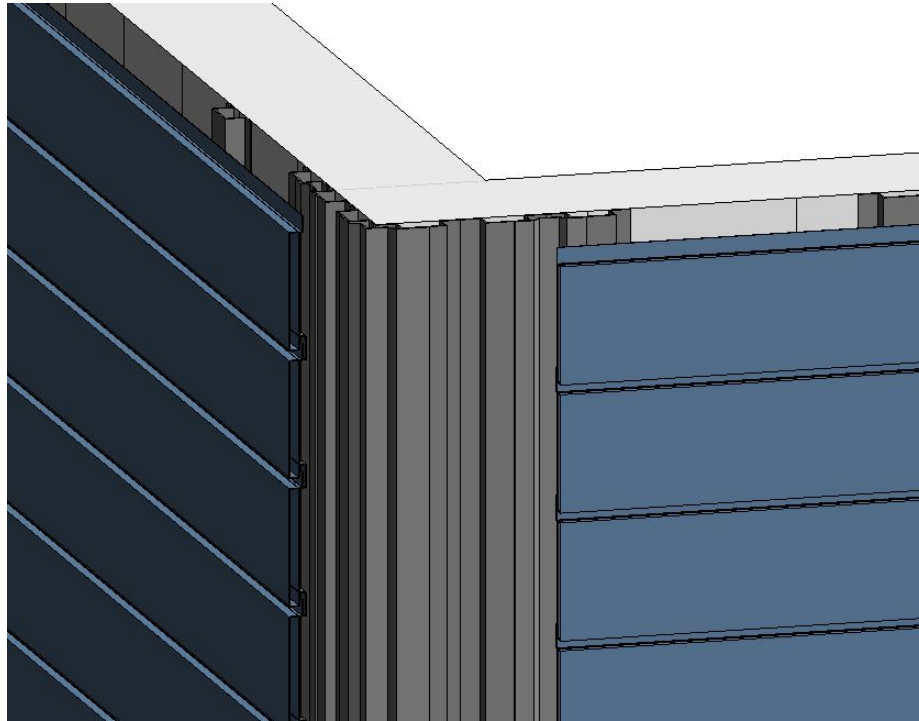
GULL WING INSIDE CORNER



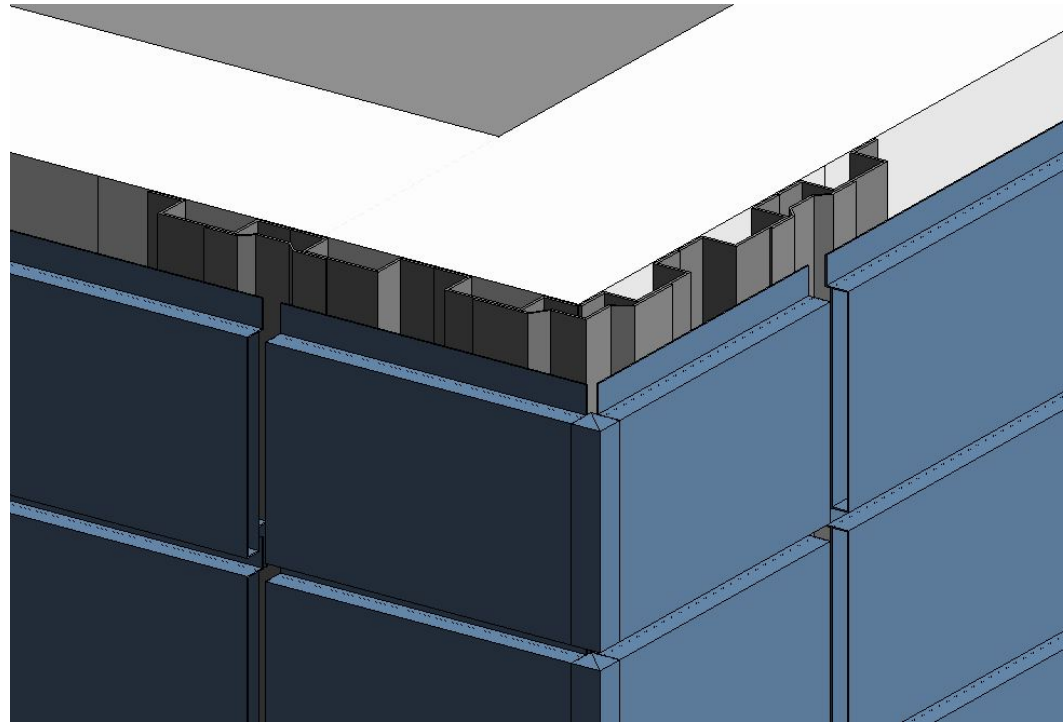
GULL WING OUTSIDE CORNER



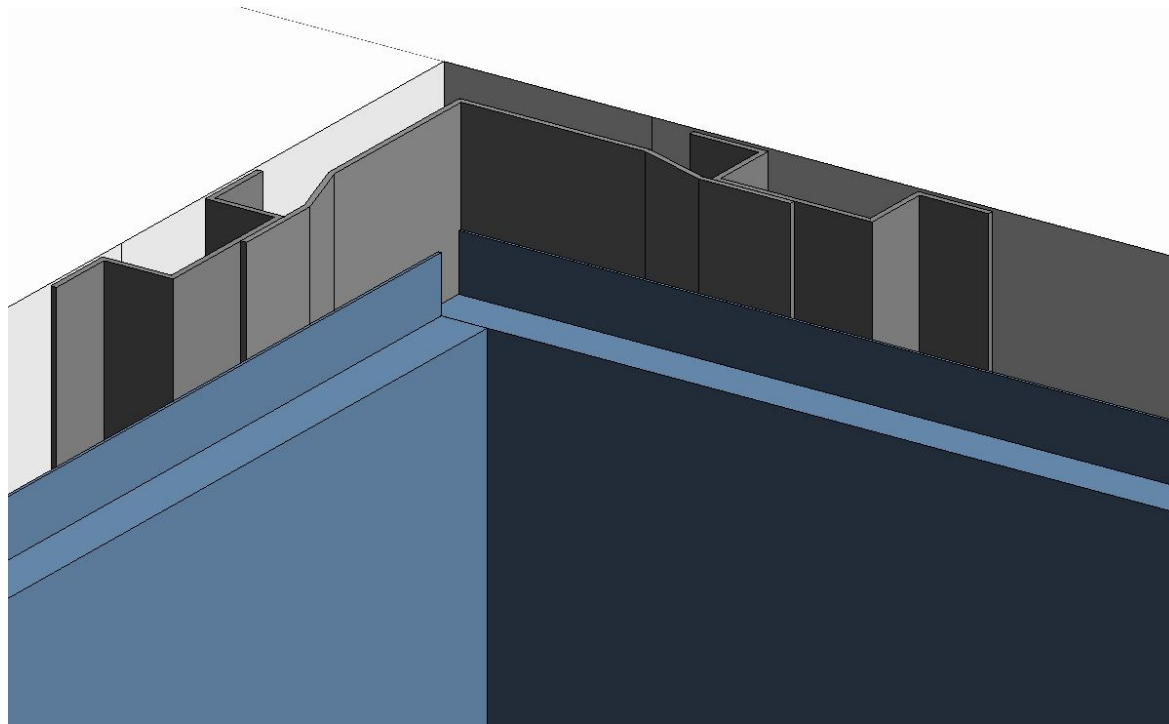
INTERLOCKING PANELS



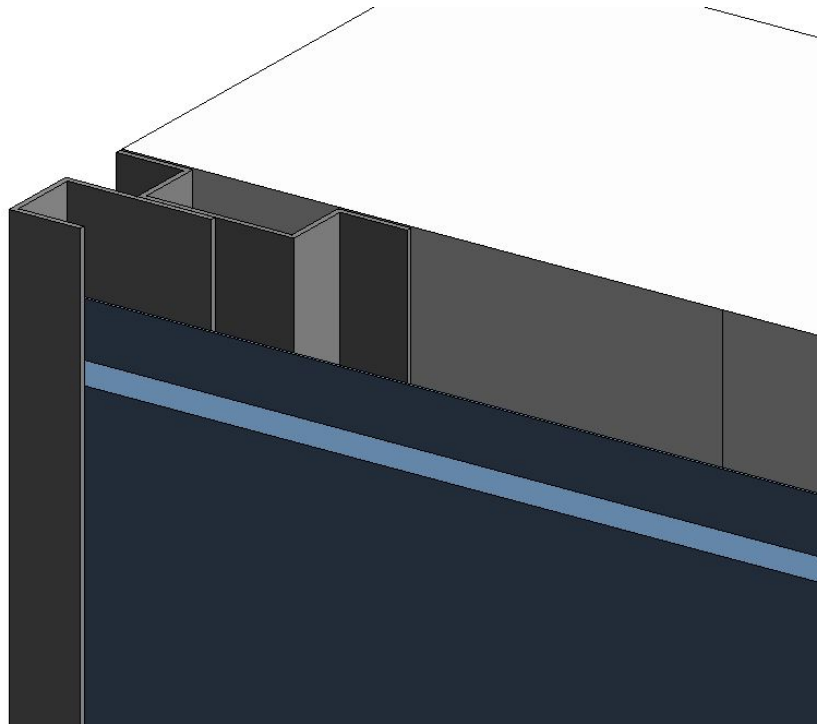
INTERLOCKING PANELS OUTSIDE CORNER



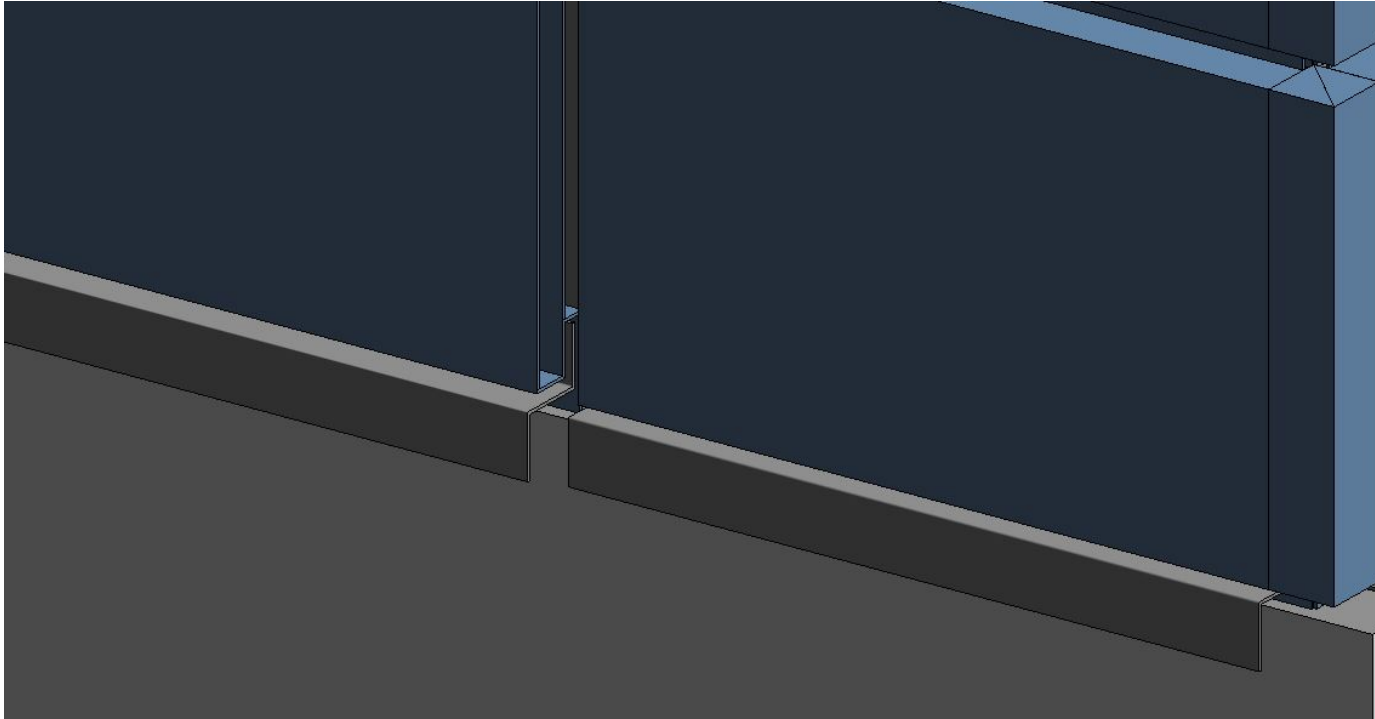
INTERLOCKING PANELS INSIDE CORNER



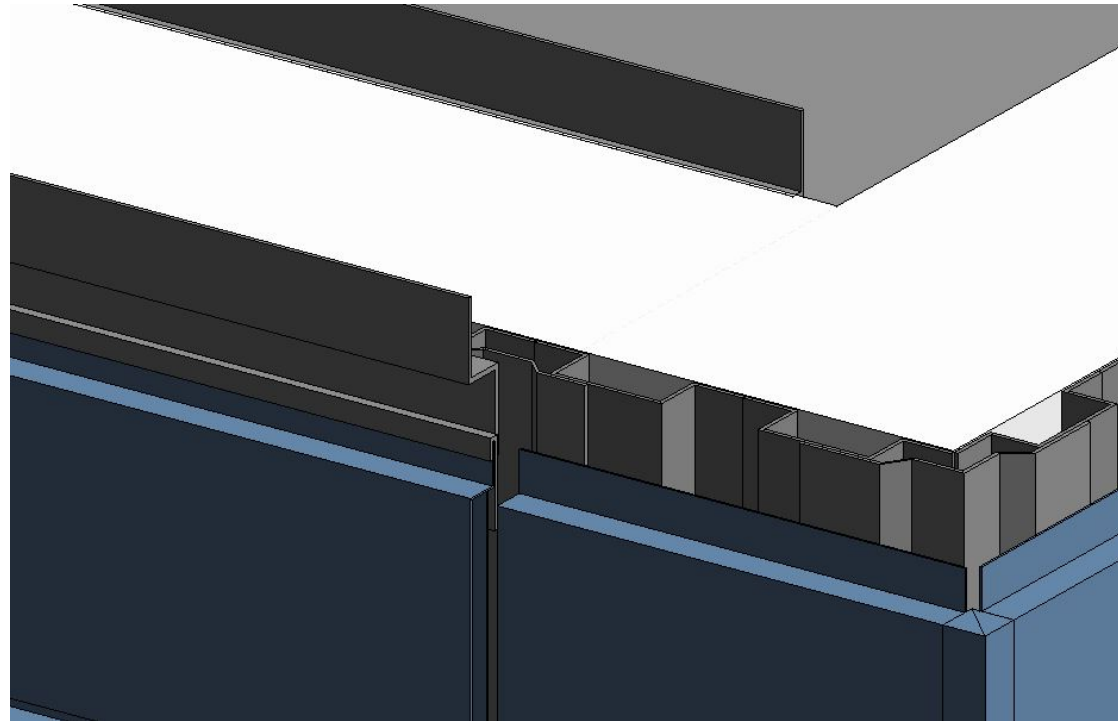
END WALL CONDITION



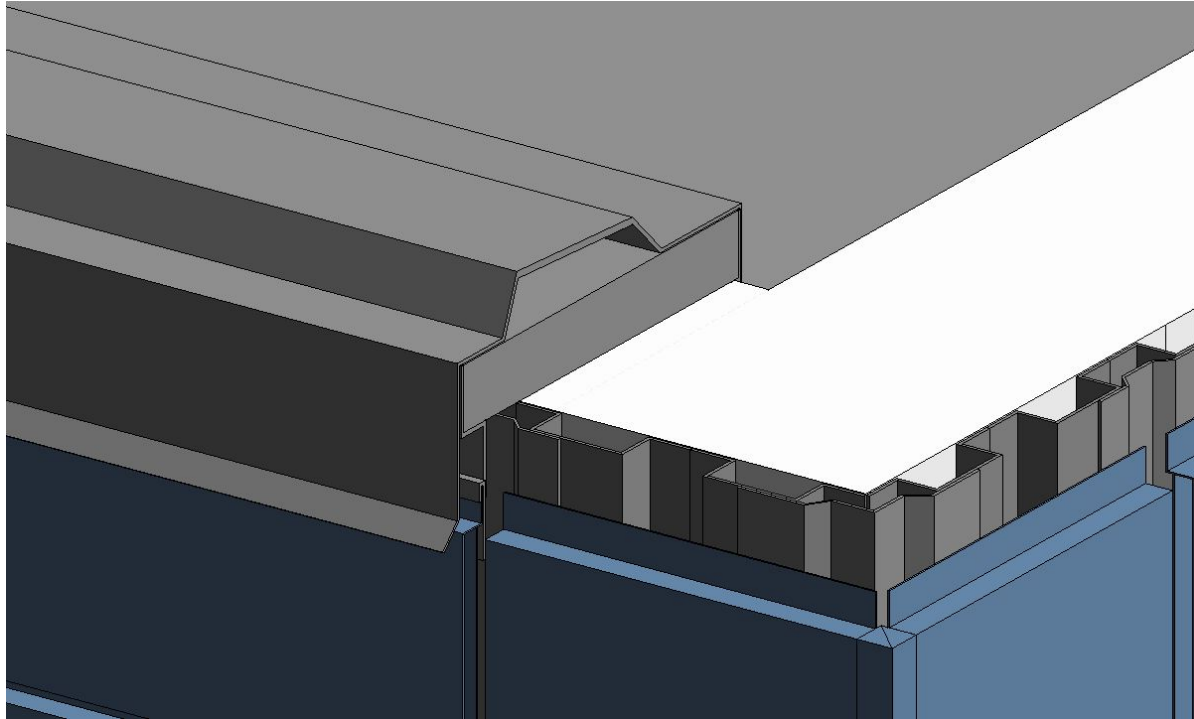
FLASHING



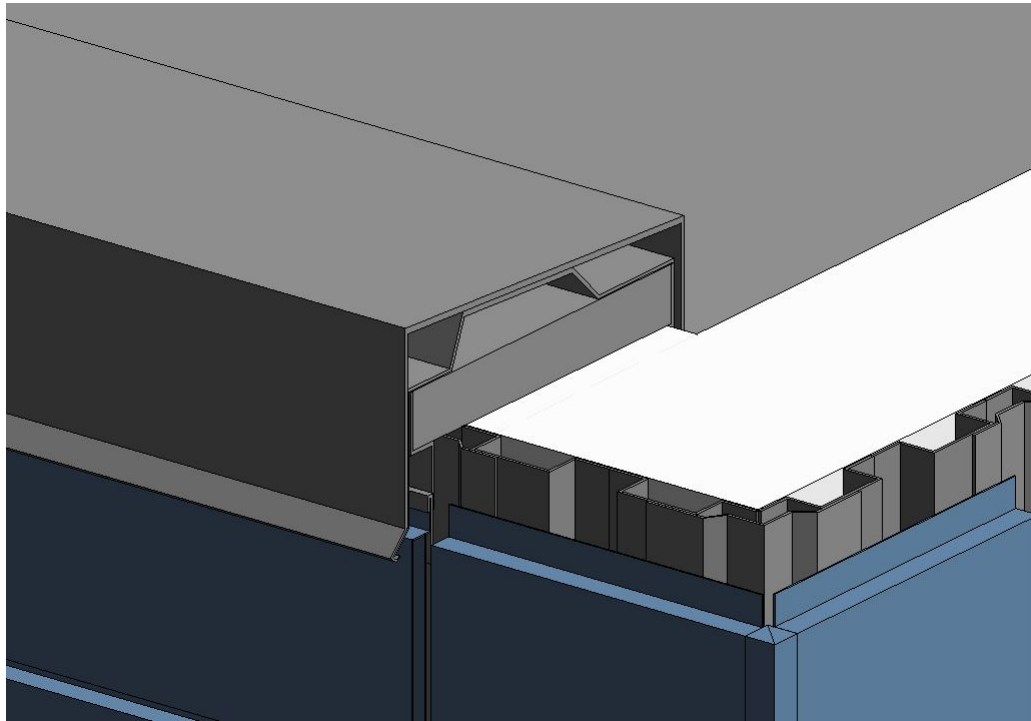
PARAPET FLASHING



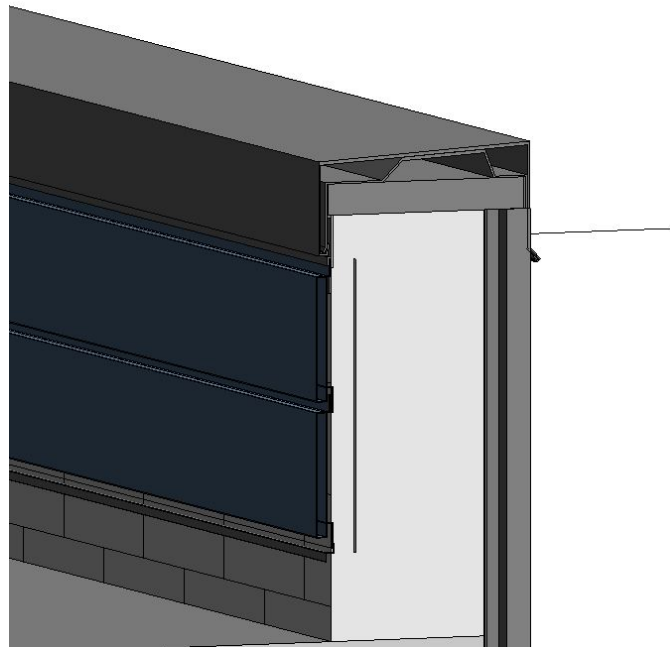
STEEL CLEAT/ WOOD BLOCK



PERMASNAP COPING



PARAPET



SOURCES

- ▶ <https://www.vmpzinc.in/our-solutions/vmpzinc-facade.html>
- ▶ <https://www.vmpzinc.com/zinc-qualities.html>
- ▶ <https://www.dri-design.com/details-specs/access-details>

KAWNEER 1600 SCREW SPLINE CURTAIN WALL SYSTEM

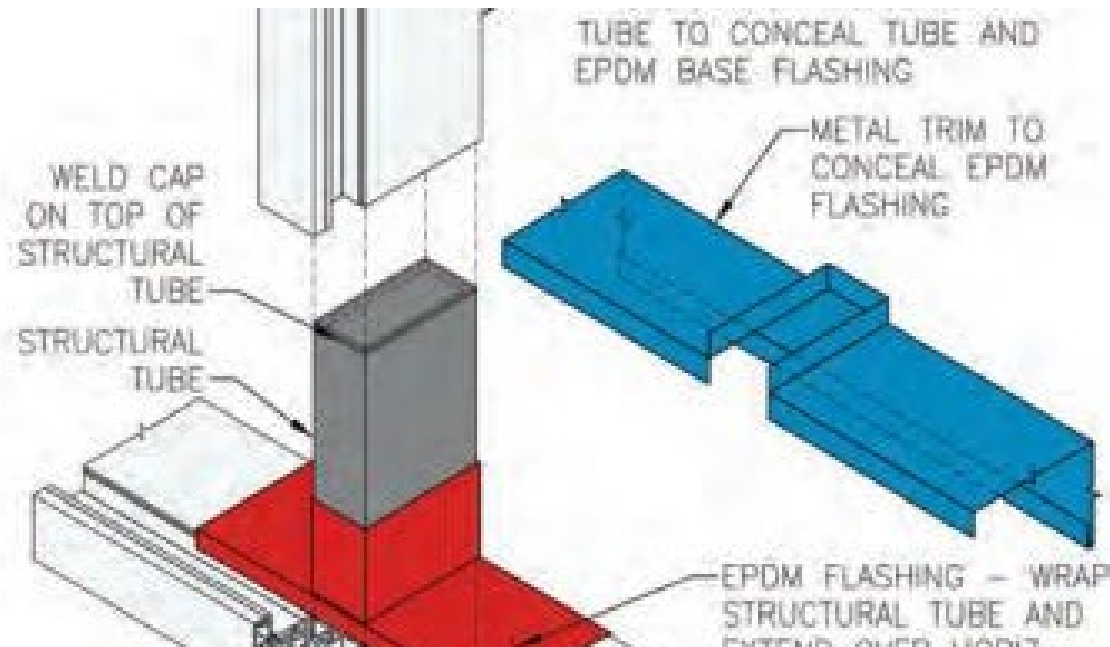
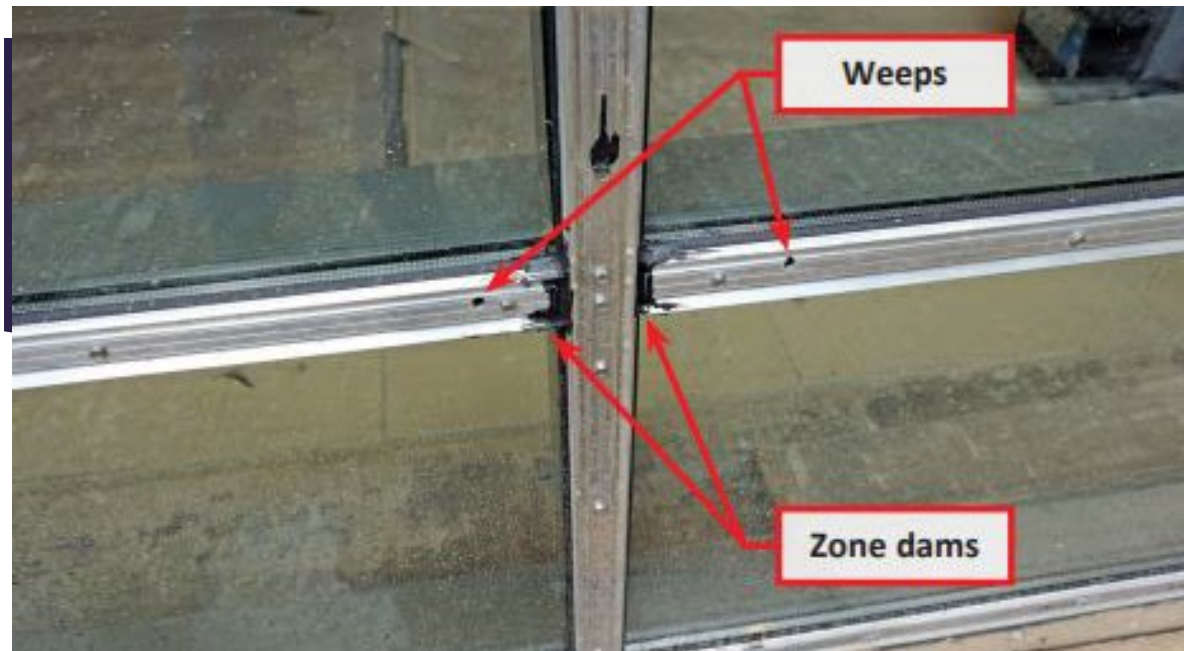
DOLMA TSERING

EACH LIGHT OF GLASS IS
COMPARTMENTALIZED USING
JOINT PLUGS AND SILICONE
SEALANT TO DIVERT WATER TO
HORIZONTAL WEEP LOCATIONS

WEEP HOLES LOCATED IN THE
HORIZONTAL PRESSURE PLATES
AND COVERS TO DIVERT
WATER TO THE EXTERIOR OF
THE BUILDING



WATERPROOFING



<http://rci-online.org/wp-content/uploads/2014-01-kivela-mccowan.pdf>

Versatile, water-based firestop spray for curtain wall or edge-of-slab applications.

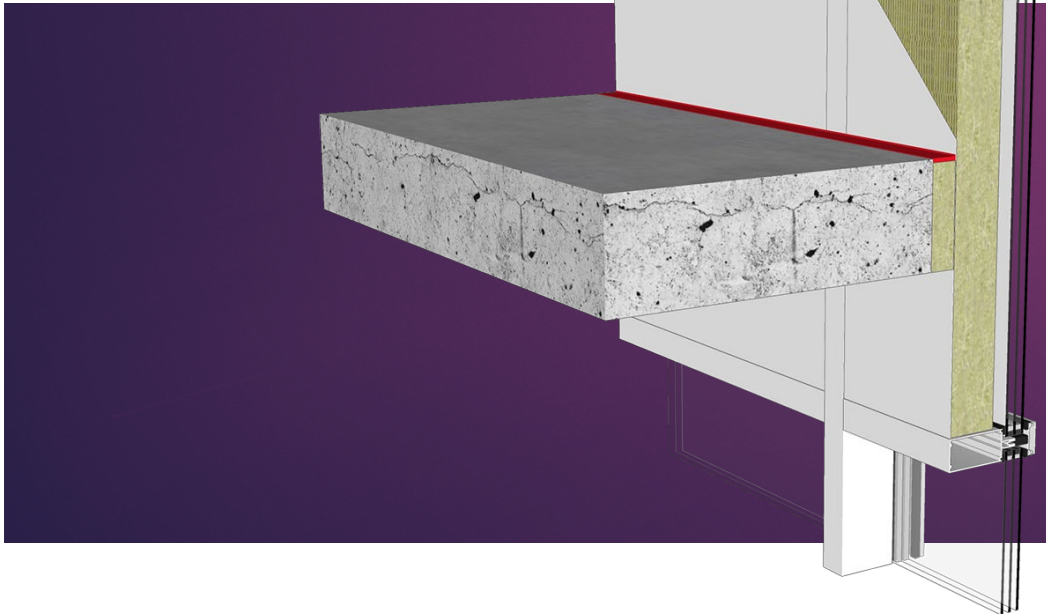
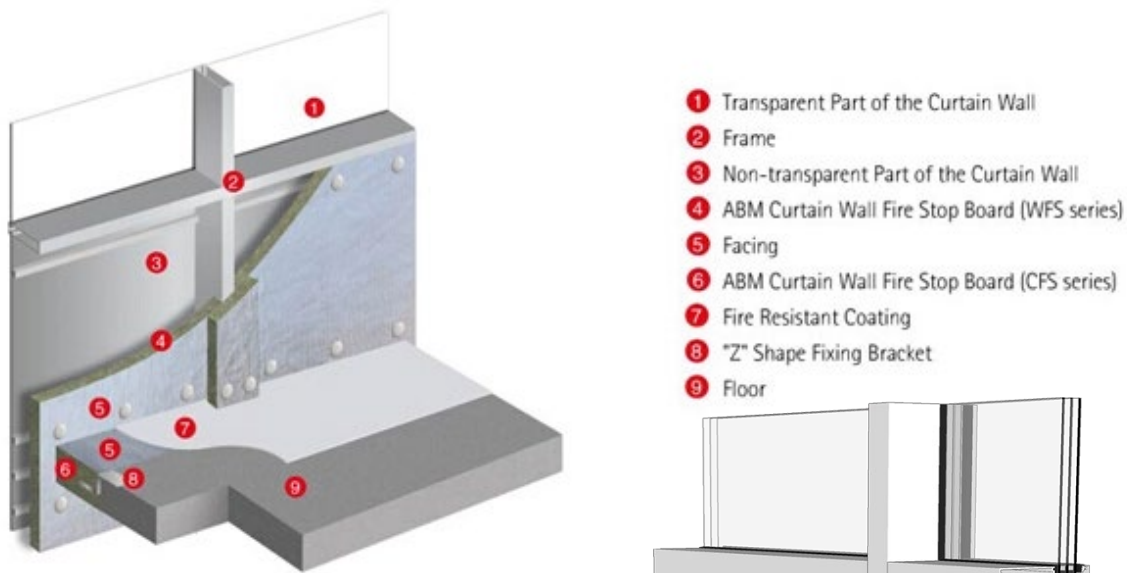
Fast-curing and highly elastic firestop sealant for curtain wall or edge-of-slab applications.

Firestop preformed solution for sealing edge-of-slab joints



FIREPROOFING

Fire & Thermal Insulation for Curtain Wall System



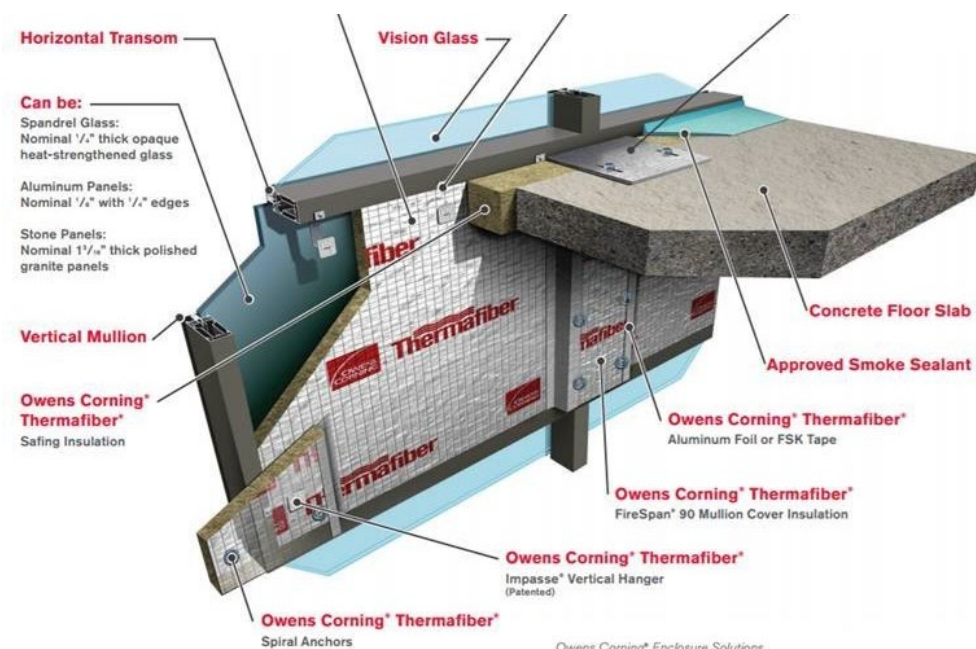
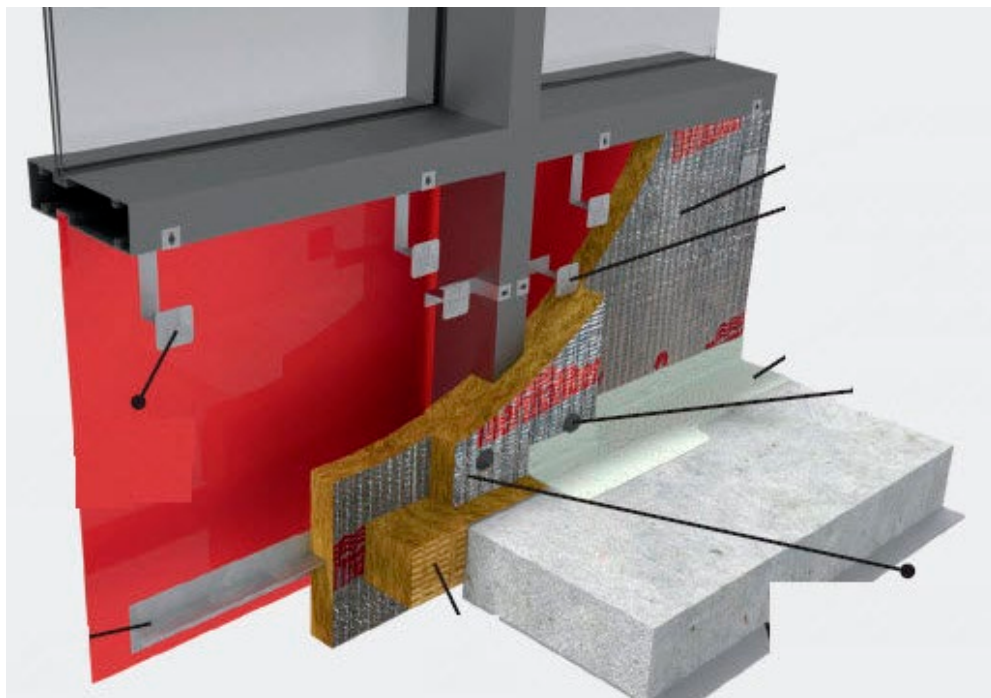
CAPTURED SYSTEM THERMAL
SEPARATOR PRE- INSTALLED INTO
PRESSURE PLATE

THERMAL SEPARATOR EXTRUDED OF
A SILICONE COMPATIBLE ELASTOMER
THAT PROVIDES 1/4" SEPARATION

THERMAL BREAK AND EPDM GASKET
WHICH RESISTANT TO WEATHERING



INSULATION



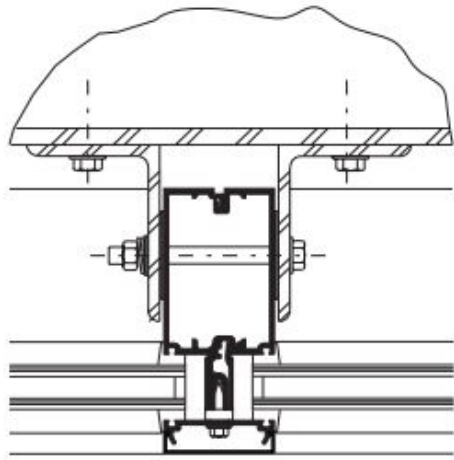
STRUCTURAL CONNECTION

USES SCREW SPLINE JOINERY

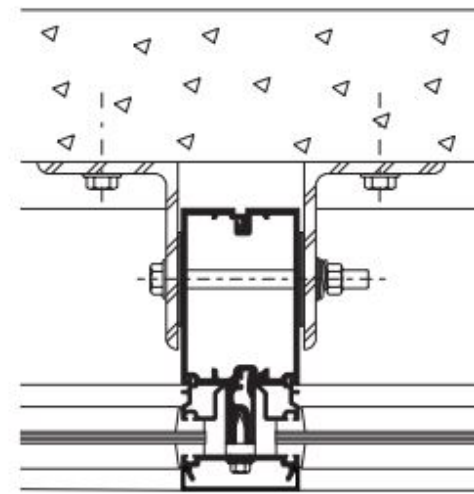
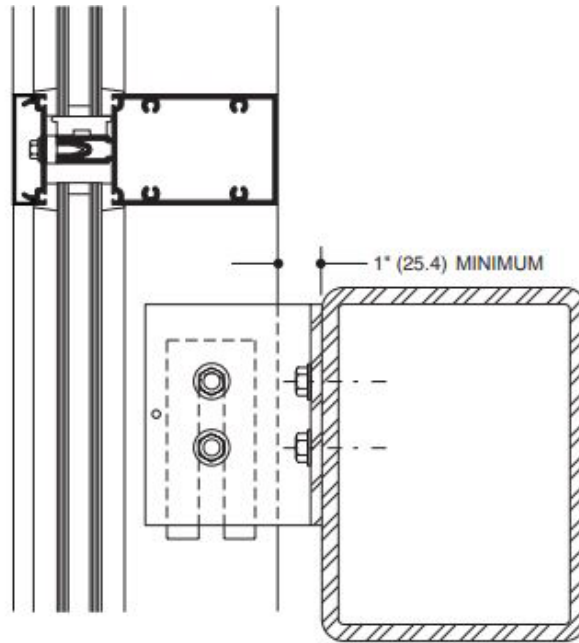
PRODUCT IS PRE- ASSEMBLED, JOINT SEALED AND SENT TO JOB SITE AS LARGE UNITS.

INTERLOCKING MULLION DESIGN TO ELIMINATE NEED FOR ANTI- BUCKING CLIPS

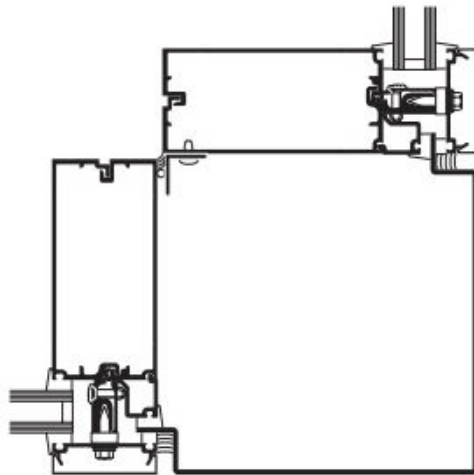
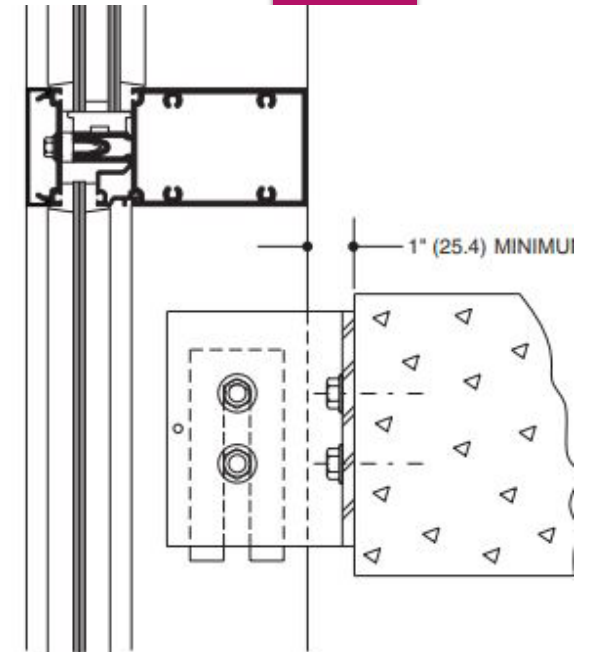
PERIMETER SEAL INSTALLED AT PRESSURE POINT OR MULLION SHOULDER



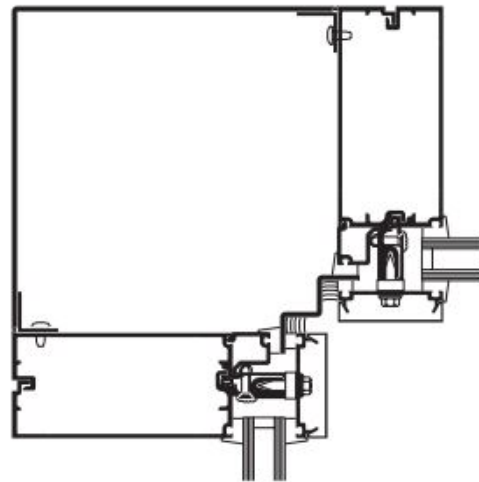
ANCHORING TO HORIZONTAL
STRUCTURAL STEEL



ANCHORING TO FLOOR SLAB

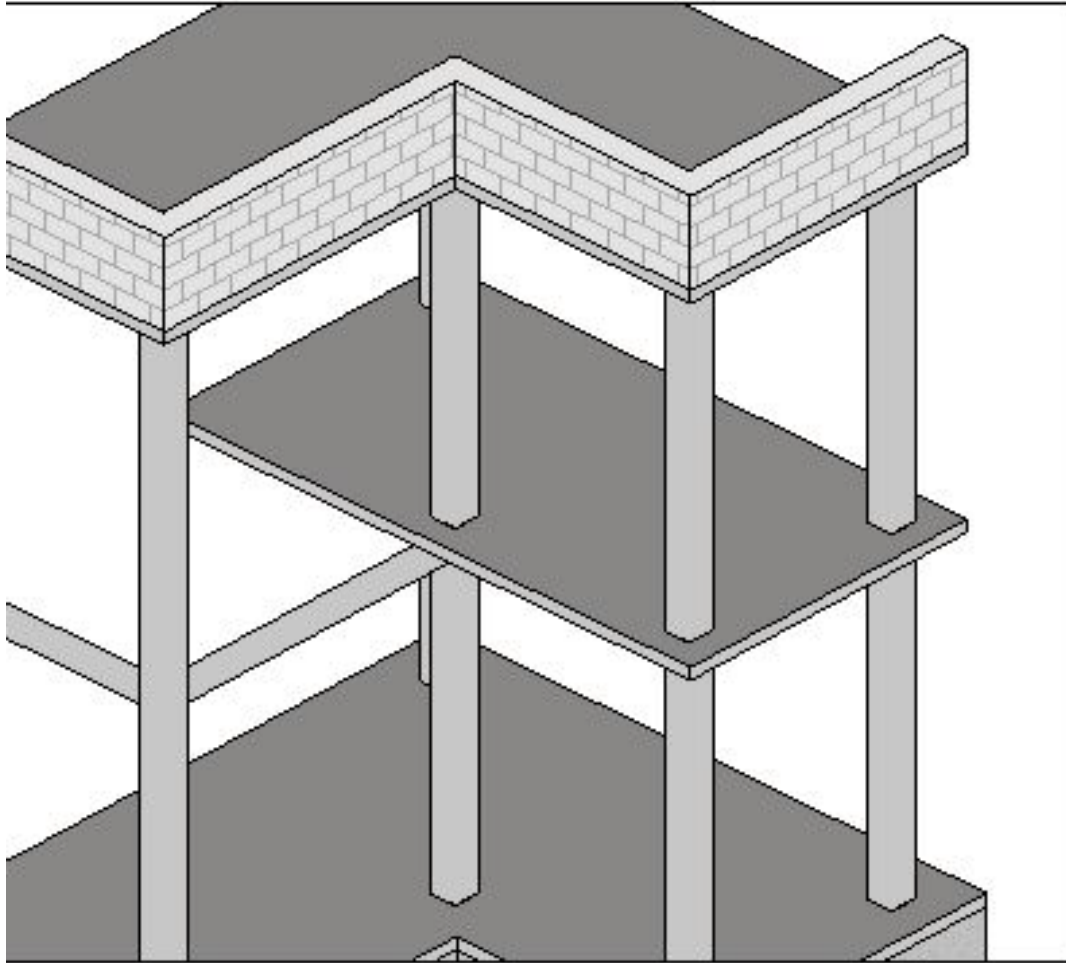


90° OUTSIDE CORNER

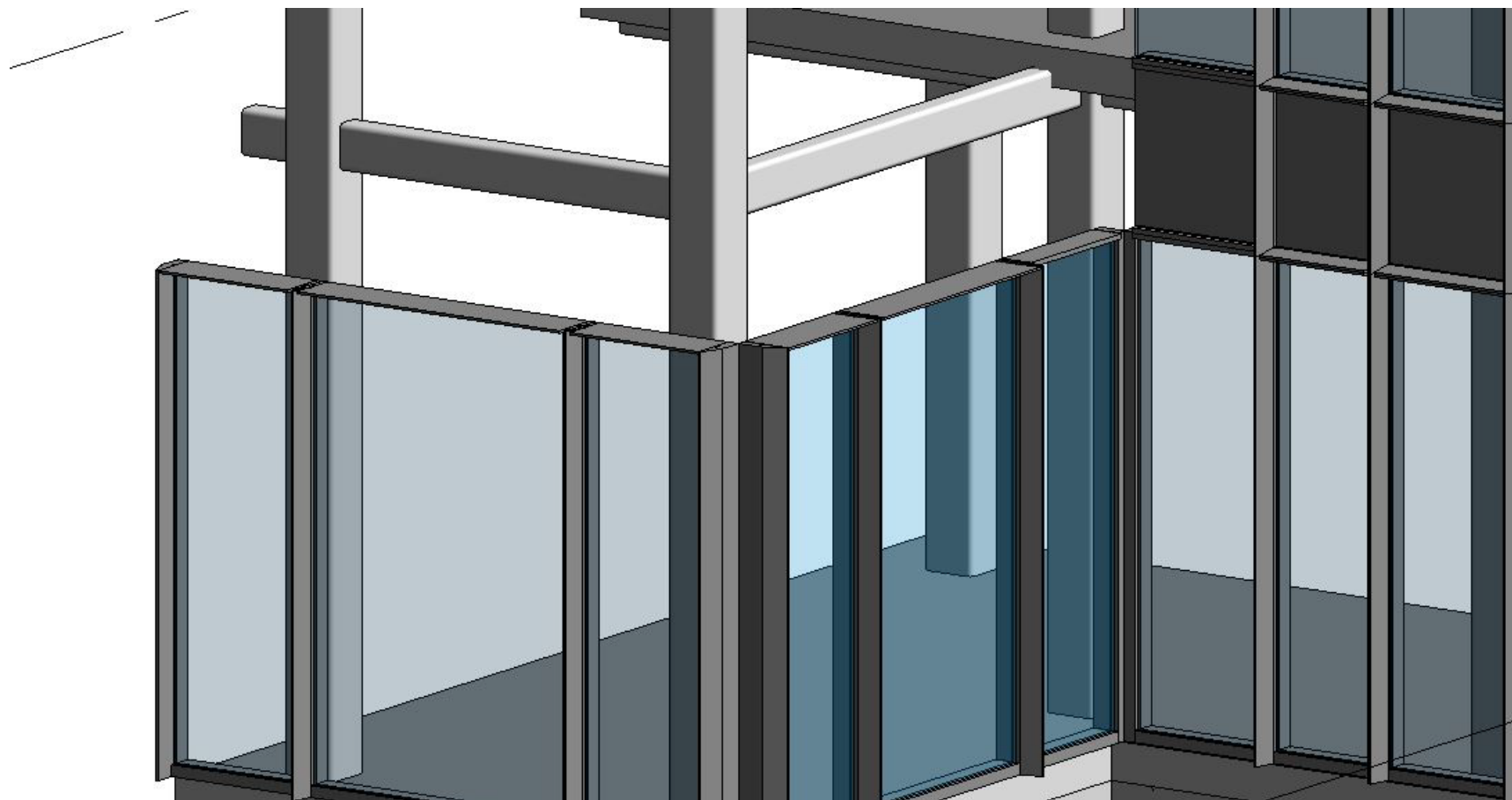


90° INSIDE CORNER

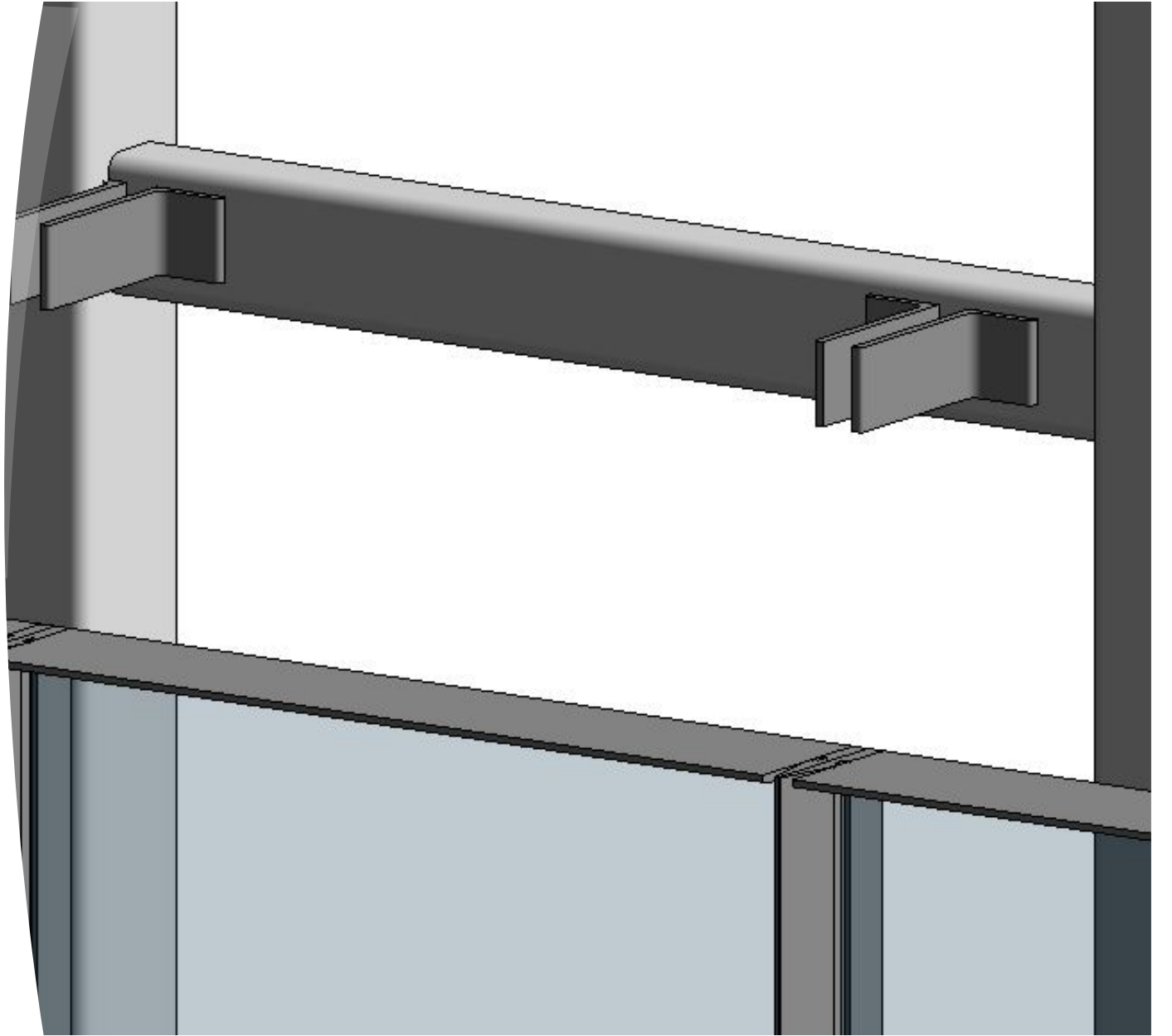


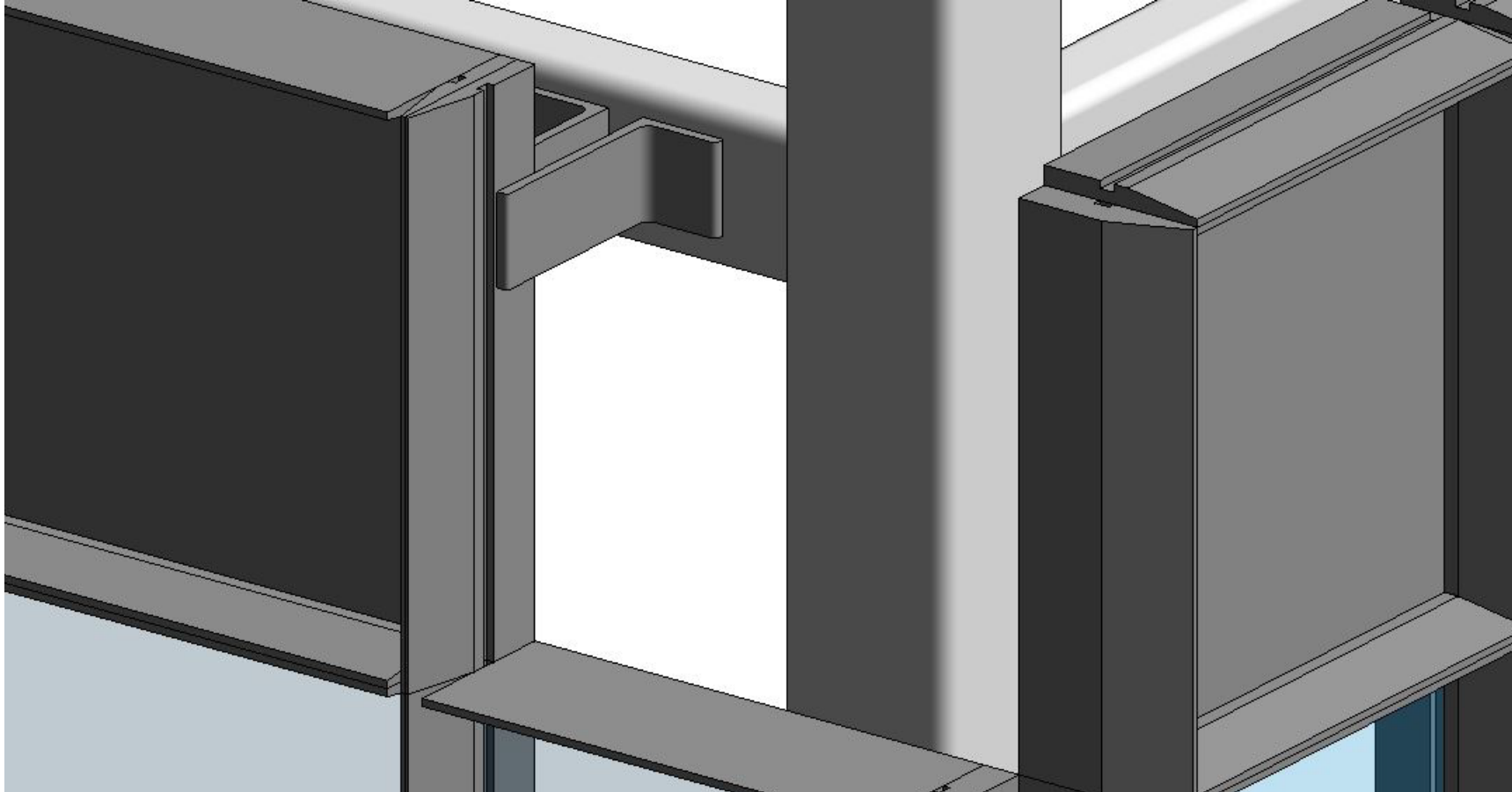


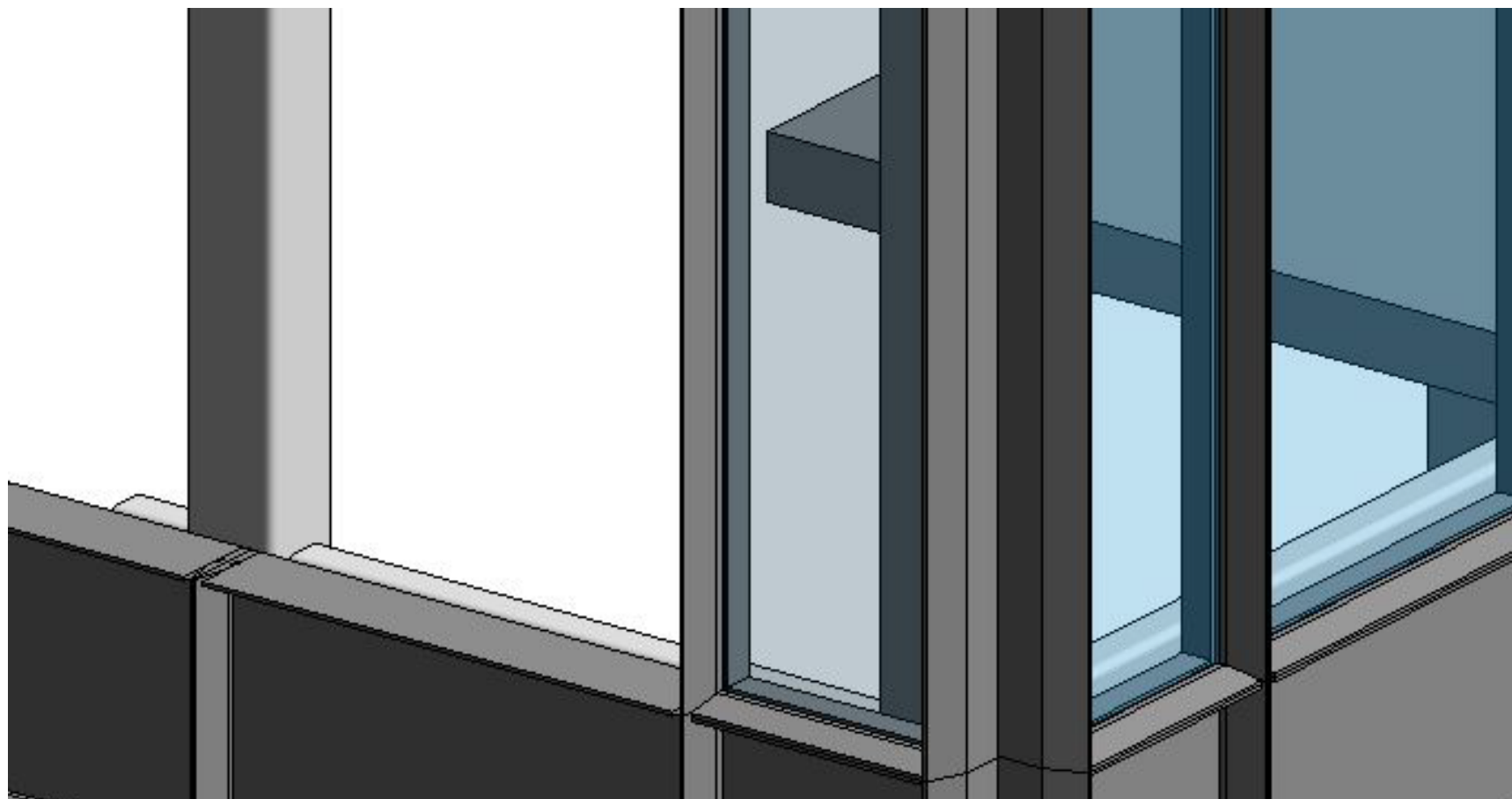
SLABS/STRUCTURE

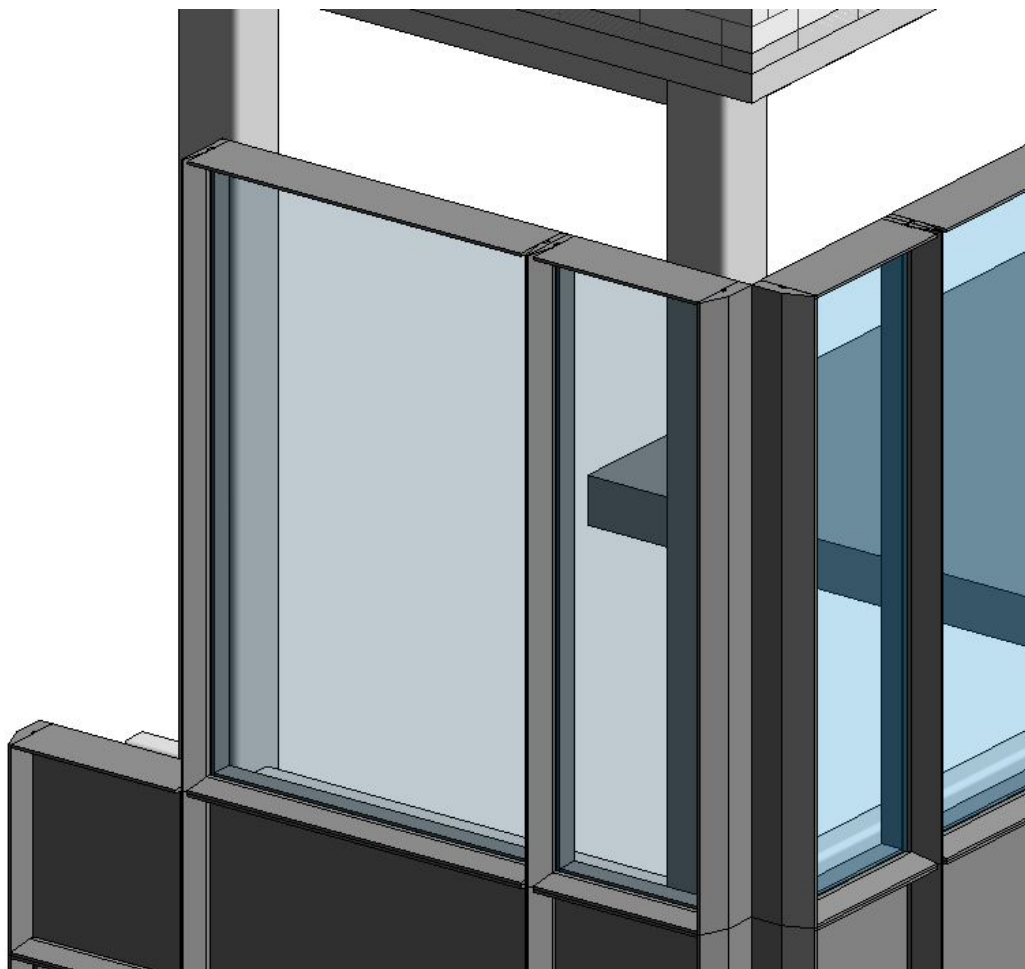


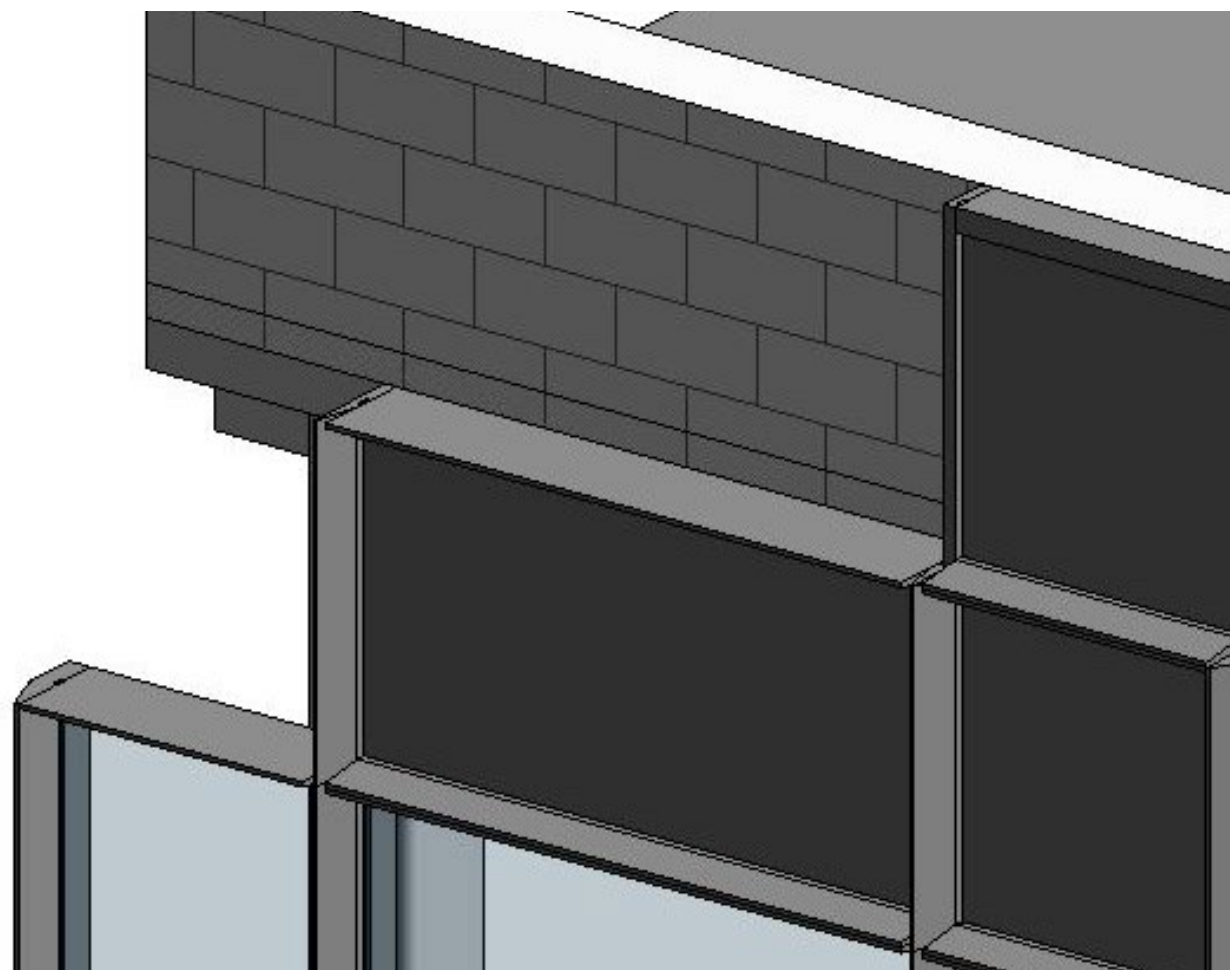
BRACKETS FOR HSS CONNECTION

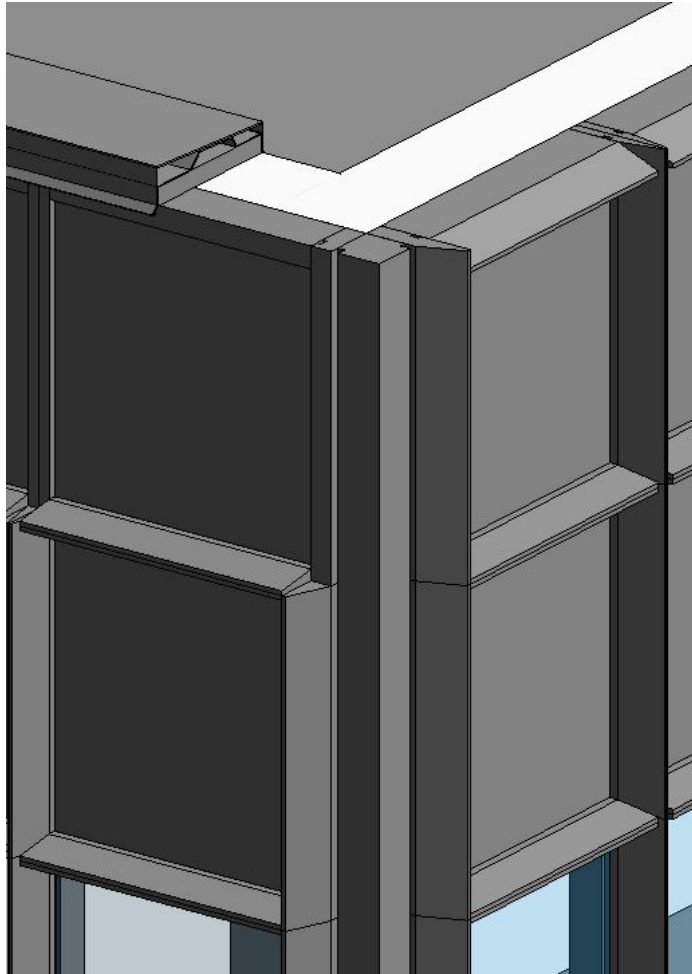




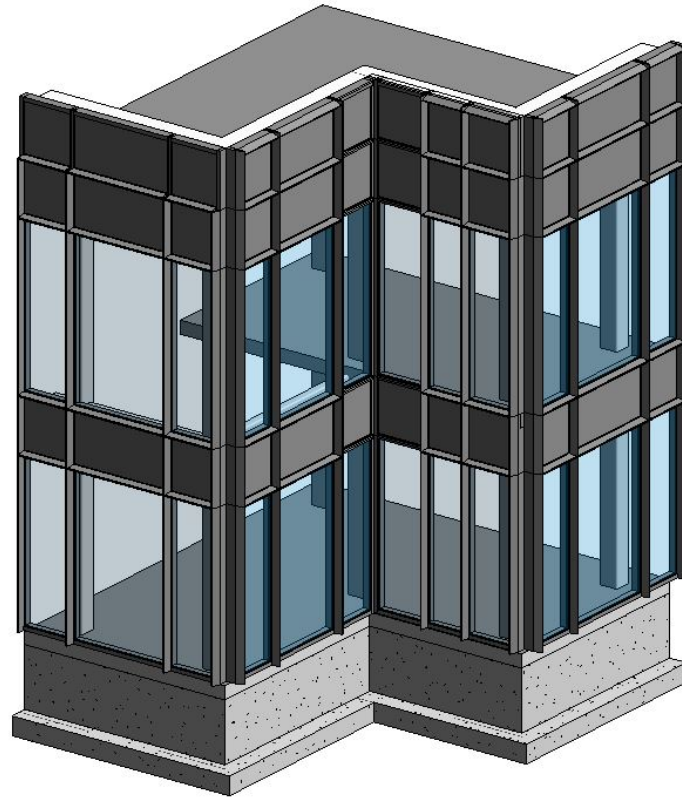


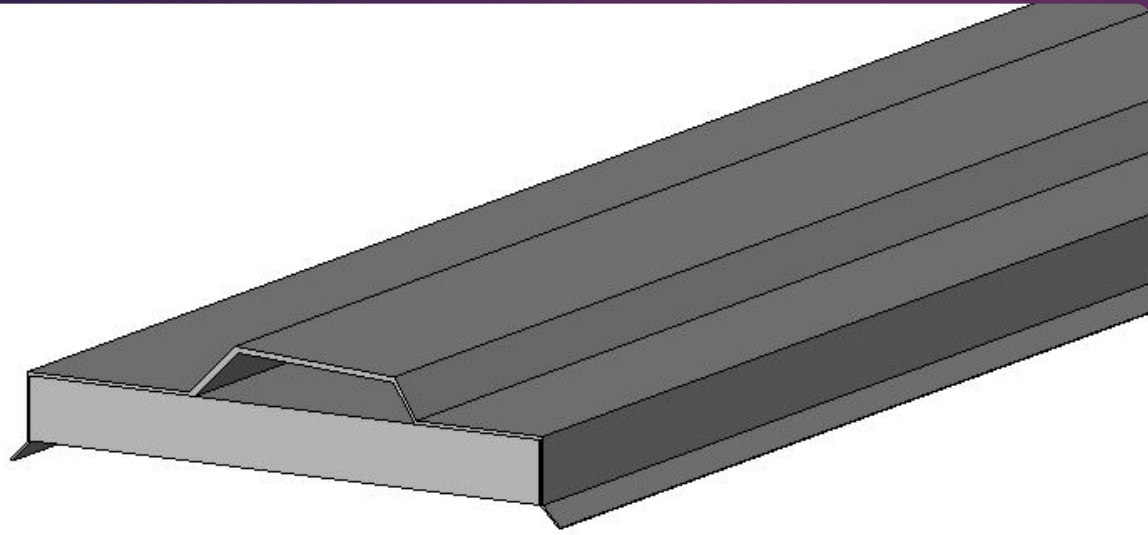




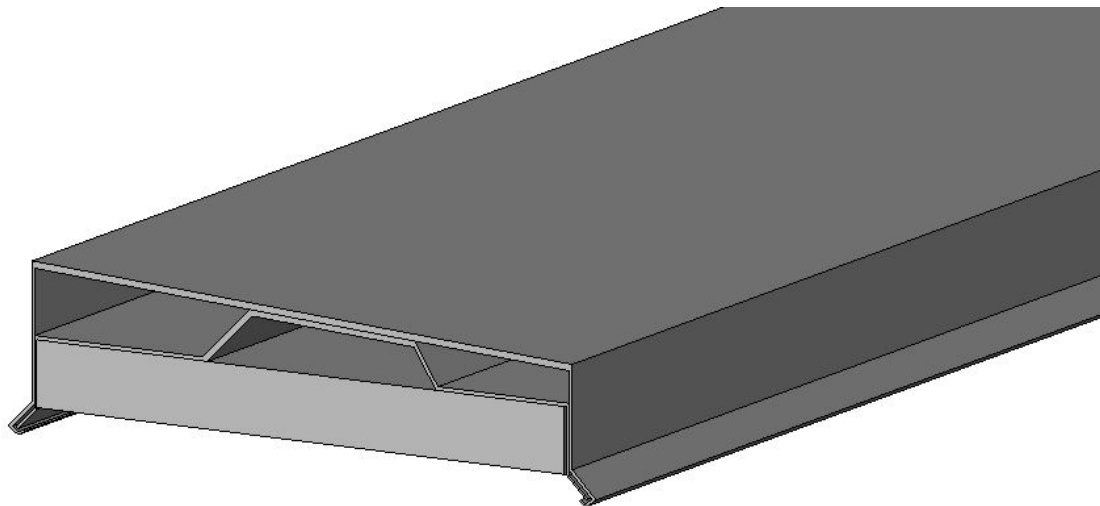


OUTSIDE
CORNER
CONDIT
ON

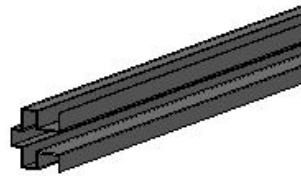
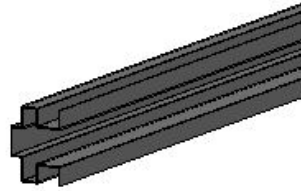
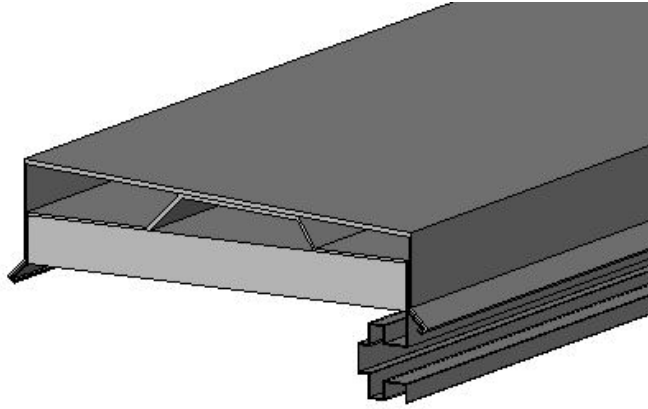




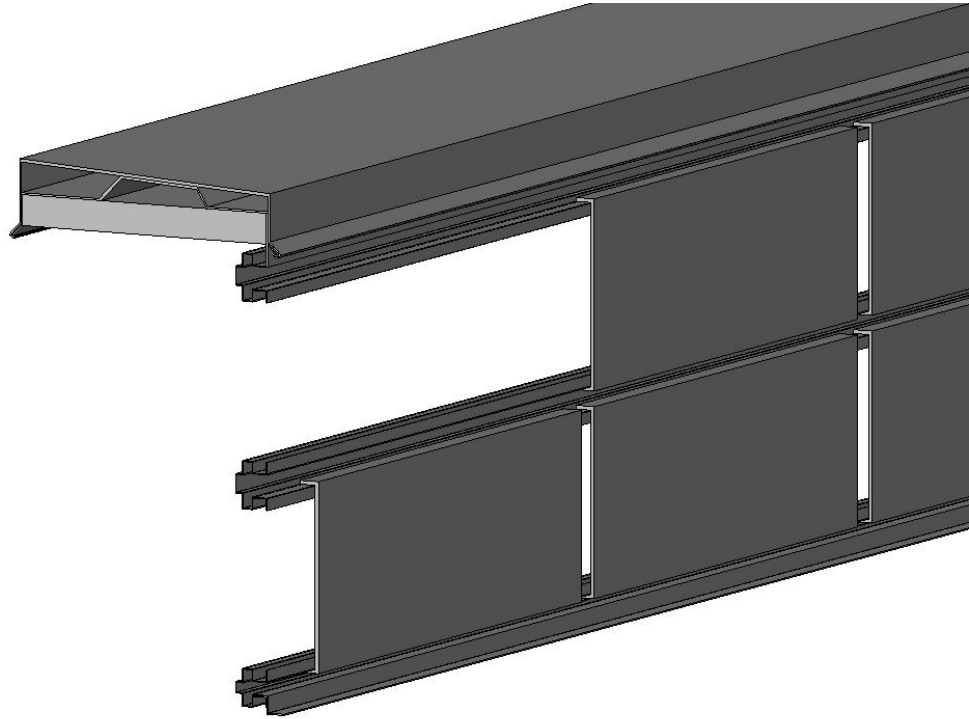
CLEAT/
WOOD
BLOCKING



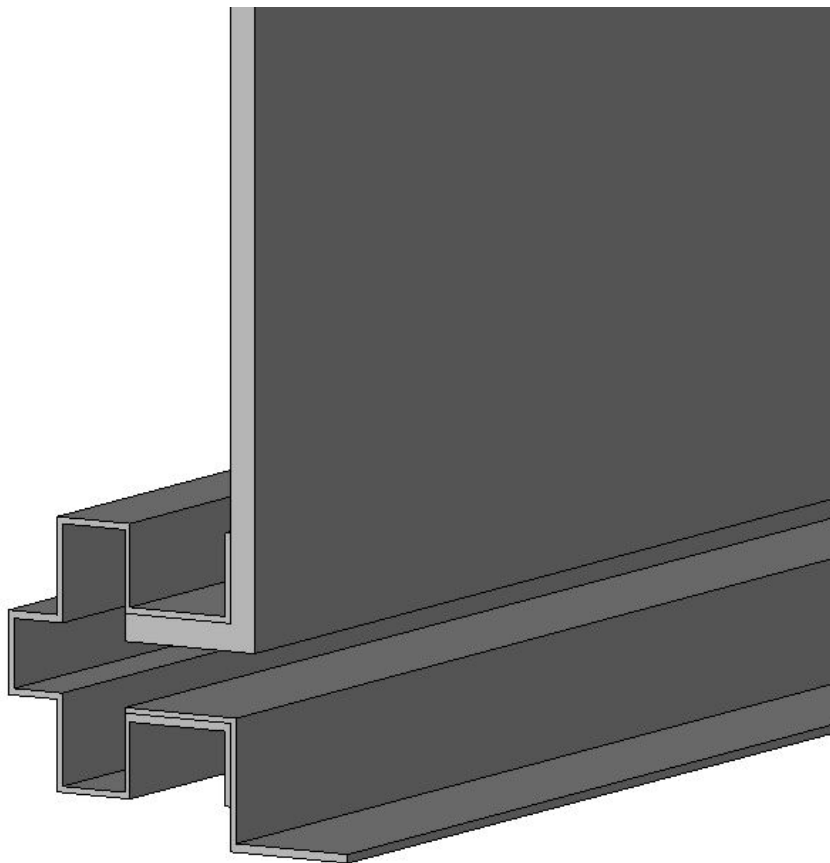
PARAPET
COPING



TYPICAL INTERMEDIATE CONNECTION



ALUMINUM COMPOSITE PANELS



PARAPET FLASHING