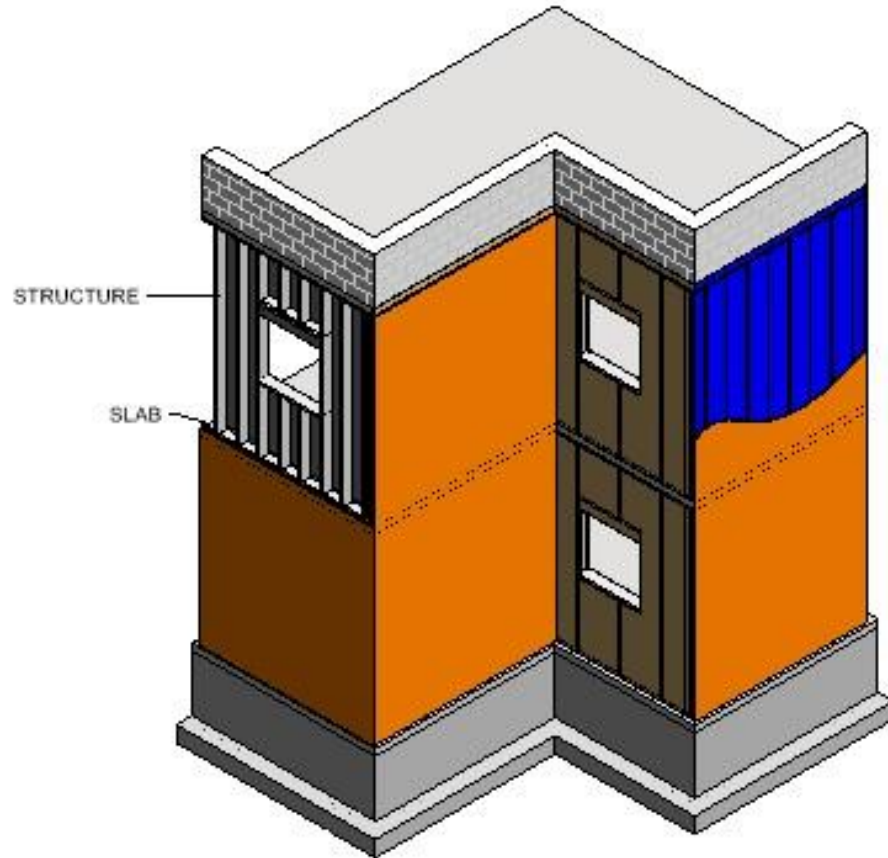


Opaque Facade Materials

Kayla Staton

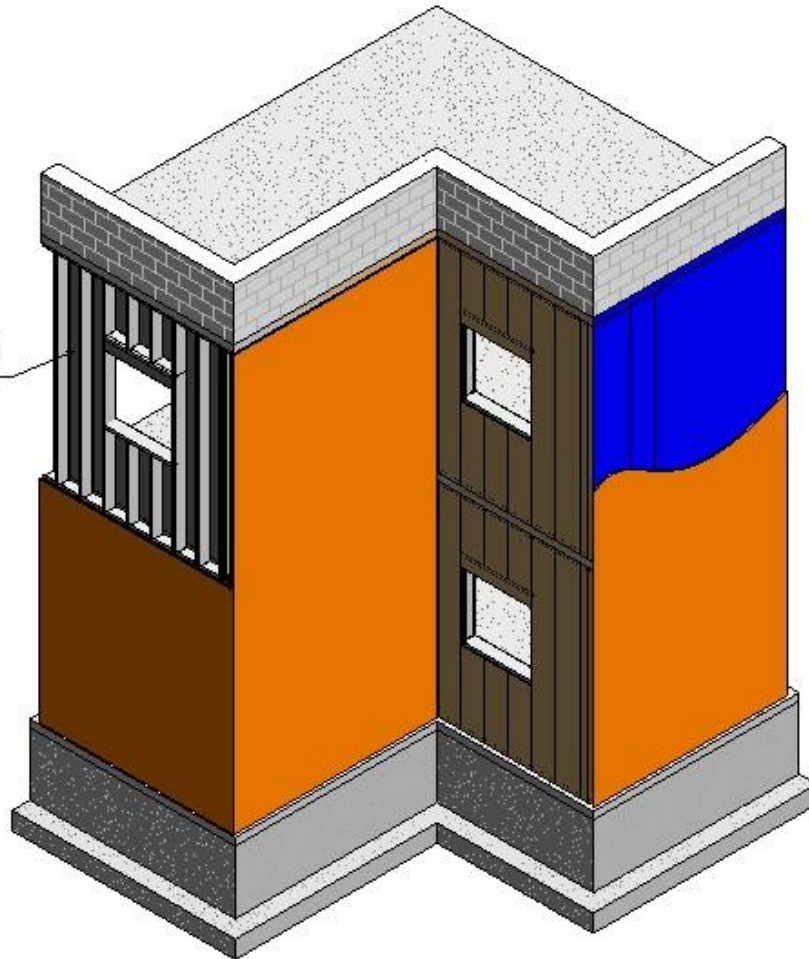
Building Technology 3 - Arch 2431 Prof. Justin
Sherman

Slide 1: Structure and Slab

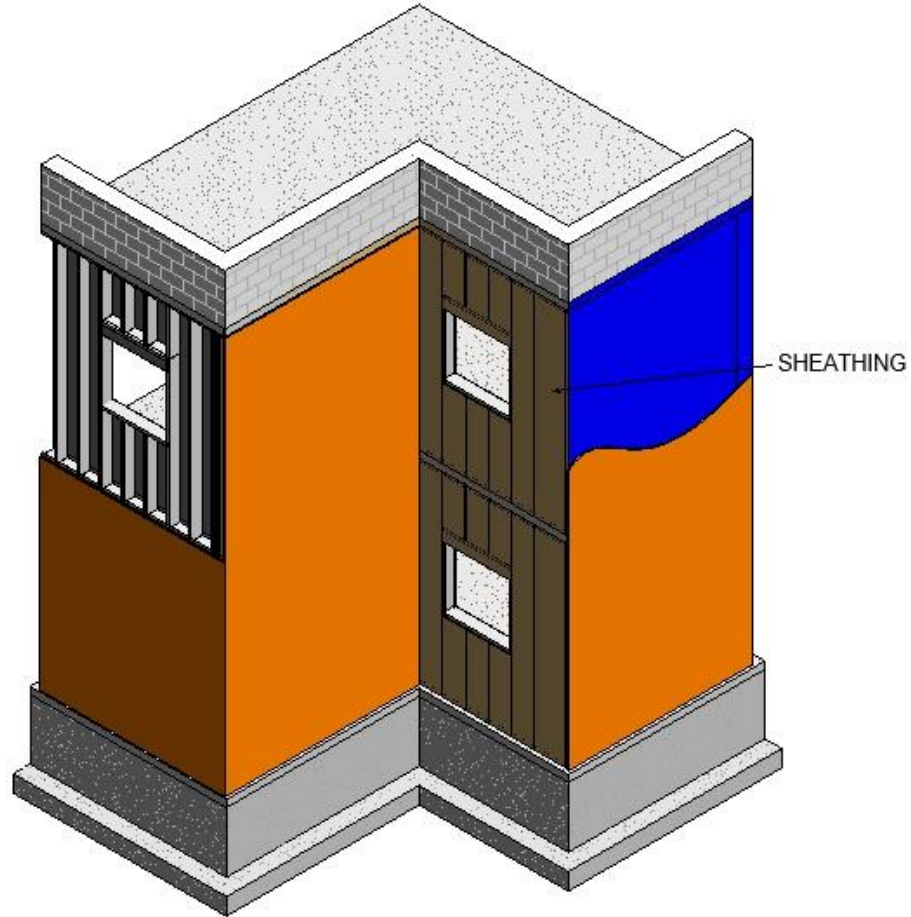


Slide 2: 5/8" GWB

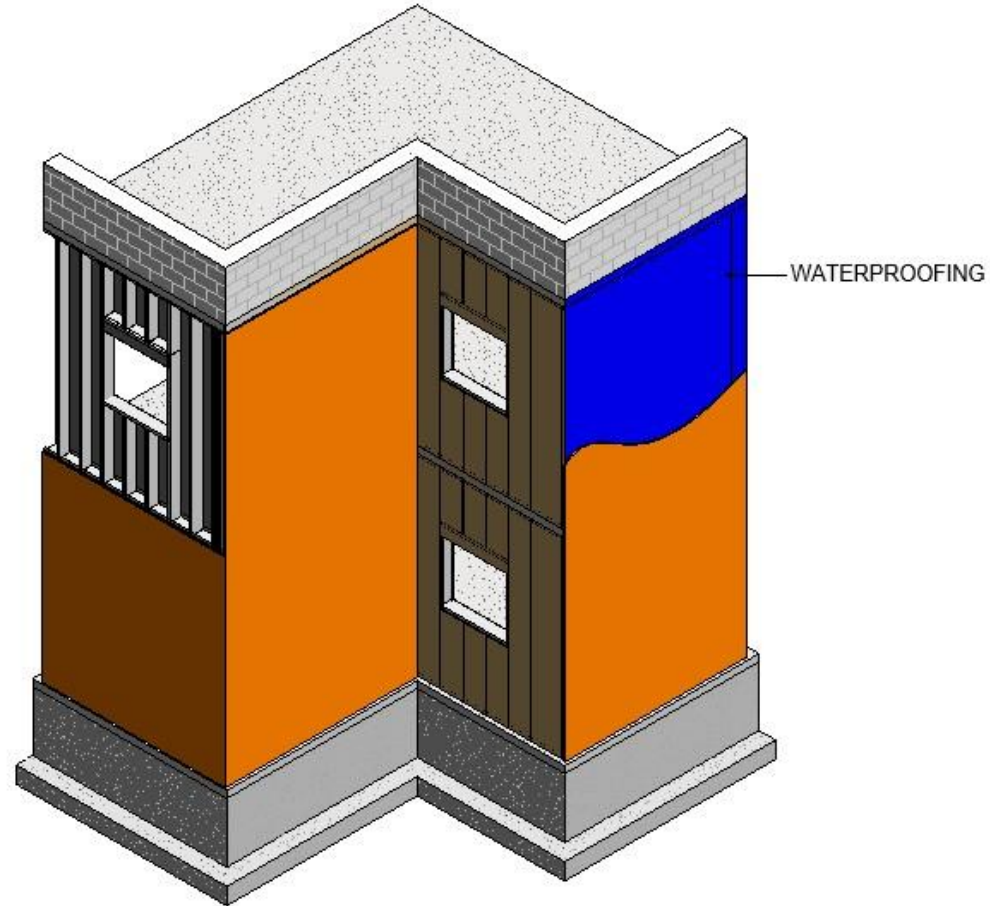
5/8" GWB
Inside



Slide 3: Sheathing



Slide 4: Waterproofing



Slide 5: 2" Rigid Insulation

