

# Preliminary Presentation

---

Alana Williams

ARCH 2431 - Prof. King - SP20

Team Member: Carrie Mendoza



## Opaque Material Case Study

### IBEW Local 134 Union Hall

- Chicago, IL

# Opaque Material Detail Information

- **Sobotec Metal Panels**
- *SL-1000P*
- Caulked Joint System
- Material: 1/8" Aluminum Plate
- Standard Joint Size: 1/2"

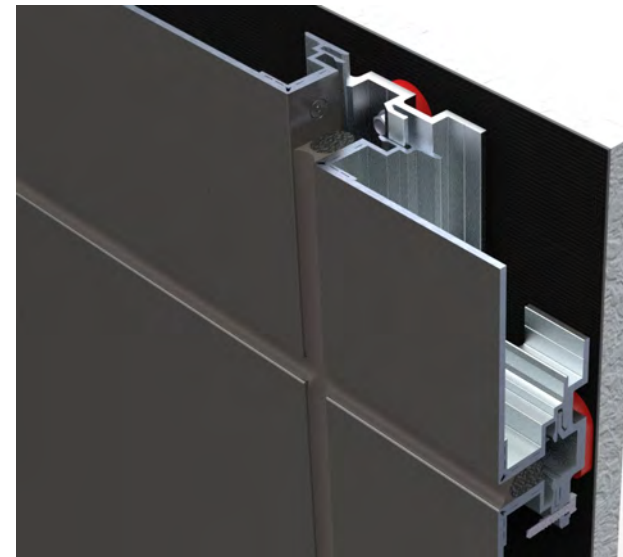
<https://www.sobotec.com/products/aluminum/>

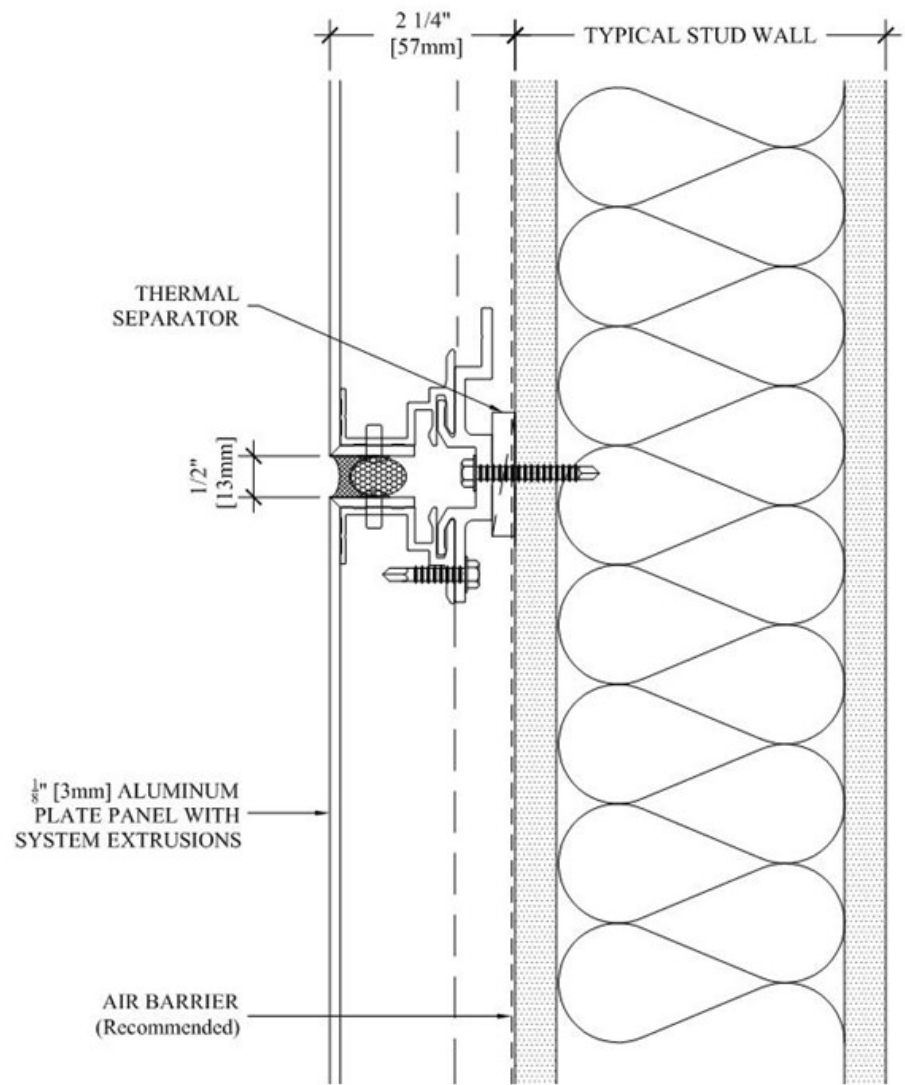
This heavy gauge, solid plate PER system is used on monumental projects where a floating, exposed panel edge appearance is desired. The attachment system is custom engineered using welded studs to minimize heat transfer to the face of the panel.

The panel joint is typically recessed and finished in a dark color to create a shadow effect. Alternatively, the joint size, finish and configuration can be modified to suit project specifications. The SL-5000P system has been fully tested to satisfy all code requirements in addition to full scale testing of individual panels to establish stud behavior under various loads.

#### Special Features

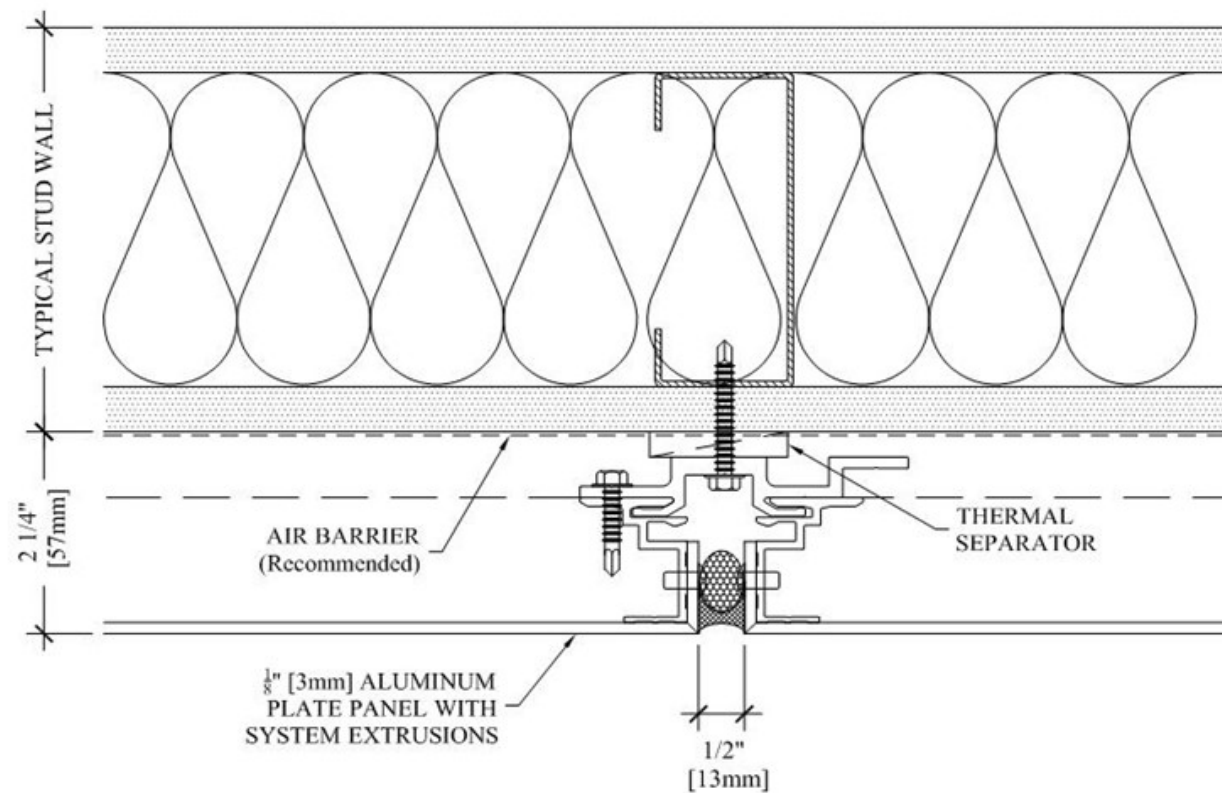
- Pressure Equalized Rainscreen System
- Floating appearance with an exposed painted panel edge
- Low-maintenance, flexible panel design





SL-1000P HORIZONTAL JOINT

NOTTO SCALE



SL-1000P VERTICAL JOINT

NOTTO SCALE

# Opaque Material Videos





# Glass Curtain Wall Material Case Study

## Lewis Communication Building

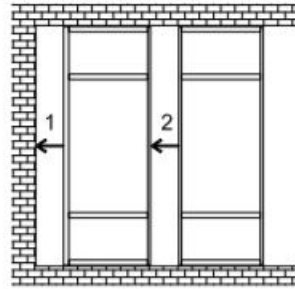
- Birmingham, AL



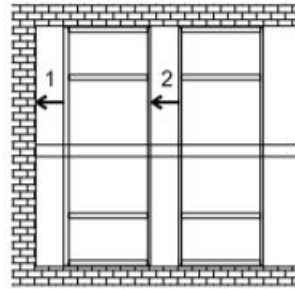
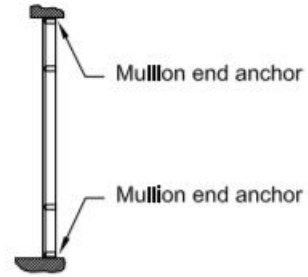
## Glass Curtain Wall Material Detail Information

- **Oldcastle Building Envelope**
- *Reliance™-IG SS* Curtain Wall
- Front set wall system
- 7-1/2" depth, using either captured or structural silicone glazed verticals
- Screw spline assembly of frames
- Not assembled by factory

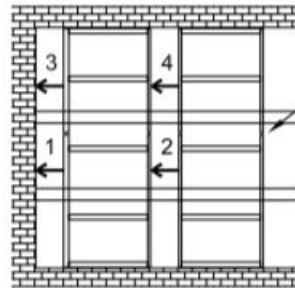
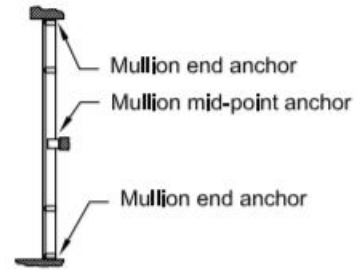




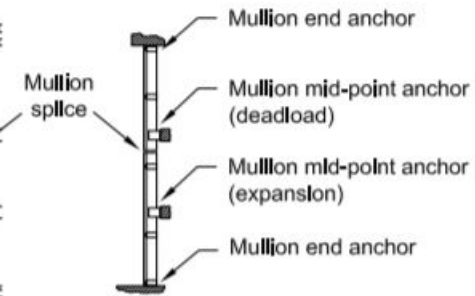
Single Span



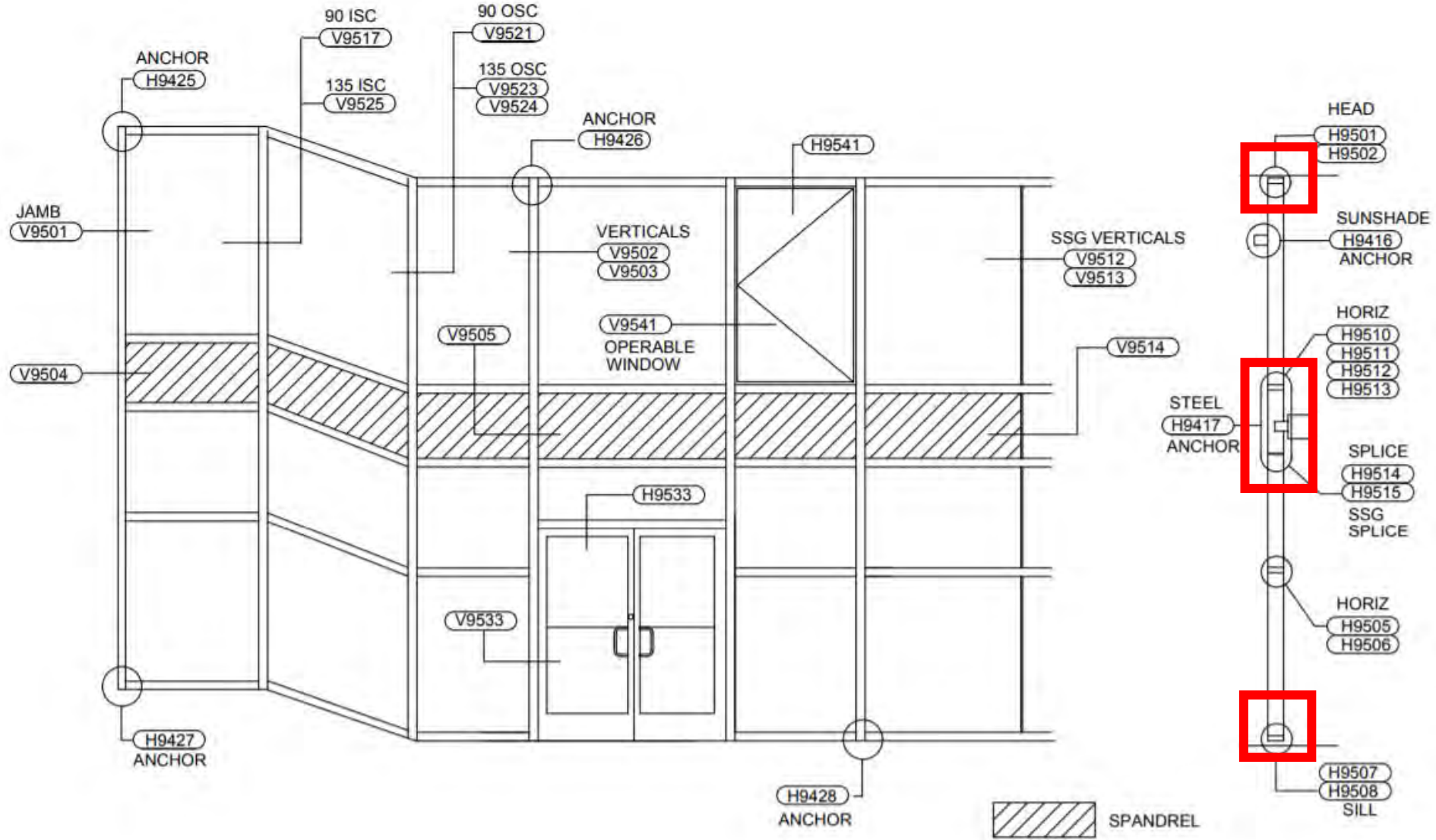
Twin Span



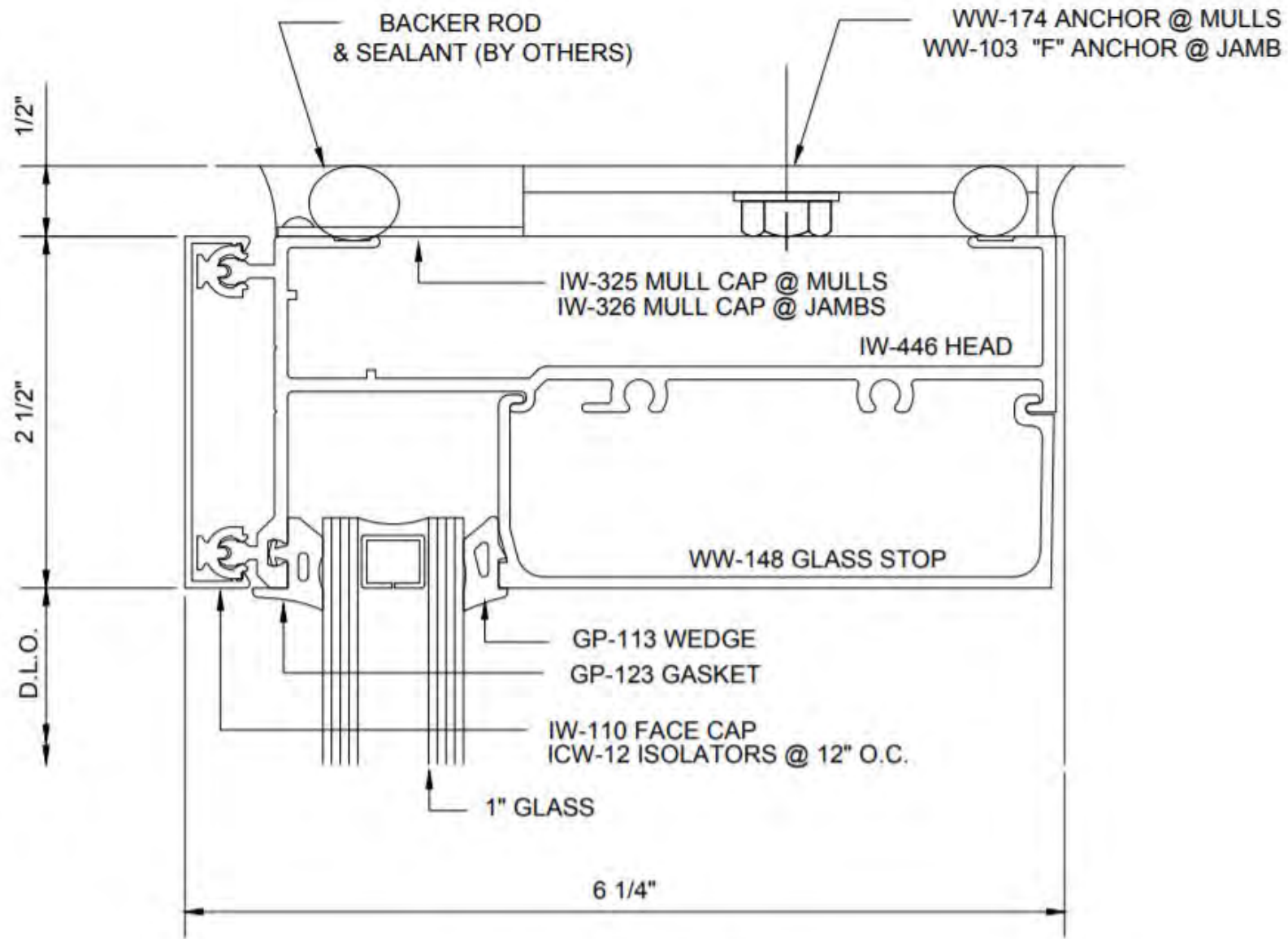
Multi-Span



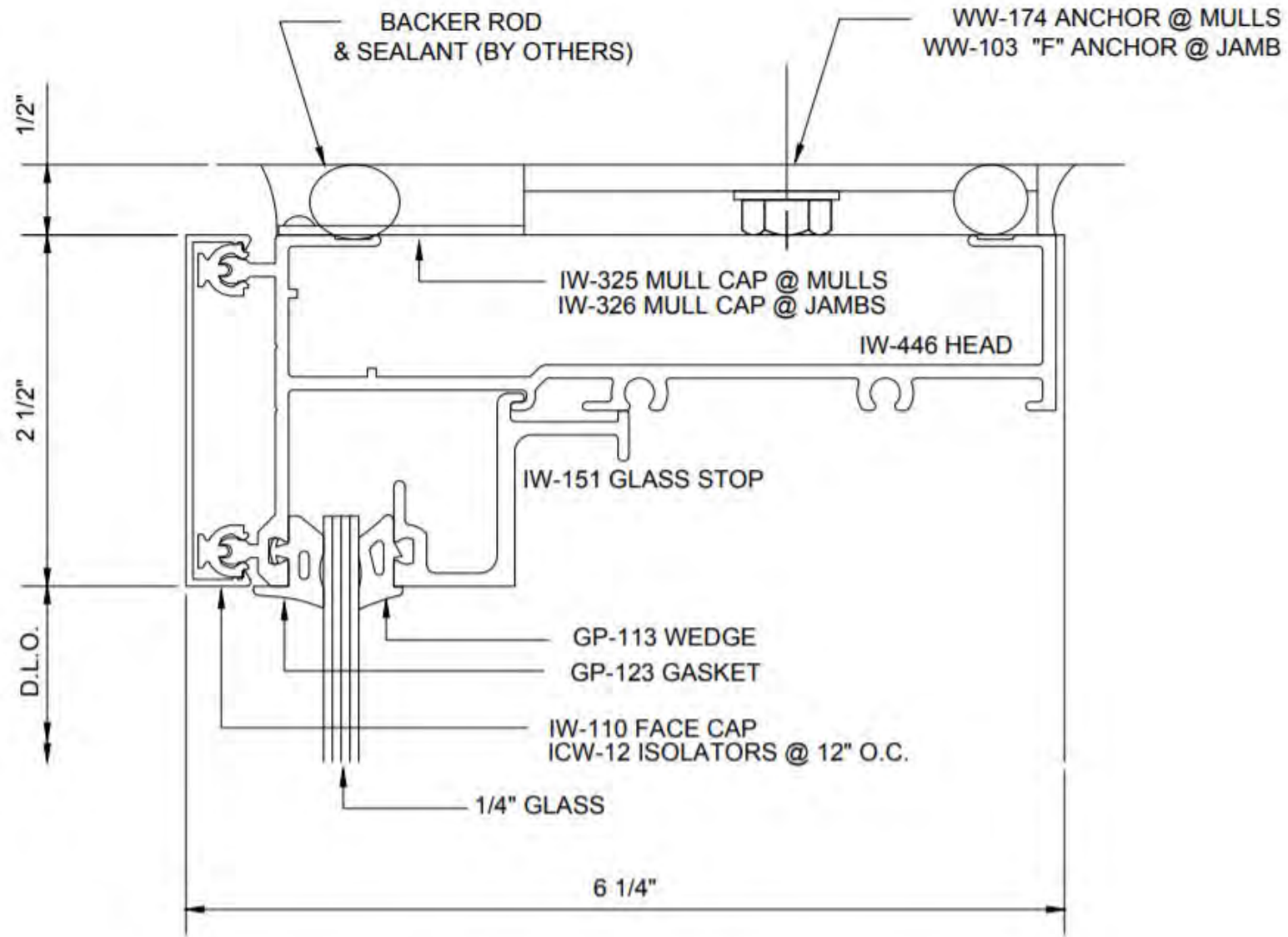




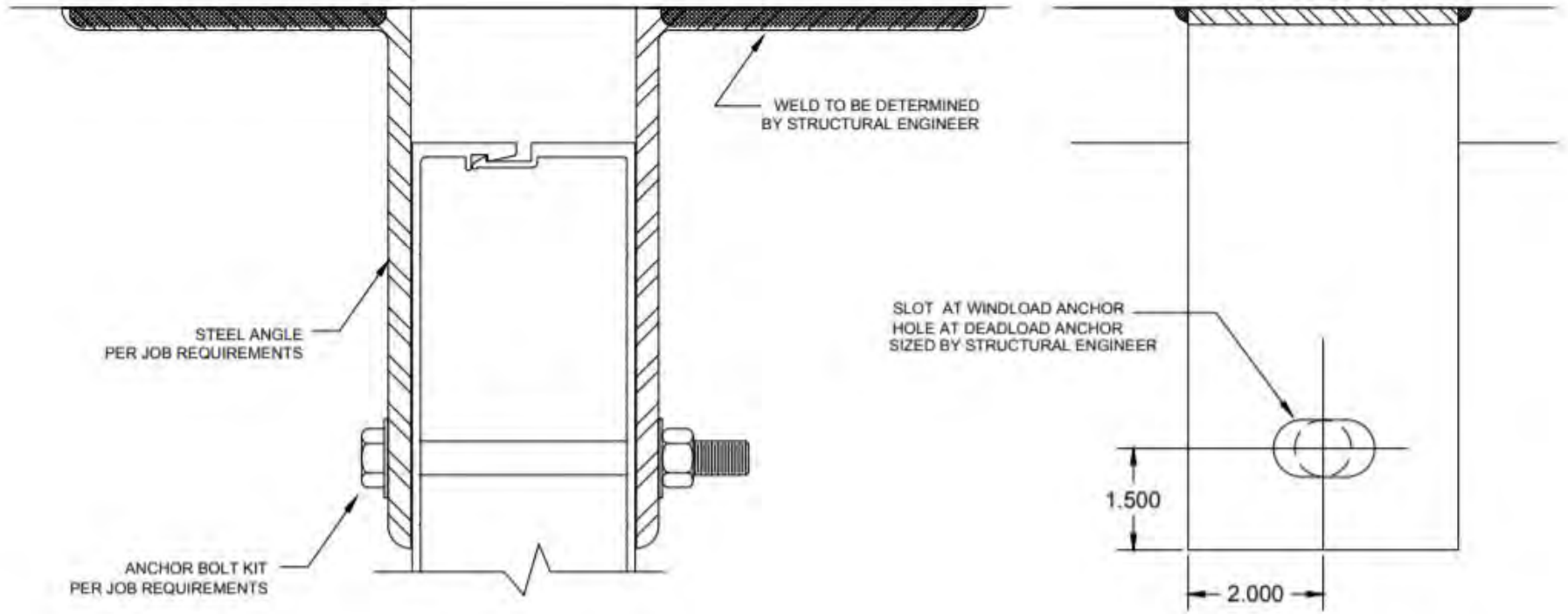
**Reliance™-IG SS Curtain Wall**  
**2-1/2" x 6-1/4" w/ 1" Glazing - Elevation**



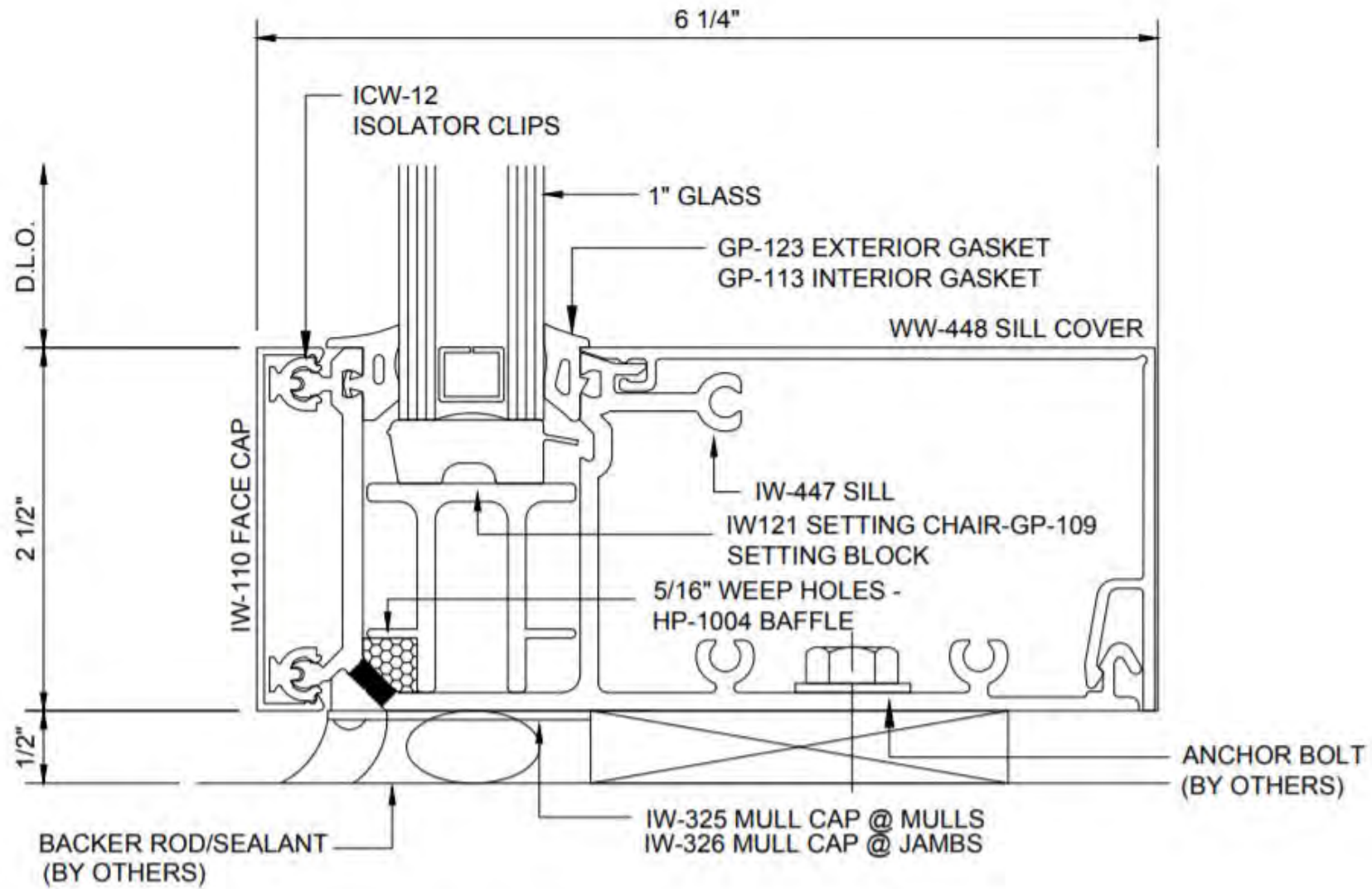
**Reliance™-IG SS**  
**Head Horizontal at Vision - H9501**



Reliance™-IG SS  
Head Horizontal at Spandrel - H9502

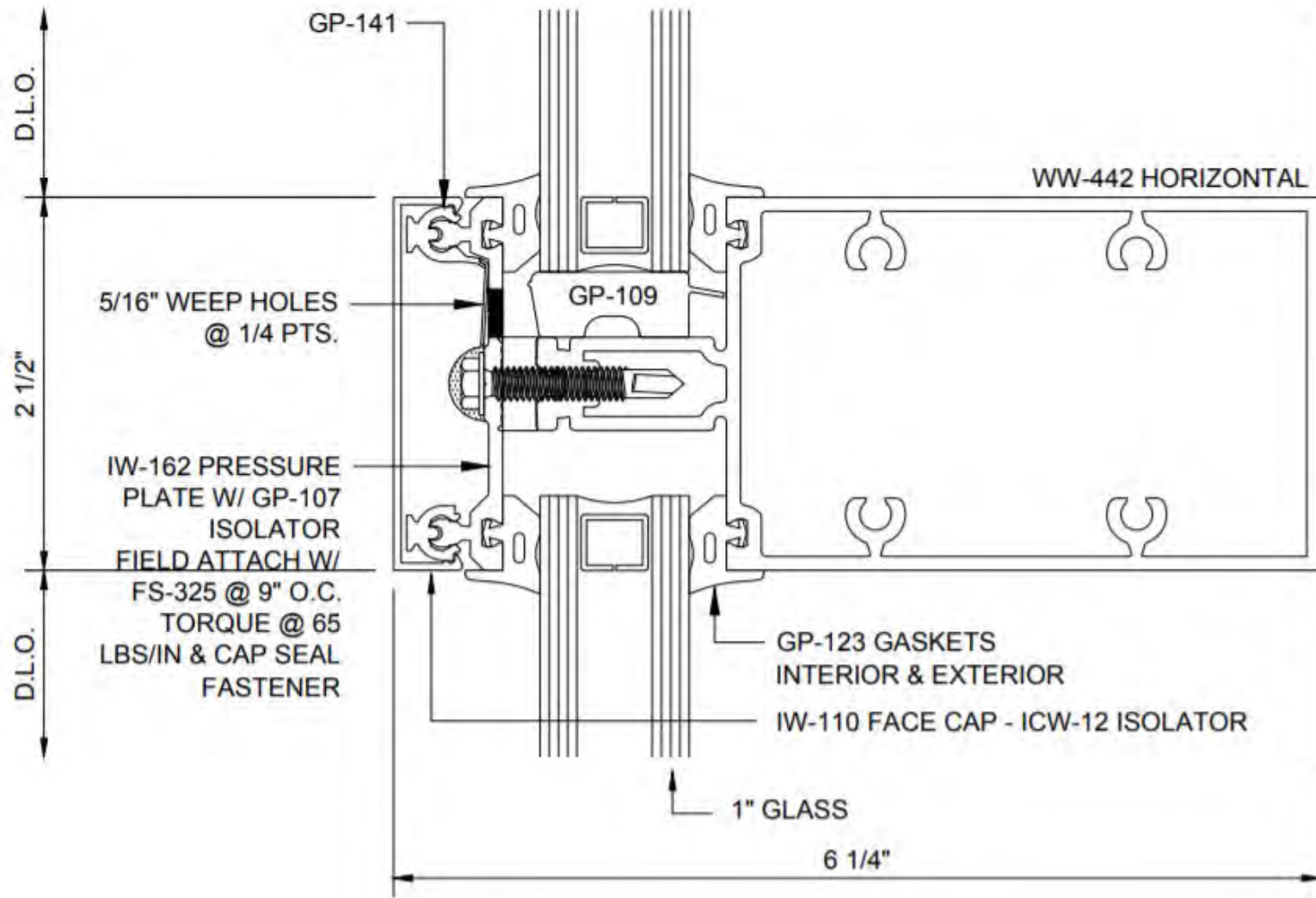


**Reliance™-IG SS**  
**Steel Anchoring - H9417**



Reliance™-IG SS  
Sill at Vision - H9508





Reliance™-IG SS  
Horizontal at Vision - Outside Glazed - H9510

# Glass Curtain Wall Material Videos

