

SCREEN CAPTURES FROM REVIT

OUSMANE CAMARA

ARCH 2431

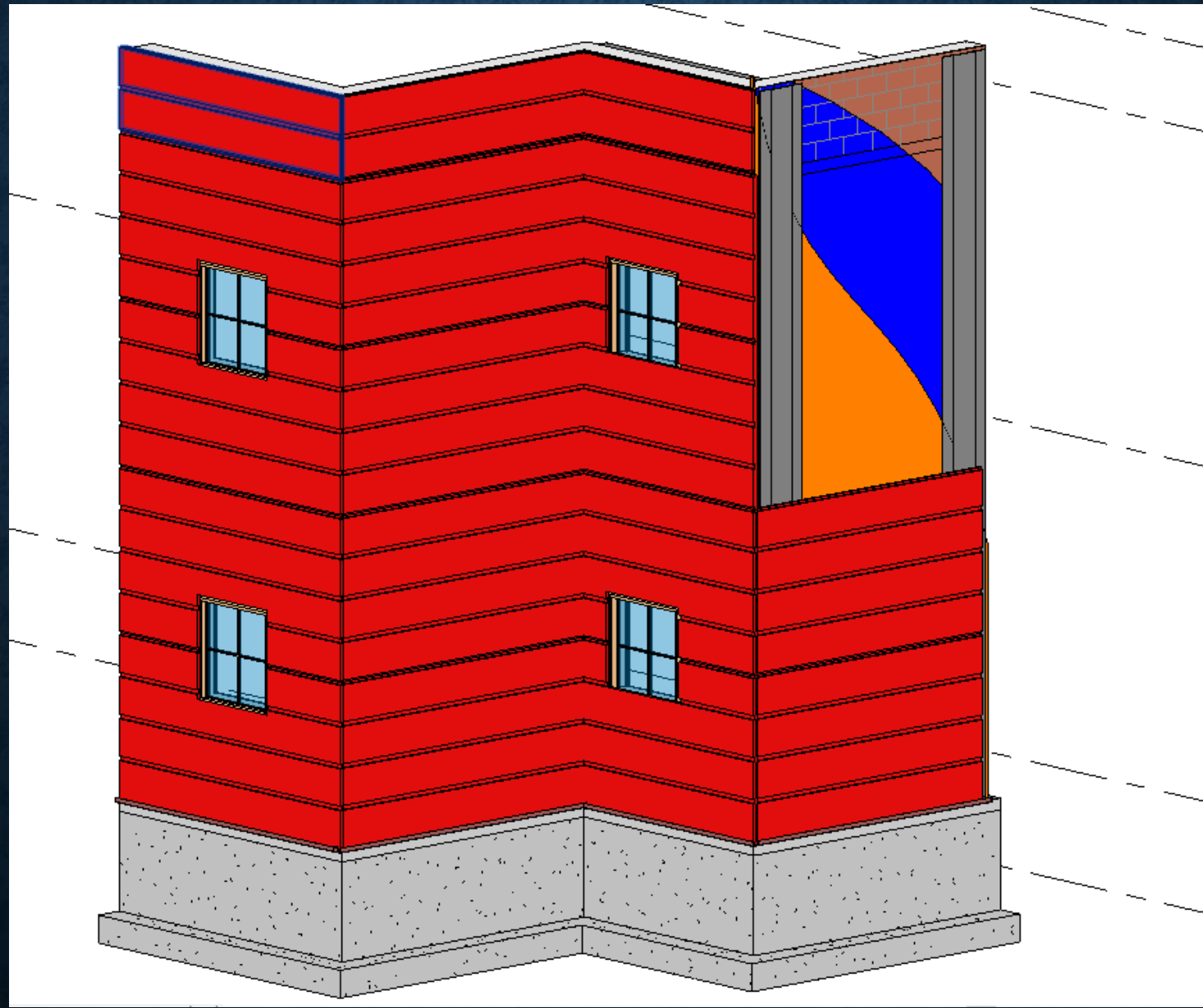
BUILDING

TECHNOLOGY III

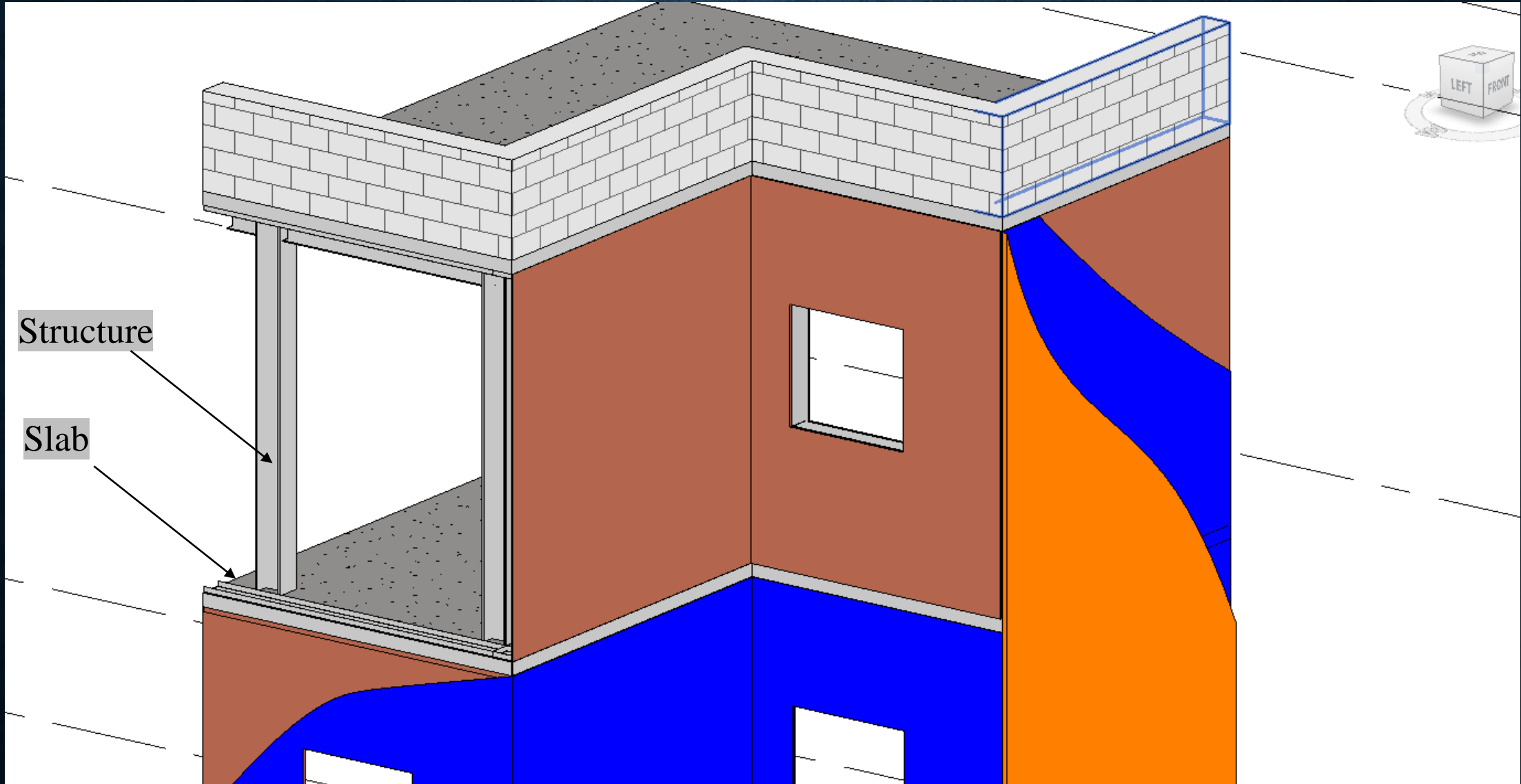
PROFESSOR: JUSTIN

SHERMAN

OPAQUE WALL- METAL CLADDING PANEL

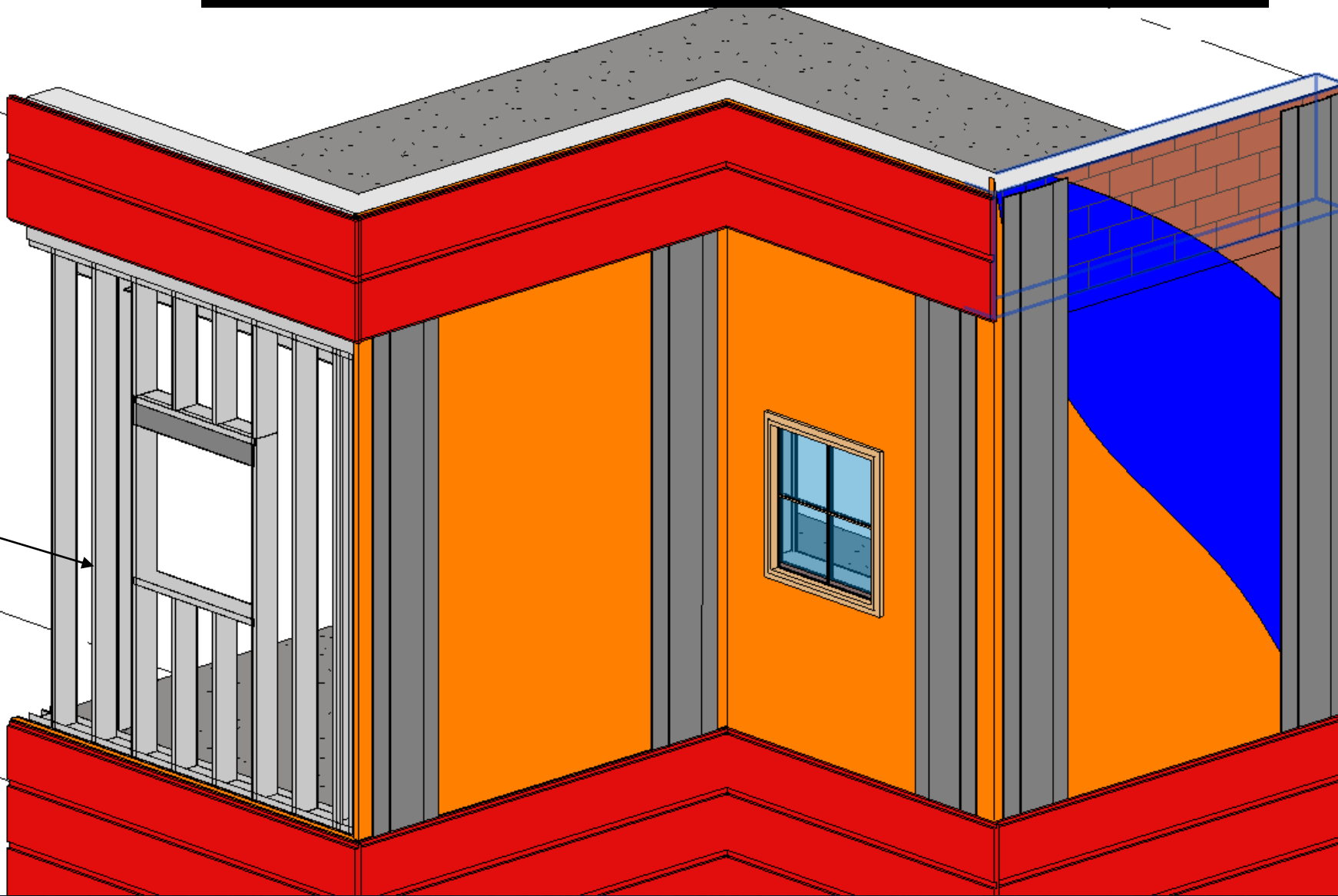


SLABS AND STRUCTURE



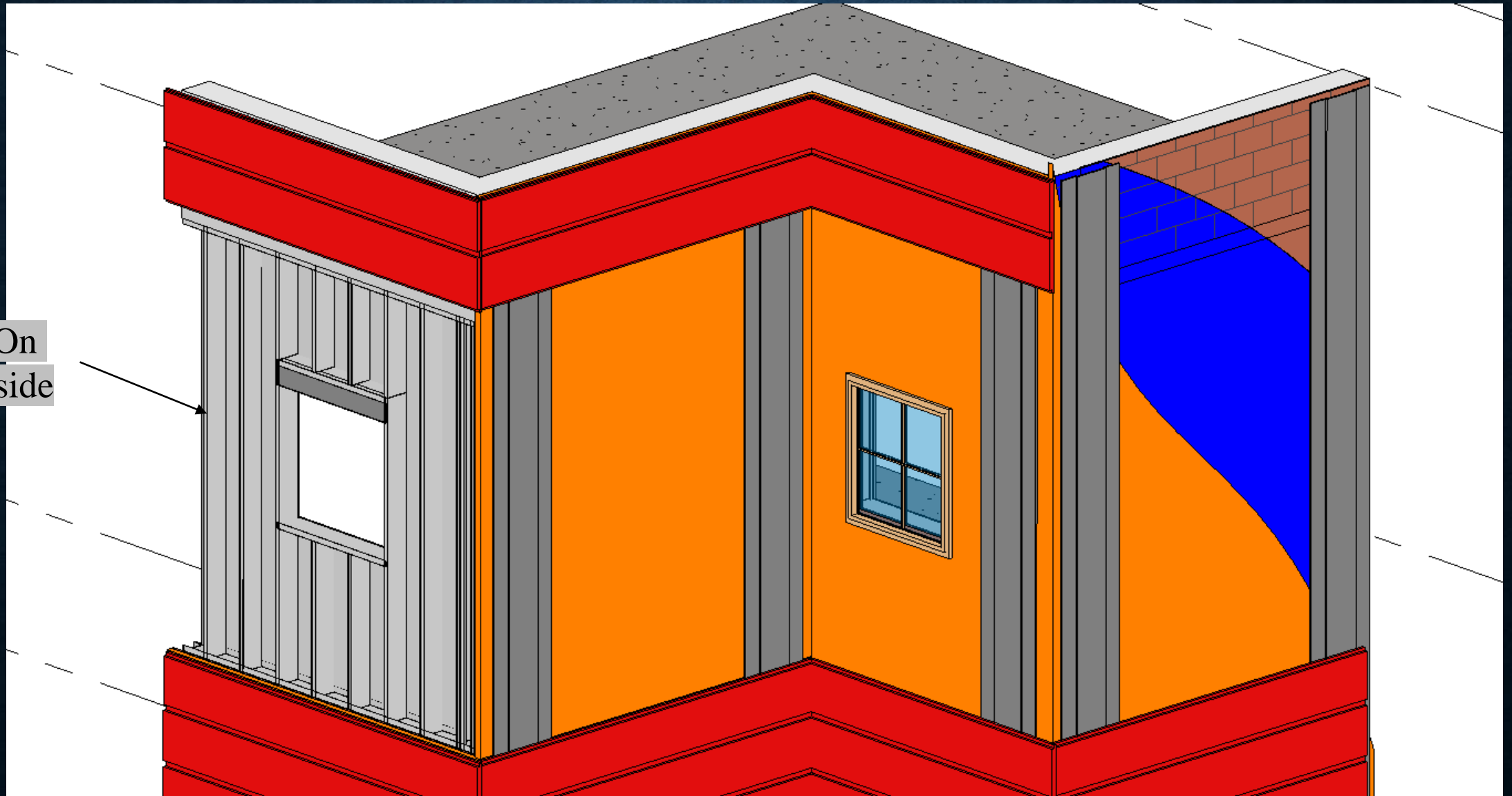
8" METAL STUD FRAME

Metal Stud
and Frame



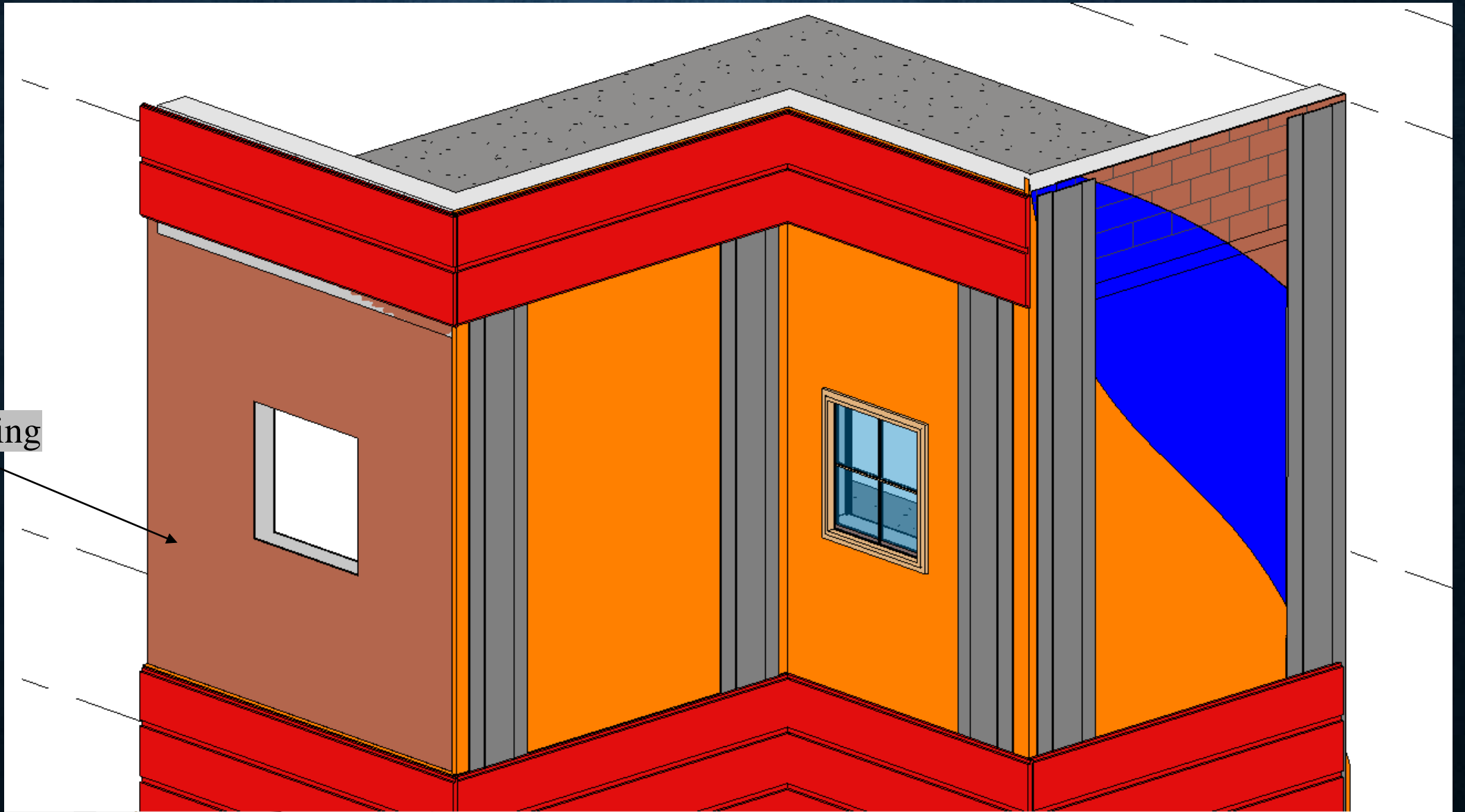
5/8" GWB ON THE INSIDE

GWB On
The Inside

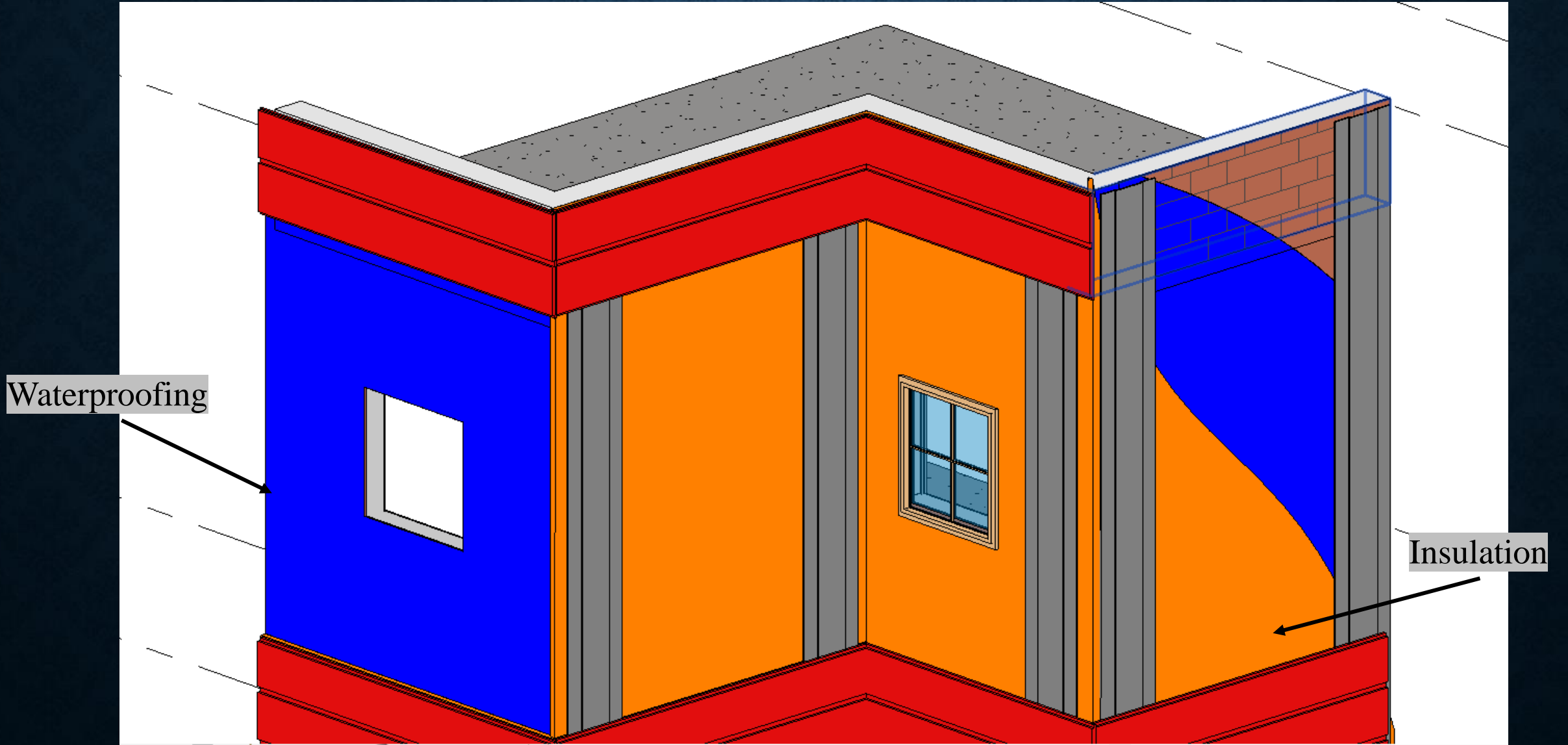


SHEATHING ON THE OUTSIDE

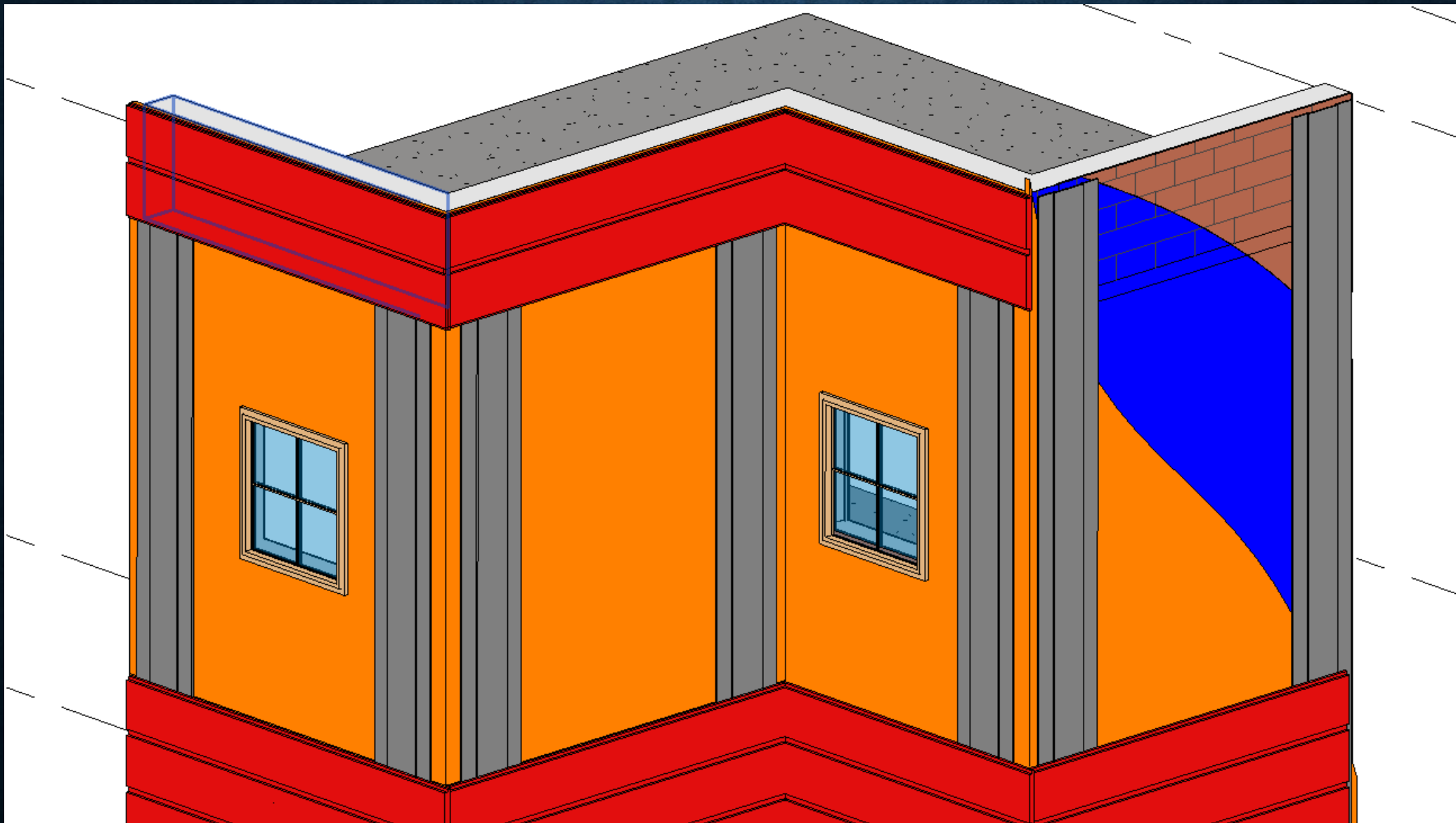
Sheathing



WATERPROOFING LAYER



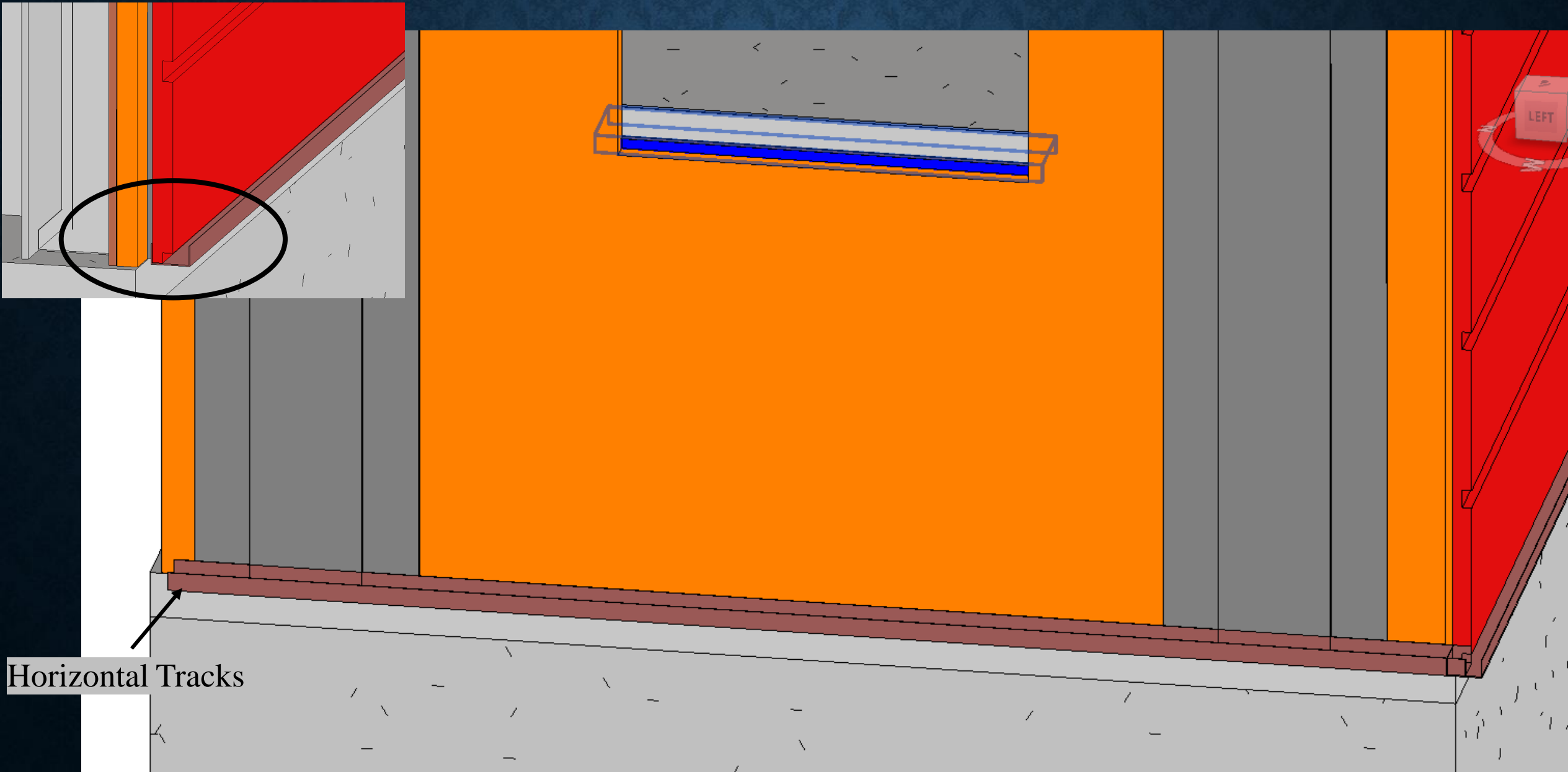
VERTICAL TRACKS



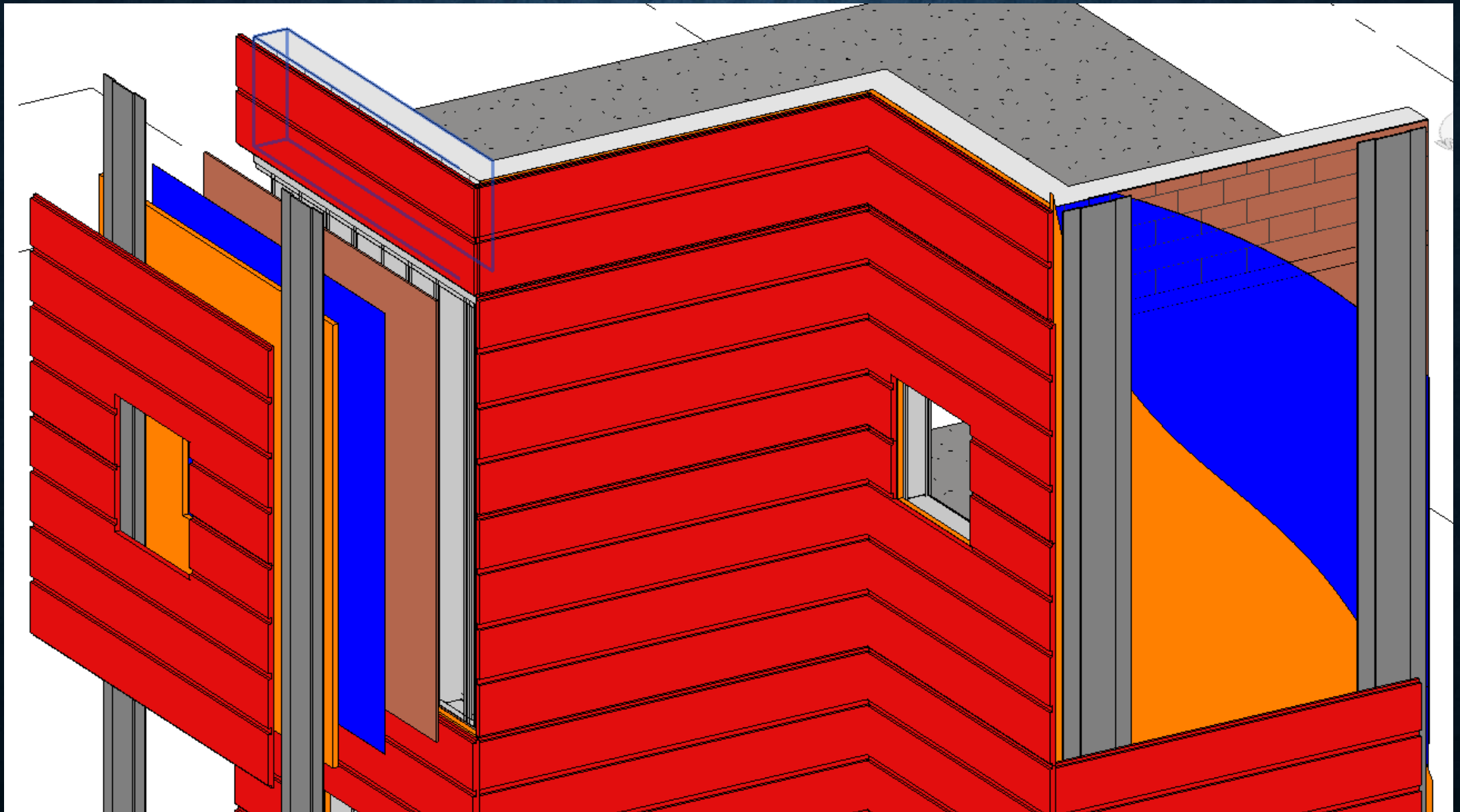
VERTICAL TRACKS



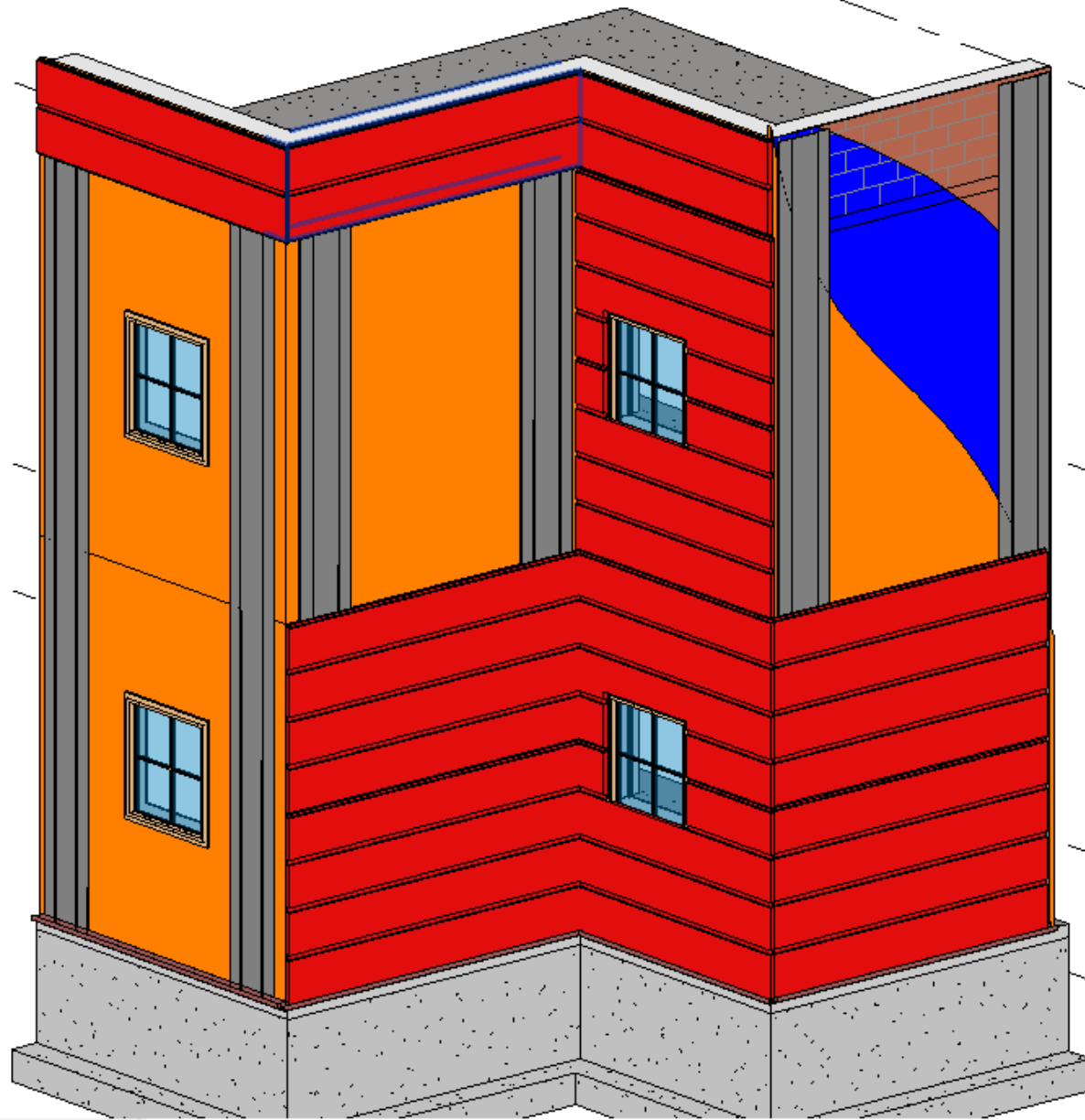
HORIZONTAL TRACKS



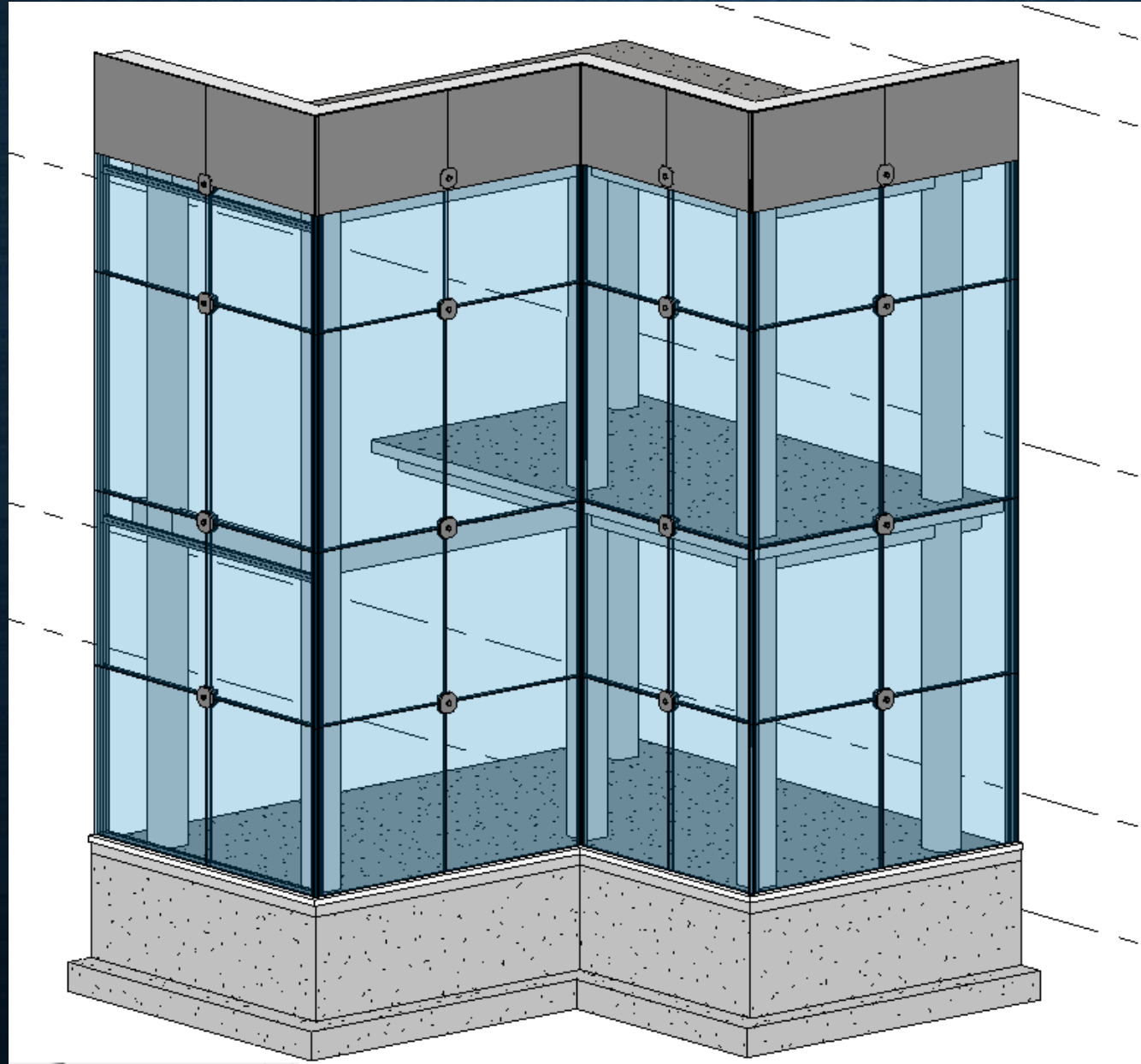
EXPLODED VIEW



OVERALL VIEW

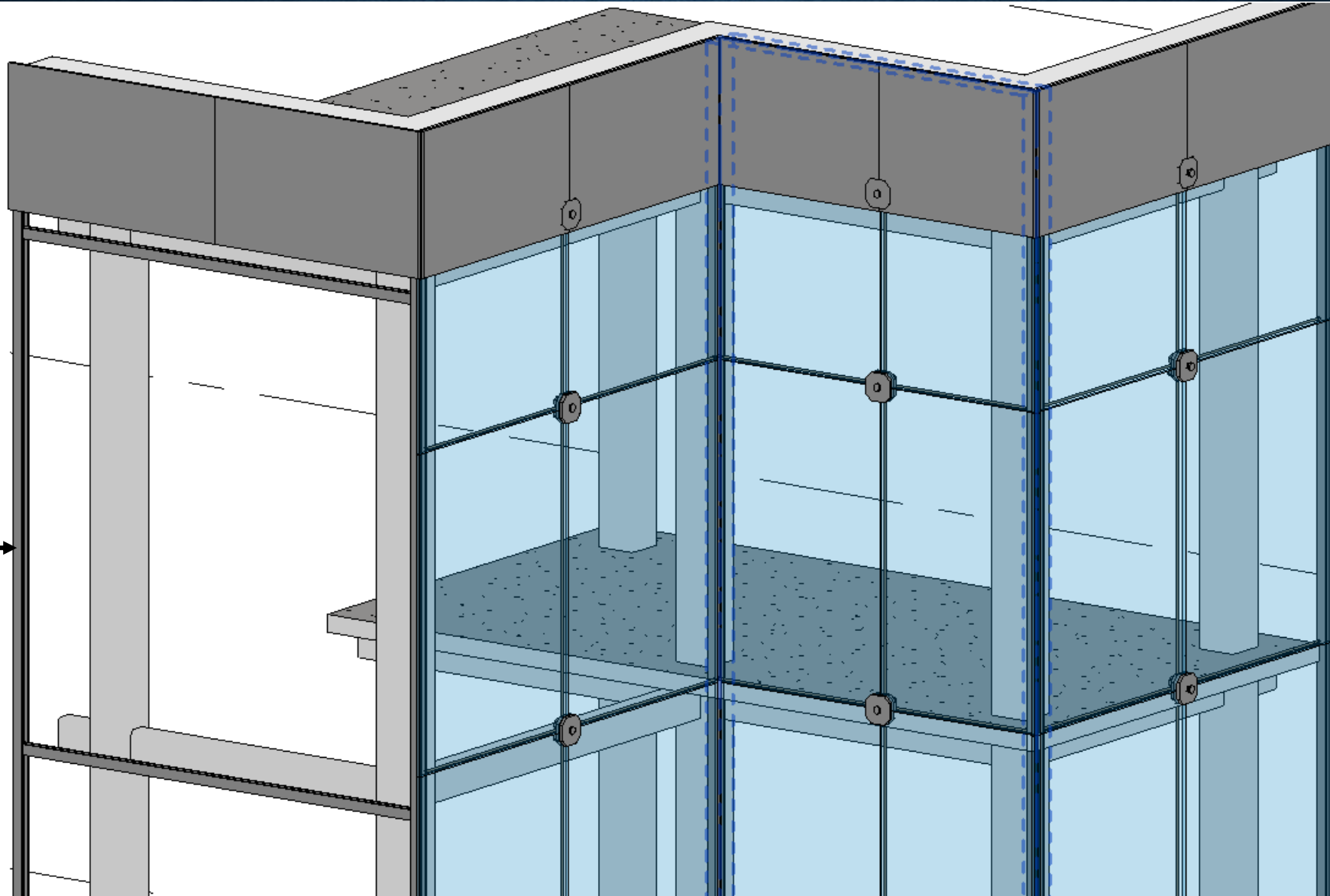


CURTAIN WALL GLASS CABLE TENSILE

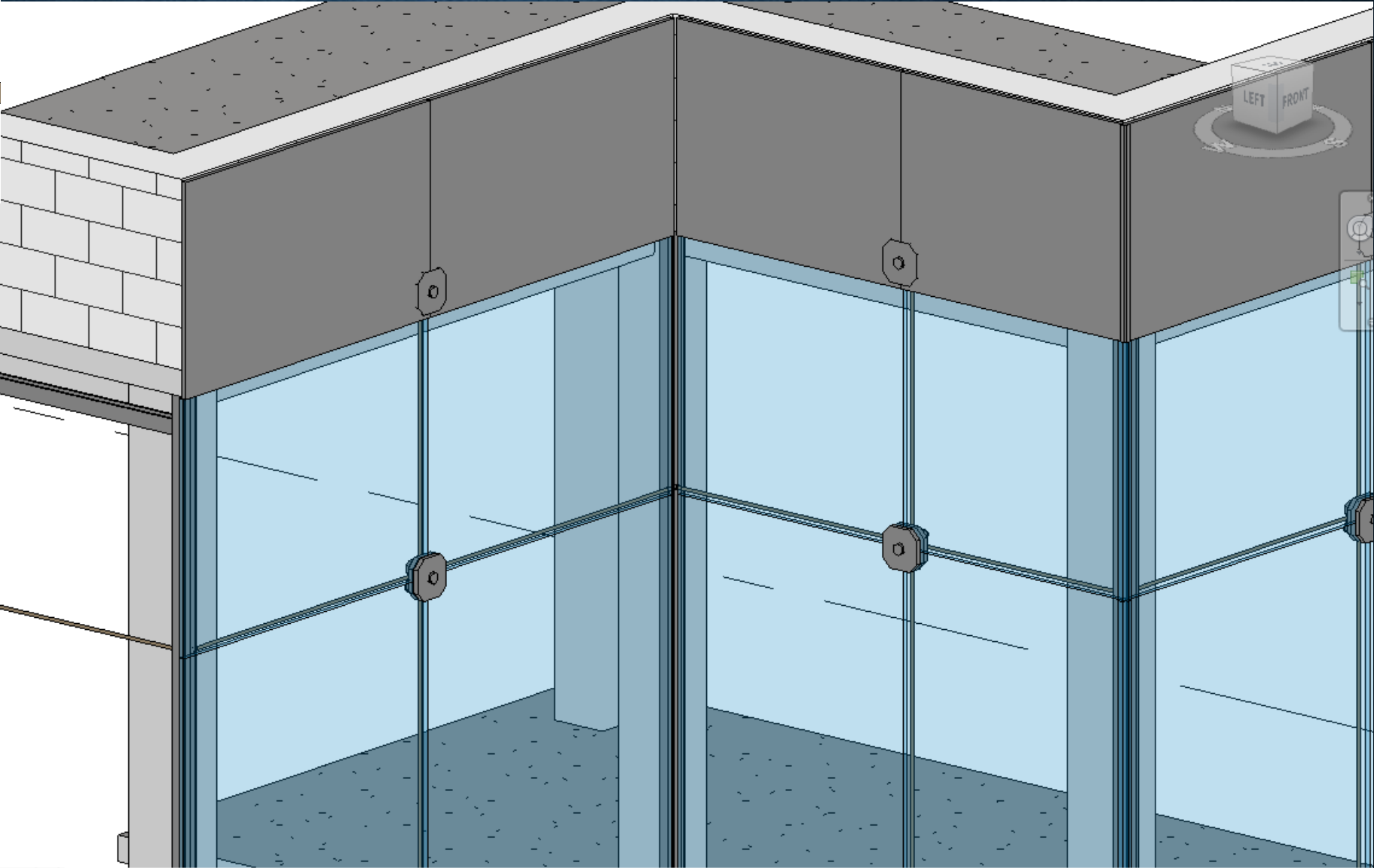
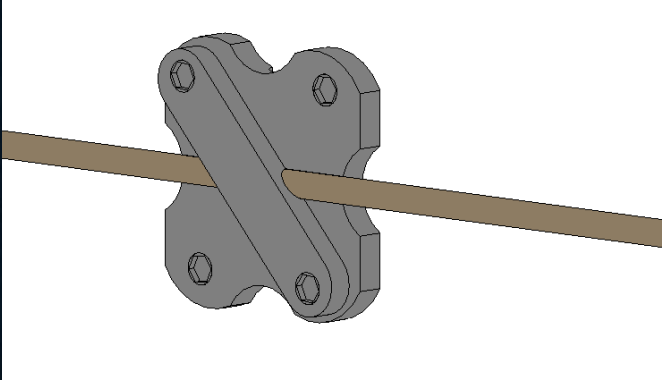


STEEL FRAME

Wall Steel
Frame

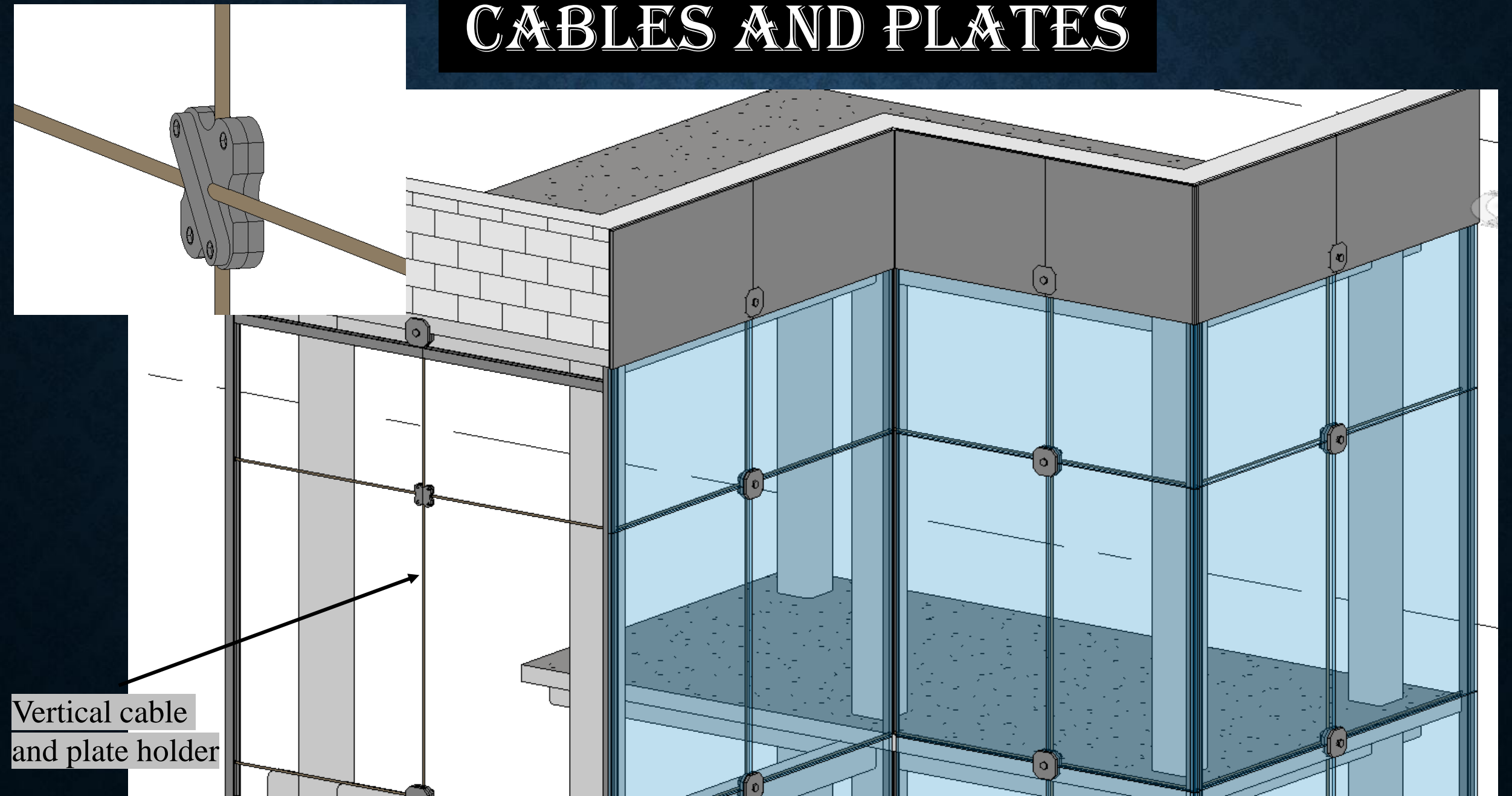


CABLE AND PLATES



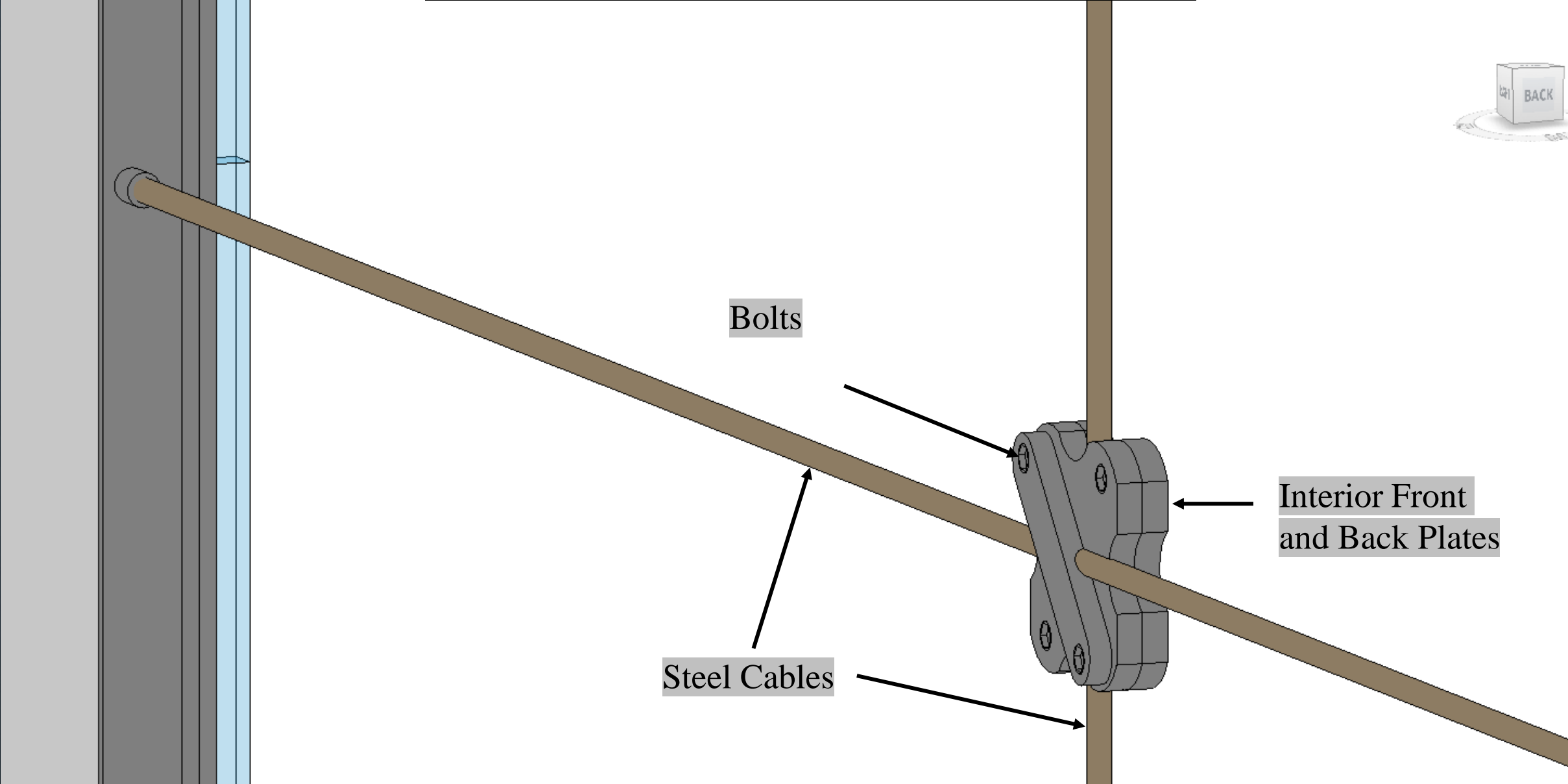
Horizontal cable and plate holder

CABLES AND PLATES

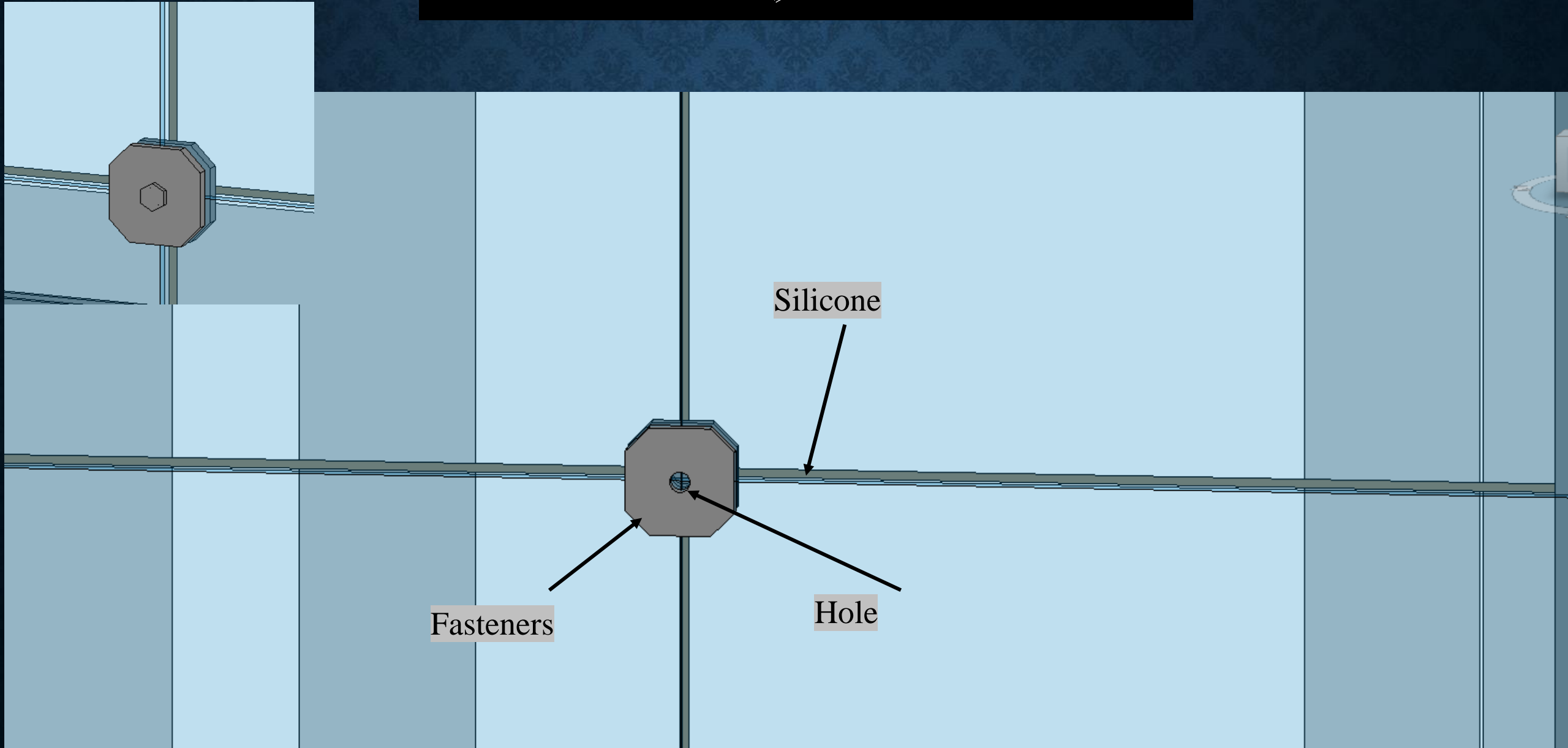


Vertical cable
and plate holder

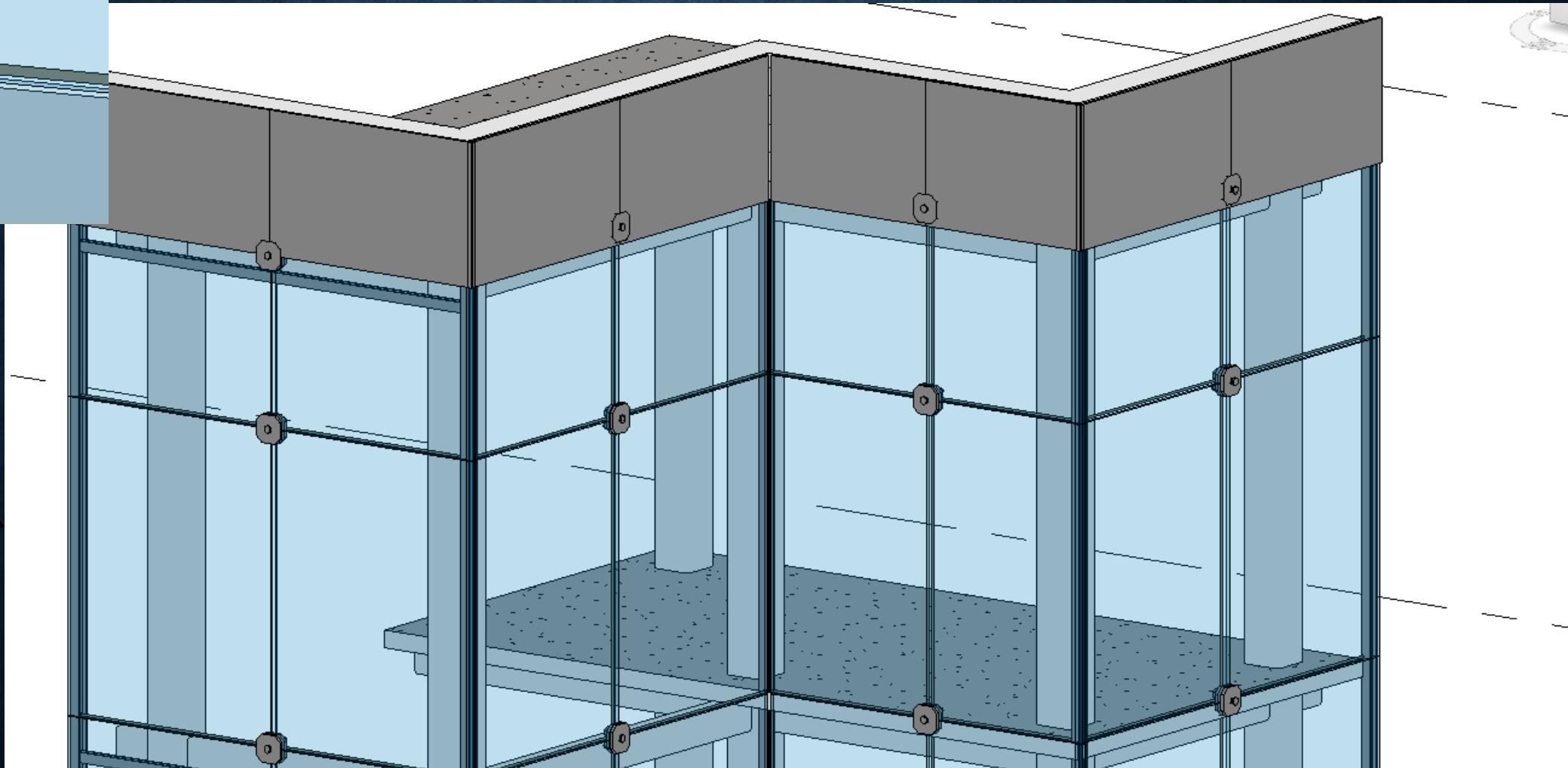
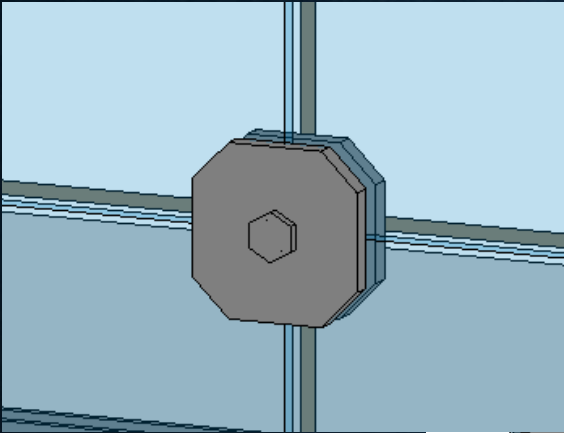
CABLE AND PLATES



FASTENERS AND BOLT



FASTENERS AND BOLT



INTERIOR VIEW

