



WAUSAU

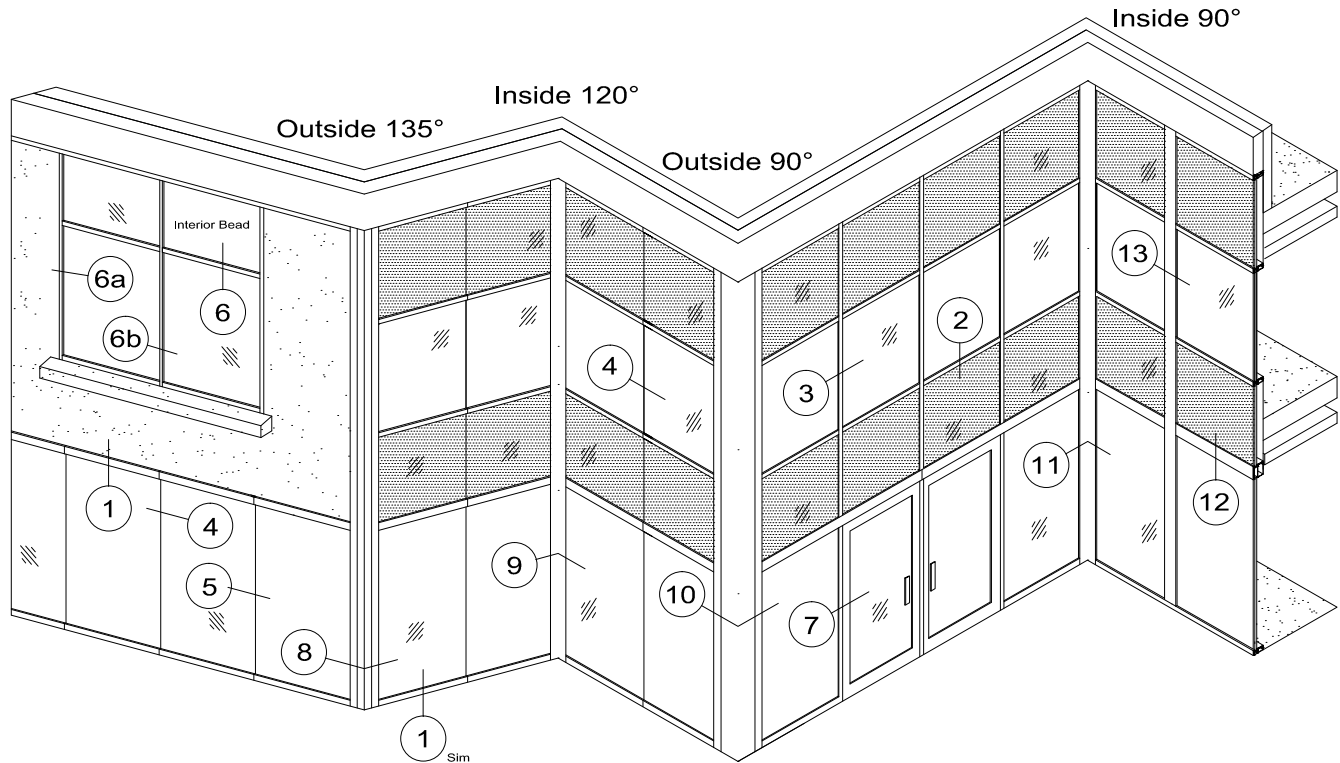
WINDOW AND WALL
SYSTEMS

Elevation

Curtainwall

2 1/2" SUPERWALL™ Series

Elevation Viewed From The Exterior



Section Contents

Page(s)

2 1/2" Face Details	C2-02 thru C2-05
SuperWall Corners	C2-06 thru C2-09
Trim Covers	C2-10 thru C2-13
Door Frame Inserts	C2-14
Glazing Options	C2-15
Mullion Splices	C2-16
Steel Cladding	C2-17 thru C2-18
Projected Vent Inserts	C2-19
Isometric Views	C2-20 thru C2-24

SuperWall

Contact A Wausau Representative For Other Possible Configurations.



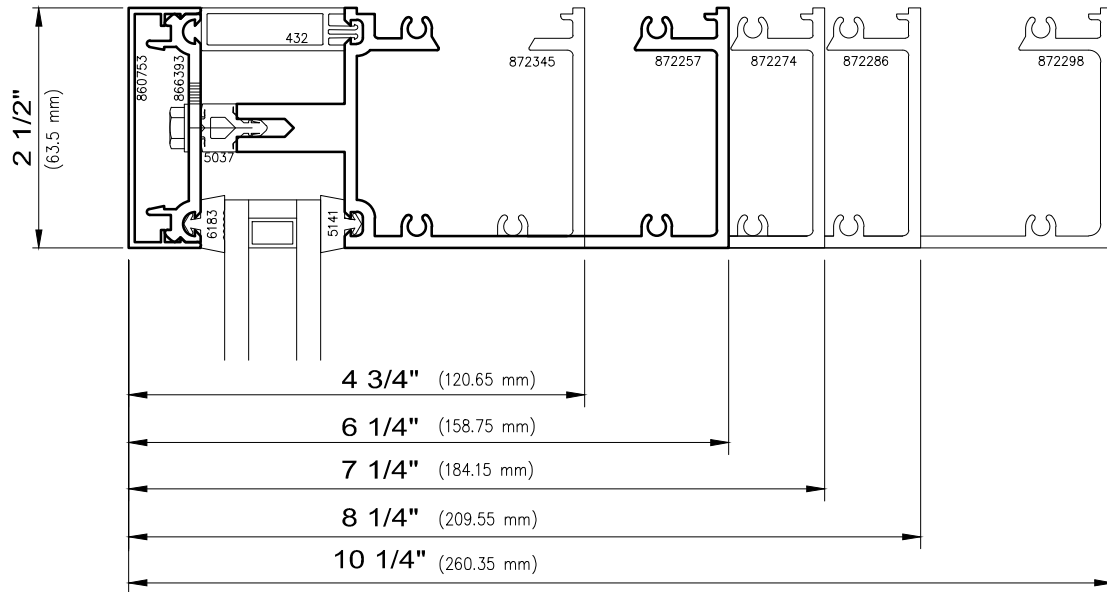
WAUSAU

WINDOW AND WALL
SYSTEMS

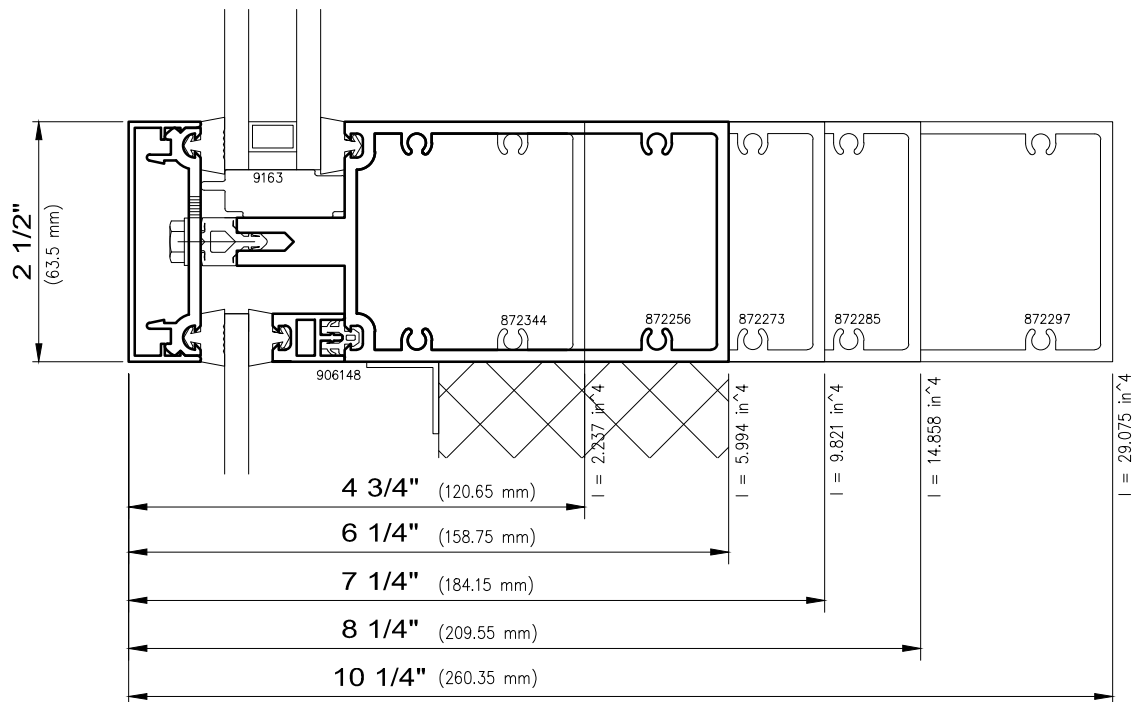
4750/ 6250/ 7250/ 8250/ 10250 SW

Curtainwall

2 1/2" SUPERWALL™ Series



1 Perimeter Frame



2 Vision/Spandrel Intermediate



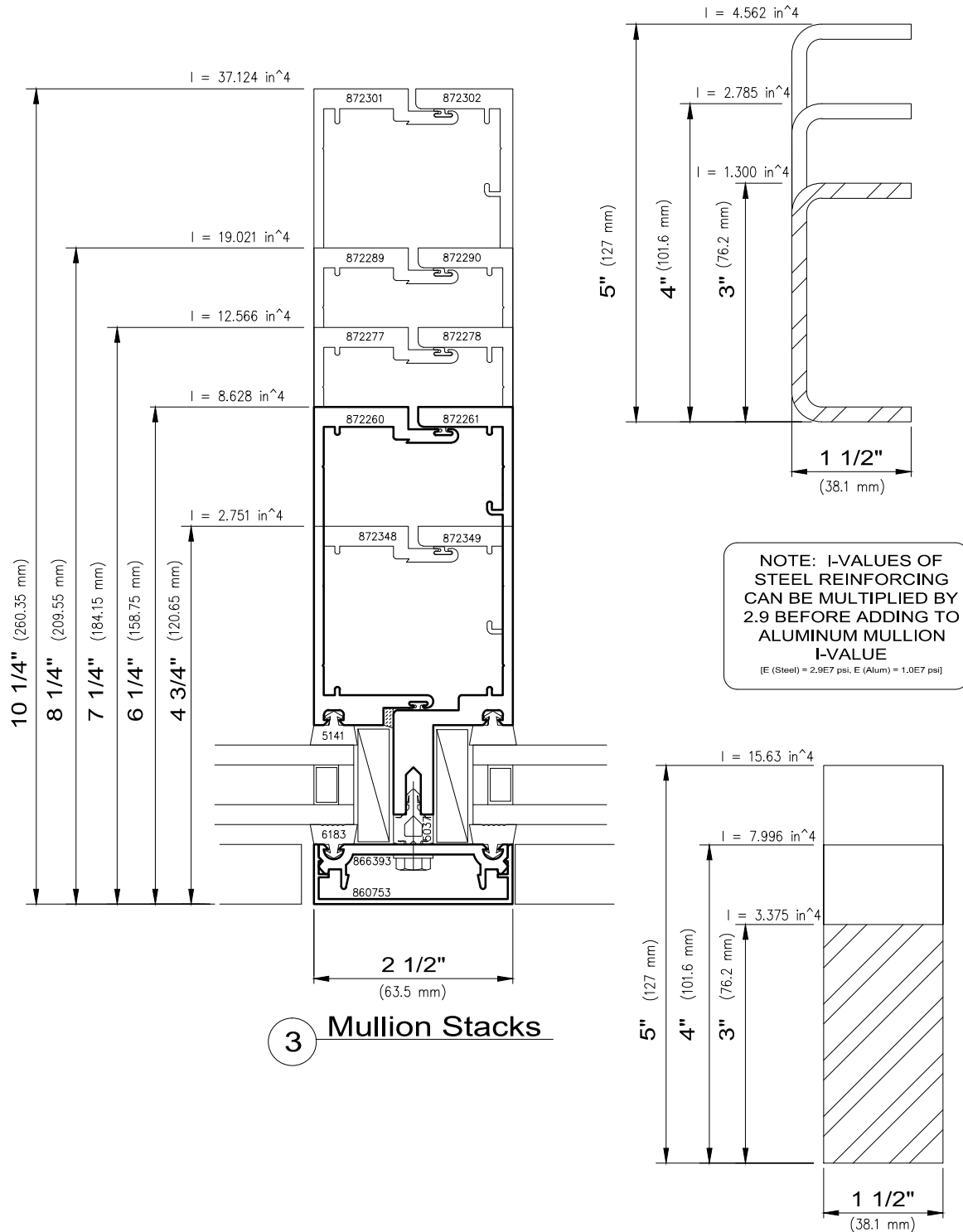
WAUSAU

WINDOW AND WALL
SYSTEMS

4750/ 6250/ 7250/ 8250/ 10250 SW

Curtainwall

2 1/2" SUPERWALL™ Series





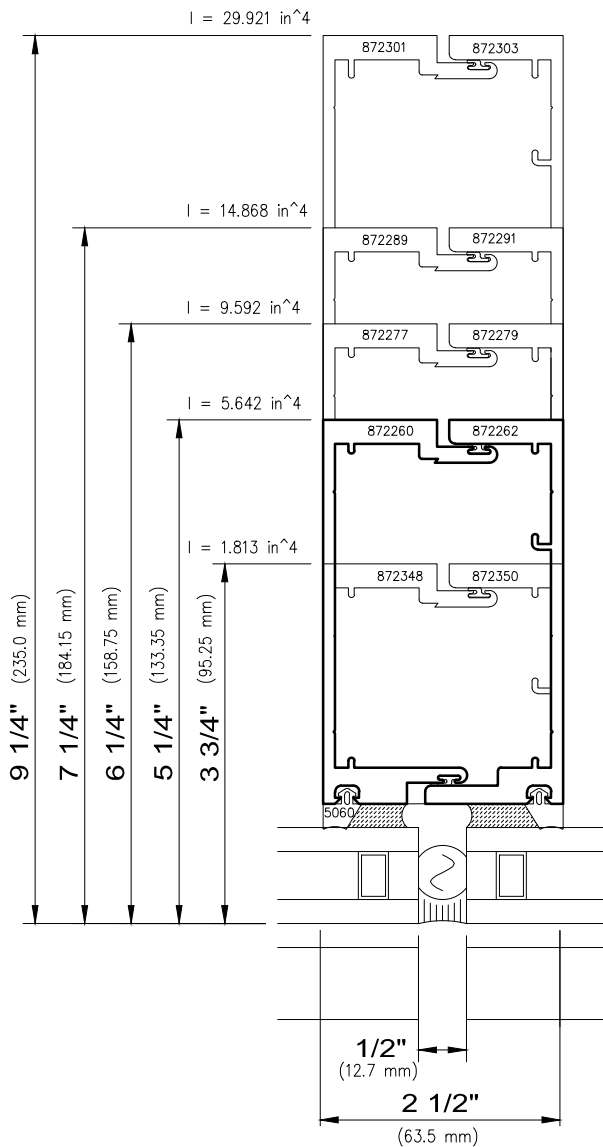
WAUSAU

WINDOW AND WALL
SYSTEMS

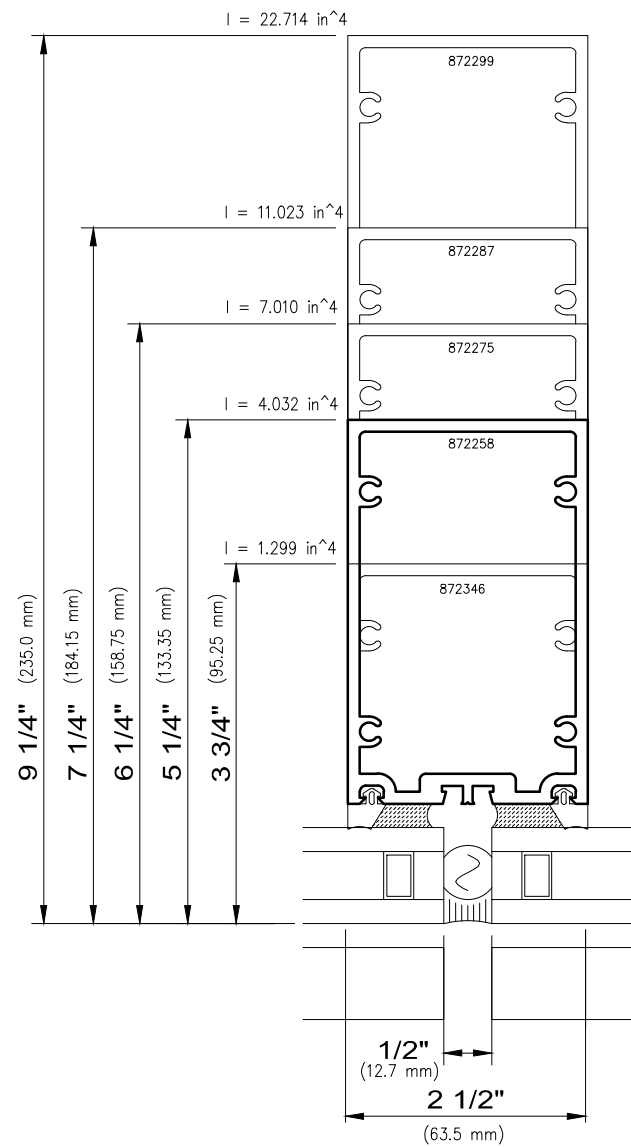
4750/ 6250/ 7250/ 8250/ 10250 SW

Curtainwall

2 1/2" SUPERWALL™ Series



4 Structural Glazed Mullion Stacks



5 Tube Mullions



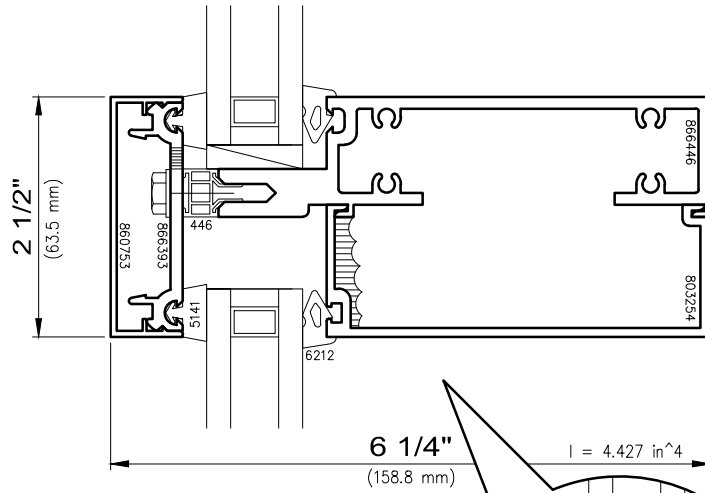
WAUSAU

WINDOW AND WALL
SYSTEMS

Posts and Stacks

Curtainwall

2 1/2" SUPERWALL™ Series



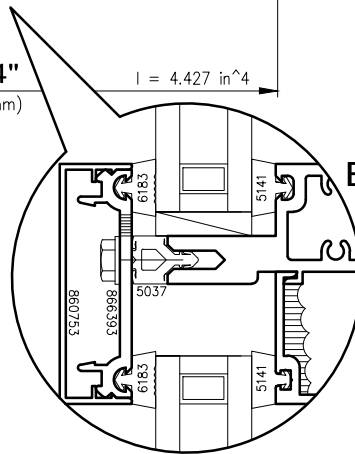
NOTE:

Superwall with removable interior beads can be initially glazed either entirely from the interior, or entirely from the exterior as shown, but a combination of both is not recommended, except as necessary for reglazing.

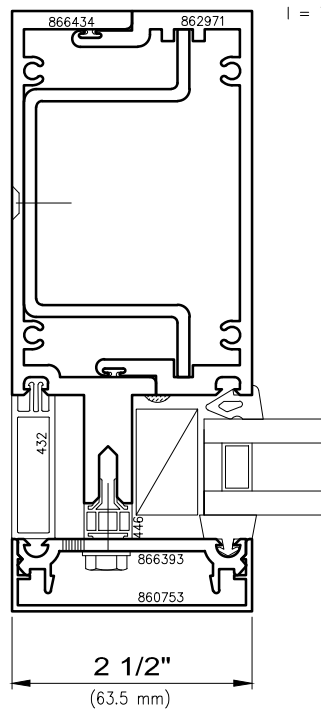
Special anchor details may be required for inside glazing of spandrels at anchorage conditions. Insulating spandrel glass is recommended.

It is especially critical to ensure 100% tooled seals at interior glazing gasket races and zone dams above removable interior beads, as well as bead-to-frame joints. Refer to Wausau installation instructions for more information.

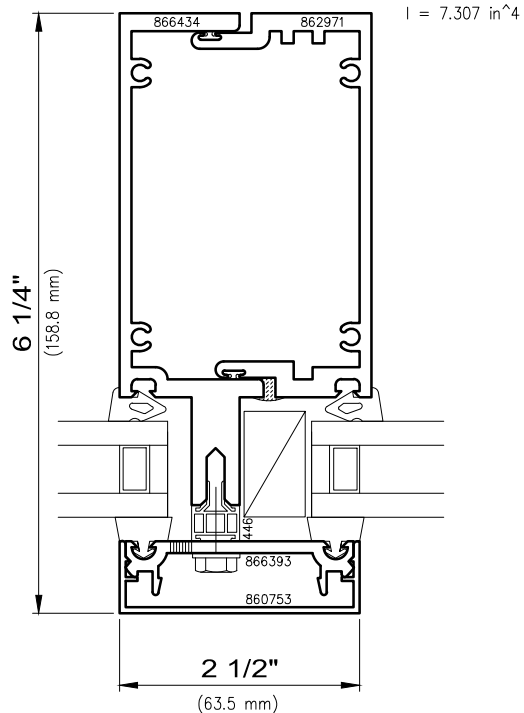
6 Intermediate
Interior Glazed



Exterior
Glazed



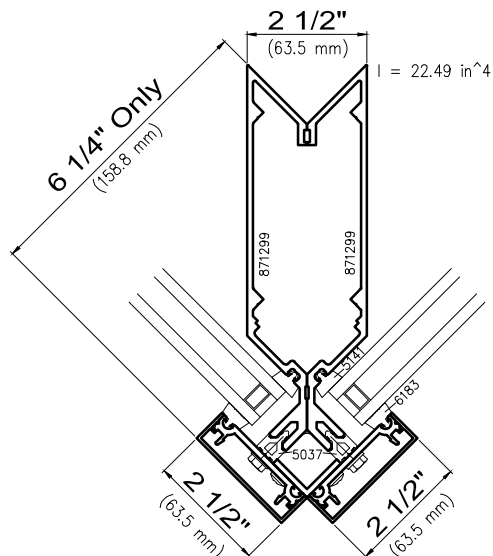
6a Perimeter Frame
with Offset Stem



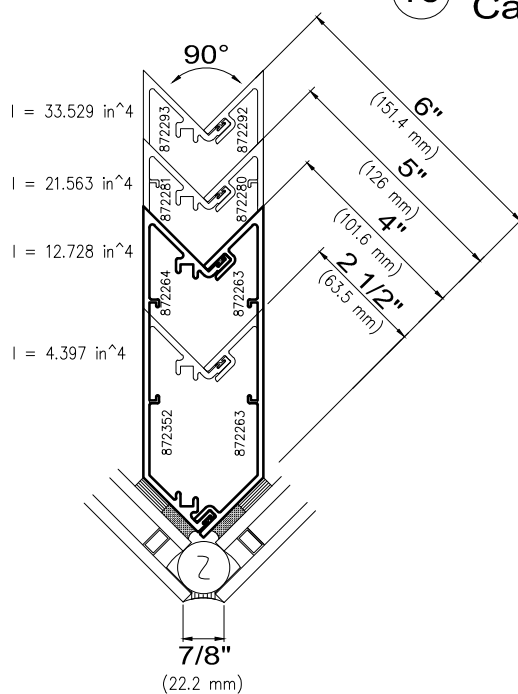
6b Mullion Stacks
with Offset Stem

Curtainwall

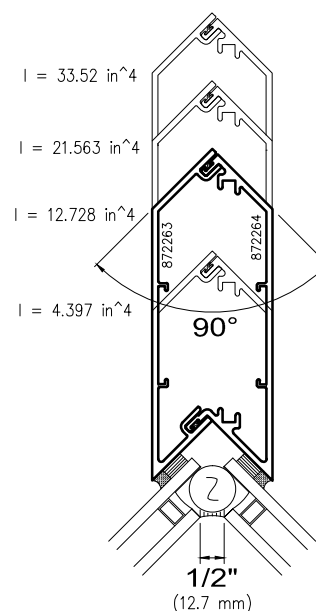
2 1/2" SUPERWALL™ Series



10 Outside 90° Corner Captured Glazing



10 Outside 90° Corner
Structural Glazed



11 Inside 90° Corner
Structural Glazed



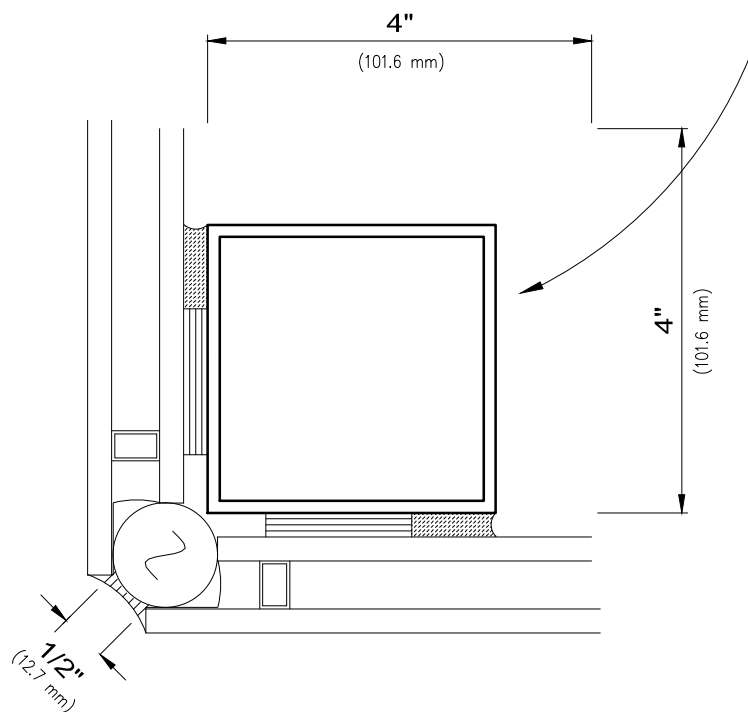
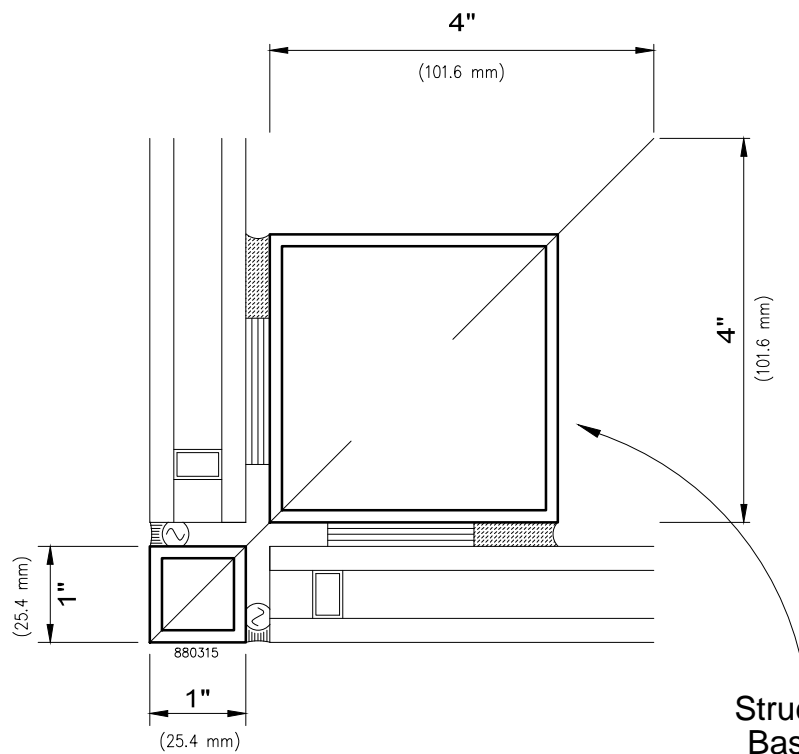
WAUSAU

WINDOW AND WALL
SYSTEMS

Structural Glazed Corners

Curtainwall

2 1/2" SUPERWALL™ Series



Outside 90° Corner
Structural Glazed



WAUSAU

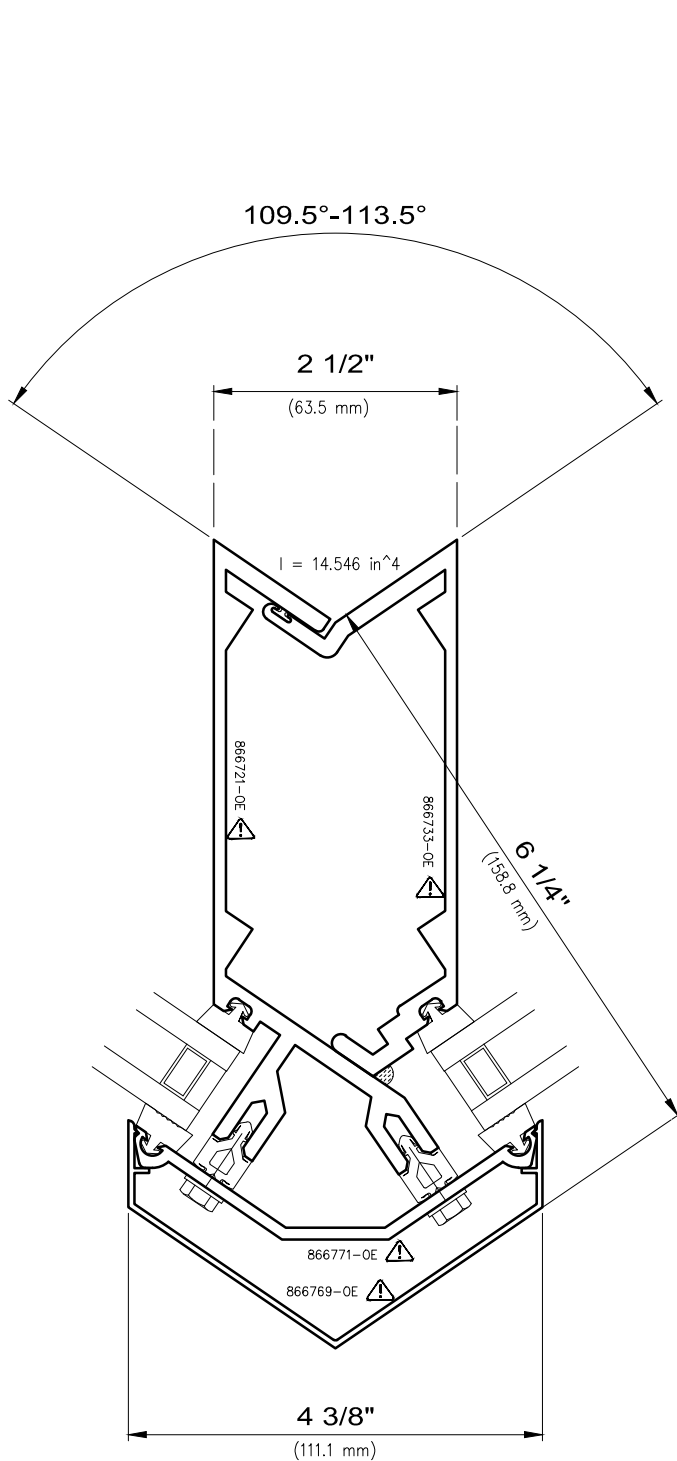
WINDOW AND WALL
SYSTEMS

Splayed Mullions

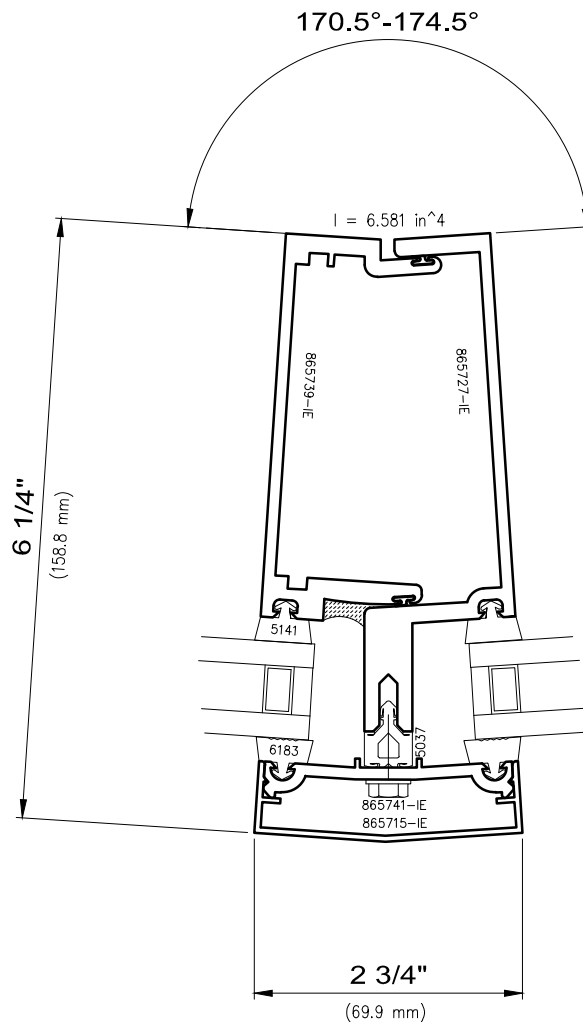
Curtainwall

2 1/2" SUPERWALL™ Series

Non-stocked items shown – Minimum order quantity may apply



111.5° Splayed Mullion



172.5° Splayed Mullion

⚠ - OBSOLETE TOOLING STATUS

SCALE: 6" = 1'-0"

C2-8

© 2015 Apogee Wausau Group, Inc.



WAUSAU

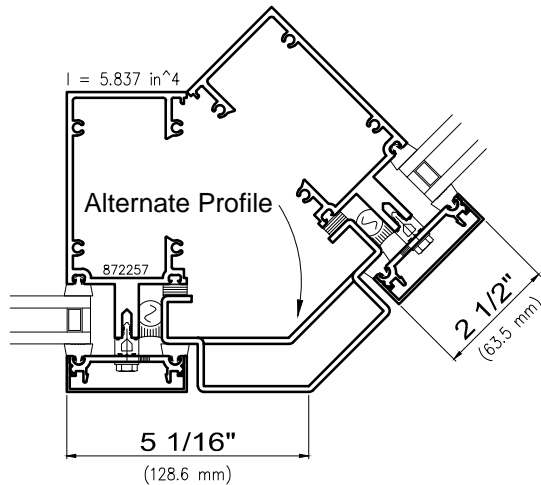
WINDOW AND WALL
SYSTEMS

Corners

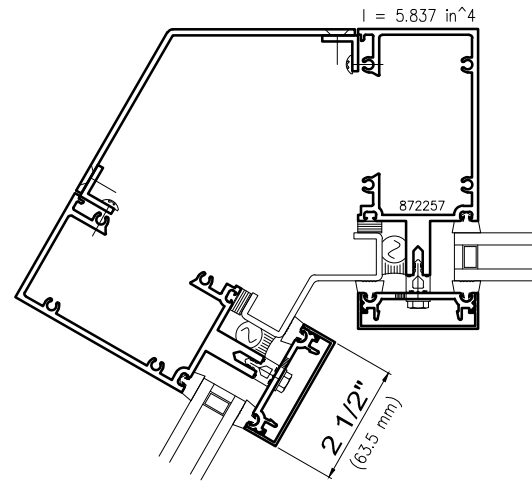
Curtainwall

2 1/2" SUPERWALL™ Series

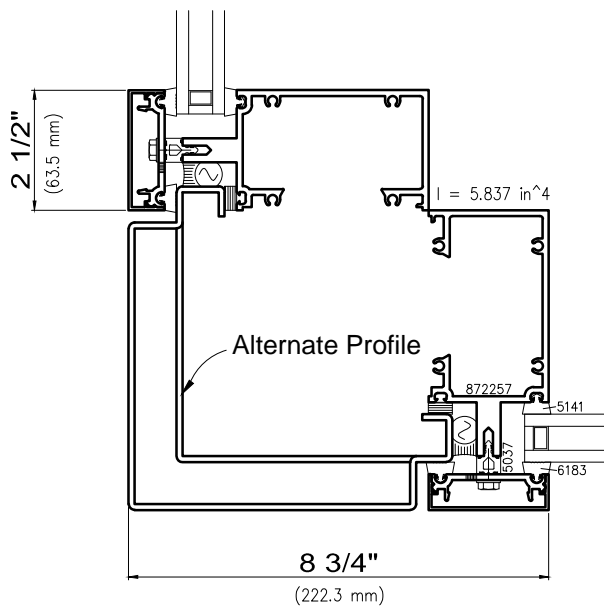
(6250SW Series Illustrated)



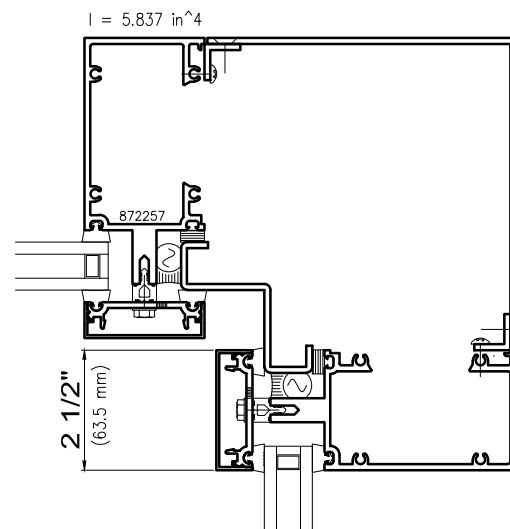
8 Outside 135° Corner Mullion
0.125" Formed Aluminum



9 Inside 120° Corner Mullion
0.125" Formed Aluminum



Outside 90° Corner Mullion
0.125" Formed Aluminum



Inside 90° Corner Mullion
0.125" Formed Aluminum



WAUSAU

WINDOW AND WALL
SYSTEMS

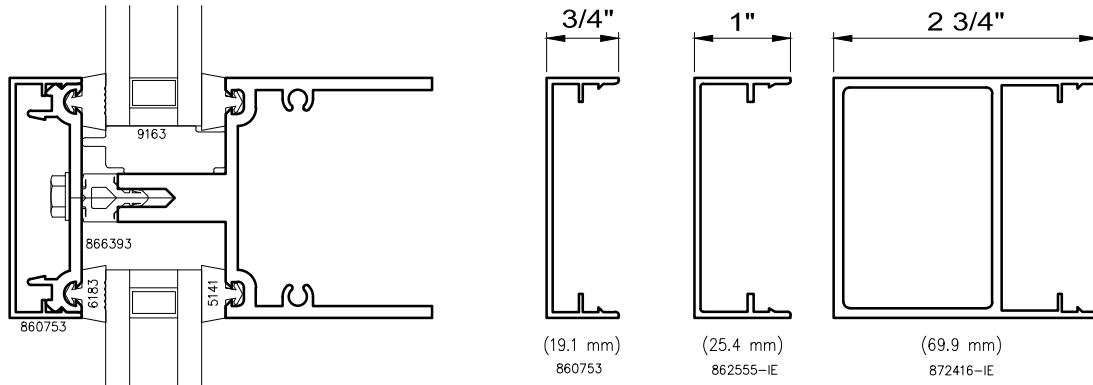
Trim Covers

Curtainwall

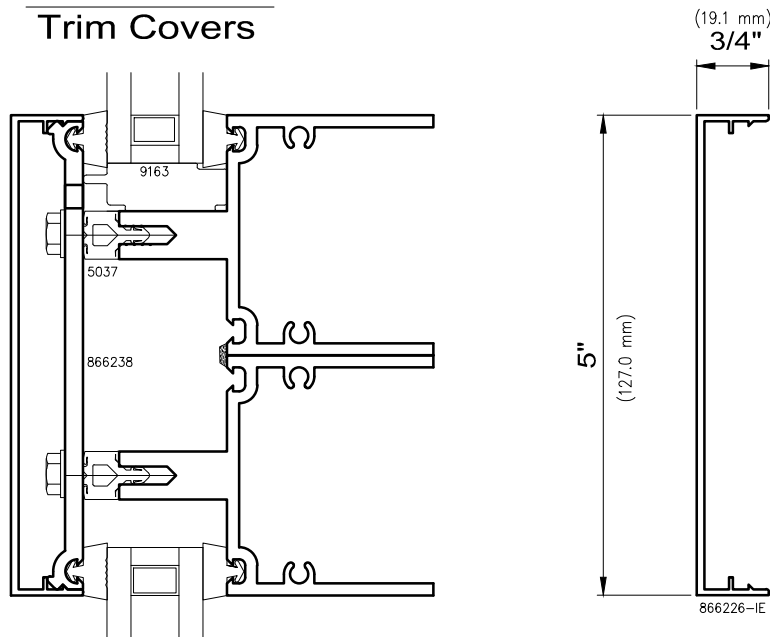
2 1/2" SUPERWALL™ Series

Non-stocked items shown – Minimum order quantity may apply

2 1/2" Exterior Trim Covers



5" Exterior Trim Covers





WAUSAU

WINDOW AND WALL
SYSTEMS

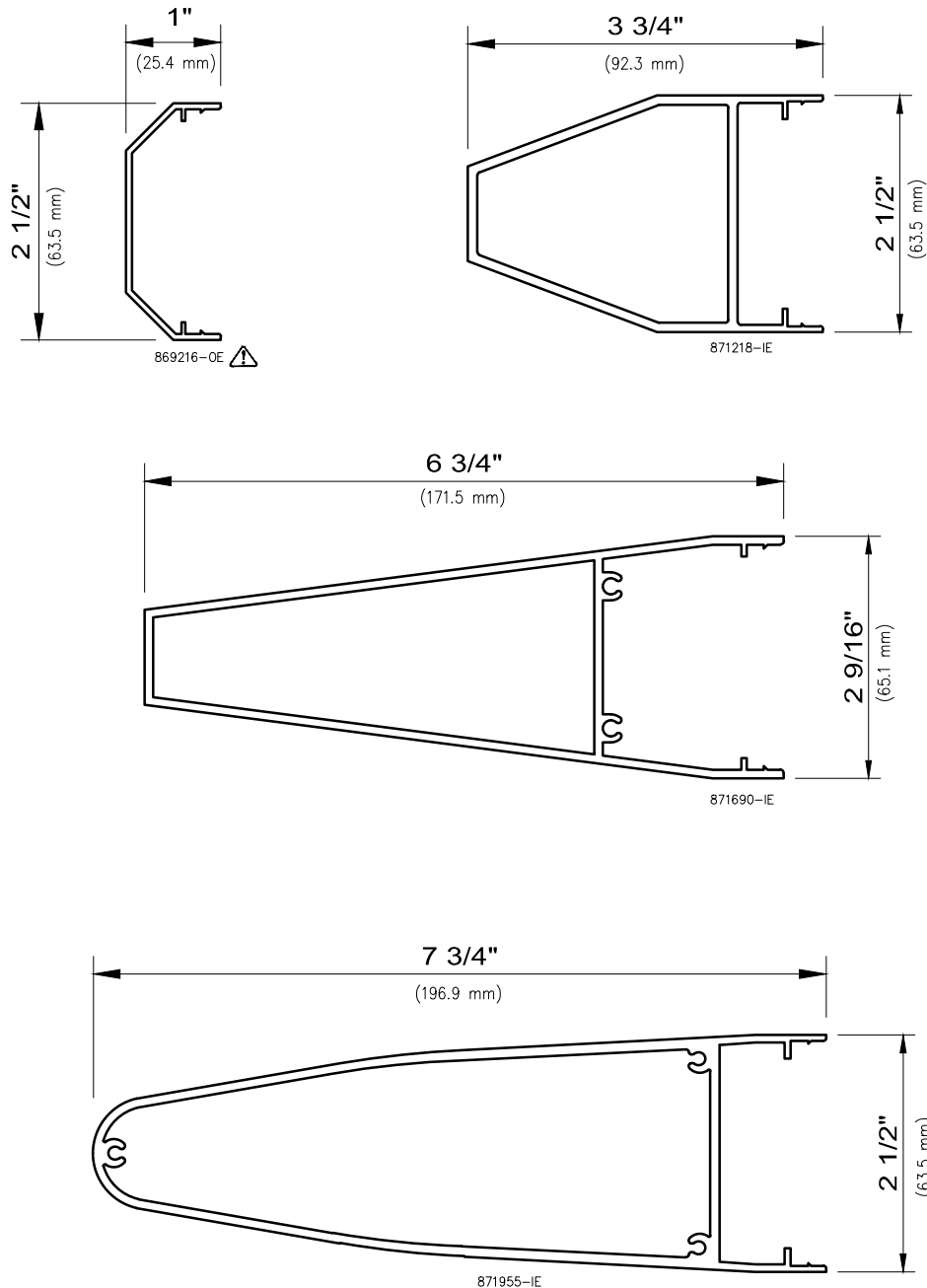
Trim Covers

Curtainwall

2 1/2" SUPERWALL™ Series

Non-stocked items shown – Minimum order quantity may apply

2 1/2" Accent Trim Covers



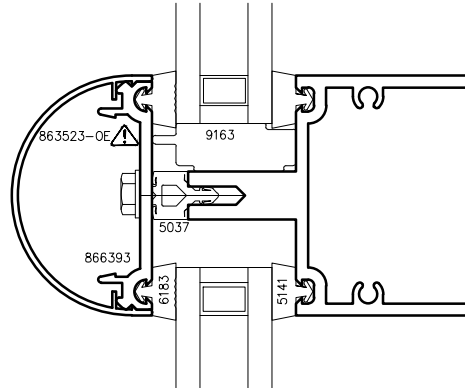
⚠ – OBSOLETE TOOLING STATUS

Non-standard deep exterior snap-on covers (those extending more than 2" from the face of glass) may need to be secured by methods other than snap fits. It is the responsibility of the installer to verify applied loads from maintenance equipment, staging, scaffolding or other exterior access devices, regardless of whether such requirements are included in contract documents, and add mechanical attachment provisions as necessary. Wausau's structural engineering department is available to assist in analysis of loading. Dynamic wind loads, as well as the potential for build-up of ice or snow, should also be considered.

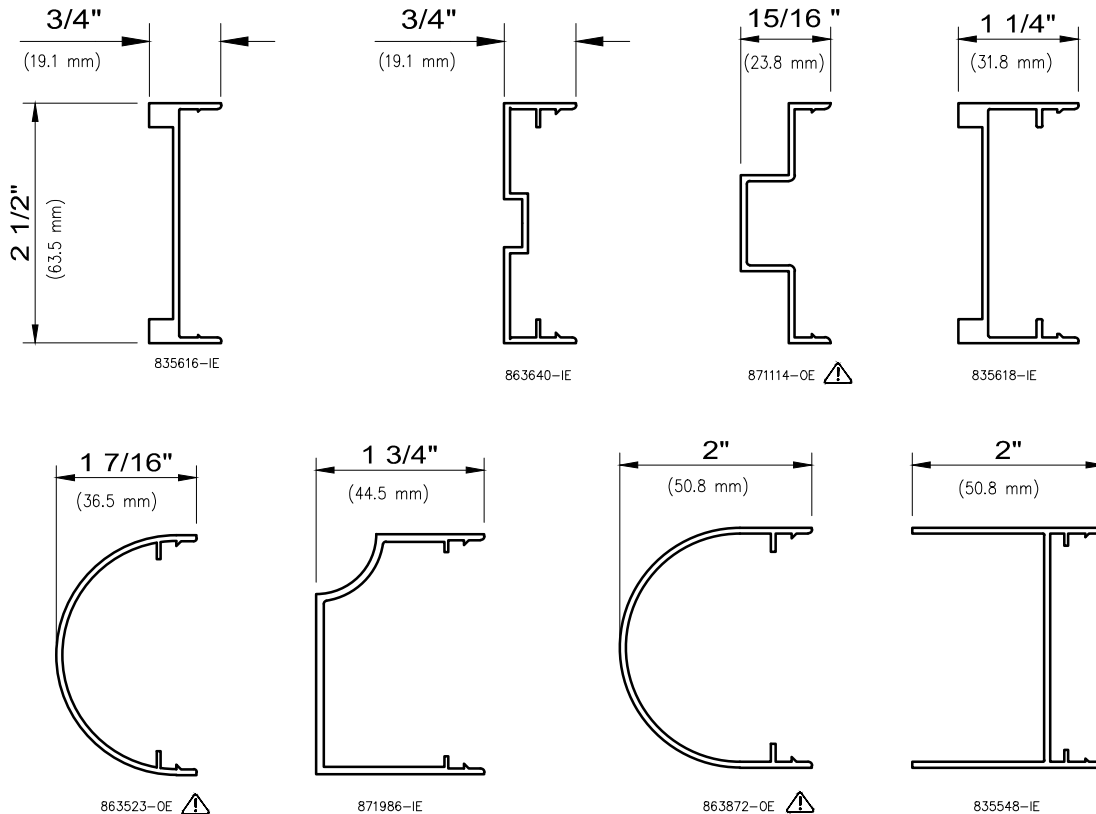
Curtainwall

2 1/2" SUPERWALL™ Series

Non-stocked items shown – Minimum order quantity may apply



2 1/2" Accent
Trim Covers



⚠ - OBSOLETE TOOLING STATUS

Non-standard deep exterior snap-on covers (those extending more than 2" from the face of glass) may need to be secured by methods other than snap fits. It is the responsibility of the installer to verify applied loads from maintenance equipment, staging, scaffolding or other exterior access devices, regardless of whether such requirements are included in contract documents, and add mechanical attachment provisions as necessary. Wausau's structural engineering department is available to assist in analysis of loading. Dynamic wind loads, as well as the potential for build-up of ice or snow, should also be considered.



WAUSAU

WINDOW AND WALL
SYSTEMS

Accessories

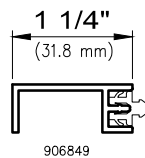
Curtainwall

2 1/2" SUPERWALL™ Series

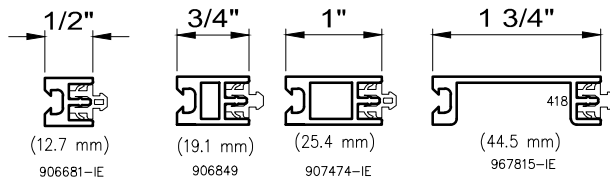
Non-stocked items shown – Minimum order quantity may apply

Miscellaneous Accessories

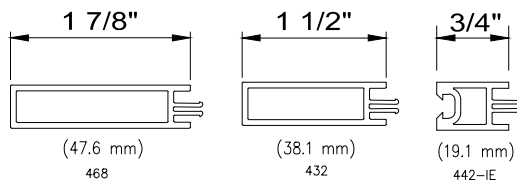
Aluminum Pocket Filler



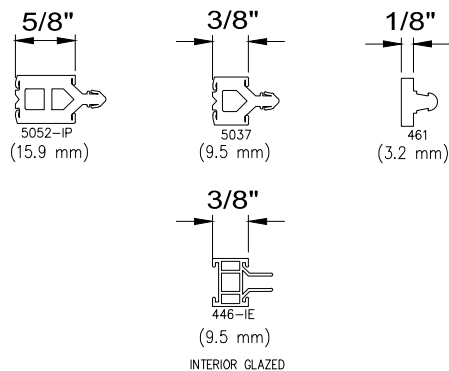
Aluminum Glazing Inserts



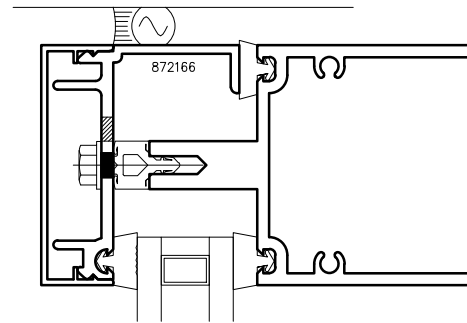
PVC Pocket Filler



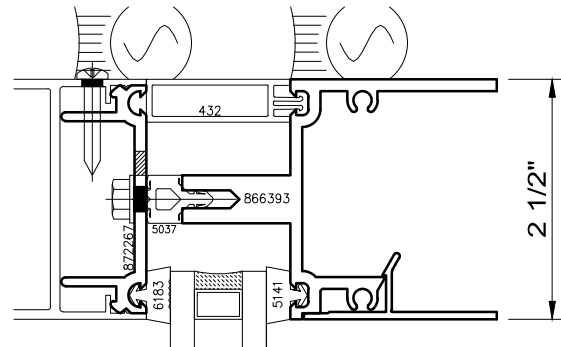
Thermal Separator



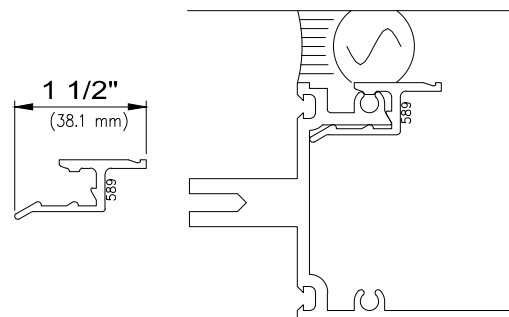
Angled Pressure Plate



Pressure Plate with Fastener Legs



PVC Caulk Backer





WAUSAU

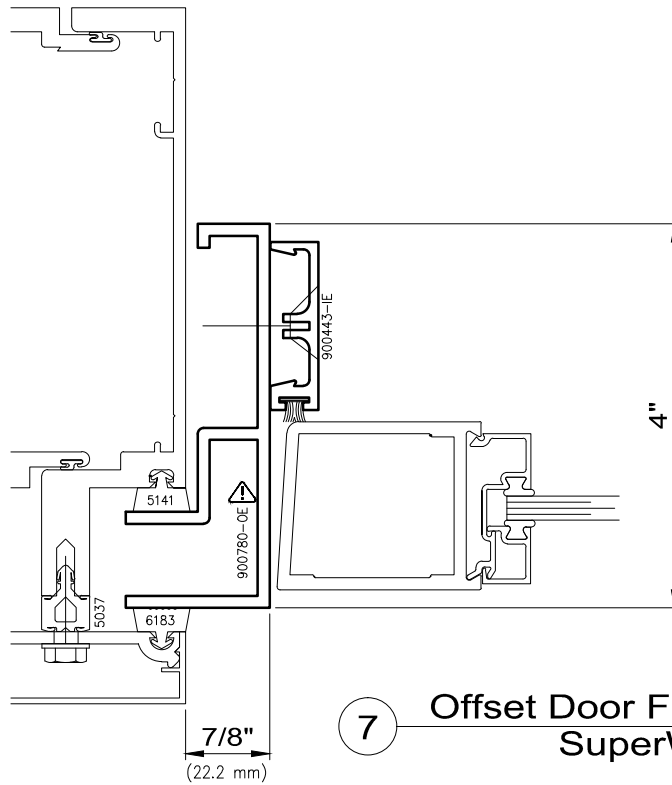
WINDOW AND WALL
SYSTEMS

Door Frame Inserts

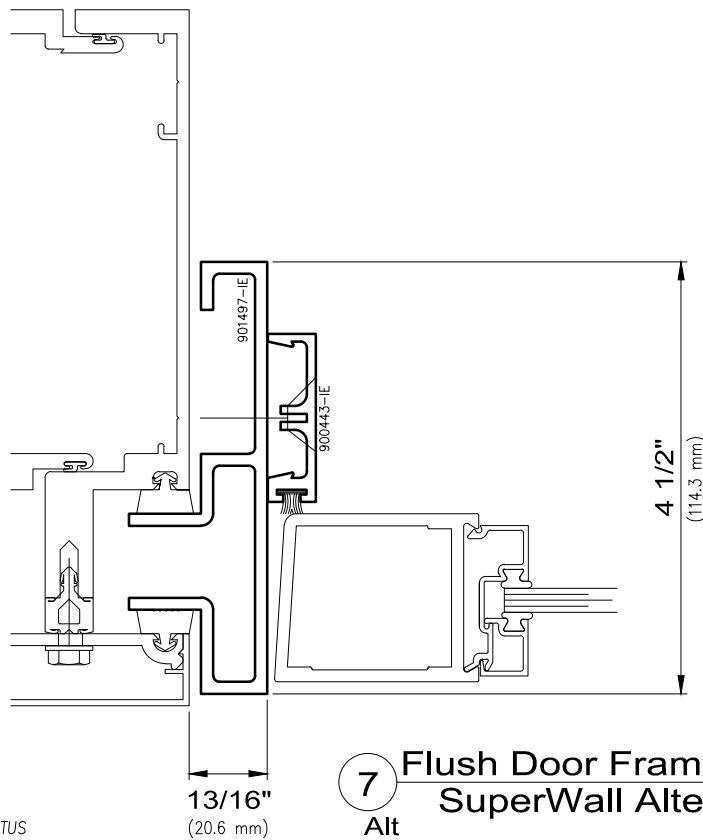
Curtainwall

SUPERWALL™ Series

Non-stocked items shown – Minimum order quantity may apply



7 Offset Door Frame Insert
SuperWall



7 Alt Flush Door Frame Insert
SuperWall Alternate

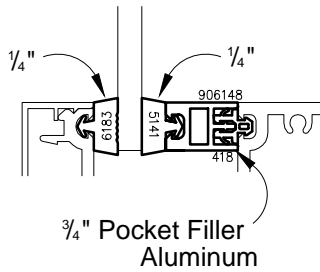
△ - OBSOLETE TOOLING STATUS

Curtainwall

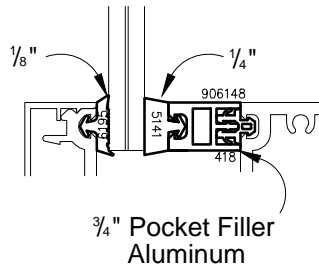
2 1/2" SUPERWALL™ Series

Non-stocked items shown – Minimum order quantity may apply

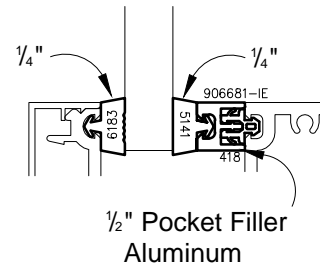
1/4" Glass



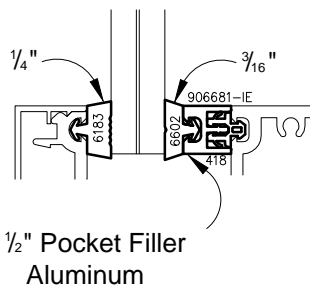
3/8" Glass



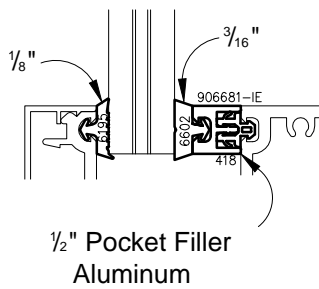
1/2" Glass



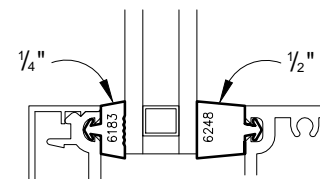
9/16" Glass



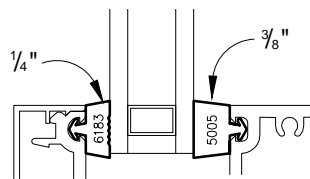
1 1/16" Glass



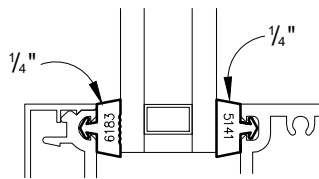
3/4" Glass



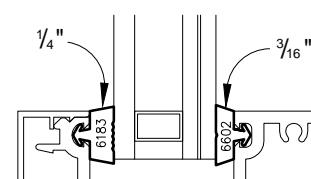
7/8" Glass



1" Glass

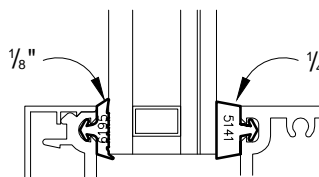


1 1/16" Glass



Glass Size Limitations Apply

1 1/8" Glass



Contact A Wausau Representative For Other Possible Glazing Options.



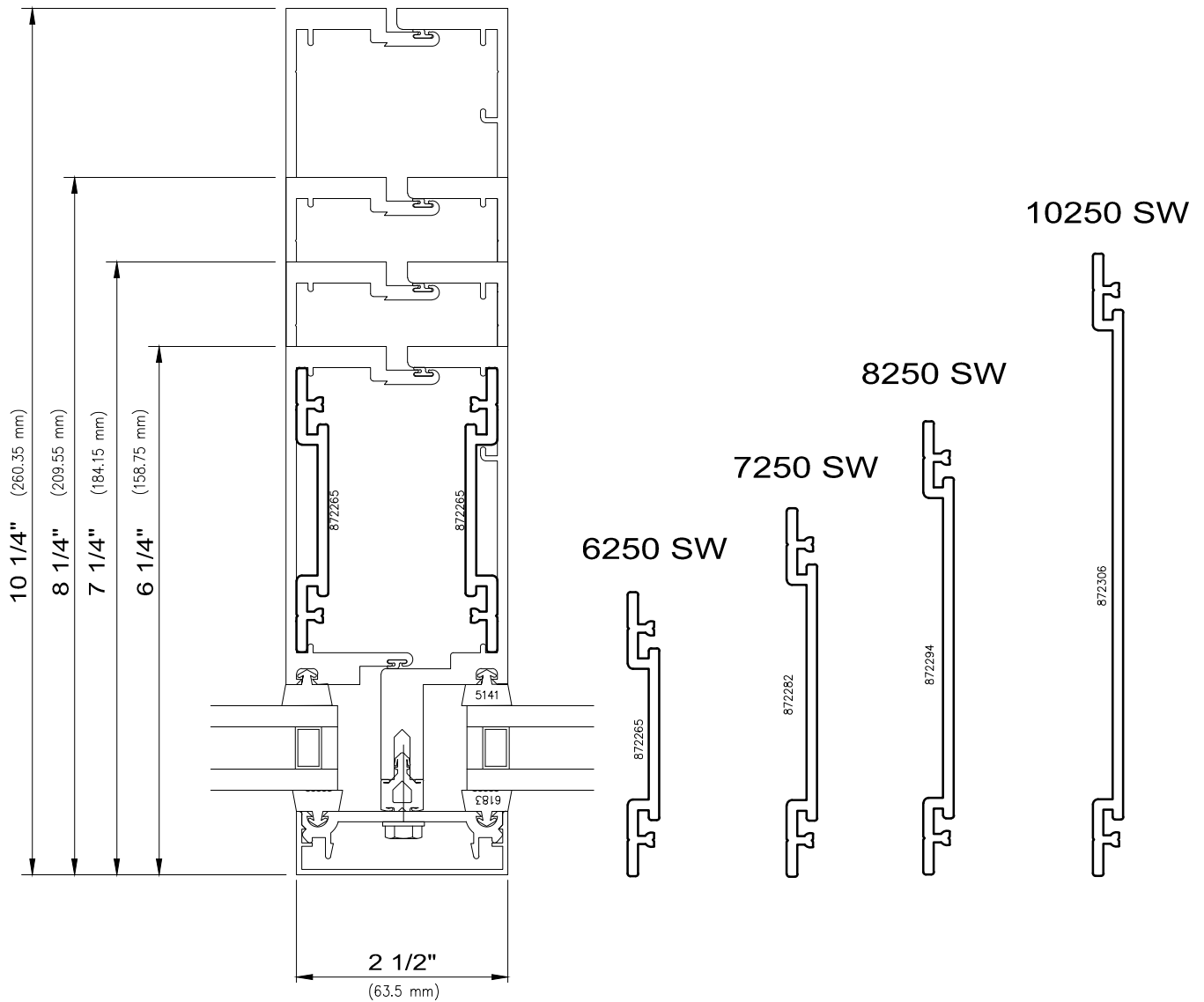
WAUSAU

WINDOW AND WALL
SYSTEMS

6250/ 7250/ 8250/ 10250 Mullion Splices

Curtainwall

2 1/2" SUPERWALL™ Series



SuperWall Mullion Splice



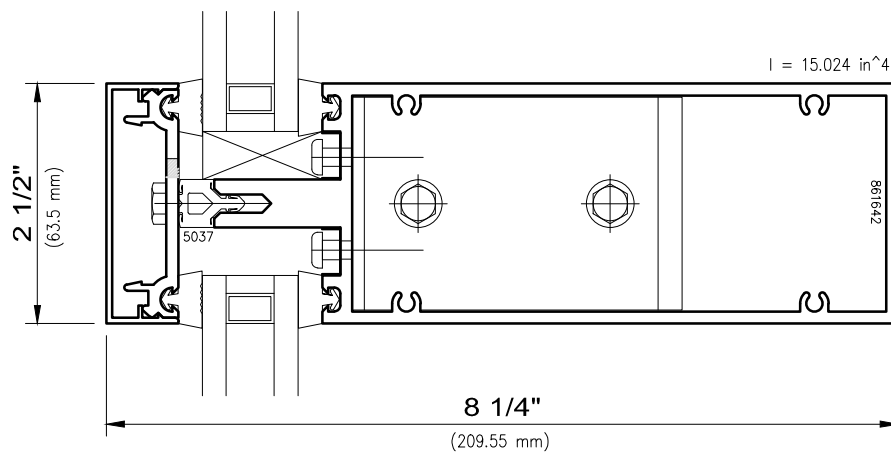
WAUSAU

WINDOW AND WALL
SYSTEMS

Horizontal

Curtainwall

STEEL CLADDING Series



I_{yy}—Values are for Glass Load



WAUSAU

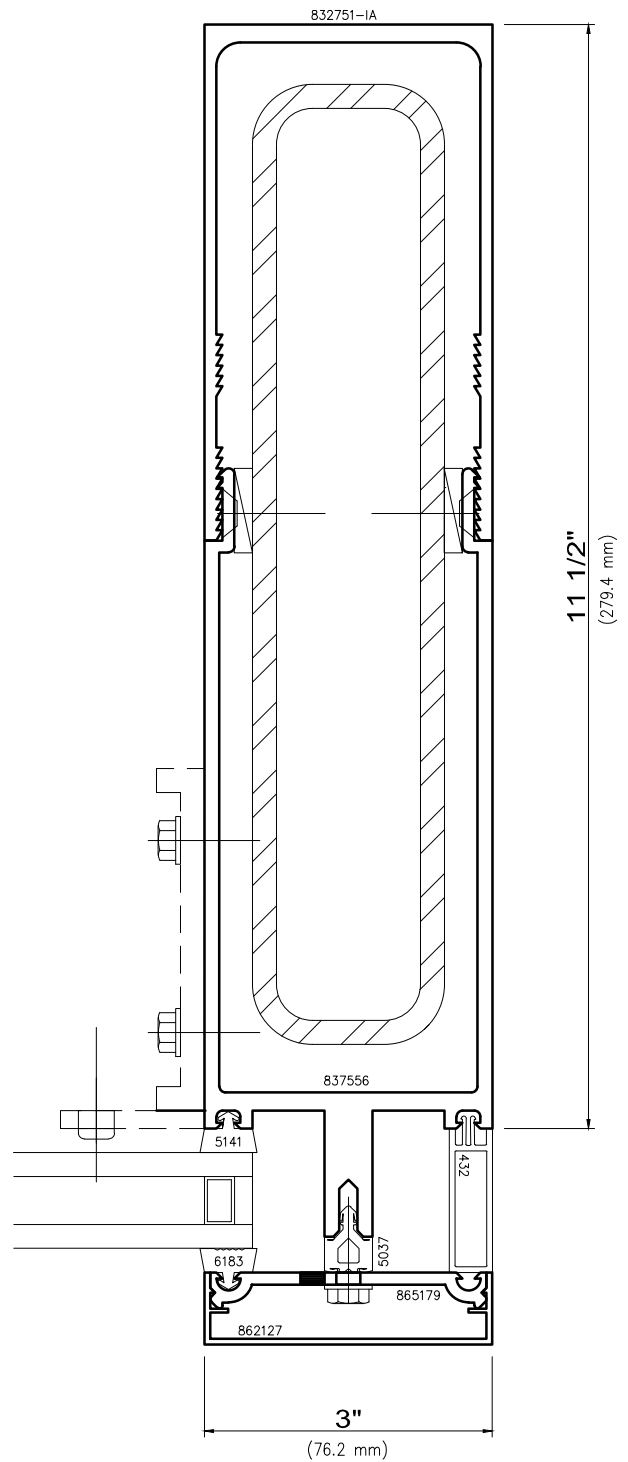
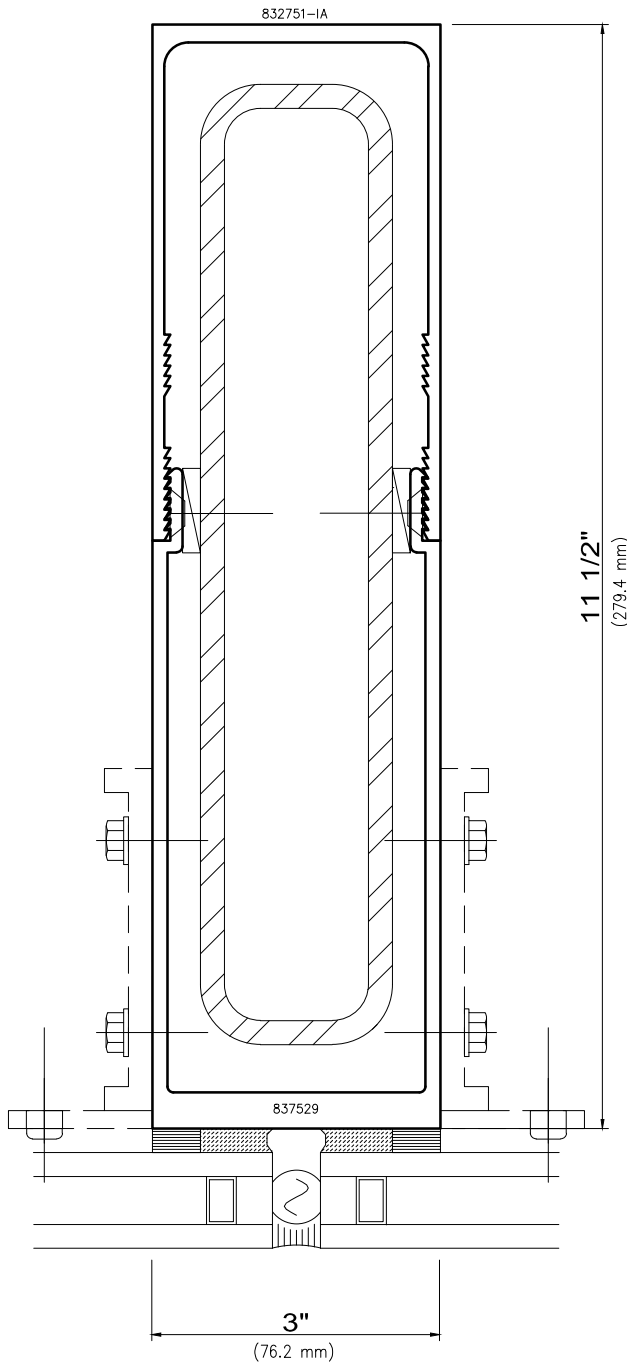
WINDOW AND WALL
SYSTEMS

Verticals

Curtainwall

STEEL CLADDING Series

Non-stocked items shown – Minimum order quantity may apply





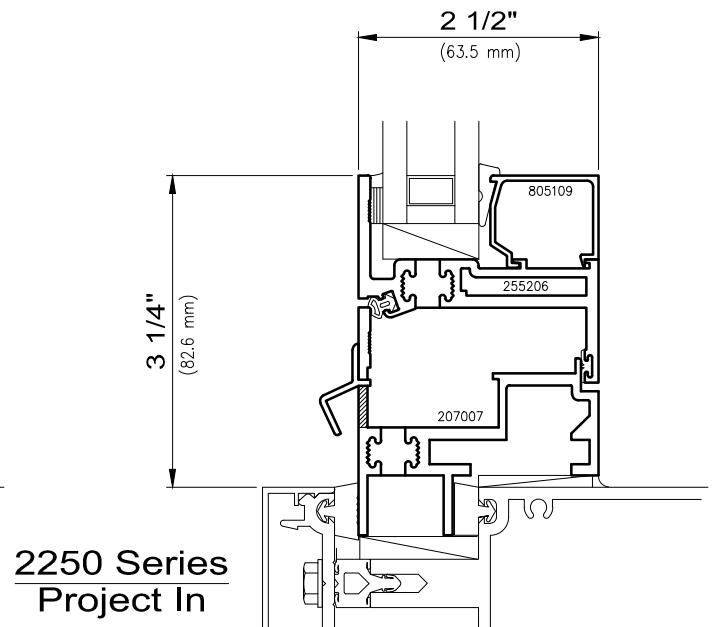
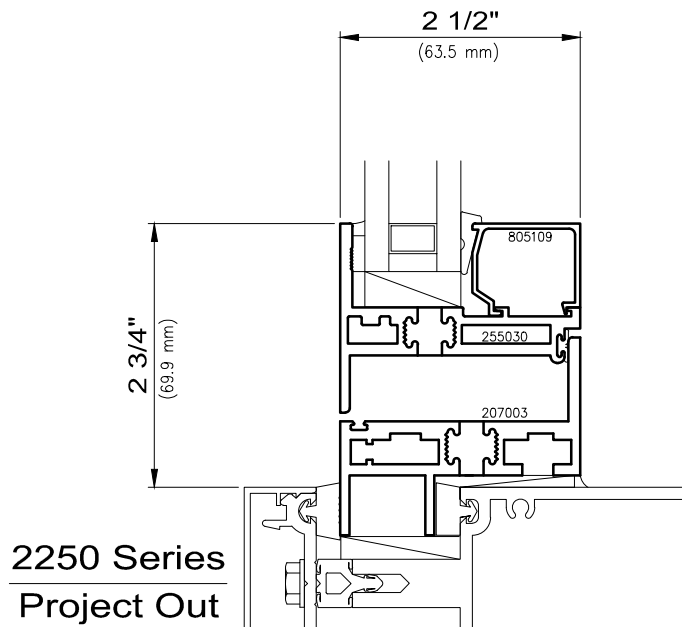
WAUSAU

WINDOW AND WALL
SYSTEMS

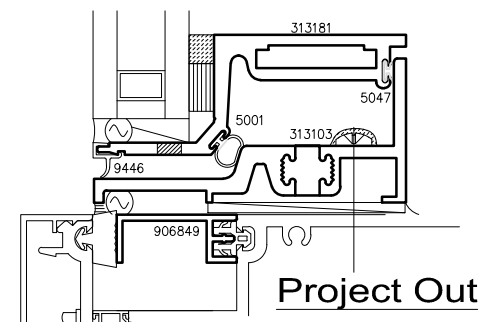
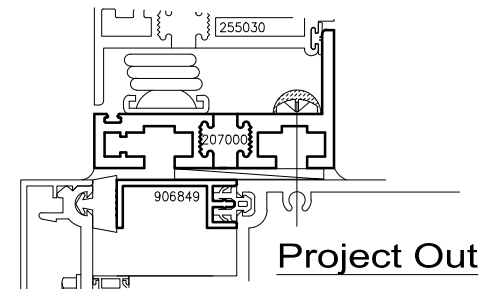
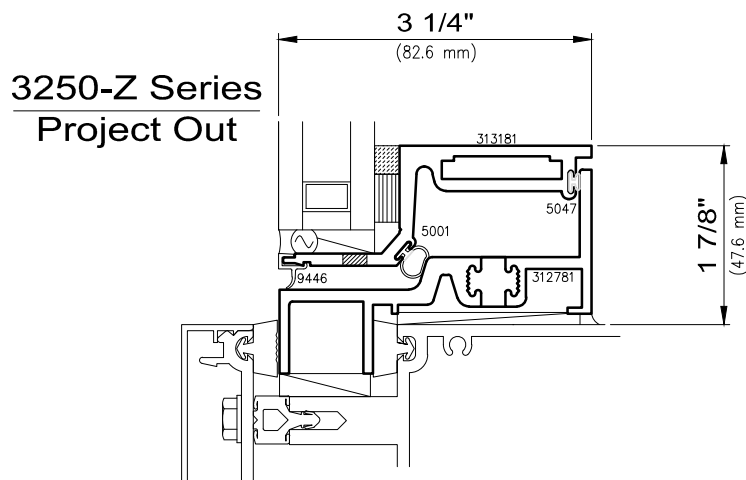
Projected Vent Inserts

Curtainwall

SUPERWALL™ Series



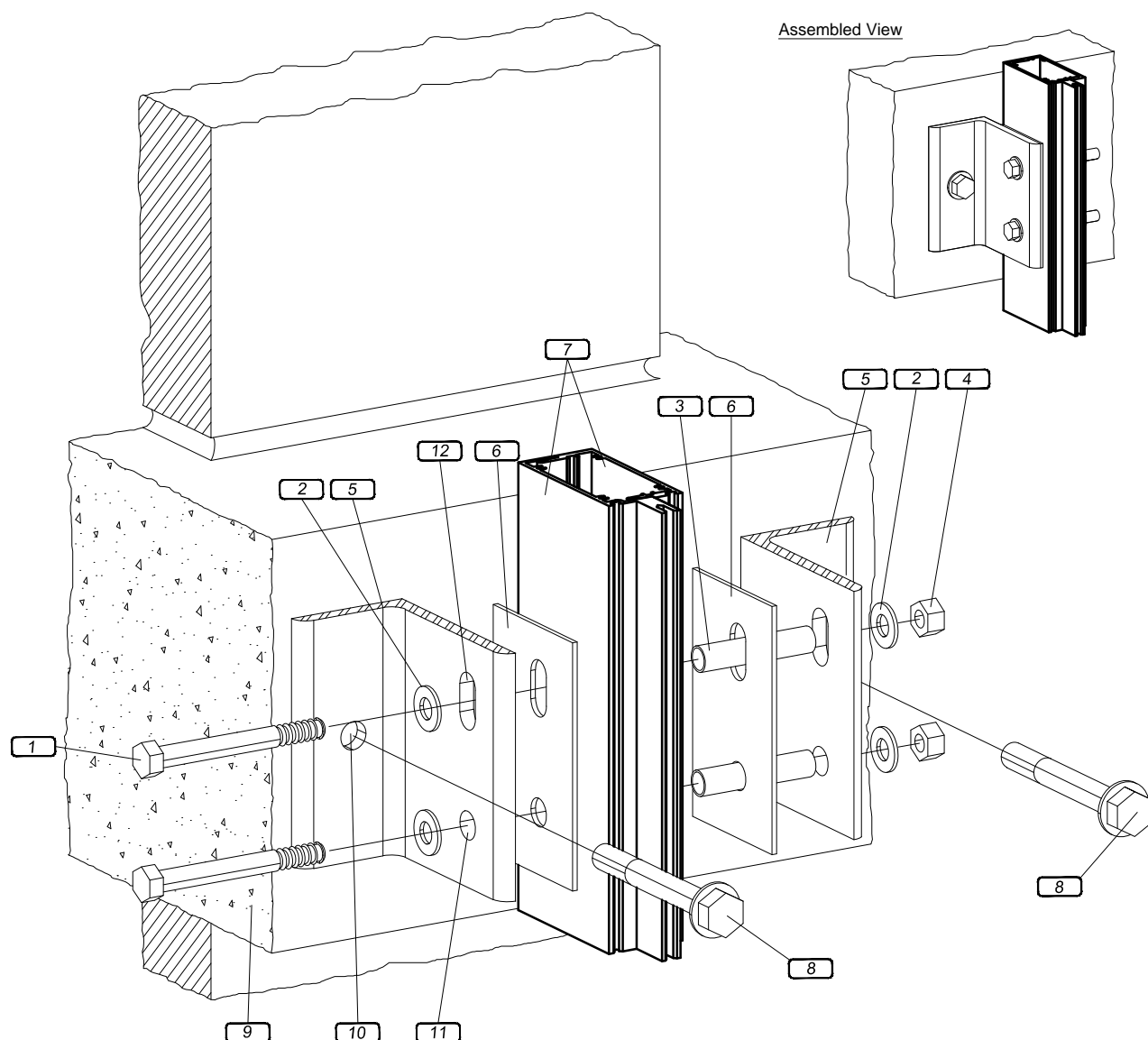
"Flat Back" Options



For Other Available Inserts, Reference Zero Sightline Section.

Curtainwall

SUPERWALL™ Series



Typical Connection

- 1 Bolt *
- 2 Washer
- 3 Pipe Spacer
- 4 Nut

Typical Holes

- 10 Anchorage Hole, (Wausau supplies all holes in steel. Erector to match drill aluminum.)
- 11 Steel To Receive Slots At Live Load
- 12 Steel To Receive Clear Holes At Dead Load

- | | |
|----------|---|
| 5 | Steel Angles * |
| 6 | 1/8" PVC Plates, Size equals the bearing surface of the anchor. |
| 7 | Heavy Extruded Aluminum Frame Members |
| 8 | Expansion Anchor * |
| 9 | Concrete Floor Slab Typ. |

* Note:
Steel angle, expansion anchor, and thru bolts vary due
to wind loads, slab location, and floor height.

Wausau is providing only those components of perimeter fire and/or smoke containment systems that are identified on these drawings as, "by Wausau."

Wausau takes no responsibility for other materials or conditions, or for obtaining necessary engineering judgements and/or approvals.



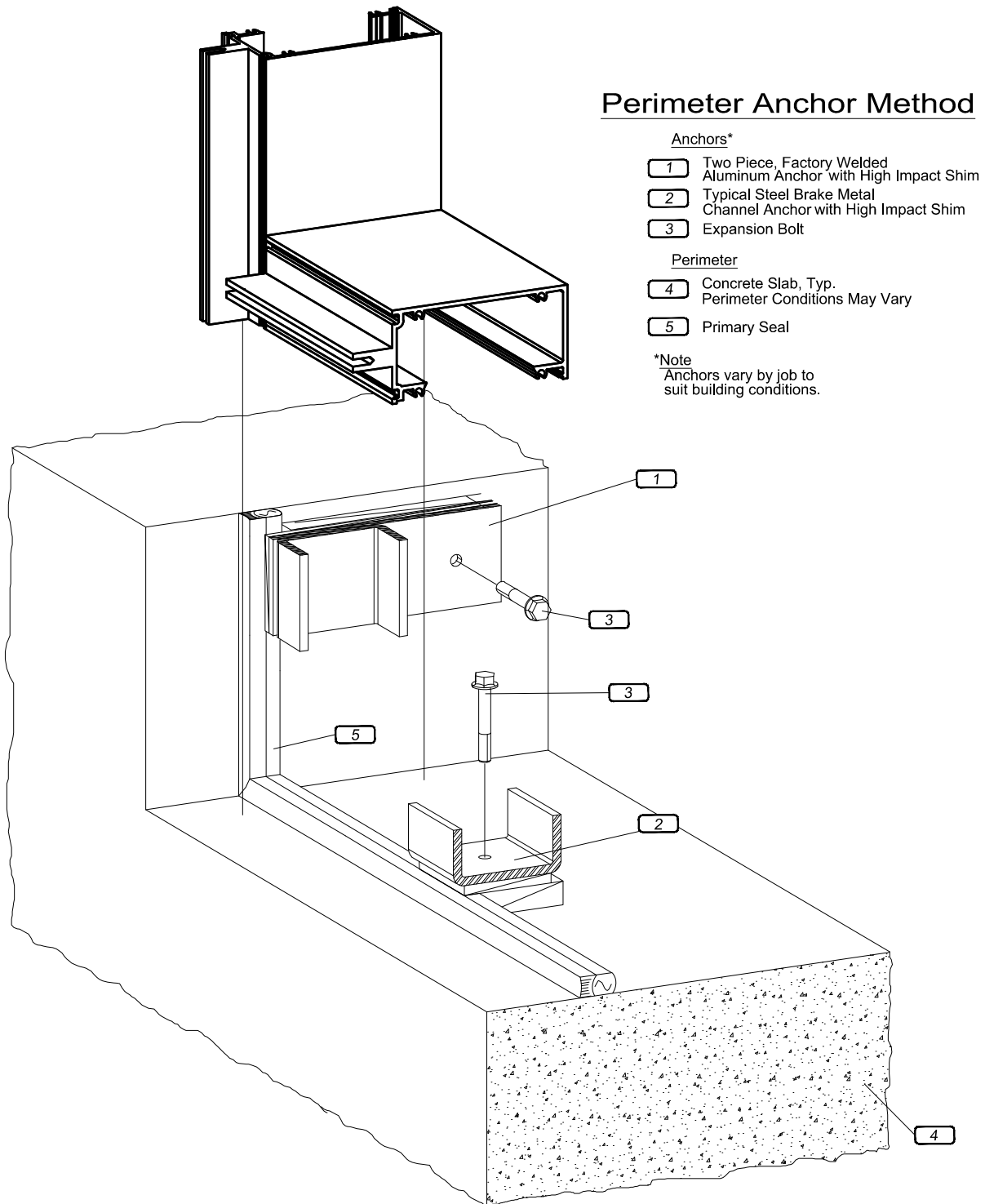
WAUSAU

WINDOW AND WALL
SYSTEMS

Isometric Views

Curtainwall

SUPERWALL™ Series





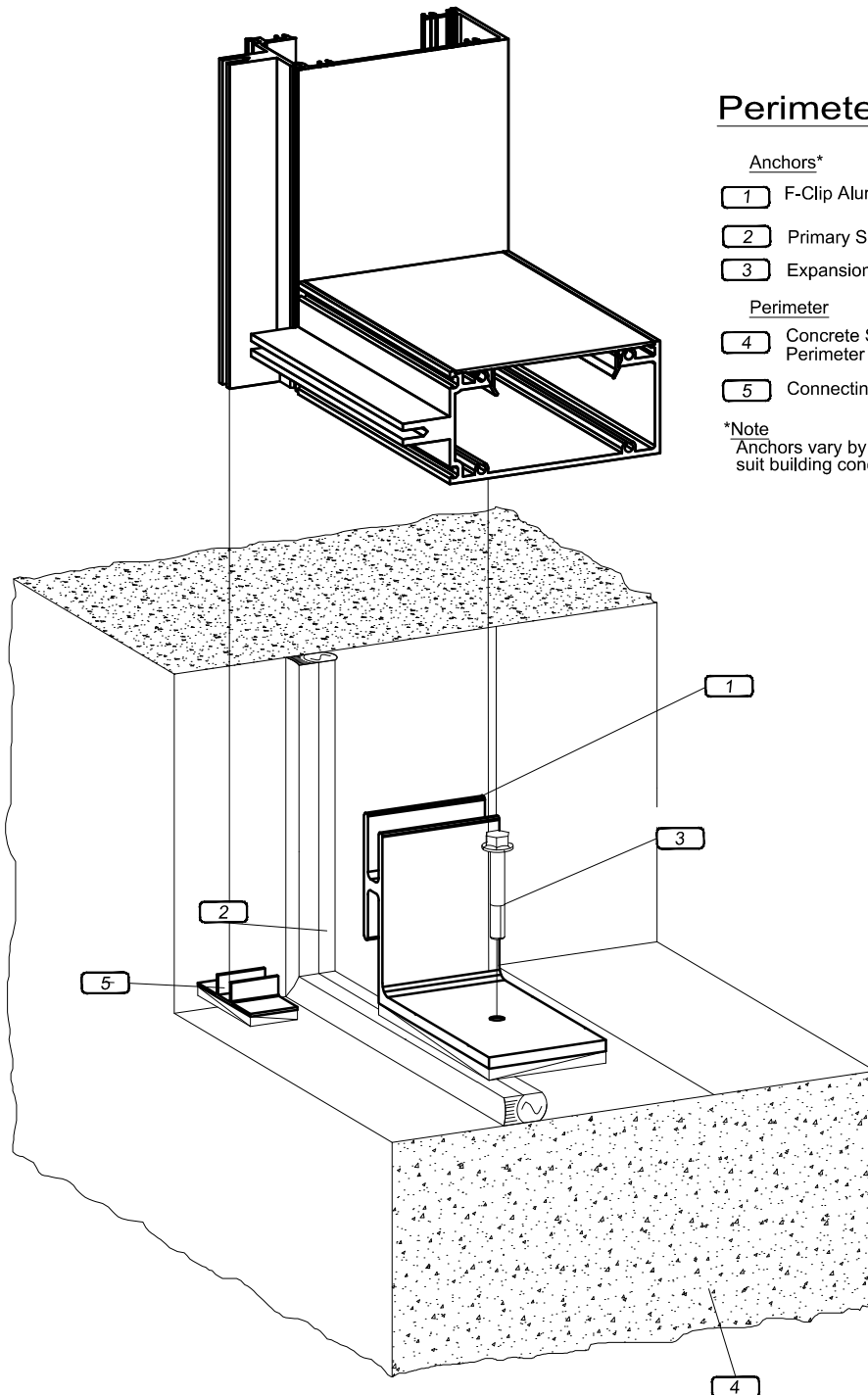
WAUSAU

WINDOW AND WALL
SYSTEMS

Isometric Views

Curtainwall

SUPERWALL™ Series



Perimeter Anchor Method

Anchors*

- 1 F-Clip Aluminum Anchor with High Impact Shim
- 2 Primary Seal
- 3 Expansion Bolt

Perimeter

- 4 Concrete Slab, Typ.
Perimeter Conditions May Vary
- 5 Connecting Clip with High Impact Shim

*Note
Anchors vary by job to
suit building conditions.



WAUSAU

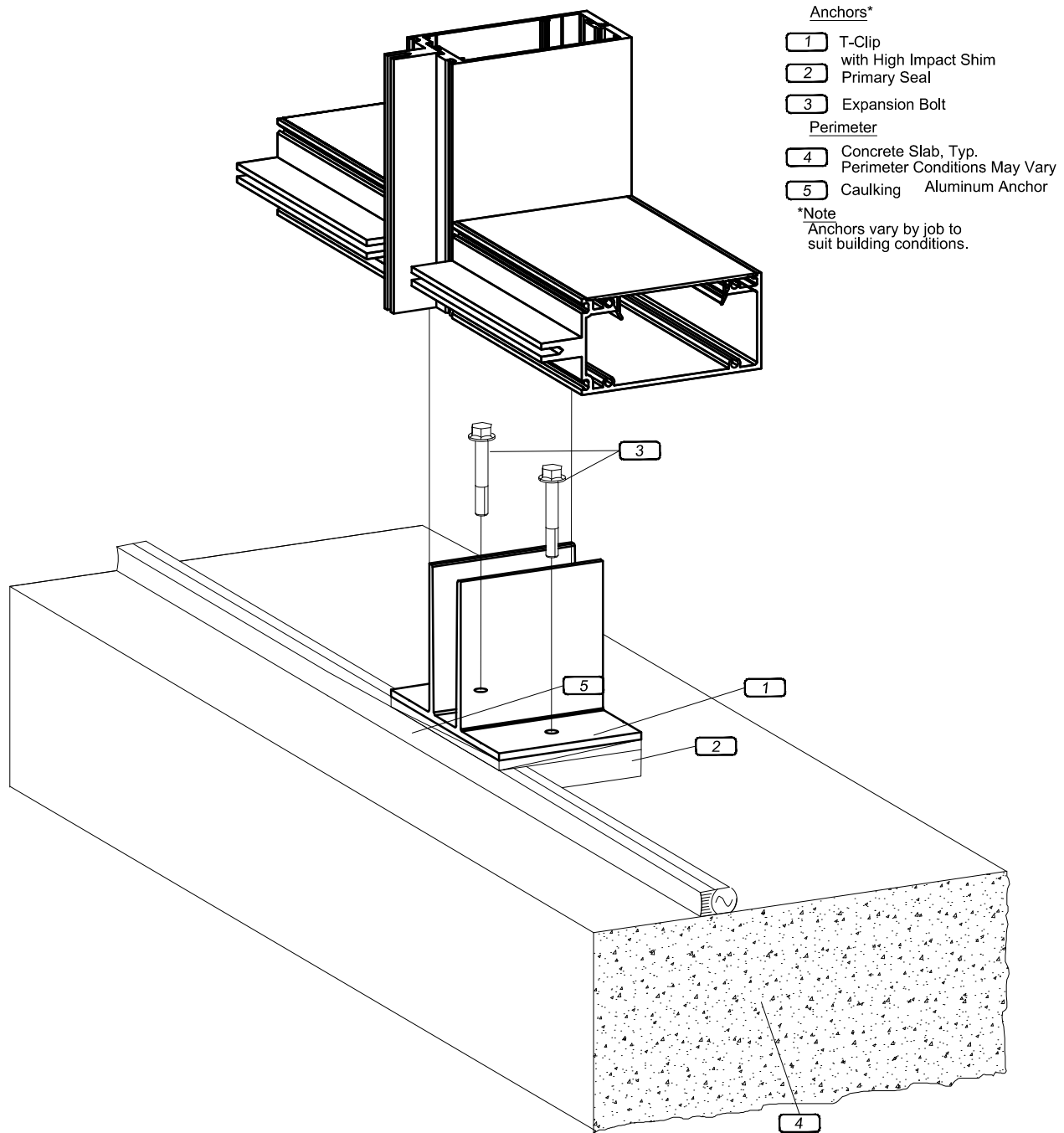
WINDOW AND WALL
SYSTEMS

Isometric Views

Curtainwall

SUPERWALL™ Series

Perimeter Anchor Method





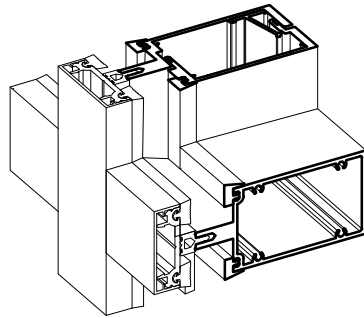
WAUSAU

WINDOW AND WALL
SYSTEMS

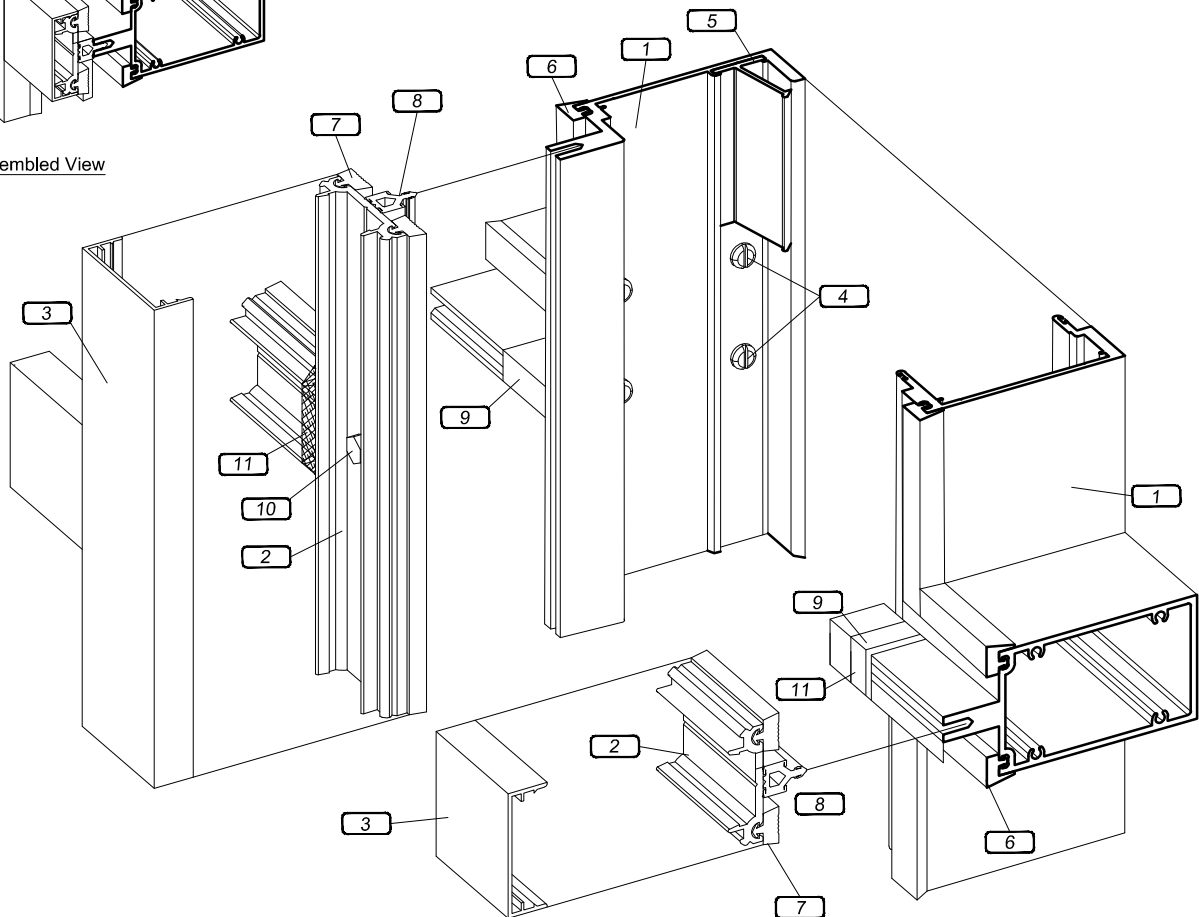
Fabrication, Exploded View

Curtainwall

SUPERWALL™ Series



Assembled View



- 1 0.125" Thick Extruded Aluminum Frame Members
- 2 Extruded Aluminum Pressure Plate
- 3 Extruded Aluminum Snap-on Cover (Optional Profiles Available)
- 4 Standard Frame Fastener Is 10-14 x 1 1/2 " Torx T20 Pan Head Stainless Steel Fastener
- 5 Superwall Anti-Buckle Clip
Peen In Place

- 6 Extruded Sponge EPDM Interior Glazing Gasket
- 7 Extruded Dense EPDM Exterior Glazing Gasket
- 8 EDPM Thermal Separator
- 9 Sponge Zone Dams
- 10 #14 x 1 " Hex Head Stainless Steel Sheet Metal Screw, Type "A"
- 11 Field Applied Sealant