

PRELIMINARY PRESENTATION

CASE STUDY ASSIGNMENT

FAIZAN AHMED

OPAQUE MATERIAL

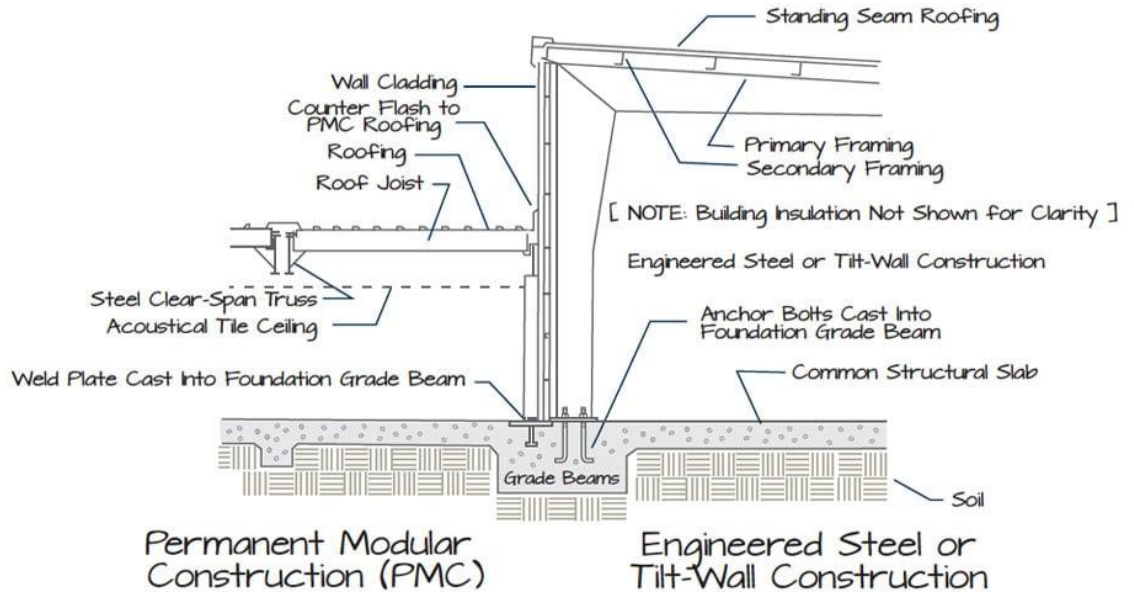
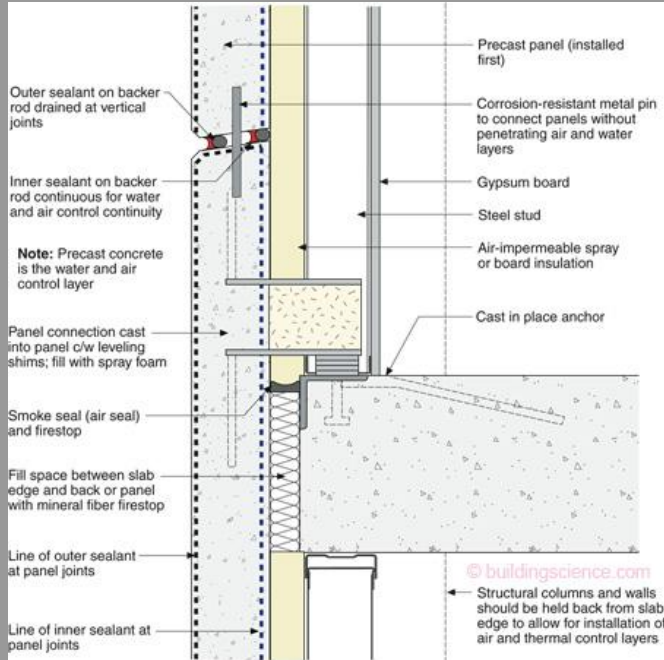
MATERIAL CHOSEN: METAL CLADDING PANEL
COMPANY: HENDRICK CORPORATE

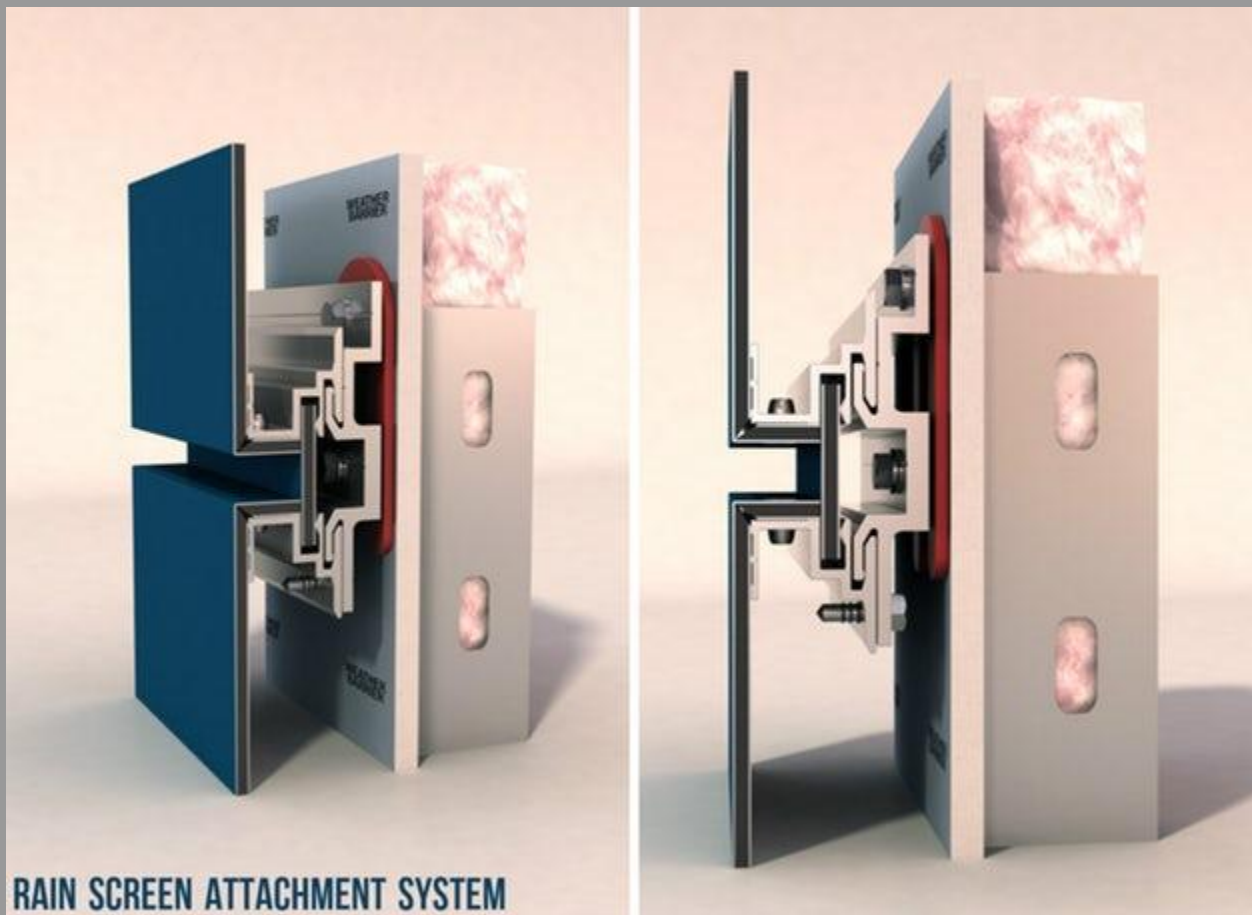


OPAQUE MATERIAL - METAL CLADDING

Metal cladding is a type of exterior cladding made of metal. ... Most other types of cladding systems such as wood cladding, concrete cladding, stone cladding, or stucco cladding are used for wall cladding. In other words, they are used for siding on homes or other buildings.

ASSEMBLY FOR METAL CLADDING



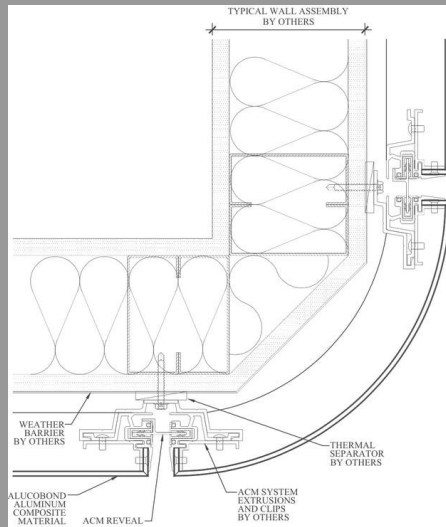


RAIN SCREEN ATTACHMENT SYSTEM

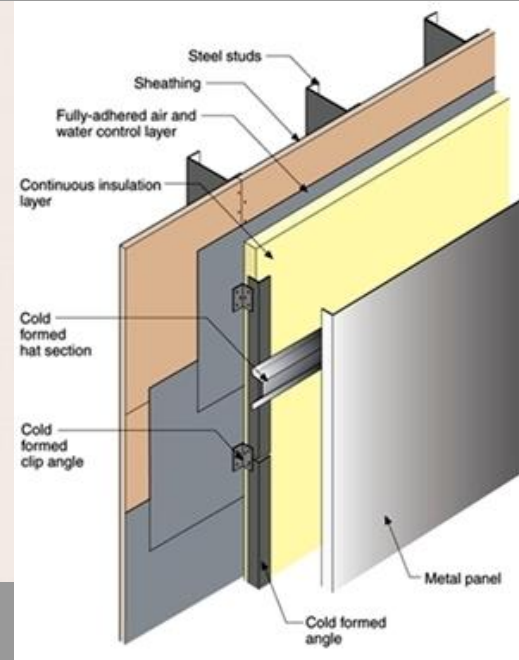
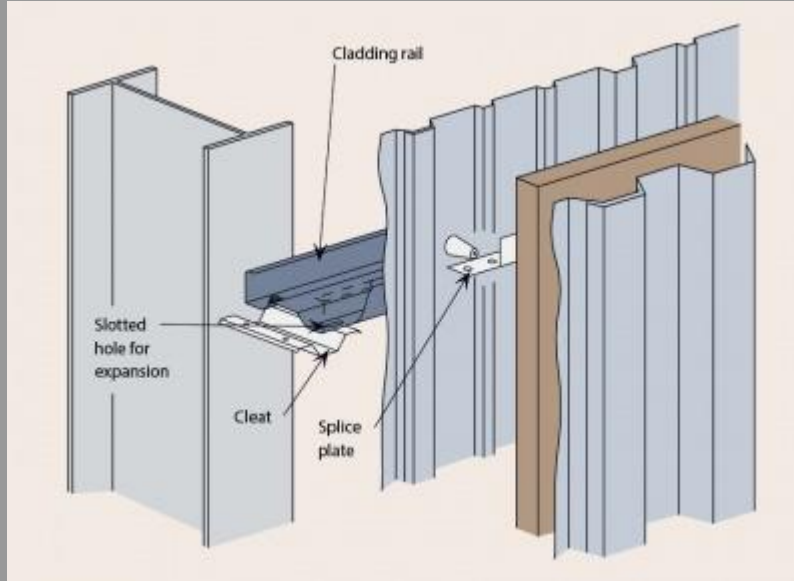
“The Route and Return Wet Seal method is the most economical way to install Alucobond. The setup is simple: A silicone sealant is placed between each panel as an air and water barrier, then basic male/female clips simply attach the cladding to the building — no matter the size, shape or complexity of the panel designs. There’s one problem with this method, however: It leaks.

The Route and Return Dry Seal method is a little less messy. It requires gaskets to be inserted into the joints between the panels instead of the silicone sealant. This allows the façade to stay much cleaner over time. The system also features continuous extrusions around each panel to enhance structural integrity and act as a secondary gutter system. But this method often causes concern over the durability of the gaskets.”

<https://architazer.com/blog/practice/details/behind-the-design-metal-cladding/>



ASSEMBLY FOR METAL CLADDING



OPAQUE MATERIAL: METAL CLADDING YOUTUBE LINK

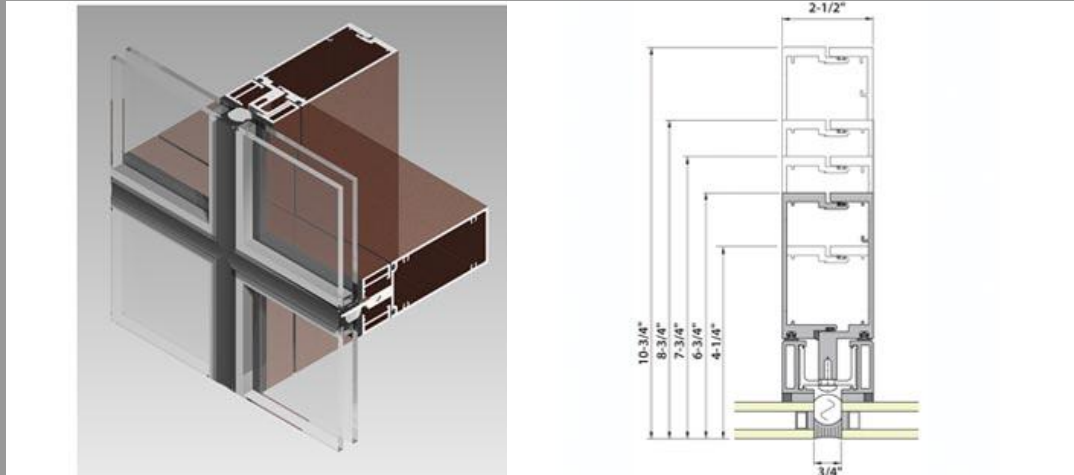
<https://www.google.com/url?sa=t&rct=j&q=&esrc=s&source=video&cd=3&cad=rja&uact=8&ved=0ahUKEwiokpObgrfoAhWjhHIEHW28CcwQtwIINjAC&url=https%3A%2F%2Farchitizer.com%2Fblog%2Fpractice%2Fdetails%2Fbehind-the-design-metal-cladding%2F&usg=AOvVaw040nM5a8Hds36vwH1oj9La>

GLASS CURTAIN WALL SYSTEM

MATERIAL CHOSEN: WINDOW WALL

COMPANY: WASAU

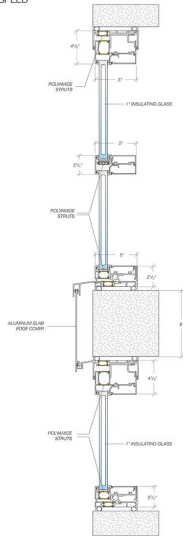
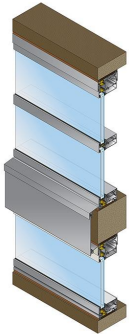
NAME: "SUPER WALL"



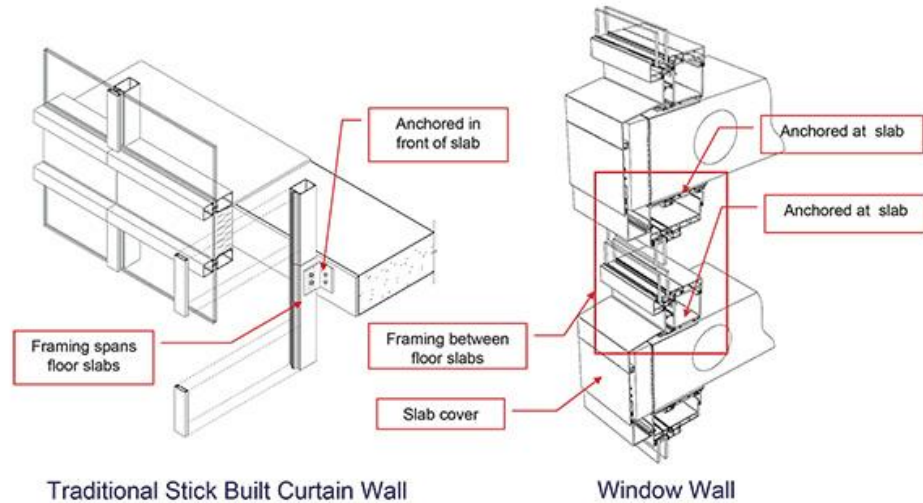
GLASS CURTAIN WALL SYSTEM

UNITIZED THERMAL WINDOW WALL

- FEATURES A POLYAMIDE ISOBAR
- U-FACTOR AS LOW AS 0.26
- SHOP ASSEMBLY IMPROVES QUALITY AND SPEED
- SLIM 2 1/2" FACE TRIM, 5" DEPTH
- OPTIONAL DUAL FINISHES
- SLAB EDGE COVERS AVAILABLE
- FOR 1" INSULATING GLASS



Curtain Wall Versus Window Wall

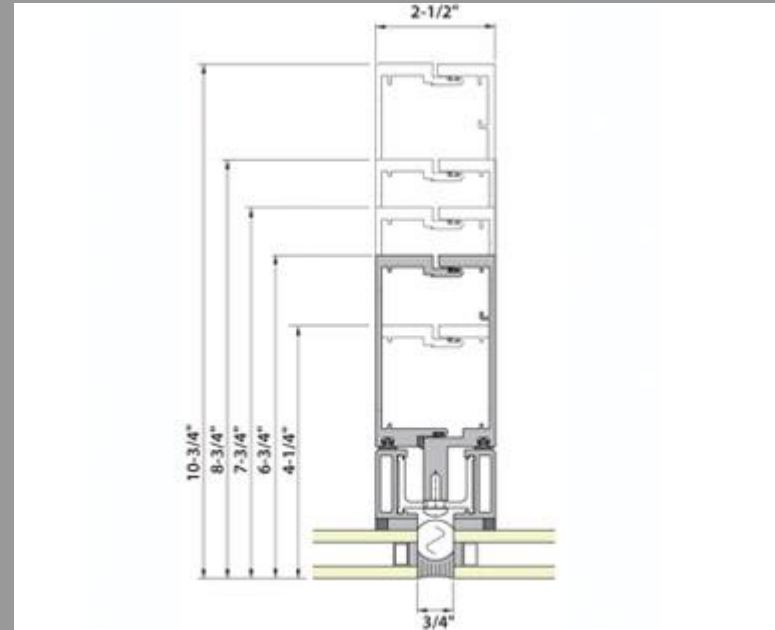
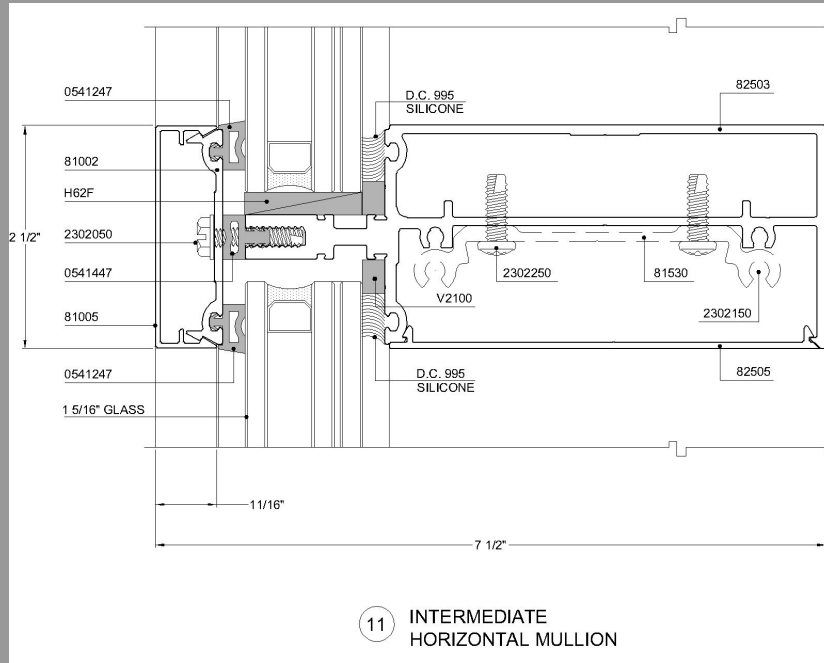


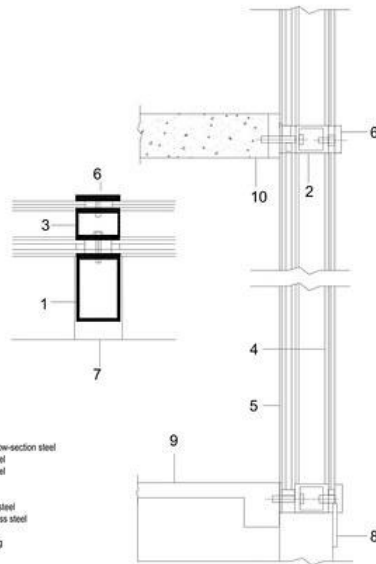
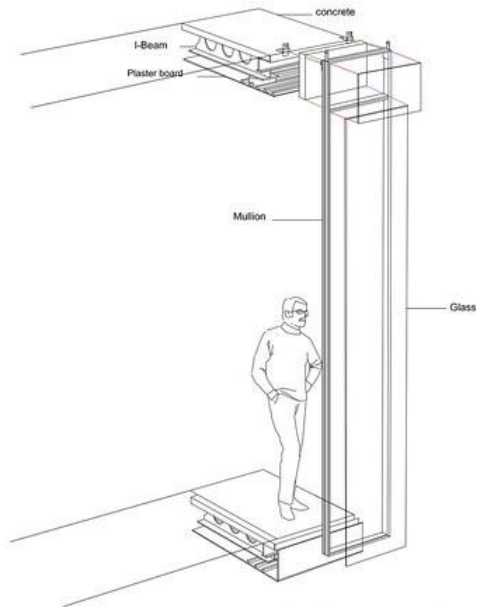


CASE STUDY

**MULTI
ROLLUX
SHOWROOM**

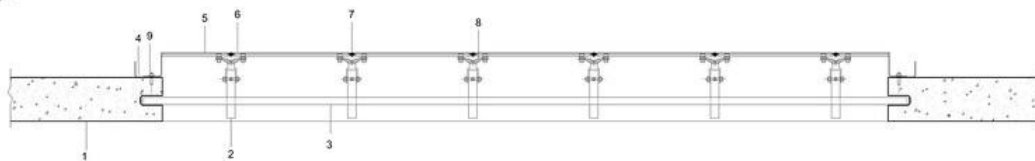
BUTT GLAZED CURTAIN WALL





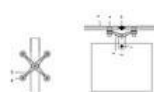
Curtain Wall Section
Section-Elevation
Scale : 1-5

1. facade post, 120/80/5 mm hollow-section steel
2. 50/50/3 mm hollow-section steel
3. 80/50/3 mm hollow-section steel
4. laminated safety glass
5. Insulating glass
6. fixing strip, 50/5 mm stainless steel
7. cladding, bent 1.25 mm stainless steel
8. 80/3 mm stainless steel
9. 30 mm polished marble flooring
10. concrete flooring



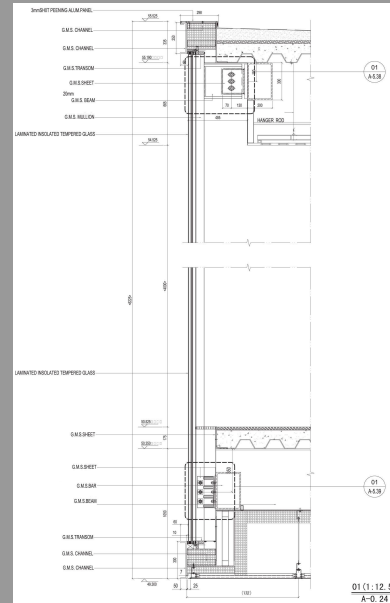
Roof Section
Scale : 1-5

1. Warm Concrete Roof
2. cylinder Ø 60mm stainless steel
3. hollow section box
4. Bent stainless steel
5. insulating glass, 8mm toughened safety glass, 15mm cavity, 2x6mm laminated glass
6. stainless steel fixing
7. Black Silicone Seal
8. Cross-shaped four-point connector, stainless steel
9. Ø 60 mm stainless steel bolt



Spider Fitting
Section-Elevation
Scale : 1-5

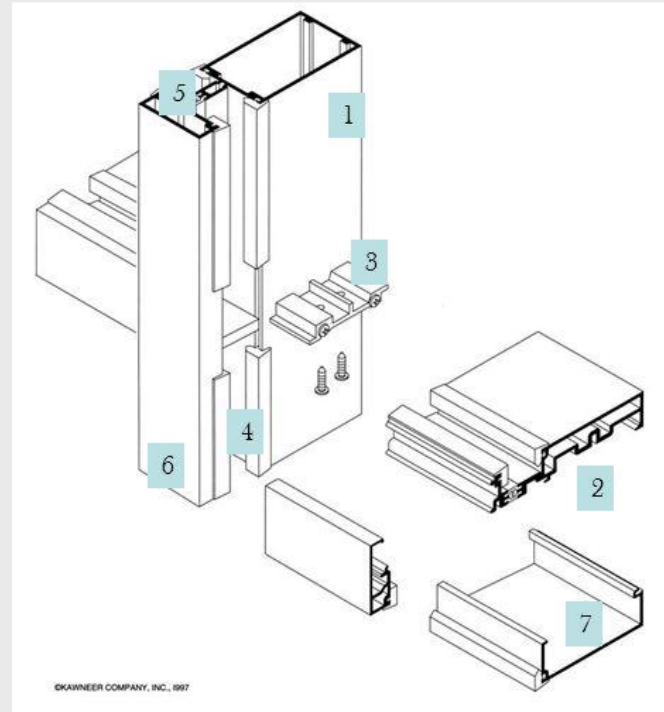
1. Ø 60 mm stainless steel bolt
2. cylinder Ø 60mm stainless steel
3. cross-shaped four-point connector, stainless steel
4. stainless steel fixing
5. insulating glass, 8mm toughened safety glass, 15mm cavity, 2x6mm laminated glass
6. black silicone seal



Inside Glazed Curtain Wall System

In an inside glazed system workers stand inside the building to install the glass. It is more convenient and economical for tall buildings but requires more elaborate extrusions.

1. Vertical mullions
2. Horizontal mullions
3. Shear block
4. Glazing gaskets
5. Pressure plates
6. Snap on cover
7. Bottom half extrusion



WINDOW WALL:

https://www.google.com/url?sa=t&rct=j&q=&esrc=s&source=video&cd=5&cad=rja&uact=8&ved=0ahUKEwiU9amugrfoAhWUmXIEHThNBI8QtwIIQjAE&url=https%3A%2F%2Fwww.youtube.com%2Fwatch%3Fv%3D_0bbegdkibA&usg=AOvVaw226lvhsRipZI5t42ToNDvV

<https://www.hendrickcorp.com/architectural/project-gallery/profile-bar-w-anti-slip-holmberg-bridge/>

<http://www.wausauwindow.com/index.cfm?pid=44&pageTitle=Product%20Detail&prID=26>

<https://architizer.com/blog/practice/details/behind-the-design-metal-cladding/>

https://www.google.com/search?q=BUTT+GLAZED+CURTAIN+WALL&tbm=isch&ved=2ahUKEwi13te2hLfoAhVLPd8KHREcA1AQ2-cCegQIABAA&og=BUTT+GLAZED+CURTAIN+WALL&gs_l=img.3...33522.42066..42350...0.0..0.77.1606.24.....0....1..gws-wiz-img.....35i39j0j0i67j0i131.opYLDTtfpsE&ei=hgt8XrWDAsv6_AaRulyABQ&bih=1002&biw=2048&hl=en#imgrc=WumArg9wetiu7M&imgdii=eYeubWGdQ0P0NM