

Rainscreen Alphon

&

1600 Wall System 2 Curtain Wall

Jonathan Arias

Rainscreen Alphaton

How does it attach to building?

- Aluminum substructure support system

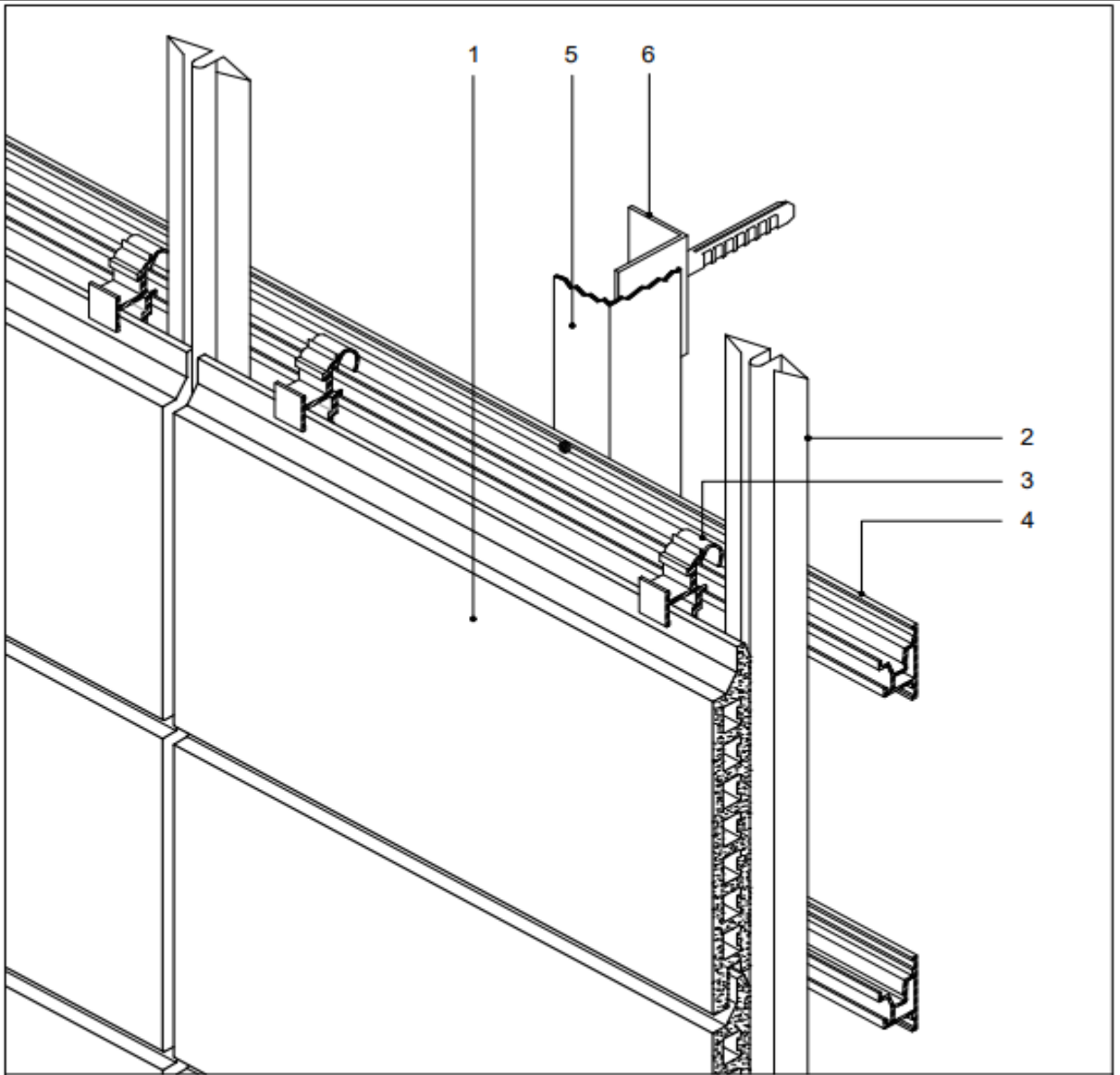
How does it provide thermal resistance?

- It's a mineral wool type insulation
- It is between the rainscreen panel and exterior sheathing
- Thermal bridge is located by insulation
- Tapered rigid insulation on roof

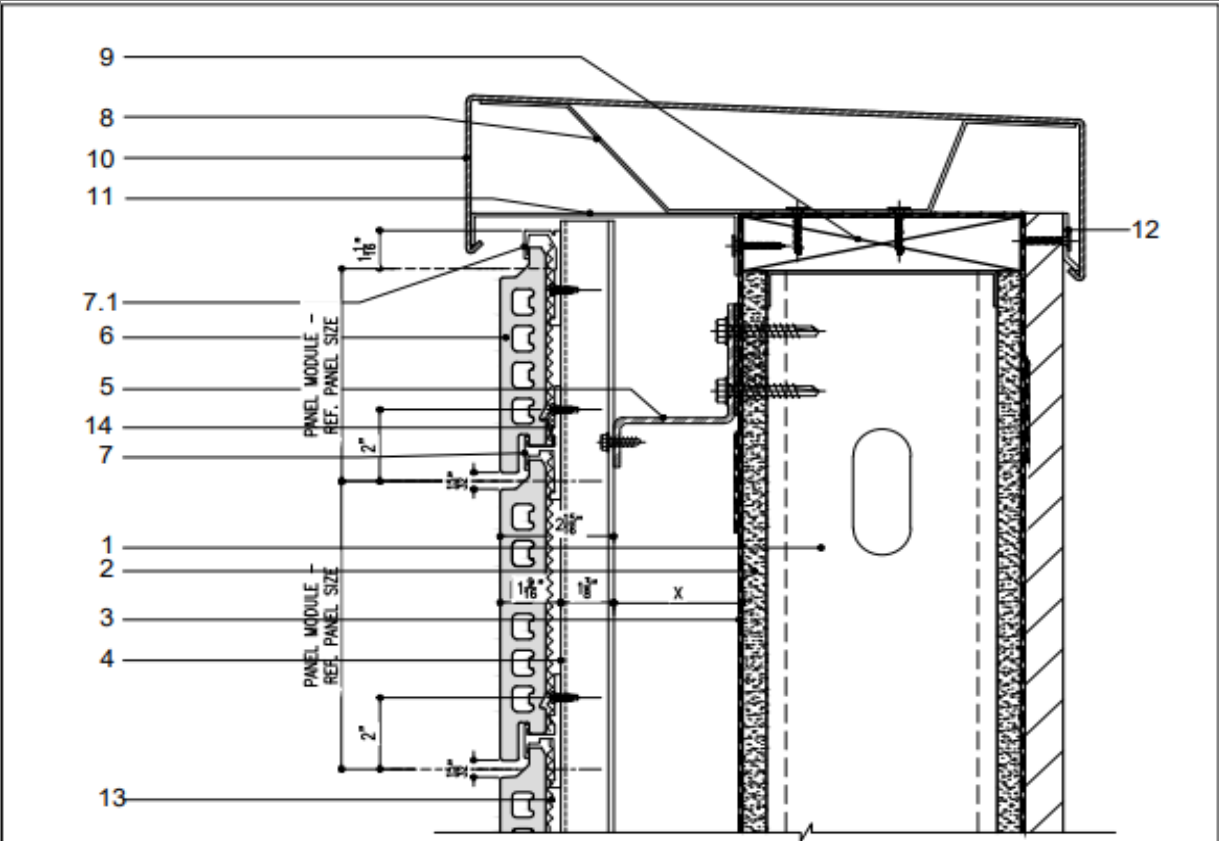
How does it waterproof the building?

- Waterproofing membrane is behind insulation
- Moisture barrier is behind waterproofing membrane
- Ventilated terracotta rainscreen system keeps building dry. No sealant or grout required

Section Details



- 1. ALPHATON GEN. 06 ® terra cotta PANEL
- 2. Spacer
- 3. Terra cotta fastening aluminum clip
- 4. Horizontal substructure aluminum extrusion
- 5. Continuous aluminum angle
- 6. Non-continuous aluminum angle



- 1. Metal Studs wall cavity
- 2. Substrate
- 3. Moisture barrier
- 4. Vertical support aluminum extrusion
- 5. Aluminum horizontal Z-girts (or double L angles)
- 6. ALPHATON® terra cotta panel
- 7. Terra cotta panel middle aluminum clip
- 7.1 Terra cotta panel top aluminum clip
- 8. Anchor clip
- 9. Blocking
- 10. Aluminum snap-on coping cap
- 11. Formed aluminum non continuous support clip
- 12. Cleat
- 13. Pressure gasket
- 14. Stainless steel spring clip

| | | |
|---------------------|------------|---------|
| Version-8 | DETAIL No. | OPTION. |
| SYSTEM: ALPHATON | Gen. 06 0 | d |

GENERAL ISOMETRIC VIEW

Shildan, Inc.
 2047 Briggs Road
 Mount Laurel, NJ 08054
 T: (215) 525-4510
 F: (215) 525-4511
 ©2008 by Shildan, Inc.

Note: This is conceptual detail; project specific details must be reviewed with Shildan.

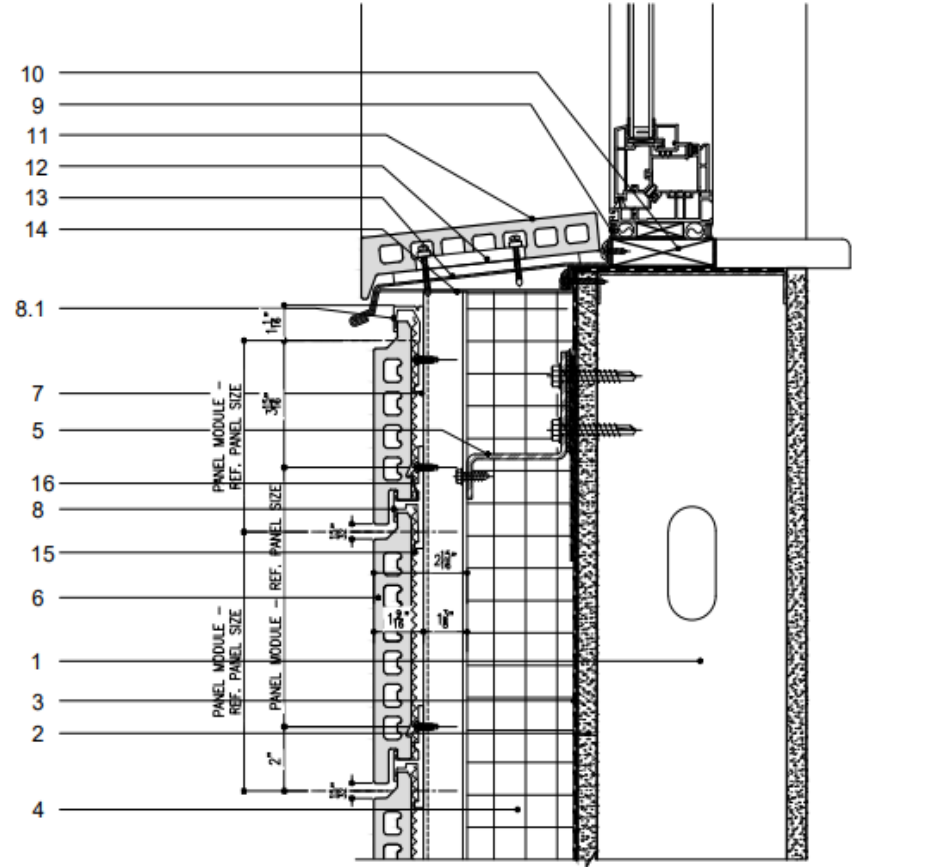
| | | |
|---------------------|------------|---------|
| Version-4.0 | DETAIL No. | OPTION. |
| SYSTEM: ALPHATON | M2 14 | a |

COPING DETAIL
 W/ ALUMINUM CAP

Note: This is conceptual detail; project specific details must be reviewed with Shildan.

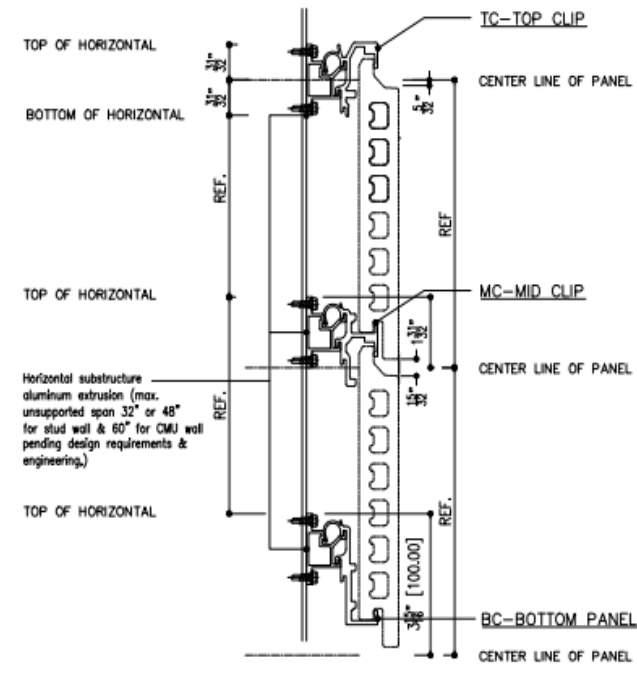
Shildan, Inc.
 2047 Briggs Road
 Mount Laurel, NJ 08054
 T: (215) 525-4510
 F: (215) 525-4511
 ©2008 by Shildan, Inc.

Section Details

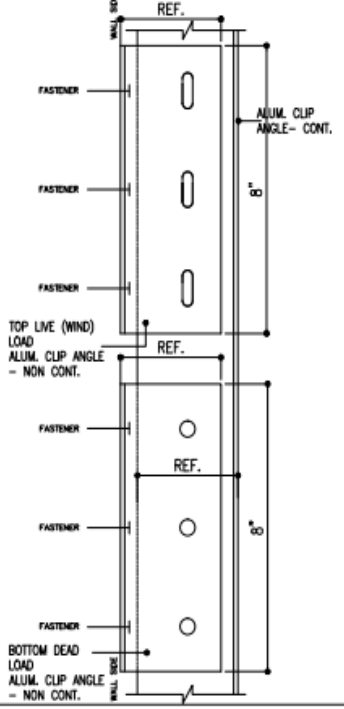


- | | |
|---|---------------------------------------|
| 1. Metal stud | 10. Blocking |
| 2. Substrate | 11. Terra cotta sill |
| 3. Moisture barrier | 12. Pressure attachment clip |
| 4. Mineral wool type insulation (thickness per spec.) | 13. Formed aluminum flashing sill |
| 5. Aluminum horizontal Z-girts (or double L angles) | 14. Formed aluminum clips (non-cont.) |
| 6. ALPHATON® terra cotta panel | 15. Pressure gasket |
| 7. Vertical support aluminum extrusion | 16. Stainless steel spring clip |
| 8. Terra cotta panel middle aluminum clip | |
| 8.1 Terra cotta panel top aluminum clip | |
| 9. Sealant & backer rod | |

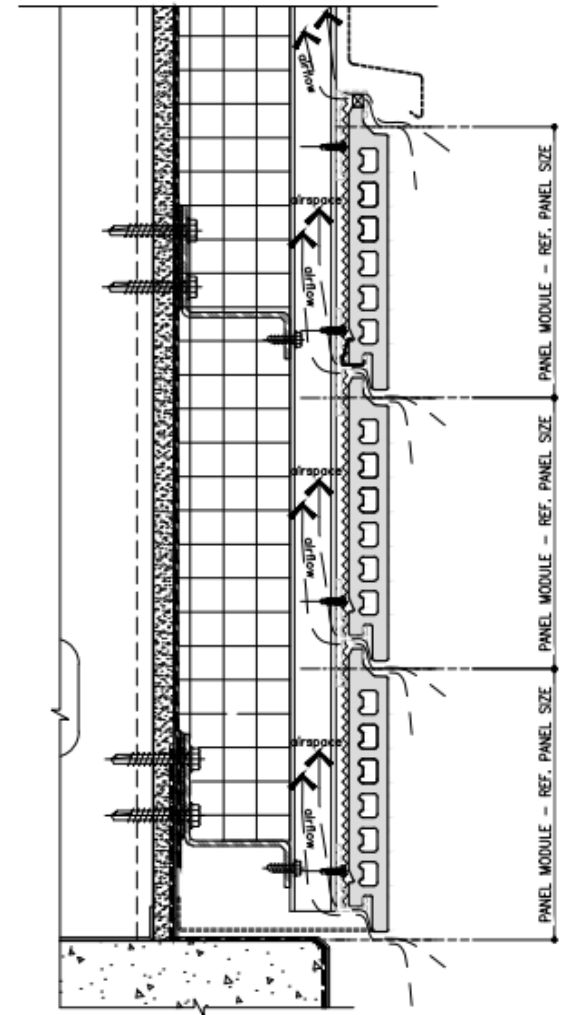
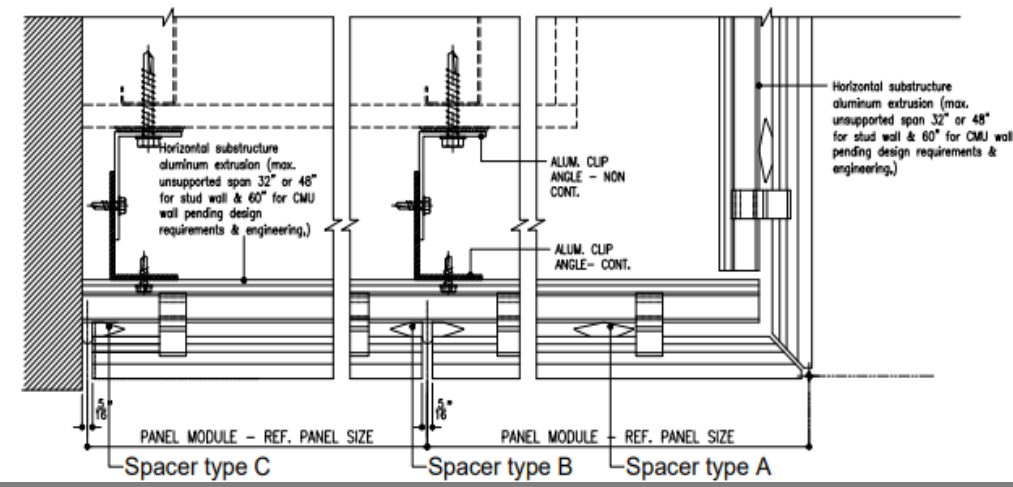
PANEL Fastening Aluminum Clips



Vertical Support



Gen. 06 Vertical Support System



Version - 4.0

| | | |
|---------------------|---------------------------|---------------------|
| SYSTEM: ALPHATON | DETAIL No. M212 | OPTION. b |
|---------------------|---------------------------|---------------------|

TERRA COTTA SILL DETAIL

Note: This is conceptual detail; project specific

Shildan, Inc.
2047 Briggs Road
Mount Laurel, NJ 08054
T: (215) 525-4510
F: (215) 525-4511
©2008 by Shildan, Inc.

Version - 4.0

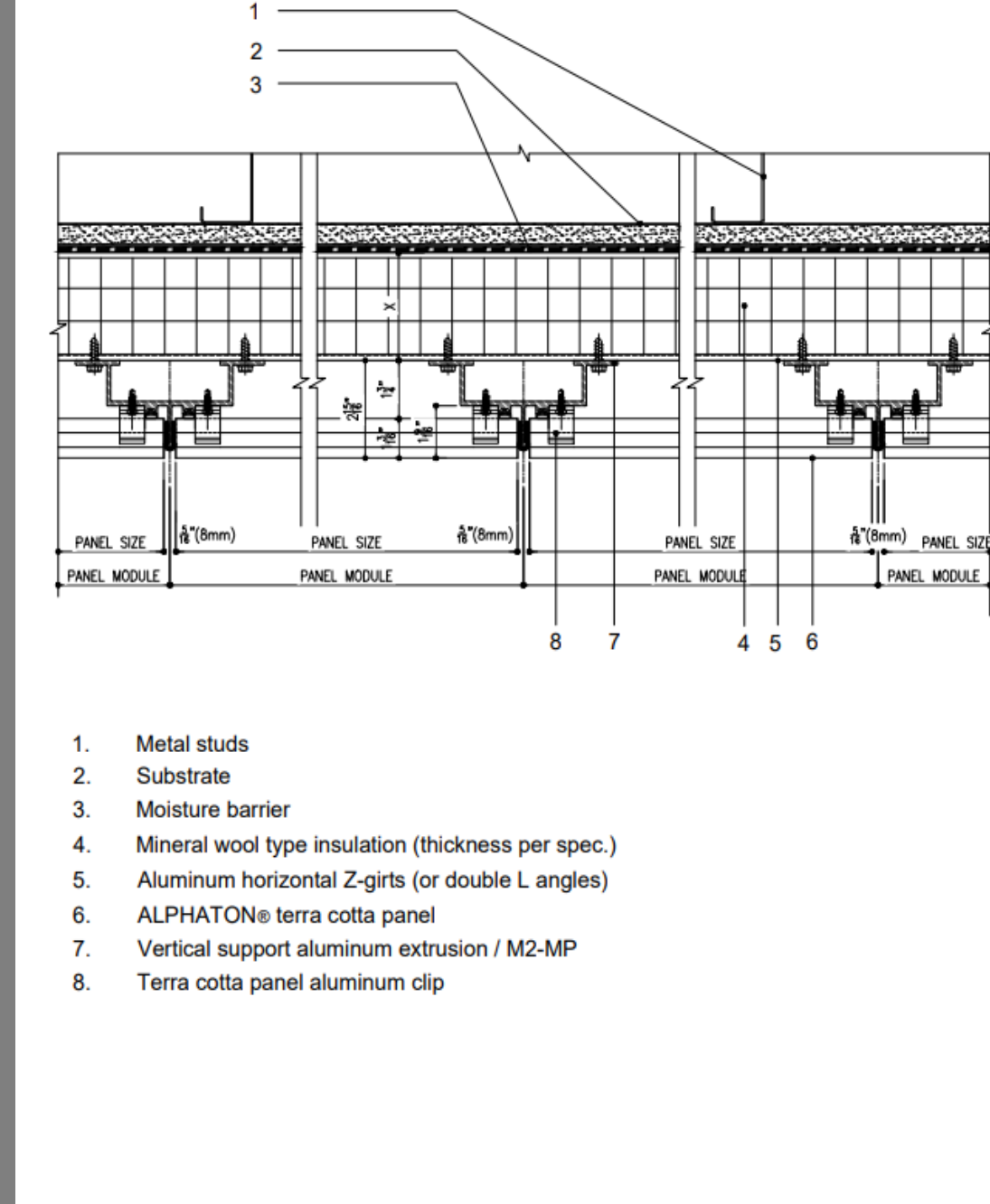
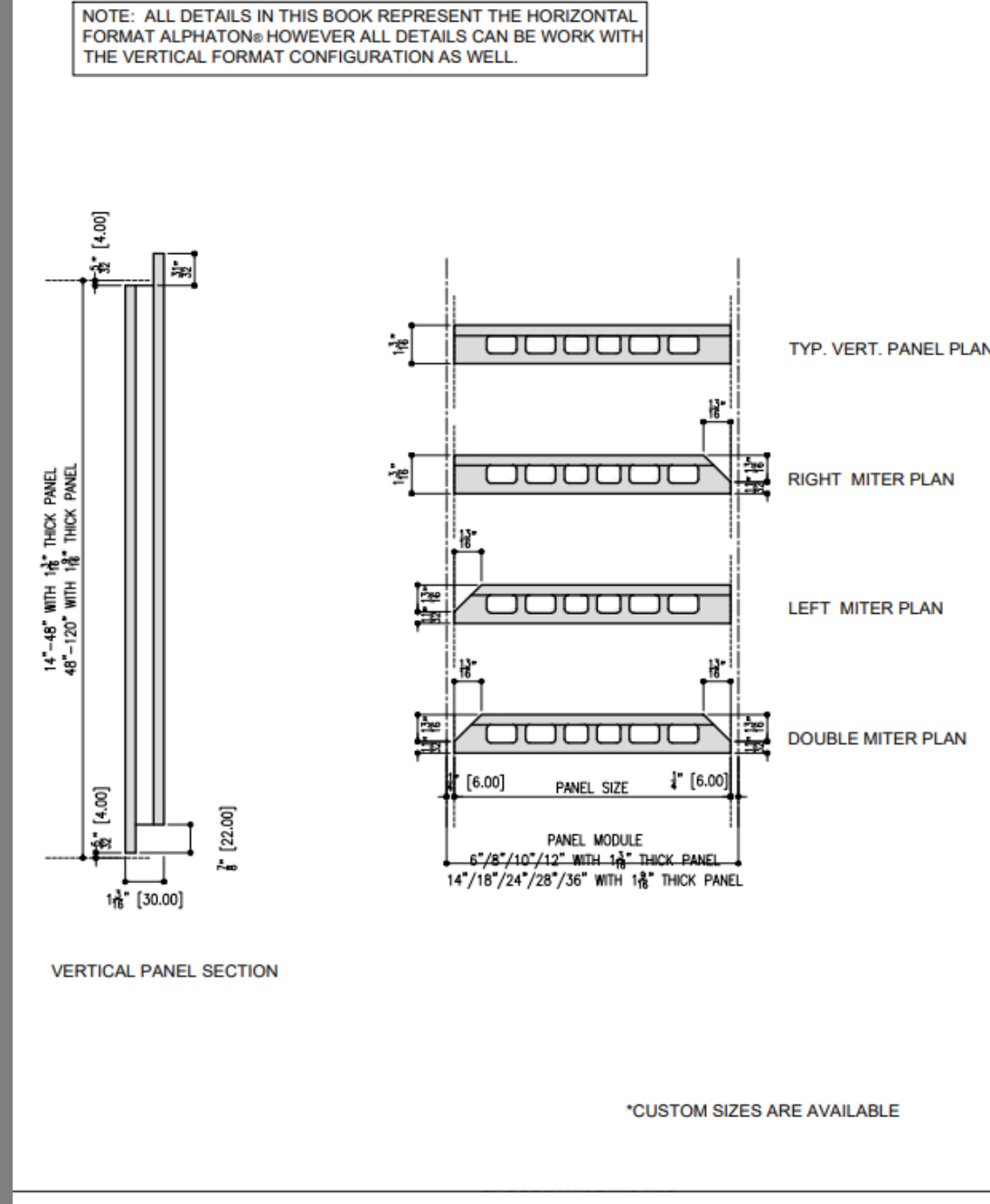
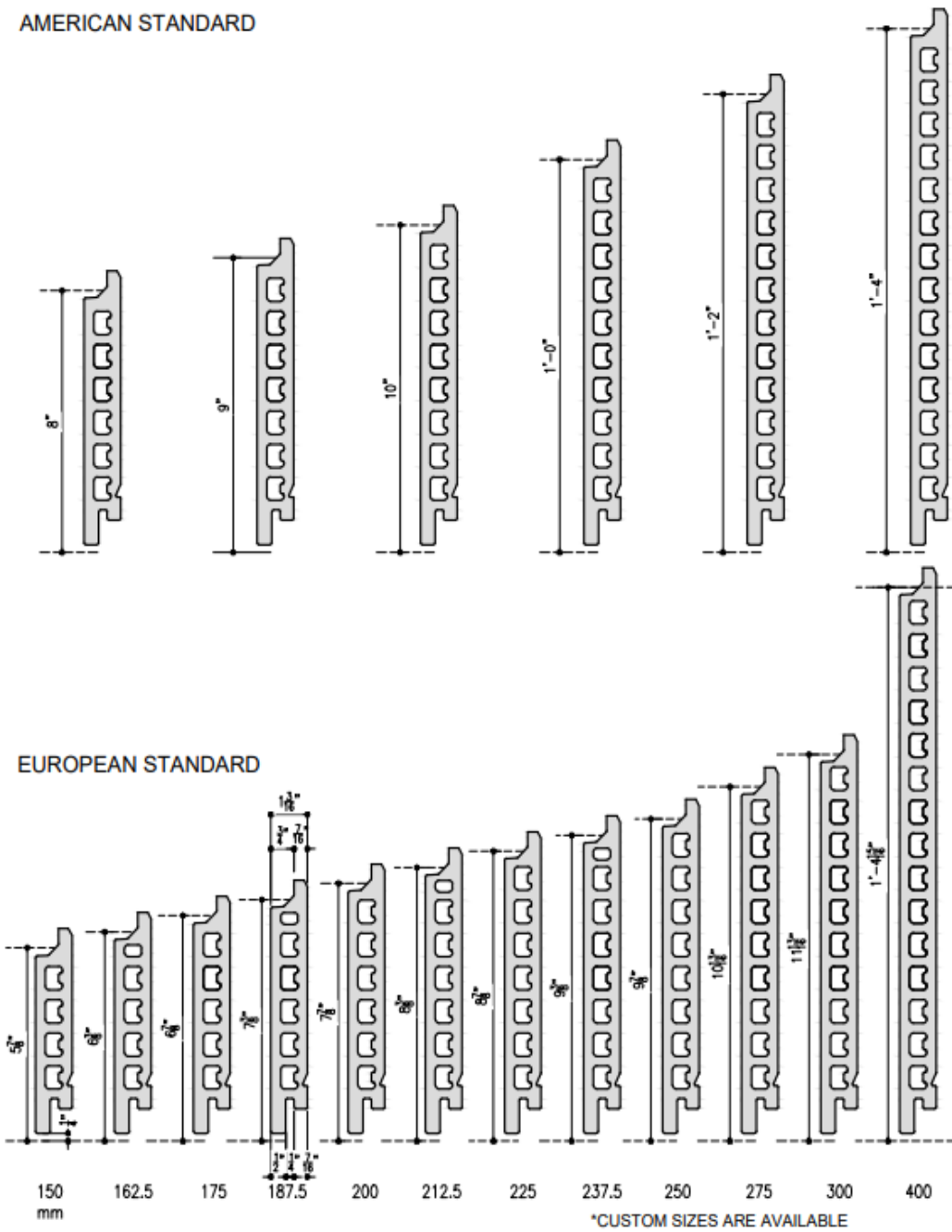
| | | |
|---------------------|--------------------------|---------------------|
| SYSTEM: ALPHATON | DETAIL No. M20 | OPTION. e |
|---------------------|--------------------------|---------------------|

Air Flow Diagram

Note: This is conceptual detail; project specific details must be reviewed with Shildan.

Shildan, Inc.
2047 Briggs Road
Mount Laurel, NJ 08054
T: (215) 525-4510
F: (215) 525-4511
©2008 by Shildan, Inc.

Section Details



| | | | | |
|---------------------|------------|------------|---|---|
| Version-4.0 | DETAIL No. | OPTION. | STANDARD AMERICAN ALPHATON® PANEL MODULE <small>Note: This is conceptual detail; project specific</small> | Shildan, Inc. 2047 Briggs Road Mount Laurel, NJ 08054 T: (215) 525-4510 F: (215) 525-4511 <small>©2008 by Shildan, Inc.</small> |
| SYSTEM: ALPHATON | M2 | 0 b | | |

| | | | | |
|---------------------|----------------|------------|---|---|
| Version-8 | DETAIL No. | OPTION. | EUROPEAN STANDARD ALPHATON® PANEL MODULE (VERTICAL FORMAT) <small>Note: This is conceptual detail; project specific details must be reviewed with Shildan</small> | Shildan, Inc. 2047 Briggs Road Mount Laurel, NJ 08054 T: (215) 525-4510 F: (215) 525-4511 <small>©2008 by Shildan, Inc.</small> |
| SYSTEM: ALPHATON | Gen. 06 | 0 e | | |

| | | | | |
|---------------------|------------|------------|---|---|
| Version-4.0 | DETAIL No. | OPTION. | TYP. PLAN DETAIL <small>Note: This is conceptual detail; project specific</small> | Shildan, Inc. 2047 Briggs Road Mount Laurel, NJ 08054 T: (215) 525-4510 F: (215) 525-4511 <small>©2008 by Shildan, Inc.</small> |
| SYSTEM: ALPHATON | M2 | 1 - | | |

Howard University Terracotta Rainscreen



1600 Wall System 2 Curtain Wall

How does it attach to building?

- Outside glazed or SSG version can be used independently or as an integrated system
- Pressured glazed system for low and mid-rise applications
- Snapped to optional open-back mullions

How does it provide thermal resistance?

- Provides thermal resistance by means of continuance $\frac{1}{4}$ " low conductance spacer
- Features polyamide thermal break that allows for high thermal performance
- Performance enhanced with 1" and 1-3/4" insulating glass
- Align insulating glass with thermal break maintains thermal continuity

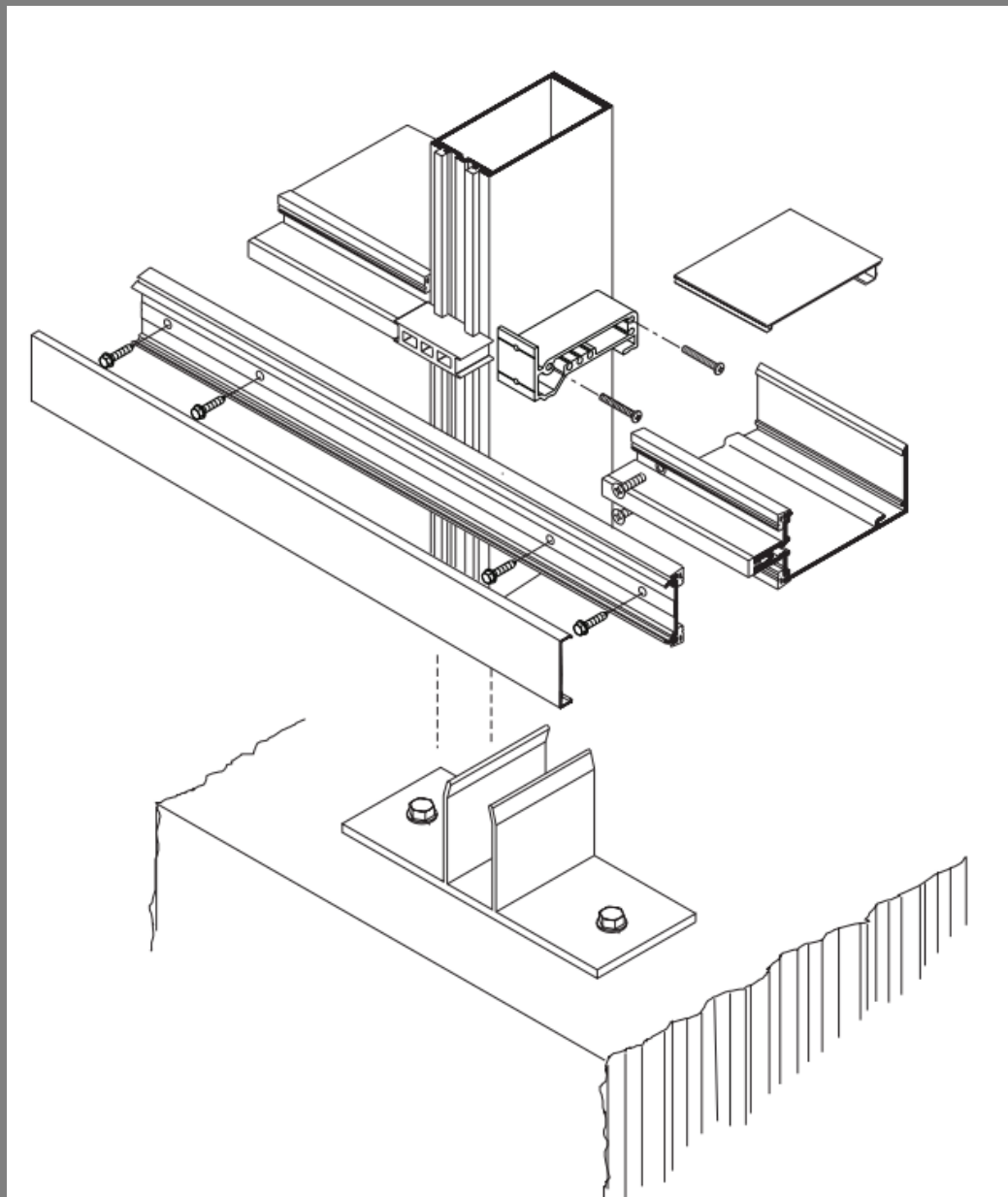
How does it waterproof the building?

- Resistant 2-1/2" sightline for heavy rains and wind
- Provides rainscreen and backpans

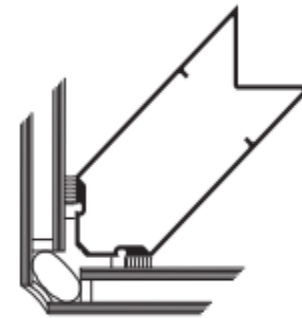
Building Information

PERFORMANCE TEST STANDARDS

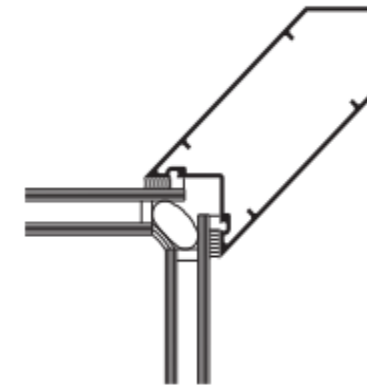
| | |
|---------------------------|-------------|
| Air Performance | ASTM E283 |
| Static Water Penetration | ASTM E331 |
| Dynamic Water Penetration | AAMA 501.1 |
| Structural Performance | ASTM E330 |
| U-factor, CRF | AAMA 1503.1 |
| Sound Transmission | ASTM E90-90 |
| Seismic Performance | AAMA 501.4 |



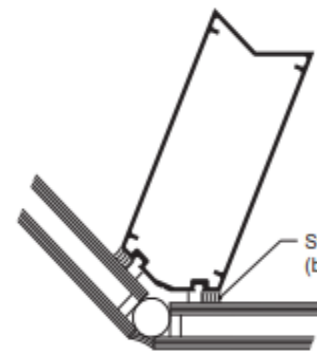
NOTE: 1" SYSTEM SHOWN, 1/4" SYSTEM SIMILAR.



90° OUTSIDE CORNER



90° INSIDE CORNER

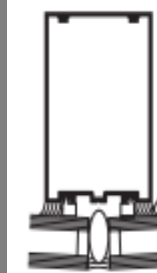


135° OUTSIDE CORNER

Structural Silicone Sealant (by Others)*



135° INSIDE CORNER



0° TO 5°

Structural Silicone Sealant (by Others)*

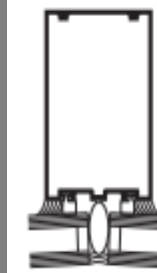


5° TO 15°



15° TO 25°

OUTSIDE SPLAYED MULLIONS



0° TO 5°



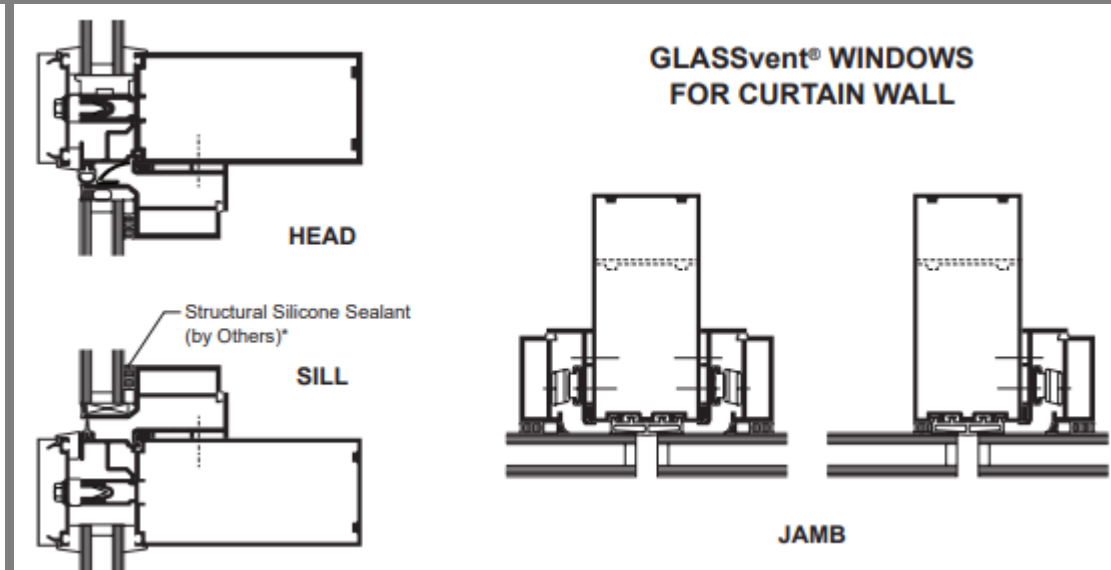
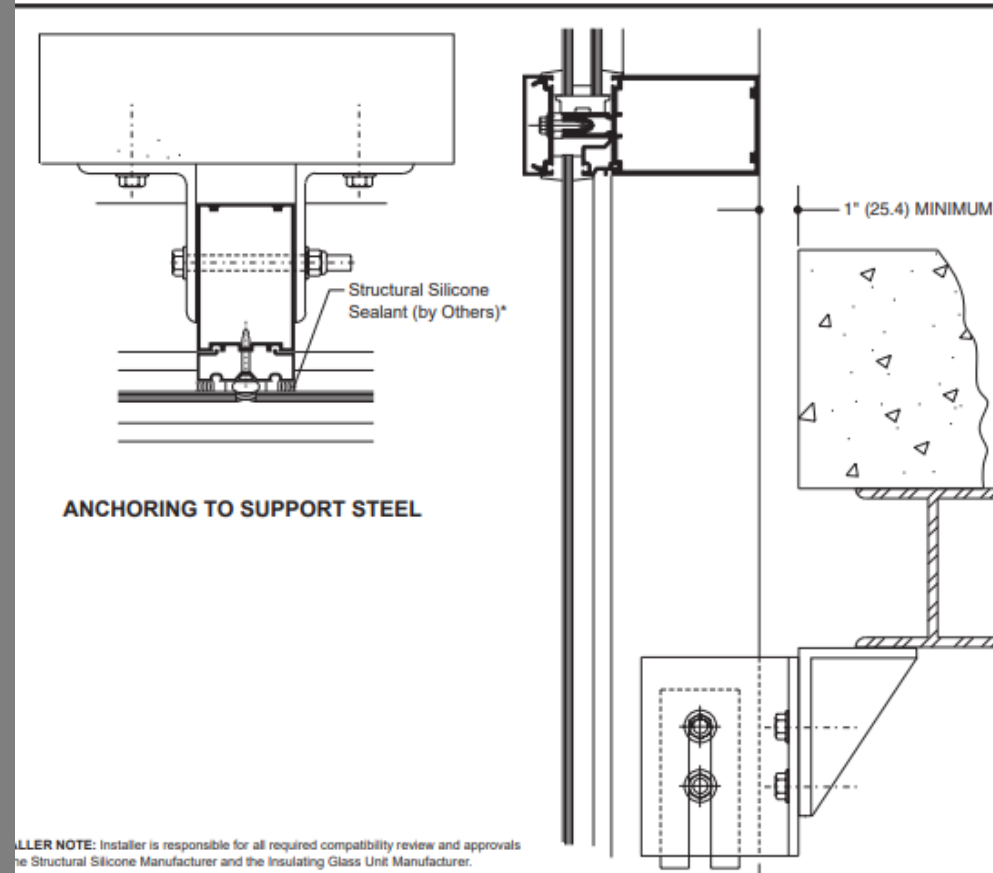
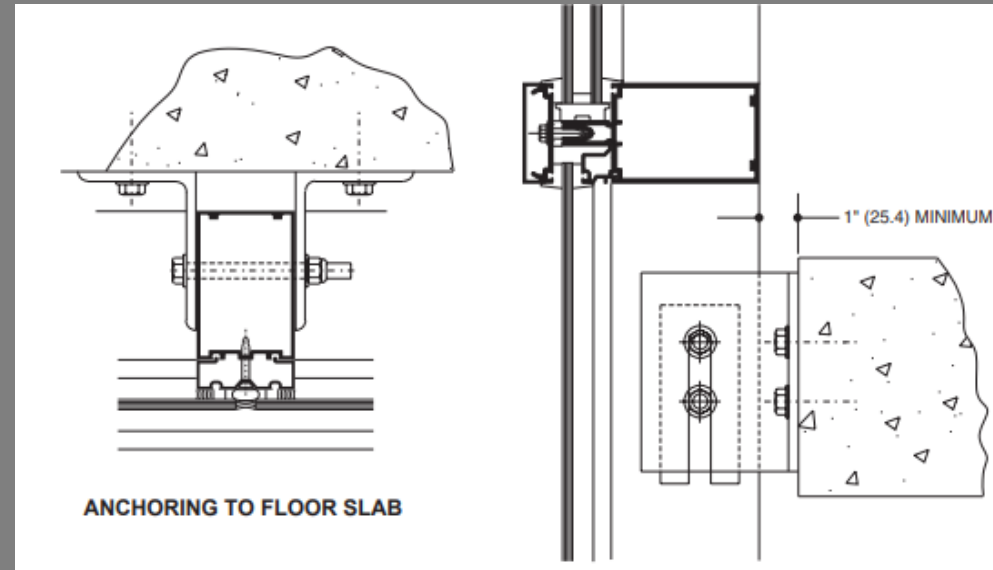
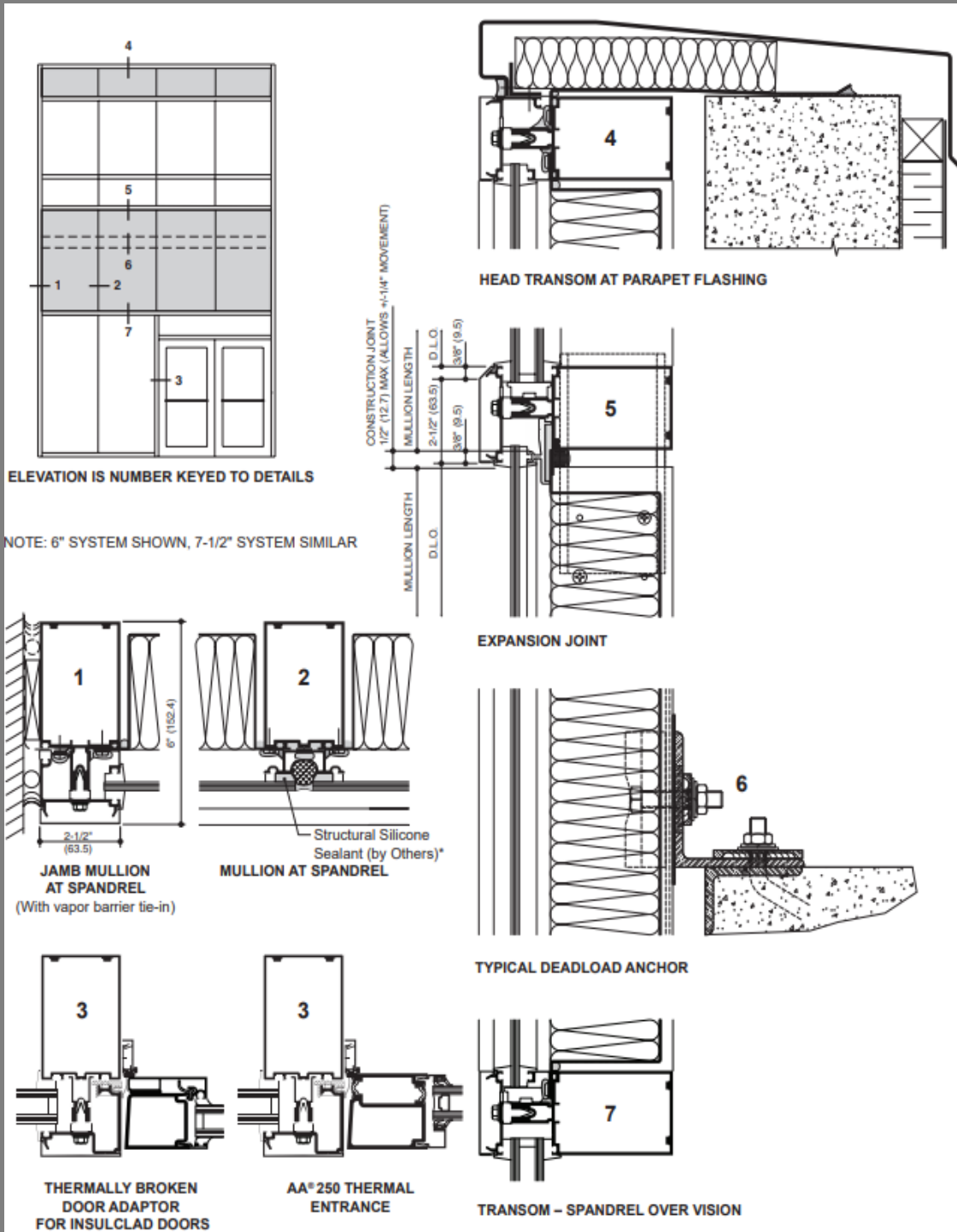
5° TO 15°



15° TO 25°

INSIDE SPLAYED MULLIONS

Section Details



Realm Condominiums

