

Preliminary Façade Materials Presentation

Emmanuel Estevez

ARCH 2431 Building Technology III

Prof. Paul King

Spring Semester 2020

Rangel Ulerio
Faizan Ahmed
Jun Hao Tan

Opaque Material-Case Study

Nordstrom Mall

Located: Ottawa Canada

Designed By: Callison Architects



Opaque Material – Neolith HC System

The Hidden System with longitudinal adhesions was developed for Neolith tiling, is comprised of a hidden support system which uses a longitudinal elastic chemical adhesive with a vertical support featuring T- or L-profiles depending on whether the profiles coincide with the joints between the Neolith boards or reinforce the center of the joints and bear the support through retention or sustenance supports.



Neolith HC System Vertical Section

1-Thermal Insulation

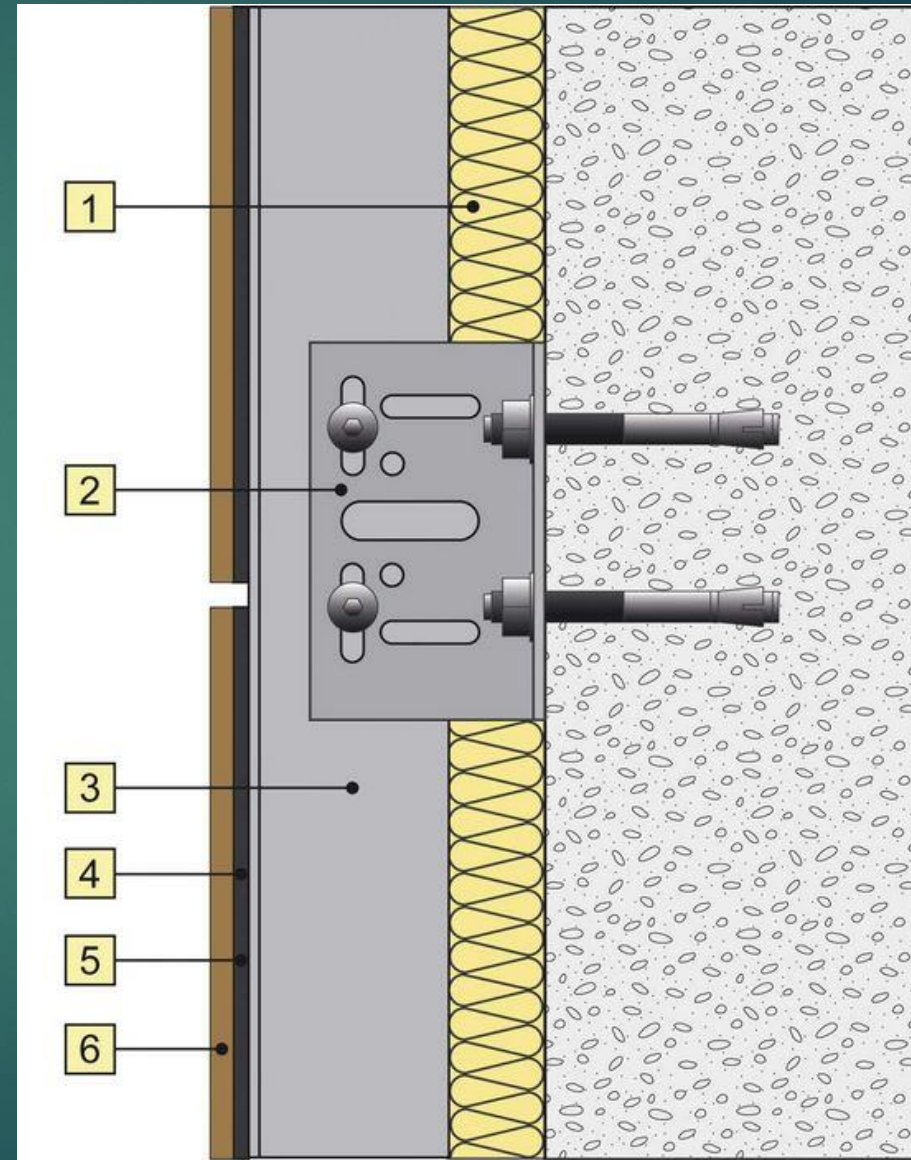
2-ESC aluminum 100x65x60x3

3-Vertical aluminum profile "T 100x50x2"

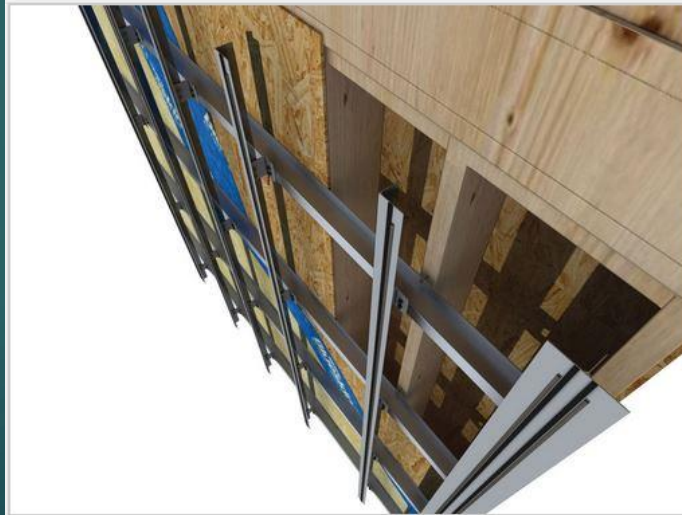
4-Adhesive PanelTack-HM

5-Double side tape adhesive

6-Neolith® Slab



Neolith HC System Installation Steps



Opaque Material - Neolith HC System Detail

- ▶ Enables the connection of different types of materials.
- ▶ A hidden fixing system is created without affecting the appearance.
- ▶ Prevents galvanic corrosion via electrical insulation and separates materials that could become damaged by this
- ▶ Reduces or eliminates the transfer of vibrations between materials in contact.



Neolith HC System – Technical Features

According to Triton Building Products, Neolith HC System:

- ▶ Waterproof and resistant to liquids, with an absorption level of almost zero.
- ▶ Its hard surface makes it resistant to scratches and abrasion.
- ▶ It does not burn in contact with fire nor does it emit smoke or toxic substances when subjected to high temperatures.
- ▶ It does not give off any substances that are harmful to the environment (100% Natural).
- ▶ Being 100% natural, its colors do not fade away when being exposed to sunlight or other extreme weather conditions.
- ▶ It has a high shear rate, making it resistant to heavy loads and pressure.

Neolith HC System – Youtube Videos



<https://www.youtube.com/watch?v=rXfiZLvG1Ak>

Neolith HC System – Finished look video



<https://www.youtube.com/watch?v=Mo-vLlx7-Lg>

Glass Curtain Wall Material – Case Study

West Midtown Ferry Terminal

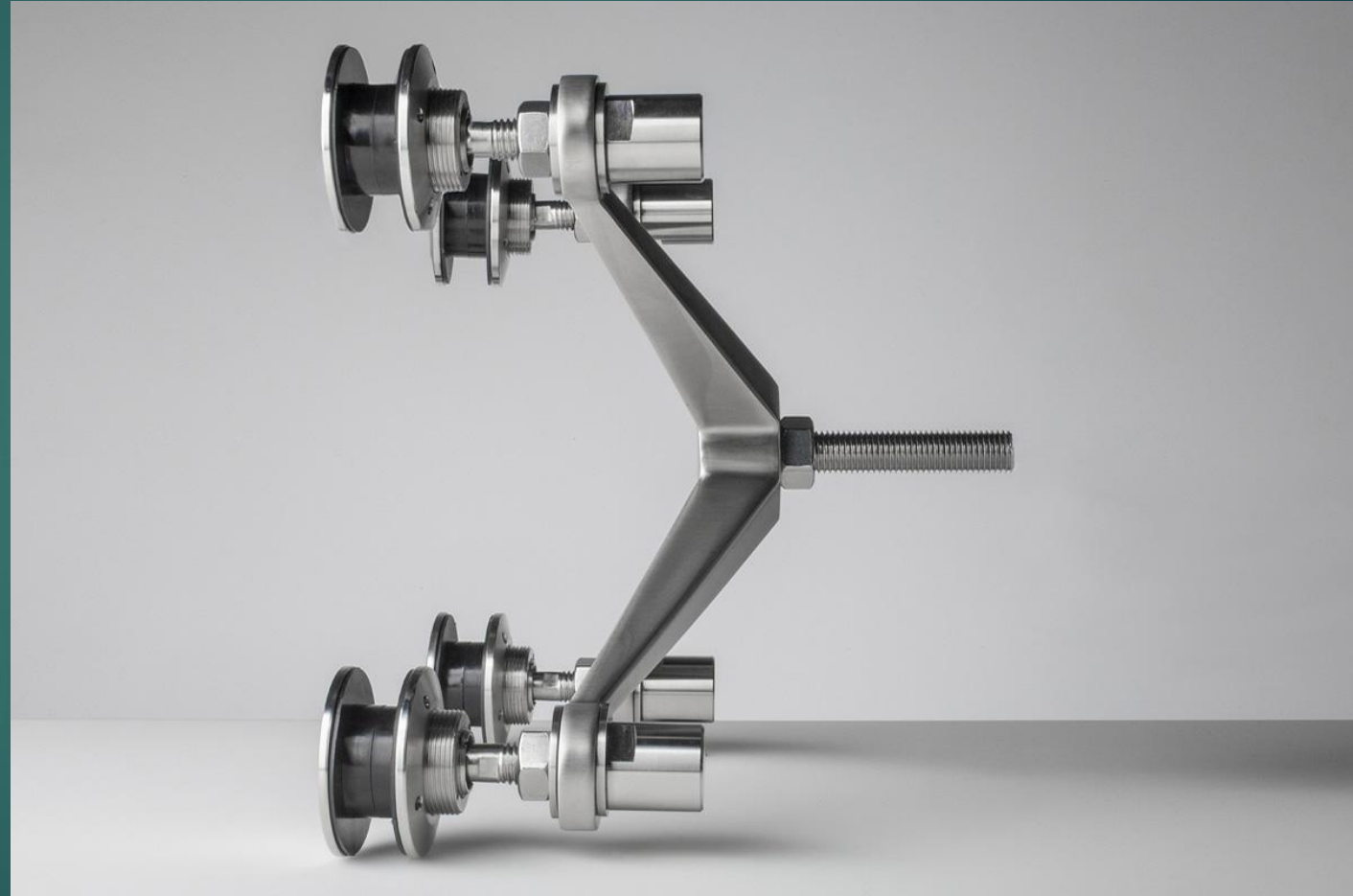
Located: 12th Ave, New York, NY

Designed By: William Nicholas
Bedouva + Associates

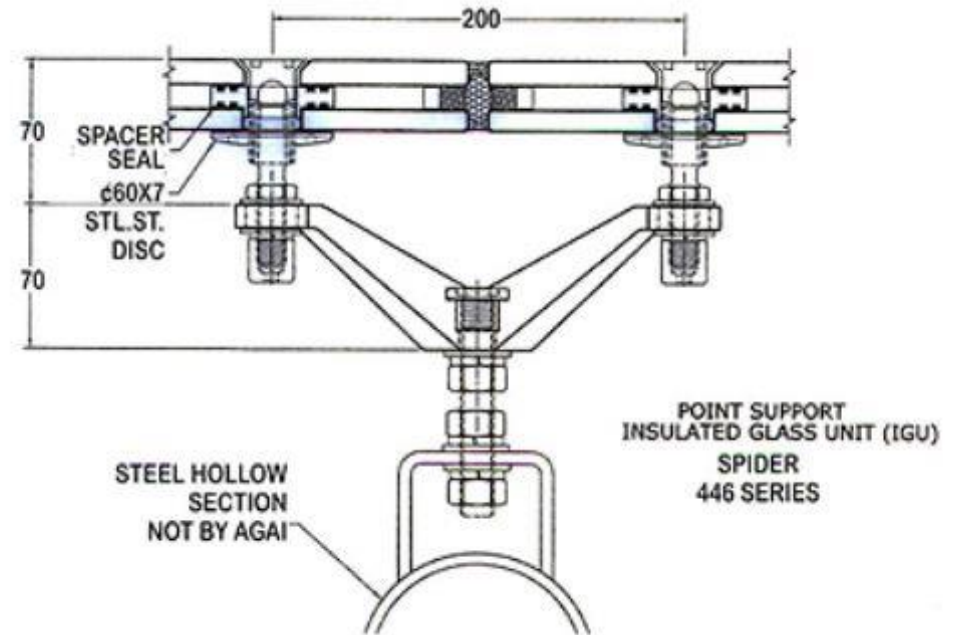
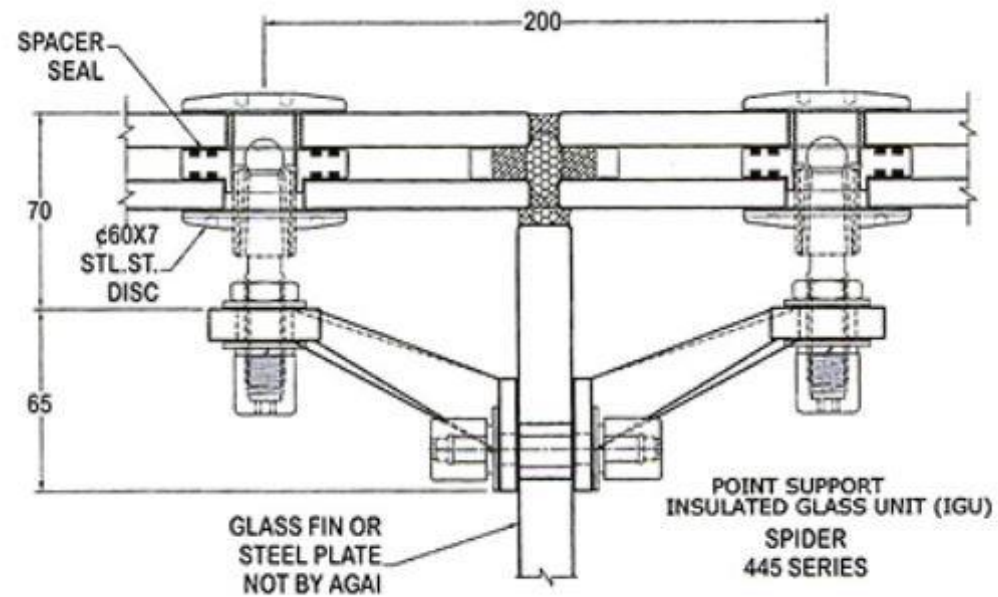


Glass Curtain Wall Material – Spider Glazing System

This is the most popular Pilkington Planar™ fitting which eliminates the need for spring plates and allows absorption of live loads and thermal expansion by rotation round a steel pin connected to the back-up structure. The fitting can also be articulated to allow use in faceted façades.



Spider Glazing System Detail



Spider Glazing System – YouTube video

