
Opaque Facade System/ Curtain wall System

Group 2-Jovany Cumbe



Opaque Facade System

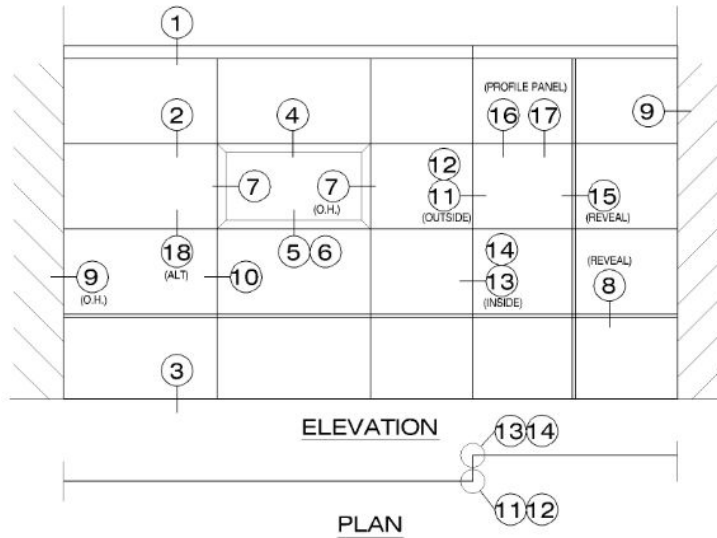
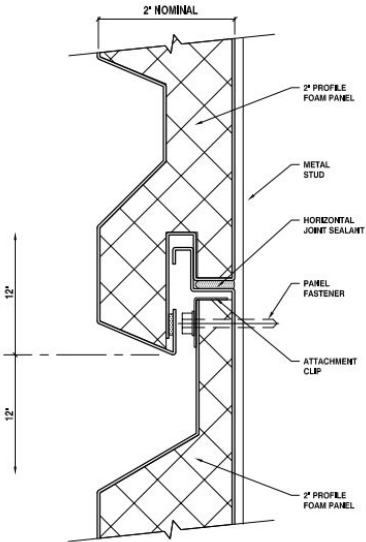
GTCC Health & Technologies Building

FM-200 Insulated
Metal Panels
(Rainscreen Style) →

Displayed is the Metal
Panel System in Use



Details



The FM-200 Series is a rain screen style system best used when high R-Value or noise deadening is required. Panels tested to R-Value = 14 (7 per inch of depth). Laminated foam panels are well suited for projects needing large panels with long, smooth expanses. The FM-200 is best when a crisp aesthetic with no caulk lines and insulation qualities are desired.

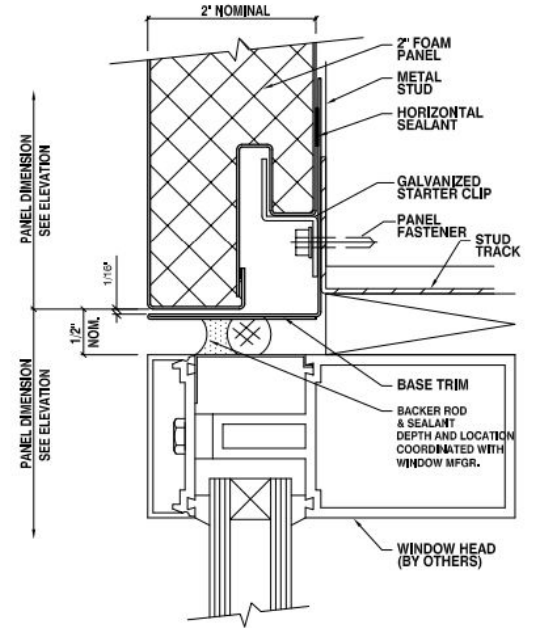
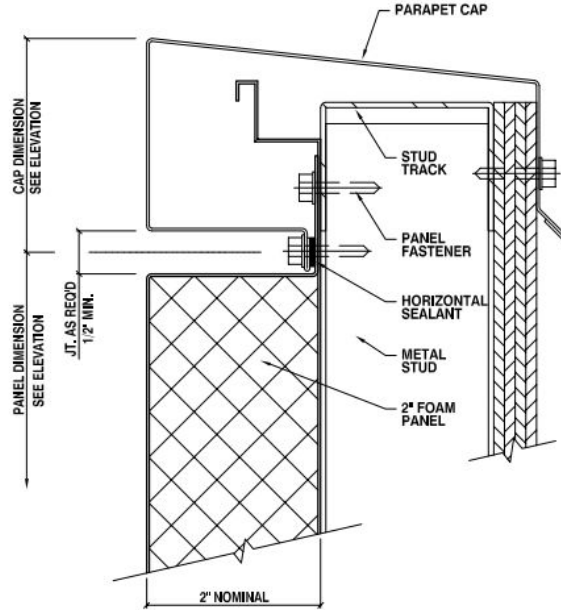
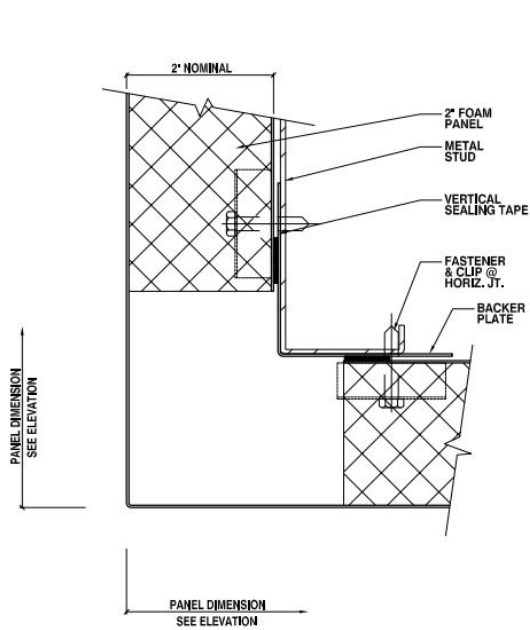
Details

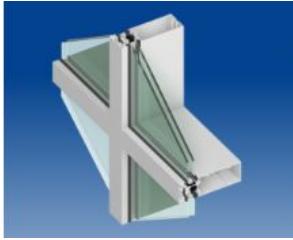
Construction Products, Inc.

Parapet Cap Detail

Construction Products, Inc.

Typical Window Head Detail





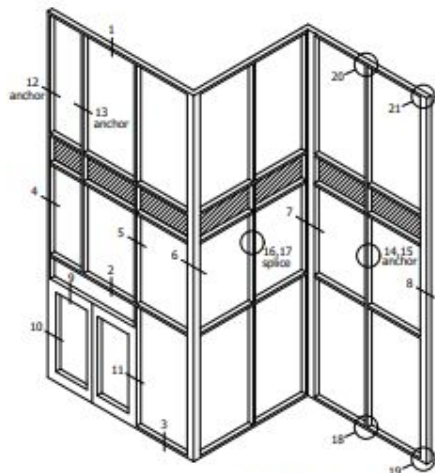
Curtain Wall System

915 Colorado Boulevard

400TU High Performance Curtain Wall System -> Displayed is the Curtain Wall System in use.



Details



TYPICAL ELEVATION

400TU ULTRA THERMAL CURTAIN WALL
 7 1/2" BACK MEMBER, DUAL GLAZE, SCREW SPLINE
 ALUMINUM PRESSURE PLATE
 S:\Engineering\ENGINEERING DRAWINGS\Details\299) TU400

The 400TU Series has a 2-1/2" face, and offers screw-spline or shear clip assembly. The pressure bar system can be stick fabricated, or assembled into "ladders" at your shop for field glazing.

Face Width:	Overall Depths:	Glass:
2-1/2"	6" to 10"	1" (1/4" to 1-3/4")

U-Value**:	CRF:	Acoustic:
U-Value Table	CRF-Value	Dual Glazed: 38 STC, 32 OITC Triple Glazed: 41 STC, 30 OITC

Air Infiltration:	Water Infiltration:	Structural:
0.06 CFM / Ft.2 @ 6.24 PSF	15 PSF - Static 15 PSF - Dynamic	40 PSF Design 60 PSF Overload

Extra sources

<https://www.youtube.com/watch?v=P4kwjibryg8>

<https://protean.com/docs/Protean-FM-200-PDS.pdf>

<https://www.tubeliteinc.com/wp-content/uploads/2019/08/400TU-Spec-031418-web.pdf>
