



# Materials Case Studies


---

Albijon Hoxhaj

Group:

Arch 2431 Spring 2020

Professor Sherman



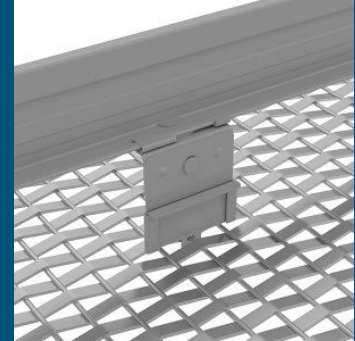
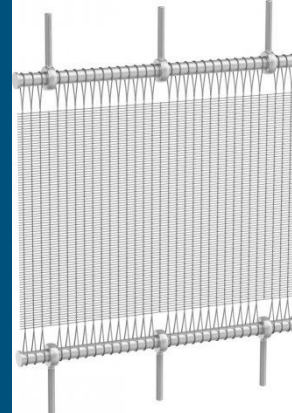
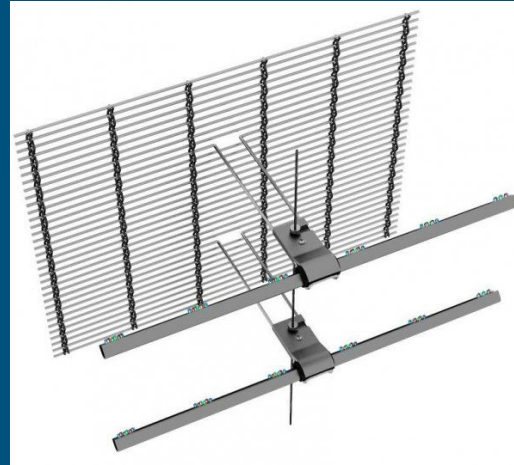
# Metal Fabric Case Study

---

**Thermal Properties** - Metal Fabric is used to provide protection from the sun for open space or on buildings in warmer climates.

**Structural**- Because of the versatility of metal fiber and the customization of the metal fiber there are many.

**Waterproofing**- Metal Fiber is made water resistant to protect from rusting and weathering



# Metal Fabric Case Study - Other Function

---

Acoustic Functionality - Metal Fiber panels can be used to dampen Sound within a building like libraries and so on

Etching - Manufactures can chemically change the color of the metal itself making it highly weather resistance and in doing so you can make large metal fabric surfaces into contrasted image.

Security Woven metals Can be added to between the posts of handrails to prevent objects from slipping between and down

Illumesh - A custom made metal fiber that reflects and disperses light

# Metal Fabric Case Study - Capital Gate Building

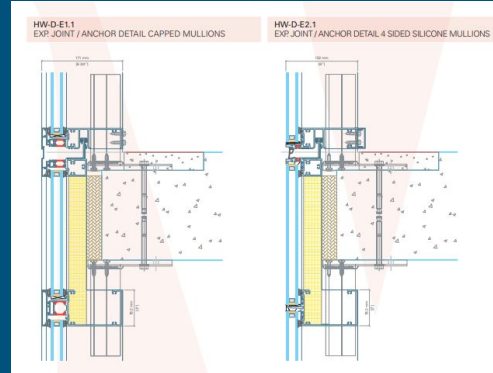


# SOTAWALL HYBRID-WALL

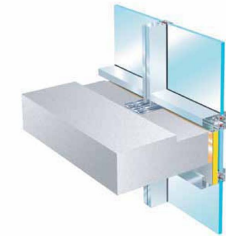
Thermal Properties - The thermal insulation may vary based on the type of glass but the frames have been tested so that the u value is not higher than 0.25 btu/hr/ft<sup>2</sup>-F.

Structural- the maximum deflection of these frames have been tested to not exceed 3/4" on any variation of the

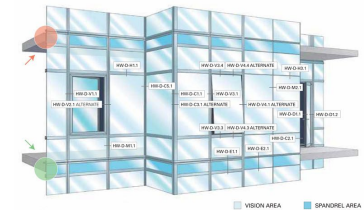
Waterproofing- Water will not get into the system assembly of the hybrid and have been built to resistance differential pressures of 15 psi



3D IMAGE OF SLAB EDGE ANCHOR DETAIL HYBRID-WALL@ UNDERSIDE OF SLAB



3D IMAGE OF SLAB EDGE ANCHOR DETAIL HYBRID-WALL@TOP OF SLAB



# NEW BALANCE HQ – BOSTON LANDING



# Resources

---

[-https://www.gkdmetalfabrics.com/applications/illumesh.html](https://www.gkdmetalfabrics.com/applications/illumesh.html)

<https://www.wglass.com/resources/>