

# Glass Curtain Walls And Opaque Facades

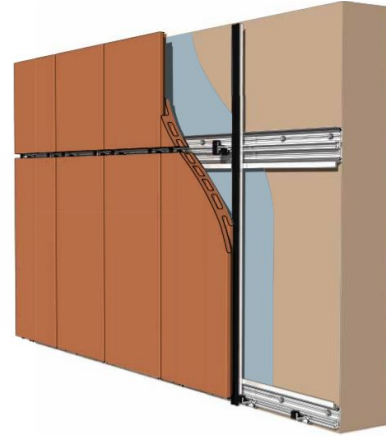
Eduardo Ramirez

Kayla Staton, Tenly Law, Jean-Paul



# ROBERT D. MORETON BUILDING





TERRACLAD™ SYSTEM DIAGRAM  
HORIZONTAL TRACK



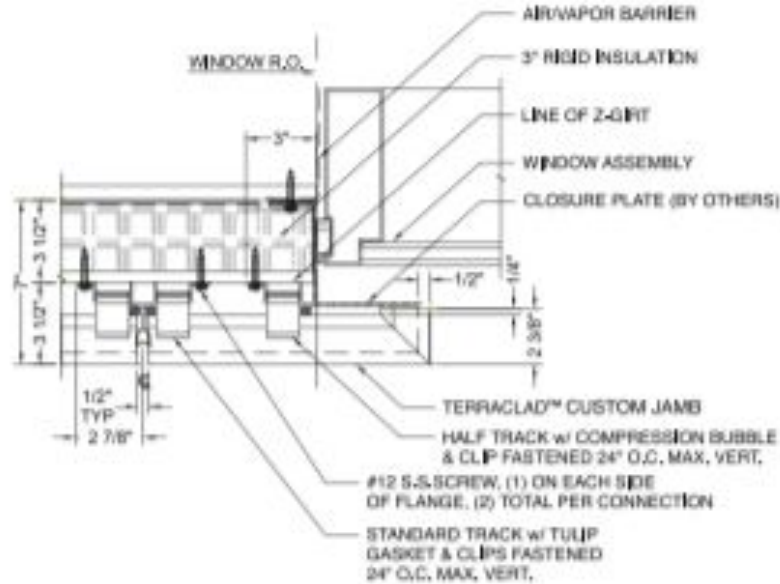
# Terracotta (TerraClad)

Ceramic panels installed on an aluminum framing system offer the durability of a masonry installation without the weight

The system is mortar-less so it allows for installation in any weather conditions which reduces maintenance costs

Replacement of a panel does not require the entire stacked bond to be removed

Pre-punched system speeds installation

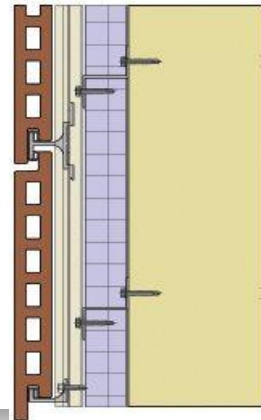
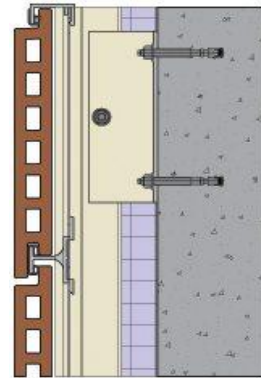
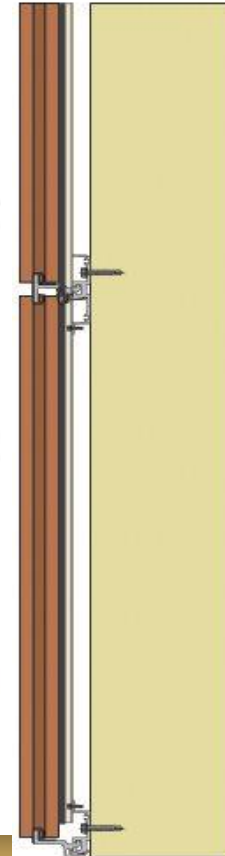


1 PLAN DETAIL - CUSTOM JAMB

# Cladding Methods

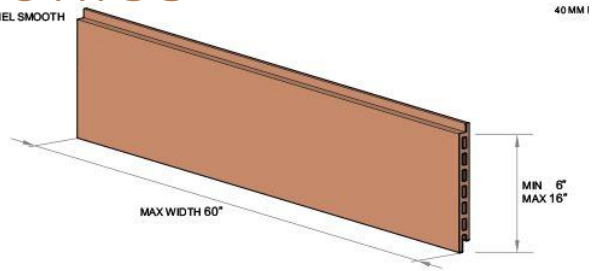
Horizontal Track

Vertical Track

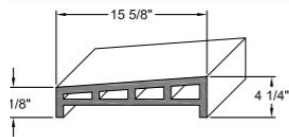
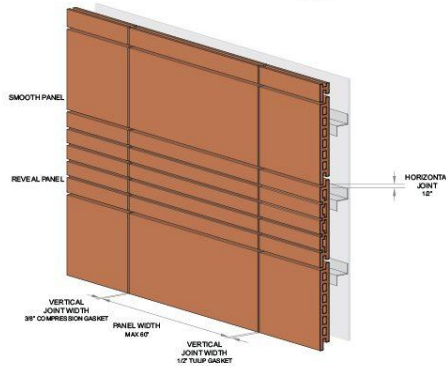


# Profiles

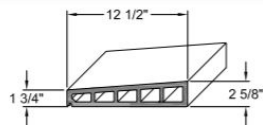
30 MM PANEL SMOOTH



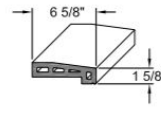
40 MM I



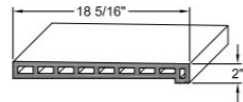
467-CP  
SPECIALTY - 15 5/8" COPING



1324-RS  
SPECIALTY - 12 1/2" COPING

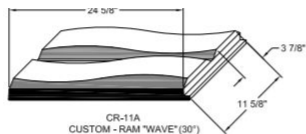
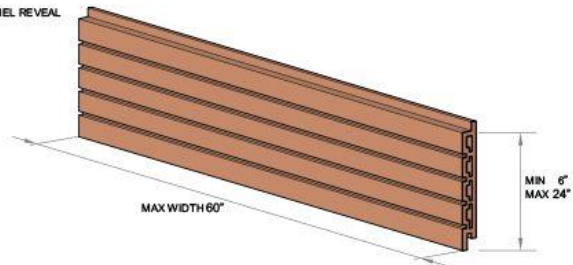


916-S  
SPECIALTY - 6-5/8" SILL

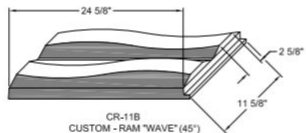


924-S  
SPECIALTY - 18 5/16" SILL

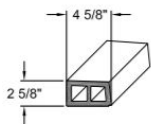
40 MM PANEL REVEAL



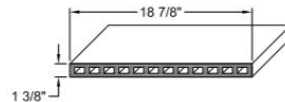
CR-11A  
CUSTOM - RAM "WAVE" (30°)



CR-11B  
CUSTOM - RAM "WAVE" (45°)



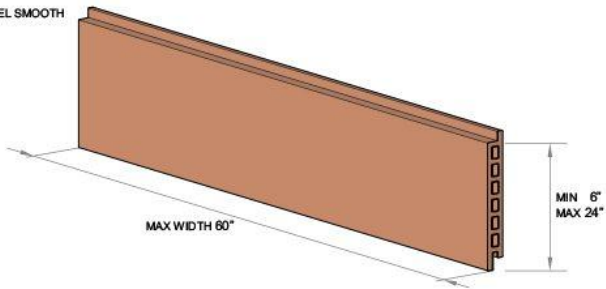
1251-RS  
SPECIALTY - 4 5/8" SILL



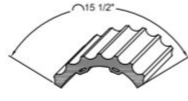
1233-RS  
SPECIALTY - 19" SILL/SOFFIT

6"  
16"

40 MM PANEL SMOOTH



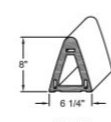
325-RS  
SPECIALTY - SMOOTH COLUMN



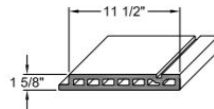
326-RS  
SPECIALTY - FLUTED COLUMN



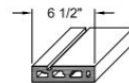
1211-RS  
SPECIALTY - 11 5/8" VERTICAL FIN



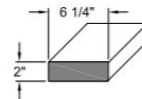
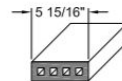
1217-RS  
SPECIALTY - 7 7/8" VERTICAL FIN



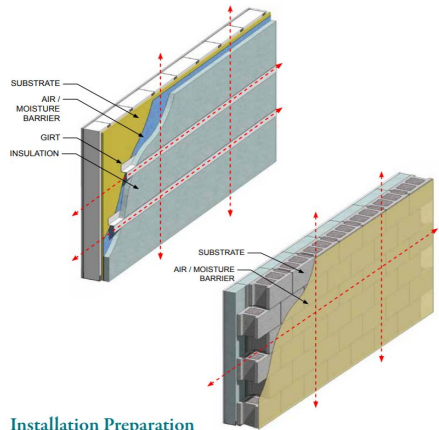
1322-RS  
CUSTOM - 12" FASCIA PANEL



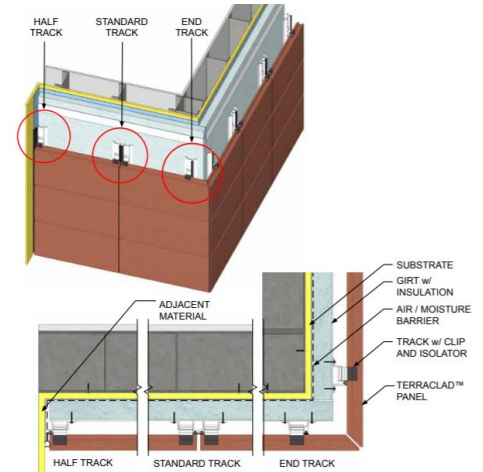
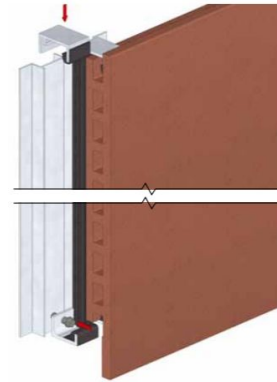
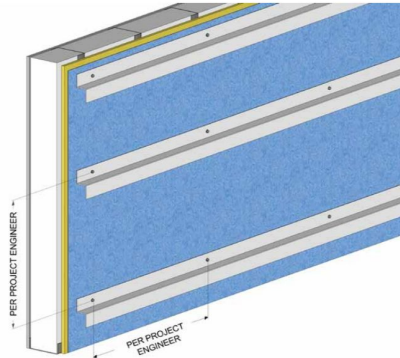
1245-RS  
SPECIALTY - 6 1/2" FASCIA



# Insulation

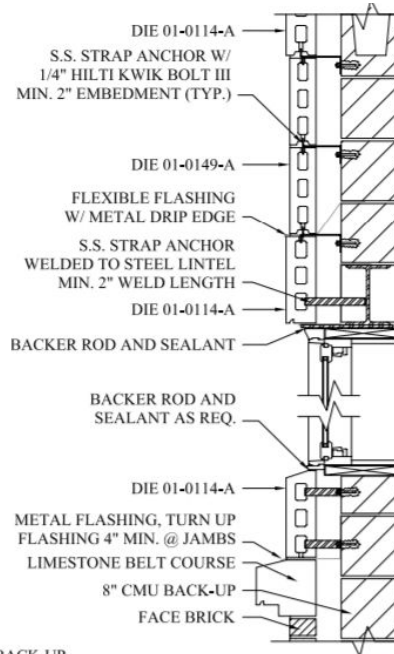
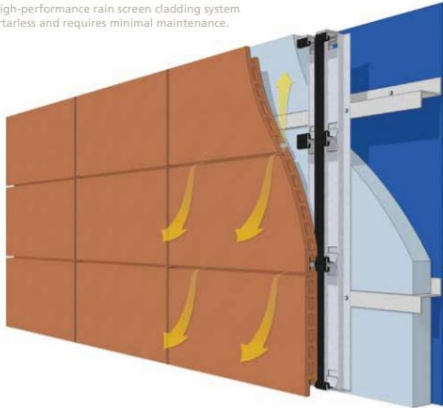


Installation Preparation



# Assembly

Our high-performance rain screen cladding system is mortarless and requires minimal maintenance.



## Simple to Install



Prepare site and install track



Install TerraClad™ panels



Continue building TerraClad™ courses

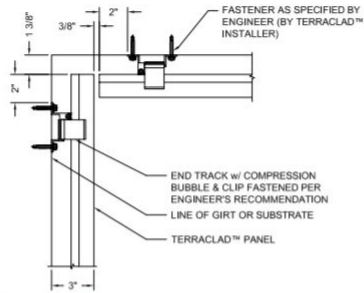


Replacing a panel is easy

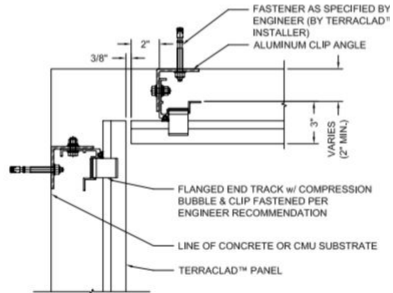
<https://vimeo.com/5195114>

# Details

## Inside Corner Details - Vertical Track

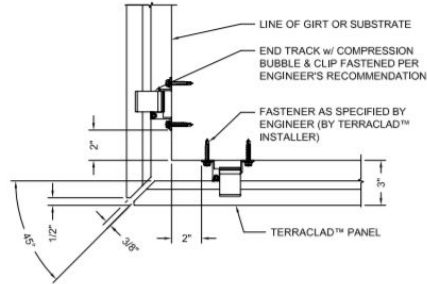


**Plan Detail**  
STANDARD END TRACK, 3/8" OPEN JOINT

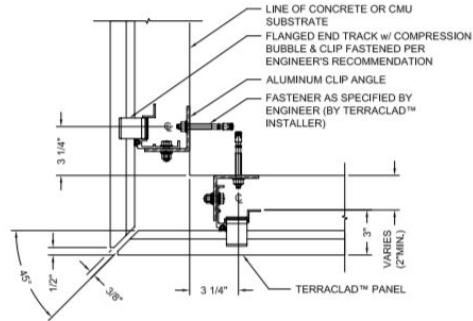


**Plan Detail**  
FLANGED END TRACK, 3/8" OPEN JOINT

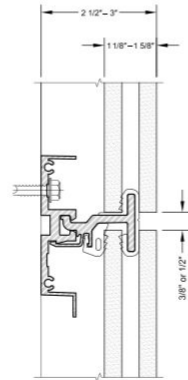
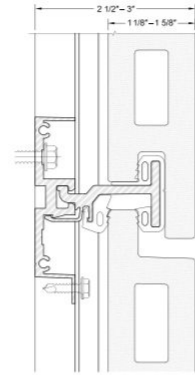
## Outside Corner Details - Vertical Track



**Plan Detail**  
STANDARD END TRACK, 3/8" QUIRK MITERED CORNER



**Plan Detail**  
FLANGED END TRACK, 3/8" QUIRK MITERED CORNER



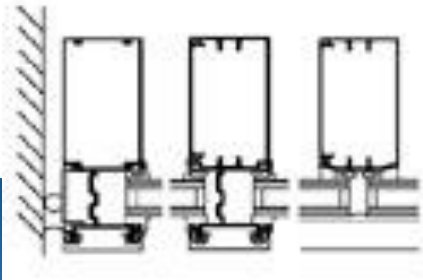


# Methodist Stone Oak Hospital

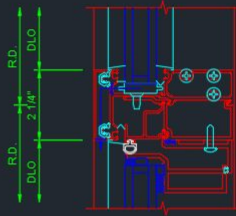
San Antonio, Texas, USA



# 2250 IG (Inside Glazed) Curtain Wall System

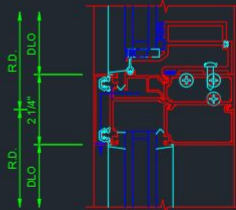


VENT HEAD

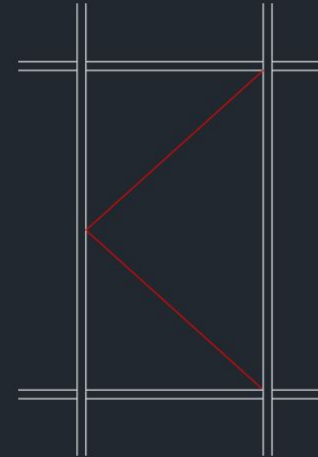


- 165115 INTERMEDIATE HORIZONTAL
- 165002 COVER
- 165166 GLASSVENT ADAPTER
- 028543 #12 x 1/2" B PHTF
- 164030 GLASSVENT ADAPTER
- 162081 GLASSVENT FRAME
- 028551 #10 x 3/4" AB PHTF
- 162086 GLASSVENT VENT

VENT SILL

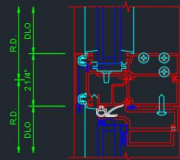


- 162086 GLASSVENT VENT
- 028551 #10 x 3/4" AB PHTF
- 162081 GLASSVENT FRAME
- 163031 GLASSVENT ADAPTER
- 165115 INTERMEDIATE HORIZONTAL
- 165002 COVER
- 165164 1" GLASS STOP



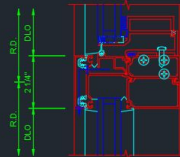
TYPICAL ELEVATION  
ELEVATION SCALE: 1/8" = 1'-0"

VENT HEAD

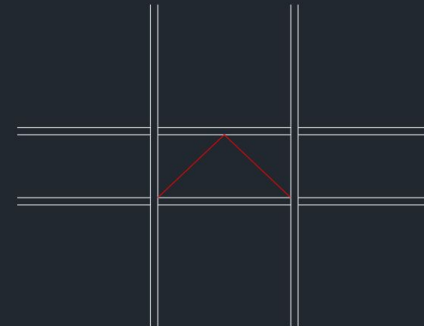


- 165115 INTERMEDIATE HORIZONTAL
- 165002 COVER
- 165166 GLASSVENT ADAPTER
- 028543 #12 x 1/2" B PHTF
- 164030 GLASSVENT ADAPTER
- 162081 GLASSVENT FRAME
- 028551 #10 x 3/4" AB PHTF
- 162086 GLASSVENT VENT
- 127265 WATER DEFLECTION GASKET

VENT SILL

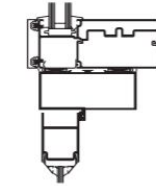
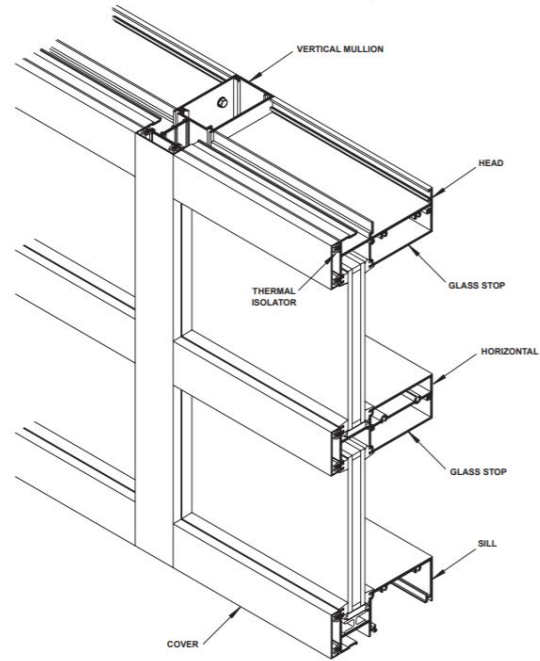


- 162086 GLASSVENT VENT
- 028551 #10 x 3/4" AB PHTF
- 162081 GLASSVENT FRAME
- 163031 GLASSVENT ADAPTER
- 165115 INTERMEDIATE HORIZONTAL
- 165002 COVER
- 165164 1" GLASS STOP



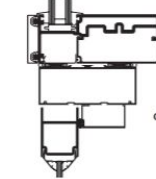
TYPICAL ELEVATION  
ELEVATION SCALE: 1/8" = 1'-0"

**TYPE "A" ASSEMBLY**  
Screw Spline for Ribbon Windows



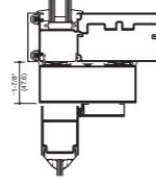
1

**TRANSOM BAR**  
BUTT HUNG OR  
OFFSET PIVOT WITH  
SURFACE CLOSER  
OR FLOOR CLOSER



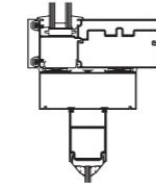
1A

**TRANSOM BAR**  
BUTT HUNG OR OFFSET PIVOT  
WITH SINGLE ACTING  
CONCEALED OVERHEAD CLOSER



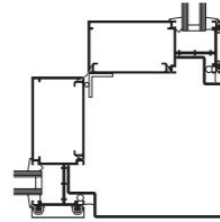
1B

**TRANSOM BAR**  
BUTT HUNG OR OFFSET PIVOT  
WITH LCN CONCEALED  
OVERHEAD CLOSER  
OR SURFACE CLOSER

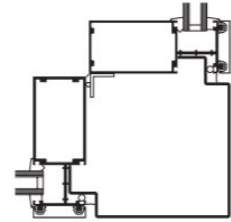


2

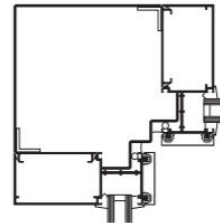
**TRANSOM BAR**  
CENTER HUNG  
CONCEALED OVERHEAD  
OR FLOOR CLOSER



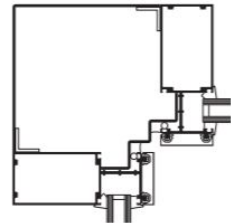
90° OUTSIDE CORNER  
SCREW SPLINE



90° OUTSIDE CORNER  
SHEAR BLOCK

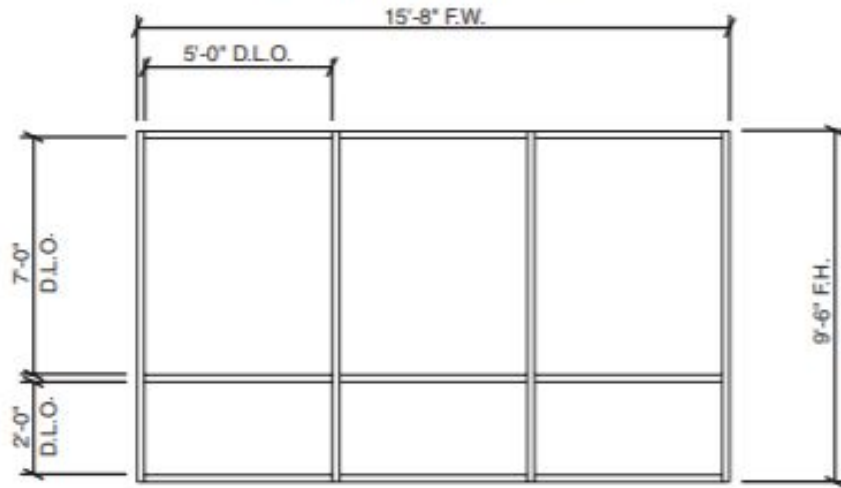


90° INSIDE CORNER  
SCREW SPLINE

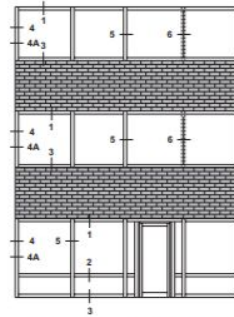


90° INSIDE CORNER  
SHEAR BLOCK

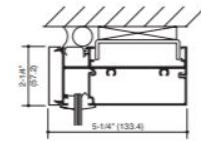
## Project Specific U-Factor Example Calculation



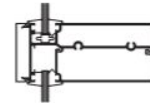
Example Glass U-Factor	= 0.42 Btu/(ft <sup>2</sup> ·h·°F)
Total Daylight (Vision) Area	= 3(5' x 7') + 3(5' x 2') = 135 ft <sup>2</sup>
Projected Total Area	= 15'-8" x 9'-6" = 148.83 ft <sup>2</sup>
Percent of Vision Glass	= (Total Daylight Area ÷ Projected Total Area) × 100 = (135 ÷ 148.83)100 = 91%



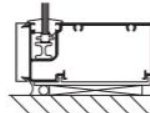
ELEVATION IS NUMBER KEYED TO DETAILS



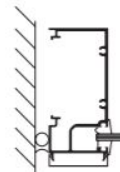
1



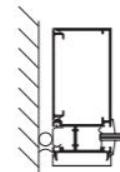
2



3

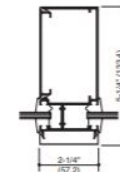


4



4A

Structural Silicone Sealant  
(by Others)\*



5



6

# Resources

[https://www.bostonvalley.com/downloads/BVTC.install-guide.Panels.FINAL\\_SCREEN.pdf](https://www.bostonvalley.com/downloads/BVTC.install-guide.Panels.FINAL_SCREEN.pdf)

<https://bostonvalley.com/wp-content/uploads/2015/03/2015.03-Terraclad-Marketing-Catalog.pdf>

[https://bostonvalley.com/downloads/BVTC.TerraClad\\_book-web.pdf](https://bostonvalley.com/downloads/BVTC.TerraClad_book-web.pdf)

[https://www.kawneer.com/kawneer/north\\_america/en/product.asp?prod\\_id=1808&desc=inside-glazed-curtain-wall-system](https://www.kawneer.com/kawneer/north_america/en/product.asp?prod_id=1808&desc=inside-glazed-curtain-wall-system)

[https://www.kawneer.com/kawneer/north\\_america/en/products/project\\_detail.asp?project=methodist\\_stone\\_hospital&bus=north\\_america&pc=Healthcare](https://www.kawneer.com/kawneer/north_america/en/products/project_detail.asp?project=methodist_stone_hospital&bus=north_america&pc=Healthcare)

[https://www.kawneer.com/kawneer/north\\_america/catalog/97911/ADMD150EN.pdf](https://www.kawneer.com/kawneer/north_america/catalog/97911/ADMD150EN.pdf)