

Facade material presentation

Arch2431 BTech 3 SP2020

Prof.King

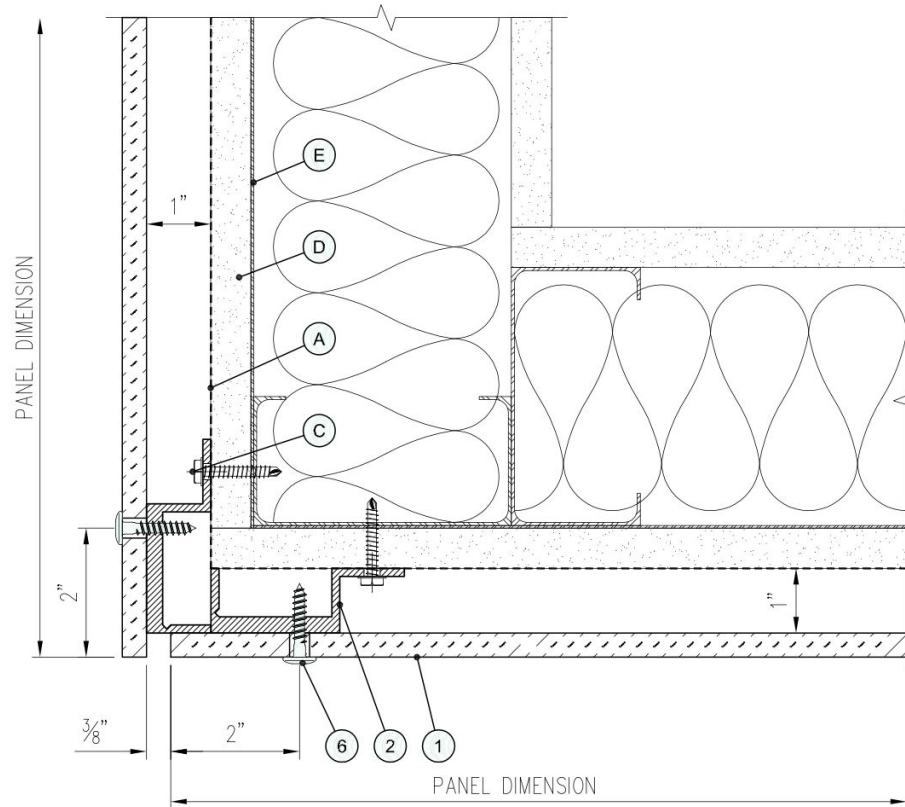
By: Sajida Hamdan

Team mates: Tea Khabelashvili, Meifen



Opaque Material Case Study NYX HOTEL Madrid Spain

Detail Drawing



No.	DESCRIPTION
1	TRESPA METEON PANEL ($\frac{3}{8}$ ", $\frac{3}{8}$ ", $\frac{1}{2}$ ") *
2	J-CHANNEL (110-000)
3	HAT-CHANNEL (110-001) -NOT USED
4	ADJUSTABLE BRACKET (200-003) -NOT USED
5	FIXED BRACKET (200-004) -NOT USED
6	PANEL FASTENER (100-000)
7	T U ANCHOR (200-005) -NOT USED
8	RAIL ANCHOR (000-004) -NOT USED
9	RAIL (200-000) -NOT USED
10	SYSTEM CLOSURE (210-000) -NOT USED
11	VENT SCREEN (110-002) -NOT USED
12	CLIP ANCHOR (000-006) -NOT USED
13	CORNER CLOSURE (000-003) -NOT USED
14	JOINT CLOSURE (000-002) -NOT USED

A	APPROVED WRB (REF. COVER PAGE)
B	MINERAL WOOL (MATERIAL SPECIFICATION AVAILABLE UPON REQUEST/REF. COVER PAGE) -NOT USED
C	CHANNEL ANCHOR
D	SHEATHING
E	STEEL BACKING PLATE

* TRESPA MANUFACTURES TRESPA METEON PANELS ONLY.
PLEASE CONSULT WITH YOUR LOCAL SALES REPRESENTATIVE FOR INFORMATION REGARDING THE SOURCE OF SUPPLY FOR SPECIFIC COMPONENTS NOT SUPPLIED BY TNA AND FOLLOW THE MANUFACTURER'S GUIDELINES.

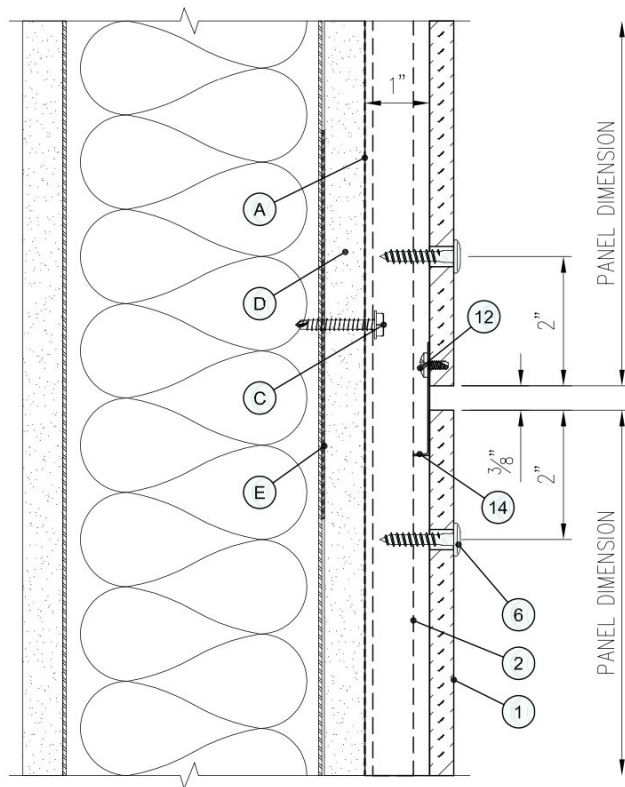
THESE SHOP DRAWINGS AND TNA'S RECOMMENDATIONS DO NOT ADDRESS THE SUPPORT WALL CONSTRUCTION, STRUCTURAL DETAILS OF THE SUBSTRUCTURE'S ANCHORAGE TO THE SUPPORT WALL OR OTHER DESIGN ELEMENTS. DUE TO THE VARIETY OF CONSTRUCTION CONDITIONS THAT MAY BE PRESENT, TNA IS NOT RESPONSIBLE AND DOES NOT MAKE ANY RECOMMENDATIONS RELATED TO SUPPORT WALL CONSTRUCTION, OR ANCHORAGE OF THE SUBSTRUCTURE TO THE SUPPORT WALL ELEMENTS; TNA STRONGLY ADVISES THAT THESE CONNECTIONS BE DESIGNED BY A LICENSED PROFESSIONAL, IN ACCORDANCE WITH APPLICABLE BUILDING CODES, PRODUCT TEST REPORTS, AND OTHER INSTALLATION SUPPORT DOCUMENTS, AS APPLICABLE.

FOR PROJECTS REQUIRING COMPLIANCE WITH THE NFPA 285 FIRE TEST, PLEASE REFER TO OUR WEBSITE FOR SPECIFIC DESIGN DETAILS FOR THE TNA METEON FIXING SYSTEMS THAT MEET THE NFPA 285 PERFORMANCE CRITERIA. FOR PROJECTS REQUIRING COMPLIANCE WITH CANADIAN ULC S-134, PLEASE CALL OUR TECHNICAL SERVICES DEPARTMENT FOR MORE INFORMATION.

SHIMMING SHOULD BE IN ACCORDANCE WITH GENERALLY ACCEPTED CURTAIN WALL STANDARDS $\frac{1}{4}$ " : 20'

TRESPA <small>Trespa North America, Ltd. 62 Greene Street (Ground Floor) New York, NY 10012 Phone: 800-487-3712 Fax: 866-238-3499 www.trespa.com/no</small>	TITLE:	DESIGN BY:	DATE:
	6 OUTSIDE CORNER	AT	03.21.2013
SYSTEM	SCALE:	DETAIL:	APPROVED BY:
TS110-285	$1/2" = 1"$	6	SG
NFPA 285 COMPLIANT TRESPA FIXING SYSTEM			SHEET:
			9 OF 19

Detail Drawing



No.	DESCRIPTION
1	TRESPA METEON PANEL ($\frac{3}{8}$, $\frac{1}{2}$, $\frac{1}{2}$) *
2	J-CHANNEL (110-000)
3	HAT-CHANNEL (110-001) -NOT USED
4	ADJUSTABLE BRACKET (200-003) -NOT USED
5	FIXED BRACKET (200-004) -NOT USED
6	PANEL FASTENER (100-000)
7	T U ANCHOR (200-005) -NOT USED
8	RAIL ANCHOR (000-004) -NOT USED
9	RAIL (200-000) -NOT USED
10	SYSTEM CLOSURE (210-000) -NOT USED
11	VENT SCREEN (110-002) -NOT USED
12	CLIP ANCHOR (000-006)
13	CORNER CLOSURE (000-003) -NOT USED
14	JOINT CLOSURE (000-002)

A	APPROVED WRB (REF. COVER PAGE)
B	MINERAL WOOL (MATERIAL SPECIFICATION AVAILABLE UPON REQUEST)(REF. COVER PAGE) -NOT USED
C	CHANNEL ANCHOR
D	SHEATHING
E	STEEL BACKING PLATE

* TRESPA MANUFACTURES TRESPA METEON PANELS ONLY.

PLEASE CONSULT WITH YOUR LOCAL SALES REPRESENTATIVE FOR INFORMATION REGARDING THE SOURCE OF SUPPLY FOR SPECIFIC COMPONENTS NOT SUPPLIED BY TNA AND FOLLOW THE MANUFACTURER'S GUIDELINES.

THESE SHOP DRAWINGS AND TNA'S RECOMMENDATIONS DO NOT ADDRESS THE SUPPORT WALL CONSTRUCTION, STRUCTURAL DETAILS OF THE SUBSTRUCTURE'S ANCHORAGE TO THE SUPPORT WALL OR OTHER DESIGN ELEMENTS. DUE TO THE VARIETY OF CONSTRUCTION CONDITIONS THAT MAY BE PRESENT, TNA IS NOT RESPONSIBLE AND DOES NOT MAKE ANY RECOMMENDATIONS RELATED TO SUPPORT WALL CONSTRUCTION, OR ANCHORAGE OF THE SUBSTRUCTURE TO THE SUPPORT WALL ELEMENTS. TNA STRONGLY ADVISES THAT THESE CONNECTIONS BE DESIGNED BY A LICENSED PROFESSIONAL, IN ACCORDANCE WITH APPLICABLE BUILDING CODES, PRODUCT TEST REPORTS, AND OTHER INSTALLATION SUPPORT DOCUMENTS, AS APPLICABLE.

FOR PROJECTS REQUIRING COMPLIANCE WITH THE NFPA 285 FIRE TEST, PLEASE REFER TO OUR WEBSITE FOR SPECIFIC DESIGN DETAILS FOR THE TNA METEON FIXING SYSTEMS THAT MEET THE NFPA 285 PERFORMANCE CRITERIA. FOR PROJECTS REQUIRING COMPLIANCE WITH CANADIAN ULC S-134, PLEASE CALL OUR TECHNICAL SERVICES DEPARTMENT FOR MORE INFORMATION.

SHIMMING SHOULD BE IN ACCORDANCE WITH GENERALLY ACCEPTED CURTAIN WALL STANDARDS $\frac{1}{4}$ " : 20'

 <small>Trepro North America, Ltd. #2 Greene Street (Ground Floor) New York, NY 10002 Phone: 800-687-5172 Fax: 866-298-3499 www.trepro.com/no</small>	TITLE:	10a HORIZONTAL PANEL JOINT	DESIGN BY:	AT	DATE:	03.21.2013
	SYSTEM	TS110-285 NFPA 285 COMPLIANT TRESPA FIXING SYSTEM	SCALE:	1/2" = 1"	DETAIL:	10a
			APPROVED BY:	SG	SHEET:	15 OF 19

Material video

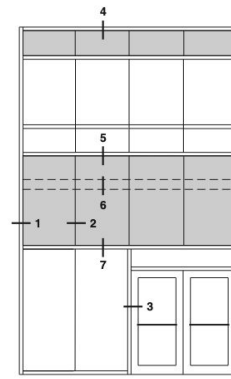
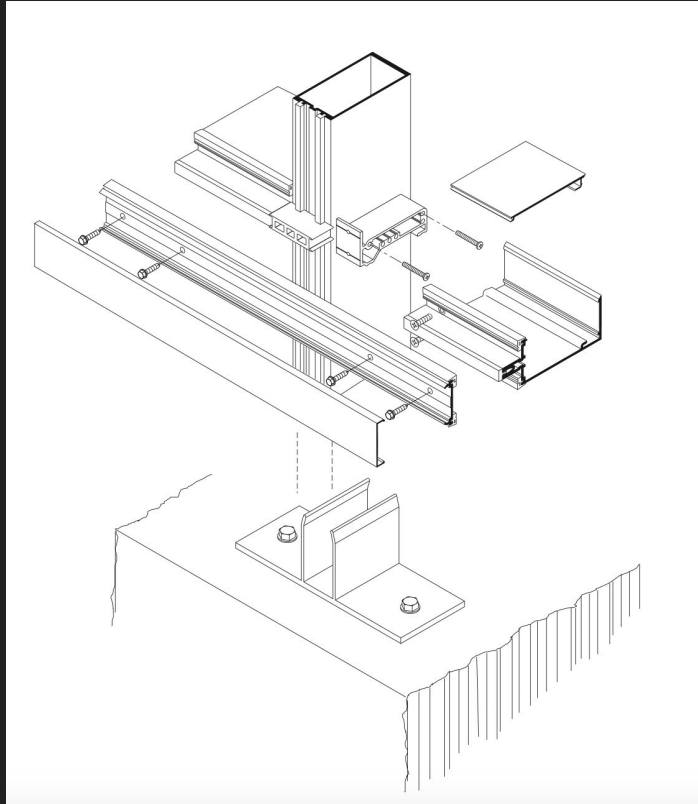
Trespa Siding System

https://www.youtube.com/watch?v=zze83QMX2_U



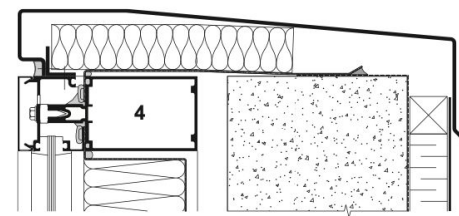
Glass Curtain Wall Case Study

Curtain wall detail

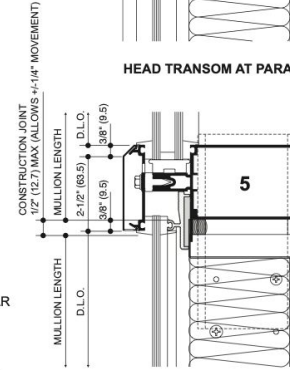


ELEVATION IS NUMBER KEYED TO DETAILS

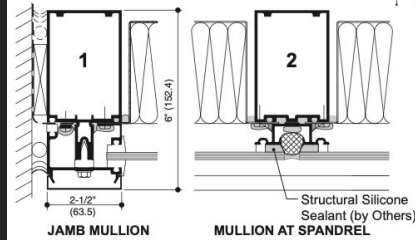
NOTE: 6" SYSTEM SHOWN, 7-1/2" SYSTEM SIMILAR



HEAD TRANSOM AT PARAPET FLASHING

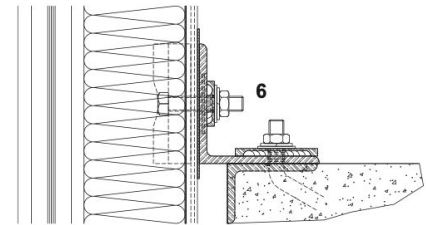


EXPANSION JOINT

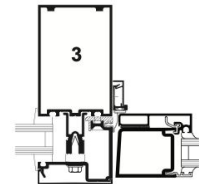


JAMB MULLION AT SPANDREL
(With vapor barrier tie-in)

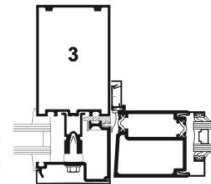
MULLION AT SPANDREL
Structural Silicone Sealant (by Others)*



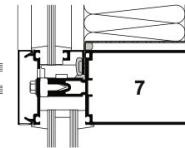
TYPICAL DEADLOAD ANCHOR



THERMALLY BROKEN DOOR ADAPTOR FOR INSULCLAD DOORS



AA® 250 THERMAL ENTRANCE



TRANSOM - SPANDREL OVER VISION

Material brochure

https://www.kawneer.com/kawneer/north_america/catalog/97911/ADMD060EN.pdf