



# Glass Curtain Walls And Opaque Facades

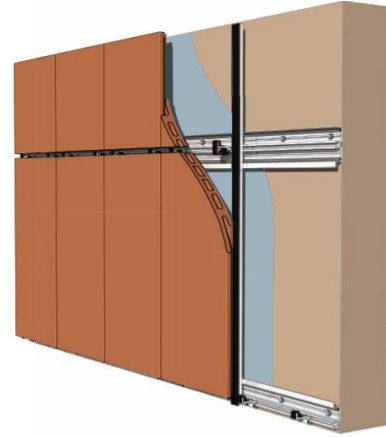
Eduardo Ramirez

Kayla Staton, Tenly Law, Jean-Paul



# ROBERT D. MORETON BUILDING





TERRACLAD™ SYSTEM DIAGRAM  
HORIZONTAL TRACK



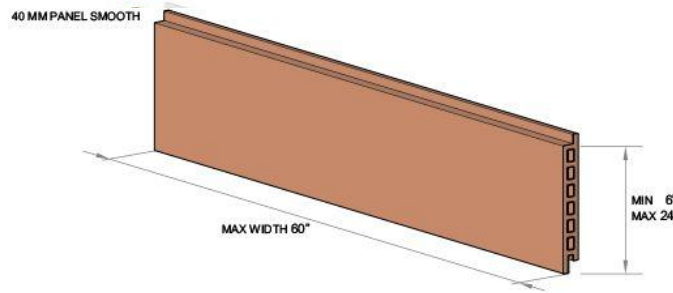
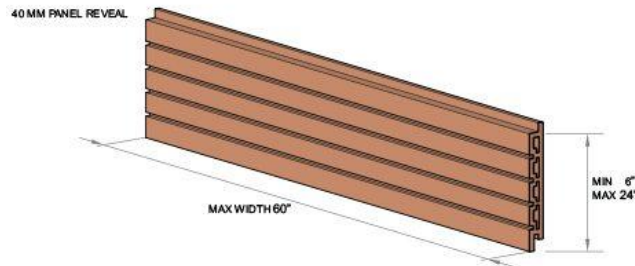
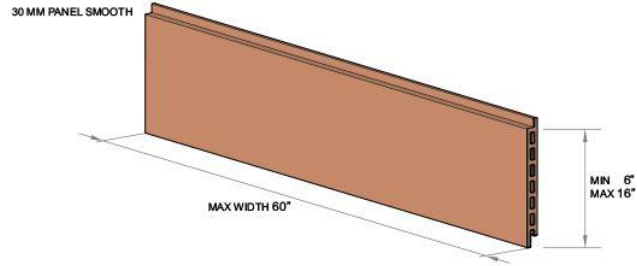
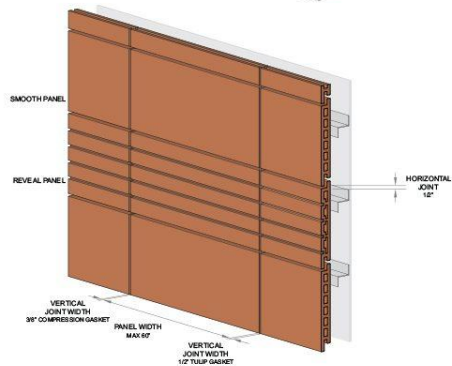
# Terracotta (TerraClad)

Ceramic panels installed on an aluminum framing system offer the durability of a masonry installation without the weight

The system is mortar-less so it allows for installation in any weather conditions which reduces maintenance costs

Replacement of a panel does not require the entire stacked bond to be removed

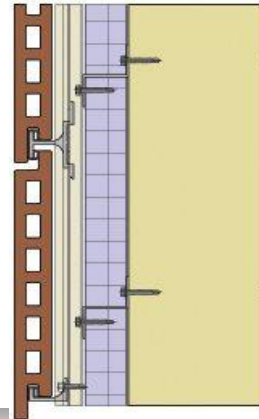
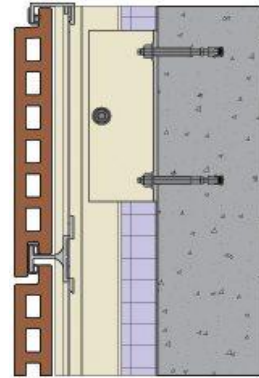
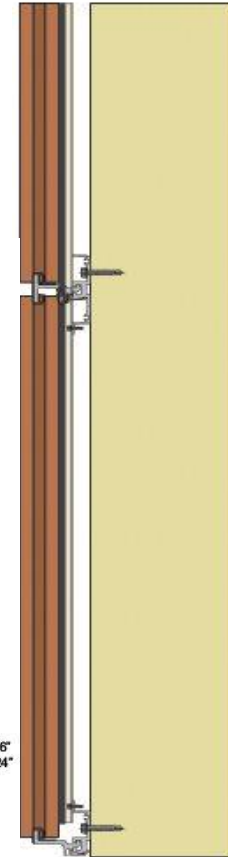
Pre-punched system speeds installation



# Cladding Methods

Horizontal Track

Vertical Track



Our high-performance rain screen cladding system is mortarless and requires minimal maintenance.



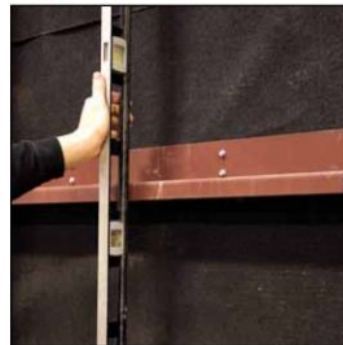
## Rain Screen Principles

The TerraClad™ system creates a ventilated cavity wall, mitigating mold and mildew growth. The ship-lap joint helps prevent wind-driven rain and snow from reaching the structural wall while also allowing the cavity to breathe and panels to dry faster. Gaskets and isolators provide a snug fit between panels and the framing system to prevent wind induced rattle and allow for movement of the aluminum framing system due to thermal expansion.

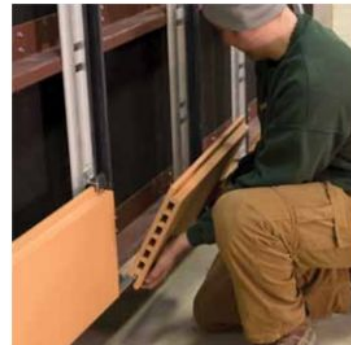
### Benefits of the TerraClad™ System Design

- Ceramic panels installed on an aluminum framing system offer the durability of a masonry installation without the weight
- Continuous insulation outboard of the primary wall system increases the thermal performance of the building envelope
- A mortarless system allows for installation in any weather condition and reduces maintenance costs associated with re-pointing
- LEED credit opportunities
- Abundant profile, color and finish opportunities available

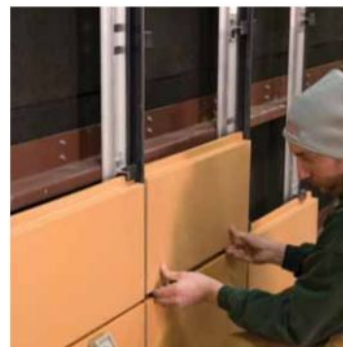
## Simple to Install



Prepare site and install track



Install TerraClad™ panels



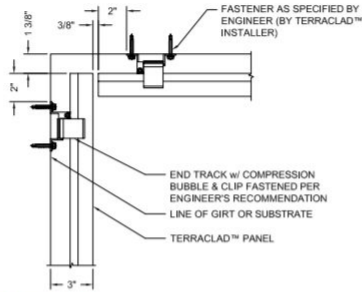
Continue building TerraClad™ courses



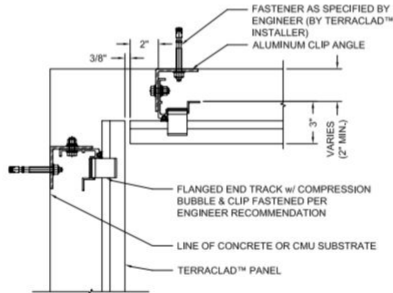
Replacing a panel is easy



### Inside Corner Details - Vertical Track

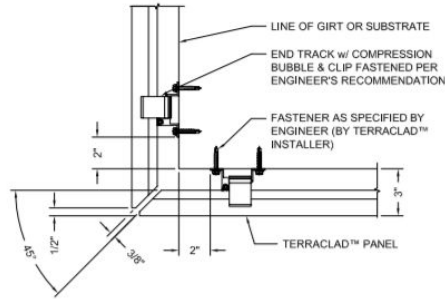


**Plan Detail**  
STANDARD END TRACK, 3/8" OPEN JOINT

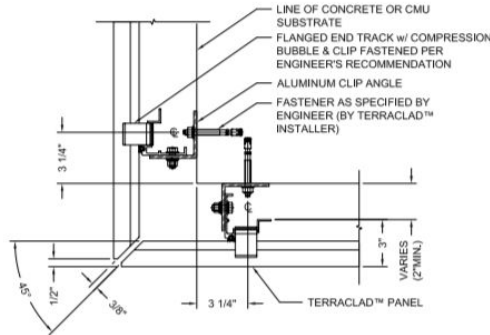


**Plan Detail**  
FLANGED END TRACK, 3/8" OPEN JOINT

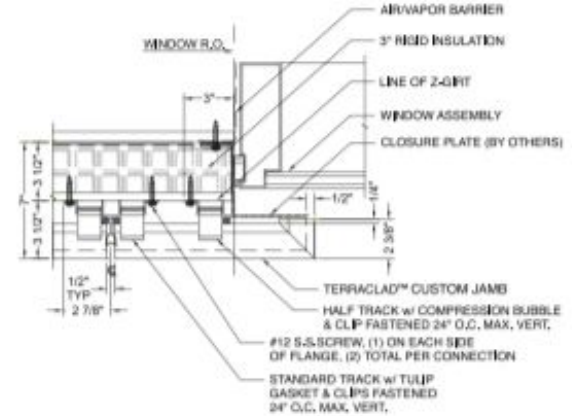
### Outside Corner Details - Vertical Track



**Plan Detail**  
STANDARD END TRACK, 3/8" QUIRK MITERED CORNER



**Plan Detail**  
FLANGED END TRACK, 3/8" QUIRK MITERED CORNER



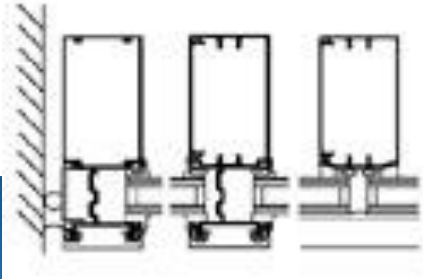
**1 PLAN DETAIL - CUSTOM JAMB**

# Methodist Stone Oak Hospital

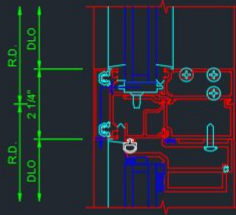
San Antonio, Texas, USA



# 2250 IG (Inside Glazed) Curtain Wall System

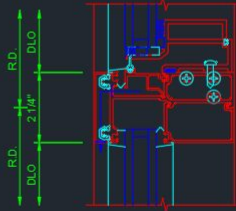


VENT HEAD

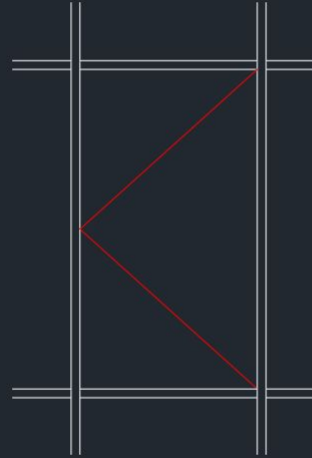


- 165115 INTERMEDIATE HORIZONTAL
- 165002 COVER
- 165166 GLASSVENT ADAPTER
- 028543 #12 x 1/2" B PHTF
- 164030 GLASSVENT ADAPTER
- 162081 GLASSVENT FRAME
- 028551 #10 x 3/4" AB PHTF
- 162086 GLASSVENT VENT

VENT SILL

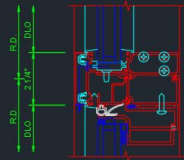


- 162086 GLASSVENT VENT
- 028551 #10 x 3/4" AB PHTF
- 162081 GLASSVENT FRAME
- 163031 GLASSVENT ADAPTER
- 165115 INTERMEDIATE HORIZONTAL
- 165002 COVER
- 165164 1" GLASS STOP



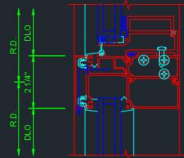
TYPICAL ELEVATION  
ELEVATION SCALE: 1/8" = 1'-0"

VENT HEAD

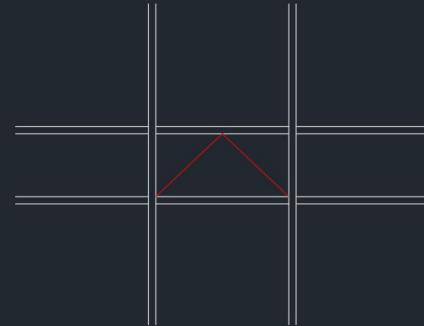


- 165115 INTERMEDIATE HORIZONTAL
- 165002 COVER
- 165166 GLASSVENT ADAPTER
- 028543 #12 x 1/2" B PHTF
- 164030 GLASSVENT ADAPTER
- 162081 GLASSVENT FRAME
- 028551 #10 x 3/4" AB PHTF
- 162086 GLASSVENT VENT
- 127265 WATER DEFLECTION GASKET

VENT SILL



- 162086 GLASSVENT VENT
- 028551 #10 x 3/4" AB PHTF
- 162081 GLASSVENT FRAME
- 163031 GLASSVENT ADAPTER
- 165115 INTERMEDIATE HORIZONTAL
- 165002 COVER
- 165164 1" GLASS STOP



TYPICAL ELEVATION  
ELEVATION SCALE: 1/8" = 1'-0"