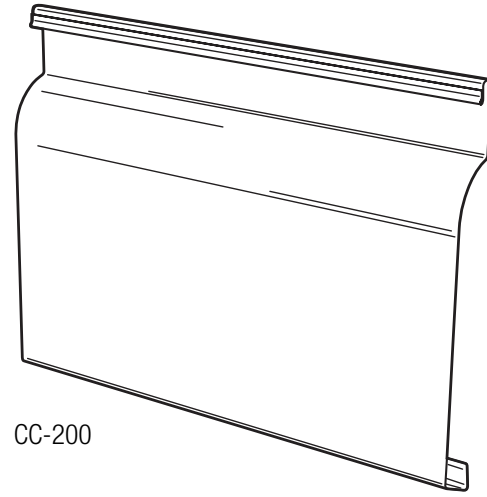


## Description

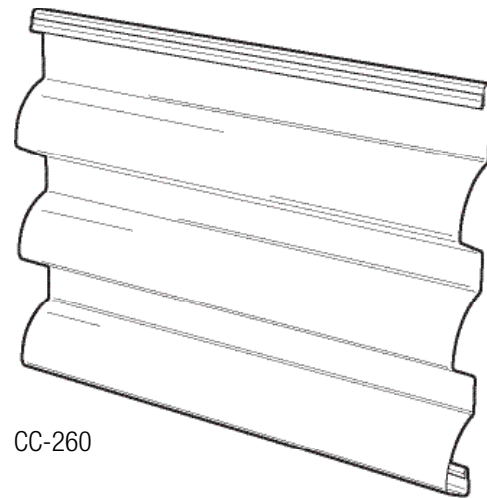
12" [305mm] wide module, 1 1/2" [38mm] deep profiled panels featuring a striking signature curve combined with a bold, flat, sloped rib profile. These profiles have a unique interlocking side joint that incorporates a 16 [1.52mm] gauge clip that provides concealed fastening and allows for thermal movement in non-overlapping conditions. This joint also functions to minimize moisture intrusion.

All Cascade wall panels may be installed in a variety of horizontal or vertical rainscreen applications to form a complete wall system. Systems may vary from an uninsulated screen wall to MetalWrap™ Series, an insulated composite backup panel system with Advanced Thermal and Moisture Protection (ATMP®). This wall panel system has been designed to be used with three attachment clip options:

1. CSC-1 (1/2" Stand-off) can be used for horizontal panels over sheathing with flashing only
2. CSC-2 (3/4" Stand-off) can be used for horizontal panels over sheathing with flashing only.
3. CSC-3 (Flush Clip) designed for vertical panels over subgirts, horizontal panels with microline extrusions and vertical panels over concrete with subgirts and masonry with subgirts.



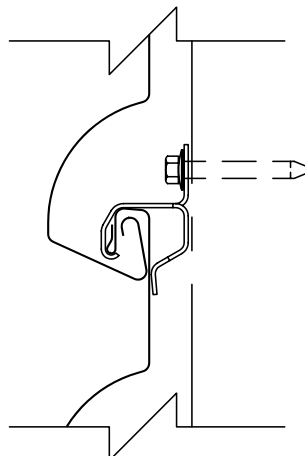
CC-200



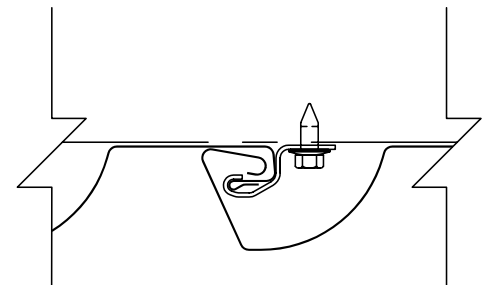
CC-260

## Notes

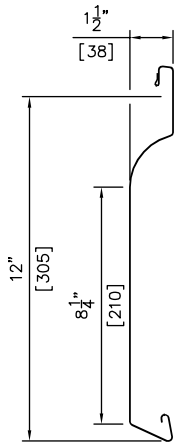
- A. For information on special applications, contact your local CENTRIA Sales Representative.
- B. All CC panels may be used on walls & soffits but not on roofs.
- C. Panel length tolerance is  $\pm 1/4"$  [6mm].
- D. For protective coatings - see CENTRIA color chart.
- E. Oil canning within mill tolerances will not be cause for rejection.



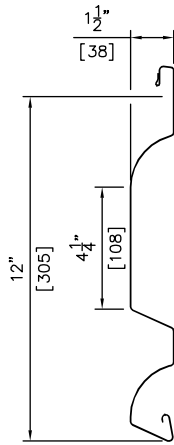
Stand Off Clip



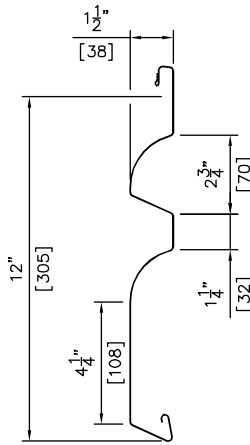
Flush Clip



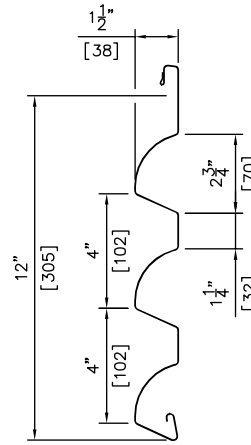
CC-200



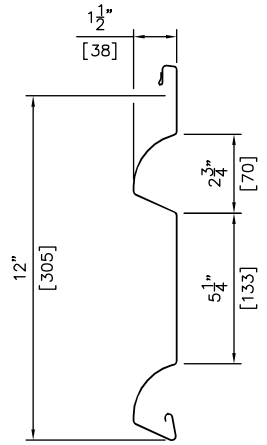
CC-210



CC-220



CC-260



CC-262

### Panel Availability

	<b>GALVANIZED<sup>1</sup> (G90)</b>	<b>STAINLESS STEEL<sup>1</sup> (304)</b>	<b>ALUMINUM<sup>1</sup> (3003-H14)</b>	<b>1.5mm ZINC</b>
<b>PANEL THICKNESS</b>	1 1/2" [38.1mm]	1 1/2" [38.1mm]	1 1/2" [38.1mm]	1 1/2" [38.1mm]
<b>PANEL COVERAGE</b>	12" [305mm]	12" [305mm]	12" [305mm]	12" [305mm]
<b>SIDE LAP</b>	Interlocking	Interlocking	Interlocking	Interlocking
<b>END LAPS</b>	(See standard detail) Flash or extrusion for all gauge Field notch 22 ga. only	(See standard detail) Flash or extrusion for all gauge Field notch 22 ga. only	(See standard detail) Flash or extrusion for all thicknesses	(See standard detail) Flash for all thicknesses
<b>GAUGES (STANDARD)</b>	20 [.91mm], 22 [.76mm]	20 [.91mm], 22 [.76mm]	.040" [1.02mm], .050" [1.27mm]	1mm [.039"]
<b>GAUGES (OPTIONAL)</b>	18 [1.19mm]	N/A	N/A	Contact CENTRIA
<b>STANDARD LENGTH</b>	5 [1.524m] - 30 ft. [9.144m]	5 [1.524m] - 30 ft. [9.144m]	5 [1.524m] - 20 ft. [6.096m]	5 [1.524m] - 20 ft. [6.096m] <sup>3</sup>
<b>OPTIONAL LENGTH</b>	1 [.305m] - 5 ft. [1.524m]	1 [.305m] - 5 ft. [1.524m]	1 [.305m] - 5 ft. [1.524m]	N/A
<b>STANDARD TEXTURE</b>	Smooth	Smooth	Smooth	Smooth - Directional
<b>OPTIONAL TEXTURE</b>	Embossed <sup>2</sup> (20 [.91mm], 22 [.76] gauge only)	Contact CENTRIA <sup>2</sup>	Embossed <sup>2</sup> (.040" [1.02mm] thickness only)	N/A
<b>FINISHES</b>	See CENTRIA Color Chart	#4 Brushed	See CENTRIA Color Chart	See Zinc Flyer

1. Alternate base material, panel lengths and gauge may also be available. Contact CENTRIA.  
 2. Embossing is non-directional.  
 3. Maximum Zinc Panel lengths are 10' [3.048m] for vertical and 20' [6.0m] for horizontal panels.