

Preliminary Presentation

Alana Williams

ARCH 2431 - Prof. King - SP20

Group Member: Carrie Mendoza



Opaque Material Case Study

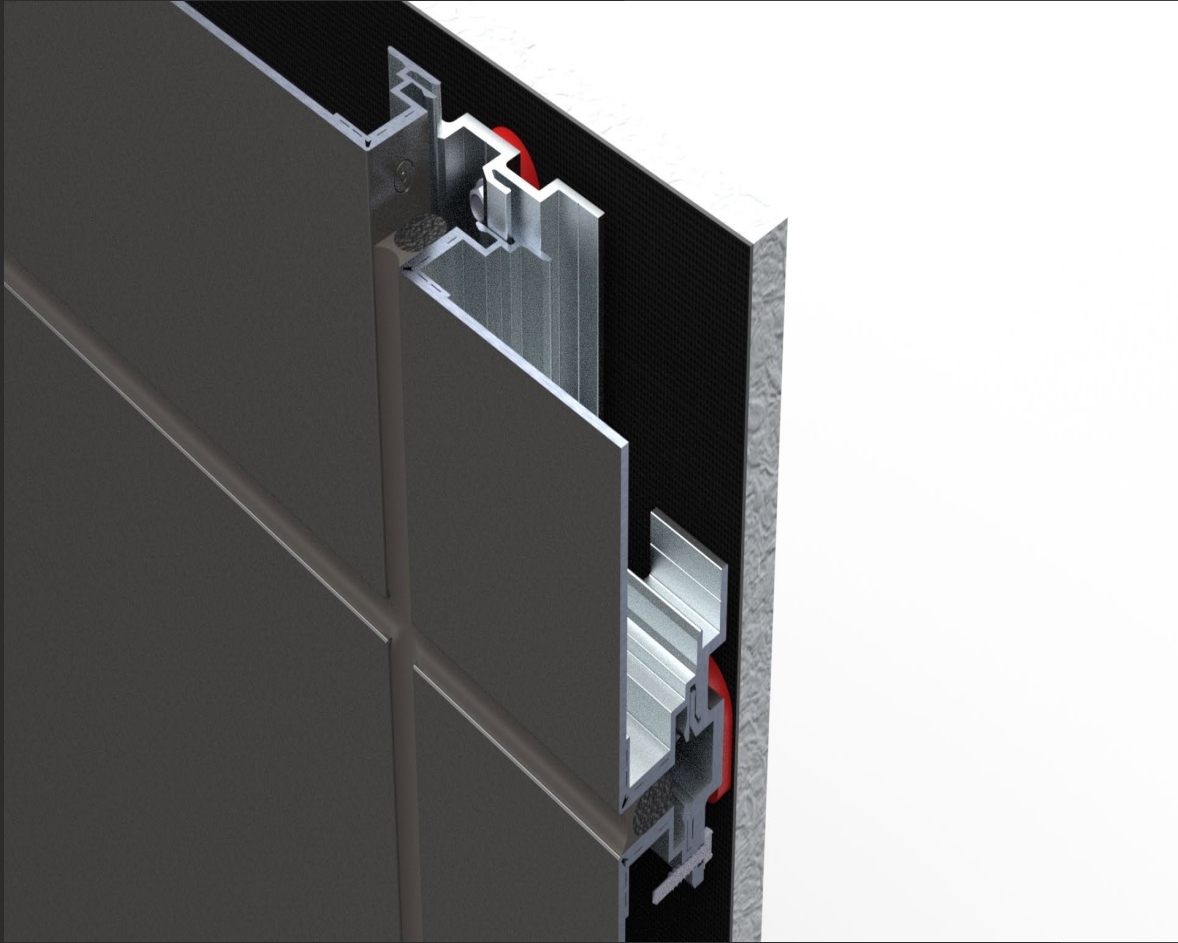
IBEW Local 134 Union Hall

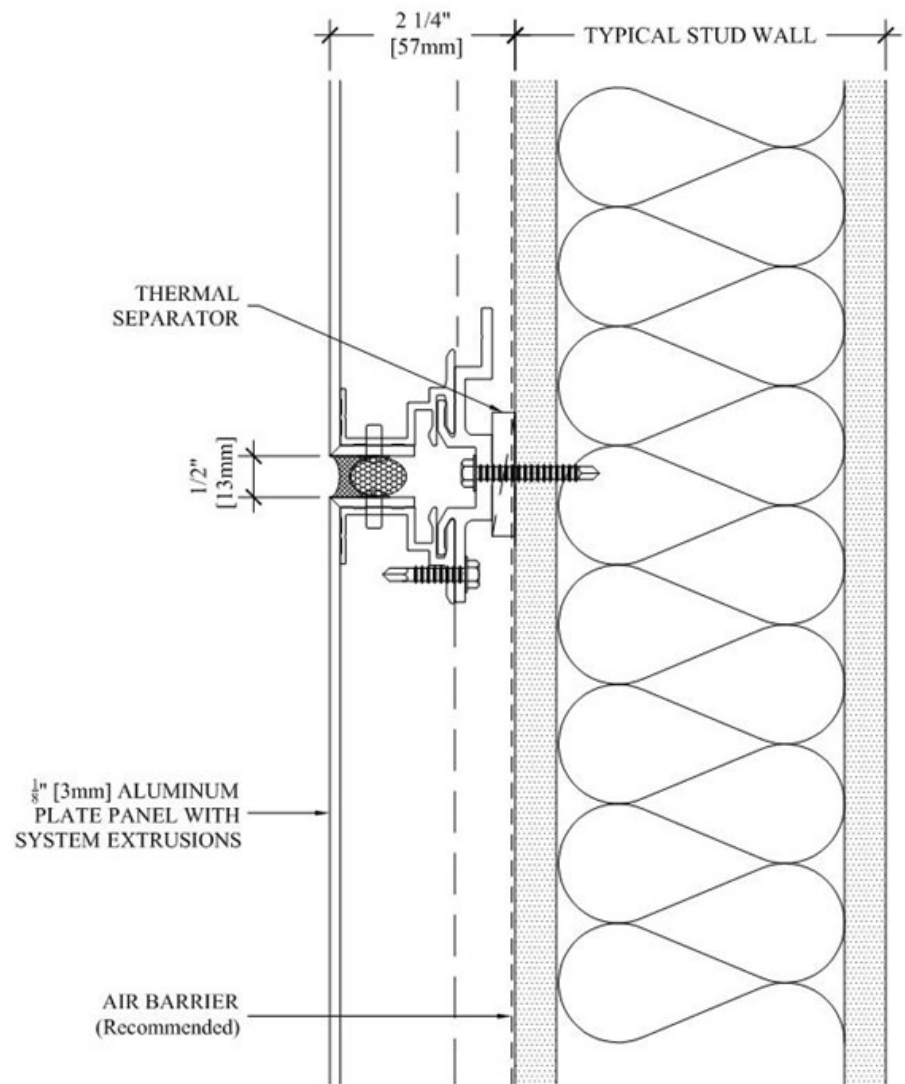
- Chicago, IL

Opaque Material Detail Information

Sobotec Metal Panels

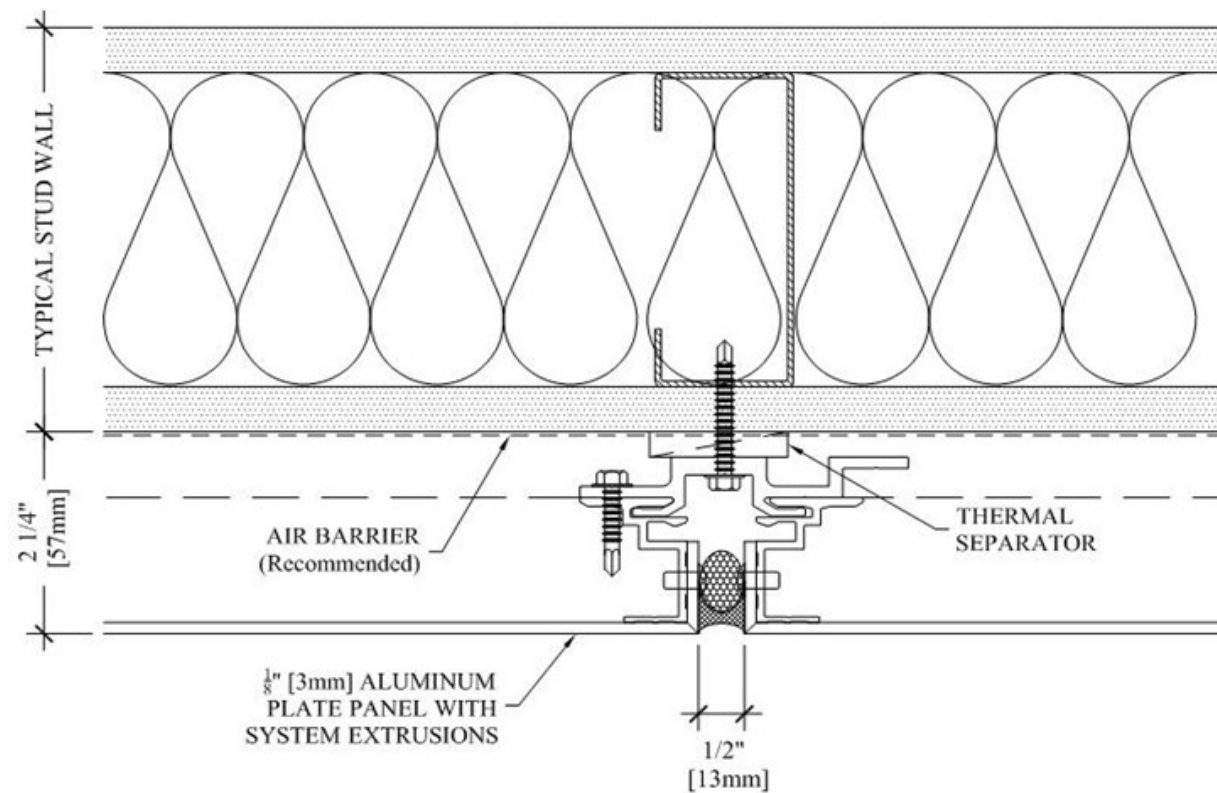
- *SL-1000P*
- Caulked Joint System
- Material: 1/8" Aluminum Plate
- Standard Joint Size: 1/2"
- Wall Design: Pressure Equalized Rainscreen System; Fully Face Sealed





SL-1000P HORIZONTAL JOINT

NOTTO SCALE



SL-1000P VERTICAL JOINT

NOTTO SCALE

Opaque Material Videos

Glass Curtain Wall Material Case Study

Lewis Communication Building

- Birmingham, AL

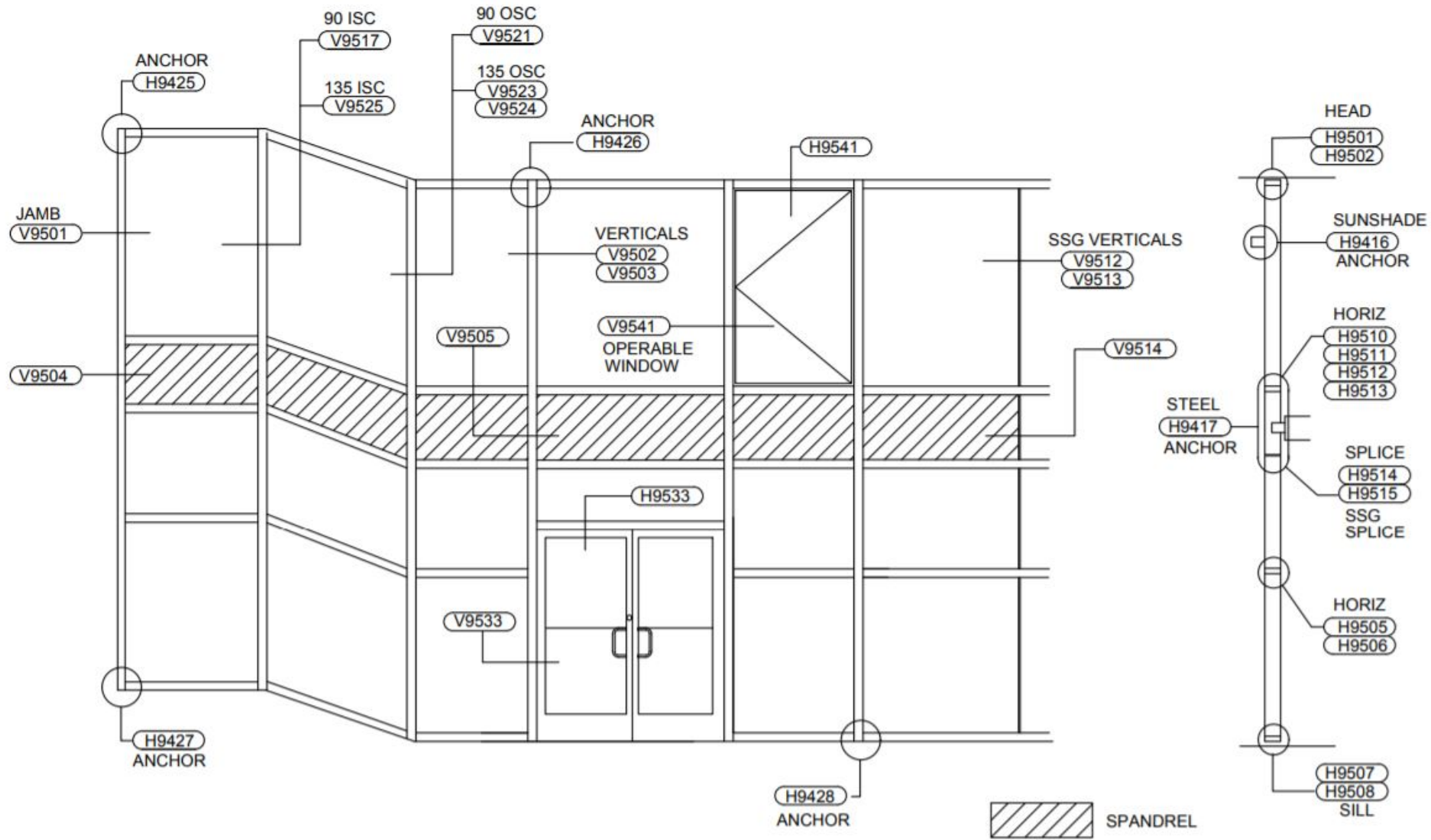


Glass Curtain Wall Material Detail Information

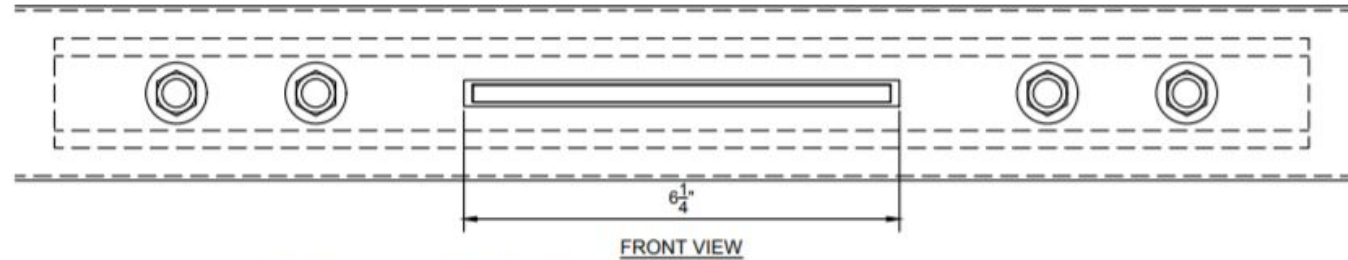
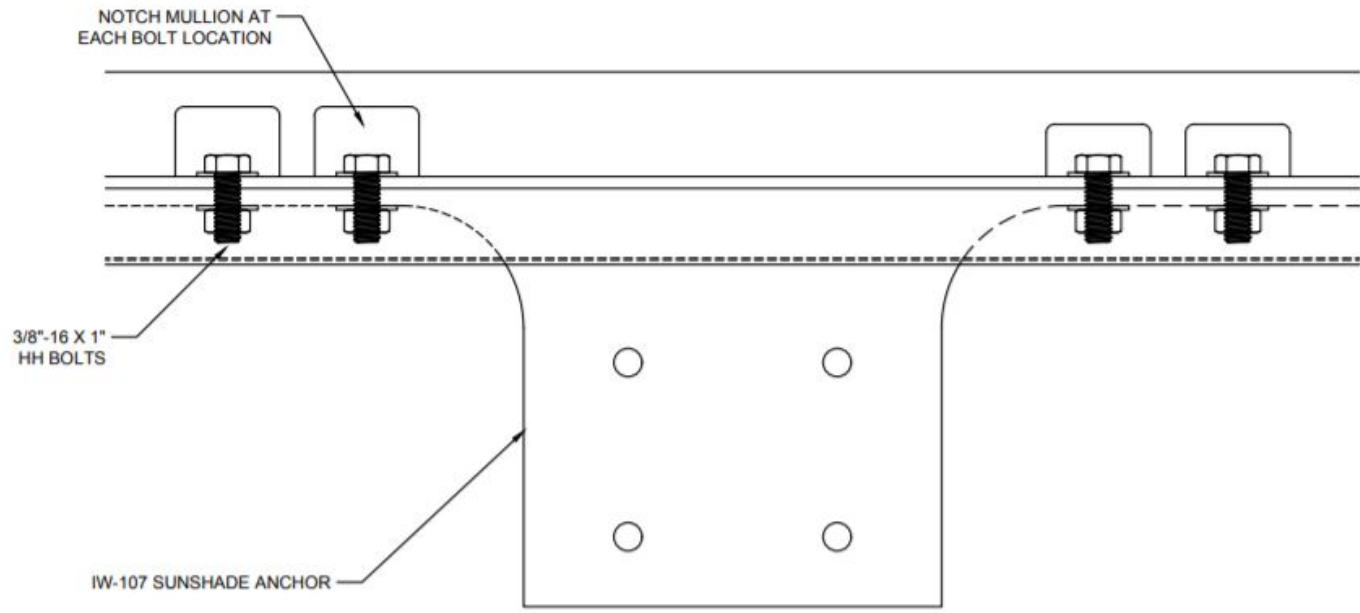
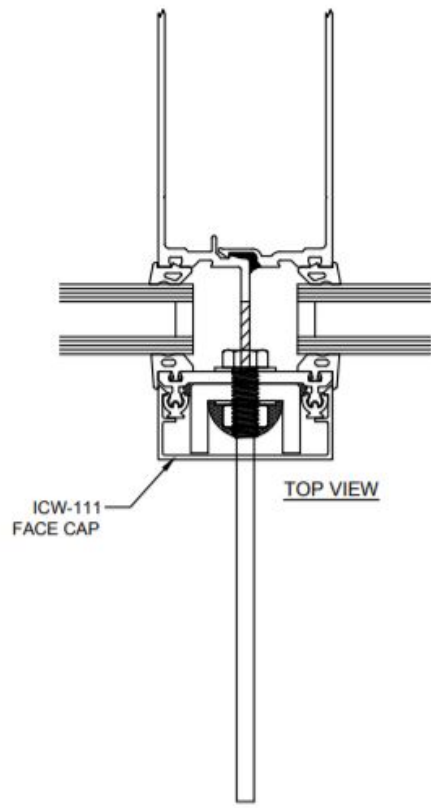
Oldcastle Building Envelope

- *Reliance™-IG SS* Curtain Wall
- Front set wall system
- 7-1/2" depth, using either captured or structural silicone glazed verticals
- Screw spline assembly of frames

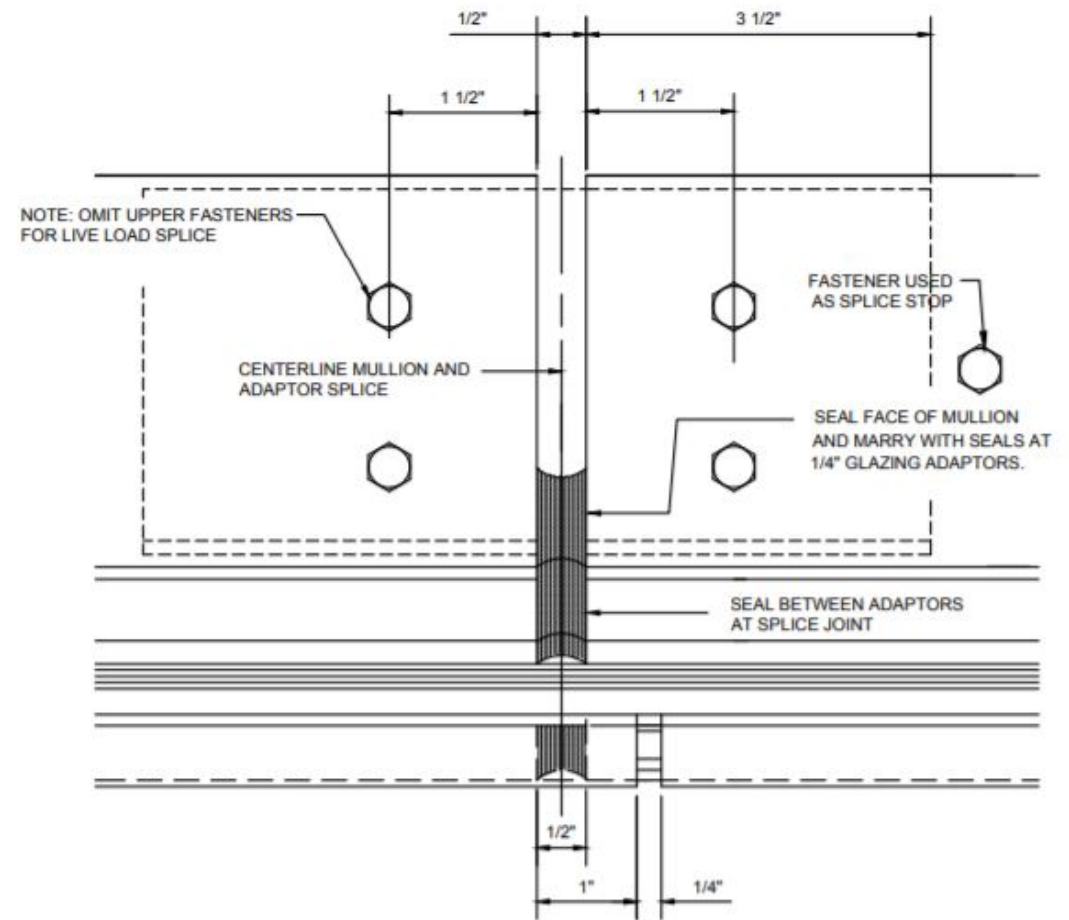
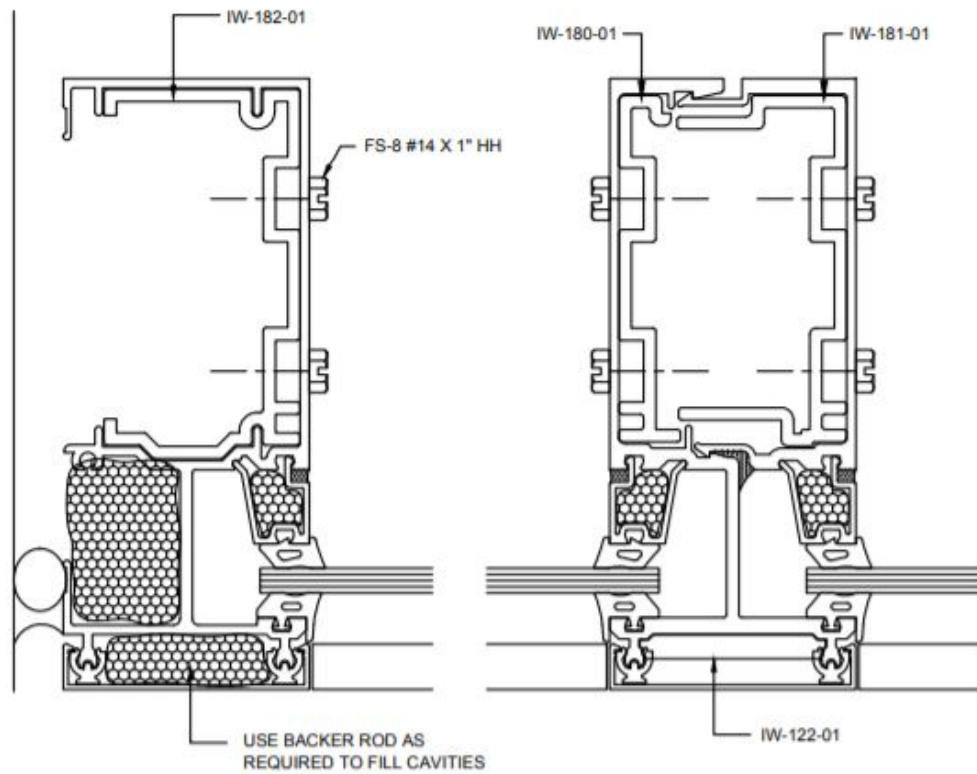




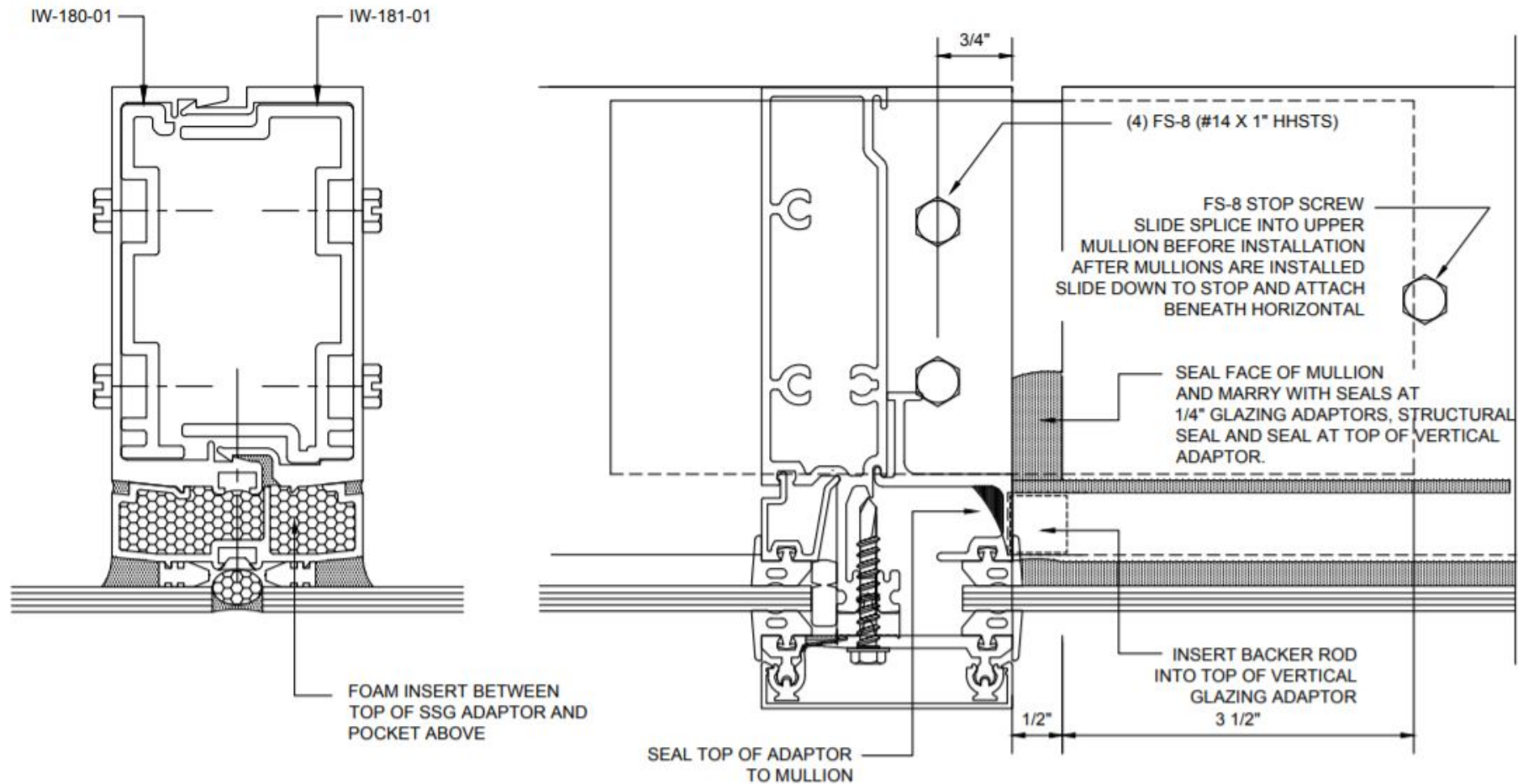
Reliance™-IG SS Curtain Wall
 2-1/2" x 6-1/4" w/ 1" Glazing - Elevation



Reliance™-IG SS
Sunshade Anchor - H9416



Reliance™-IG SS
 Splice at Captured Mullion - H9514



Reliance™-IG SS
Splice at SSG Mullion - H9515

Glass Curtain Wall Material Videos