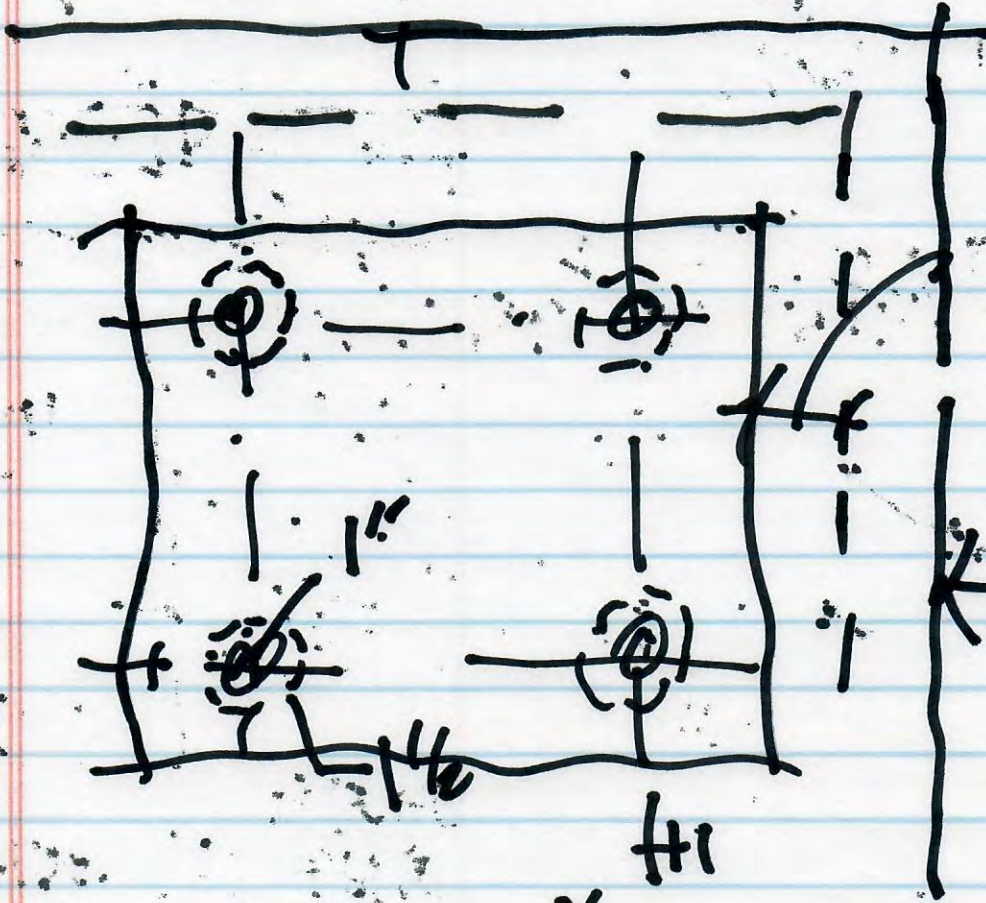


SLIM AS REQ'D
 SKETCH 1/4
 PCK

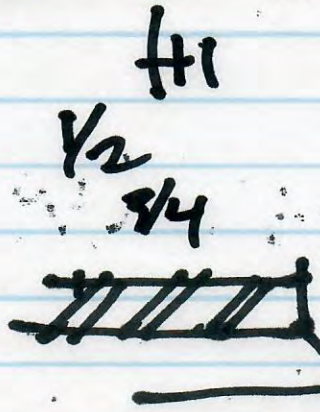
ALIGN TO
BASE PLATE

SNAP TO
FACE



GROOVE @
45°

EDGE
OF LOW
FOOT



GROOVE
@ 45°

3/4" THROUGH PIN

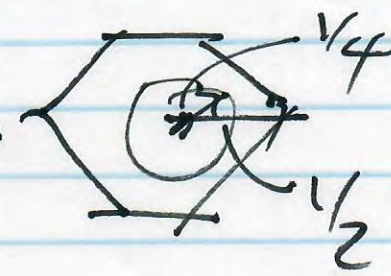
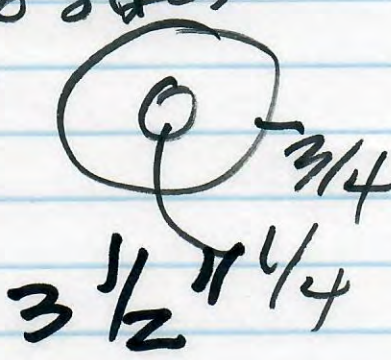
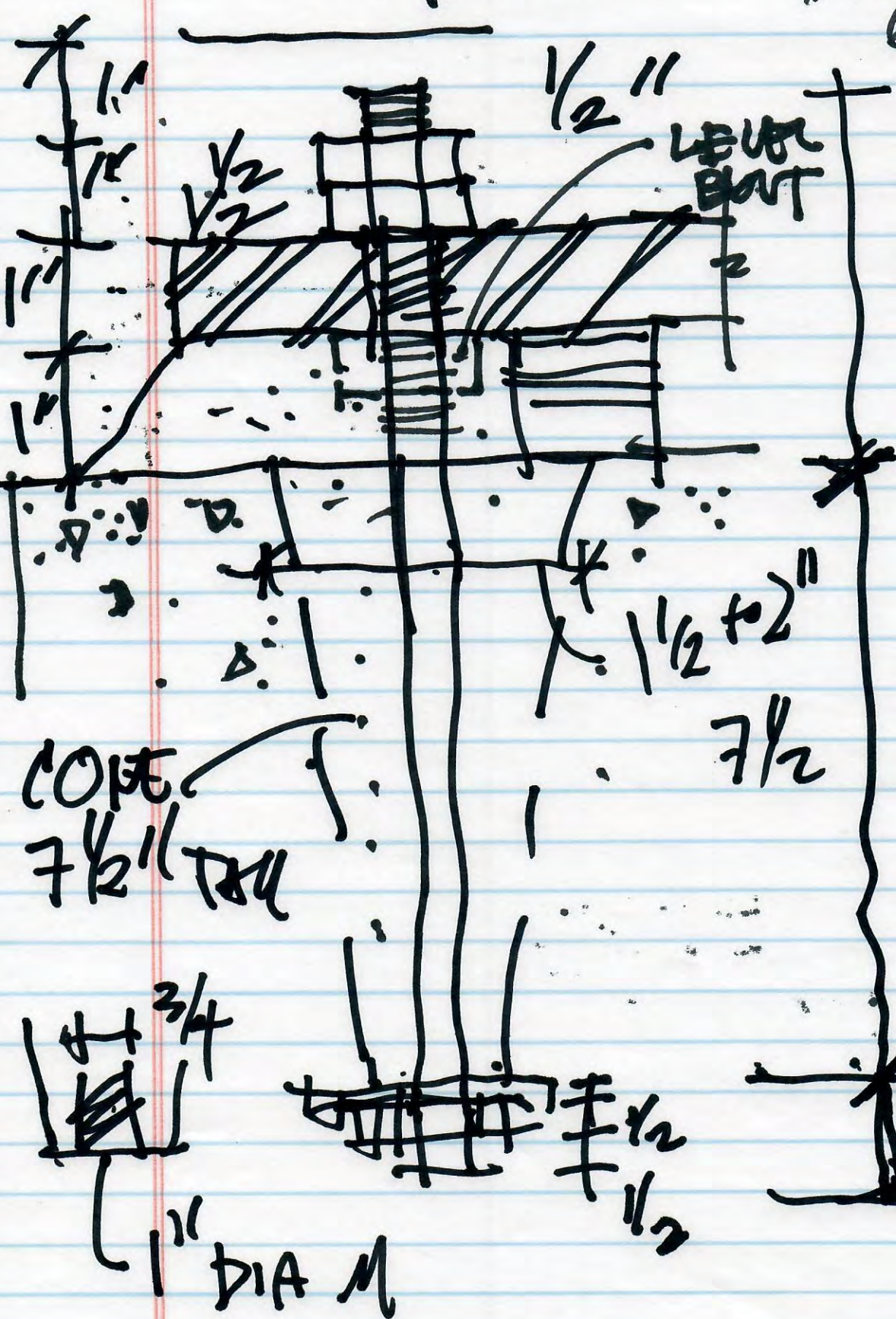
1" BASE PLATE W/

1 1/2" GROOVE RECESS

sketch
pck

4' BELOW

BOLTS
6 sides



COPE
7 1/2"

7 1/2

~~7~~

1 1/2
 4 1/2

 7 1/2

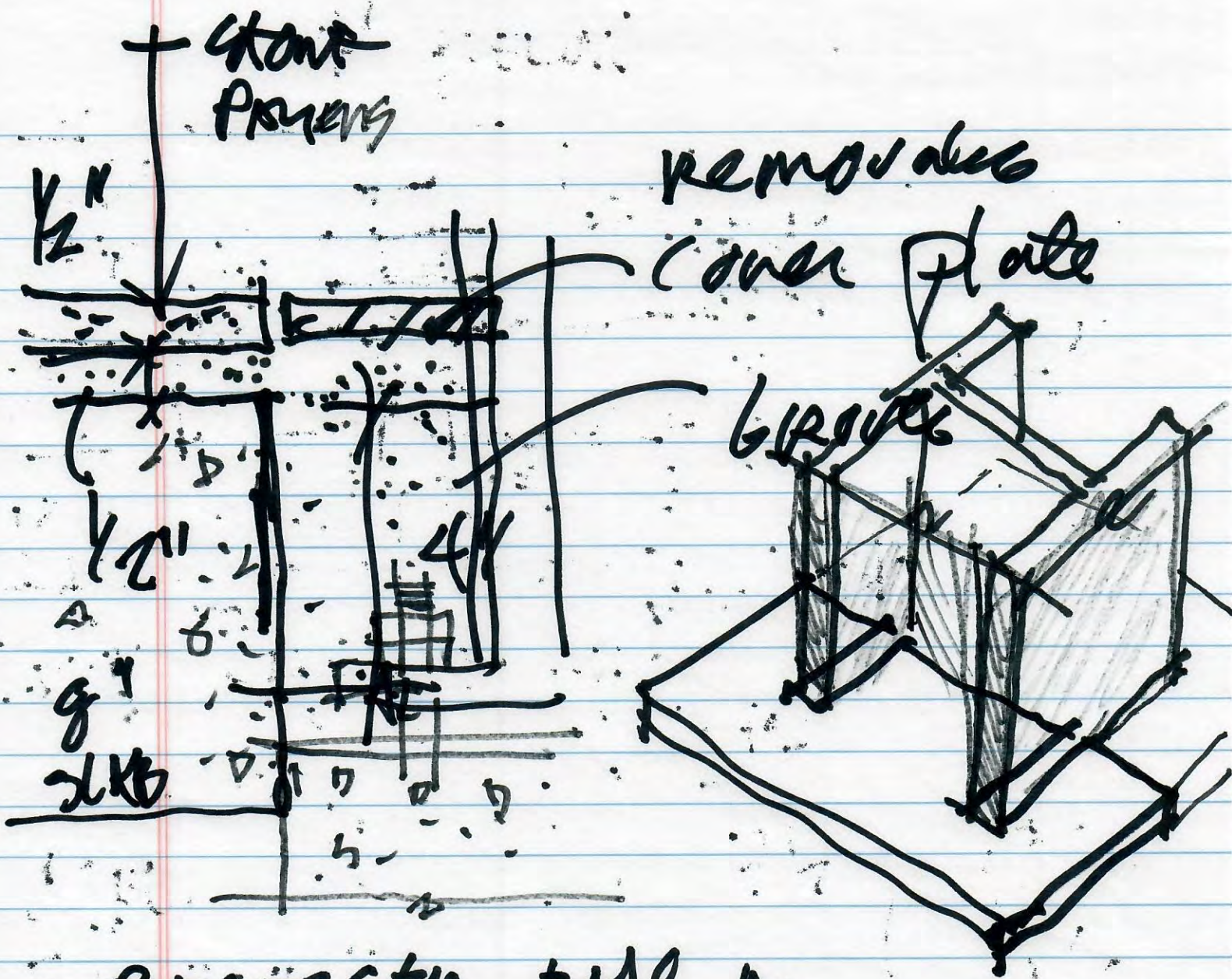
3/4

7 1/2
1 1/2

1" DIA M

1"

1' NB
sketch 3/4
tek



RECESSED BASE M
W/ COVER PLATE

COVER PLATE ON GRANT
A FOR ACCESS

Sketch
Pat 2/4