

Building Technology III

New York City College of Technology

Course Day 29
Revit Day 18 (Project Day 17)

The New Academic Building – Room Layouts & Reflected Ceiling Plans



Professor Paul C. King, RA, AIA, ARA
Prof.Paul.King@Gmail.com

<http://professorpaulking.wordpress.com/>
<http://students.autodesk.com/>

Overview

Counter Tops

- Load
- Duplicate
- Position
- Align & Length

▪Layout Options

Cabinets

- Base & Wall
- Base Cabinets
- Wall Cabinets

Island & Wall Benches

- Elevation
- View Depth

- Center Labs
- Classrooms

▪Hung Ceilings

- Origin & Location
- Lights & Supply/Return

▪Double Bay

- View Range
- Location
- Lights

- Typical Plan
- Teaching Labs

Wrap Up

Room Layouts & the Reflected Ceiling Plan

- The development of a reflected ceiling plan, the location and selection of lighting, the location of mechanical components (air supply and air return) needs to be developed in tandem with the layout of fixed and movable furniture in a given room.
- If a room has multiple uses and multiple layout then the needs of these must be balanced in the design of the reflected ceiling plan.
- To start begin by developing a room layout in plan. With this plan as an underlay develop an appropriate lighting scheme that serves the functions of the room or activity you are designing for.
- Next consider the mechanical requirements of the room and its activities.
- Consider options for the materials of the ceiling and the appropriate ceiling heights.
- Consider the location of structural , mechanical or other elements including sprinkler systems, exit signs, etc.
- Consider the wall types that will abut the ceiling and develop appropriate details
- Consider the ratings of wall types and the distribution of mechanical systems.

Overview

Counter Tops

- Load
- Duplicate
- Position
- Align & Length
- Layout Options

Cabinets

- Base & Wall
- Base Cabinets
- Wall Cabinets

Island & Wall Benches

- Elevation
- View Depth

Center Labs

Classrooms

- Hung Ceilings
- Origin & Location
- Lights & Supply/Return

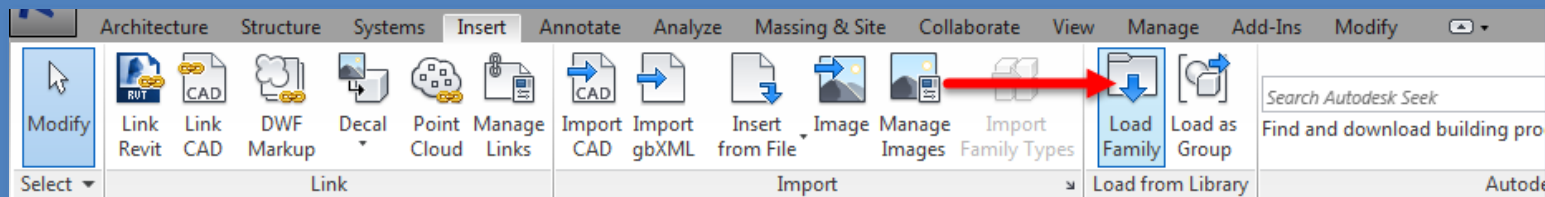
Double Bay

- View Range
- Location
- Lights

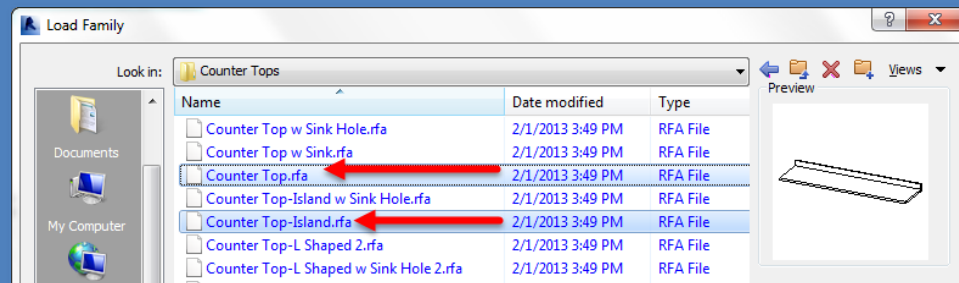
- Typical Plan
- Teaching Labs

Wrap Up

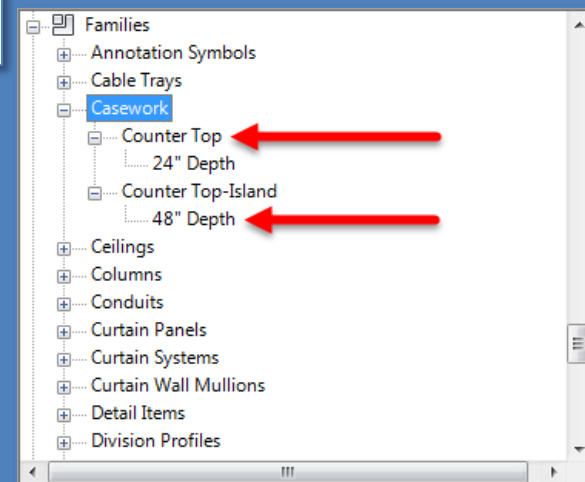
Room Layouts : Countertops



- Load **Casework** > **Domestic Kitchen** > **Countertop** and **Counter Top-Island**



- Typical Lab Counters are 30" deep and Islands are 60" deep.
- We will need to duplicate these family objects to create our own new types.



- Select 24" Counter Top > Duplicate > 30" Depth
- Select 48" Counter Top Island > Duplicate > 60" Depth

Overview

Counter Tops

- Load
- Duplicate
- Position
- Align & Length

Layout Options

Cabinets

- Base & Wall
- Base Cabinets
- Wall Cabinets

Island & Wall Benches

- Elevation
- View Depth

Center Labs

Classrooms

- Hung Ceilings
- Origin & Location
- Lights & Supply/Return

Double Bay

- View Range
- Location
- Lights

- Typical Plan
- Teaching Labs

Wrap Up

Room Layouts : Countertops : Position

Properties

Counter Top
24" Depth

New Casework

Constraints

Level: Level 6

Host: Level : Level 6

Offset: 0' 0"

Moves With Nearby Elements

Dimensions

Length: 8' 0"

Identity Data

Comments

Mark

Properties help

Apply

Project Browser - NewAcademicBldg.Prof.King.Day 18.Lab Develop...

Families

- Annotation Symbols
- Cable Trays
- Casework
 - Counter Top
 - 24" Depth
 - Counter Top-Island
 - 48" Depth
- Ceilings
- Columns
- Conduits
- Curtain Panels
- Curtain Systems
- Curtain Wall Mullions

Counter Tops can be dragged into the plan view from the Project Browser

LAB 1

601

207 SF

LAB 2

602

422 SF

LAB 1

601

207 SF

LAB 2

602

422 SF

Tap on the space bar to rotate the counter top in 90 degree increments

- Case work can be dragged into the plan from the family section of the project browser
- Tap on the space key to rotate the counter top

Overview

Counter Tops

- Load
- Duplicate
- Position
- Align & Length

• Layout Options

Cabinets

- Base & Wall
- Base Cabinets
- Wall Cabinets

Island & Wall Benches

- Elevation
- View Depth

- Center Labs
- Classrooms

- Hung Ceilings
- Origin & Location
- Lights & Supply/Return

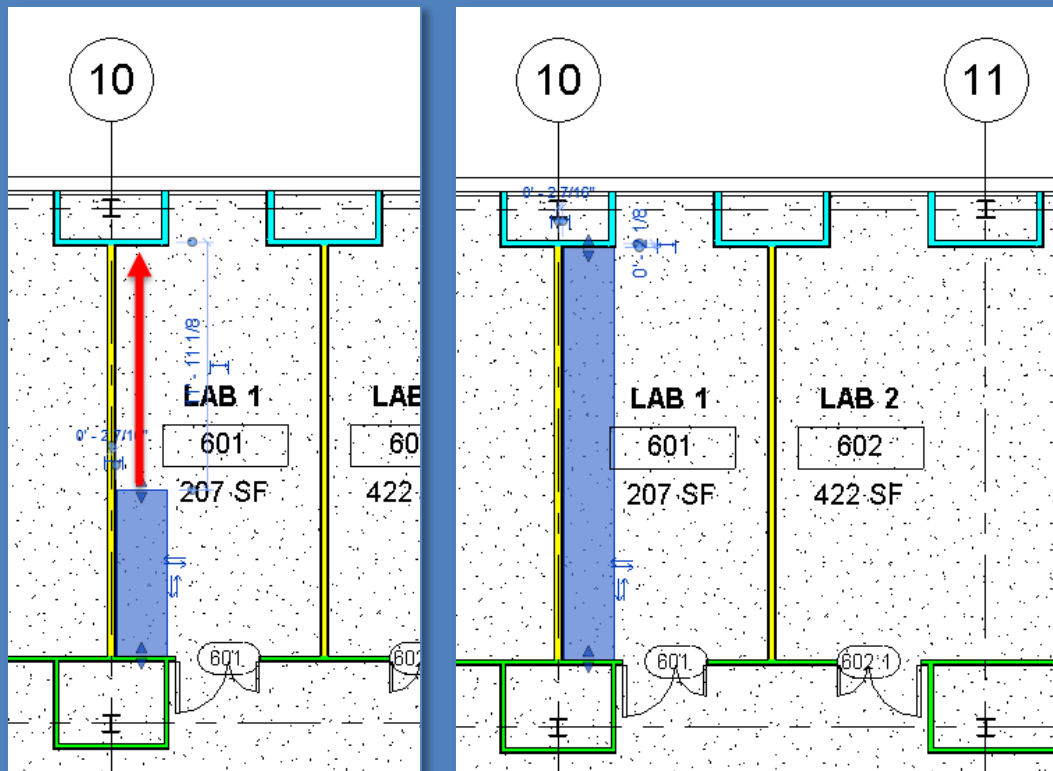
• Double Bay

- View Range
- Location
- Lights

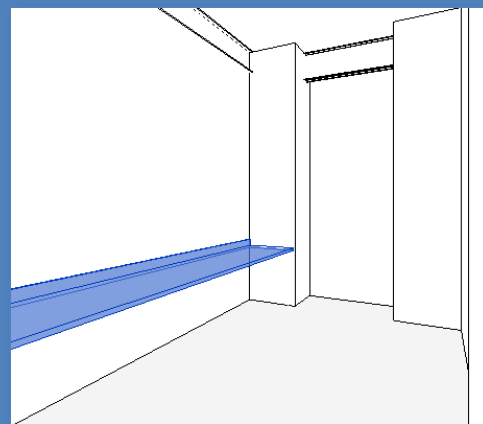
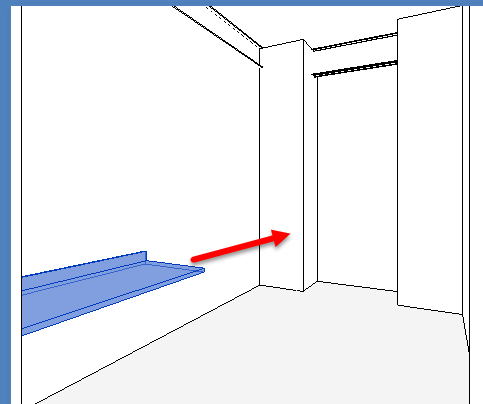
- Typical Plan
- Teaching Labs

Wrap Up

Room Layouts : Countertops : Align & Length



- Place the counter against the wall – Align it if needed
- Stretch or Align the counter length to the opposite wall



Overview

Counter Tops

- Load
- Duplicate
- Position
- Align & Length

Layout Options

Cabinets

- Base & Wall
- Base Cabinets
- Wall Cabinets

Island & Wall Benches

- Elevation
- View Depth

- Center Labs
- Classrooms

- Hung Ceilings
- Origin & Location
- Lights & Supply/Return

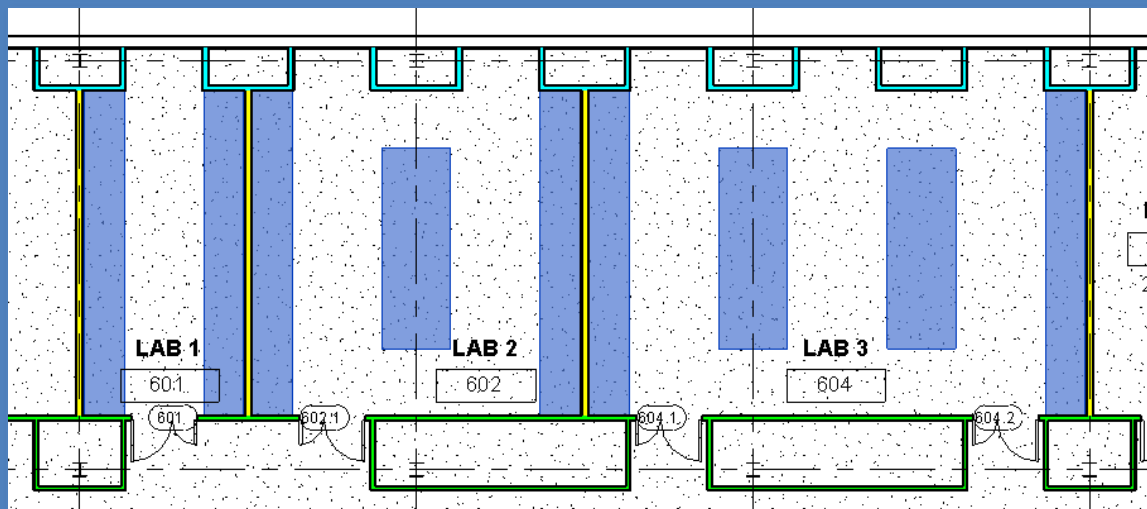
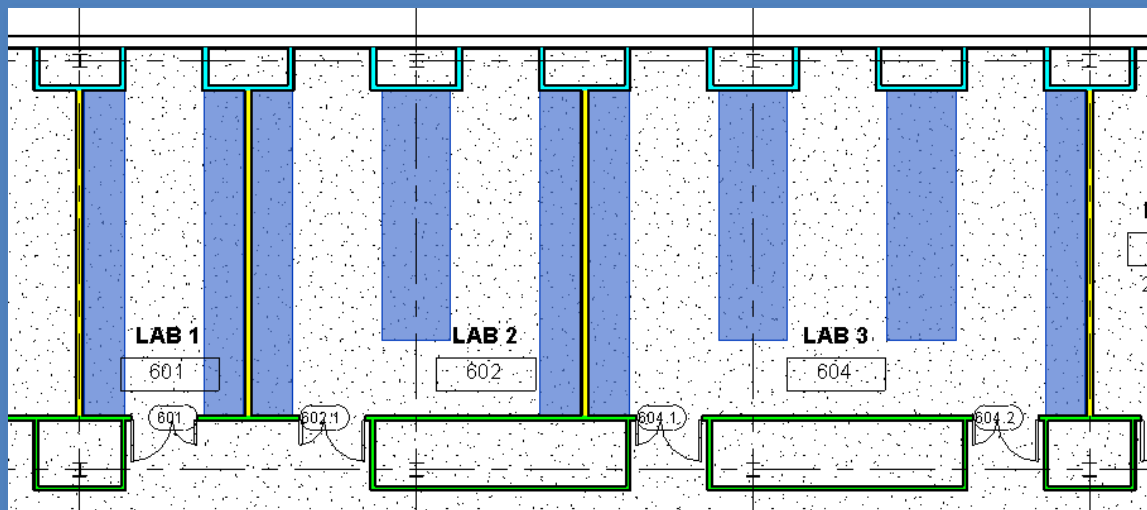
Double Bay

- View Range
- Location
- Lights

- Typical Plan
- Teaching Labs

Wrap Up

Room Layouts : Countertops : Layout Options



- Layout typical single, double and triple bay labs
- Consider workflow and use either a peninsula or island configuration
- Cabinets will fit both below and above the counters
- Typical sizes are multiples of 3" (15", 18", 21", 24", 27", 30", 33", 36", 42", 45" & 48")
- Counters need to be longer than the combined width of cabinets by 1-2 inches so cabinets can be installed.
- Bench lengths would be 12'-2" and not 12" or 15'-2" and not 15'
- Filler strips are added to make up gaps

Overview

Counter Tops

- Load
- Duplicate
- Position
- Align & Length

Layout Options

Cabinets

- Base & Wall
- Base Cabinets
- Wall Cabinets

Island & Wall Benches

- Elevation
- View Depth

Center Labs

- Classrooms

- Hung Ceilings
- Origin & Location
- Lights & Supply/Return

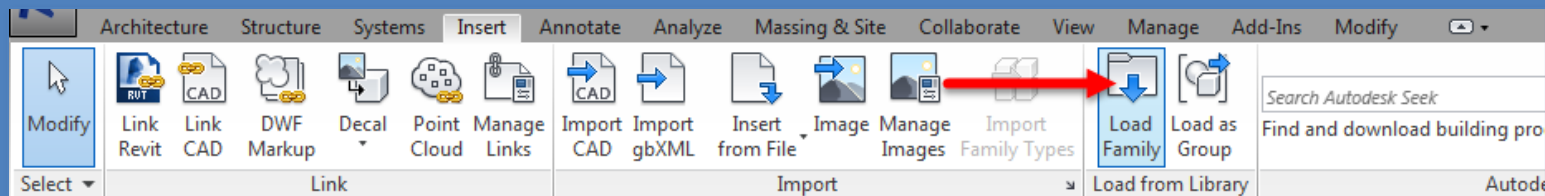
Double Bay

- View Range
- Location
- Lights

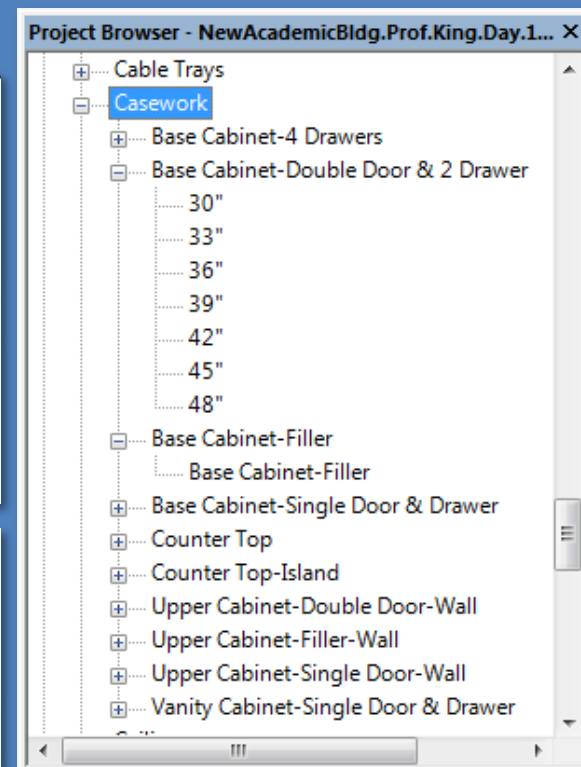
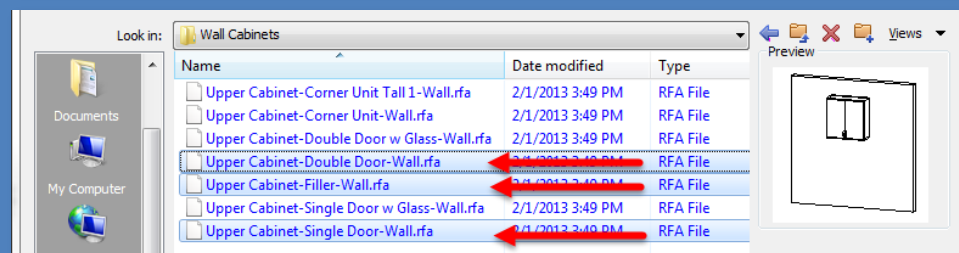
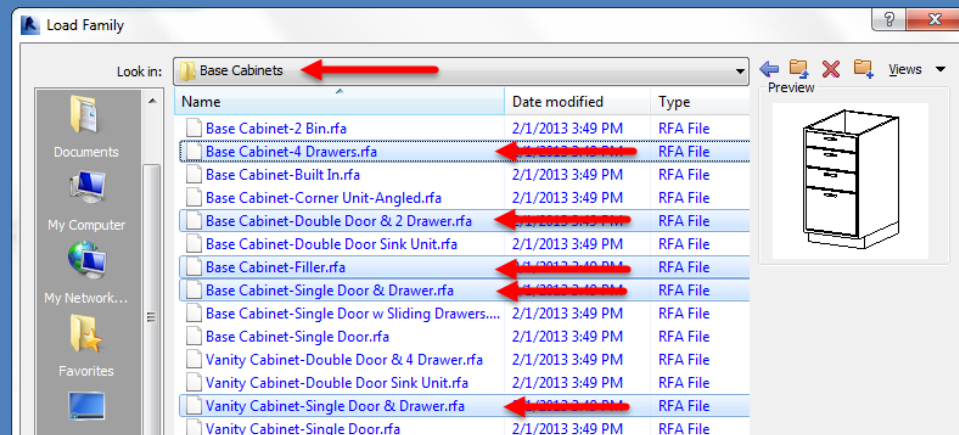
- Typical Plan
- Teaching Labs

Wrap Up

Room Layouts : Base & Wall Cabinets



• Load Casework > Base Cabinets



- Load
- Duplicate
- Position
- Align & Length

- Base & Wall
- Base Cabinets
- Wall Cabinets

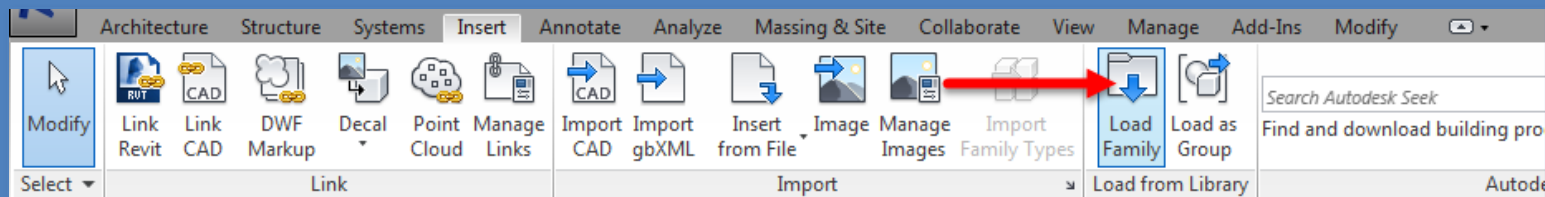
- Elevation
- View Depth

- Hung Ceilings
- Origin & Location
- Lights & Supply/Return

- View Range
- Location
- Lights

- Typical Plan
- Teaching Labs

Room Layouts : Base & Wall Cabinets : Types



• Load Casework > Base Cabinets

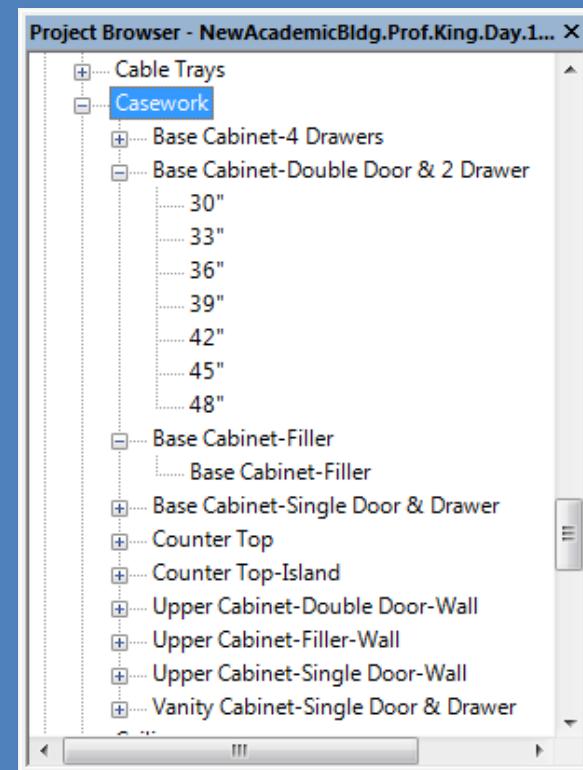
• Base Cabinets

- Base Cabinet 4-Drawers
- Base Cabinet Double Door & 2 Drawer
- Base Cabinet
- Base Cabinet-Single Door & Drawer
- Base Cabinet – Filler

• Load Casework > Wall Cabinets

• Wall Cabinets

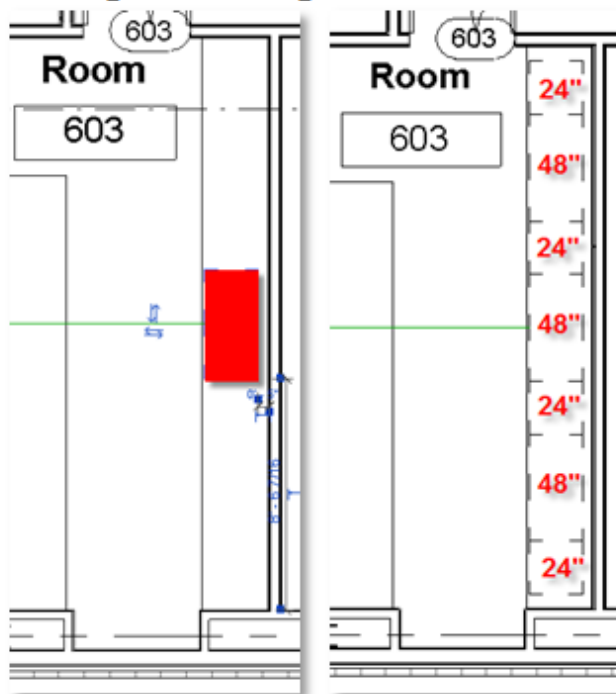
- Upper Cabinet Double Door -Wall
- Upper Cabinet-Single Door-Wall
- Upper Cabinet - Filler



Room Layouts : Base Cabinets & Filler Panels

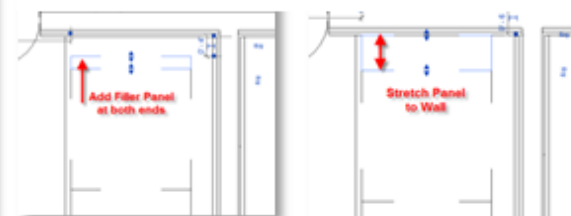
- Add Base Cabinets along the wall
- Add filler panels at the ends

Add Cabinets: Add a **48" Double Door Cabinet** in the center back 1" from the counter edge
Add a **24" 4 Drawer Cabinet** on either side of the 48" cabinet
Add **3@ 48"** and **4@ 24"** cabinets alternating



Add a **Filler Panel** at either end of the bench and then stretch them until they hit the wall.

Filler Panels fill in the gaps between standard size cabinets and non-standard counter lengths

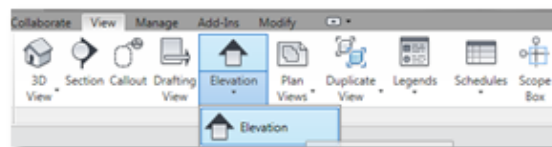


Room Layouts : Base Cabinets & Filler Panels

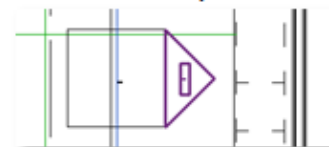
- Add Base Cabinets along the wall
- Add filler panels at the ends

View > Elevation:

Add new elevation view.

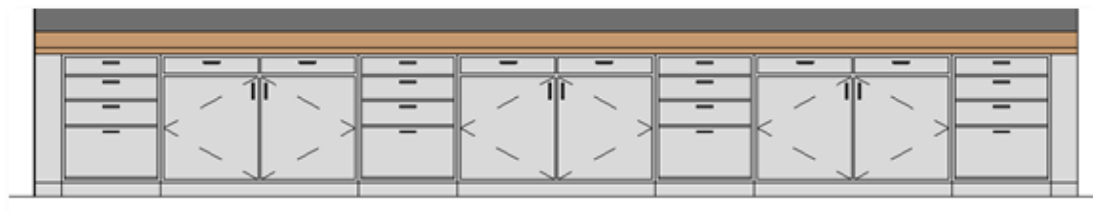


Select the key > Go To Elevation View



Elevation View:

View of the base cabinets



Room Layouts : Wall/Upper Cabinets & Filler Panels

Day 18 Project 17

Overview

Counter Tops

- Load
- Duplicate
- Position
- Align & Length
- Layout Options

Cabinets

- Base & Wall
- Base Cabinets
- Wall Cabinets

Island & Wall Benches

- Elevation
- View Depth

- Center Labs
- Classrooms

- Hung Ceilings
- Origin & Location
- Lights & Supply/Return

- Double Bay

- View Range
- Location
- Lights

- Typical Plan
- Teaching Labs

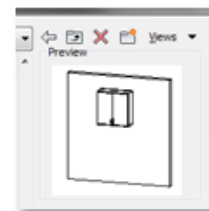
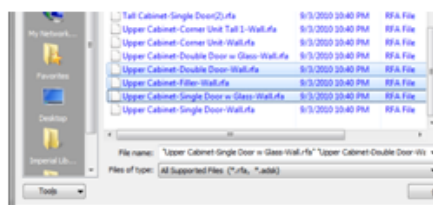
Wrap Up

Insert > Load Family: Select the following Upper Cabinet Families

Upper Cabinet-Double Door Wall

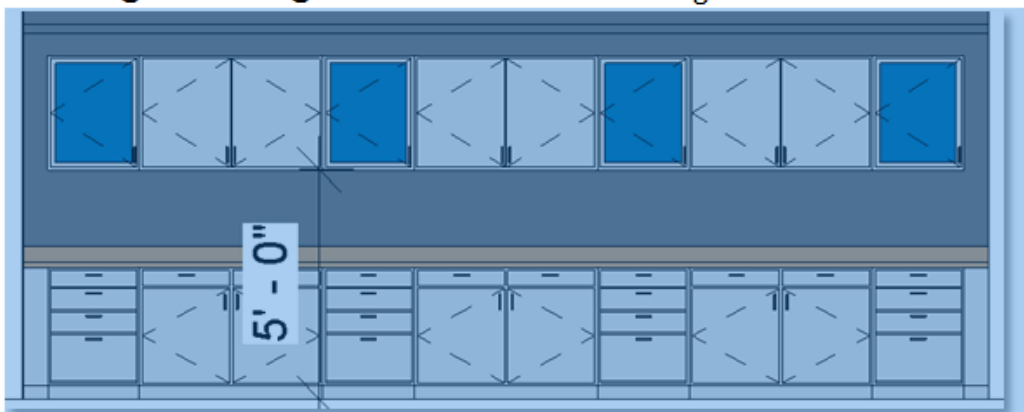
Upper Cabinet-Single Door w/ Glass-Wall

Upper Cabinet-Filler



Add Cabinets:

Work in the **Elevation View**. Add the matching wall cabinets 5'-0" from the floor
Add a **48" Upper Cabinet-Double Door-Wall** aligned with the middle cabinet
Add a **24" Upper Cabinet-Single Door Glass-Wall** on each side of the 48" cabinet
Locate **3@ 48"** and **4@ 24"** wall cabinets alternating

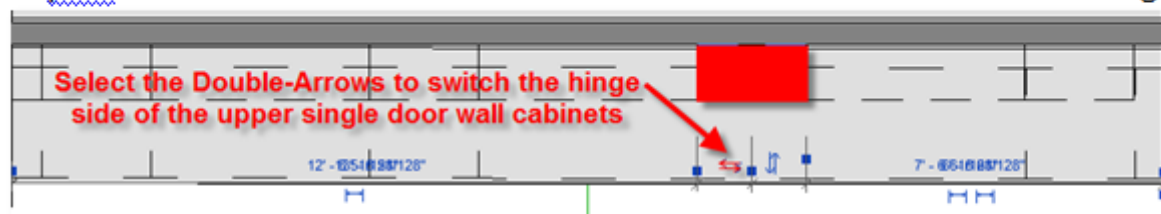


Room Layouts : Wall/Upper Cabinets & Filler Panels

- Add Base Cabinets along the wall
- Add filler panels at the ends

Flip Door Swing:

In plan view select the double arrow to switch the direction of door swing



Add Filler Panels:

Add a Filler Panel to either end of the wall cabinets to finish up



Room Layouts : Island Bench & Wall Bench

Day 18 Project 17

Overview

Counter Tops

- Load
- Duplicate
- Position
- Align & Length

•Layout Options

Cabinets

- Base & Wall
- Base Cabinets
- Wall Cabinets

Island & Wall Benches

- Elevation
- View Depth

- Center Labs
- Classrooms

- Hung Ceilings
- Origin & Location
- Lights & Supply/Return

•Double Bay

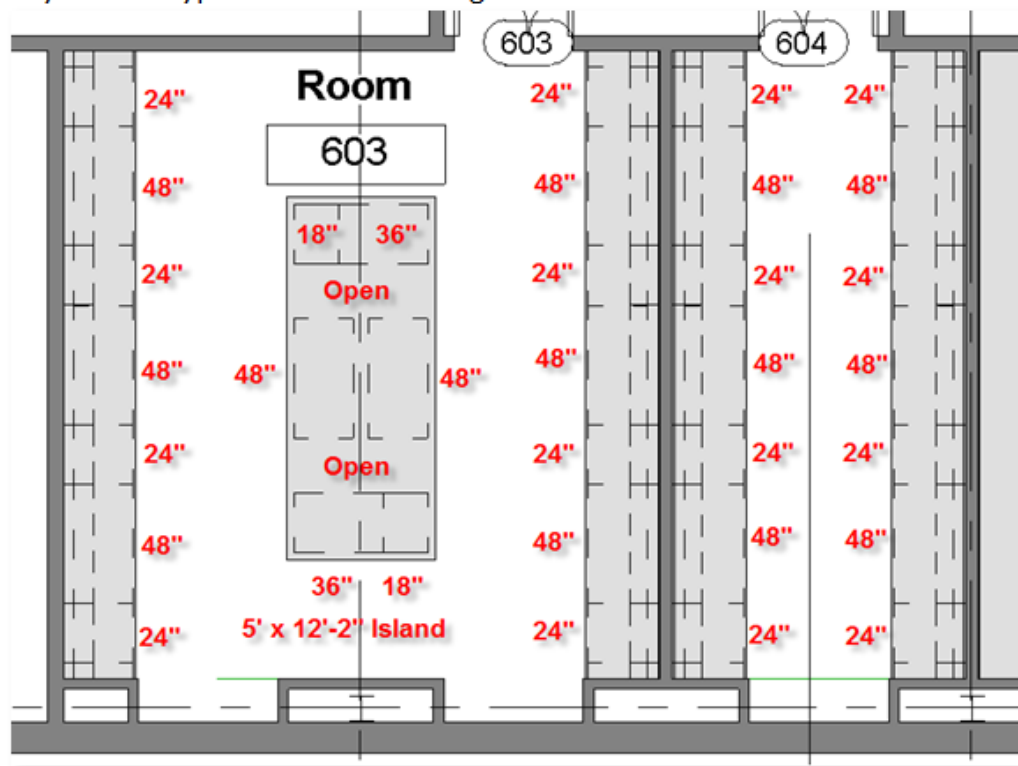
- View Range
- Location
- Lights

- Typical Plan
- Teaching Labs

Wrap Up

Island Bench: The island bench is 5'-0" x 12'-2" with the cabinets set back 3" from the edge. Add a 36" Double Door and a 18" 4 drawer at either end. Add a 48" double door cabinet in the middle of each long side. There will be a space between cabinets.

Completed Lab: Layout of a typical double and single lab



Day 18 Project 17

Overview

Counter Tops

- Load
- Duplicate
- Position
- Align & Length

▪Layout Options

Cabinets

- Base & Wall
- Base Cabinets
- Wall Cabinets

Island & Wall Benches

- Elevation
- View Depth

- Center Labs
- Classrooms

- Hung Ceilings
- Origin & Location
- Lights & Supply/Return

▪Double Bay

- View Range
- Location
- Lights

- Typical Plan
- Teaching Labs

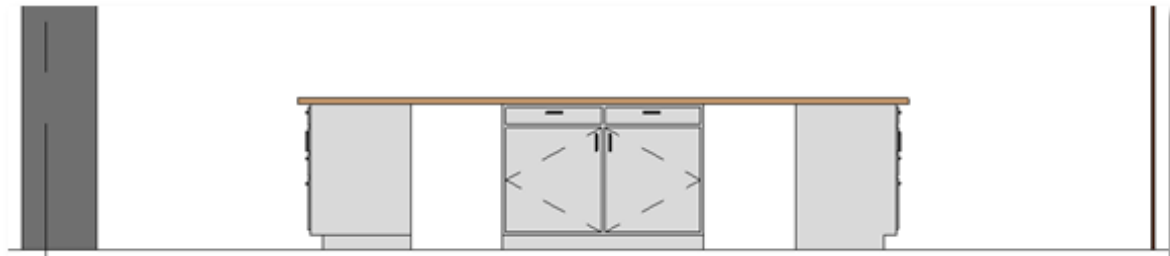
Wrap Up

Room Layouts : Island Bench Elevations

Island Elevation: Showing the short end with a 36" double door and a 18" 4 drawer cabinets



Island Elevation: Showing the long side with a middle 48 double door and open knee spaces



Room Layouts : Elevation View Depth

Day 18 Project 17

Overview

Counter Tops

- Load
- Duplicate
- Position
- Align & Length

Layout Options

Cabinets

- Base & Wall
- Base Cabinets
- Wall Cabinets

Island & Wall Benches

- Elevation
- View Depth

- Center Labs
- Classrooms

- Hung Ceilings
- Origin & Location
- Lights & Supply/Return

- Double Bay

- View Range
- Location
- Lights

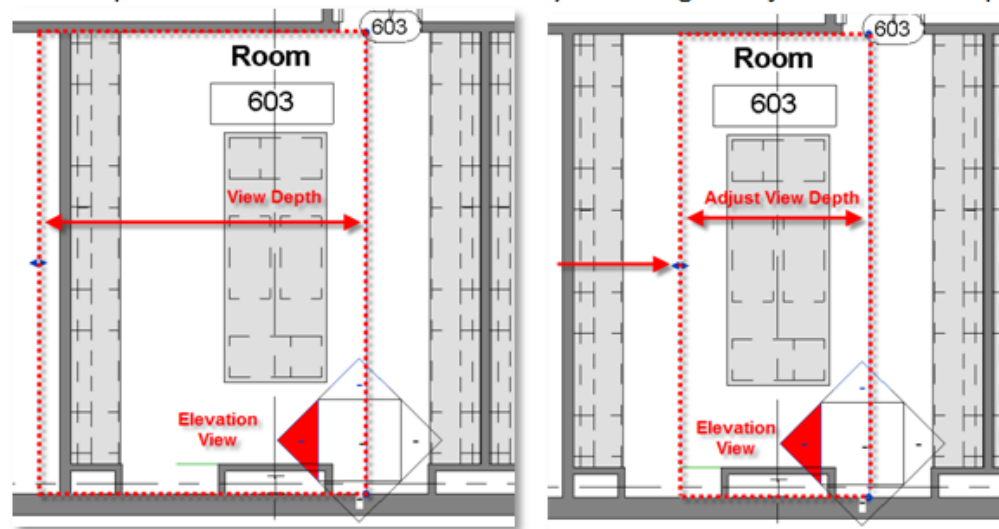
- Typical Plan
- Teaching Labs

Wrap Up

Default Elevation: The long elevation of the Island is confused with the cabinets beyond in the view



Adjust View Depth: From a plan view select the elevation key and drag to adjust the view depth



Room Layouts : Elevation View Depth

Day 18 Project 17

Overview

Counter Tops

- Load
- Duplicate
- Position
- Align & Length

▪Layout Options

Cabinets

- Base & Wall
- Base Cabinets
- Wall Cabinets

Island & Wall Benches

- Elevation
- View Depth

▪Center Labs

▪Classrooms

▪Hung Ceilings

▪Origin & Location

▪Lights & Supply/Return

▪Double Bay

▪View Range

▪Location

▪Lights

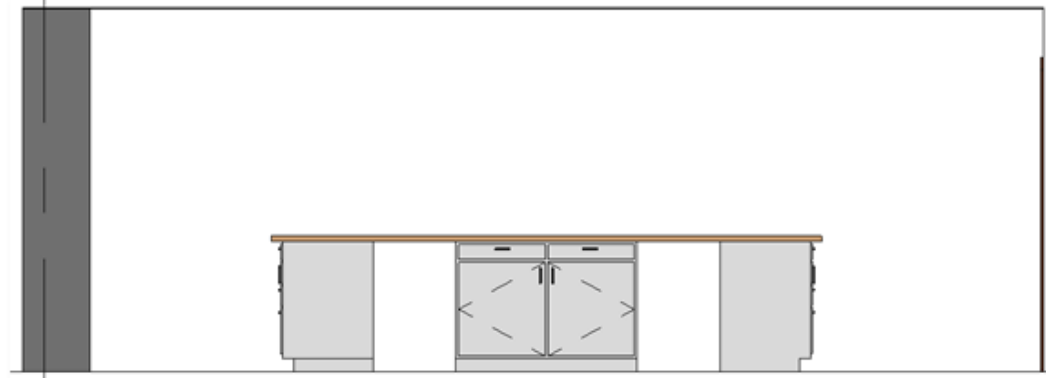
▪Typical Plan

▪Teaching Labs

Wrap Up

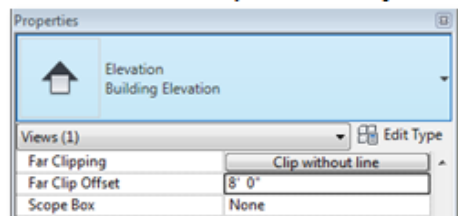
Island Elevation:

A cleaner elevation with the depth adjusted



Alternate Method:

As an alternate you can adjust the Elevation Far Clip Offset Properties



Room Layouts : Center Lab Bays & Casework

Day 18 Project 17

Overview

Counter Tops

- Load
- Duplicate
- Position
- Align & Length

Layout Options

Cabinets

- Base & Wall
- Base Cabinets
- Wall Cabinets

Island & Wall Benches

- Elevation
- View Depth

Center Labs

Classrooms

- Hung Ceilings
- Origin & Location
- Lights & Supply/Return

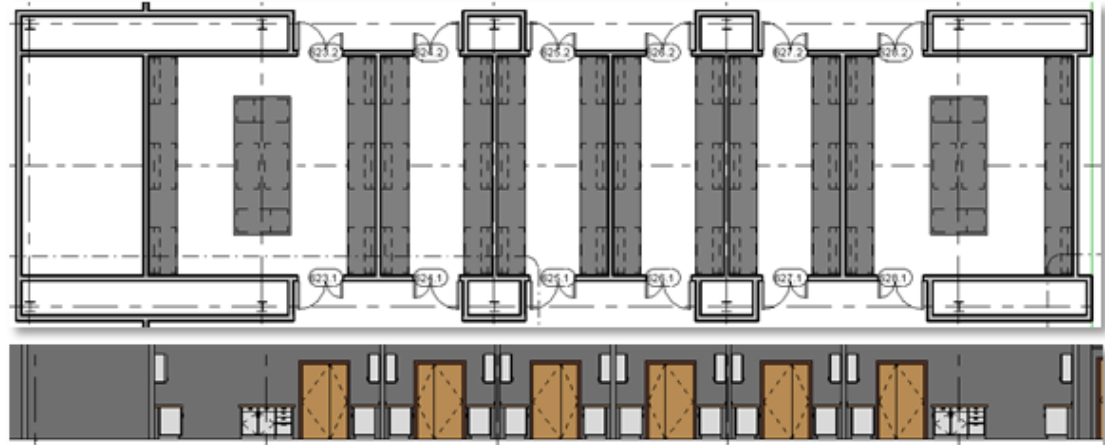
Double Bay

- View Range
- Location
- Lights

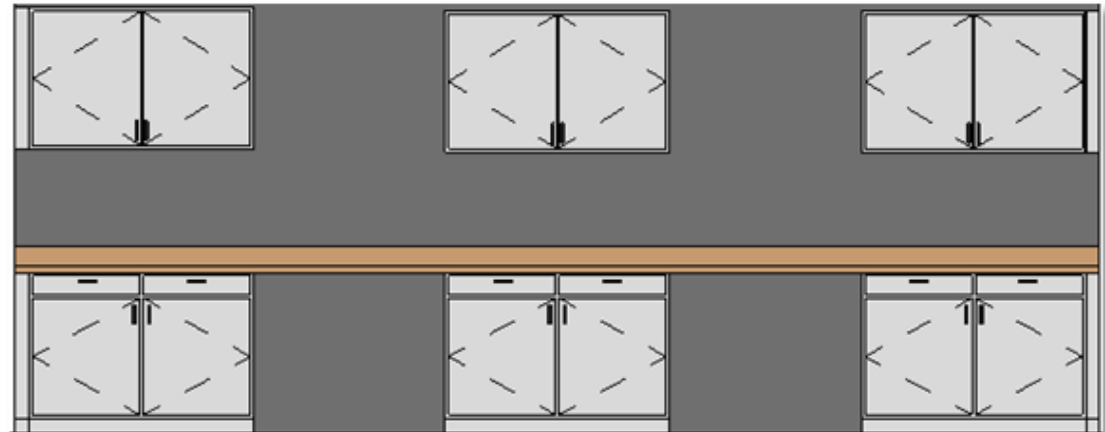
- Typical Plan
- Teaching Labs

Wrap Up

Center Lab Bays: Islands are 22'-2" x 5'. Benches at walls are the length of the room



Casework Elevation: Walls have 3 @48" base and wall cabinets with 3" filler panels at ends



Room Layouts : Three End Classrooms

Day 18 Project 17

Overview

Counter Tops

- Load
- Duplicate
- Position
- Align & Length

▪Layout Options

Cabinets

- Base & Wall
- Base Cabinets
- Wall Cabinets

Island & Wall Benches

- Elevation
- View Depth

▪Center Labs

▪Classrooms

▪Hung Ceilings

- Origin & Location
- Lights & Supply/Return

▪Double Bay

▪View Range

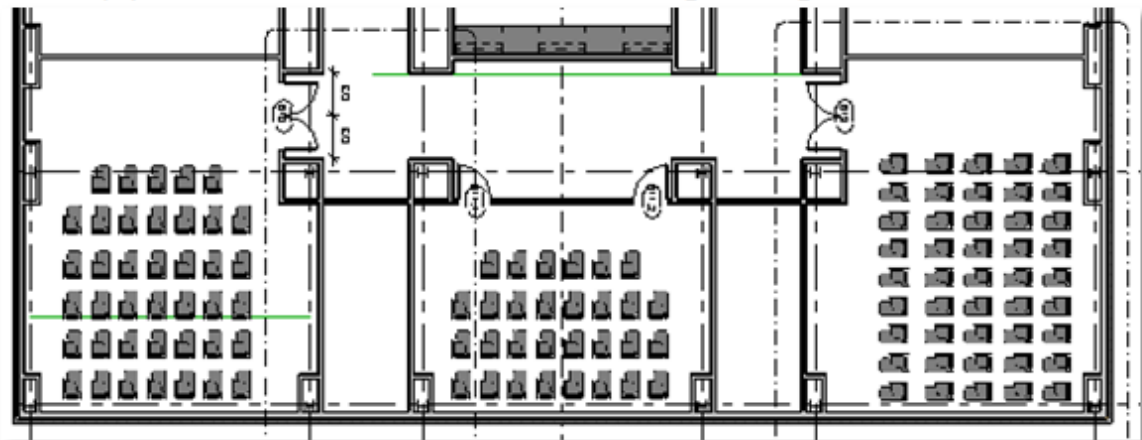
- Location
- Lights

▪Typical Plan

▪Teaching Labs

Wrap Up

End Classrooms: Three (3) end classrooms with flexible seating arrangements



Reflected Ceiling Plans: Laboratories

Day 18 Project 17

Overview

Counter Tops

- Load
- Duplicate
- Position
- Align & Length

▪Layout Options

Cabinets

- Base & Wall
- Base Cabinets
- Wall Cabinets

Island & Wall Benches

- Elevation
- View Depth

▪Center Labs

▪Classrooms

▪Hung Ceilings

- Origin & Location
- Lights & Supply/Return

▪Double Bay

- View Range
- Location
- Lights

- Typical Plan
- Teaching Labs

Wrap Up

Hung Ceilings: Hung Ceilings include grids, lights, supply & return ducts, sprinkler heads etc.



- Load
- Duplicate
- Position
- Align & Length

- Base & Wall
- Base Cabinets
- Wall Cabinets

- Elevation
- View Depth

- Center Labs
- Classrooms

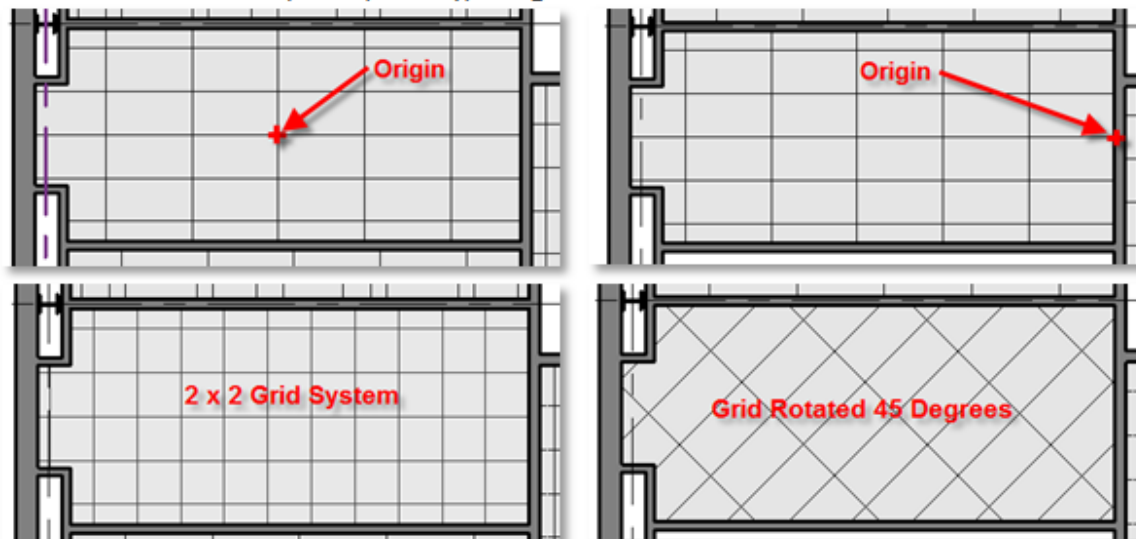
- Hung Ceilings
- Origin & Location
- Lights & Supply/Return

- View Range
- Location
- Lights

- Typical Plan
- Teaching Labs

Reflected Ceiling Plans: Origin & Location

Ceilings Grid: Consider Grid Size (2 x 4, 2 x 2), Origin and Rotation



Reflected Ceiling Plans: Lights & Supply/Return

Day 18 Project 17

Overview

Counter Tops

- Load
- Duplicate
- Position
- Align & Length

▪Layout Options

Cabinets

- Base & Wall
- Base Cabinets
- Wall Cabinets

Island & Wall Benches

- Elevation
- View Depth

- Center Labs
- Classrooms

- Hung Ceilings
- Origin & Location
- Lights & Supply/Return

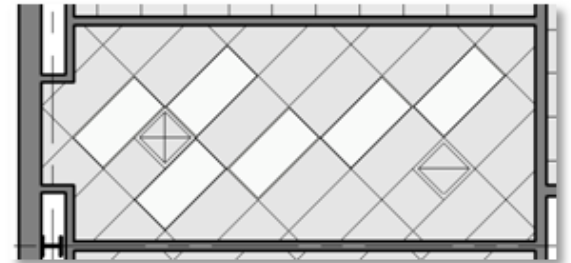
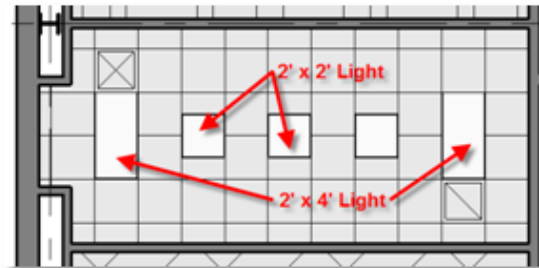
- Double Bay

- View Range
- Location
- Lights

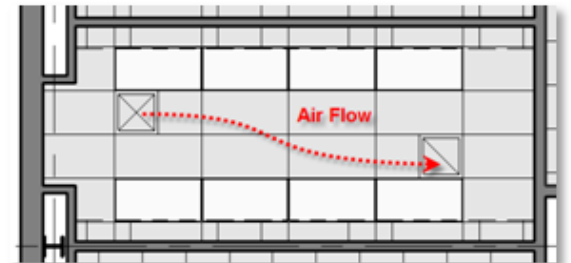
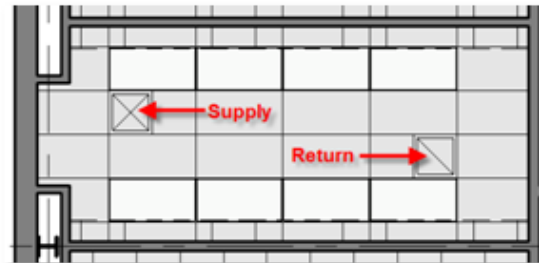
- Typical Plan
- Teaching Labs

Wrap Up

Lights: Lights work with the grid



Supply/Return: Air flows from the supply duct towards the return duct



Reflected Ceiling Plans: Laboratory Double-Bay

Day 18 Project 17

Overview

Counter Tops

- Load
- Duplicate
- Position
- Align & Length

Layout Options

Cabinets

- Base & Wall
- Base Cabinets
- Wall Cabinets

Island & Wall Benches

- Elevation
- View Depth

Center Labs

Classrooms

- Hung Ceilings
- Origin & Location
- Lights & Supply/Return

Double Bay

- View Range
- Location
- Lights

- Typical Plan
- Teaching Labs

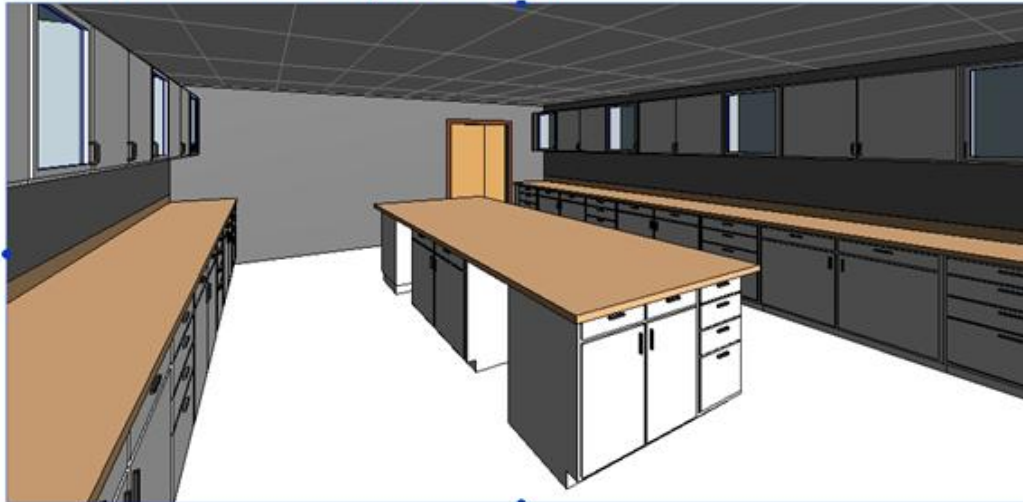
Wrap Up

3d Perspective:

View of Double Lab looking toward exterior Window Wall



View of Double Lab looking toward door



Reflected Ceiling Plans: Laboratory Double-Bay

Day 18 Project 17

Overview

Counter Tops

- Load
- Duplicate
- Position
- Align & Length

▪Layout Options

Cabinets

- Base & Wall
- Base Cabinets
- Wall Cabinets

Island & Wall Benches

- Elevation
- View Depth

- Center Labs
- Classrooms

- Hung Ceilings
- Origin & Location
- Lights & Supply/Return

▪Double Bay

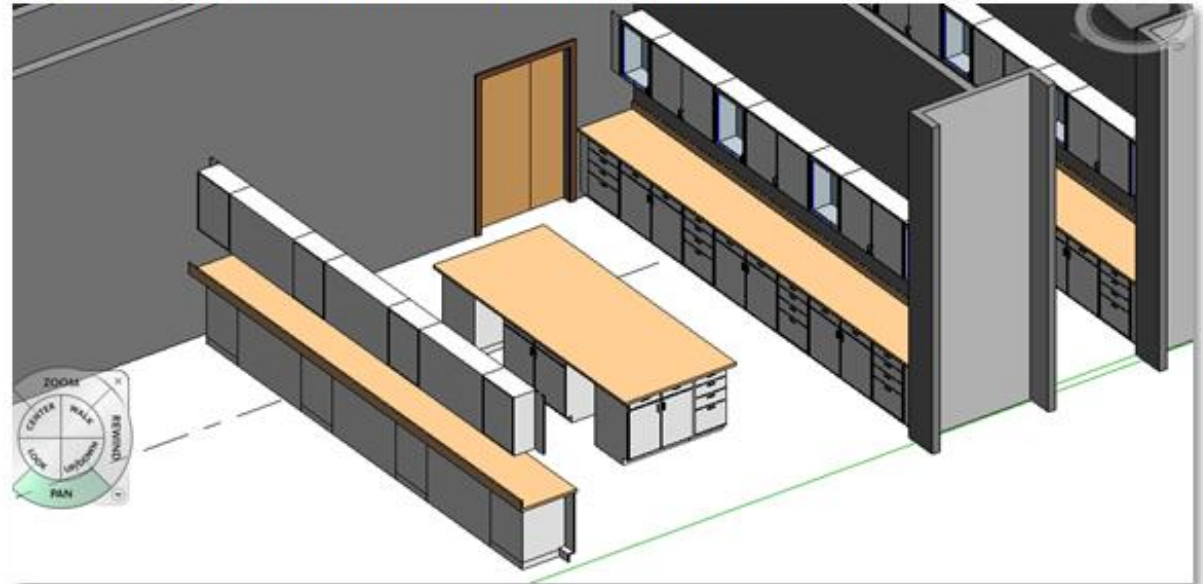
- View Range
- Location
- Lights

- Typical Plan
- Teaching Labs

Wrap Up

Isometric View

Isometric view of Double Lab from building exterior



Reflected Ceiling Plans: View Range : Default Depth

Day 18 Project 17

Overview

Counter Tops

- Load
- Duplicate
- Position
- Align & Length

▪Layout Options

Cabinets

- Base & Wall
- Base Cabinets
- Wall Cabinets

Island & Wall Benches

- Elevation
- View Depth

- Center Labs
- Classrooms

- Hung Ceilings
- Origin & Location
- Lights & Supply/Return

▪Double Bay

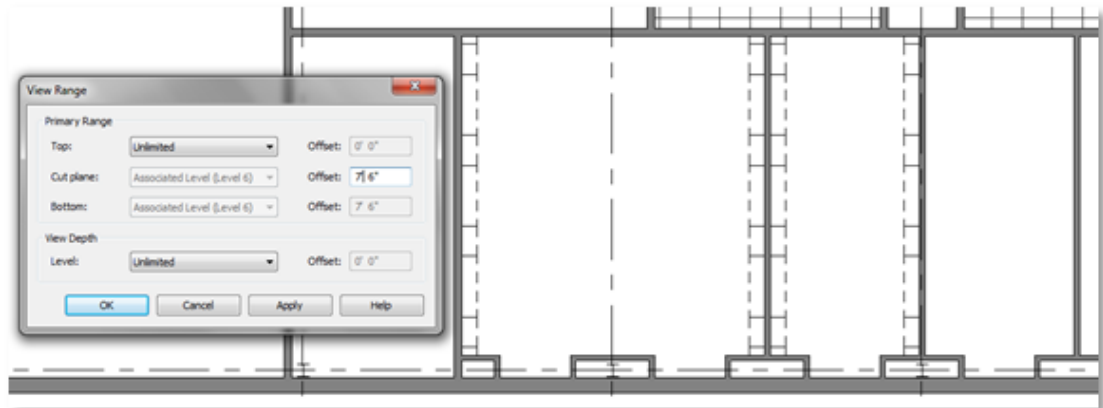
- View Range
- Location
- Lights

- Typical Plan
- Teaching Labs

Wrap Up

Default Depth:

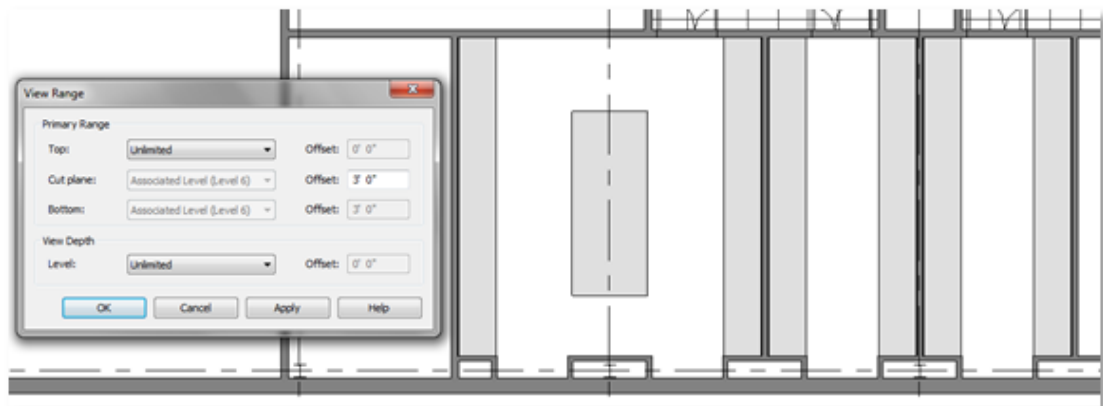
The default view depth of 7'-6" does not allow us to see the lab counters.



Adjust View Depth:

Set the view offset to 3'-0" so the lab counters are visible.

When done set the offset back to the default of 7'-6"



Reflected Ceiling Plans: Laboratories : Location

Day 18 Project 17

Overview

Counter Tops

- Load
- Duplicate
- Position
- Align & Length

•Layout Options

Cabinets

- Base & Wall
- Base Cabinets
- Wall Cabinets

Island & Wall Benches

- Elevation
- View Depth

- Center Labs
- Classrooms

- Hung Ceilings
- Origin & Location
- Lights & Supply/Return

•Double Bay

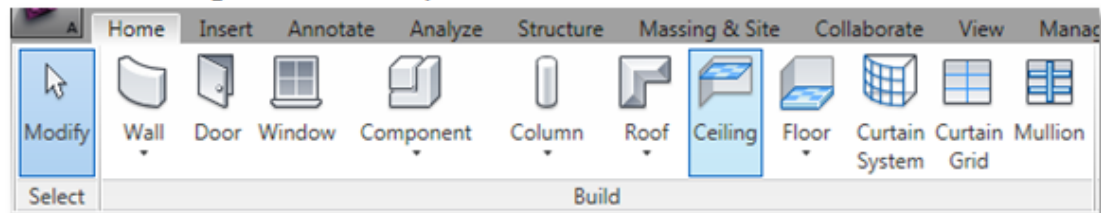
- View Range
- Location
- Lights

- Typical Plan
- Teaching Labs

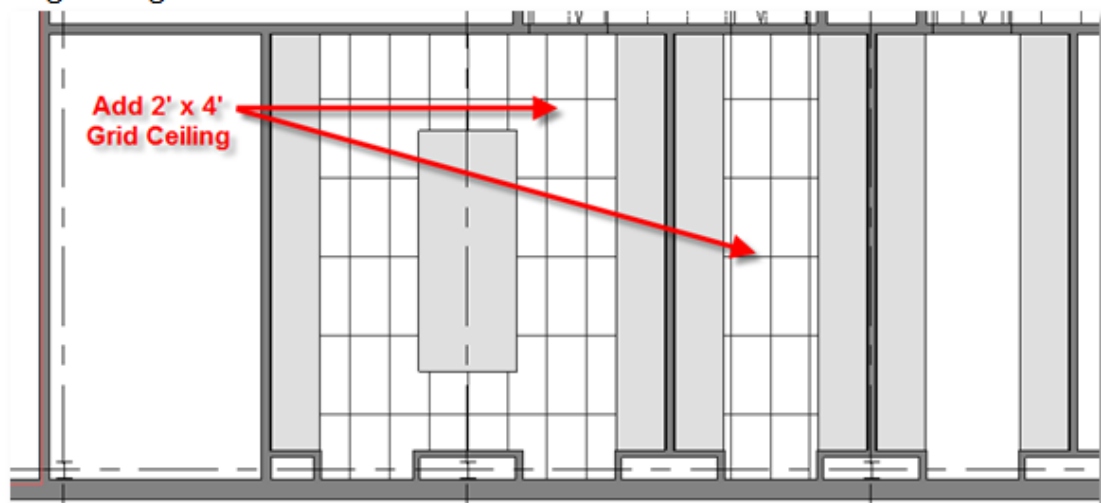
Wrap Up

Place Ceiling:

Home > Ceiling > 2 x 4 ACT system



Align the grid on the center of the rooms



Reflected Ceiling Plans: Lights & Supply/Return

Day 18 Project 17

Overview

Counter Tops

- Load
- Duplicate
- Position
- Align & Length

•Layout Options

Cabinets

- Base & Wall
- Base Cabinets
- Wall Cabinets

Island & Wall Benches

- Elevation
- View Depth

- Center Labs
- Classrooms

- Hung Ceilings
- Origin & Location
- Lights & Supply/Return

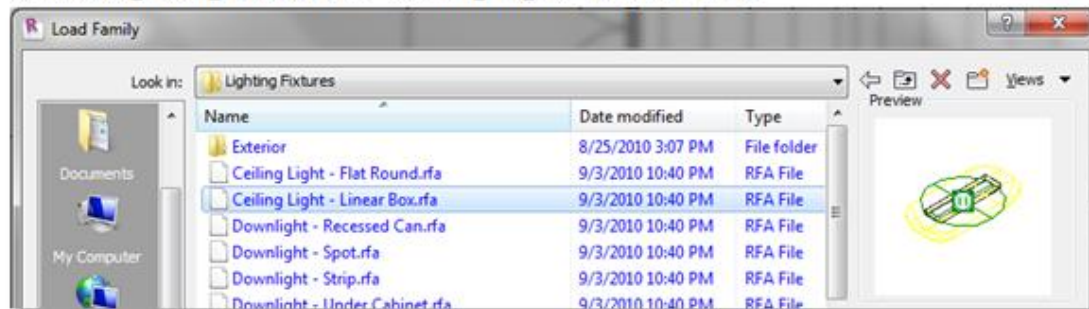
•Double Bay

- View Range
- Location
- Lights

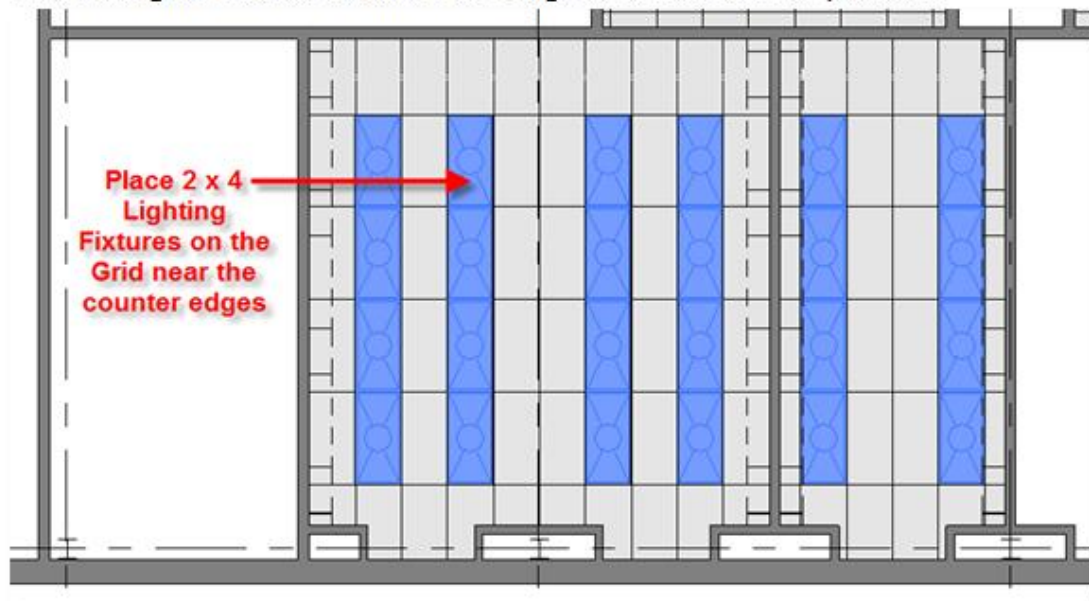
- Typical Plan
- Teaching Labs

Wrap Up

Load Family: Select **Lighting Fixtures > Ceiling Light - Linear Box**



Add Lights: Add the light fixtures to the labs. Align and Rotate into position



Day 18 Project 17

Overview

Counter Tops

- Load
- Duplicate
- Position
- Align & Length

▪Layout Options

Cabinets

- Base & Wall
- Base Cabinets
- Wall Cabinets

Island & Wall Benches

- Elevation
- View Depth

- Center Labs
- Classrooms

- Hung Ceilings
- Origin & Location
- Lights & Supply/Return

▪Double Bay

- View Range
- Location
- Lights

- Typical Plan
- Teaching Labs

Wrap Up

Reflected Ceiling Plans: Laboratories w/ Lights

Perspective View:

View showing the addition of the 2' x 4' boxed lights



Reflected Ceiling Plans: Lights & Supply/Return

Day 18 Project 17

Overview

Counter Tops

- Load
- Duplicate
- Position
- Align & Length

•Layout Options

Cabinets

- Base & Wall
- Base Cabinets
- Wall Cabinets

Island & Wall Benches

- Elevation
- View Depth

- Center Labs
- Classrooms

•Hung Ceilings

- Origin & Location
- Lights & Supply/Return

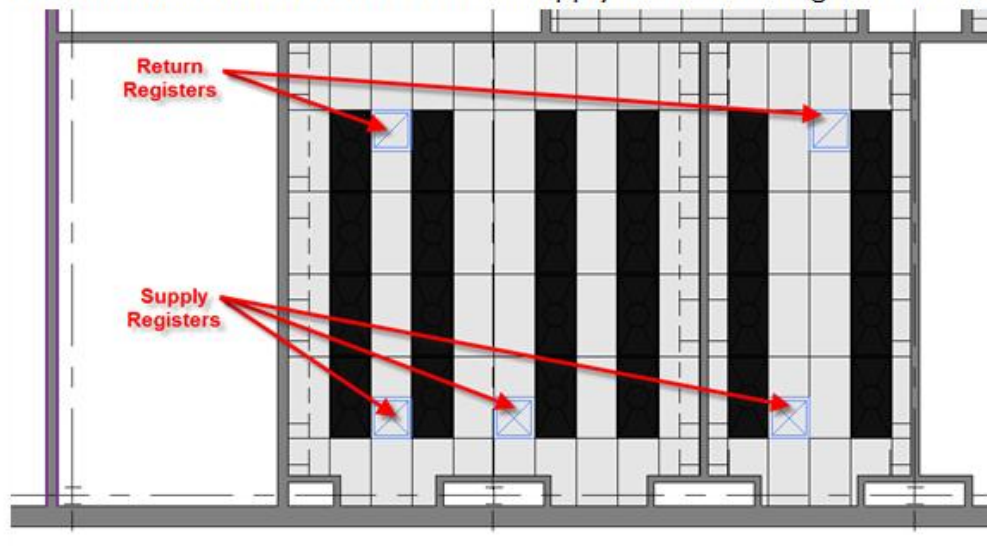
•Double Bay

- View Range
- Location
- Lights

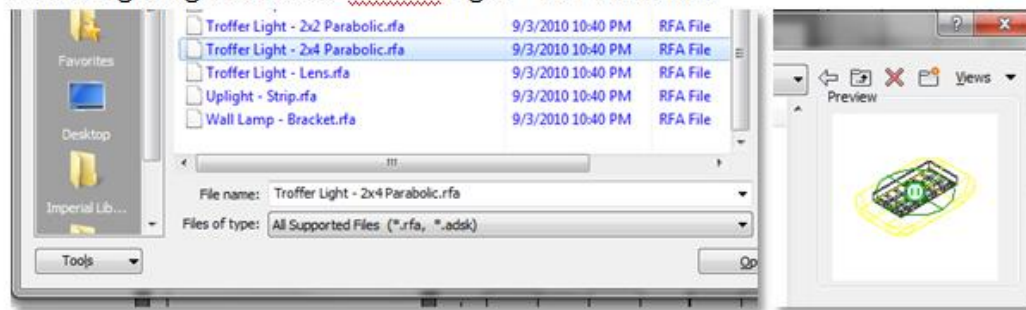
- Typical Plan
- Teaching Labs

Wrap Up

Add Mechanical: Load the Mechanical families and add Supply and Return Registers in each Lab.



Load Family: Select Lighting Fixtures > Troffer Light - 2x4 Parabolic



Day 18 Project 17

Overview

Counter Tops

- Load
- Duplicate
- Position
- Align & Length

▪Layout Options

Cabinets

- Base & Wall
- Base Cabinets
- Wall Cabinets

Island & Wall Benches

- Elevation
- View Depth

- Center Labs
- Classrooms

- Hung Ceilings
- Origin & Location
- Lights & Supply/Return

▪Double Bay

- View Range
- Location
- Lights

- Typical Plan
- Teaching Labs

Wrap Up

Reflected Ceiling Plans: Lights & Supply/Return

Updated View: Perspective view showing the Parabolic Troffer Lights & Mechanical Registers



Reflected Ceiling Plans: Typical Plan Options

Day 18 Project 17

Overview

Counter Tops

- Load
- Duplicate
- Position
- Align & Length

•Layout Options

Cabinets

- Base & Wall
- Base Cabinets
- Wall Cabinets

Island & Wall Benches

- Elevation
- View Depth

- Center Labs
- Classrooms

- Hung Ceilings
- Origin & Location
- Lights & Supply/Return

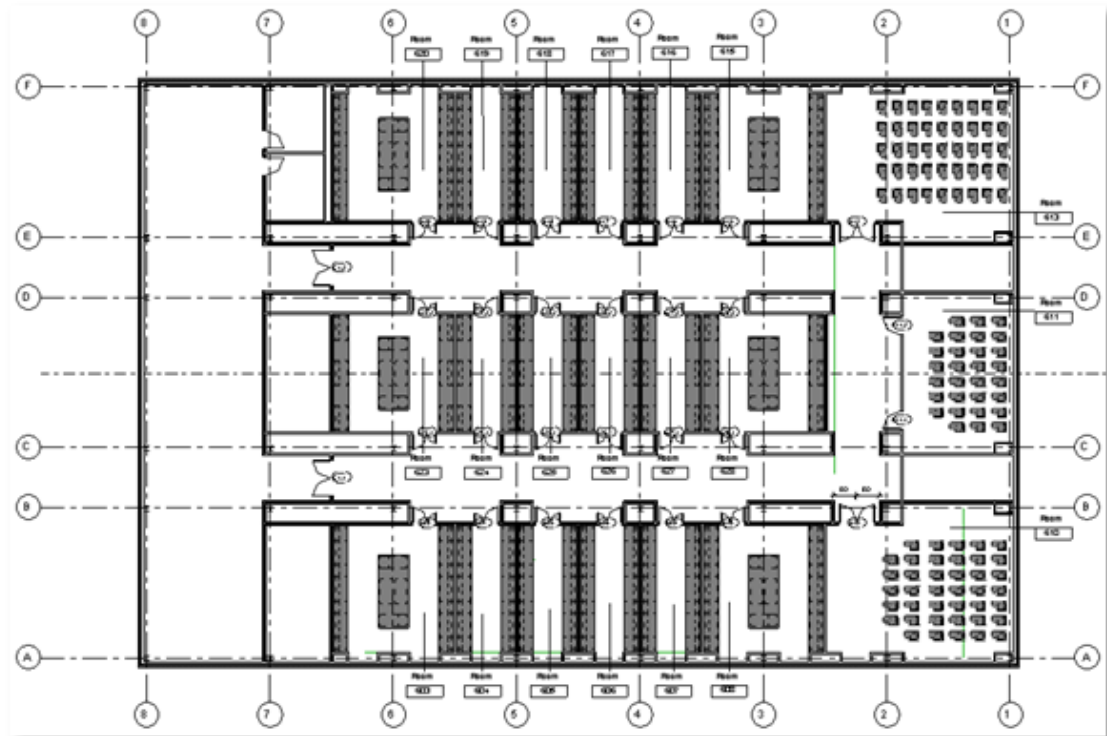
•Double Bay

- View Range
- Location
- Lights

- Typical Plan
- Teaching Labs

Wrap Up

3rd to 6th floors: After we have completed the 6th level we will make copy it to create the remaining typical floors levels 3 through 6.



Reflected Ceiling Plans: Teaching Labs : Center

Day 18 Project 17

Overview

Counter Tops

- Load
- Duplicate
- Position
- Align & Length

•Layout Options

Cabinets

- Base & Wall
- Base Cabinets
- Wall Cabinets

Island & Wall Benches

- Elevation
- View Depth

•Center Labs

•Classrooms

- Hung Ceilings
- Origin & Location
- Lights & Supply/Return

•Double Bay

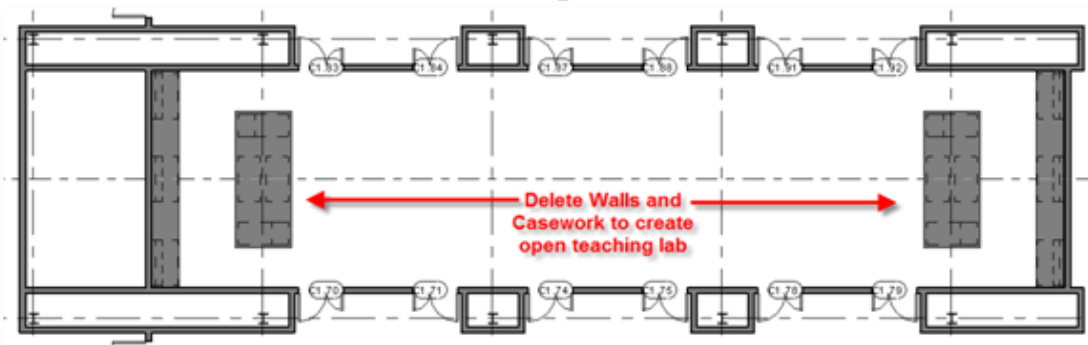
- View Range
- Location
- Lights

- Typical Plan
- Teaching Labs

Wrap Up

Center Suite:

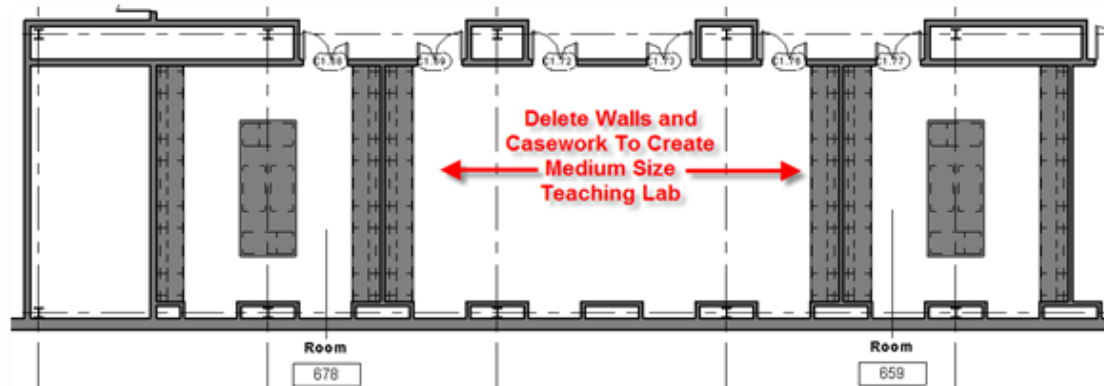
Create a single large open teaching lab in the center lab suite by deleting the middle walls and casework and adding additional islands.



Array the Islands:

Array the islands across at a spacing of 10'-3" to complete the lab.





Reflected Ceiling Plans: Teaching Labs : Side Bays

Day 18 Project 17

Overview

Counter Tops

- Load
- Duplicate
- Position
- Align & Length

•Layout Options

Cabinets

- Base & Wall
- Base Cabinets
- Wall Cabinets

Island & Wall Benches

- Elevation
- View Depth

- Center Labs
- Classrooms

- Hung Ceilings
- Origin & Location
- Lights & Supply/Return

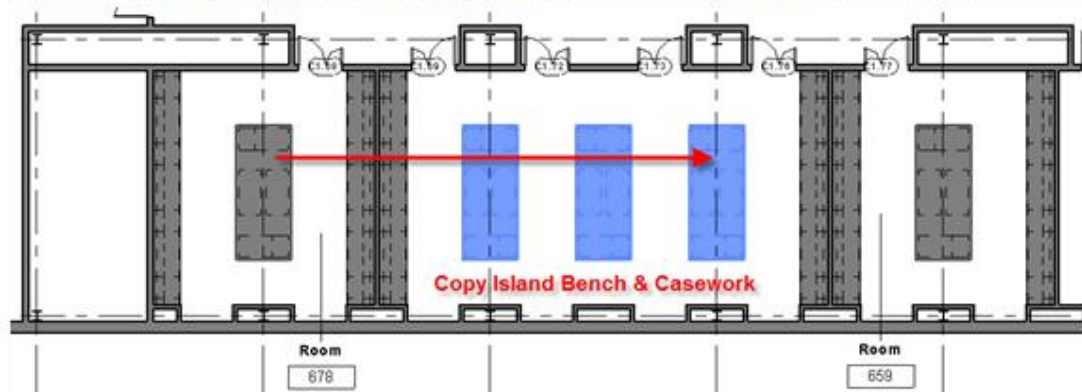
•Double Bay

- View Range
- Location
- Lights

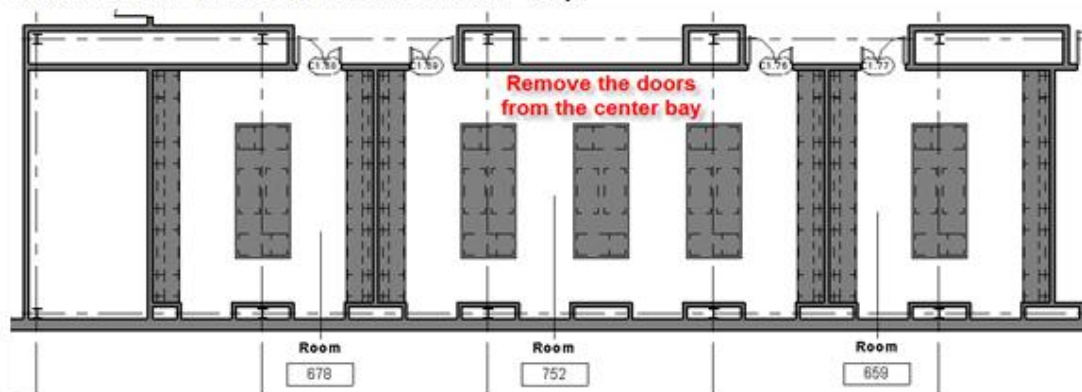
- Typical Plan
- Teaching Labs

Wrap Up

Array the Islands: Array the islands across at a spacing of 10'-3" to complete the lab.



Remove Doors: Remove the doors from the center bay.



Reflected Ceiling Plans: Teaching Plan Options

Day 18 Project 17

Overview

Counter Tops

- Load
- Duplicate
- Position
- Align & Length

•Layout Options

Cabinets

- Base & Wall
- Base Cabinets
- Wall Cabinets

Island & Wall Benches

- Elevation
- View Depth

- Center Labs
- Classrooms

- Hung Ceilings
- Origin & Location
- Lights & Supply/Return

•Double Bay

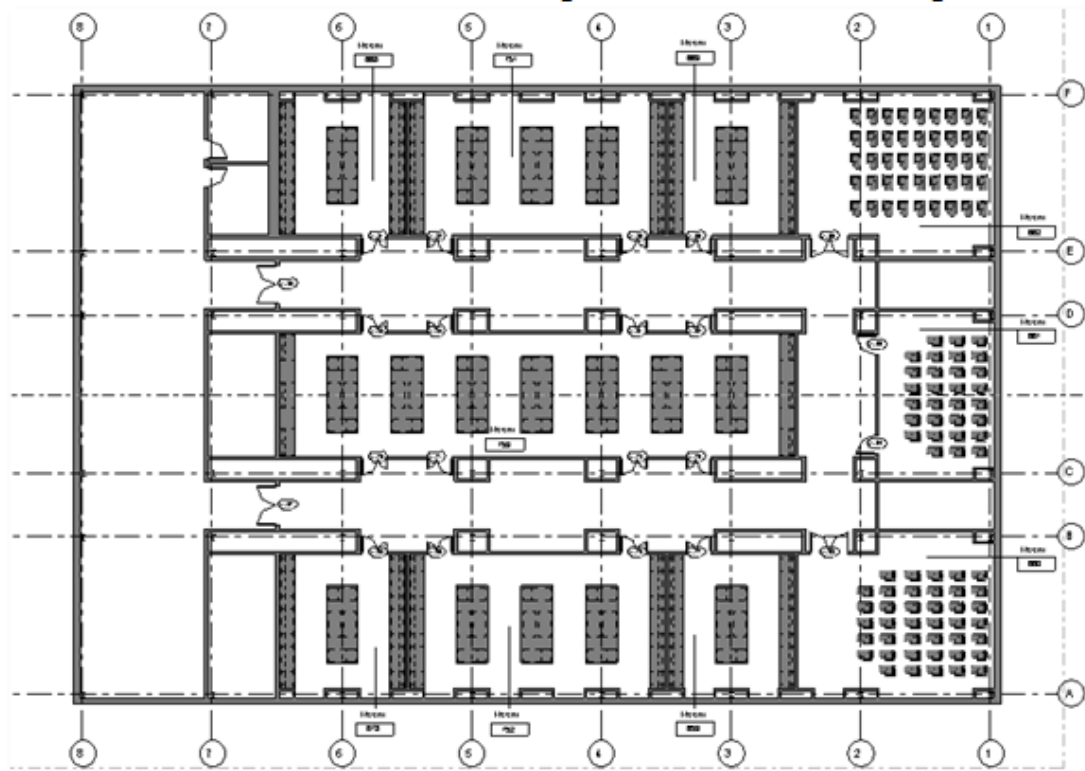
- View Range
- Location
- Lights

- Typical Plan
- Teaching Labs

Wrap Up

1st & 2nd Floors:

The lower two floors will be dedicated to teaching labs. We will remove some of the walls and doors and make 1 large and 2 medium teaching laboratories.



Day 18 Project 17

Overview

Counter Tops

- Load
- Duplicate
- Position
- Align & Length

▪Layout Options

Cabinets

- Base & Wall
- Base Cabinets
- Wall Cabinets

Island & Wall Benches

- Elevation
- View Depth

- Center Labs
- Classrooms

- Hung Ceilings
- Origin & Location
- Lights & Supply/Return

▪Double Bay

- View Range
- Location
- Lights

- Typical Plan
- Teaching Labs

Wrap Up

Day 18 - Wrap Up

Overview

Counter Tops

- Load
- Duplicate
- Position
- Align & Length

▪Layout Options

Cabinets

- Base & Wall
- Base Cabinets
- Wall Cabinets

Island & Wall Benches

- Elevation
- View Depth

- Center Labs
- Classrooms
- Hung Ceilings
- Origin & Location
- Lights & Supply/Return

▪Double Bay

- View Range
- Location
- Lights

- Typical Plan
- Teaching Labs