

The
5 Perceptual Skills
of Drawing

Today's Skill:

1 The Perception of **Edges**

2 The Perception of **Spaces**

3 The Perception of **Relationships**

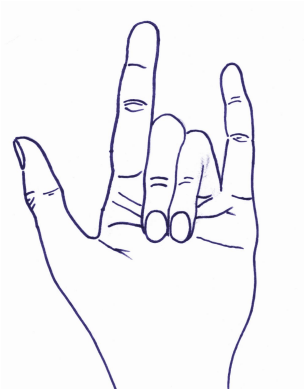
4 The Perception of **Shadow & Light**

5 The Perception of **The Whole Form**

05

Perception of **The Whole Form**

Putting it all together!



01

Edges

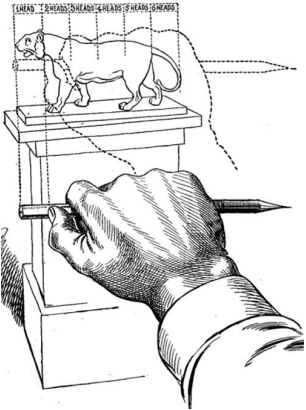
- Left vs Right Brain
- Shared Boundaries
- Contour Line



02

Spaces

- Pictorial Space
- Depth
- Positive & Negative space



03

Relationships

- Sighting
- Perspective
- Foreshortening

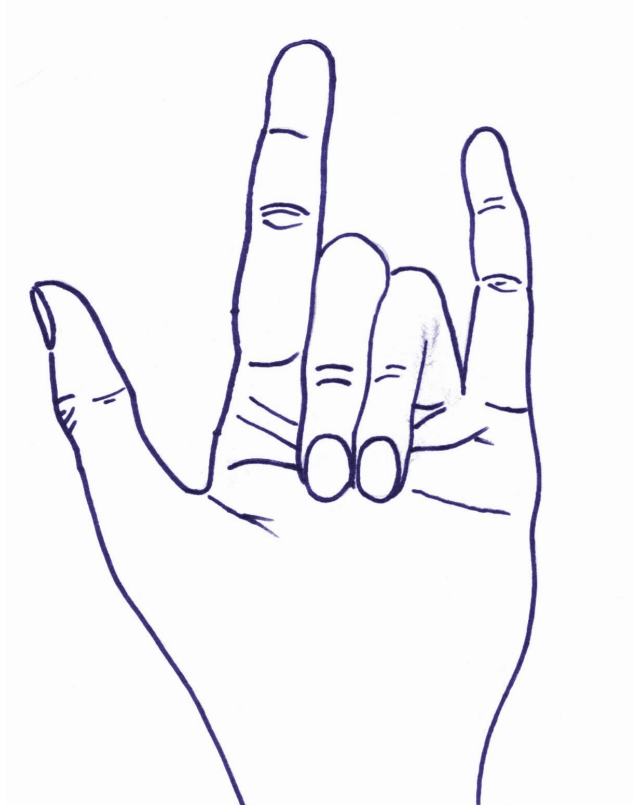


04

Shadow & Light

- Clarity, Mood, Concept
- Value
- Direct Lighting vs. Ambient

Perception of Edges



Left Brain vs Right Brain

The **Left Brain** perceives this logically as, “a hand.”

The **Right Brain** perceives this creatively as, “a contour drawing.”

Shared Boundaries

Within a drawing, **edges can be shared** in order to imply & simplify.

Contour Line

A drawing that **defines a shape or edge through outline.**

Perception of Spaces

Pictorial Space

The **depth**, aka the **distance we perceive between objects**, within an image. Can be representational or graphic.

Depth

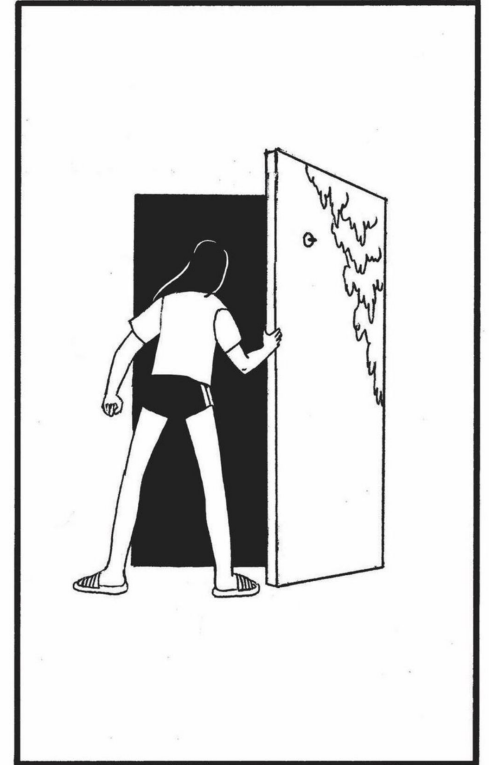
Drawings are not three dimensional so we use **secondary clues** in an image to **perceive depth**:

- **Relative size**
- **Overlap**
- **Light & Shadow**
- **Atmospheric Haze**

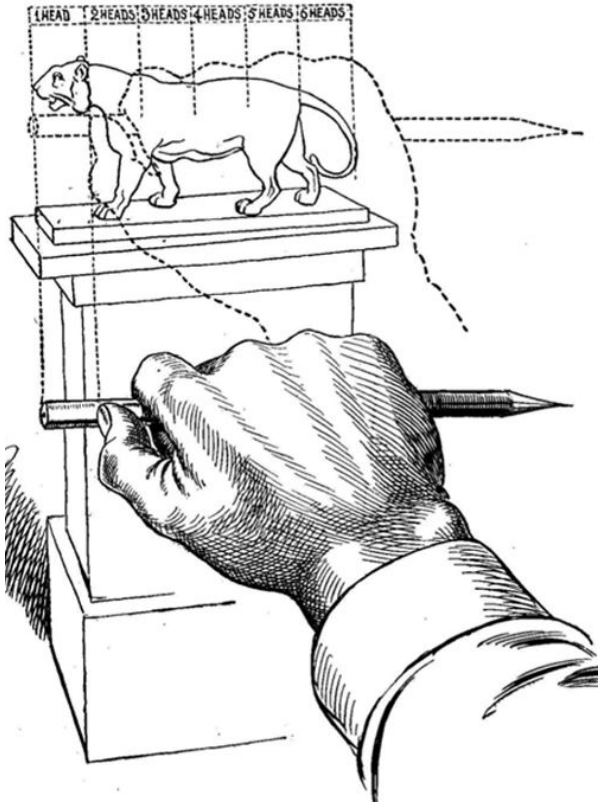
Positive & Negative Space

Positive: The subject, contains the **most visual weight**.

Negative: The **empty gaps** between objects.



Perception of Relationships



Sighting

Using **live techniques** to **measure distances, proportions, and angles.**

Perspective

The way our **brain perceives known objects' shapes** in space from **different vantage points.**

Foreshortening

The way our **brain perceives proportions, dimensions, and size** from **different vantage points.**

Perception of Light & Shadow

Clarity, Mood, Concept

Light & shadow helps **clarify forms**, **create mood**, and **express conceptual ideas**.

Value

The **lightness** and **darkness** in an image.

Direct Lighting vs Ambient

Direct: A clear, **focused light** source. **High Contrast**.

Ambient: A **diffused light** source. **Low Contrast**.

