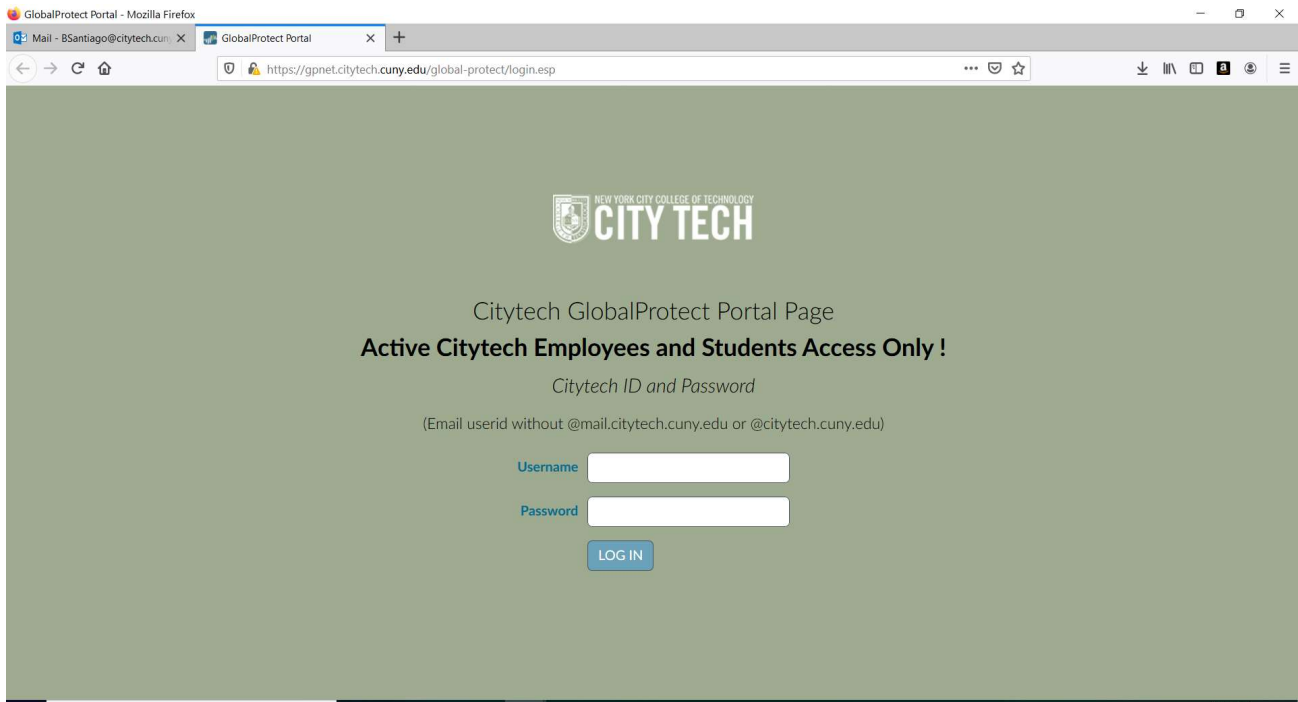


Instructions for accessing City Tech Virtual Lab resources.

To login into the LabStats from outside

User has to download the VPN <https://gpnet.citytech.cuny.edu>

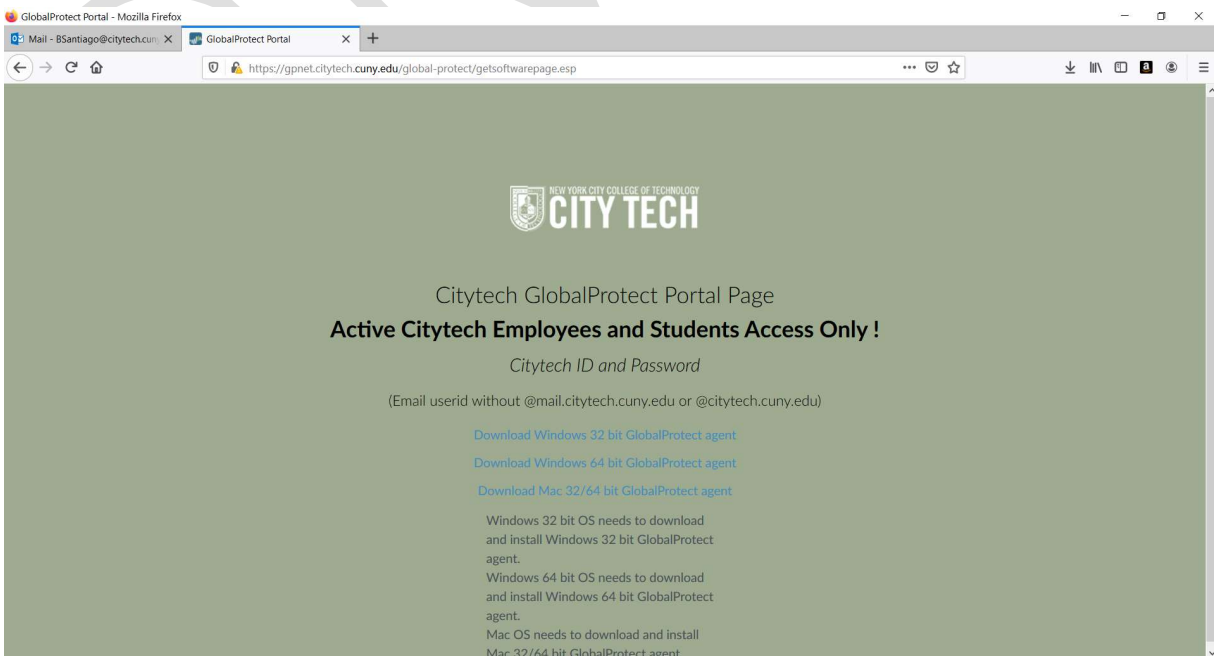
Use citytech email and password for fields below



The screenshot shows a web browser window with the URL <https://gpnet.citytech.cuny.edu/global-protect/login.esp>. The page features the City Tech logo and the text "Citytech GlobalProtect Portal Page" and "Active Citytech Employees and Students Access Only!". Below this, it prompts for "Citytech ID and Password" and provides instructions: "(Email userid without @mail.citytech.cuny.edu or @citytech.cuny.edu)". There are two input fields labeled "Username" and "Password", and a "LOG IN" button.

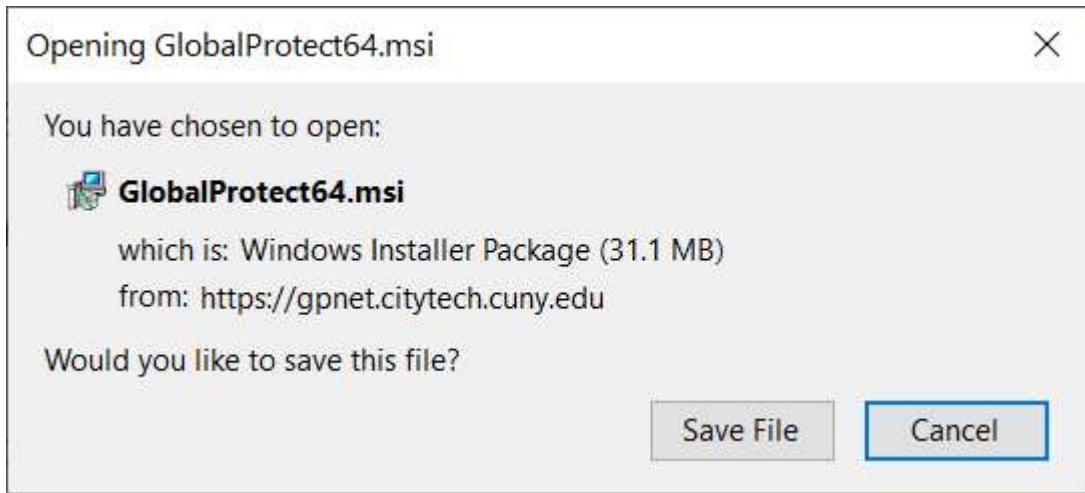
Download whichever file is relevant for windows you need to know if you have a 32 bit or 64 bit.

(to check whether your windows is 32 bit or 64 bit right click on start programs and go to settings)

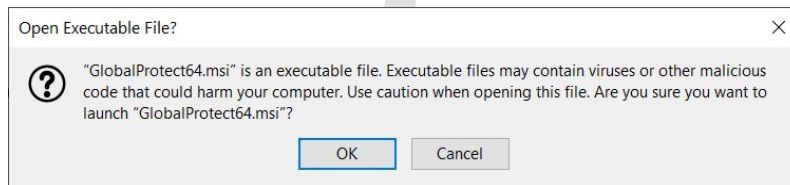


The screenshot shows a web browser window with the URL <https://gpnet.citytech.cuny.edu/global-protect/getsoftwarepage.esp>. The page features the City Tech logo and the text "Citytech GlobalProtect Portal Page" and "Active Citytech Employees and Students Access Only!". Below this, it prompts for "Citytech ID and Password" and provides instructions: "(Email userid without @mail.citytech.cuny.edu or @citytech.cuny.edu)". There are three download links: "Download Windows 32 bit GlobalProtect agent", "Download Windows 64 bit GlobalProtect agent", and "Download Mac 32/64 bit GlobalProtect agent". Below these links, there are instructions for each operating system: "Windows 32 bit OS needs to download and install Windows 32 bit GlobalProtect agent.", "Windows 64 bit OS needs to download and install Windows 64 bit GlobalProtect agent.", and "Mac OS needs to download and install Mac 32/64 bit GlobalProtect agent."

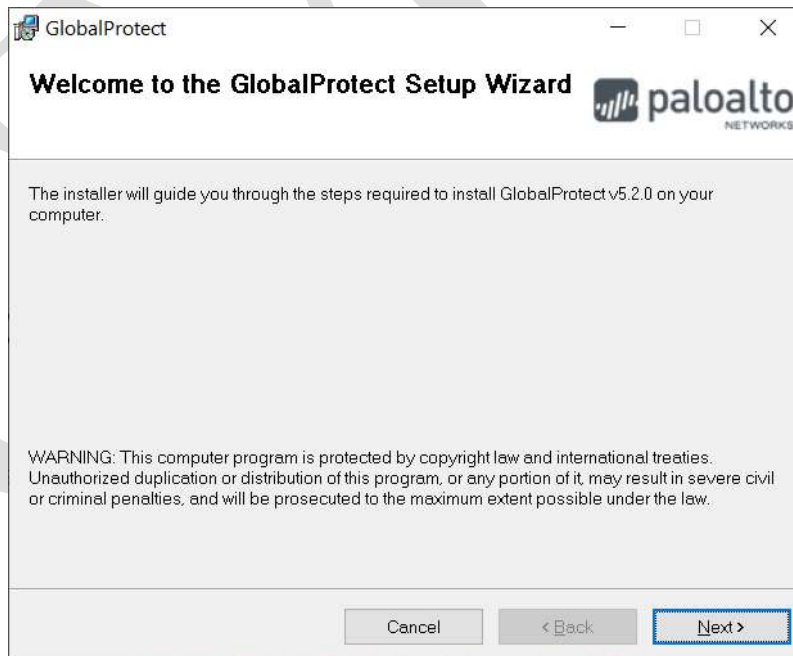
Select save file



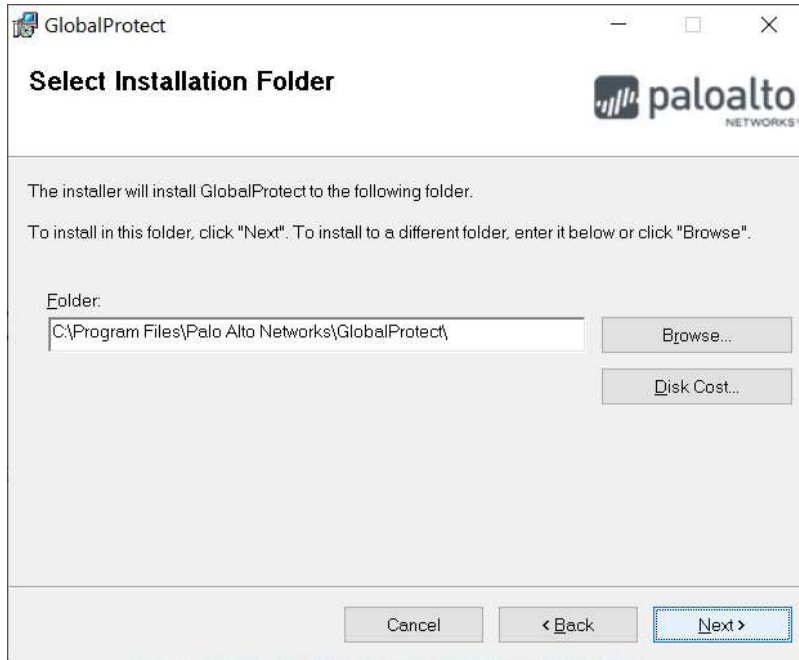
Open saved file. Select ok



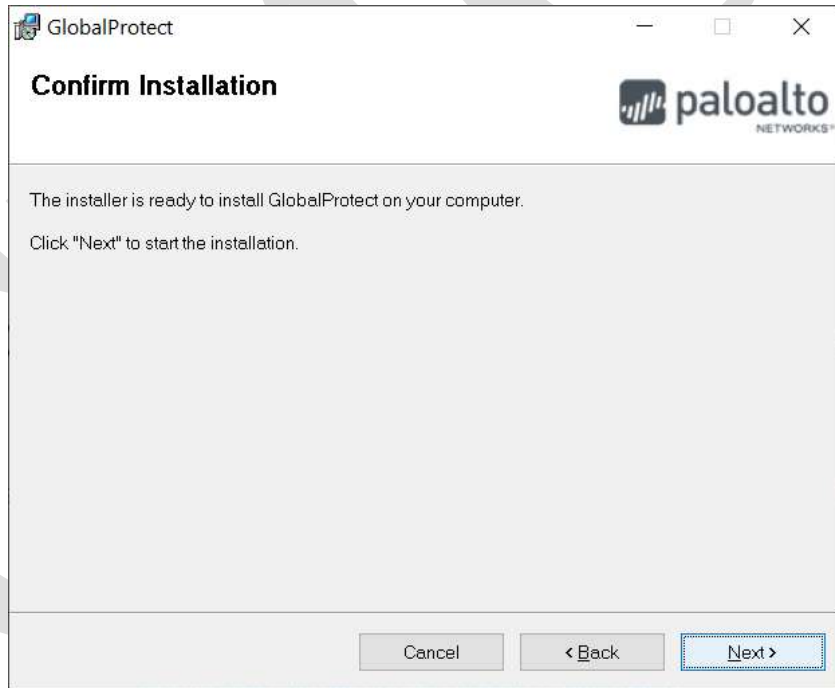
Select next



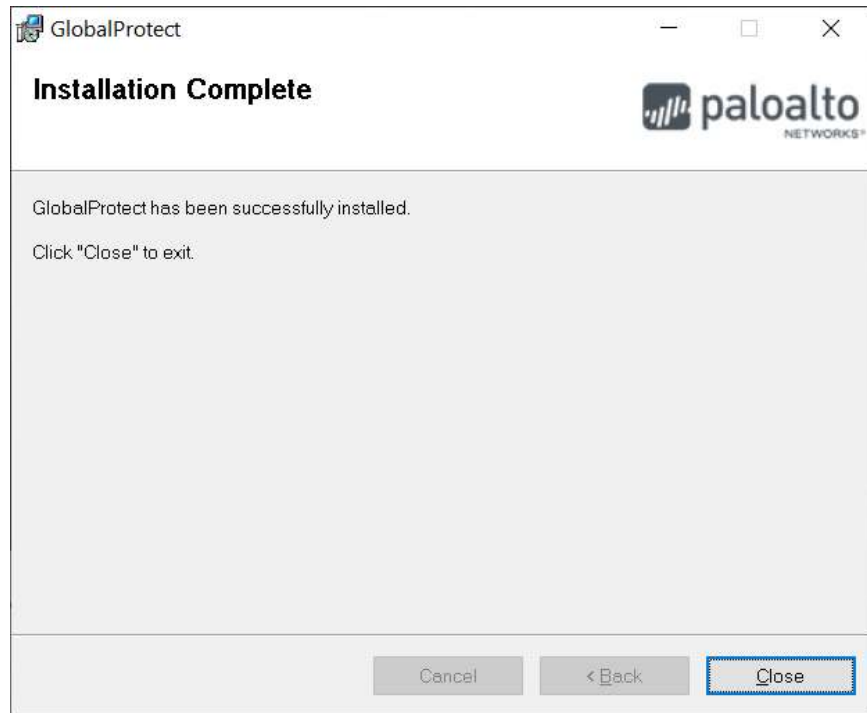
Select next



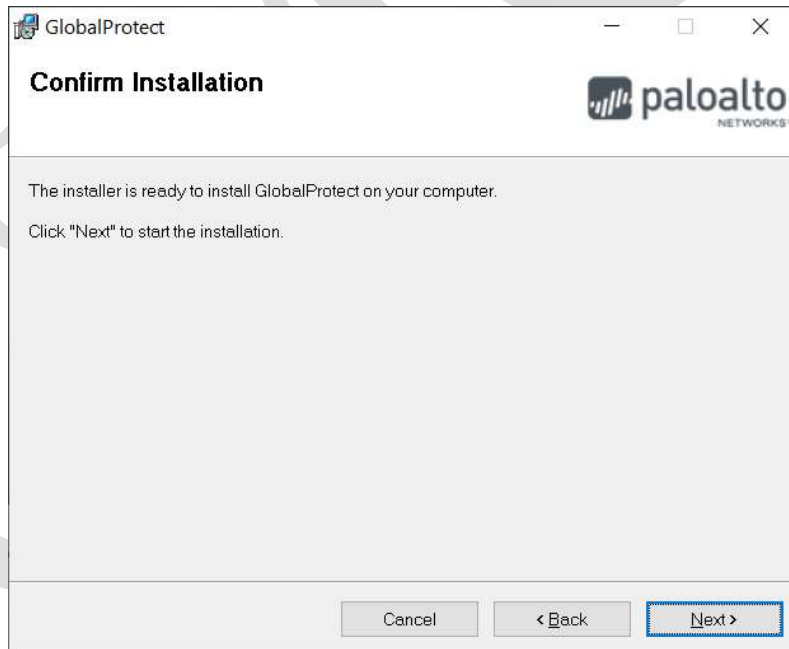
Select next



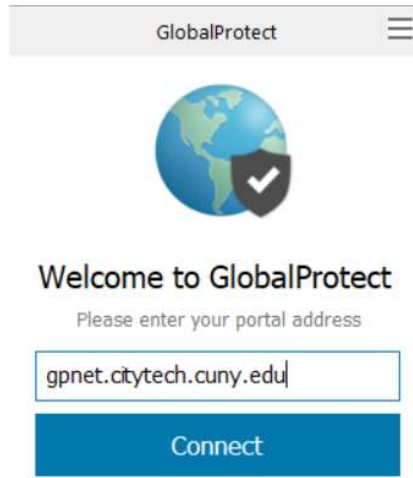
Select close




Select next



When box below opens up type in what is in box below. (gpnet.citytech.cuny.edu)Then select connect.



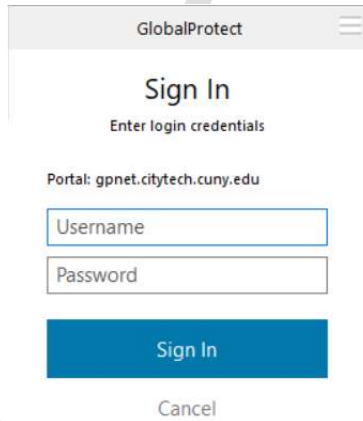
GlobalProtect



**Welcome to GlobalProtect**  
Please enter your portal address

**Connect**

Use your CUNY email credentials to populate fields below. Then select sign in.



GlobalProtect

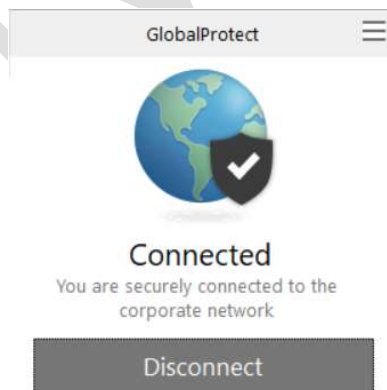
**Sign In**  
Enter login credentials

Portal: gpnet.citytech.cuny.edu


**Sign In**

Cancel

You are now connected



GlobalProtect

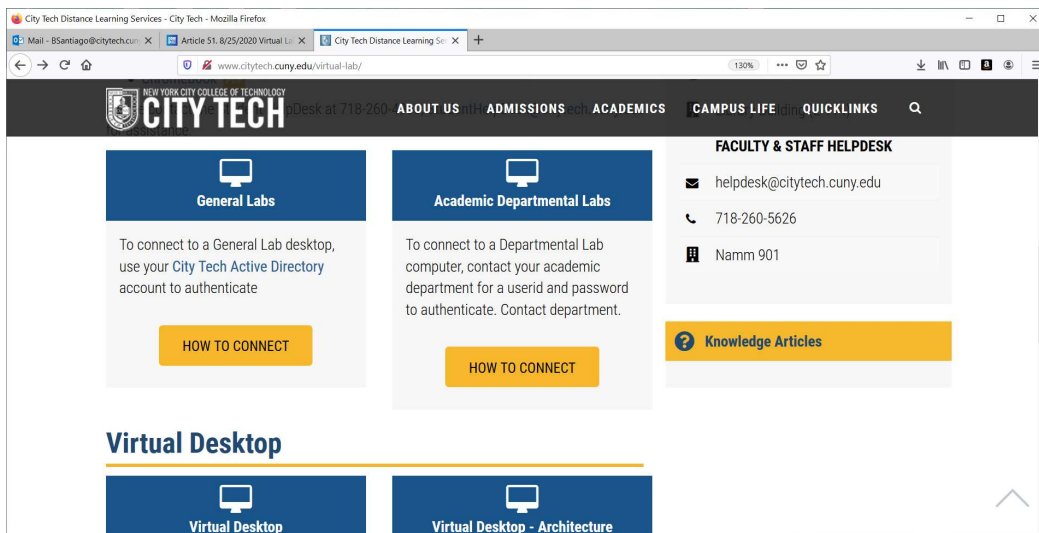


**Connected**  
You are securely connected to the corporate network

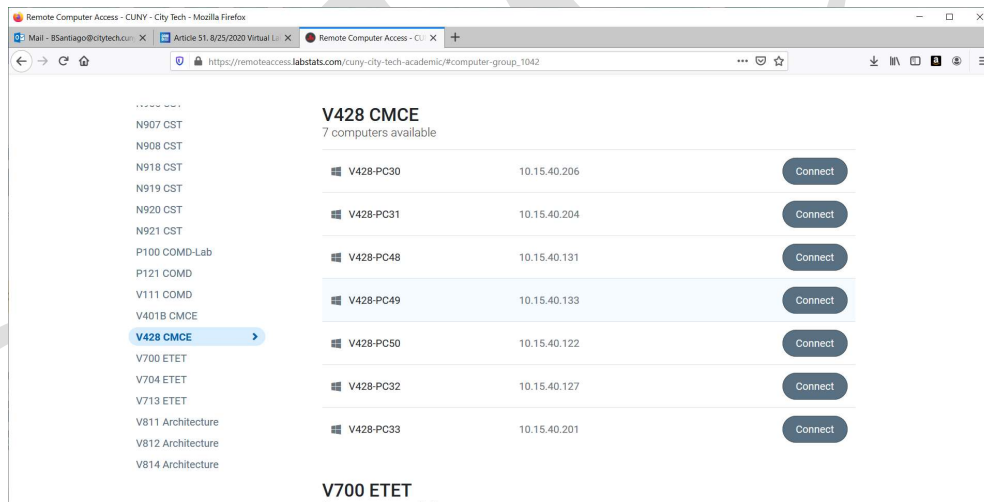
**Disconnect**

Once you are connected navigate to <http://www.citytech.cuny.edu/virtual-lab/> (Feel free to explore there is a lot of good information here including how to configure chromebooks, and macs, to access virtual City Tech lab computers)

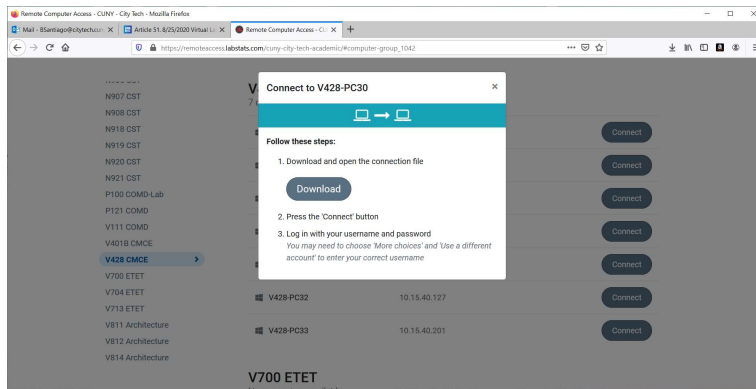
Select academic department labs.



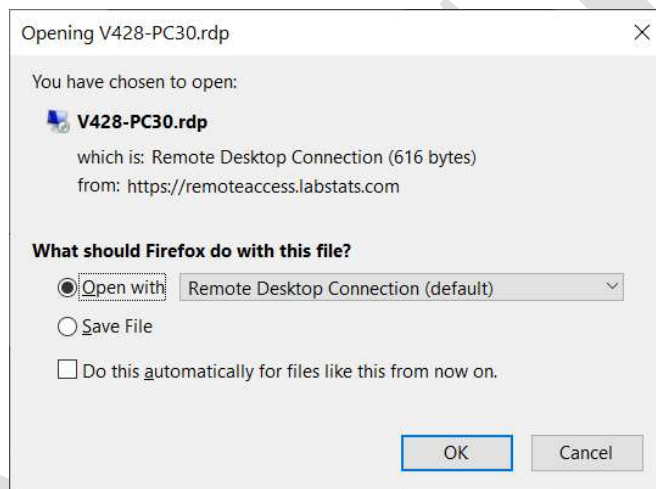
Scroll down to room v428 CMCE and select connect tab.



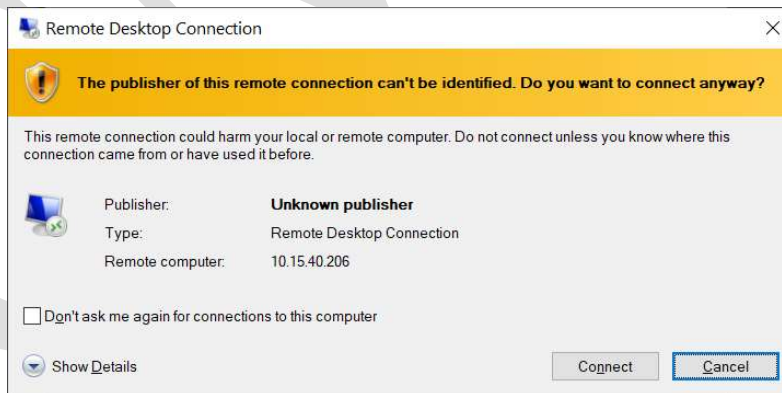
### Select download



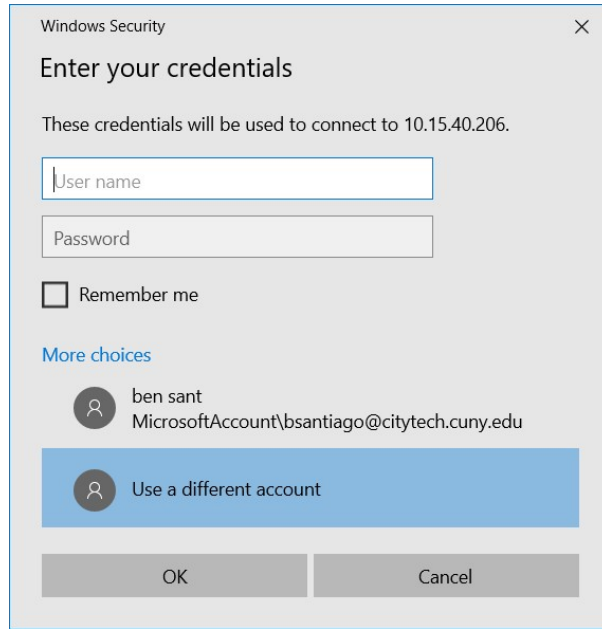
### Select ok



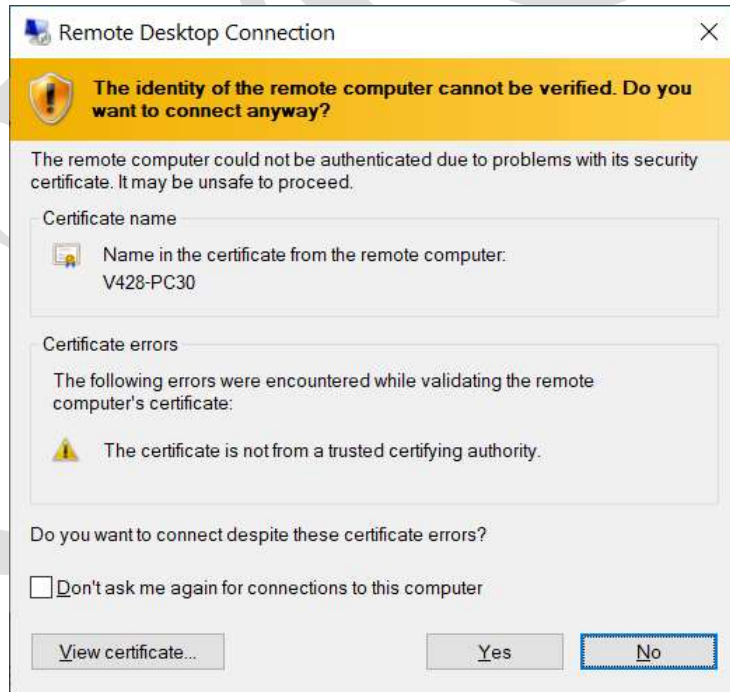
### Select connect



Select more choices. Use a different account and input **nyccct\** before your username then your **password (use your citytech email credentials)**.

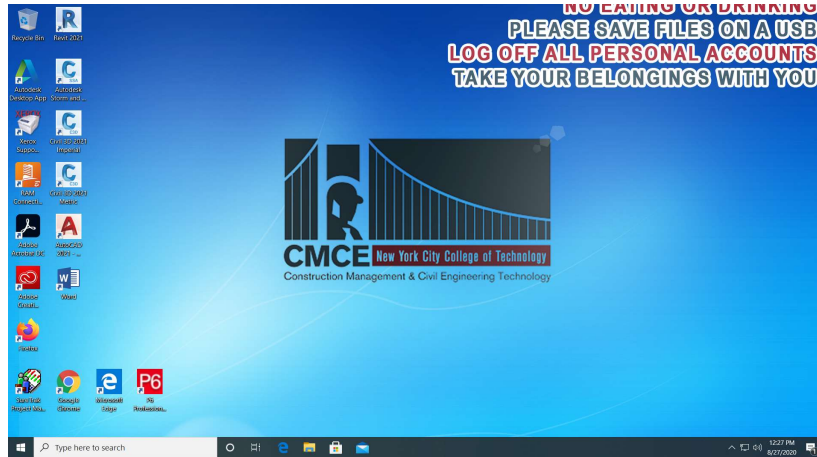


Select yes

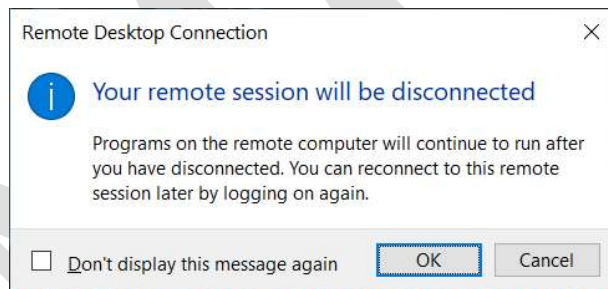




Congratulations you have arrived at CMCE Lab desktop. Student can use the software on the virtual desktop as if he was sitting in front of the computer in the lab.



When student is finished they should log off so other students could use the computer. Students should also be encouraged to save work often on there local drive or cloud. After student is done they should click x icon located on top of virtual desktop then window below will open and they should pick ok.



After clicking ok the student will then be logged of virtual machine so it is available for another student.

Some links which may be helpful.

<http://www.citytech.cuny.edu/virtual/>

<http://www.citytech.cuny.edu/virtual-lab/>