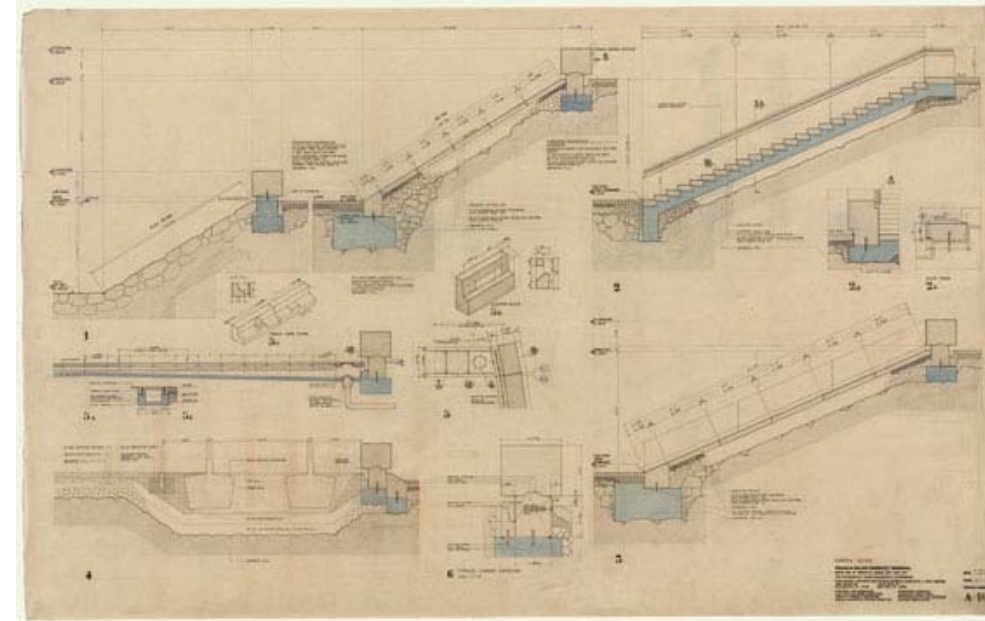
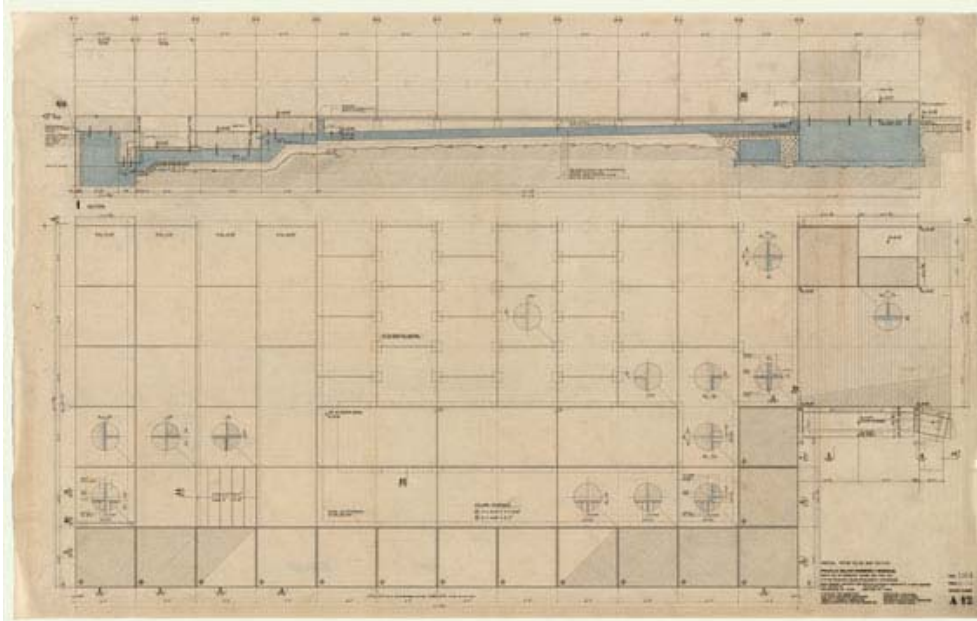
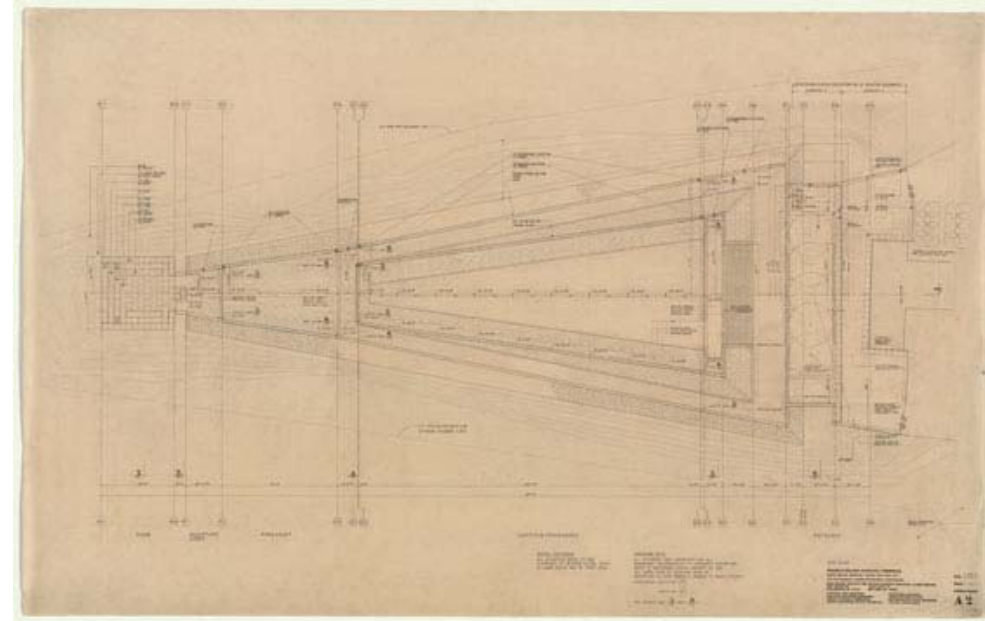


CMCE 1110: Construction Drawings I

Professor Anderson
nanderson@citytech.cuny.edu

REFERENCE: D.K.CHING, ARCHITECTURAL GRAPHICS



DRAWING STANDARDS:

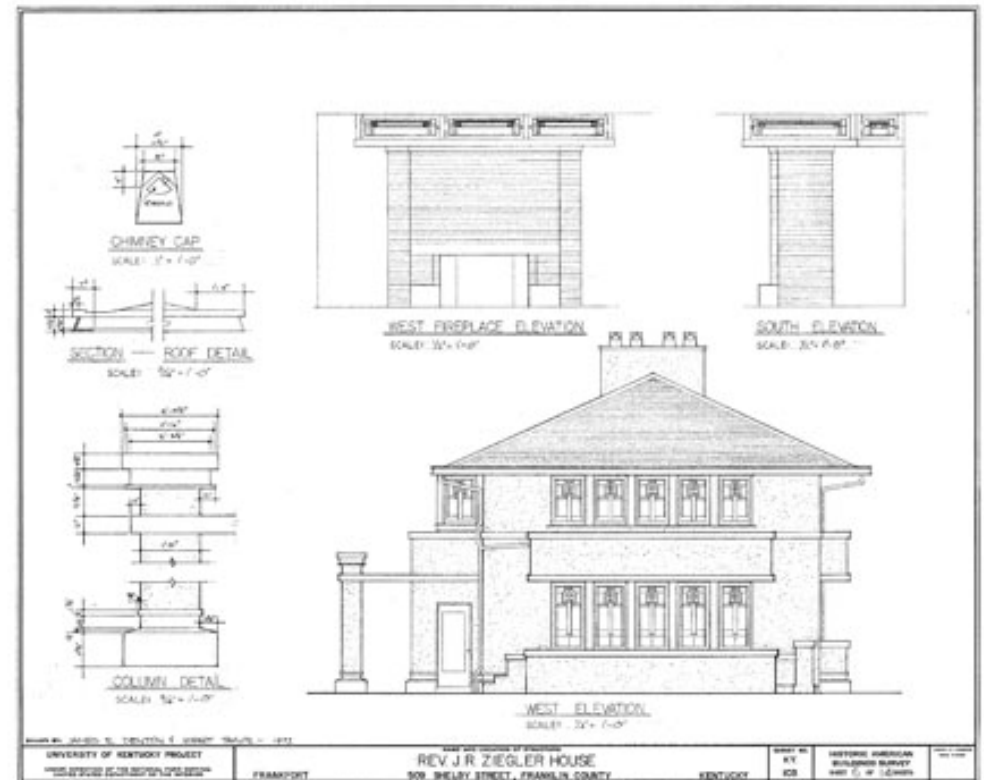
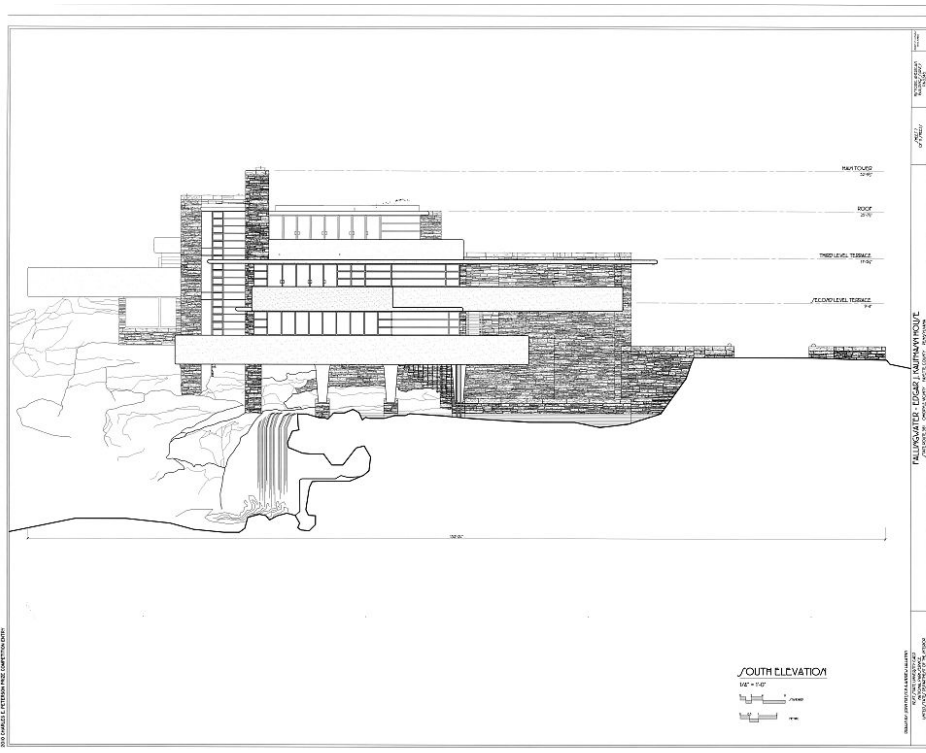
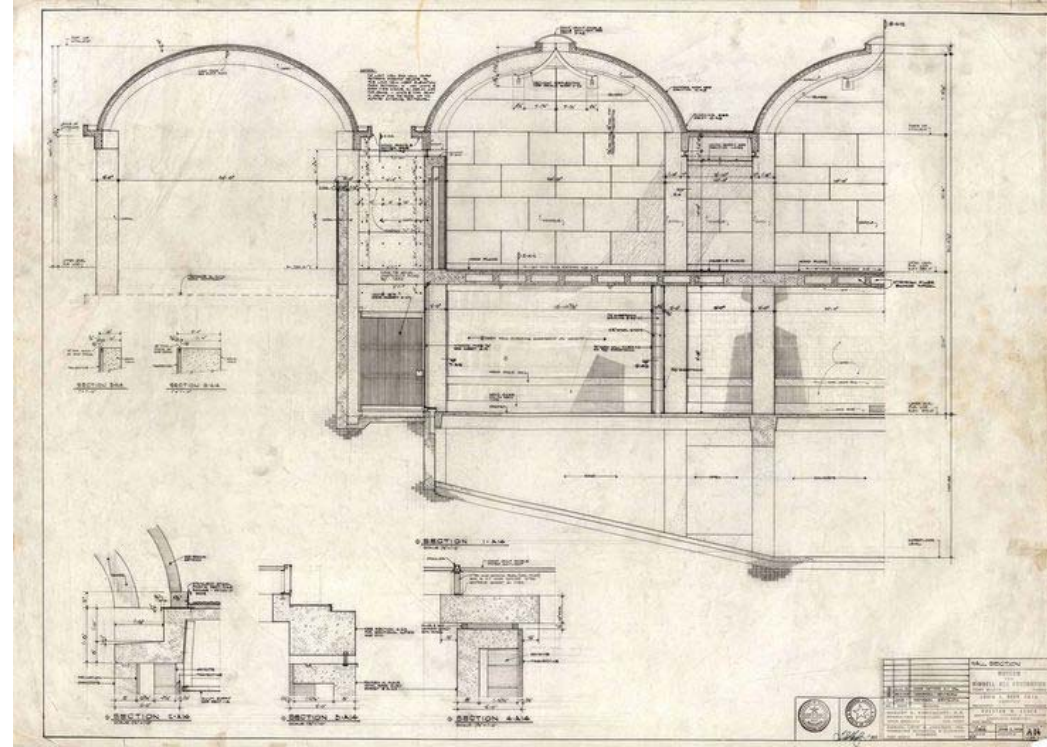
Standard conventions are essential for clear, unambiguous written, oral, and graphical communication. Drawings are used by a variety of trades to communicate their ideas: engineers, architects, contractors, vendors, fabricators...

Standards ensure that a drawing conveys the same meaning to all who read them.

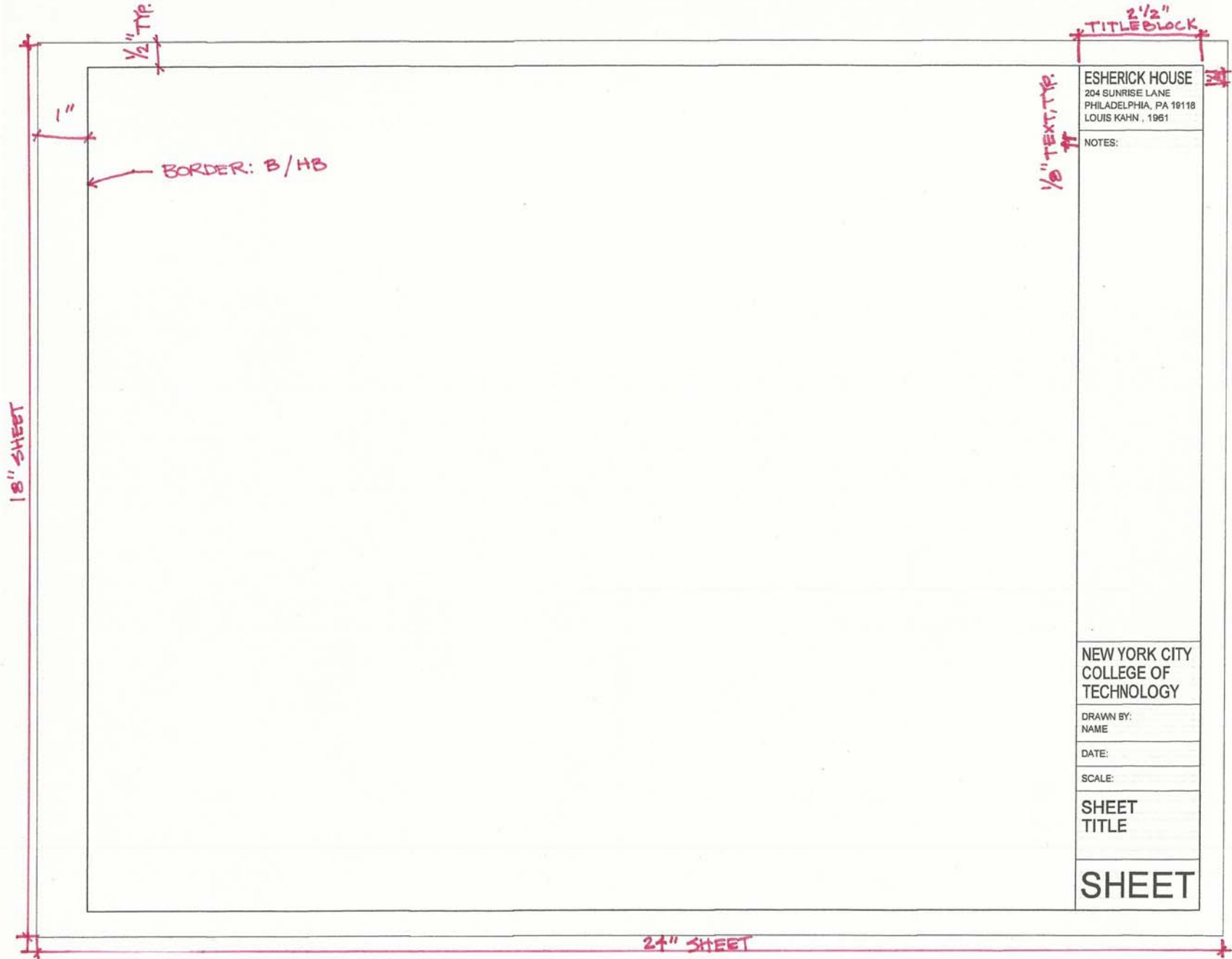
	ESHERICK HOUSE 204 SUNRISE LANE PHILADELPHIA, PA 19118 LOUIS KAHN, 1961
	NOTES:
NEW YORK CITY COLLEGE OF TECHNOLOGY	
DRAWN BY: YOUR NAME	
DATE:	
SCALE: AS NOTED	
CELLAR PLAN & DETAIL	
A-100	

TITLEBLOCK and SHEET FORMAT

DRAWING STANDARDS: TITLEBLOCK and SHEET FORMAT



SHEET FORMAT



TITLEBLOCK

PROJECT INFORMATION

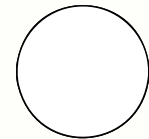
ESHERICK HOUSE
204 SUNRISE LANE
PHILADELPHIA, PA 19118
LOUIS KAHN, 1961

1 1/4"

NOTES:

NOTES, REVISION TRACKING, KEY

PROFESSIONAL SEAL



COMPANY INFORMATION

NEW YORK CITY
COLLEGE OF
TECHNOLOGY

AUTHOR - RESPONSIBLE FOR DRAFTING

DRAWN BY:
NAME

DATE:

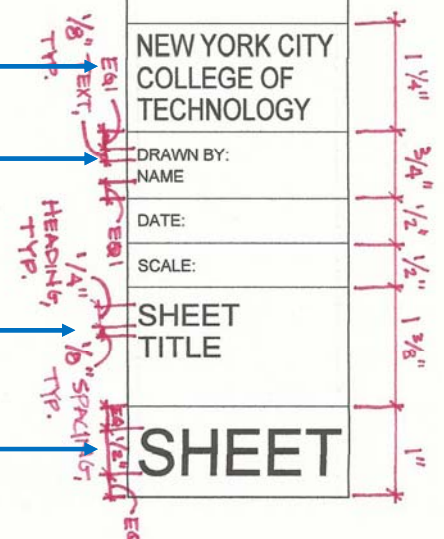
SCALE:

DRAWING NAME OR TYPE
(PLAN/ELEVATION/SECTION/DETAIL)

SHEET
TITLE

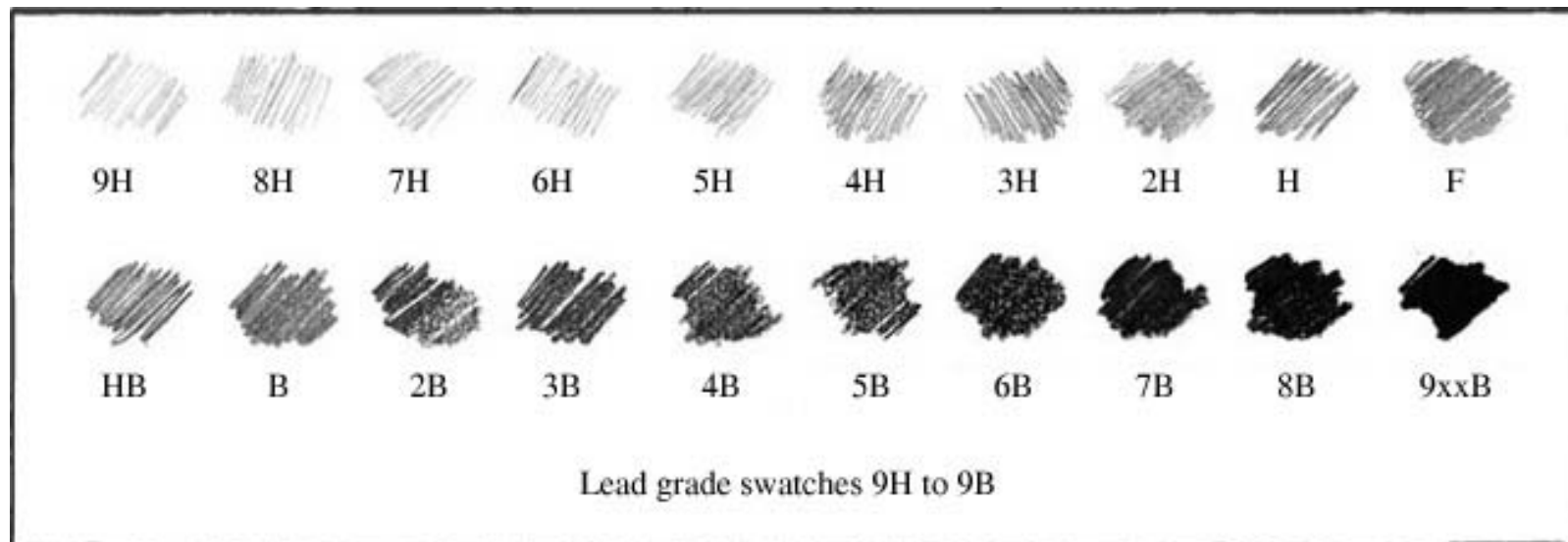
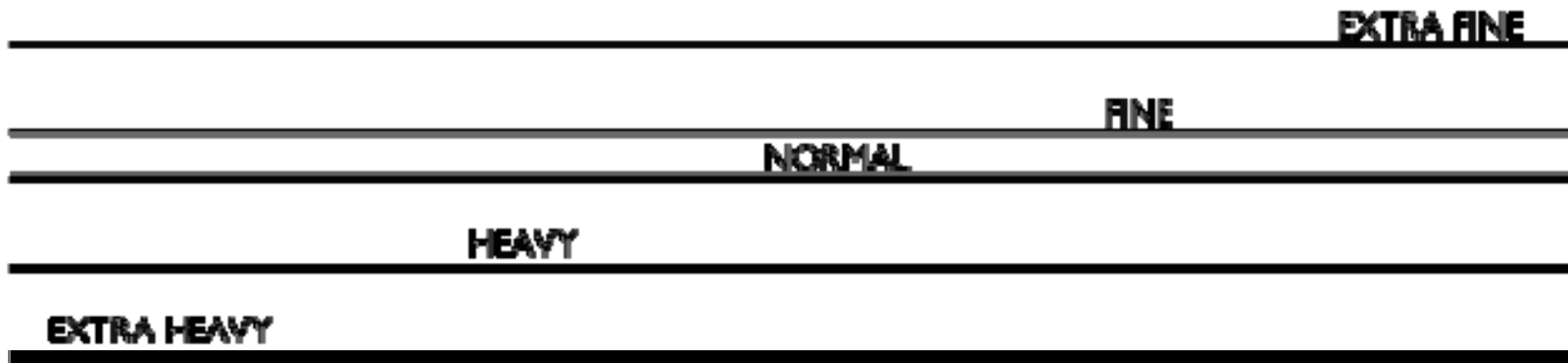
DRAWING NUMBER

SHEET



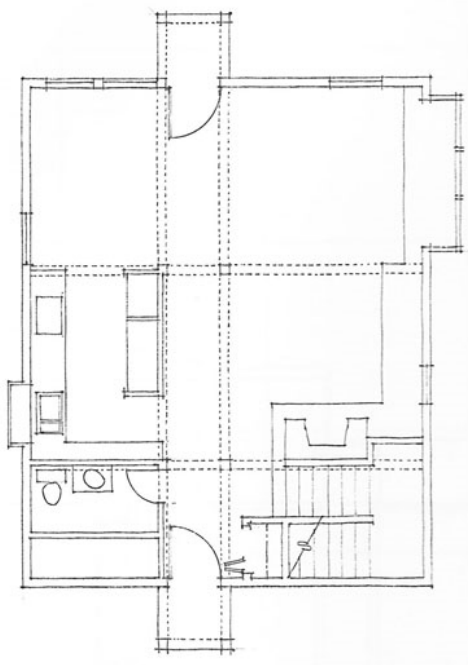
DRAWING STANDARDS: LINEWORK

LINEWEIGHT

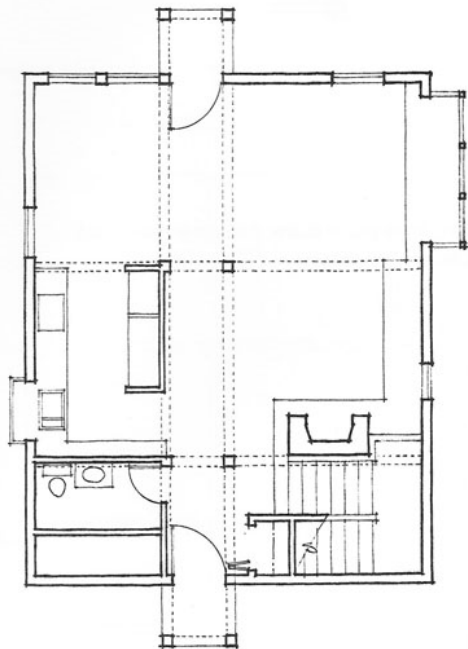


LINEWORK

LINEWEIGHT



Single lineweight



Correct lineweights

In theory, all lines should be uniformly dense for ease of readability and reproduction. Line weight is therefore primarily a matter of width or thickness. While inked lines are uniformly black and vary only in width, pencil lines can vary in both width and tonal value, depending on the hardness of the lead used, the tooth and density of the surface, and the speed and pressure with which you draw. Strive to make all pencil lines uniformly dense and vary their width to achieve differing line weights.

Heavy

- Heavy solid lines are used to delineate the profiles of plan and section cuts (see pages 54 and 71) as well as spatial edges (see page 99).
- Use H, F, HB, or B leads; pressing too hard to draw a bold line indicates that you are using too hard of a lead.
- Use a lead holder or draw a series of closely spaced lines with a 0.3 mm or 0.5 mm mechanical pencil; avoid using a 0.7 mm or 0.9 mm pencil for drawing heavy line weights.

Medium

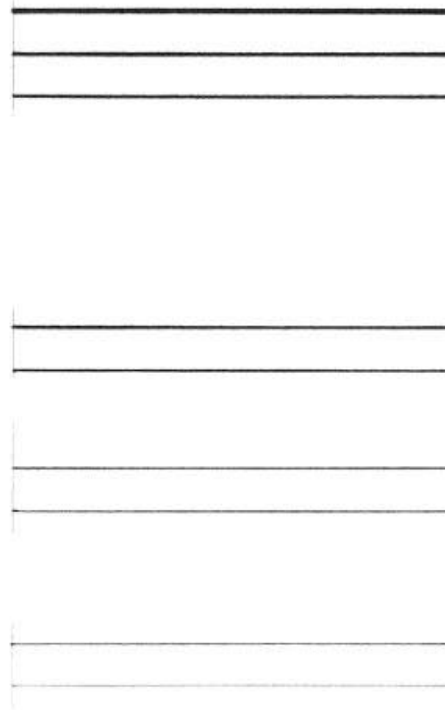
- Medium-weight solid lines indicate the edges and intersections of planes.
- Use H, F, or HB leads.

Light

- Lightweight solid lines suggest a change in material, color, or texture, without a change in the form of an object.
- Use 2H, H, or F leads.

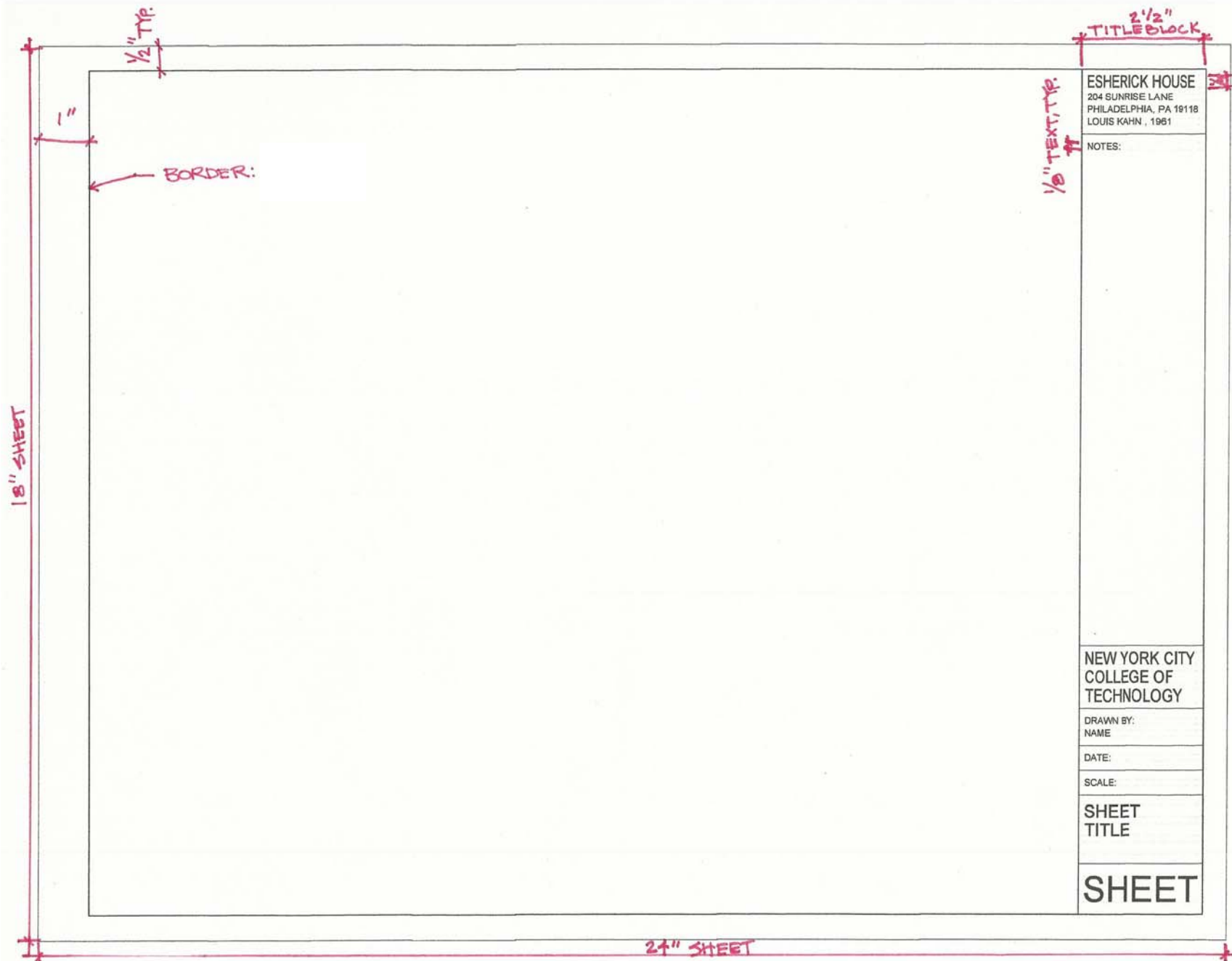
Very Light

- Very light solid lines are used to lay out drawings, establish organizing grids, and indicate surface textures.
- Use 4H, 2H, H, or F leads.



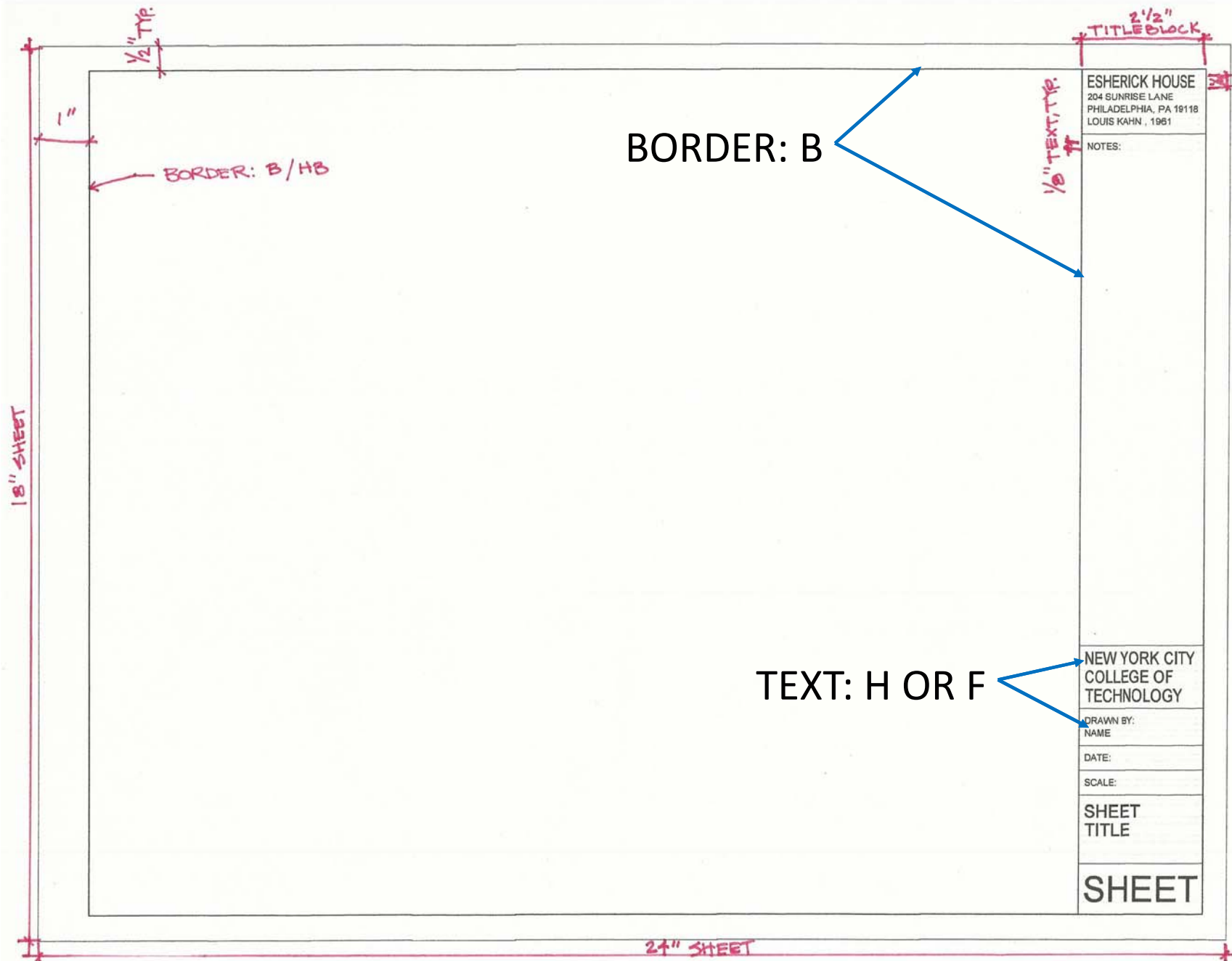
LINEWEIGHT

WHICH WOULD YOU USE?



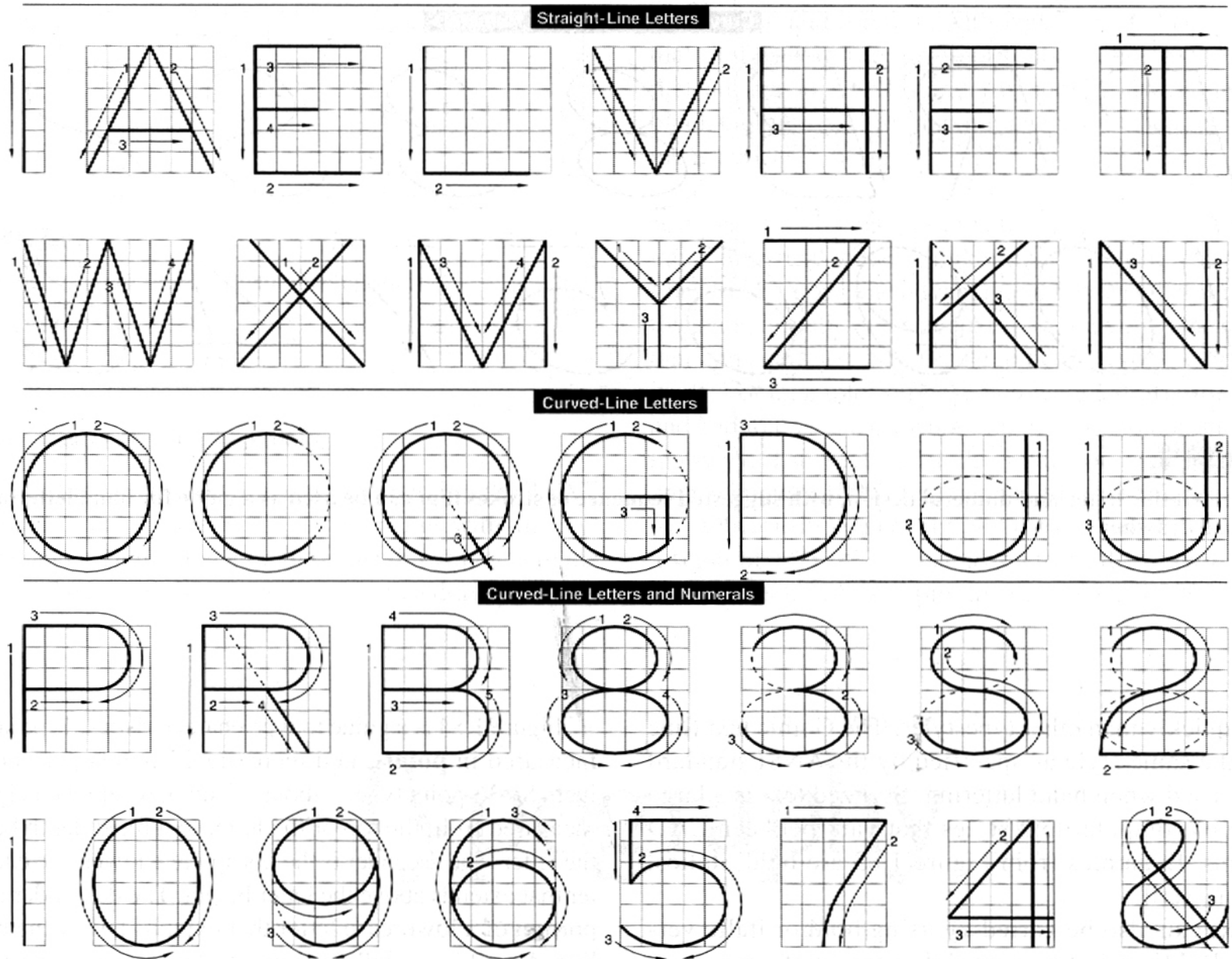
LINEWEIGHT

WHICH LEAD WOULD YOU USE?

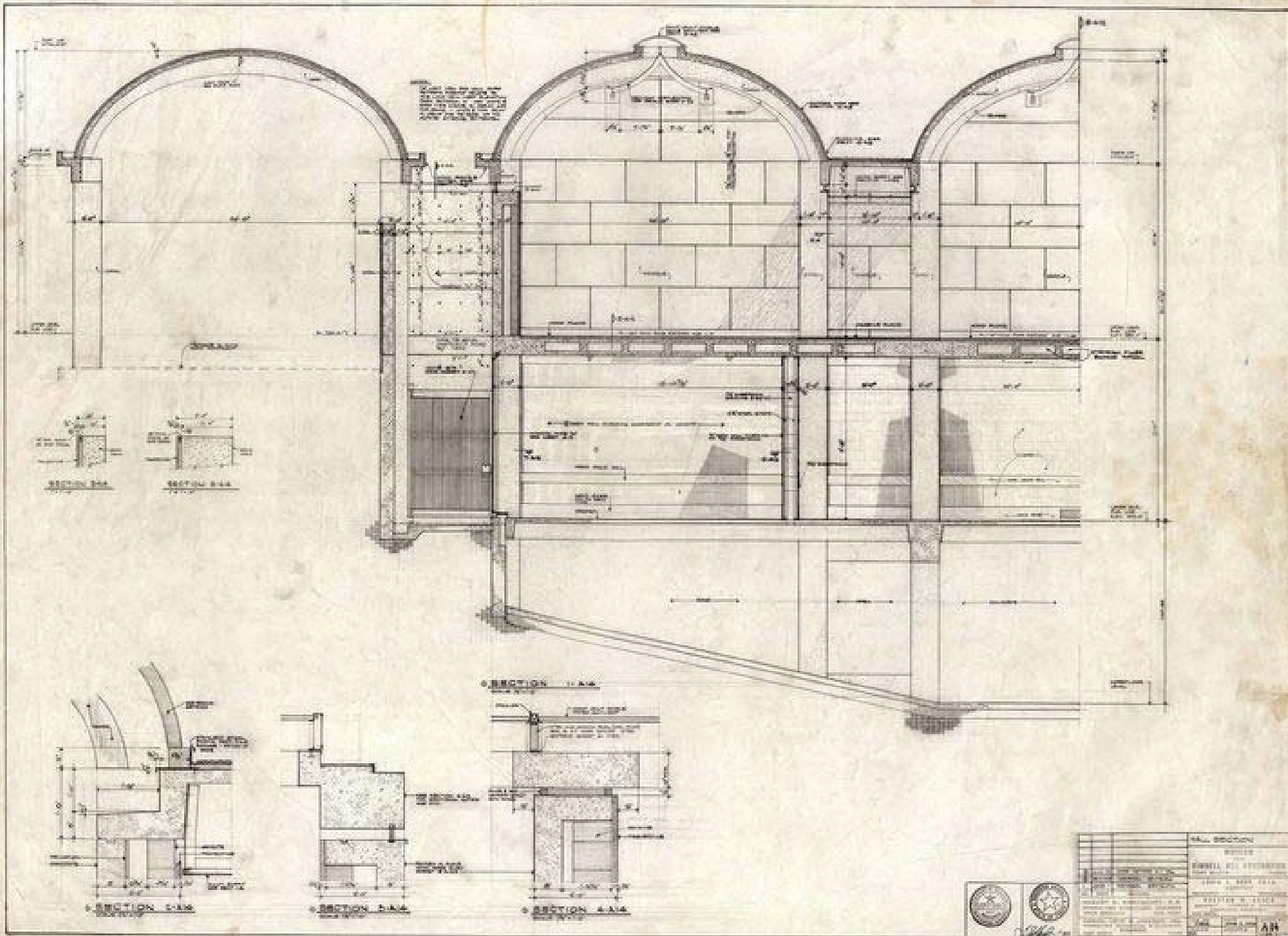


DRAWING STANDARDS: LETTERING

USE ONLY CAPITAL LETTERS, SINGLE STROKE GOTHIC TYPE

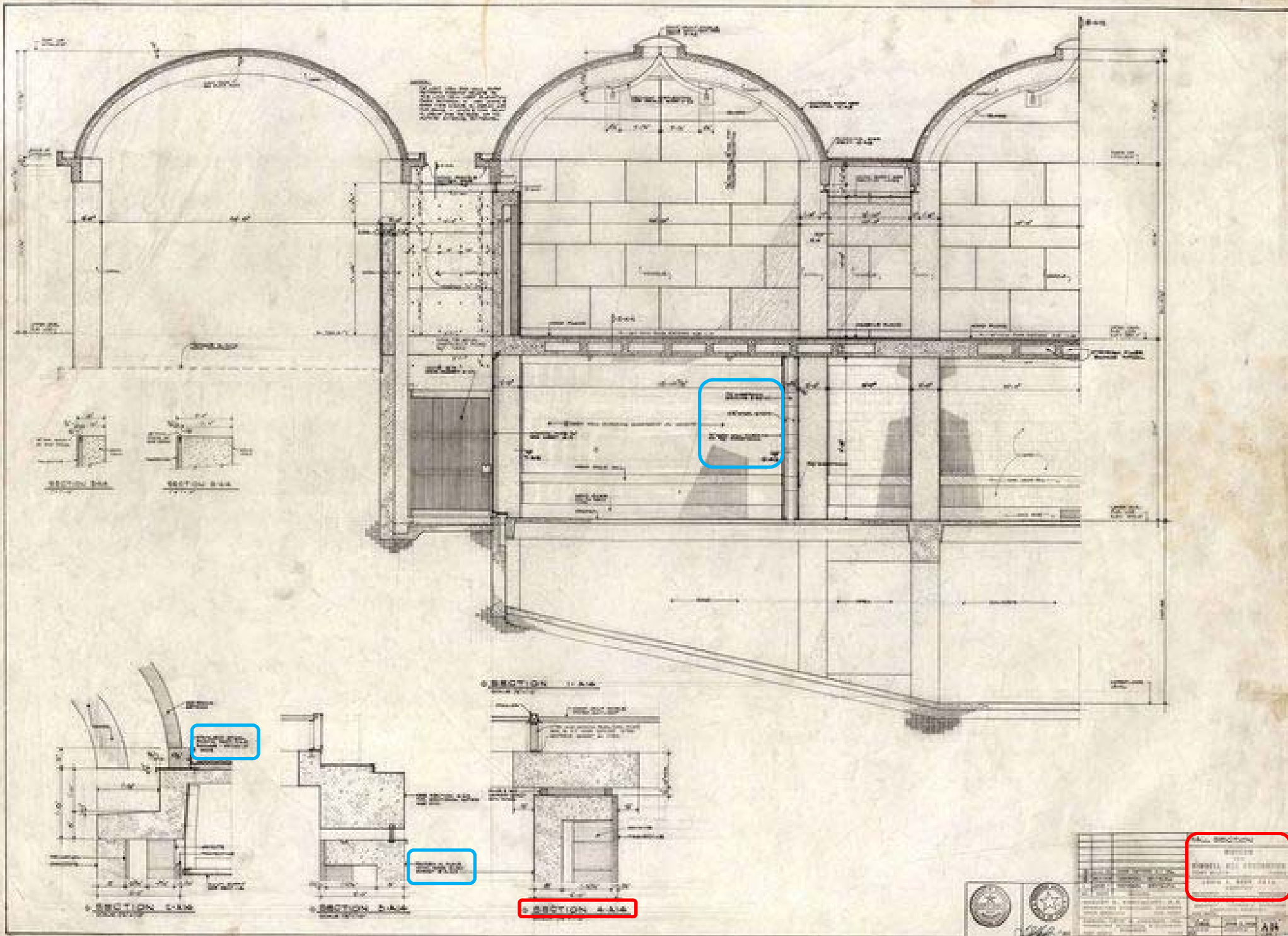


HOW MANY VARIATIONS OF TEXT HEIGHT DO YOU SEE?

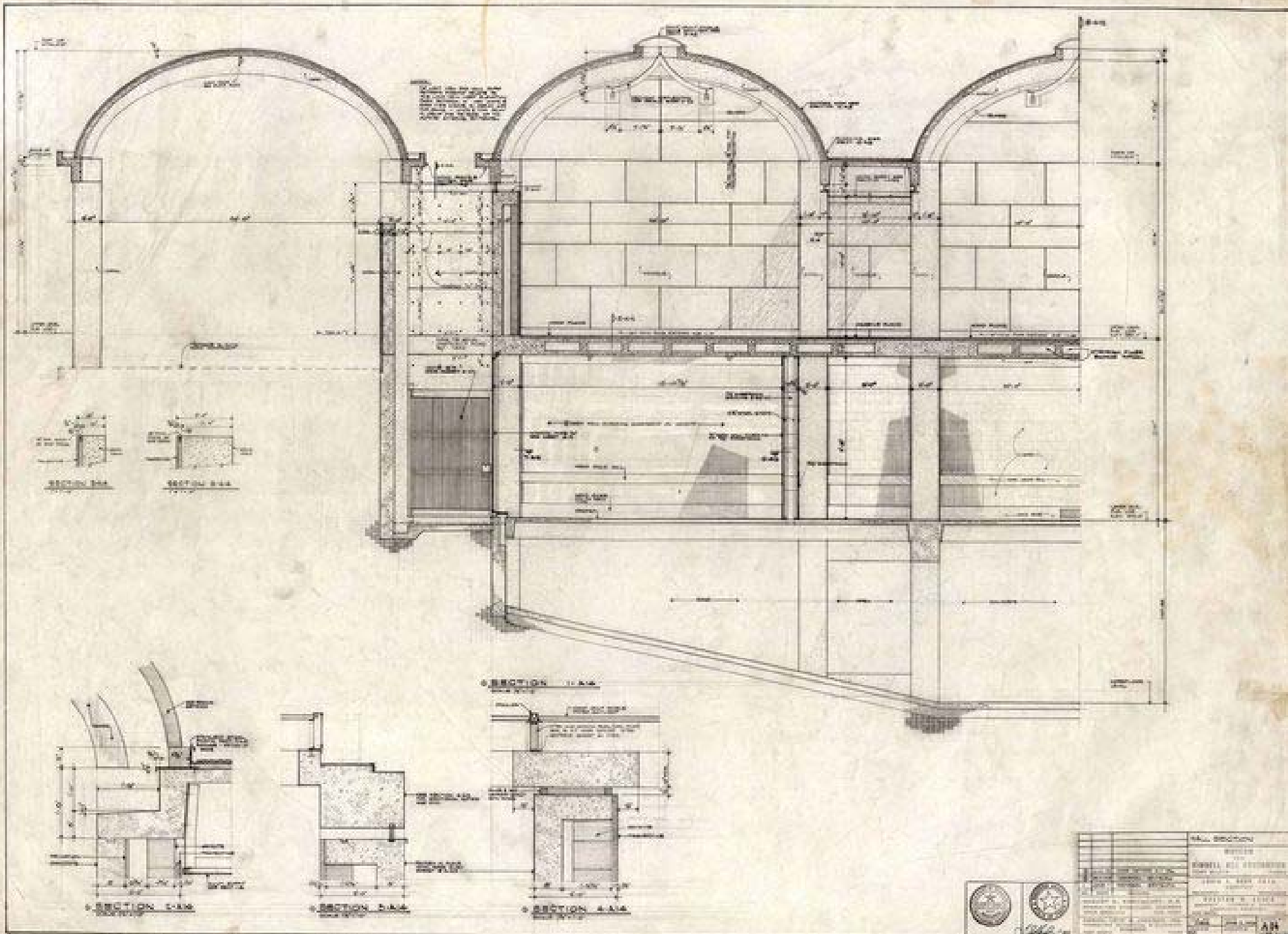


		HALL SECTION SCALE: AS SHOWN DATE: 1910 BY: [Signature]
---	---	---

HOW MANY VARIATIONS OF TEXT HEIGHT DO YOU SEE?

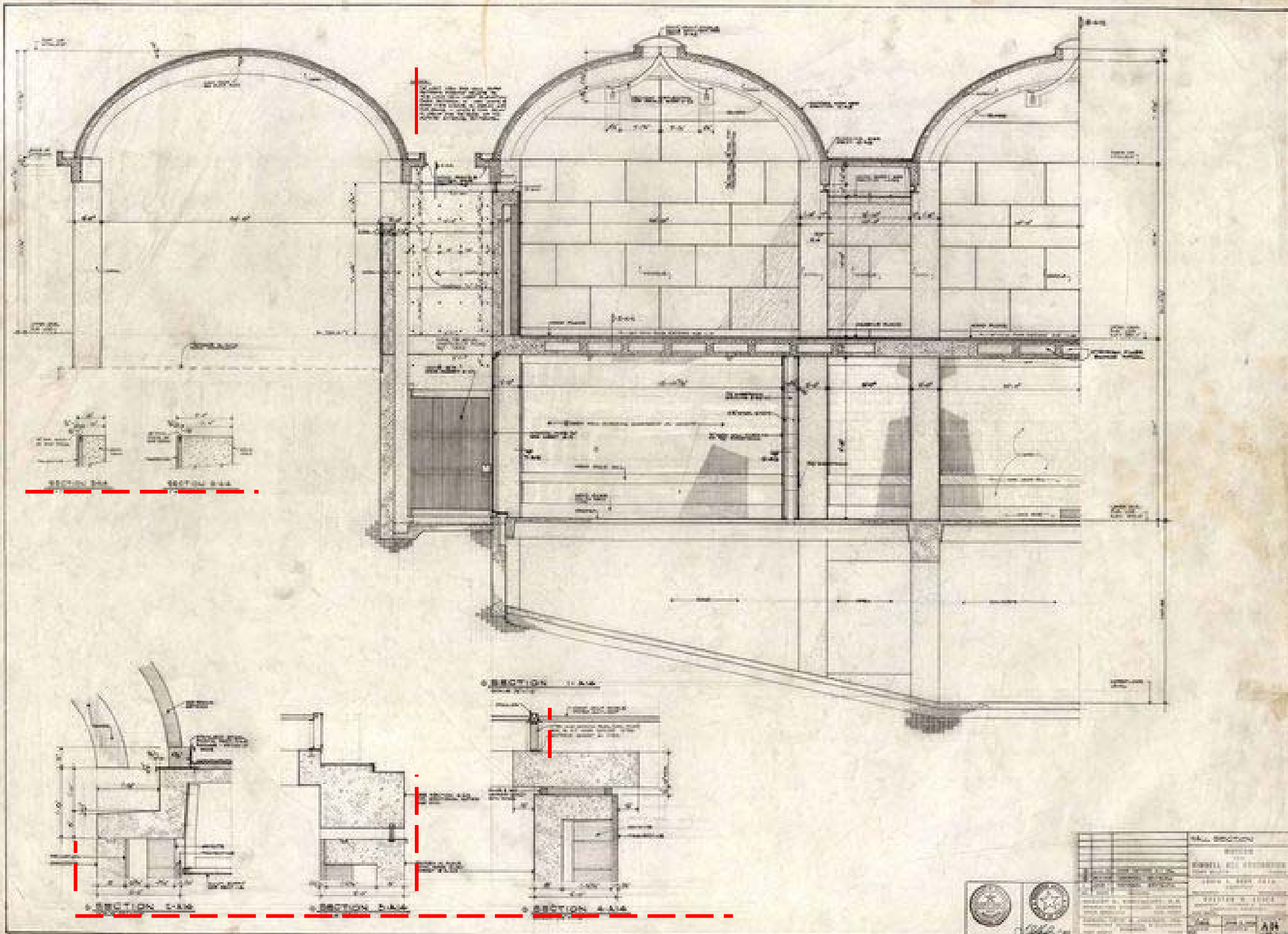


WHERE IS THE TEXT LOCATED? HOW IS IT POSITIONED?



SCHOOL SECTION	
NO. 1	SECTION 1-1
NO. 2	SECTION 2-2
NO. 3	SECTION 3-3
NO. 4	SECTION 4-4
NO. 5	SECTION 5-5
NO. 6	SECTION 6-6
NO. 7	SECTION 7-7
NO. 8	SECTION 8-8
NO. 9	SECTION 9-9
NO. 10	SECTION 10-10
NO. 11	SECTION 11-11
NO. 12	SECTION 12-12
NO. 13	SECTION 13-13
NO. 14	SECTION 14-14
NO. 15	SECTION 15-15
NO. 16	SECTION 16-16
NO. 17	SECTION 17-17
NO. 18	SECTION 18-18
NO. 19	SECTION 19-19
NO. 20	SECTION 20-20
NO. 21	SECTION 21-21
NO. 22	SECTION 22-22
NO. 23	SECTION 23-23
NO. 24	SECTION 24-24
NO. 25	SECTION 25-25
NO. 26	SECTION 26-26
NO. 27	SECTION 27-27
NO. 28	SECTION 28-28
NO. 29	SECTION 29-29
NO. 30	SECTION 30-30
NO. 31	SECTION 31-31
NO. 32	SECTION 32-32
NO. 33	SECTION 33-33
NO. 34	SECTION 34-34
NO. 35	SECTION 35-35
NO. 36	SECTION 36-36
NO. 37	SECTION 37-37
NO. 38	SECTION 38-38
NO. 39	SECTION 39-39
NO. 40	SECTION 40-40
NO. 41	SECTION 41-41
NO. 42	SECTION 42-42
NO. 43	SECTION 43-43
NO. 44	SECTION 44-44
NO. 45	SECTION 45-45
NO. 46	SECTION 46-46
NO. 47	SECTION 47-47
NO. 48	SECTION 48-48
NO. 49	SECTION 49-49
NO. 50	SECTION 50-50
NO. 51	SECTION 51-51
NO. 52	SECTION 52-52
NO. 53	SECTION 53-53
NO. 54	SECTION 54-54
NO. 55	SECTION 55-55
NO. 56	SECTION 56-56
NO. 57	SECTION 57-57
NO. 58	SECTION 58-58
NO. 59	SECTION 59-59
NO. 60	SECTION 60-60
NO. 61	SECTION 61-61
NO. 62	SECTION 62-62
NO. 63	SECTION 63-63
NO. 64	SECTION 64-64
NO. 65	SECTION 65-65
NO. 66	SECTION 66-66
NO. 67	SECTION 67-67
NO. 68	SECTION 68-68
NO. 69	SECTION 69-69
NO. 70	SECTION 70-70
NO. 71	SECTION 71-71
NO. 72	SECTION 72-72
NO. 73	SECTION 73-73
NO. 74	SECTION 74-74
NO. 75	SECTION 75-75
NO. 76	SECTION 76-76
NO. 77	SECTION 77-77
NO. 78	SECTION 78-78
NO. 79	SECTION 79-79
NO. 80	SECTION 80-80
NO. 81	SECTION 81-81
NO. 82	SECTION 82-82
NO. 83	SECTION 83-83
NO. 84	SECTION 84-84
NO. 85	SECTION 85-85
NO. 86	SECTION 86-86
NO. 87	SECTION 87-87
NO. 88	SECTION 88-88
NO. 89	SECTION 89-89
NO. 90	SECTION 90-90
NO. 91	SECTION 91-91
NO. 92	SECTION 92-92
NO. 93	SECTION 93-93
NO. 94	SECTION 94-94
NO. 95	SECTION 95-95
NO. 96	SECTION 96-96
NO. 97	SECTION 97-97
NO. 98	SECTION 98-98
NO. 99	SECTION 99-99
NO. 100	SECTION 100-100

WHERE IS THE TEXT LOCATED? HOW IS IT POSITIONED?



LETTERING ERRORS TO AVOID:

ESTIMATE

GOOD EXAMPLE!

ESTIMaTE

Letters not uniform in style.

ESTIMATE
ESTIMATE

Letters not uniform in height.

ESTIMATE
ESTIMATE

Letters not uniformly vertical or inclined.

ESTIMATE
ESTIMATE

Letters not uniform in thickness of stroke.

ESTIMATE

Areas between letters not uniform.