

ALL DISTORTIONS ARE INTENTIONAL

NECK DEEP US TOUR

NEW ALBUM OUT JULY 24
ALL
DISTORTIONS ARE
INTENTIONAL



ADA1
US TOUR



NOV 06 NASHVILLE, TN MARATHON MUSIC WORKS	NOV 25 CHICAGO, IL RADIUS
NOV 07 ATLANTA, GA TABERNACLE	NOV 27 DETROIT, MI ROYAL OAK
NOV 08 ORLANDO, FL HARD ROCK LIVE	NOV 28 CLEVELAND, OH THE AGORA
NOV 10 DALLAS, TX BOMB FACTORY	NOV 29 PITTSBURGH, PA STAGE AE
NOV 11 AUSTIN, TX EMOS	DEC 01 CHARLOTTE, NC THE FILLMORE
NOV 13 PHOENIX, AZ THE MARQUEE	DEC 02 NORFOLK, VA THE NORVA
NOV 14 LOS ANGELES, CA THE NOVO	DEC 04 BALTIMORE, MD RAM'S HEAD LIVE
NOV 15 SAN FRANCISCO, CA THE WARFIELD	DEC 05 PHILADELPHIA, PA THE FRANKLIN MUSIC HALL
NOV 17 PORTLAND, OR CRYSTAL BALLROOM	DEC 06 SAYREVILLE, NJ STARLAND BALLROOM
NOV 18 SEATTLE, WA SHOWBOX SICO	DEC 08 TORONTO, ON THE DANFORTH MUSIC HALL
NOV 20 SALT LAKE CITY, UT THE COMPLEX	DEC 09 TORONTO, ON THE DANFORTH MUSIC HALL
NOV 21 DENVER, CO OGDEN THEATRE	DEC 11 WORCESTER, MA THE PALLADIUM
NOV 23 KANSAS CITY, MO THE TRUMAN	DEC 12 NEW YORK, NY TERMINAL 5
NOV 24 MINNEAPOLIS, MN SKYWAY THEATRE	

ND

(004) NECKDEEPUK.COM

• SIGN UP FOR PRIORITY: TICKETS.NECKDEEPUK.COM

ALL DISTORTIONS ARE INTENTIONAL TOUR 2021

Lighting Design by Ashly Montesinos

Culmination Project Spring 2021

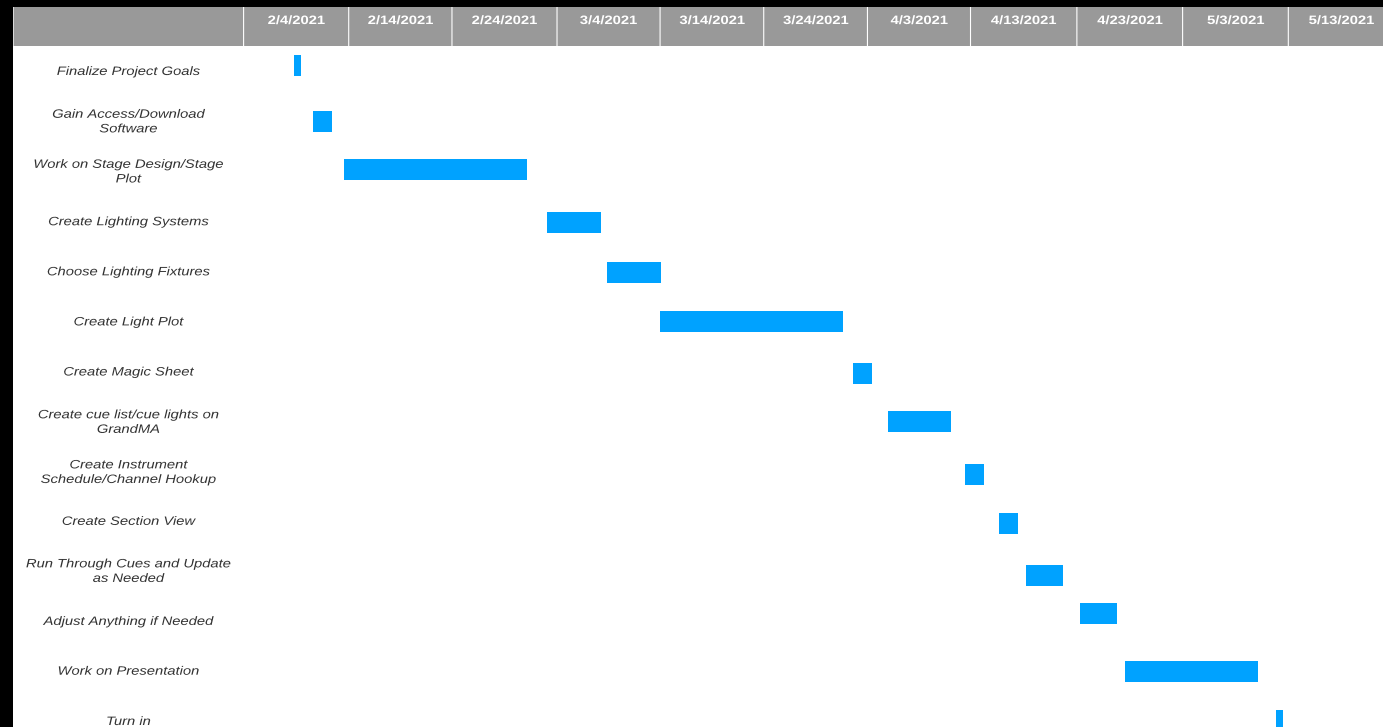
PURPOSE

- EXERCISE NEW SKILLS AS LIGHTING DESIGNER
 - INCLUDES LIGHTING PACKAGE THAT WOULD HAVE TO BE PRESENTED IF THIS WAS TO TAKE PLACE.
- FIRST STEP AS LIGHTING DESIGNER
 - CAN FAMILIARIZE MYSELF WITH THE PAPERWORK AND WHEN I COME ACROSS THESE IN THE FUTURE, THEY WON'T BE NEW TO ME
- GRADUATION

SCHEDULE

Task	Start Date	End Date	Duration
Finalize Project Goal	2/4/2021	2/5/2021	1
Gain access/Download software	2/6/2021	2/9/2021	3
Work on Stage Design/Stage Plot	2/10/2021	2/25/2021	15
Create Lighting Systems	2/26/2021	3/3/2021	5
Choose Lighting Fixtures	3/4/2021	3/9/2021	5
Create Light Plot	3/10/2021	3/25/2021	15
Create magic sheet	3/26/2021	3/29/2021	3
Cue lights on GrandMA	3/30/2021	4/6/2021	7
Instrument Schedule/Channel hookup	4/7/2021	4/10/2021	3
Create Section View	4/11/2021	4/13/2021	2
Run through cues & update as needed	4/14/2021	4/19/2021	5
Adjust anything if needed	4/20/2021	4/25/2021	5
Work on presentation	4/26/2021	5/7/2021	11
Turn in	5/8/2021	5/9/2021	1

I followed a very strict schedule and made sure I was always on task. Everything that I did built on the previous task, so I had to stay on track. My lighting design class that I'm taking this semester was also very helpful for my project, so I lined my schedule up with that.



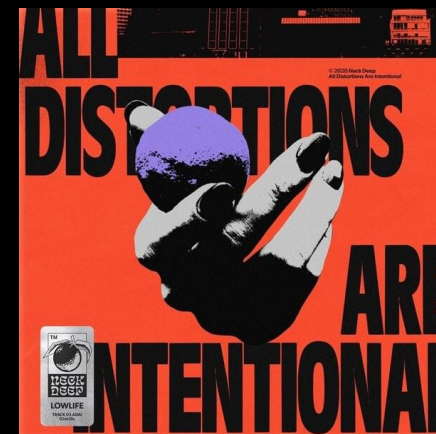
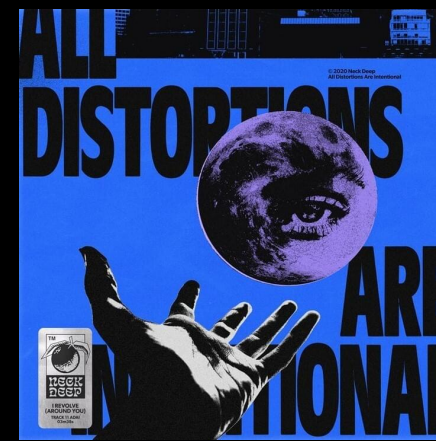
Budget

Item	Estimated Amount
Laptop	\$300
GrandMA Offline	\$0
Vectorworks Student Version	\$0
Lightwright	\$0
Estimated Total	\$300

NECK DEEP



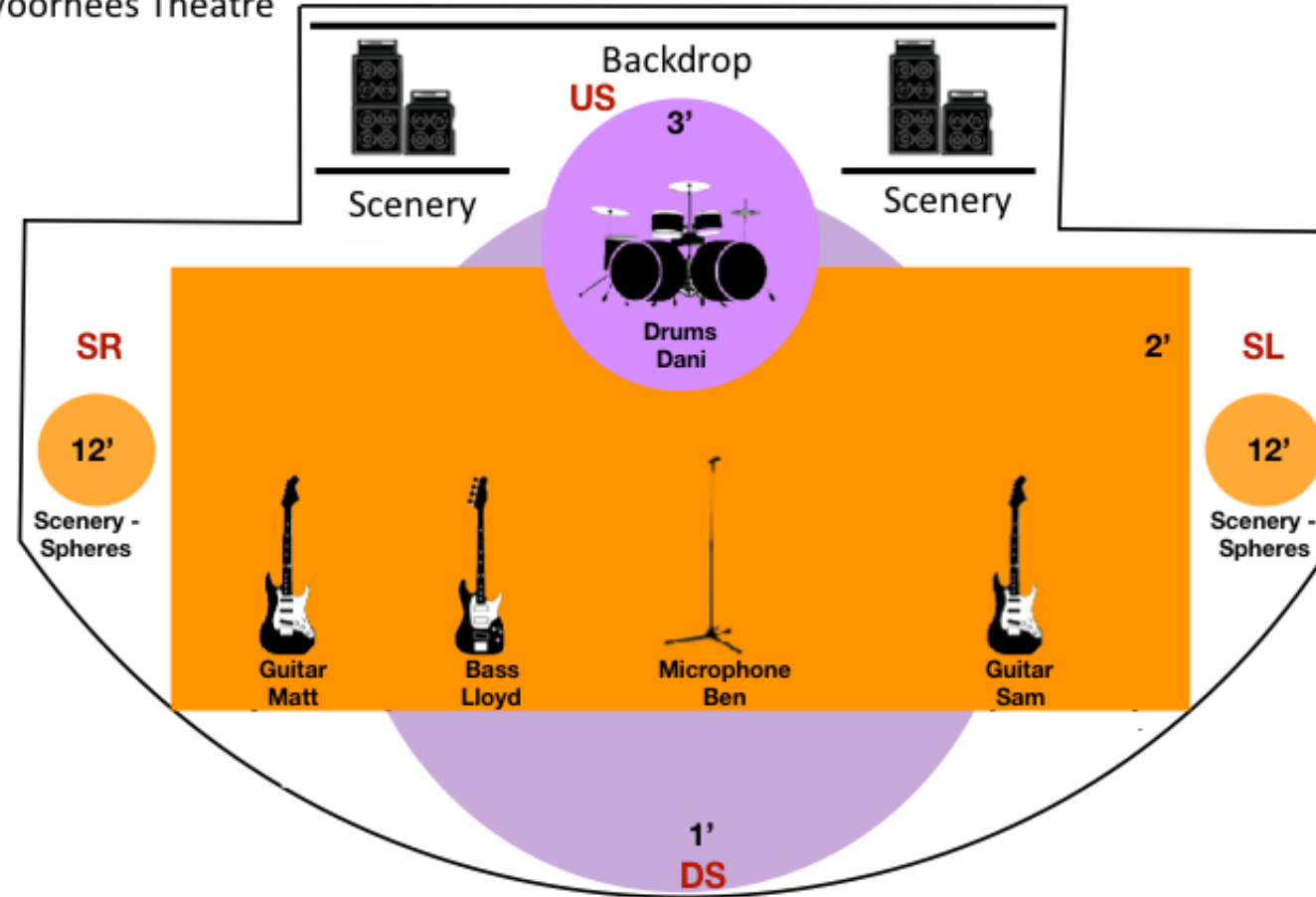
- MATT WEST - GUITARIST
- LLOYD ROBERTS - BASSIST
- BEN BARLOW - VOCALS
- SAM BOWDEN - GUITARIST
- DANI WASHINGTON - DRUMS



STAGE PLOT

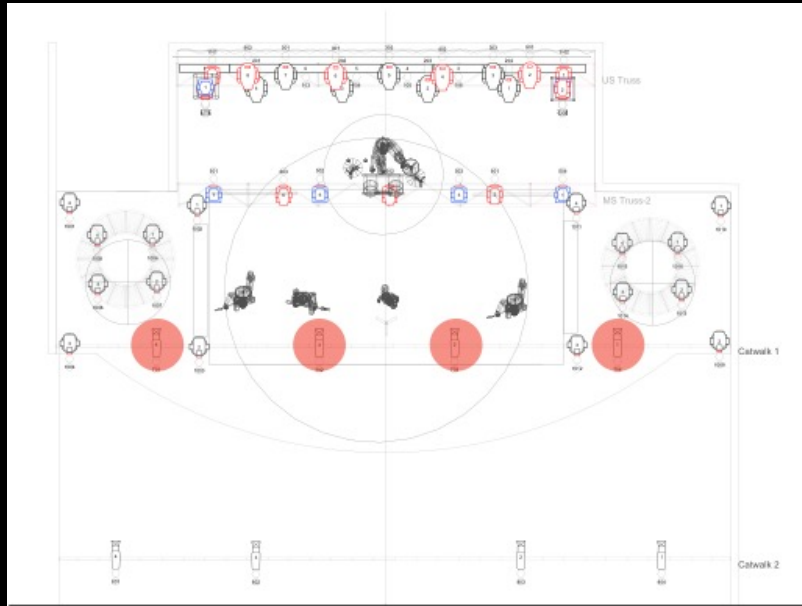
Neck Deep **All Distortions are Intentional Tour 2021**

Venue: Voorhees Theatre

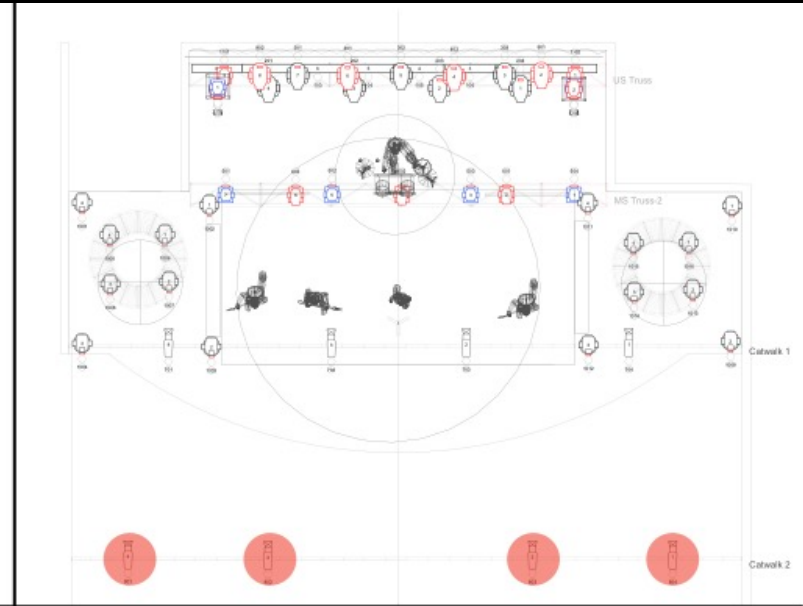


LIGHTING SYSTEMS

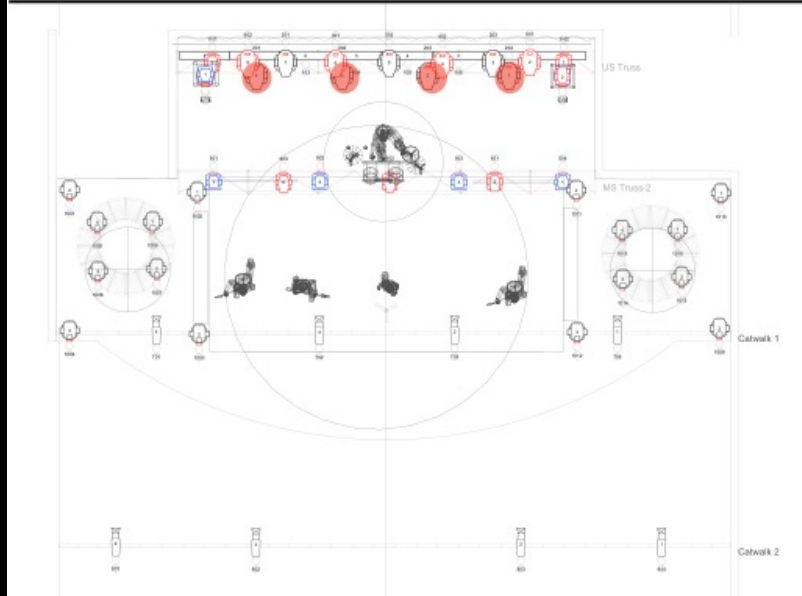
Source4 19deg



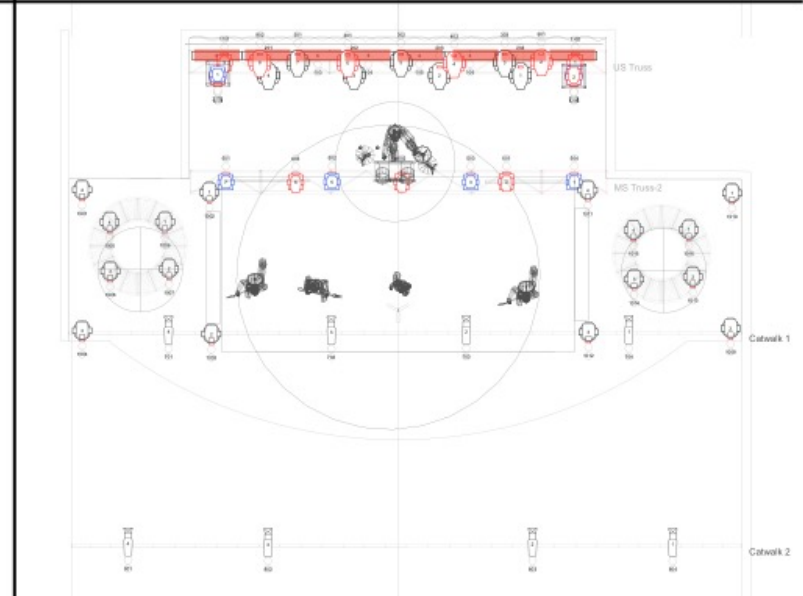
Source4 19deg



Mac Vipers



Vivid-R's



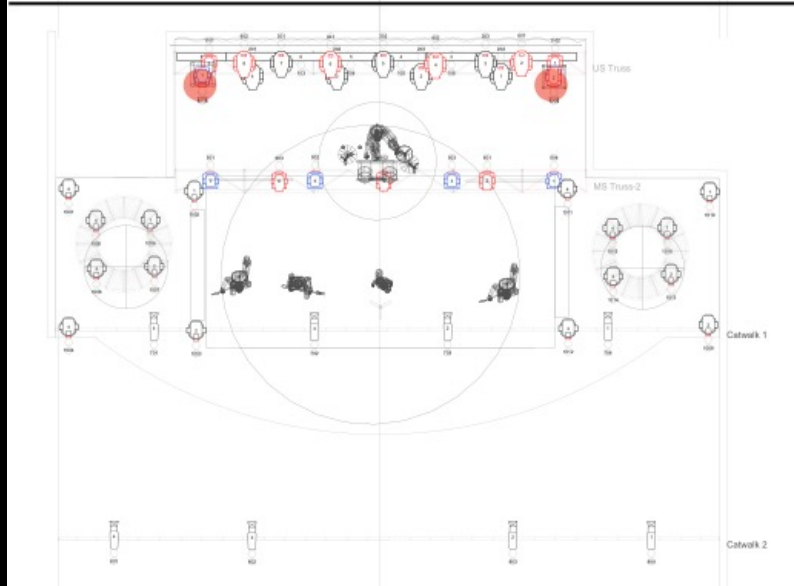
2 Clay Paky Sharpy Wash
4 Mac Viper Wash
3 Mac Viper Profiles



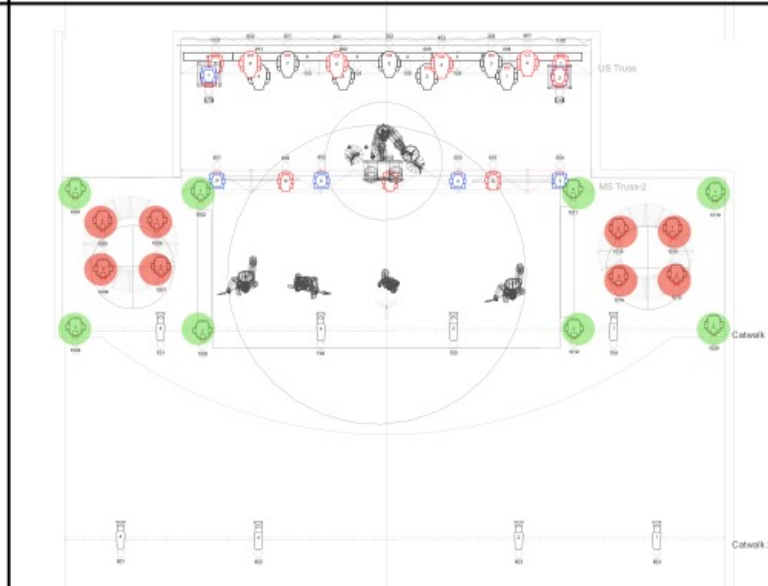
4 Clay Paky Sharpy
3 Clay Paky Sharp Wash



2 Clay Paky Sharpy
1 Clay Paky Sharp Wash



16 Mac Axiom Hybrids
(8 on each side)



LIGHTING FIXTURES: WHY I CHOSE THEM



Vivid-r 42

Have a good wash
and saturated colors



Source4 19 deg

Gives a clean
and bright beam



Clay Paky Sharpy

Very bright with a
laser like beam



Clay Paky Sharpy
Wash

High speed and
good wash



Martin MAC
Axiom Hybrid

Clean and bright
Gobo projection



Martin MAC Viper Wash

Bright, full range wash
with saturated colors



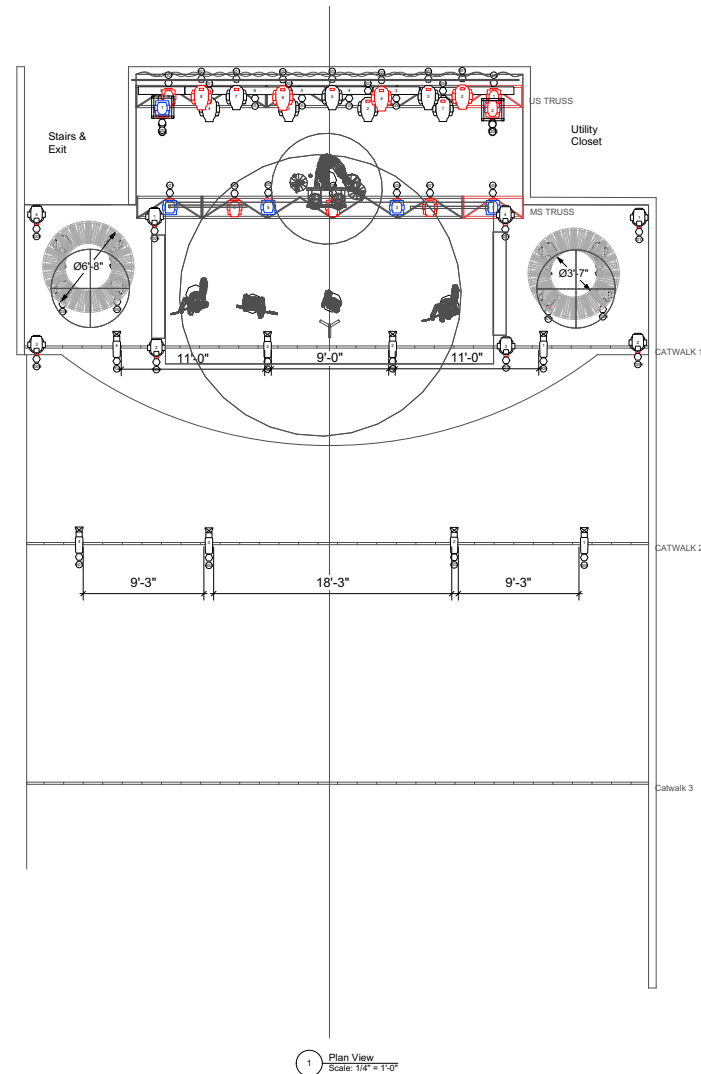
Martin MAC Viper Profile

Vibrant colors, smooth
Fades and quick blackouts

LIGHTING PLOT

- Upstage Truss
- Upstage SL & SR Truss Towers
- Midstage Truss
- Catwalk 1
- Catwalk 2
- US Ground
- Cyc
- SR & SL Ground
- SR & SL Circular Truss

VECTORWORKS EDUCATIONAL VERSION



Light	ETC Vivid-r 42 @ 500w	
	ETC Source4 LED 19deg @ 140w	
Moving Light		
	Clay Paky Sharpy @ 180w	
	Clay Paky Sharpy Wash 330 @ 400w	
	Martin MAC Axion Hybrid @ 600w	
	Martin MAC Viper Profile @ 1.225kw	
	Martin MAC Viper Wash @ 1.225kw	
Typical		
Color Summary		
Color	Size	Count

2 Key and Legend Scale: 1/4" = 1'-0"

1 Plan View Scale: 1/4" = 1'-0"

VECTORWORKS EDUCATIONAL VERSION

Designer/Contact Information:
Ashly Montasinos
New York, New York
(347)-4xx-8xxx

Drawn By: Ashly Montasinos
Revision Date:



NOTES:

Project: All Distortions are Intentional Tour 2021

Venue: Voorhees Theatre 186 Jay Street Brooklyn, NY 11201
Purpose: Plan View

Date: 5/5/21

Scale: 1:48

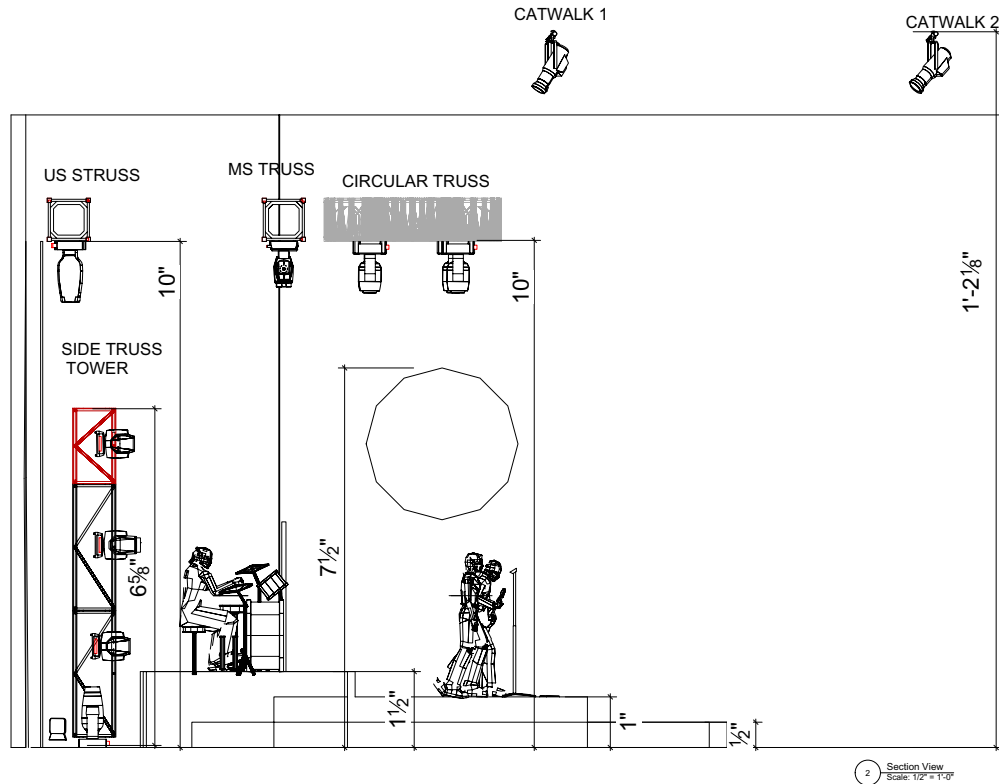
Sheet: 1 OF 2

SECTION VIEW

Trim heights are visible

Different levels of the platforms

VECTORWORKS EDUCATIONAL VERSION



2 Section View
Scale: 1/2" = 1'-0"

VECTORWORKS EDUCATIONAL VERSION

<p>Designer/Contact Information: Ashly Montesinos New York, New York (347)-xxx-xxxx</p>	
<p>Drawn By: Ashly Montesinos Revision Date:</p>	
<p>NOTES:</p>	
<p>Project: All Distortions are Intentional Tour 2021</p>	
<p>Remax/Contact: Theatre, 188 Bay Street, Brooklyn NY 11201</p>	
<p>Purpose: Section View</p>	
Date:	5/10/21
Scale:	1:24
Sheet:	2 OF 2

INSTRUMENT SCHEDULE/CHANNEL HOOKUP

All the fixtures that I used organized by their positions

12 different positions

Instrument Schedule

Page 1 of 5

5/14/21

All Distortions are Intentional Tour 2021

NeckDeepCulmination.lw6



Neck Deep
Voorhees Theatre

LD: Ashly Montesinos

US Truss

U#	Purpose	Instrument Type & Accessory	Load	Clr & Gbo	Chan	Ad	Dm
1	Backlight	Clay Paky Sharpy Wash 330	400w		(1102)		
2	Backlight	Martin MAC Viper Wash	1,225w		(901)		
3	Backlight	Martin MAC Viper Profile	1,225w		(303)		
4	Backlight	Martin MAC Viper Wash	1,225w		(402)		
5	Backlight	Martin MAC Viper Profile	1,225w		(302)		
6	Backlight	Martin MAC Viper Wash	1,225w		(401)		
7	Backlight	Martin MAC Viper Profile	1,225w		(301)		
8	Backlight	Martin MAC Viper Wash	1,225w		(902)		
9	Backlight	Clay Paky Sharpy Wash 330	400w		(1101)		

US Ground

U#	Purpose	Instrument Type & Accessory	Load	Clr & Gbo	Chan	Ad	Dm
1	Up Light	Martin MAC Viper Profile	1,225w		(204)		
2	Up Light	Martin MAC Viper Profile	1,225w		(203)		
3	Up Light	Martin MAC Viper Profile	1,225w		(202)		
4	Up Light	Martin MAC Viper Profile	1,225w		(201)		

DEMO VERSION / Lightwright 6

US Truss thru US Ground

Channel Hookup

Page 1 of 4

5/14/21

All Distortions are Intentional Tour 2021

NeckDeepCulmination.lw6



Neck Deep
Voorhees Theatre

LD: Ashly Montesinos

Channel	Position	U#	Inst Type & Access & Load	Purpose	Clr & Gb	Dm	Ad
(101)	CYC	8	ETC Vivid-r 42 500w	CYC light up			
(102)	CYC	7	ETC Vivid-r 42 500w	CYC light up			
(103)	CYC	6	ETC Vivid-r 42 500w	CYC light up			
(104)	CYC	5	ETC Vivid-r 42 500w	CYC light up			
(105)	CYC	4	ETC Vivid-r 42 500w	CYC light up			
(106)	CYC	3	ETC Vivid-r 42 500w	CYC light up			
(107)	CYC	2	ETC Vivid-r 42 500w	CYC light up			
(108)	CYC	1	ETC Vivid-r 42 500w	CYC light up			
(201)	US Ground	4	Martin MAC Viper Profile 1,225w	Up Light			
(202)	US Ground	3	Martin MAC Viper Profile 1,225w	Up Light			
(203)	US Ground	2	Martin MAC Viper Profile 1,225w	Up Light			
(204)	US Ground	1	Martin MAC Viper Profile 1,225w	Up Light			
(301)	US Truss	7	Martin MAC Viper Profile 1,225w	Backlight			
(302)	US Truss	5	Martin MAC Viper Profile 1,225w	Backlight			
(303)	US Truss	3	Martin MAC Viper Profile 1,225w	Backlight			
(401)	US Truss	6	Martin MAC Viper Wash 1,225w	Backlight			
(402)	US Truss	4	Martin MAC Viper Wash 1,225w	Backlight			
(501)	MS TRUSS	7	Clay Paky Sharpy 189w	Backlight			
(502)	MS TRUSS	5	Clay Paky Sharpy 189w	Backlight			
(503)	MS TRUSS	3	Clay Paky Sharpy 189w	Backlight			

DEMO VERSION / Lightwright 6

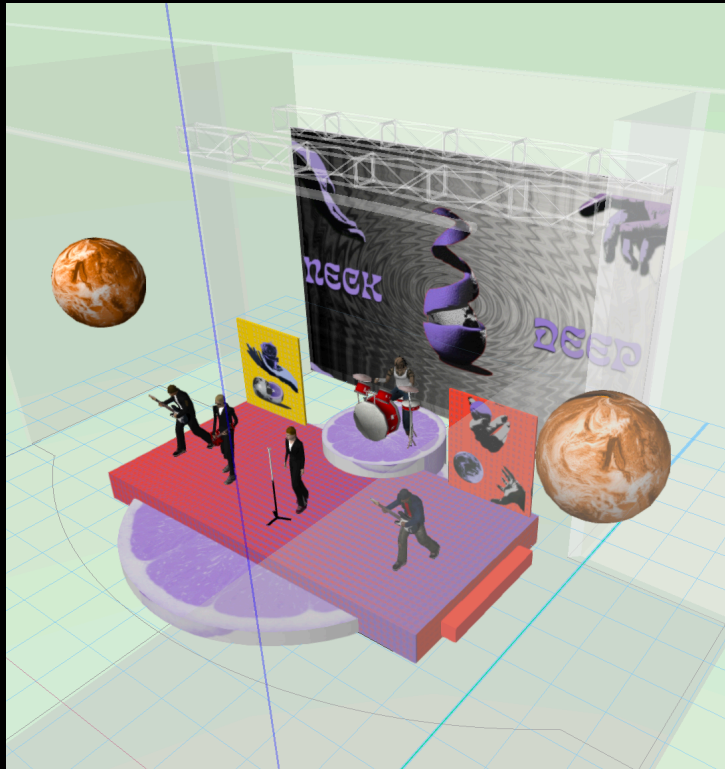
(101) thru (503)

Fixtures organized by their channels

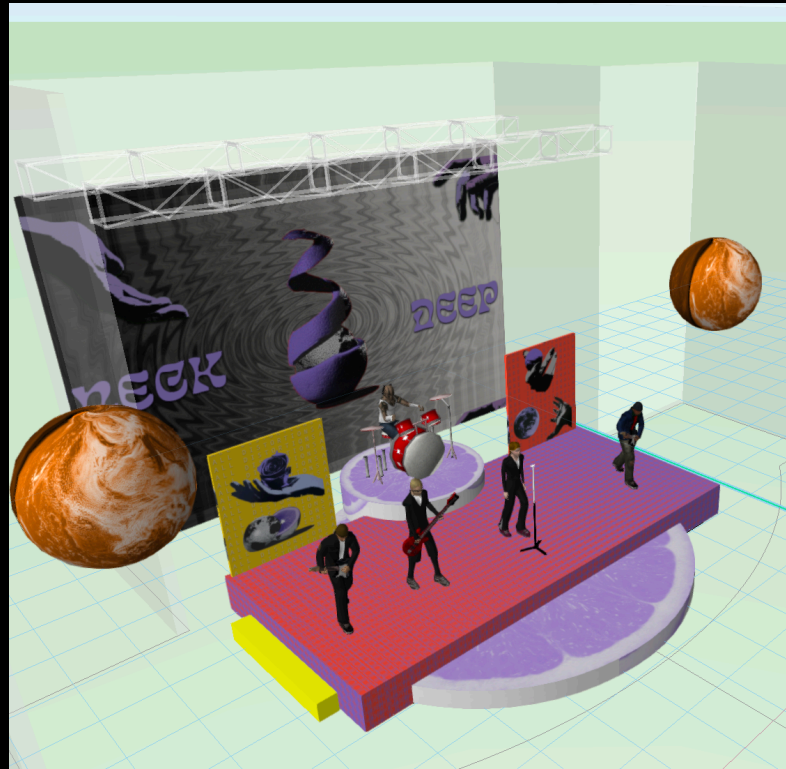
58 different channels

Chose each channel based on the type of fixture it is and their position

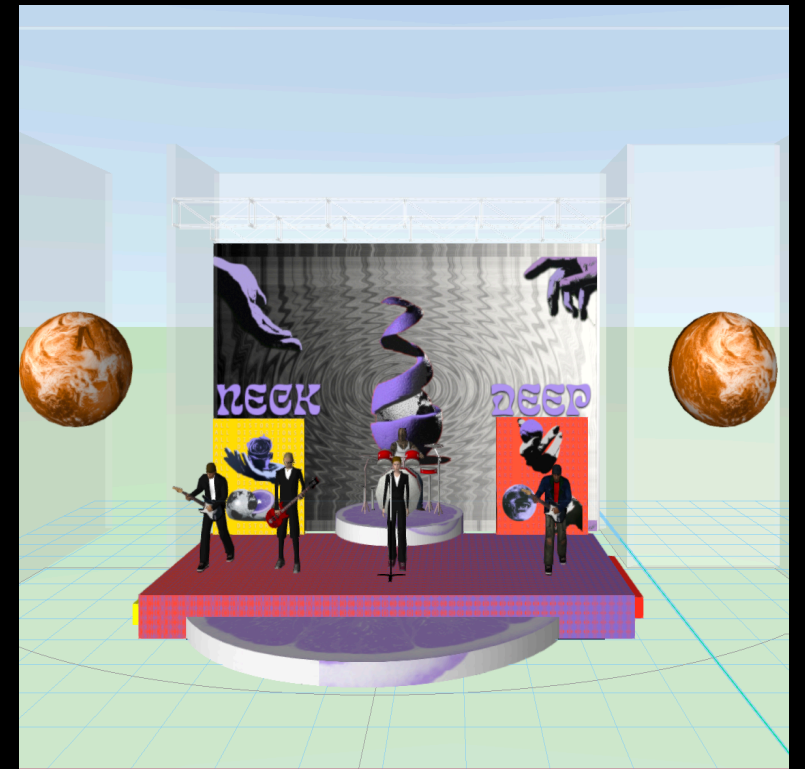
RENDERS



House right



House left

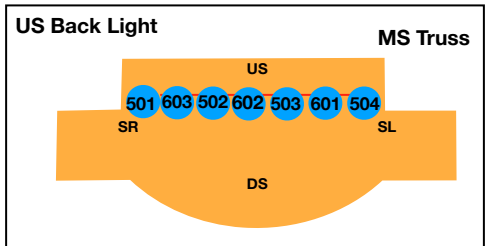
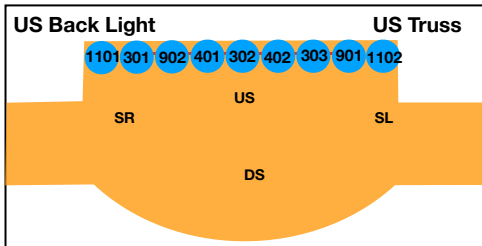


First row

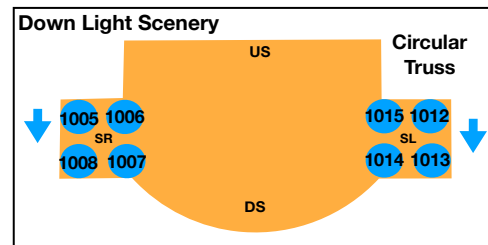
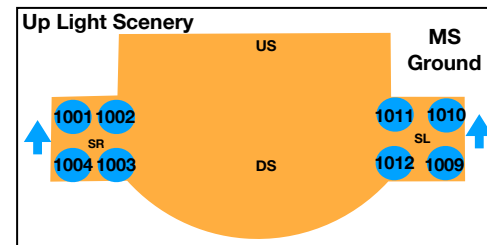
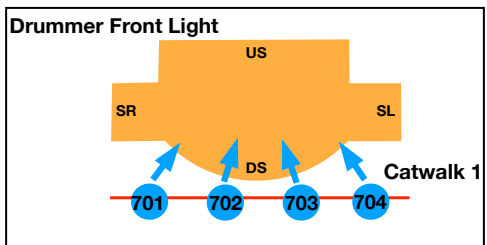
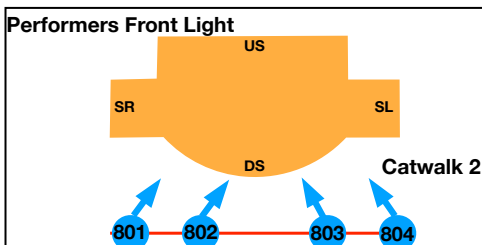
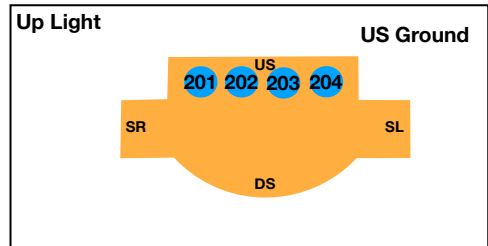
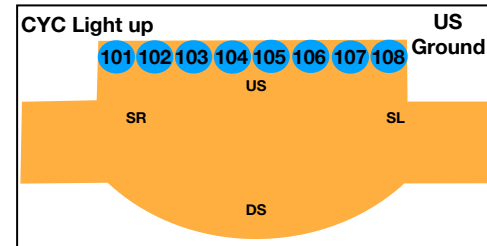
Included orange and earth elements that were so heavily referenced on their album

MAGIC SHEETS

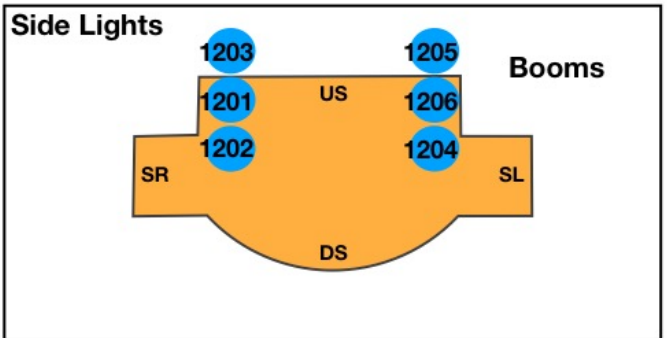
All Distortions are Intentional Tour 2021
 Neck Deep
 Venue: Voorhees Theatre CITY TECH
 LD: Ashly Montesinos



All Distortions are Intentional Tour 2021
 Neck Deep
 Venue: Voorhees Theatre CITY TECH
 LD: Ashly Montesinos



















All Distortions are Intentional Tour 2021
 Neck Deep
 Venue: Voorhees Theatre CITY TECH
 LD: Ashly Montesinos



- Most artistic piece of paperwork
- Useful for quickly bringing up channels when focusing and programming
 Greatly helped when cueing my song
- Grouped them according to their positions

CUE LIST

Neck Deep - Serpents

Cue	Time	Color Palette	Description	Music Notes
1	0:00-0:12		Fade up to blue - No movement	Guitar
2	0:12-0:34		Blue background Green, white, blue moving lights Flashes/Strobing	Bridge
3	0:34-0:35		Sudden Stop - All green	Guitar
4	0:35-0:45		Green background Yellow and green moving lights	Verse 1
5	0:45-0:46		Same as previous- but adding white flashes	Drums in bg
6	0:46-0:56		Green background Yellow and green moving lights	Verse 1 continues
7	0:56-0:57		Same as previous- but Adding white flashes	Drums
8	0:57-1:05		Green background Blue and yellow moving lights	Chorus
9	1:05-1:06		Same as previous- but adding white flashes	Drums
10	1:06-1:17		Green background Blue and yellow moving lights	Chorus continued
11	1:17-1:26		Slowing Down White background Blue moving lights	Verse 2 -music only
12	1:26-1:47		Color fade to blue/white background White and aqua moving lights	Verse 2 - Lyrics start
13	1:47-2:08		Green background Blue and yellow moving lights	Chorus
14	2:08-2:29		Green and blue background Blue, yellow, green, aqua moving lights flashing	Bridge
15	2:29-2:35		Green Background Yellow, blue and green moving lights - flashing	After bridge -When lyrics stop
16	2:35-2:45		All lights fade to 0	Final guitar

CUE VIDEO



https://www.youtube.com/watch?v=Z6w-Gr_JTwi

DIFFICULTIES

- GrandMA – Had difficulties in the very beginning when storing my cues
- Vectorworks- Starting up. I was a beginner with this software and didn't know much.

ACHIEVEMENTS

- GrandMA – Can now navigate through the software and see my lights in 3D.
- Vectorworks – Can now use it to efficiently draft
- This semester I took 7 classes and had a job, but I was able to successfully finish this project

SPECIAL THANKS

Advisor – Miguel Valderrama

John Robinson