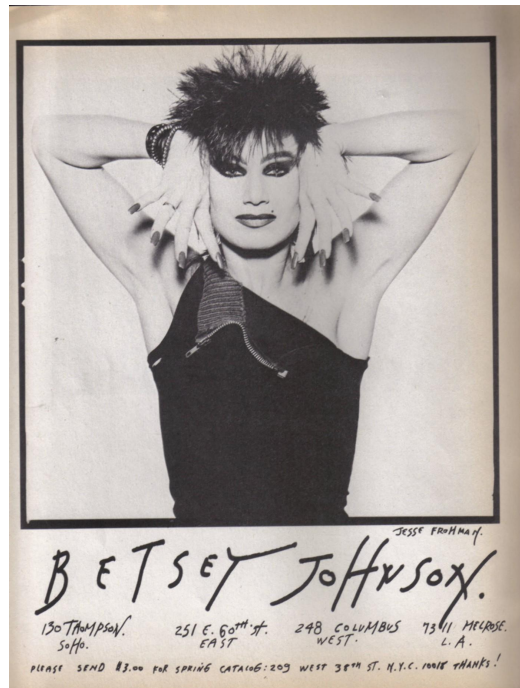




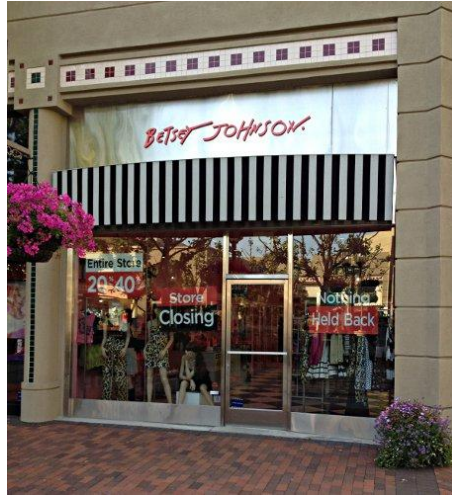
BETSEY JOHNSON

Alyssa Skerret

JOHNSON GROWING UP



BETSEY JOHNSON BOUTIQUES



BETSEY JOHNSON EXPANDING HER BRAND



Title:Pave Cat
Mask Pendant
Necklace

Designer: Betsey
Johnson

**Materials and
Techniques:**Metal,
Glass

Web ID:11302644



Title:Take Me To The Prom
Top Handle Bag

Designer: Betsey Johnson

**Materials and
Techniques:**Rhinestone
Embellishment

Web ID:10942603



Title:Bini Dress
Sandals

Designer: Betsey
Johnson

**Materials and
Techniques:**Manmade
upper; manmade lining;
manmade sole

Web ID: 8432484

BETSEY JOHNSON TODAY



BETSEY JOHNSON & ELSA SCHIAPARELLI



Designer: Elsa Schiaparelli

Date: 1937

Materials and Techniques: Silk

Accession Number: 2009.300.1347a, b

Title: Ensemble

Designer: Betsey Johnson

Date: 1972

Materials and Techniques: Synthetic

Accession Number: 1974.171.4a, b

BETSEY JOHNSON & ELSA SCHIAPARELLI



Title:Gold-Tone Pavé Floral
Ladybug Pendant Necklace
Designer: Betsey Johnson
Materials and Techniques:
Set in gold-tone mixed metal;
glass; resin; sequins
Web ID: 10580135



Title:Necklace
Designer:Elsa Schiaparelli
**Materials and
Techniques:**synthetic, metal
Accession Number: 2009.300.1234

Bibliography

Betsey Johnson, L. (2020, April 16). Iconic Fashion Designer Betsey Johnson Has Advice For Her 26-Year-Old Self. Retrieved November 29, 2020, from <https://www.refinery29.com/en-us/2020/04/9679196/betsey-johnson-advice-26-year-old-self-memoir>

Bohra, R. (2017, November 23). BETSEY JOHNSON. Retrieved November 29, 2020, from <https://medium.com/@riabohra9196/betsey-johnson-d7aebce58a62>

Lutz, A. (2012, April 27). How Iconic Designer Betsey Johnson Went From Outfitting The Stars To Bankruptcy. Retrieved November 29, 2020, from <https://www.businessinsider.com/history-of-betsey-johnson-2012-4>

Fleming, K. (2020, April 04). Betsey Johnson opens up about her disastrous love life and crazy 'abduction'. Retrieved November 29, 2020, from <https://nypost.com/2020/04/04/fashion-designer-betsey-johnson-opens-up-about-crazy-love-life/>

Ensemble [Photograph]. (1978). Met Museum, New York City.

Ensemble [Photograph]. (1972). Met Museum, New York City.

Evening dress [Photograph]. (1937). Met Museum, New York City.