

Learning Places Spring 2016

# SITE REPORT

## Brooklyn Public Library



AISEL OMERBASHI

03.02.2016

### INTRODUCTION

In this site report we are being introduced with the way of finding accurate information and doing research in a professional way. We had the opportunity to check the Brooklyn's Public Library archives. We got access to the oldest maps in the library's archives and we took pictures of them that we may need for a future research. The librarian also explained to me how to do extra research on the BPL's website. Their website is a really good source to find trusted information.

## PRE-VISIT REFLECTION

This was our first visit to a public library with the class and the first visit to a public library for me. I really didn't know what to expect in this case since I didn't have any experience in public libraries before. I was mostly with the idea that we will be looking for books that helps on our research, but I never knew that they have a large collection of archived material.

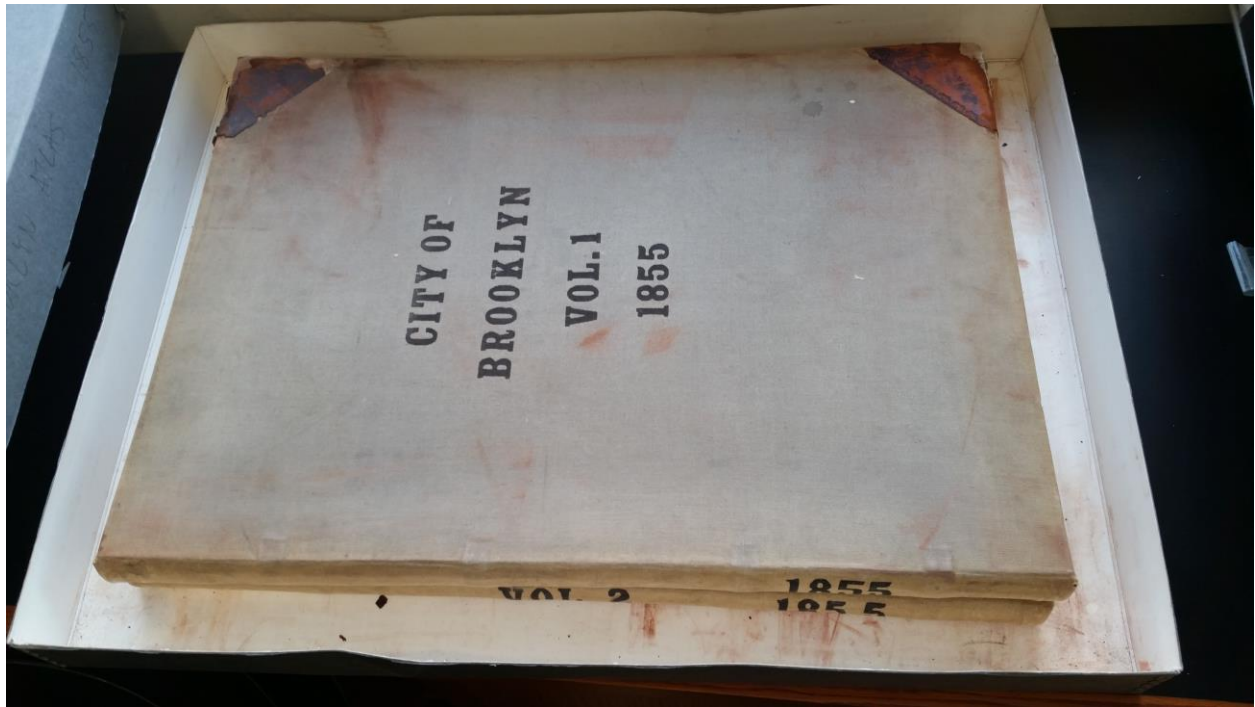
## SOURCES found

1. Kings County, N.Y, Outline & Index Map of the City of Brooklyn.
2. S. Edward Stiles, Plan of the Battle of Brooklyn, August 27<sup>th</sup> 1776

## SITE DOCUMENTATION (photos/sketches)



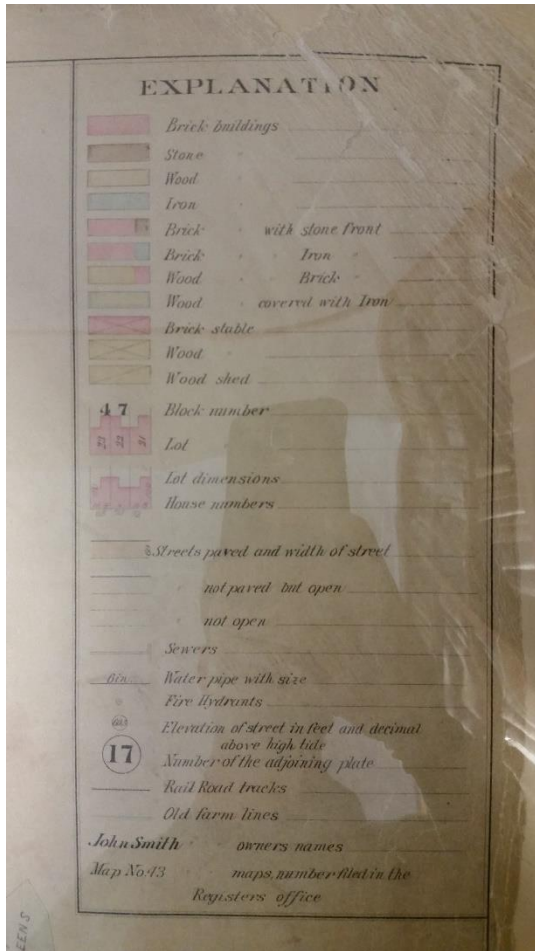
I took this picture to show the lined up map books that I could have access to and that I can study for as long as I need to. I could take pictures of them as well



This was one of the unique map books that was saved aside and being preserved. I found this one more helpful to work with since it didn't have plastic, and that won't reflect the light back so I used it for my pictures.



I thought that this map was interesting and that it can be an addition of my future project, so I took pictures of it.



I took picture of this map key so I can analyze the pictures of the maps from the Brooklyn Public Library hoping for it to help me find what I am looking for.



Taking over the whole table looking for the right information about time period I will be writing.

## DISCOVERIES

1. Neighborhood History
  - a. Commercially growing which led to the growth of population.
  - b. The second bridge (Manhattan Bridge) was added to the connection of Brooklyn with Manhattan.
2. Key Events / Historical Dates
  - a. Recording information of every house in the whole city of Brooklyn and about fire hazard safety.
  - b. Insurances trying to prevent the great fires and making people replace wood with brick.
  - c. St. Annes Church
3. Key Players
  - a. Joshua and Comfort Sands
  - b. Sam Jackson
  - c. T.H. Smith
4. Relationship Key Players
  - a. Map makers
  - b. Land owners
5. Public Perception of Key Events
  - a. Bridges that connect the City with Brooklyn
  - b. Land was available to everyone for sale so each of them could have their one private place to stay.
  - c. More businesses in the area and more work for people, and that effects in the growth of the economy.
6. Important Changes to Neighborhood
  - a. Rope Walks were removed from the center city because of their high rate of causing fire.
  - b. Wherever street that was leading you to the ferry became a main street
7. Other Observations
  - a. Many lots were bought and built with residential houses.
  - b. The growth of the population drastically.
  - c. A negative observation is the buildings wall to wall with each-other, which would cause fire hazards by passing the fire from one building to the other.

## TOPICS & KEYWORDS

Frederick Morris, P.C. Kelley, Mercantile, Commercial, Industrial, Waterfront, East River, St. Ann's

Roman Catholic Church, National White Lead.

## QUANTITATIVE DATA for Area of Study

Subject	Data
Land Ownership	
Number of Blocks	30 building lots for block
# of Buildings on a Typical Block	Fully used 30 out of 30 spaces were built
Materials	Wood, brick and combined
# of Stories of Buildings	1-4 stories
Residential Bldgs.	80% of the blocks were built by residential
Empty Lots	A few of the were empty and waiting to be build
Commercial Uses	Every corner of the block was used for commercial purpose
Industrial Uses	Industrial arrived in the city of Brooklyn basing it to the theory “more populated area, more money”
Elevated railroads	The Lexington Ave.

## QUESTIONS to Research Further

### QUESTIONS:

1. Was this growth of population planned?
2. How the area was effected from the building of the Brooklyn Bridge?
3. How possible for a regular worker to by a land and even built a house at that time?

### RESEARCH METHOD/ ADDITIONAL SOURCES NEEDED TO ANSWER EACH QUESTION ABOVE:

1. Question 1
  - a. United States Census
  - b. Wikipedia
  - c. Brooklyn Public Library website
2. Question 2
  - a. History.com
  - b. Wikipedia
  - c. eyewitnesstohistory.com
3. Question 3
  - a. Brooklyn Public Library website
  - b. Public Archives
  - c. Brooklyn Historical Society

## SUMMARY / POST VISIT REFLECTION

The Brooklyn Public Library wasn't help to me. I tried to find maps around the era that I wanted to be studying and do research on. They had a limited amount of maps that didn't go earlier the 1838. This situation got me bored and also tired of carrying all those heavy maps back and forth. I took plenty of pictures that I thought might be helpful at some point of time on my research, but that never happened, the pictures I took there were never used for my research. What I learned from that visit was only the part where the lady at the front desk taught me how to find information in the BPL's website, which I have been using since then for my researches.