

Learning Places Spring 2016

# LIBRARY / ARCHIVE REPORT

## New York Public Library



TROY SIEUSANKAR

03.09.2016

### INTRODUCTION

During the visit at this library, a large number of maps of Brooklyn was made available by the librarian. Since my focus of my research is based between the late 1800s and early 1900s, only photographs of the maps from that time frame were taken. An examination and an analysis of the changes of the

landscape(s) within these time frames will give a subject for further examination which will lead to a final report.

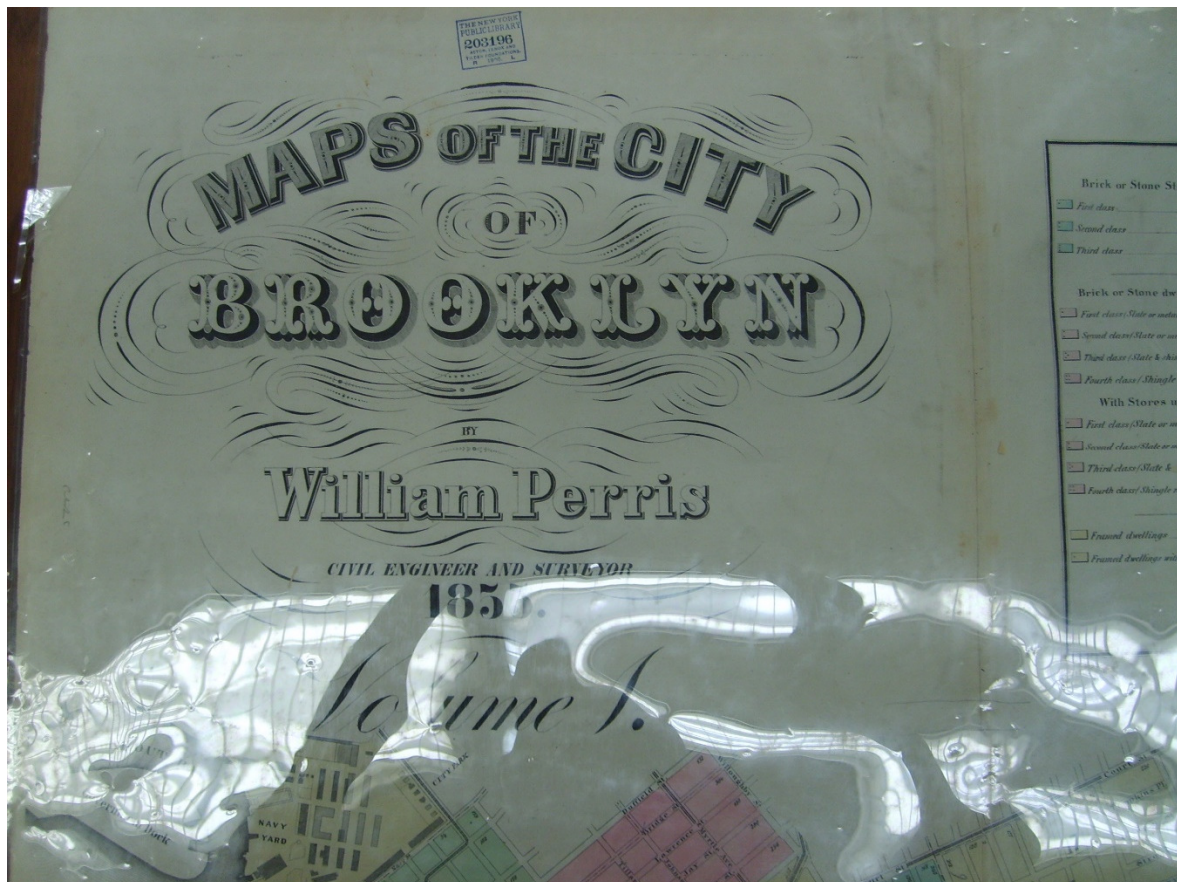
## PRE-VISIT REFLECTION

PRIOR to the site visit, I anticipated seeing during the site visit: more grandeur architecture than the average neighborhood libraries, such as paintings, murals, statues, marble surfaces and Roman or Greek style columns; huge stacks of reference books; lots of activities with people performing research, studying, and other miscellaneous personal activities; a lot of security guards; and many tourists taking photographs.

## SOURCES found

1. William Perris, Maps of the City of Brooklyn, Volume 1, 1855
2. Unknown, Part of Section 1 (Brooklyn), Plate 1, 1908
3. Unknown, Desk Atlas Borough of Brooklyn, Volume 1, 1929

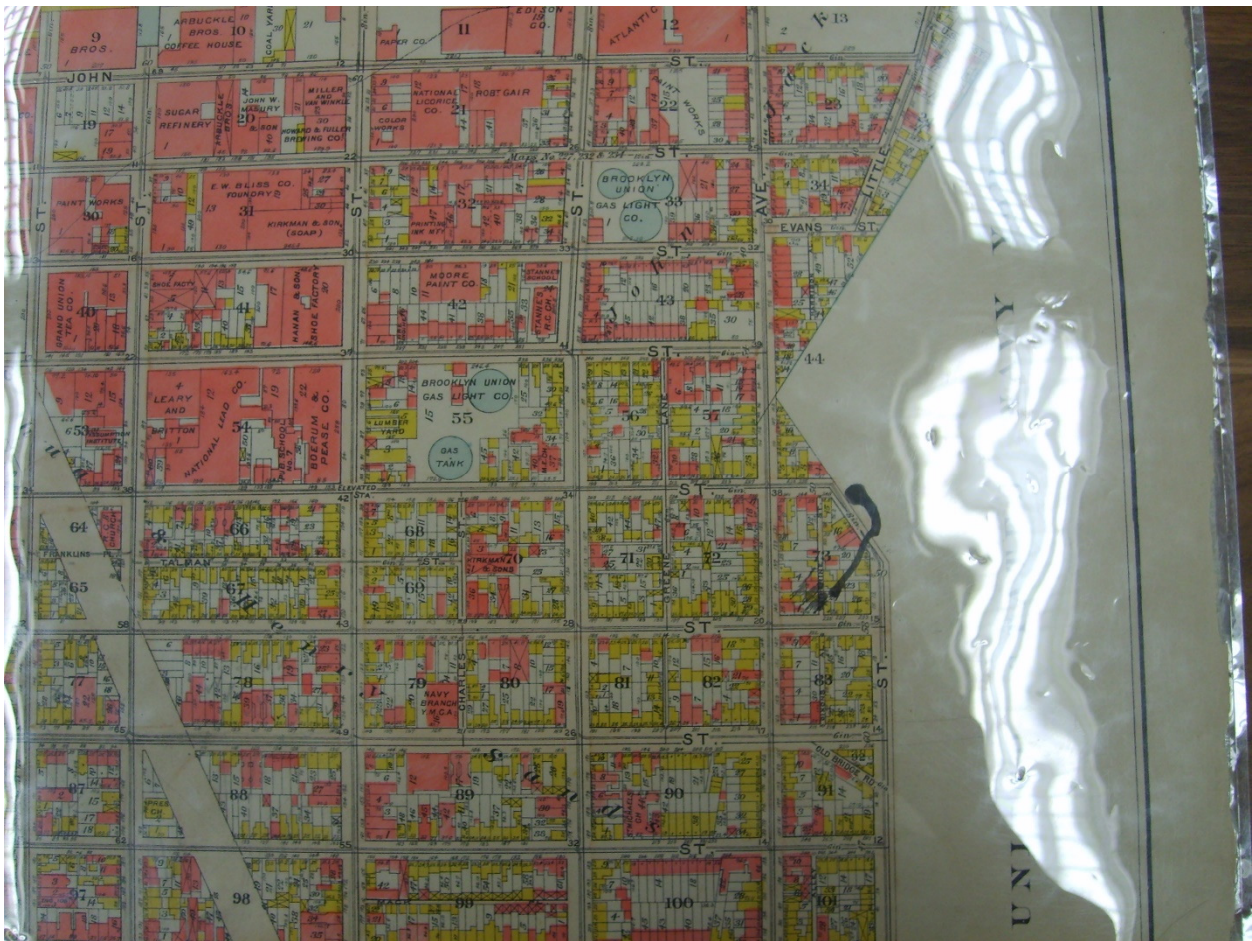
## DOCUMENTATION of site & resources (maps/archival documents/photos)



Earliest source relating to the scope of my research topic. May provide leads for further inquiry.



Segmented photographs of the map from 1908 Brooklyn

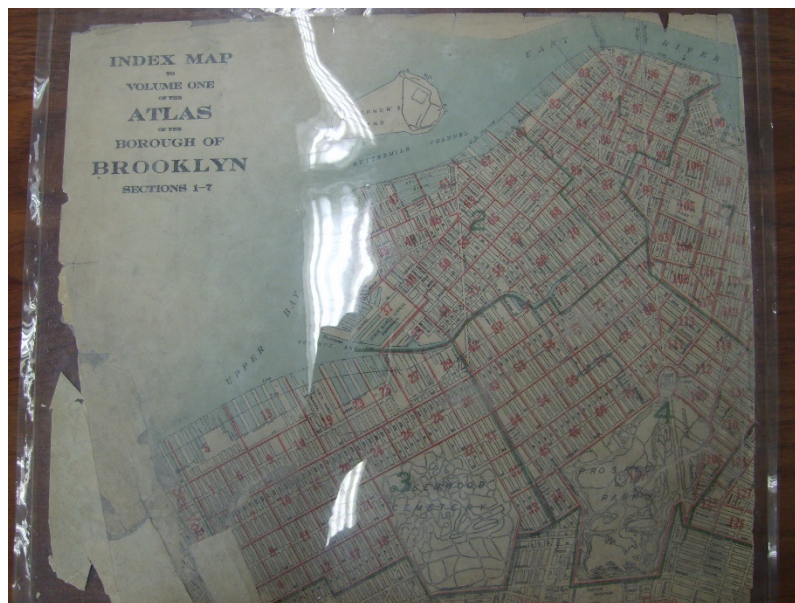


A zoomed out view of Hudson Avenue and the Navy Yard, 1908.

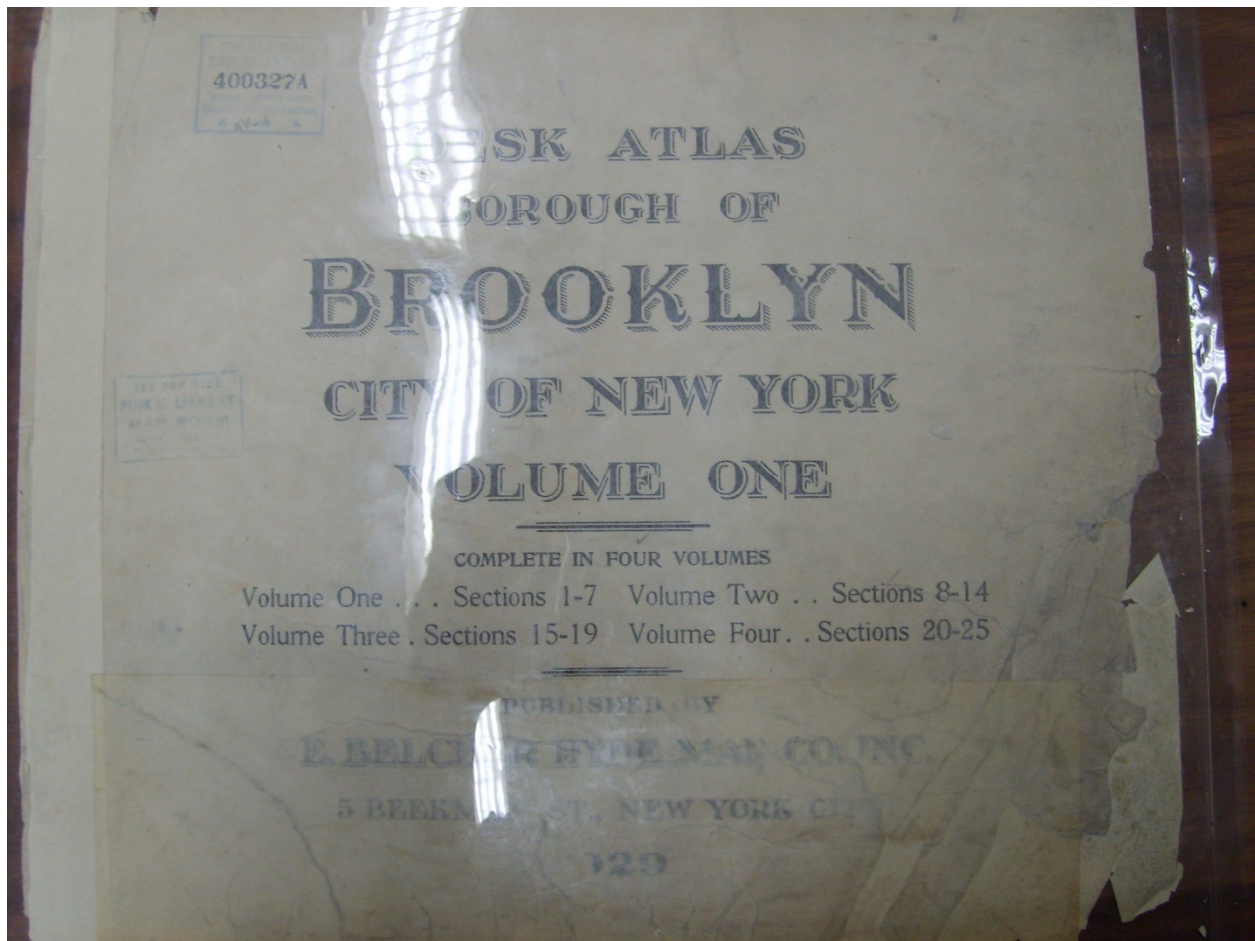


Segments of the index map of Brooklyn, 1908

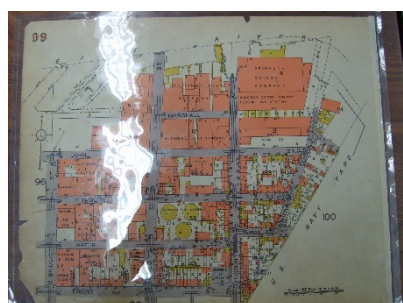
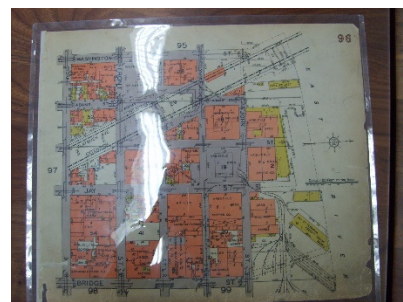
To provide more detailed information when zooming in. The segments are placed in the respective locations as a whole and is in relation to the following map below.



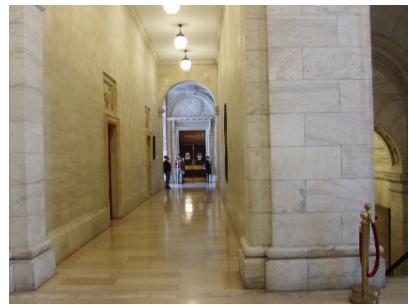
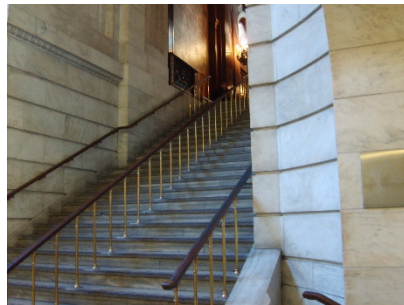
Index map of Brooklyn, 1908



Desk Atlas Borough of Brooklyn City of New York, Volume 1, 1929.



Maps 94 to 99 are the latest record taken at the New York Public Library, exact year unknown.



Above are some architectural features and designs inside the New York Public Library

## DISCOVERIES

1. Neighborhood History
  - a. Hudson Avenue was a long stretch of street
  - b. Hudson Avenue was later cut off at York Street
2. Key Events / Historical Dates
  - . Urban development had been the cause of change at Hudson Avenue and York Street

- a. A school was built on that cut off location
- 3. Key Players
  - . New York City developers
- a. Displaced homeowners
- 4. Relationship Key Players
  - . City officials
  - a. New York City residents
- 5. Public Perception of Key Events
  - . Relocation/removal of residents
- a. Street cut off at Hudson Avenue
- b. Building a school on that site
- 6. Important Changes to Neighborhood
  - . A new school established for relocated/local residents
- a. New public housing complex

## TOPICS & KEYWORDS

Brooklyn Navy Yard, Hudson Avenue AND York Street, Public School 307, Vinegar Hill, Urban Development, Manifest Destiny, etc.

## QUANTITATIVE DATA for Area of Study

Subject	Data
Land Ownership	once private but later public
Number of Blocks	one
# of Buildings on a Typical Block	approximately 30 but much fewer today
Materials	brick and wood frame
# of Stories of Buildings	unknown
Residential Bldgs	approximately 30

Empty Lots	two
Commercial Uses	none apparent from map
Industrial Uses	none apparent from map

## QUESTIONS to Research Further

### QUESTIONS:

1. Who exactly made the plans for the urban renewal development?
2. What happened to all of the people who were displaced?
3. What was the driving force behind the urban renewal project?

### RESEARCH METHOD/ ADDITIONAL SOURCES NEEDED TO ANSWER EACH QUESTION ABOVE:

1. Question 1
  - a. Wikipedia
  - b. Google
  - c. State documents
  - d. Library
2. Question 2
  - . Wikipedia
  - a. Google
  - b. State documents
  - c. Library
3. Question 3
  - . Wikipedia
  - a. Google
  - b. State documents
  - c. Library

## SUMMARY / POST VISIT REFLECTION

Many of the maps were laid out in chronological order by the librarian, but there were few maps and header documents that had explicit dates printed on them. I will have to examine the details of each map in order to find any clue for my research. These maps will provide a broader sense and context for my research by helping me to understand the political motives and industrial development throughout the late 1880s and early 1990s. This library was as grand as I had expected in my pre-site reflection. I



enjoyed the architectural designs, details, and layout. The librarian was very knowledgeable which helped me to get a good general picture of the history of Brooklyn.