

# Information Graphics

# NYC Coronavirus Process Book

---

Amberly Lima  
Communication Design II  
COMD 2400 D198

# Project Overview

---

The information graphic is an overview of the amount of fatalities of the coronavirus in NYC and the New York State overall by race and ethnicity in April 2020. The redesign of the chart should be visually clearer and more compelling through type layouts, scale and space, font size and positioning. Use graphic elements, pie charts, bar charts or ethnographic people. Use color (hue) to make distinctions for added clarity.

# Original Design

---

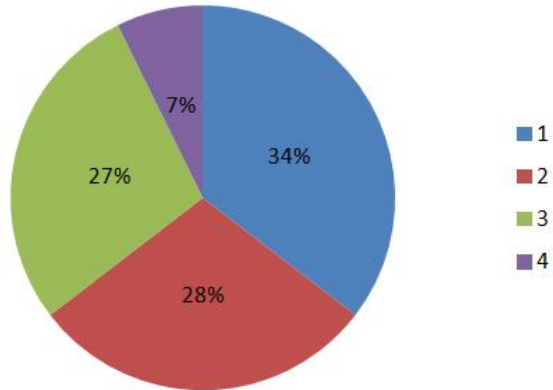
**Fatalities by Race/Ethnicity** *Data is preliminary. With 90% reporting, below is the breakdown for NYS excluding NYC. With 63% reporting, below is the breakdown for NYC as provided by NYCDOHMH.*

<b>Race/Ethnicity</b>	<b>NYC</b>	<b>NYS Excl. NYC</b>
<b>Hispanic</b>	<b>34% (29% of population)</b>	<b>14% (11% of population)</b>
<b>Black</b>	<b>28% (22% of population)</b>	<b>18% (9% of population)</b>
<b>White</b>	<b>27% (32% of population)</b>	<b>62% (75% of population)</b>
<b>Asian</b>	<b>7% (14% of population)</b>	<b>4% (4% of population)</b>

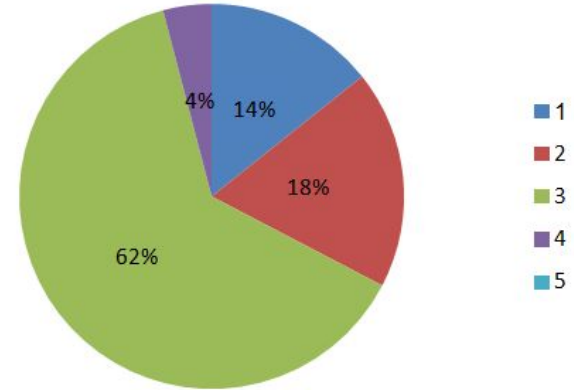
# Organization of Data

---

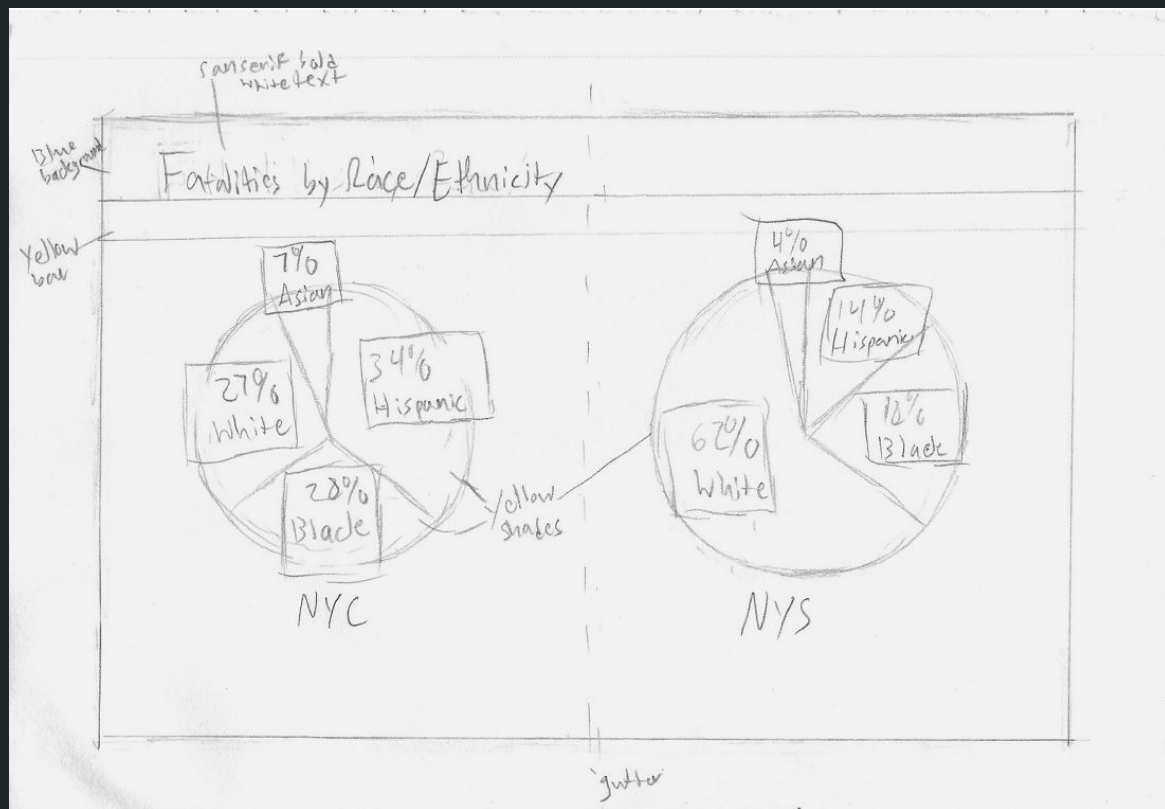
Fatalities by Race/Ethnicity (NYC)



Fatalities by Race/Ethnicity (NYS)



# Rough Sketch



# Final Design

## NYC Coronavirus

### Fatalities by Race/Ethnicity

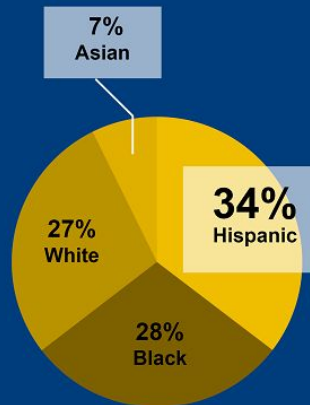
Population:

22%  
Hispanic

29%  
Black

32%  
White

14%  
Asian



NYC

\*Data based on 63% reporting

\*Data is preliminary, provided by NYCDOHMH

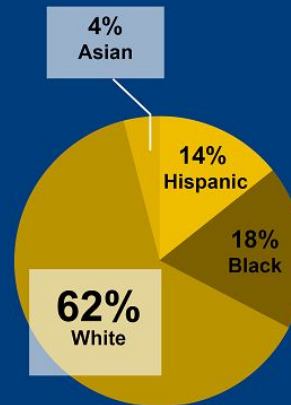
Population:

11%  
Hispanic

9%  
Black

75%  
White

4%  
Asian



NYS  
(Excl. NYC)

\*Data based on 99% reporting