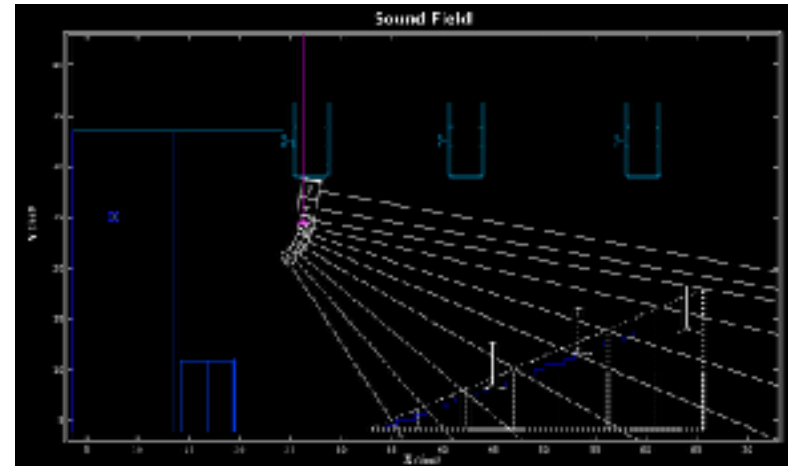


Culmination Update  
Week: 05-11.Feb.2018  
Gus Kapko

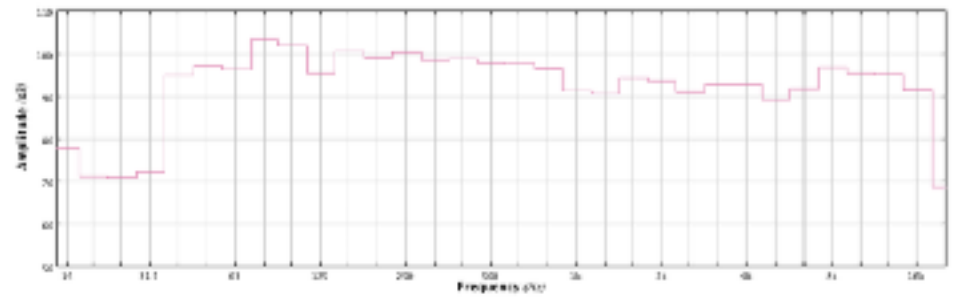
- 1.....Lina Focus
- 2.....Lina Estimate
- 3.....Lina EQ & Coverage
- 4.....Lina Info
- 5.....D&B Coverage
- 6.....D&B Part List
- 7.....D&B Array Angle
- 8.....Christie Part List
- 9.....Christie Spec
- 10.....Christie Lens Calc

Back.....Next Steps

# Lina Focus



8 x Lina & 2 x 750-LFC Flow



Headroom, 1/3 Smoothing

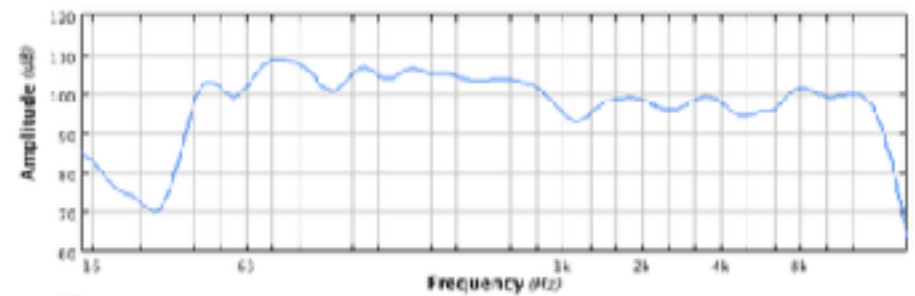
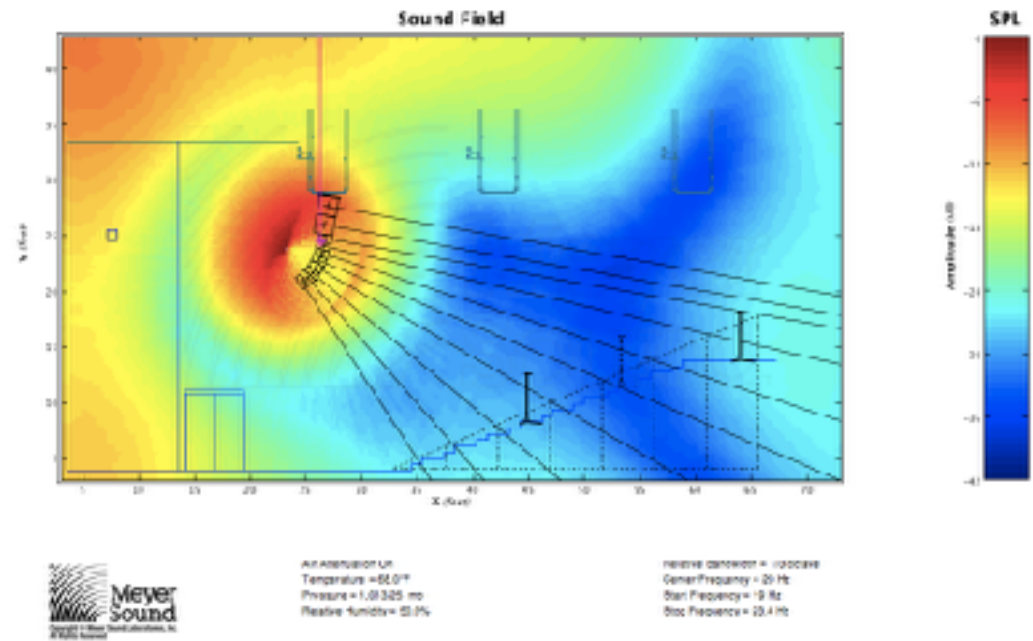
Gus Kapko +1 714 906 0266  
Augustus.kapko@mail.citytech.cuny.edu

# Lina Part List

<b>QTY</b>	<b>Item</b>	<b>Description</b>	<b>Unit Price</b>	<b>Total</b>
16	LINA	Speaker	\$4,219.15	\$67,506.40
4	750-LFC	Sub	\$4,876.60	\$19,506.40
2	MG-Mina	Rigging Frame	\$1,551.06	\$3,102.12
1	Galileo	System Processing	\$7,129.79	\$7,129.79
4	Caster LINA	Cart for 4 Lina	\$935.00	\$3,740.00
2	Caster 750	Cart for 2 750-HP	\$1,045.00	\$2,090.00
1	Cabling	TBD (EST)	\$250.00	\$250.00
1	Total			\$103,324.71

Gus Kapko +1 714 906 0266  
Augustus.kapko@mail.citytech.cuny.edu

# Lina EQ & Coverage



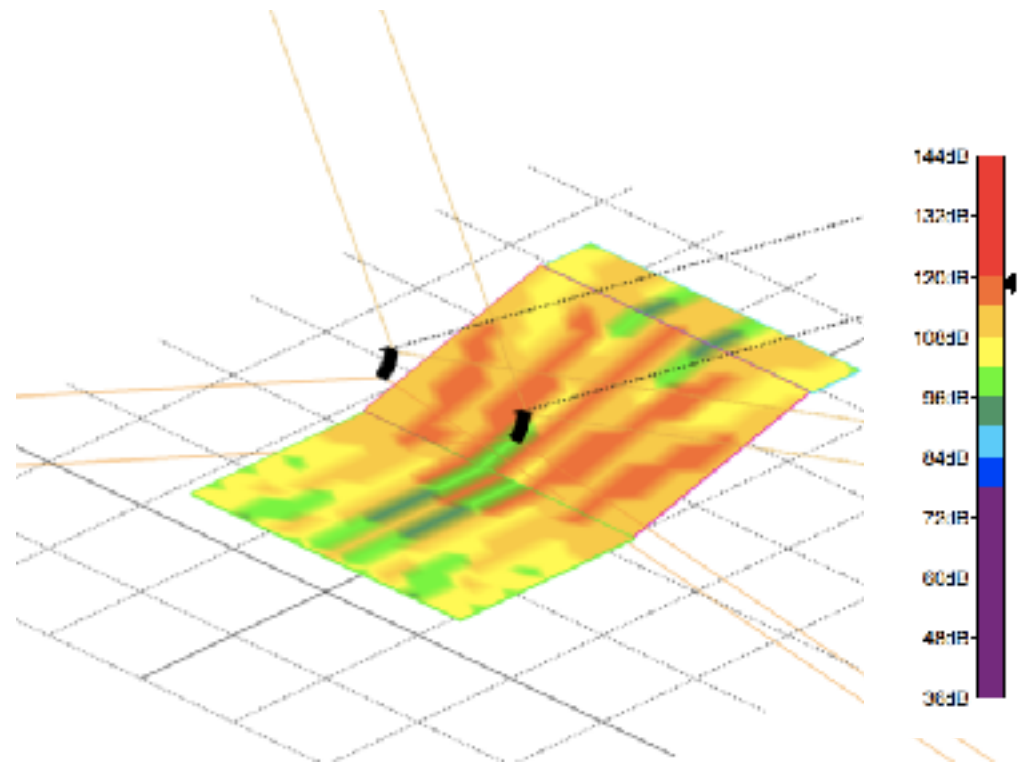
Gus Kapko +1 714 906 0266  
Augustus.kapko@mail.citytech.cuny.edu

# Lina Info

ID	ELEMENT MODEL	SPLAY	REAR ANGLE	FRONT ANGLE	TOTAL ANGLE	ADDER	CW	PROCESSOR LABEL
-	NO-MINA (750 forward)	-	-	-	-9.91°	-	-	-
1	750-LFC front facing, middle rod	0°	0°	-	-9.91°	10	1	Addr 10 Output 1
2	750-LFC front facing (LINA forward)	0°	-	0°	-9.91°	10	1	Addr 10 Output 1
1	LINA	0°	0°	-	-9.91°	10	1	Addr 10 Output 1
2	LINA	-3°	-3°	-	-12.91°	10	1	Addr 10 Output 1
3	LINA	-5°	-5°	-	-17.91°	10	1	Addr 10 Output 1
4	LINA	-5°	-5°	-	-22.91°	10	1	Addr 10 Output 1
5	LINA	-7°	-7°	-	-29.91°	10	1	Addr 10 Output 1
6	LINA	-10°	-10°	-	-39.91°	10	1	Addr 10 Output 1
7	LINA	-9°	-9°	-	-48.91°	10	1	Addr 10 Output 1
8	LINA	-8°	-8°	-	-58.91°	10	1	Addr 10 Output 1

ARRAY SPAN	ARRAY DEPTH	ABSOLUTE COG POSITION	RELATIVE COG POSITION	CENTER OF GRAVITY	REAR RIGGING LOAD	FRONT RIGGING LOAD	TOTAL WEIGHT
8.78 f	4.06 ft	( 26.29, 24.49) ft	( -1.75, -3.96) ft	Under Rigging	549.84 lbs	43.86 lbs	593.5 lbs

# D&B Coverage



## D&B Part List

<b>QTY</b>	<b>Item</b>	<b>Description</b>
16	T10	Speaker
4	T-SUB	Sub
2	T FRAME	Rigging Frame
5	D80	Amp
2	Caster Top	Cart for 8 T-10
2	Caster Sub	Cart for 4 T-sub
1	Cabling	TBD (EST)

## D&B Array Angle



TOPs

CUT: Off CPL: 0

Cab.	Type	Setup	Level/dB	HFC	Abs.:	Splay:	Link
1	T10	Line	0.0	--	-9.8 °	0.0 °	--
2	T10	Line	0.0	--	-12.8 °	3.0 °	--
3	T10	Arc	0.0	2	-16.8 °	4.0 °	--
4	T10	Arc	0.0	--	-22.8 °	6.0 °	--
5	T10	Arc	0.0	--	-30.0 °	8.0 °	--
6	T10	Arc	0.0	--	-42.8 °	12.0 °	--
7	T10	Arc	0.0	--	-55.8 °	13.0 °	--

Gus Kapko +1 714 906 0266  
 Augustus.kapko@mail.citytech.cuny.edu



# Christie Part List

<b>QTY</b>	<b>Item</b>	<b>Description</b>	<b>Unit Price</b>	<b>Total</b>
2	D13WU-HS	12.5K Lumen Projector	\$15,045.00	\$30,090.00
2	Christie One	Rigging Frame	\$1,201.07	\$2,402.14
2	TBD	Short Throw	\$2,500.00	\$5,000.00
2	TBD	Medium Throw	\$2,500.00	\$5,000.00
2	TBD	Long Throw	\$2,500.00	\$5,000.00
2	TBD	Case	\$1,000.00	\$2,000.00
1	Total			\$49,492.14

Gus Kapko +1 714 906 0266  
 Augustus.kapko@mail.citytech.cuny.edu

# Christie Spec



<p><b>Native resolution</b></p> <ul style="list-style-type: none"> <li>• 1920 x 1200 (2,304,000 pixels) 16:10</li> </ul>	<p><b>Brightness</b></p> <ul style="list-style-type: none"> <li>• 12,500 center lumens</li> </ul>
<p><b>Type</b></p> <ul style="list-style-type: none"> <li>• Laser phosphor with Christie BoldColor Technology</li> </ul> <p><b>Typical lifetime</b></p> <ul style="list-style-type: none"> <li>• 20,000 hours</li> </ul>	<p><b>Standard</b></p> <ul style="list-style-type: none"> <li>• HDMI x 2 (one on rear panel, one on bottom of projector, independently selectable)</li> <li>• 3GSDI x 1 (BNC) • DVI-D x 1 (digital only)</li> <li>• HD15 x 1 • USB x 1 (type B mini) • USB x 1 (type A)</li> <li>• HDBaseT (RJ45 x 1)</li> </ul>
<p><b>Dimensions</b></p> <ul style="list-style-type: none"> <li>• (L x W x H) 26.65 x 23.46 x 7.99" (677 x 596 x 203mm) without feet</li> </ul> <p><b>Weight (without lens)</b></p> <ul style="list-style-type: none"> <li>• 93.7 lb (42.5 kg)</li> </ul> <p><b>Noise</b></p> <ul style="list-style-type: none"> <li>• Typical: 39dB(A)</li> </ul>	<p><b>Lenses</b></p> <ul style="list-style-type: none"> <li>• 0.84-1.02:1 zoom lens (no zoom/focus memory) - adapted 1.2-1.5:1 E Series lens</li> <li>• 1.02-1.36:1 zoom lens (no zoom/focus memory) - adapted 1.5-2.0:1 E Series lens</li> <li>• 1.2-1.5:1 zoom lens (full ILS)</li> <li>• 1.5-2.0:1 zoom lens (full ILS)</li> <li>• 2.0-4.0:1 zoom lens (full ILS)</li> <li>• 4.0-7.0:1 zoom lens (full ILS)</li> </ul>

Gus Kapko +1 714 906 0266  
 Augustus.kapko@mail.citytech.cuny.edu

## Christie Lens Calc

Back to front screen 2.0-4.0

Booth to HH Screen 2.0-4.0

Booth to Stage wash 1.5-2.0

Truss to floor 0.84-1.02

SMAART Set 0.84-1.02

To Do

Gus Kapko +1 714 906 0266  
Augustus.kapko@mail.citytech.cuny.edu