

The Textile Kit™

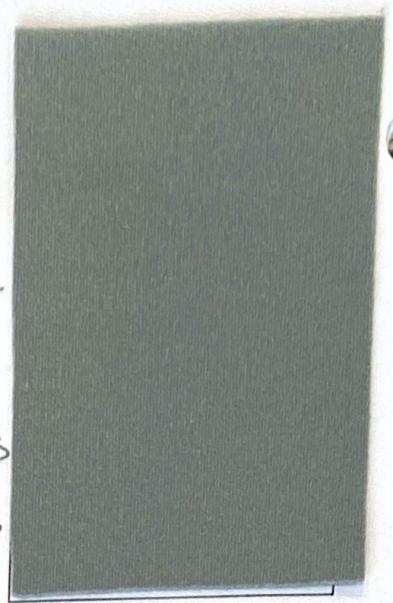
Sample # 34

Sample Name DuPont™ Sorona®

Fiber Content 100% triexta (PTT = polytrimethyleneterphthalate)

Main Features polyester variant produced partially from petrochemicals & partially from fermented feed corn sugars

Other Notes contains 37% renewably sourced ingredients by weight / Sorona® is a registered trademark of DuPont / courtesy of Hornwood, Inc. (.com)



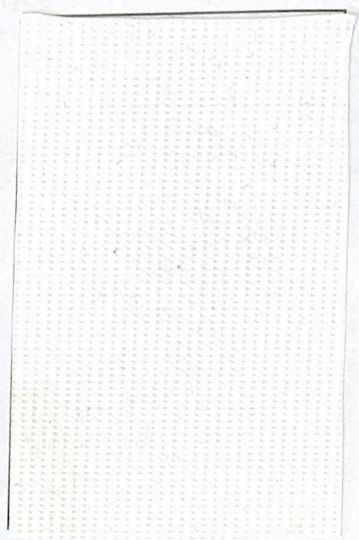
Sample # 35

Sample Name DuPont™ Tyvek®

Fiber Content 100% olefin (polyethylene)

Main Features synthetic fibers / fiberweb

Other Notes olefin is strong & lightweight / Tyvek® is a registered trademark of DuPont / courtesy of DuPont Tyvek (tyvek.com) / spunbonded



Sample # 36

Sample Name weed control fabric

Fiber Content 100% olefin (polyethylene)

Main Features synthetic fibers / film / UV treated

Other Notes genene olefin / olefin is a low cost fiber / made from solution / ultraviolet resistant



The Textile Kit™

Sample # 43

Sample Name tweed suiting

Fiber Content wool blend

Main Features fancy single yarns w/ flecks of diff. color/
balanced heavyweight plain weave / fiber dyed

Other Notes tweed effect can be subtle / made of
tweed yarns / fiber dyeing allows for tweed
effect



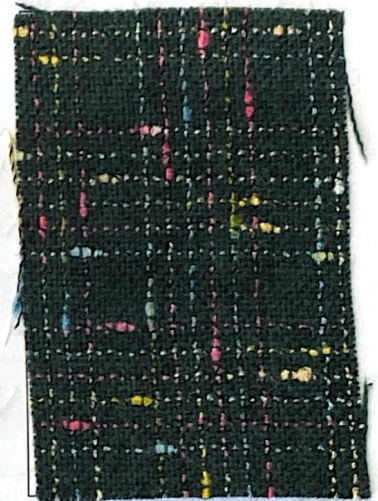
Sample # 44

Sample Name ratiné suiting

Fiber Content varies with sample

Main Features ratiné (loop) yarns

Other Notes irregular loops along length of
yarn



Sample # 45

Sample Name bouclé suiting

Fiber Content mohair / wool / other fiber

Main Features natural protein fiber / synthetic fiber
blend / bouclé (loop) yarns

Other Notes mohair from Angora goats, wool from
sheep / regular loops along length of yarn



The Textile Kit™

Sample # 55

Sample Name crinkled gauze

Fiber Content 100% cotton

Main Features balanced low-count sheer plain weave

Other Notes spun yarns with low thread count, example of "suspect fabric" regarding flammability



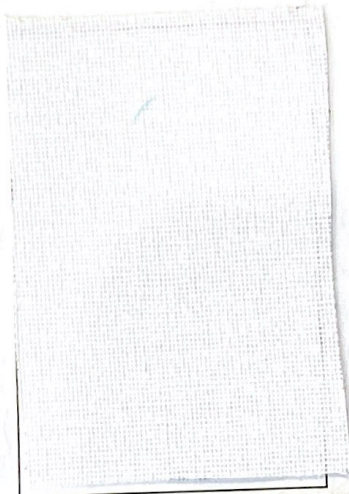
Sample # 56

Sample Name crinoline

Fiber Content 100% cotton

Main Features balanced sheer plain weave / heavy starched

Other Notes spun yarns with low thread count and stiff hand / stiff from starch



Sample # 57

Sample Name percale

Fiber Content 60% combed cotton / 40% polyester

Main Features combed yarns / balanced midweight plain weave / union dyed

Other Notes very smooth / percale has 180 or higher thread count (usually 200 or higher) / union dyeing achieves one color when dyeing a fiber blend



The Textile Kit™

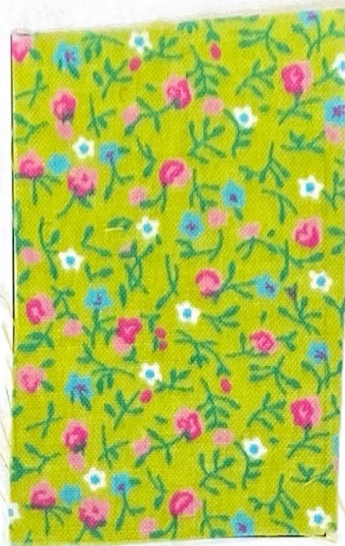
Sample # 58

Sample Name calico

Fiber Content 100% cotton

Main Features balanced midweight plain weave/
screen print/singed & starched

Other Notes calico is always printed/blotch
print/smooth/starch aka sizing adds
body



Sample # 59

Sample Name flannel

Fiber Content 100% cotton

Main Features napping twist yarns/balanced mid-
weight plain weave/napped

Other Notes napping twist in filling only/flannel
has soft, napped surface/warm and soft
from napping



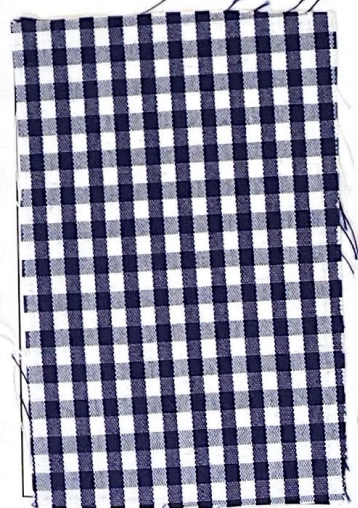
Sample # 60

Sample Name gingham

Fiber Content 100% cotton

Main Features balanced midweight plain weave/
yarn dyed

Other Notes alternating white and colored yarns
create woven check pattern/gingham is yarn
dyed by definition



The Textile KitTM

Sample # 109

Sample Name georgette

Fiber Content 100% polyester

Main Features momie weave

Other Notes with high twist yarns



Sample # 110

Sample Name 'true' double cloth

Fiber Content 100% wool

Main Features true double cloth

Other Notes five sets of yarns



Sample # 111

Sample Name matelassé

Fiber Content 100% polyester

Main Features double weave

Other Notes four sets of yarns



The Textile Kit™

Sample # 178

Sample Name tie dyed

Fiber Content 100% cotton

Main Features reactive dyed / resist dyed

Other Notes reactive dye a major dye class for cellulosic fibers / fabric resists dye where tied



Sample # 179

Sample Name ikat

Fiber Content 100% cotton

Main Features resist dyed

Other Notes yarns are resist dyed before weaving



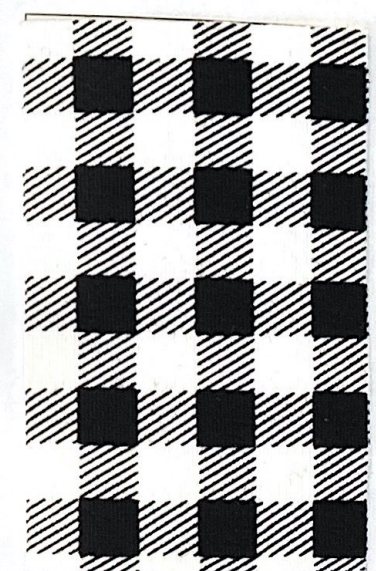
Sample # 180

Sample Name gingham print

Fiber Content varies with sample

Main Features print imitates yarn-dyed, woven gingham / direct roller print

Other Notes applied design vs. structural design / printed on undyed background



The Textile Kit™

Sample # 196
Sample Name sold as plissé (aka imitation plissé)
Fiber Content 50% polyester / 50% cotton
Main Features embossed with heat
Other Notes surface design added



Sample # 197
Sample Name vintage plissé (aka 'true' plissé)
Fiber Content 100% cotton
Main Features embossed with chemicals
Other Notes surface design added



Sample # 198
Sample Name burnout
Fiber Content varies with sample, but always at least two DIFFERENT fibers
Main Features burned out

Other Notes sheer and opaque surface design

